



Public Participation Plan: Clean Earth, LLC

**20245 77th Ave. S.
Kent, Washington 98032**

Hazardous Waste and Toxics Reduction Program

Washington State Department of Ecology
Northwest Region Office
Shoreline, Washington

July 2025 | Publication 25-04-036

Publication Information

This document is available on [Ecology's Clean Earth, LLC webpage](https://apps.ecology.wa.gov/publications/SummaryPages/2504036.html)¹ and at the following link: <https://apps.ecology.wa.gov/publications/SummaryPages/2504036.html>.

Cover photo: Washington State Department of Ecology

Related Information

- Cleanup site ID: 12484
- Facility site ID: 70726415

Contact Information

Washington State Department of Ecology

Hazardous Waste and Toxics Reduction Program
Northwest Regional Office
P.O. Box 330316
Shoreline, WA 98133

Janelle Anderson, Community Outreach Specialist

Pronouns: she/her
Telephone: 425-301-6454
Email: janelle.anderson@ecy.wa.gov

Erin Hobbs, Site Manager

Pronouns: she/her
Telephone: 425-515-5996
Email: erin.hobbs@ecy.wa.gov

Website: [Washington State Department of Ecology](https://www.ecology.wa.gov)²

ADA Accessibility

The Department of Ecology is committed to providing people with disabilities access to our information and services by meeting or exceeding the requirements of state and federal laws.

To ask for an ADA accommodation, email hwtrpubs@ecy.wa.gov or call 360-407-6700. Or call Ecology through the Washington Telecommunication Relay for services, including text telephone (TTY), at 711 or through your preferred relay service provider. Visit ecology.wa.gov/ADA for more information.

¹ ecology.wa.gov/CleanEarth

² www.ecology.wa.gov/contact

Language Services

The Department of Ecology offers translation and interpretation services at no cost. For information in your preferred language, email janelle.anderson@ecy.wa.gov or call 425-301-6454. If you call, please ask for an interpreter and wait to be connected with one.

Public Participation Plan

**Clean Earth, LLC
20245 77th Ave. S.
Kent, WA 98032**

Hazardous Waste & Toxics Reduction Program
Washington State Department of Ecology
Northwest Region Office
Shoreline, Washington

July 2025 | Publication 25-04-036



DEPARTMENT OF
ECOLOGY
State of Washington

Table of Contents

List of Figures	ii
Figures.....	ii
Public Involvement in Contamination Cleanup.....	1
Site contacts.....	1
Public Participation Activities	2
How we share information with the community	2
How you can share information with us.....	4
Public Participation Grants	5
Site Information	5
Historical use.....	5
How the site became contaminated.....	8
Contamination	Error! Bookmark not defined.
Cleanup plans.....	Error! Bookmark not defined.
Area community.....	9
Tribal engagement	12
Washington’s Cleanup Laws	Error! Bookmark not defined.
Model Toxics Control Act.....	12
State Environmental Policy Act.....	13
Plan Amendments	16
Appendix A. Steps in the MTCA cleanup process	17

List of Figures

Figures

Figure 1. Site map **Error! Bookmark not defined.**

Public Involvement in Contamination Cleanup

The Washington State Department of Ecology (Ecology, we) developed this Public Participation Plan in collaboration with Clean Earth, LLC, the party responsible for cleanup costs. The goal of this plan is to ensure meaningful community involvement throughout the cleanup of Clean Earth, LLC in Kent (site).

This plan outlines how we will keep the public informed about contamination investigations and cleanup options at each stage of the process. Please review Appendix A for more information about the cleanup process. The plan also details when and how the community can participate in the cleanup process. We encourage the public to engage with the decision-making opportunities and provide input.

Site contacts

Questions and informal comments or information about the site's history are welcome anytime. To be included in the site record, comments about the cleanup process must be submitted during comment periods.

Ecology

Washington State Department of Ecology
Northwest Region Office
P.O. Box 330316
Shoreline, WA 98133

Erin Hobbs, Site Manager
Telephone: 425-515-5996
Email: erin.hobbs@ecy.wa.gov

Janelle Anderson
Community Outreach Specialist
Telephone: 425-301-6454
Email: janelle.anderson@ecy.wa.gov

Clean Earth, LLC

Laura Dell'Olio, Senior Project Manager
Environmental Risk Management
20245 77th Ave S.
Kent, WA 98032
Telephone: 856-283-9089
Email: ladellolio@cleaneearthinc.com

If you are unable to reach these contacts, please visit the [cleanup site page](#)³ for up-to-date contact information.

³ [https:// ecology.wa.gov/CleanEarth](https://ecology.wa.gov/CleanEarth)

Public Participation Activities

Members of the public may ask questions, submit informal comments, or share site information at any time. Interested parties do not need to wait for a formal public comment period to contact Ecology.

However, to be included in the formal site record, comments about the site investigation, cleanup alternatives, or cleanups must be submitted during formal comment periods. In addition, the public is invited to review site documents before they become final. This is the most direct and influential way to learn more about the site and be involved in the cleanup's decision-making.

How we share information with the community

During specific stages of the cleanup, Ecology will mail notices about public comment periods to addresses surrounding the site. The mailing list area will vary depending on the type of contamination and where it's located. However, the list will at least include addresses within a 1/4-mile radius of the site and other interested organizations and individuals. These notices will provide:

- General information about the site.
- Contact information for submitting comments.
- Times and locations of public meetings or hearings.
- How to request a public meeting if one is not yet scheduled.

Comment period notices will be available online and at document repositories (for example, at the public library closest to the site). Notices may also be posted in various locations throughout the community (for example, local businesses, schools, or post offices).

Ecology may also develop documents outside of comment periods to keep the community updated on the site's status. These informational documents will be available online. Print copies may be mailed to the nearby community if we feel the message warrants the associated cost.

Postal mailing list

Ecology maintains a mailing list that includes addresses near the site and relevant local, state, Tribal, and federal government contacts.

People on the mailing list receive public comment notices when draft documents are available.

We will add additional individuals, organizations, and other interested parties to the mailing list as requested. If you would like to be added to the mailing list for this site, please contact Janelle Anderson at 425-301-6454 or email janelle.anderson@ecy.wa.gov.

Contaminated Site Register

Public comment periods, events, and other cleanup notices are published in Ecology's [Contaminated Site Register](#).⁴ To receive the *Contaminated Site Register* by email, please [subscribe online](#),⁵ or contact Sarah Kellington at sarah.kellington@ecy.wa.gov or 360-280-3167.

Newspaper display ads or legal notices

We announce public comment periods and events for this site in ads or notices published in [The Kent Reporter](#).⁶ We will also publish notice on our [Public Input & Events Listing](#) webpage.⁷

Ecology's website and social media platforms

We maintain a website for the [Clean Earth](#), LLC⁸ site. The website provides site information, and you may download cleanup documents.

We may also share information about cleanup sites through [news releases, our blog, and social media](#).⁹

Email lists

Ecology has an email list to update interested people about TSD facilities in the state, including this site. If you would like to be added to that email list, please contact:

Janelle Anderson, Community Outreach & Environmental Education Specialist
425-301-6454
janelle.anderson@ecy.wa.gov

Automatic site updates

You can subscribe to this site from our [generated site pages webpage](#).¹⁰ You'll receive a weekly email if we change the site's status, add documents to the site's webpage, or open a comment period.

Places to see print documents

During public comment periods, you can find print documents at the following locations:

King County Library - Kent Library	Kent, 98032
212 2nd AVE N	253-859-3330

⁴ <https://ecology.wa.gov/contamination-cleanup/Site-Register>

⁵ <https://ecology.wa.gov/site-register>

⁶ <https://www.kentreporter.com/>

⁷ <https://ecology.wa.gov/Events/Search/Listing>

⁸ <https://apps.ecology.wa.gov/cleanupsearch/site/12484>

⁹ <https://ecology.wa.gov/About-us/Get-to-know-us/News>

¹⁰ [Stericycle Kent - \(12484\)](#)

Washington State Department of Ecology
Northwest Region Office
15700 Dayton Ave N.

To schedule an appointment, please
contact:

Michael Hart
michael.hart@ecy.wa.gov
Public Disclosure Coordinator

Signs around the cleanup site

We may also install signs displaying information about project status, traffic impacts, and health risks around the cleanup site.

How you can share information with us

We hold public comment periods and sometimes public events to learn your thoughts, opinions, and concerns about cleanup at a site. We may also identify public concerns and cleanup goals by meeting with and soliciting information from interested community members and organizations. To collaborate with us about this site, please contact Janelle Anderson, Community Outreach & Environmental Education Specialist at 425-301-6454 or janelle.anderson@ecy.wa.gov

Public comment periods

At a minimum, the Model Toxics Control Act (MTCA, see page X for more information) requires 30-day comment periods to allow interested members of the public to comment on draft documents, legal agreements, and proposed cleanup actions. If there is significant interest, Ecology may extend the public comment period. We hold 45-day comment periods when we are issuing or renewing corrective action permits.

When Ecology oversees State Environmental Policy Act (SEPA) determinations (see page X for more information), we hold comment periods for at least two weeks and may extend to 30 days or more when other cleanup documents are concurrently available for review.

Following a comment period, we publish all the input we received and respond to significant comments and questions, as appropriate. If the comments result in significant changes to the cleanup documents, then the documents will be revised and re-issued for public review. If the comments do not result in significant changes, the documents will become final.

Public events

We hold public meetings, workshops, open houses, and hearings based on community interest. At meetings, workshops, and open houses, attendees can ask questions, learn more about the site, and submit written comments when a comment period is open. At a public hearing, verbal

comments are transcribed for the record, and Ecology responds to them after the comment period in our response to comments.

If we have not scheduled an event, we will hold one if 10 people request it. This may cause us to extend a public comment period, so the event occurs during it.

Events are held at locations close to the site that meet Americans with Disabilities Act standards. Public events are always announced in advance using a variety of methods.

Public Participation Grants

Grants may be available to neighborhood committees, non-profits, and other groups interested in the site. For contaminated sites, these funds can be used to:

- Hire an expert to help interpret technical information
- Conduct activities that enhance the public's understanding of, and participation in, the cleanup process

For more information about public participation grants, please contact Laura Busby at 360-280-5088 or laura.busby@ecy.wa.gov and Jill Krumlauf at 360-790-5771 or jill.krumlauf@ecy.wa.gov. You may also visit the [Public Participation Grant webpage](#).¹¹

Site Information

Historical use

This site has mainly treated and stored oily wastewater since 1980. Hazardous waste management activities also began in the 1980s and Chemical Processors, Inc. (a predecessor of Burlington Environmental) bought the site in 1989. This facility has operated under four owners:

- Burlington Environmental
- PSC Environmental Services
- Stericycle
- Clean Earth, LLC (present)

Since the late 1980s, the Site has stored commercial goods and transferred hazardous waste. Most facility operations regulated under Washington Dangerous Waste Code stopped in 2017. Remaining business is mostly regulated under the Washington Solid Waste Code, which includes non-Federal Hazardous or State Dangerous wastes and Household Hazardous waste.

¹¹ <https://ecology.wa.gov/PPG>

Hazardous waste management activities at the facility included the processing and treatment of:

- Acids (low pH)
- Caustics (high pH)
- Oily wastes and oily wastewater
- Phenols
- Cyanide wastes
- Sludges
- Wastewaters containing metals

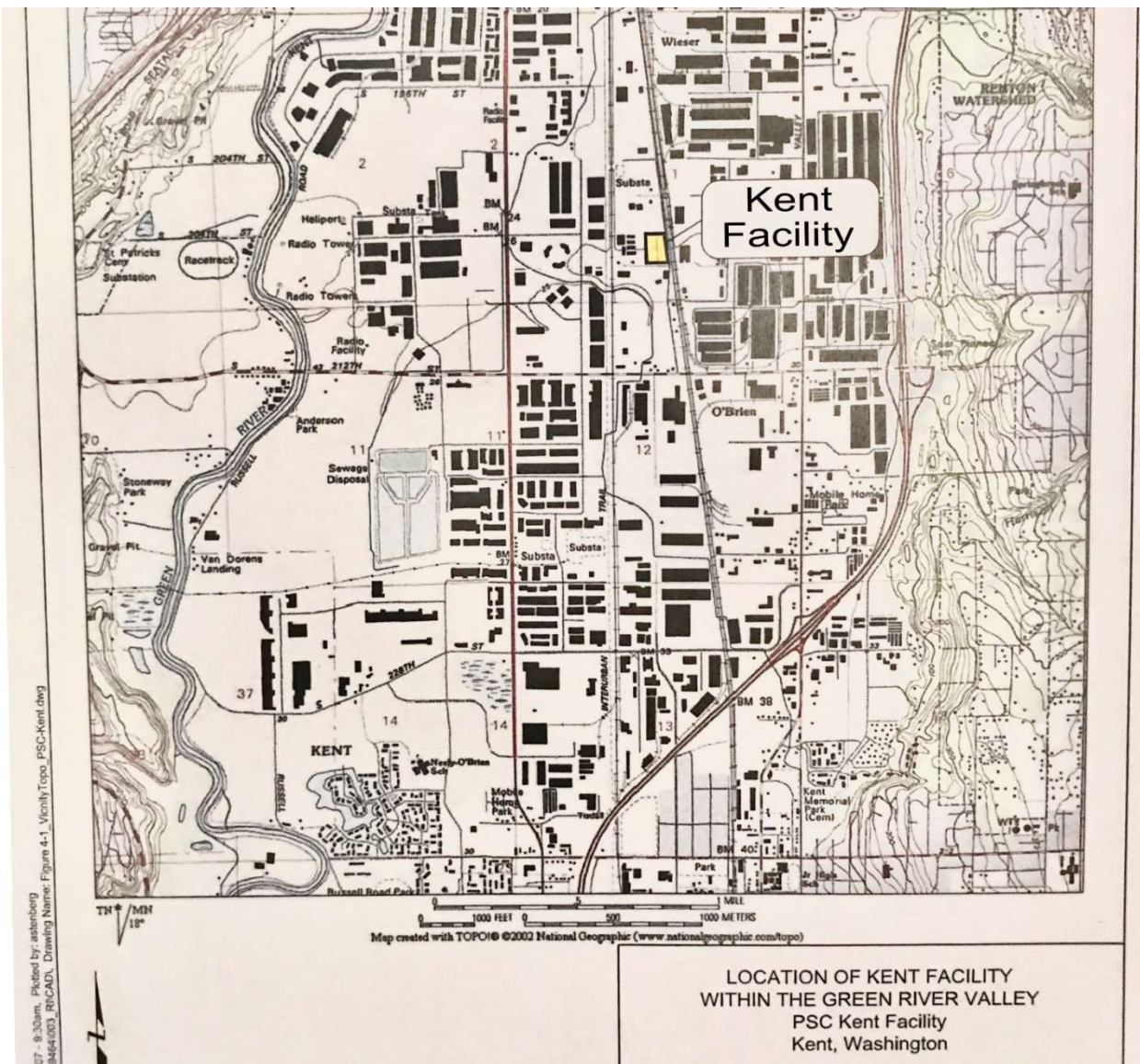


Figure 3: Map of Facility

In 2017, RCRA hazardous waste activities were moved from the Kent Site to another Clean Earth facility in Tacoma. Many changes to the Kent location have occurred since 2017 including:

- Construction upgrades
- Relocation of some operations to the Tacoma facility
- Removing several dangerous waste units
- Closure of several holding tanks that held non-regulated oily wastewater

How the site became contaminated

A number of spills and leaks of hazardous wastes occurred at the site since they began operations. Most of the spills and leaks happened in the tank farm area. While most of these releases stayed within the concrete structure designed to catch leaks, some releases contaminated soil and groundwater at the site. Groundwater is the water found underground in the cracks and spaces in soil, sand, and rock.

In the soil, contaminants of concern are:

- Vinyl chloride (a chemical known to cause cancer)
- Benzene (a chemical known to cause cancer)
- Petroleum products (diesel, lube oil, and gasoline)
- Polycyclic Aromatic Hydrocarbons (many PAHs are chemicals known to cause cancer)
- Arsenic (a toxic metal)
- Cyanide (a toxic chemical)

In the groundwater, contaminants of concern are:

- Arsenic
- Iron

Remedial Investigation (RI), Feasibility Study (FS), and draft Corrective Action Plan (CAP)

In 2017, Ecology held a public comment period for the Remedial Investigation (RI) and Feasibility Study (FS) for the Clean Earth Kent site. The RI and FS are important steps in Ecology's cleanup process. Ecology did not receive any comments from the public and we approved the RI/FS study for the facility on March 20, 2018.

Remedial Investigation (RI)

The purpose of the RI is to define the nature and extent of contamination at the site.

Feasibility Study (FS)

The FS used the results from the RI to evaluate how to cleanup the contamination. Of the cleanup alternatives analyzed in the FS, Ecology selected Alternative 1. Alternative 1 treats some contaminated soil, maintains surface cover over remaining contaminated soils, and monitors natural attenuation (MNA) to cleanup site soil and groundwater. MNA tracks the breakdown of soil and groundwater contamination under natural conditions to make sure it is happening at an appropriate rate.

Cleanup Plans

Draft Corrective Action Plan (CAP): The purpose of the CAP is to identify the proposed cleanup action for the site. The proposed remedy in the CAP consists of:

- Institutional Controls such as; maintenance of cover, future land use and groundwater restrictions, deed restrictions and administrative controls;
- Active treatment of remaining source soils at the Site as they become accessible or at Site closure;
- Pavement or concrete surface cover;
- Treatment of arsenic in groundwater by treating the carbon sources caused by human activities where those sources raised arsenic groundwater concentrations; and
- Long-term compliance monitoring.

The [Remedial Investigation \(RI\) report](#)¹² and [Feasibility Study \(FFS\)](#)¹³ are on Ecology's [Clean Earth, LLC's website](#)¹⁴ under the [electronic documents section](#)¹⁵.

Dangerous Waste Permits

Clean Earth, LLC has closed several of its Treatment, Storage and Disposal (TSD) dangerous waste units. They are doing this work under the federal RCRA Act under their TSD Part B Permit. The department of Ecology oversees permits required by RCRA for facilities that deal with hazardous wastes.

Area community

Geography

Kent is located in King County, Washington, United States. It has a total area of 33.7 square miles and is the sixth largest city in the state. Kent is the second oldest incorporated city after

¹² <https://apps.ecology.wa.gov/gsp/DocViewer.ashx?did=67895>

¹³ <https://apps.ecology.wa.gov/gsp/DocViewer.ashx?did=67903>

¹⁴ <https://apps.ecology.wa.gov/gsp/Sitepage.aspx?csid=12484>

¹⁵ <https://apps.ecology.wa.gov/gsp/CleanupSiteDocuments.aspx?csid=12484>

Seattle. It is in the heart of the Seattle–Tacoma metropolitan area, located 19 miles south of Seattle and 19 miles northeast of Tacoma.

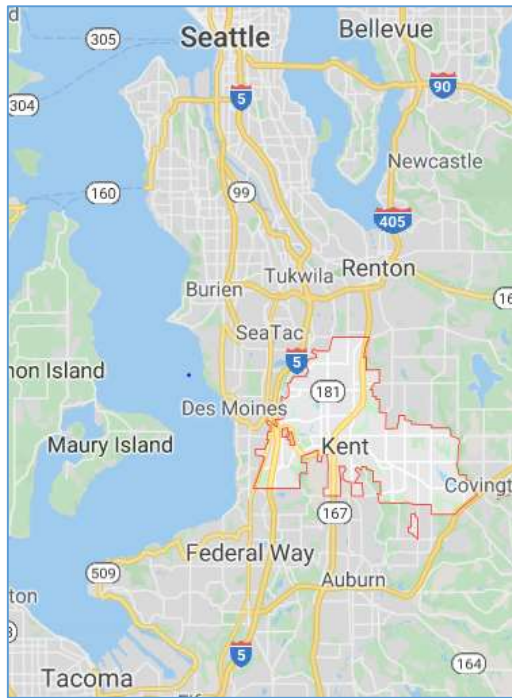


Figure 1: Google map showing location of Kent, WA.

Kent is generally divided into 3 sections:

- West Hill: Located along Interstate 5. This area is zoned for residential and commercial use.
- The Valley: Commercial and industrial area with some medium density residential areas. Significant parkland along the Green River is used for outdoor recreational activities such as walking, hiking, and fishing.
- East Hill: Mostly residential with some retail businesses.

The site is located in the industrial and commercial part of Kent known locally as the Valley.

Environmental Justice and Title VI

Environmental justice (EJ) promotes fair treatment of all people under environmental laws and policies, regardless of their race, color, national origin, or income.

In Washington (and across the United States), more people of color and/or low-income people live and work near industrial facilities, contaminated sites, and in neighborhoods without easy access to fresh food, green spaces, or clean air and water. These conditions negatively and unfairly affect their health and safety.

EJ strategies and compliance with Title VI of the Civil Rights Act are key to addressing these inequities—especially through public involvement. We make every effort to inform and involve all people. To do this, we use demographic information to design our messaging to fit the community.

Demographics

Study area: Kent, WA (population 126,071)

Demographic Indicators	Value	State Average	Percentile in State
Demographic Index	44%	29%	81
Minority Population	54%	30%	86
Low Income Population	33%	28%	65
Linguistically Isolated Population	9%	4%	85
Population with Less Than High School Education	15%	9%	80
Population Under 5 Years of Age	7%	6%	60
Population Over 64 Years of Age	11%	14%	37

Figure 2: EPA's Environmental Justice Screen Standard Report (2020)

People of color and minority population

Ecology ran a demographic analysis using EPA's Environmental Justice Screen (EJSCREEN) tool in 2020, for the city of Kent. The standard report suggests a number of indicators for environmental justice considerations, including:

- Minority population
- Linguistically isolated populations
- Populations with less than high school education

Census data from the 2013-2017 American Community Survey (ACS) indicate the largest racial and ethnic populations are Asian (24,736), Hispanic (19,929), and Black or African American (13,739).

English language proficiency

According to [Language Data \(Census 2015\)](http://teams/sites/EXEC/mitt/LanguageMap/Shared%20Documents/ACS_LanguageData_2015.aspx) for Kent,¹⁶ the population includes several non-English language groups who speak English less than “very well” and make up more than 5% of the population (or total more than 1,000 people). The top three non-English language groups include Spanish (6,879/5.97%), Vietnamese (1,855/1.6%), and Chinese (1,399/1.2%). In addition, after speaking with several local, public schools in the area, we will also be offering translations in Dari and Ukrainian as these are languages widely used in the public schools in Kent.

¹⁶ http://teams/sites/EXEC/mitt/LanguageMap/Shared%20Documents/ACS_LanguageData_2015.aspx

We strive to make our public participation efforts as inclusive as possible and welcome your input about how to best reach the nearby community.

Tribal engagement

Potentially contaminated resources near this site are relied on by the federally recognized Muckleshoot Tribe, Puyallup Tribe, Snoqualmie Tribe, Stillaguamish Tribe, Suquamish Tribe, and Tulalip Tribe that reside in King County. We will invite these Tribes to engage in decision-making during the process on a government-to-government basis.

We will reach out to Tribes to offer opportunities to engage in the cleanup process that are separate from the public involvement process. This engagement is described in a site-specific Tribal Engagement Plan, as required by [WAC 173-340-620](#).¹⁷ We invite Tribal members and other indigenous peoples to engage in the public involvement process as well.

State and Federal Cleanup Laws

In Washington state, we use MTCA and other regulations for cleanup activities on properties that treated, stored, or disposed of hazardous wastes. These cleanups, called **corrective actions**, are required under the federal Resource Conservation and Recovery Act (RCRA). The U.S. Environmental Protection Agency (EPA) sets and enforces environmental standards in the United States. EPA allows Ecology to use MTCA, not RCRA, for cleanups in Washington State

Model Toxics Control Act

Ecology uses the [Model Toxics Control Act \(MTCA\)](#)¹⁸ and accompanying regulations for cleanup activities. MTCA began in 1988 as a citizen-led effort to clean up contaminated sites in Washington state. The law holds property owners or operators responsible for cleaning up contamination on, or coming from, their property.

Ecology carries out MTCA, making sure cleanups happen according to state rules and regulations. These rules are found in [Chapter 173-340 Washington Administrative Code \(WAC\)](#).¹⁹ Ecology investigates reports of contamination, and the property is placed on the [Contaminated Sites List](#)²⁰ if the pollution is determined to pose a serious risk to human health or the environment. This starts the cleanup process at the site.

¹⁷ <https://app.leg.wa.gov/wac/default.aspx?cite=173-340-620>

¹⁸ <https://www.ecology.wa.gov/mtca>

¹⁹ <https://app.leg.wa.gov/wac/default.aspx?cite=173-340>

²⁰ <https://apps.ecology.wa.gov/cleanupsearch/reports/cleanup/contaminated>

The cleanup process under MTCA includes several steps (Appendix A). Public involvement is a key part of MTCA's [cleanup process](#).²¹ Nearby residents, businesses, community groups, and other interested parties can review and comment on documents related to steps that make crucial decisions or plans about the cleanup.

State Environmental Policy Act

MTCA cleanups also require evaluation under the [State Environmental Policy Act \(SEPA\)](#).²² Under SEPA, the potential for significant adverse environmental impacts from a project or action must be evaluated by state and local agencies when making decisions. This evaluation is subject to public review and comment in parallel with cleanup documents.

Resource Conservation and Recovery Act

There are federal and state rules about hazardous wastes. Congress passed RCRA in 1976 to ensure safe management and disposal of hazardous waste. RCRA was updated several times to expand its scope and requirements.

RCRA's goals are to:

- Protect human health and the environment.
- Reduce waste and conserve energy and natural resources.
- Reduce or stop hazardous waste generation.

Treatment, storage, and disposal (TSD) facilities must have a permit to design, operate, maintain, or close their site. RCRA also requires facilities to clean up contamination from past and present practices. These cleanup activities are called **corrective actions**.

Federal RCRA and state dangerous waste regulations require opportunities for public participation during the stages of facility permitting and cleanup.

We apply both the Resource Conservation and Recovery Act (RCRA) and the Model Toxics Control Act (MTCA) regulations to clean up hazardous waste sites. The cleanup protects human health and the environment from dangerous wastes and chemicals.

²¹ <http://www.ecology.wa.gov/MTCA-process>

²² <https://app.leg.wa.gov/WAC/default.aspx?cite=197-11>

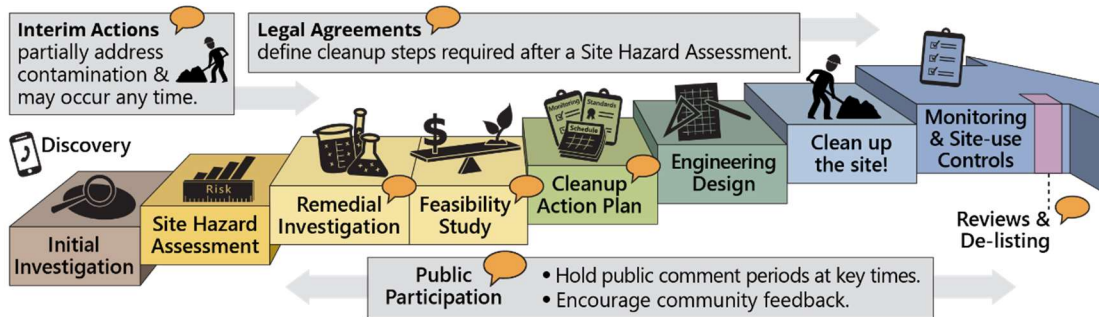


Figure 3: Formal cleanup process infographic (English).

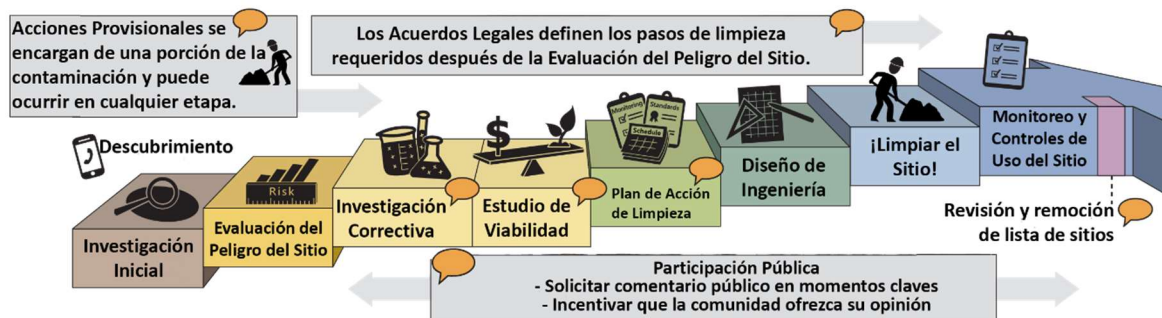


Figure 4: Formal cleanup process infographic (Spanish).



Figure 5: Formal cleanup process infographic (Vietnamese).

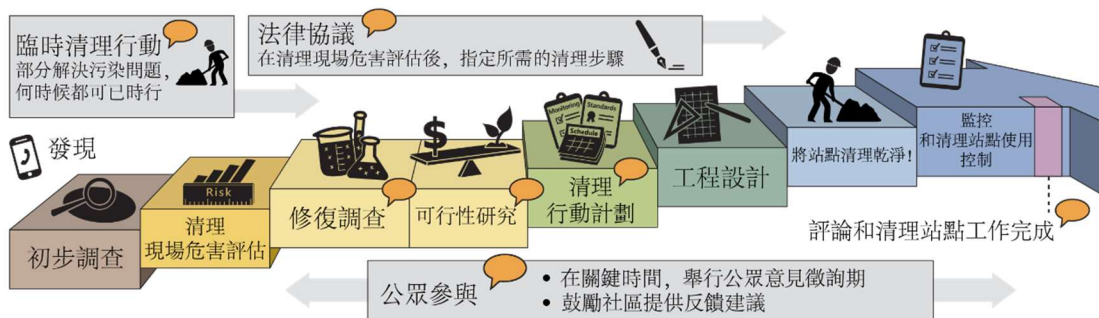
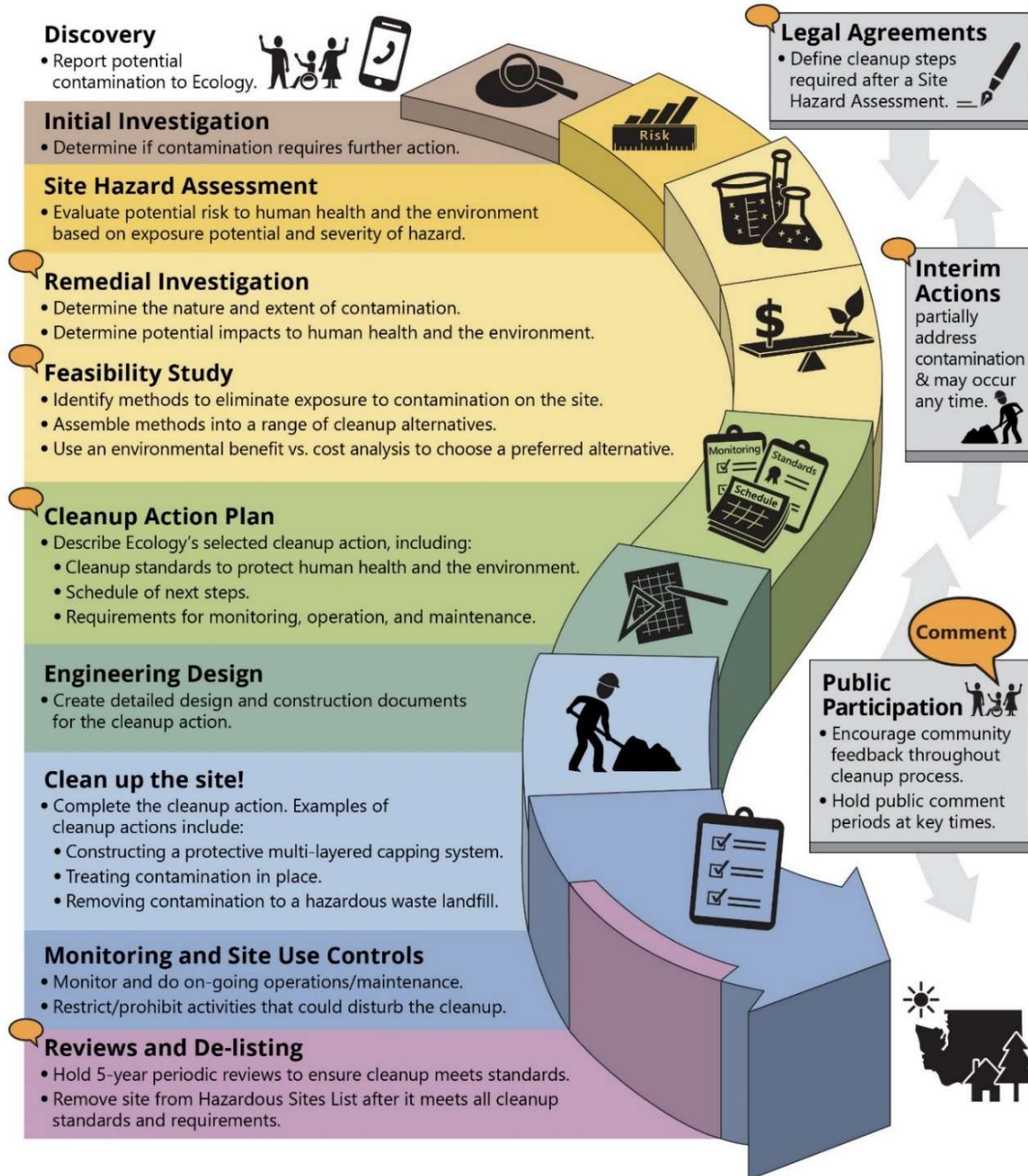


Figure 6: Formal cleanup process infographic (Chinese).

Washington's Formal Cleanup Process



**Washington's
Cleanup Law**
Model Toxics Control Act (MTCA)

MTCA defines the cleanup process. This public-initiated environmental law directs upland cleanups (on land or in groundwater) and sediment cleanups (in freshwater or marine environments). Ecology enacts MTCA and regulates the cleanup process.

September 2019
Ecology Publication 19-09-166

Figure 7: [Washington's formal cleanup process infographic](#).²³

[Read a plain text version of Figure 1](#).²⁴

Plan Amendments

Ecology developed this plan following MTCA regulations (WAC 173-340-600). We review it as the cleanup progresses and amend it as necessary. You may suggest amendments to Janelle Anderson, Community Outreach & Environmental Education Specialist at 425-301-6454 or janelle.anderson@ecy.wa.gov

We intend for this plan to provide the public with information on opportunities for public involvement and comment. The outreach activities discussed reflect Ecology's current plans to keep the public informed. It also provides ways for those interested in the site to communicate their concerns and questions to us.

If you feel the planned outreach activities and mechanisms found in this plan are insufficient or would like to modify them in some way, please contact us. We will work to find solutions. We can implement new activities or outreach tools right away, with or without amending this plan.

²³ <https://apps.ecology.wa.gov/publications/SummaryPages/1909166.html>

²⁴ <https://apps.ecology.wa.gov/publications/parts/1909166part2.pdf>

Appendix A. Steps in the MTCA cleanup process

The cleanup process is defined in the Model Toxics Control Act (MTCA), Washington's cleanup law. See the attached, accessible PDF for details.

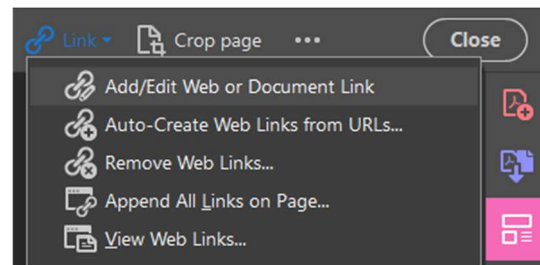
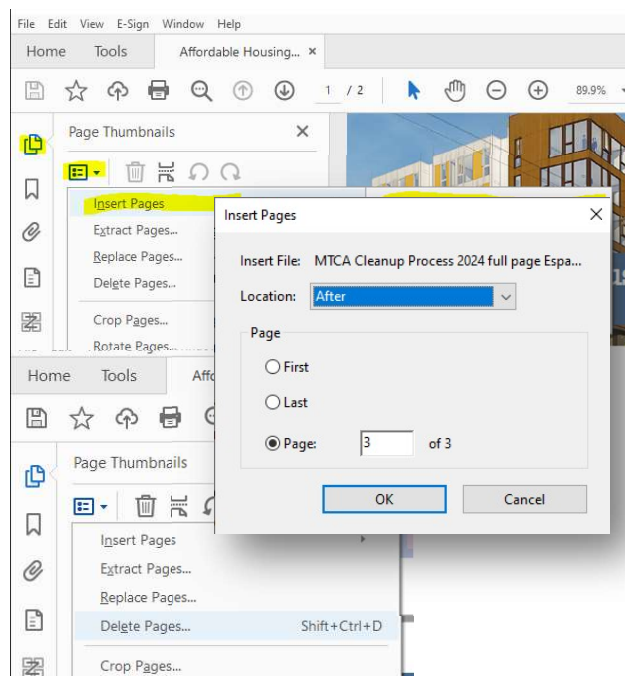
The PDF full-page graphic is navigable and readable by screen-readers. All visible text is properly structured, with headings. The icons, arrows, and stairs are individual images with their own alt-text.

Note: “Public input opportunity” and the associated comment bubble icon are intentionally artifacted. Do **not** add them back into the tags.

To include the full-page graphic in the PPP, you need to combine them at the PDF stage to retain all the accessibility features.

1. This is your ‘placeholder’ page where you want the graphic in Word.
2. The figure label on this page is needed for the table of contents, so don’t delete it. This will include the graphic in that list.
3. Complete the rest of your document normally and export it to PDF.
4. Download the full-page graphic from Biblio.
5. Before you do other accessibility work in Acrobat, open the **Page thumbnails** pane.
6. Click the drop-down arrow in the upper left and choose **Insert Pages** then **From File...**
7. Navigate to where you saved the full-page graphic PDF and select it.
8. Select **Page** and enter the page number of your placeholder page.
9. Still on the **Page thumbnails** pane, click the drop down again and select **Delete Pages...**
10. Select **Delete Pages...** from the same drop-down menu to delete the placeholder page.
11. Scroll to the table of contents.
12. Select **Edit PDF** from the Tool bar on the right.
13. Select **Link > Add/Edit Web or Document Link** from the ribbon at the top.
14. Drag the cursor to create a box around Appendix A. Steps in the MTCA cleanup process in the table of contents.
15. In the dialog box under Link Action, select **Go to page view**. Click **Next**.
16. Scroll to the top of the Appendix A page and click **Set Link** in the dialog box.

The graphic should be in the right place, with tag structure intact. This page won’t have a header or footer, and that’s fine.



Department of Ecology's Region Offices

Map of Counties Served



Southwest Region 360-407-6300	Northwest Region 206-594-0000	Central Region 509-575-2490	Eastern Region 509-329-3400
----------------------------------	----------------------------------	--------------------------------	--------------------------------

Region	Counties served	Mailing Address	Phone
Southwest	Clallam, Clark, Cowlitz, Grays Harbor, Jefferson, Mason, Lewis, Pacific, Pierce, Skamania, Thurston, Wahkiakum	PO Box 47775 Olympia, WA 98504	360-407-6300
Northwest	Island, King, Kitsap, San Juan, Skagit, Snohomish, Whatcom	PO Box 330316 Shoreline, WA 98133	206-594-0000
Central	Benton, Chelan, Douglas, Kittitas, Klickitat, Okanogan, Yakima	1250 W Alder St Union Gap, WA 98903	509-575-2490
Eastern	Adams, Asotin, Columbia, Ferry, Franklin, Garfield, Grant, Lincoln, Pend Oreille, Spokane, Stevens, Walla Walla, Whitman	4601 N Monroe Spokane, WA 99205	509-329-3400
Headquarters	Across Washington	PO Box 47600 Olympia, WA 98504	360-407-6000