

Figure
Benzene Groundwater
Exceedance Contour Plot

Tiki Car Wash
11909 NE 8th Street
Bellevue, WA

Legend

Benzene Groundwater Sample Location

Result in $\mu\text{g/L}$

- 0.3 - 5
- 5 - 900
- 900 - 4,000
- 4,000 - 6,210

Predicted Benzene Exceedance in Groundwater

Predicted Result in $\mu\text{g/L}$

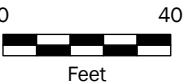
- 5 - 900
- 900 - 4,000
- 4,000 - 6,210

UST (approximate)

Property Boundary

Notes

Predicted results and depth contours interpolated using natural neighbors in ArcGIS Pro v3.5.
Benzene MTCA Method A CUL is $5 \mu\text{g/L}$.
MTCA = Model Toxics Control Act.
CUL = cleanup level.
UST = underground storage tank.



Data Sources

Aerial photograph obtained from Mapbox; parcel data obtained from King County; sample locations from Leidos (2023).



This product is for informational purposes and may not have been prepared for, or be suitable for legal, engineering, or surveying purposes. Users of this information should review or consult the primary data and information sources to ascertain the usability of the information.
© 2025 Maul Foster & Alongi, Inc.

Project: M0592.06.001 Produced By: jroberts Reviewed By: jhansen Print Date: 6/3/2025 Path: X:\0_MFA Projects\M0592.06.001\Pro\M0592_06_001_002.aprx\Fig GW GR0 Exceedance

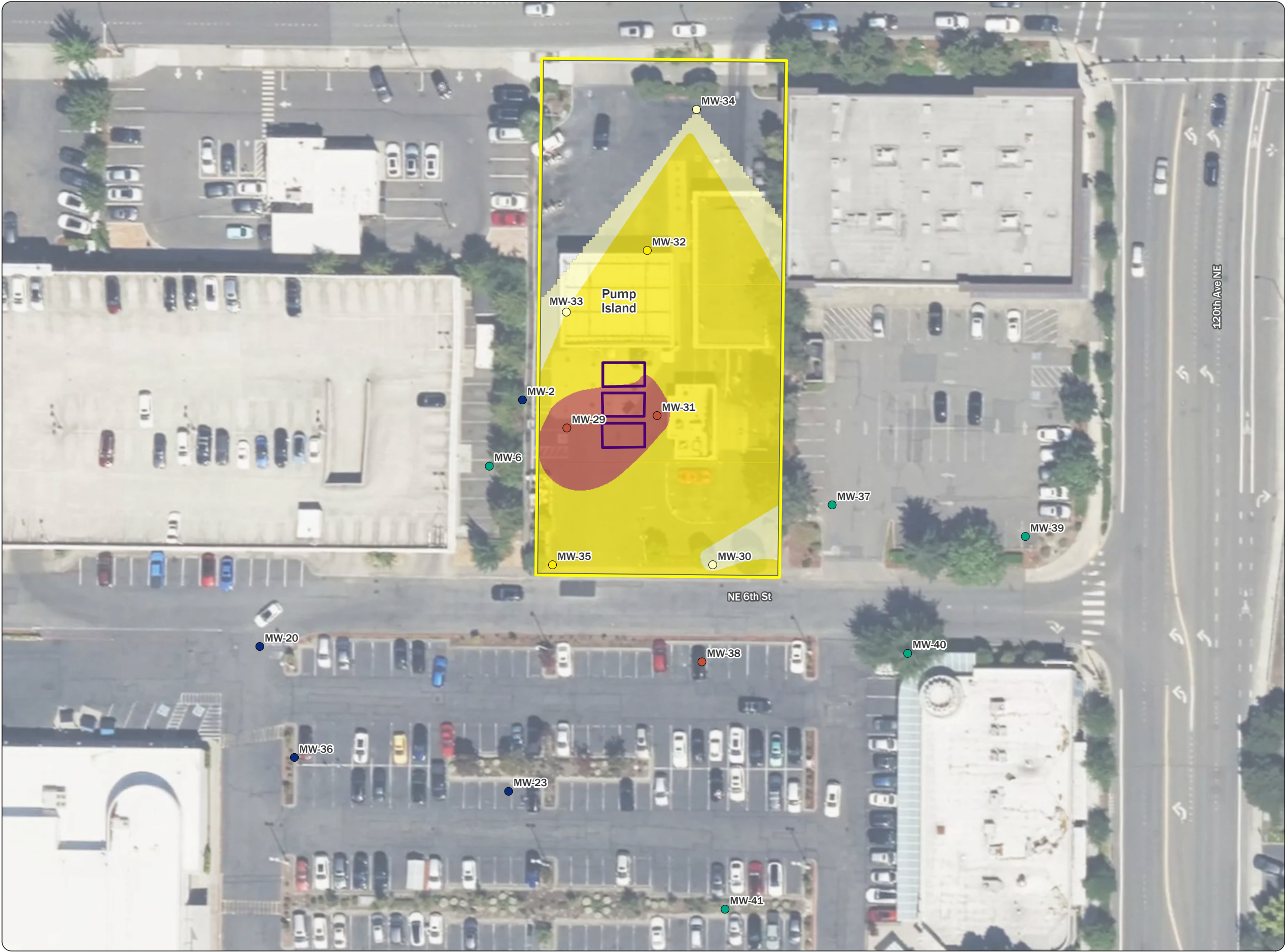


Figure Gasoline-Range Hydrocarbons Groundwater Exceedance Contour Plot

Tiki Car Wash
11909 NE 8th Street
Bellevue, WA

Legend

Gasoline-Range Hydrocarbons Groundwater Sample Location

Result in $\mu\text{g/L}$

- 19 - 30
- 30 - 800
- 800 - 10,000
- 10,00 - 53,000
- 53,000 - 98,800

Predicted Gasoline-Range Hydrocarbons Exceedance in Groundwater

Predicted Result in $\mu\text{g/L}$

- 800 - 10,000
- 10,000 - 53,000
- 53,000 - 98,800

- UST (approximate)
- Property Boundary

Notes
Predicted results and depth contours interpolated using natural neighbors in ArcGIS Pro v3.5. Gasoline-range hydrocarbons MTCA Method A CUL is 800 $\mu\text{g/L}$. MTCA = Model Toxics Control Act. CUL = cleanup level. UST = underground storage tank.



Data Sources
Aerial photograph obtained from Mapbox; parcel data obtained from King County; sample locations from Leidos (2023).

MAUL FOSTER ALONGI
p. 971 544 2139 | www.maulfooster.com

This product is for informational purposes and may not have been prepared for, or be suitable for legal, engineering, or surveying purposes. Users of this information should review or consult the primary data and information sources to ascertain the usability of the information.
© 2025 Maul Foster & Alongi, Inc.

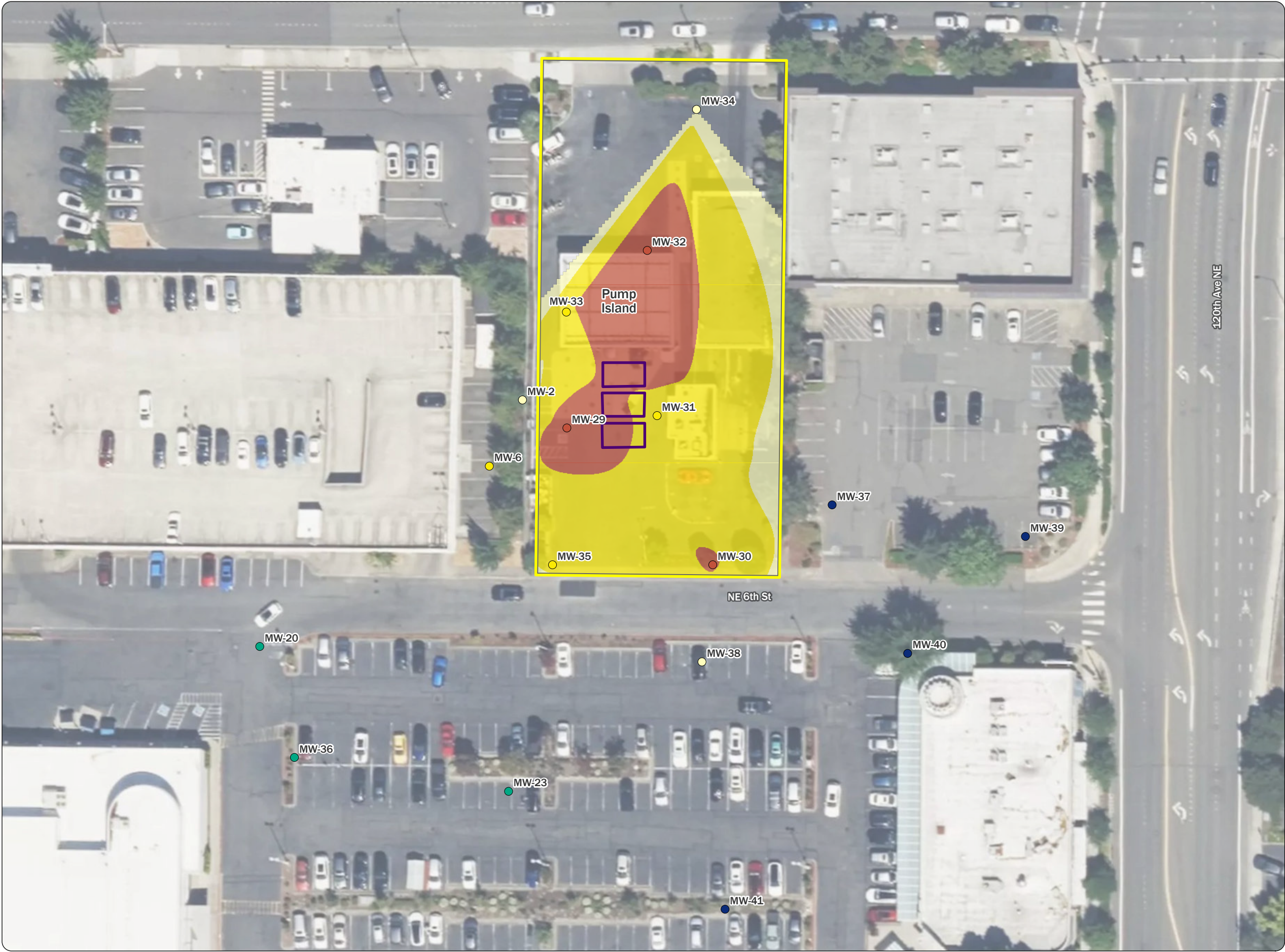


Figure
Diesel+Oil Groundwater
Exceedance Contour Plot

Tiki Car Wash
11909 NE 8th Street
Bellevue, WA

Legend

Diesel+Oil Groundwater Sample Location

Result in $\mu\text{g/L}$

- 110 - 430
- 430 - 500
- 500 - 2,500
- 2,500 - 4,500
- 4,500 - 7,700

Predicted Diesel+Oil Exceedance in Groundwater

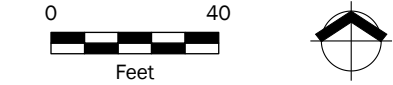
Predicted Result in $\mu\text{g/L}$

- 500 - 2,500
- 2,500 - 4,500
- 4,500 - 7,700

UST (approximate)

Property Boundary

Notes
Predicted results and depth contours interpolated using natural neighbors in ArcGIS Pro v3.5.
Diesel+Oil MTCA Method A CUL is 500 $\mu\text{g/L}$.
Diesel+Oil = the sum of diesel- and oil-range organics.
MTCA = Model Toxics Control Act.
CUL = cleanup level.
UST = underground storage tank.



Data Sources
Aerial photograph obtained from Mapbox; parcel data obtained from King County; sample locations from Leidos (2023).

 **MAUL FOSTER ALONGI**
p. 971 544 2139 | www.maulfooster.com

This product is for informational purposes and may not have been prepared for, or be suitable for legal, engineering, or surveying purposes. Users of this information should review or consult the primary data and information sources to ascertain the usability of the information.
© 2025 Maul Foster & Alongi, Inc.