

Project: M0592.06.002 Produced By: jroberts Reviewed By: jhansen Print Date: 3/27/2025 Path: X:\0_MFA Projects\M0592.06\001-Pro\M0592_06_001_002.aprx\Fig Benzene Contamination

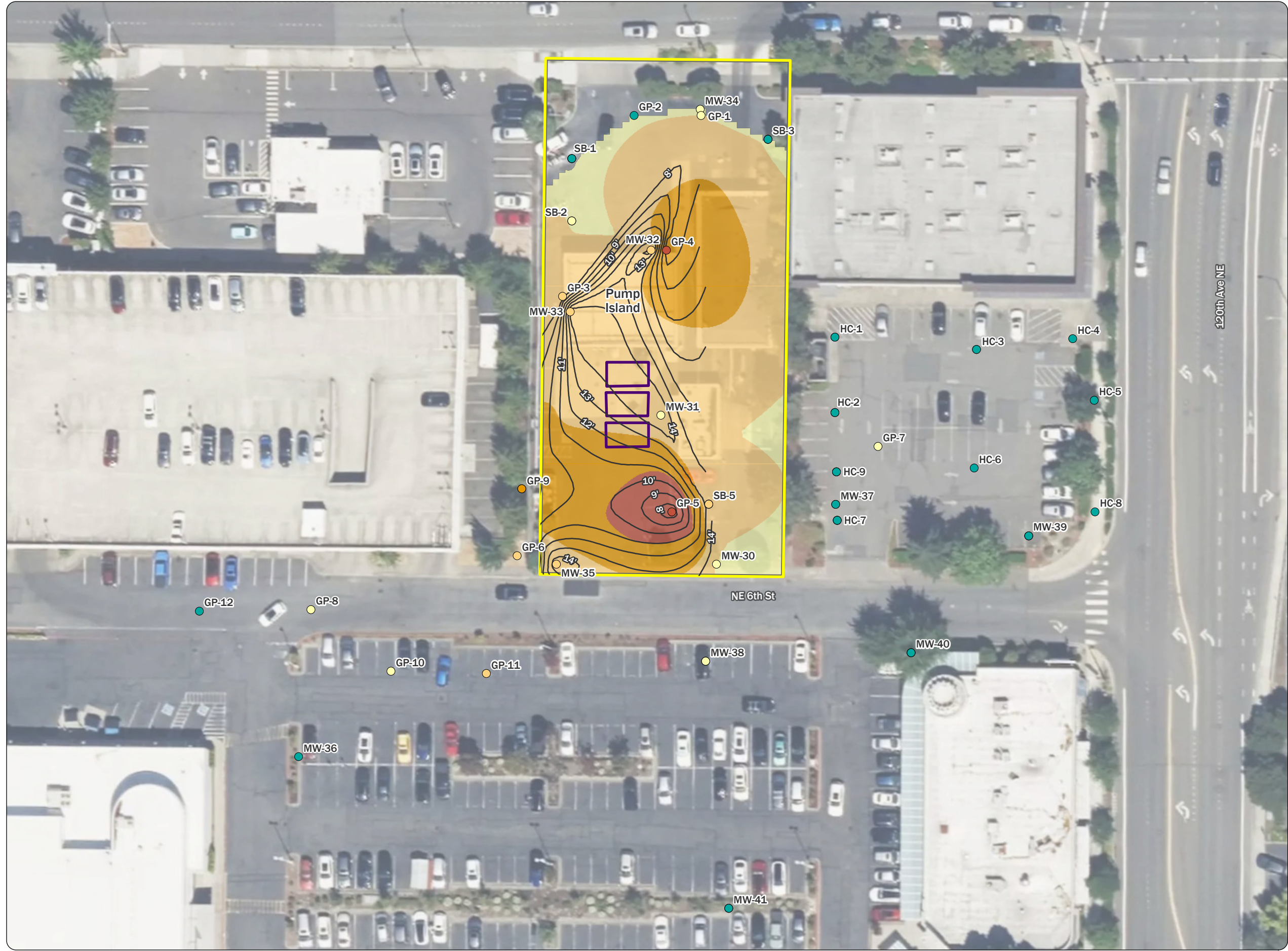


Figure
Benzene Contamination
and Depth
Tiki Car Wash
11909 NE 8th Street
Bellevue, WA 98005

Legend

Benzene Sample Location

Highest Result in mg/kg

- 0.000373 - 0.03
- 0.03 - 1
- 1 - 10
- 10 - 25
- 25 - 50.3

Predicted Exceedance in Benzene

Predicted Result in mg/kg

- 0.03 - 1
- 1 - 10
- 10 - 25
- 25 - 50.3

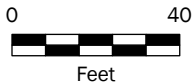
Depth of Exceedance, 1-foot Contour

UST (approximate)

Property Boundary

Notes

Predicted results and depth contours interpolated using natural neighbors in ArcGIS Pro v3.4.3. Benzene MTCA Method A PCUL is 0.03 mg/kg. MTCA = Model Toxics Control Act. PCUL = preliminary cleanup level. UST = underground storage tank.



Data Sources

Aerial photograph obtained from Mapbox; parcel data obtained from King County; sample locations from Leidos (2023).



This product is for informational purposes and may not have been prepared for, or be suitable for legal, engineering, or surveying purposes. Users of this information should review or consult the primary data and information sources to ascertain the usability of the information. © 2025 Maul Foster & Alongi, Inc.

Path: X:\0_MFL_P\Projects\M0592_06\001\Pro\M0592_06_001_002.aprx Fig GRC Contamination
Print Date: 3/27/2025
Reviewed By: Hansen
Produced By: Roberts
Project: M0592_06_002

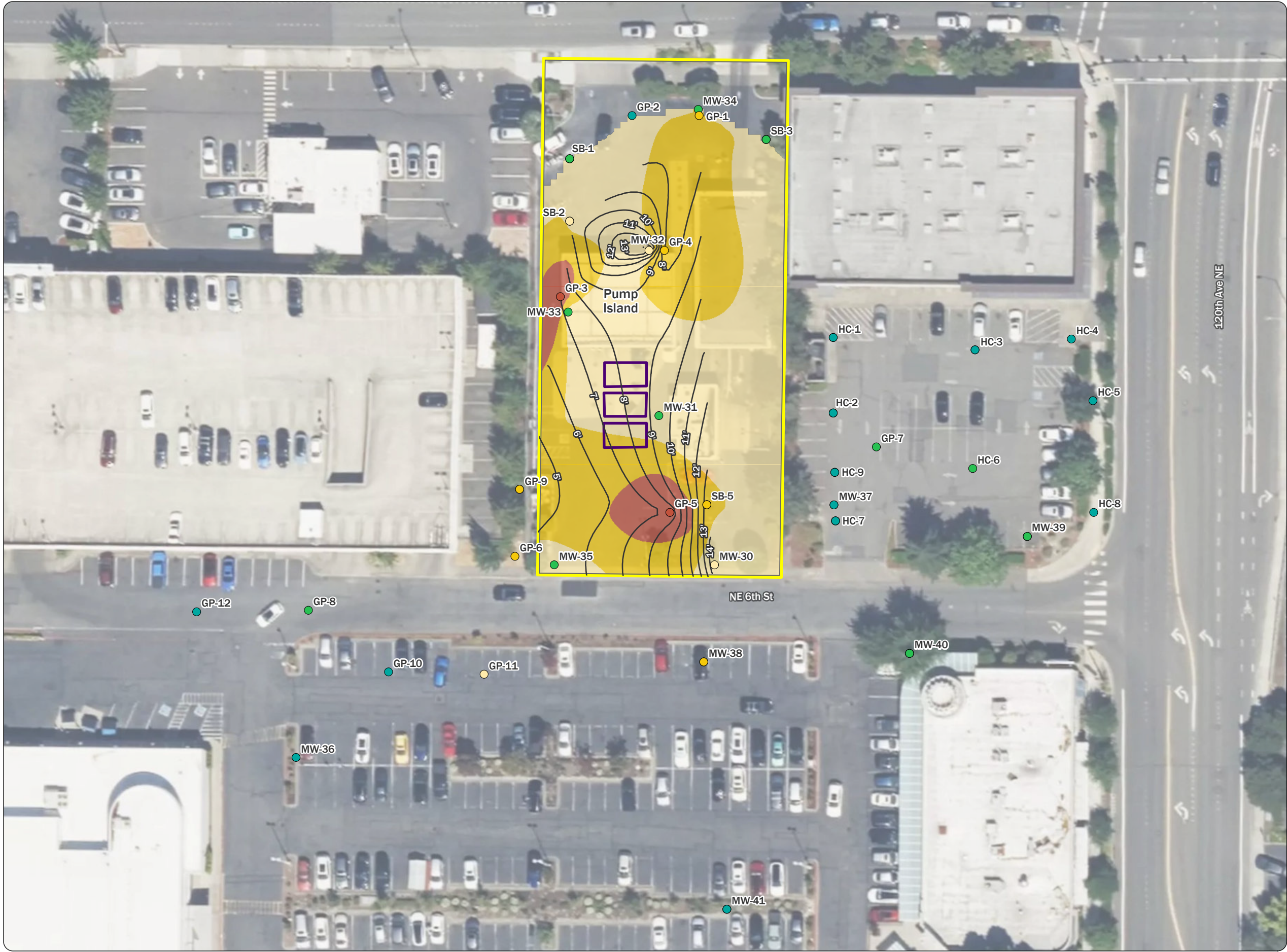


Figure
Gasoline-Range Organics
Contamination and Depth

Tiki Car Wash
11909 NE 8th Street
Bellevue, WA 98005

Legend

Gasoline-Range Organics Sample Location

Highest Result in mg/kg

- 0.203 - 5
- 5 - 30
- 30 - 1,000
- 1,000 - 2,500
- 2,500 - 4,730

Predicted Exceedance in Gasoline-Range Organics

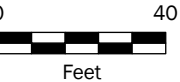
Predicted Result in mg/kg

- 30 - 1,000
- 1,000 - 2,500
- 2,500 - 4,730

Depth of Exceedance, 1-foot Contour

- UST (approximate)
- Property Boundary

Notes
Predicted results and depth contours interpolated using natural neighbors in ArcGIS Pro v3.4.3. Gasoline-range organics MTCA Method A PCUL is 30 mg/kg.
MTCA = Model Toxics Control Act.
PCUL = preliminary cleanup level.
UST = underground storage tank.



Data Sources
Aerial photograph obtained from Mapbox; parcel data obtained from King County; sample locations from Leidos (2023).

MAULFOSTER ALONGI
p. 971 544 2139 | www.maulfooster.com

This product is for informational purposes and may not have been prepared for, or be suitable for legal, engineering, or surveying purposes. Users of this information should review or consult the primary data and information sources to ascertain the usability of the information.
© 2025 Maul Foster & Alongi, Inc.