



Public Participation Plan

Weldcraft Steel & Marine Cleanup Site Bellingham, WA

Toxics Cleanup Program

Washington State Department of Ecology
Northwest Region Office
Shoreline, Washington

Publication 25-09-143, June 2025

Publication Information

This document is available on the Department of Ecology's [Weldcraft Steel and Marine](#)¹ cleanup site page.

Cover photo credit

- View of Weldcraft Steel and Marine Site from pier, 2004, WA State Dept of Ecology

Related Information

- Cleanup Site ID: 1785
- Facility Site ID: 29583133

Contact Information

[Toxics Cleanup Program](#)²

Northwest Region Office

PO Box 330316
Shoreline, WA 98133-9716
Phone: 206-594-0000

Kristen Forkeutis, Outreach Specialist

Kristen.Forkeutis@ecy.wa.gov

425-240-4353

Bellingham Field Office

913 Squalicum Way, Unit 101
Bellingham, WA 98225
Phone: 360-255-4400

John Rapp, Site Manager

John.Rapp@ecy.wa.gov

206-247-3242

ADA Accessibility

The Department of Ecology is committed to providing people with disabilities access to information and services by meeting or exceeding the requirements of the Americans with Disabilities Act (ADA), Section 504 and 508 of the Rehabilitation Act, and Washington State Policy #188.

To request an ADA accommodation, contact the Ecology ADA Coordinator by phone at 360-407-6831 or email at ecyadacoordinator@ecy.wa.gov. For Washington Relay Service or TTY call 711 or 877-833-6341. Visit [Ecology's website](#)³ for more information.

Language Access

The Department of Ecology offers free translation and interpretation services. If you need help in your preferred language, please call Kristen Forkeutis at 425-240-4353 and request an interpreter, or email Kristen.Forkeutis@ecy.wa.gov.

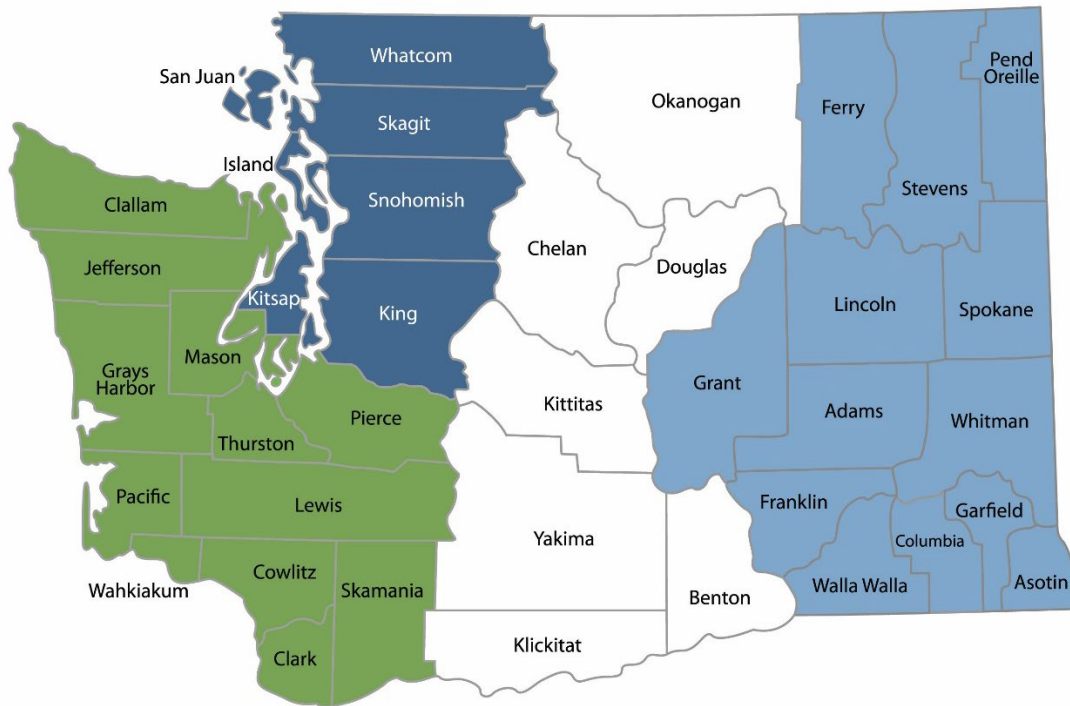
¹ <https://apps.ecology.wa.gov/cleanupsearch/site/1785>

² <https://ecology.wa.gov/About-us/Who-we-are/Our-Programs/Toxics-Cleanup>

³ <https://ecology.wa.gov/about-us/accessibility-equity/accessibility>

Department of Ecology's Region Offices

Map of Counties Served



Southwest Region
360-407-6300

Northwest Region
206-594-0000

Central Region
509-575-2490

Eastern Region
509-329-3400

Region	Counties served	Mailing Address	Phone
Southwest	Clallam, Clark, Cowlitz, Grays Harbor, Jefferson, Mason, Lewis, Pacific, Pierce, Skamania, Thurston, Wahkiakum	PO Box 47775 Olympia, WA 98504	360-407-6300
Northwest	Island, King, Kitsap, San Juan, Skagit, Snohomish, Whatcom	PO Box 330316 Shoreline, WA 98133	206-594-0000
Central	Benton, Chelan, Douglas, Kittitas, Klickitat, Okanogan, Yakima	1250 W Alder St Union Gap, WA 98903	509-575-2490
Eastern	Adams, Asotin, Columbia, Ferry, Franklin, Garfield, Grant, Lincoln, Pend Oreille, Spokane, Stevens, Walla Walla, Whitman	4601 N Monroe Spokane, WA 99205	509-329-3400
Headquarters	Across Washington	PO Box 47600 Olympia, WA 98504	360-407-6000

Table of Contents

Public Involvement in Contamination Cleanup	6
Site contacts.....	6
Public Participation Activities	6
How we share information with the community.....	7
How to share information with us	8
Public Participation Grants	9
Site Information.....	10
Site background	10
Contamination	10
Previous cleanup work.....	11
Status of cleanup	11
Bellingham Bay Cleanup	11
Neighborhood	12
Environmental Justice	14
Area Community	17
Tribal engagement	18
Washington’s Cleanup Laws	18
Model Toxics Control Act.....	18
State Environmental Policy Act.....	19
Plan Amendments	19
Appendices	20
Appendix A. Steps in the MTCA cleanup process	20

List of Figures

Figure 1: Aerial view of Weldcraft Steel and Marine site	10
Figure 2: Weldcraft Steel and Marine site facing southwest, June 1961	10
Figure 3: Loading contaminated sediment into a barge during the 2004 interim action	11
Figure 4: City of Bellingham City Center Neighborhood aerial photo	12
Figure 5: City of Bellingham City Center Neighborhood zoning map	13
Figure 6: City of Bellingham City Center Neighborhood current land use map	13
Figure 7: Washington Environmental Health Disparities Map for census tract 000400 with an environmental health risk ranking of 3.....	14
Figure 8: Washington Environmental Health Disparities Map demographic details (age/sex) ...	15
Figure 9: Washington Environmental Health Disparities Map demographic details (race)	15

Public Involvement in Contamination Cleanup

The Washington State Department of Ecology (Ecology) developed this public participation plan (plan). The purpose of the plan is to promote meaningful community involvement during cleanup of the Weldcraft Steel and Marine cleanup site.

This plan outlines how Ecology will keep the public informed about contamination investigations and cleanup options at each stage of the process. Please review Appendix A for more information about the cleanup process. The plan also details when and how the community can participate in the cleanup process. We encourage the public to engage with the decision-making opportunities and provide input.

Site contacts

To be included in the site record, comments about the cleanup process must be submitted during comment periods. Questions and informal comments or information about the site's history are welcome anytime.

WA Dept of Ecology

Northwest Region Office

PO Box 330316
Shoreline, WA 98133-9716
Phone: 206-594-0000

Kristen Forkeutis, Outreach Specialist

Kristen.Forkeutis@ecy.wa.gov

425-240-4353

Bellingham Field Office

913 Squalicum Way, Unit 101
Bellingham, WA 98225
Phone: 360-255-4400

John Rapp, Site Manager

John.Rapp@ecy.wa.gov

206-247-3242

If you are unable to reach these contacts, please visit the [Weldcraft Steel and Marine cleanup site page](#)⁴ for up-to-date contact information.

Public Participation Activities

Members of the public may ask questions, submit informal comments, or share site information at any time. Interested parties do not need to wait for a formal public comment period to contact Ecology.

However, to be included in the formal site record, comments about the site investigation, cleanup alternatives, or cleanups must be submitted during formal comment periods. In addition, the public is invited to review site documents before they become final. This is the most direct and influential way to learn more about the site and be involved in the cleanup's decision-making.

⁴ <https://apps.ecology.wa.gov/cleanupsearch/site/1785>

How we share information with the community

During specific stages of the cleanup, Ecology will mail notices about public comment periods to addresses surrounding the site. The mailing list area will vary depending on the type of contamination and where it's located. However, the list will at least include addresses within a 1/4-mile radius of the site and other interested organizations and individuals. These notices will provide general information about the site, contact information for submitting comments, and times and locations of public meetings or hearings or how to request one if not yet scheduled.

Comment period notices will be available online and at document repositories (for example at the library closest to the site). Notices may also be posted in various locations throughout the community (for example, local businesses, schools, or post offices).

Ecology may also develop documents outside of comment periods to keep the community updated on the site's status. These informational documents will be available online and print copies may be mailed to the nearby community if we feel the message warrants the associated cost and resources.

Postal mailing list

Ecology maintains a mailing list that includes addresses within at least a 1/4-mile radius of the site and relevant local, state, and federal government contacts. All contacts receive public comment notices when draft documents are available.

We will add additional individuals, organizations, and other interested parties to the mailing list as requested. If you would like to be added to the mailing list for this site, please contact Kristen Forkeutis at 425-240-4353 or Kristen.Forkeutis@ecy.wa.gov.

Contaminated Site Register

Public comment periods, events, and other cleanup notices are published in Ecology's [Contaminated Site Register](#).⁵ To receive the *Contaminated Site Register* by email, please [subscribe online](#),⁶ or contact Sarah Kellington at sarah.kellington@ecy.wa.gov or 360-280-3167.

Newspaper display ads or legal notices

We announce public comment periods and events for this site in ads or notices published in the *Bellingham Herald* newspaper. We will also publish notice on our [Public Input & Events Listing webpage](#).⁷

Email lists

Ecology maintains an email list to update interested persons about this site. If you would like to be added to the email list for this site, please contact Kristen Forkeutis at 425-240-4353 or Kristen.Forkeutis@ecy.wa.gov.

⁵ <https://ecology.wa.gov/Regulations-Permits/Guidance-technical-assistance/Site-Register-lists-and-data>

⁶ <https://ecology.wa.gov/site-register>

⁷ <https://ecology.wa.gov/Events/Search/Listing>

Ecology's website and social media platforms

We maintain a website for the [Weldcraft Steel and Marine site](#).⁸ The website provides site information, and you may download cleanup documents.

We may also share information about cleanup sites through [news releases, our ECOconnect blog, and social media](#).⁹

Automatic site updates

You can subscribe to this site from our Weldcraft Steel and Marine webpage. You'll receive a weekly email if we change the site's status, add documents to the site's webpage, or open a comment period.

Places to see print documents

During public comment periods, you can find print documents at the following locations:

Bellingham Public Library, Central Branch
210 Central Avenue
Bellingham, WA 98225
Phone: 360-778-7823

Washington Department of Ecology
Bellingham Field Office
913 Squalicum Way, Unit 101
Bellingham, WA 98225

To schedule an appointment, please contact the Bellingham Field Office administration staff at 360-255-4400 or ECYDLBFOADMINISUPPORT@ecy.wa.gov.

If you would like to be mailed print documents, please contact Kristen Forkeutis at 425-240-4353 or Kristen.Forkeutis@ecy.wa.gov.

Signs around the cleanup site

We may also install signs displaying information about project status, traffic impacts, and health risks around the cleanup site.

How to share information with us

We hold public comment periods and sometimes public events to learn your thoughts, opinions, and concerns about cleanup at a site. We may also identify public concerns and cleanup goals by meeting with and soliciting information from interested community members and organizations. To collaborate with us about this site, please contact Kristen Forkeutis at 425-240-4353 or Kristen.Forkeutis@ecy.wa.gov.

Public comment periods

At a minimum, the Model Toxics Control Act (MTCA, see page 18 for more information) requires 30-day comment periods to allow interested members of the public to comment on

⁸ <https://apps.ecology.wa.gov/cleanupsearch/site/1785>

⁹ <https://ecology.wa.gov/about-us/who-we-are/news>

draft documents, legal agreements, and proposed cleanup actions. If there is significant interest, Ecology may extend the public comment period.

When Ecology oversees the State Environmental Policy Act (SEPA) determinations (see page 19 for more information), we hold comment periods for at least two weeks and may extend to 30 days or more when other cleanup documents are concurrently available for review.

Following a comment period, we publish all the input we received and respond to significant comments and questions, as appropriate. If the comments result in significant changes to the cleanup documents, then the documents will be revised and re-issued for public review. If the comments do not result in significant changes, the documents will become final.

Public events

We hold public meetings, workshops, open houses, and hearings based on community interest. At meetings, workshops, and open houses, attendees can ask questions, learn more about the site, and submit written comments when a comment period is open. At a public hearing, verbal comments are transcribed for the record, and Ecology responds to them after the comment period in our response to comments.

If we have not scheduled an event, we will hold one if 10 or more people request it. This may cause us to extend a public comment period, so the event occurs during it.

Events are held at locations close to the site that meet Americans with Disabilities Act standards. Public events are always announced in advance using a variety of methods.

Public Participation Grants

Grants may be available to neighborhood committees, non-profits, and other groups interested in the site. For contaminated sites, these funds can be used to:

- Hire an expert to help interpret technical information
- Conduct activities that enhance the public's understanding of, and participation in, the cleanup process

For more information about public participation grants, please contact Laura Busby at 360-280-5088 or laura.busby@ecy.wa.gov and Wendy Kovach at 564-250-2909 or wendy.kovach@ecy.wa.gov. You may also visit the [Public Participation Grant website](#).¹⁰

¹⁰ <https://ecology.wa.gov/PPG>

Site Information

Site background

The site is located at 2652 N Harbor Loop Drive, adjacent to Squalicum Harbor on the Bellingham Bay waterfront. The site is about 3.3 acres (2.5 acres on land and 0.8 acres in the water).

Weldcraft Steel and Marine operated on the property between 1946 and 2000. Various activities took place, including boat construction, repair, and maintenance; wood and metal fabrication; painting; canvas and plastic work; and concrete work. Since 2004, the property has been occupied by a boat repair company that is unassociated with the contamination being addressed. The Port of Bellingham owns both the upland and in-water portions of the site.

Contamination

Past environmental investigations found contamination in soil, groundwater, and sediment above WA State cleanup levels:

- **Soil:** petroleum hydrocarbons, metals, and volatile organic compounds.
- **Groundwater:** petroleum hydrocarbons, metals, and volatile organic compounds.
- **Sediment:** metals and polycyclic aromatic hydrocarbons. This contamination was addressed by the previous cleanup work in 2004.



Figure 1: Aerial view of Weldcraft Steel and Marine site



Figure 2: Weldcraft Steel and Marine site facing southwest, June 1961

Previous cleanup work

In 2004 the Port completed an interim action (early partial cleanup) at the site. Approximately 6,800 cubic yards of contaminated in-water sediment and a marine railway were removed and disposed of at a permitted landfill. The dredged areas were then backfilled with clean sand.

Status of cleanup

In 2025 Ecology will finalize the following documents after considering all the comments received during the public comment period:

- **Cleanup Action Plan:** Ecology's plan describing the cleanup work to address contamination at the site.
- **Agreed Order:** Legal agreement between Ecology and the Port of Bellingham (Port) requiring the Port to design the cleanup action plan.
- **State Environmental Policy Act – Determination of Non-Significance:** Ecology's determination that the cleanup work is not likely to harm the environment.
- **Public Participation Plan:** Describes how Ecology will inform the community about the site activities and ways to become involved.

Any new or amended legal agreements will be available for review during a future public comment period. Construction of the cleanup action is anticipated to begin between 2026 and 2028.

Bellingham Bay Cleanup

The Weldcraft Steel and Marine site is one of 12 [Bellingham Bay Cleanup sites](https://www.ecology.wa.gov/BellinghamBayCleanup)¹¹ coordinated through the Bellingham Bay Action Team (BBAT). BBAT is a bay-wide multi-agency effort to clean up contaminated sediment, control sources of sediment contamination, and restore habitat, with consideration for land and water uses.



Figure 3: Loading contaminated sediment into a barge during the 2004 interim action

¹¹ <https://www.ecology.wa.gov/BellinghamBayCleanup>

Neighborhood

The site is within Bellingham's [City Center Neighborhood](#)¹² (see Figure 4) on Bellingham's waterfront. It is bordered by Squalicum Harbor/Bellingham Bay to the south, several seafood companies to the west, North Harbor Loop Drive to the north, and South Harbor Loop Drive to the east.

The Port owns the upland property on the site and leases it primarily for marine trades (boat repair, maintenance, and fabrication work). The site is zoned for industrial, light/mixed land use (see Figures 5 and 6).

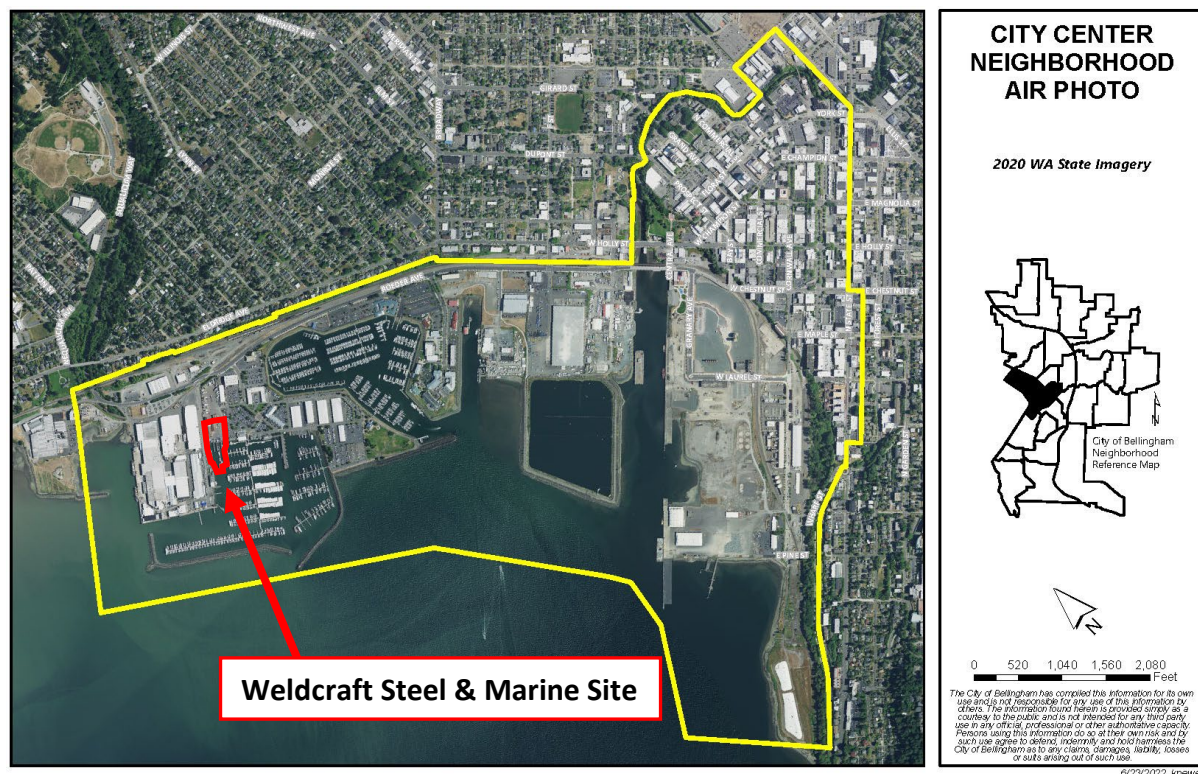


Figure 4: City of Bellingham City Center Neighborhood [aerial photo](#)¹³

¹² <https://cob.org/services/planning/neighborhoods/cbd-2>

¹³ <https://cob.org/wp-content/uploads/CBD-AirPhoto.pdf>

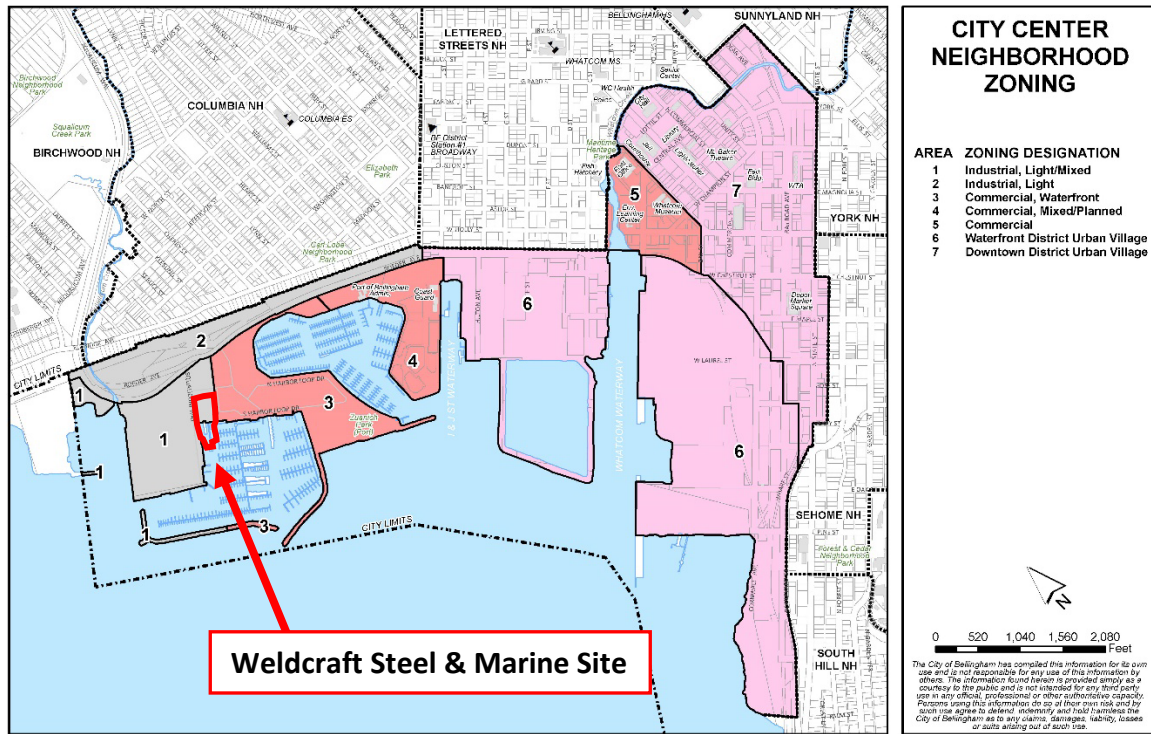


Figure 5: City of Bellingham City Center Neighborhood [zoning map](#) ¹⁴

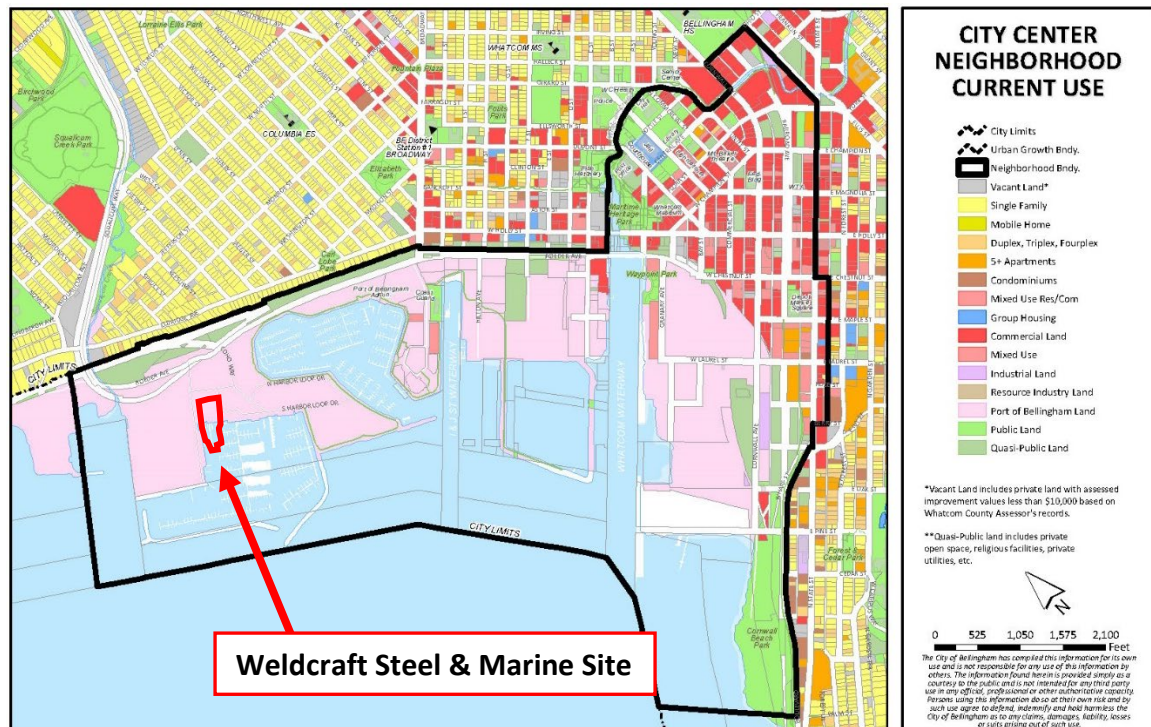


Figure 6: City of Bellingham City Center Neighborhood [current land use map](#) ¹⁵

¹⁴ <https://cob.org/wp-content/uploads/cbd-color-zoning.pdf>

¹⁵ <https://cob.org/wp-content/uploads/CBD-CurrentUse.pdf>

Environmental Justice

Ecology uses external data sources to better understand the environmental and demographic information of the communities impacted by cleanup sites. When appropriate Ecology considers special accommodations based on the needs of the community.

WA Environmental Health Disparities Map

The [Washington Environmental Health Disparities Map](https://doh.wa.gov/data-and-statistical-reports/washington-tracking-network-wtn/washington-environmental-health-disparities-map)¹⁶ evaluates environmental health risk factors in communities.

Ecology does not interpret rankings as absolute values, and we do not use them to diagnose a community health issue or to label a community. Environmental health disparity is ranked on a scale of 1-10 (low to high) and is relative to other locations in the state. Census tract 000400, where the Weldcraft Steel and Marine site is located, has an environmental health risk ranking of 3 (see Figure 7). Additionally, the demographic details show that the largest age ranges are 35-49 and 65 and older (see Figure 8), while White and Hispanic individuals make up the largest racial groups in the population (see Figure 9).

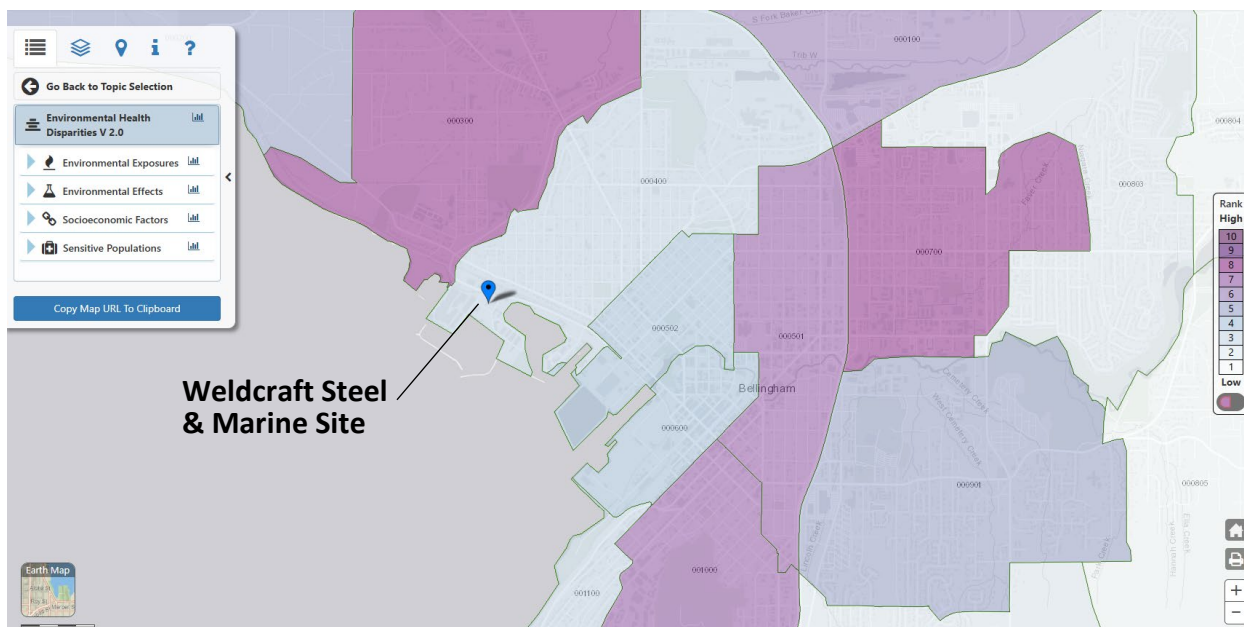


Figure 7: Washington Environmental Health Disparities Map for census tract 000400 with an environmental health risk ranking of 3

¹⁶ <https://doh.wa.gov/data-and-statistical-reports/washington-tracking-network-wtn/washington-environmental-health-disparities-map>

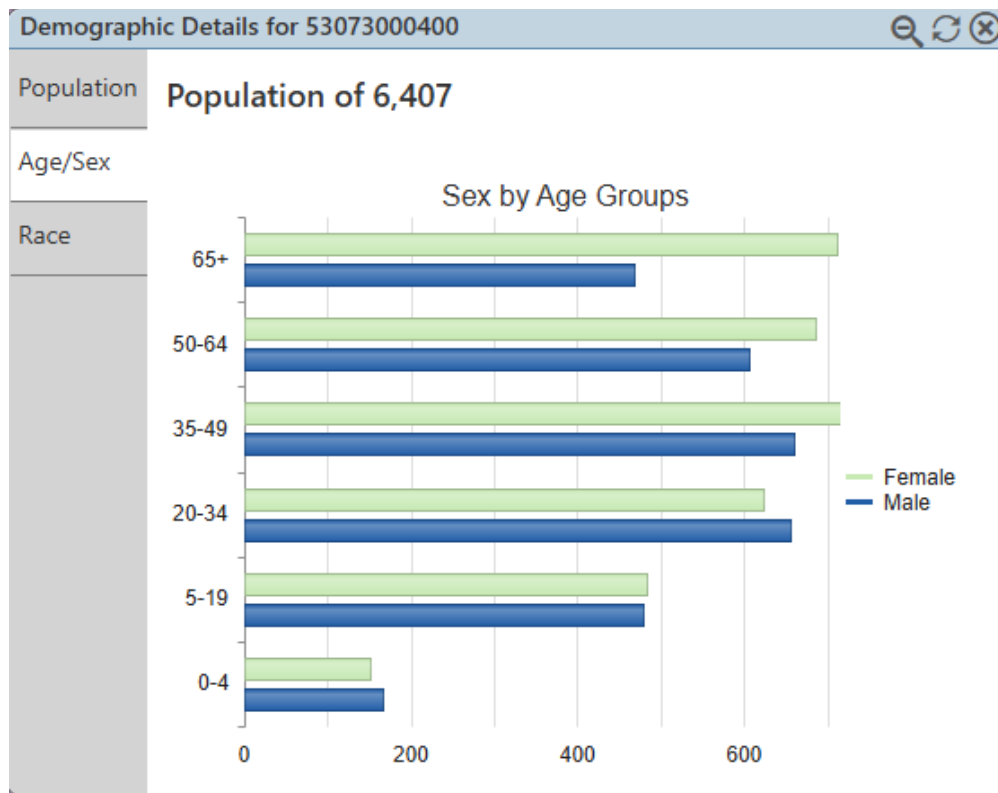


Figure 8: Washington Environmental Health Disparities Map demographic details (age/sex)

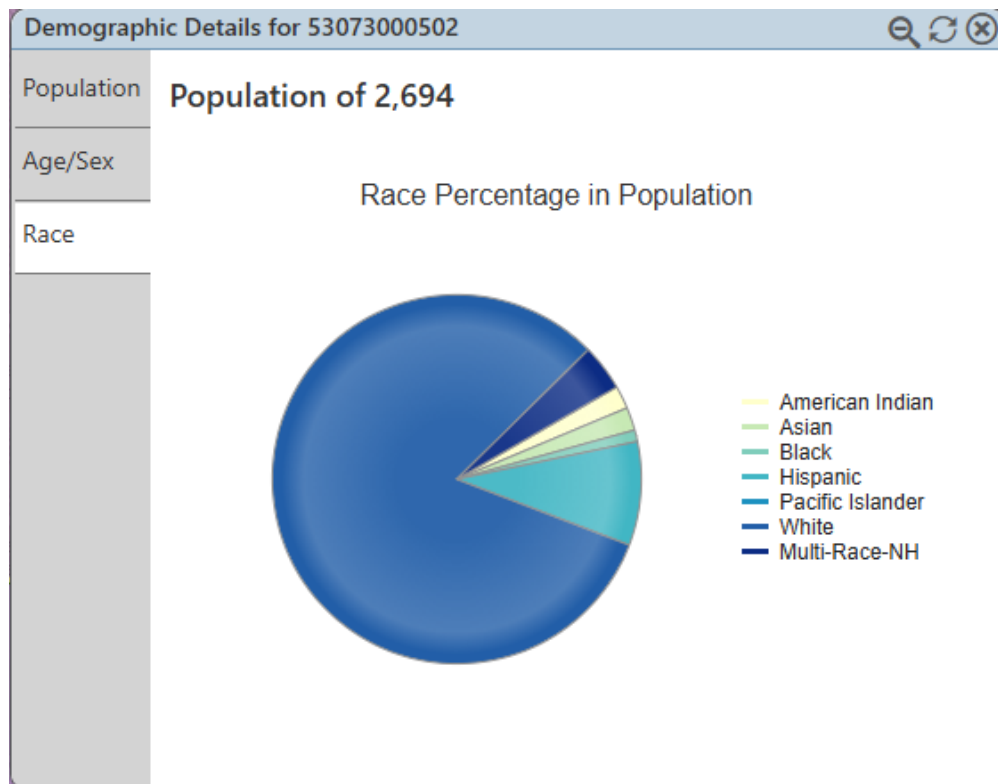


Figure 9: Washington Environmental Health Disparities Map demographic details (race)

The Washington State Department of Health mapping tool model was “specifically adapted from CalEnviroScreen – a cumulative environmental impacts assessment mapping tool developed by CalEPA and used in California. It estimates a cumulative environmental health impact score for each census tract reflecting pollutant exposures and factors that affect people’s vulnerability to environmental pollution.

The model is based on a conceptual formula of Risk = Threat * Vulnerability, where threat and vulnerability are based on several indicators.

The threat is represented by indicators that account for pollution burden, which is a combination of environmental effects and environmental exposures in communities. Environmental effects include indicators that account for adverse environmental quality generally, even when population contact with an environmental hazard is unknown or uncertain. Environmental exposures include the levels of certain pollutants that populations come into contact with.

Vulnerability is represented by indicators of socioeconomic factors and sensitive populations for which there is clear evidence that they may affect susceptibility or vulnerability to an increased pollution burden. Indicators in socioeconomic factors measure population characteristics that modify the pollution burden itself. Sensitive populations refer to those who are at greater risk due to intrinsic biological vulnerability to environmental stressors.

In the model, threat is multiplied by vulnerability in order to reflect the scientific literature that indicates population characteristics often modify and amplify the impact of pollution exposures on certain vulnerable populations. The rankings help to compare health and social factors that may contribute to disparities in a community.”

American Community Survey

The [American Community Survey \(ACS\)](https://www.census.gov/programs-surveys/acs/about.html)¹⁷ is an ongoing survey conducted by the U.S. Census Bureau. It provides updated yearly data on the social, economic, housing, and demographic characteristics of the U.S. population. Ecology uses this information to help identify socioeconomic indicators and limited English proficient (LEP) populations.

2023 regional ACS data from Block Group 1, Census Tract 4.02, where the Weldcraft Steel and Marine site is located, includes the following race and ethnicity data based on a total population of 1,596 people.

Race and ethnicity data of the 1,596 people in Block Group 1:

- White: 1,356
- Not Hispanic or Latino: 1,332
- Two or More Races: 149
- Hispanic or Latino: 93
- Asian: 39

¹⁷ <https://www.census.gov/programs-surveys/acs/about.html>

- Some Other Race: 32
- American Indian and Alaska Native: 11
- Black or African American: 9 people
- Native Hawaiian and Other Pacific Islander: 0 people

2023 ACS 5-year estimates at the PUMA (Public Use Microdata Areas) level includes the following Limited English Proficiency data for Whatcom County (South), Greater Bellingham City, with a total population of 113,795 people.

Limited English Proficiency data of the 113,795 people in Whatcom County (South):

- Spanish: 1,586
- Chinese (includes Cantonese, Mandarin, and Min Nan Chinese): 386
- Vietnamese: 242
- Punjabi: 184
- Russian: 158
- Korean: 102
- French: 106
- Tagalog: 97
- Arabic: 85
- Italian: 61
- Turkish: 54
- Romanian: 40
- Thai: 36
- Japanese: 30
- Filipino: 26
- German: 22
- Hindi: 11
- Portuguese: 11
- Dutch: 8
- Danish: 4
- Other Native North American languages: 3

Area Community

Data from the WA Environmental Health Disparities Map and the American Community Survey, in conjunction with community research, helps Ecology plan our public outreach to consider this population's needs.

As part of our public involvement efforts, Ecology will reach out to cultural community organizations (when available) and provide information in other languages as needed and in

accordance with [federal guidance](#).¹⁸ Data and community research indicates that the non-English language most widely spoken in the area is Spanish. Less than 1.5% of the Spanish speaking population of Whatcom County (South) have limited English proficiency. In response, fact sheets for this site will include contact information for Spanish speakers to request translation services.

To request information in another language, call Kristen Forkeutis at 425-240-4353 or email Kristen.Forkeutis@ecy.wa.gov. If calling for interpretation services, please ask for an interpreter and stay on the line while we connect you.

We strive to make our public participation efforts as inclusive as possible and welcome your input about how to best reach the nearby community.

Tribal engagement

The following Tribes could be affected by the contamination, and the cleanup process may also uncover cultural resources.

- Nooksack Tribe
- Lummi Nation
- Tulalip Tribes
- Swinomish Tribe
- Upper Skagit Tribe

We will reach out to these Tribes to offer opportunities to engage with Ecology in the cleanup process.

Washington's Cleanup Laws

Ecology uses the [Model Toxics Control Act \(MTCA\)](#).¹⁹ and accompanying regulations for cleanup activities. Passed in 1989, MTCA provides guidelines for contaminated site cleanup in Washington state. This law sets standards to ensure the cleanup protects human health and the environment. MTCA requires the creation of this plan.

Model Toxics Control Act

MTCA began in 1988 as a citizen-led effort to clean up contaminated sites in Washington state. The law holds property owners or operators responsible for cleaning up contamination on, or coming from, their property.

Ecology carries out MTCA, making sure cleanups happen according to state rules and regulations. These rules are found in [Chapter 173-340 Washington Administrative Code \(WAC\)](#).²⁰ Ecology investigates reports of contamination, and the property is placed on the

¹⁸ <https://www.federalregister.gov/documents/2004/06/25/04-14464/guidance-to-environmental-protection-agency-financial-assistance-recipients-regarding-title-vi>

¹⁹ <https://www.ecology.wa.gov/mtca>

²⁰ <https://apps.ecology.wa.gov/publications/publications/9406.pdf>

[Contaminated Sites List](#),²¹ if the pollution is determined to pose a serious risk to human health or the environment. This starts the cleanup process at the site.

The cleanup process under MTCA includes several steps (Appendix A). Public involvement is a key part of MTCA's [cleanup process](#).²² Nearby residents, businesses, community groups, and other interested parties can review and comment on documents related to steps that make crucial decisions or plans regarding the cleanup.

State Environmental Policy Act

MTCA cleanups also require evaluation under the [State Environmental Policy Act \(SEPA\)](#).²³ Under SEPA, the potential for significant adverse environmental impacts from a project or action must be evaluated by state and local agencies when making decisions. This evaluation is subject to public review and comment in parallel with cleanup documents.

Plan Amendments

Ecology developed this plan following MTCA regulations (WAC 173-340-600). We review it as the cleanup progresses and amend it as necessary. You may suggest amendments to Kristen Forkeutis at 425-240-4353 or Kristen.Forkeutis@ecy.wa.gov.

This plan intends to provide the public with information on opportunities for public involvement and comment. The outreach activities discussed reflect Ecology's current plans to keep the public informed. It also provides ways for those interested in the site to communicate their concerns and questions to us.

If you feel the planned outreach activities and mechanisms found in this plan are insufficient or would like to modify them in some way, please contact us. We will work to find solutions. We can implement new activities or outreach tools right away, with or without amending this plan.

²¹ <https://apps.ecology.wa.gov/cleanupsearch/reports/cleanup/contaminated>

²² <https://ecology.wa.gov/MTCA-process>

²³ <https://app.leg.wa.gov/WAC/default.aspx?cite=197-11>

Appendices

Appendix A. Steps in the MTCA cleanup process

The cleanup process is defined in the Model Toxics Control Act (MTCA), Washington's cleanup law. See the accessible PDF for details.

Washington's Cleanup Process

Public participation plans and comment periods are only required for cleanups under a legal agreement with Ecology. Otherwise, all cleanups follow the same steps. The steps are defined by Washington's cleanup law, the Model Toxics Control Act.

