

APPENDIX C

Kent Wellhead Protection Program

Appendix C: Kent Wellhead Protection Program

Appendix C is a compilation of figures from the Kent Wellhead Protection Program with the Reserve Silica Reclamation Site added to the figures for reference. This appendix contains the following figures:

Figure C.1: Kent Wellhead Protection Areas

Figure C.2: Zoning and Public Sewer System Boundaries Map

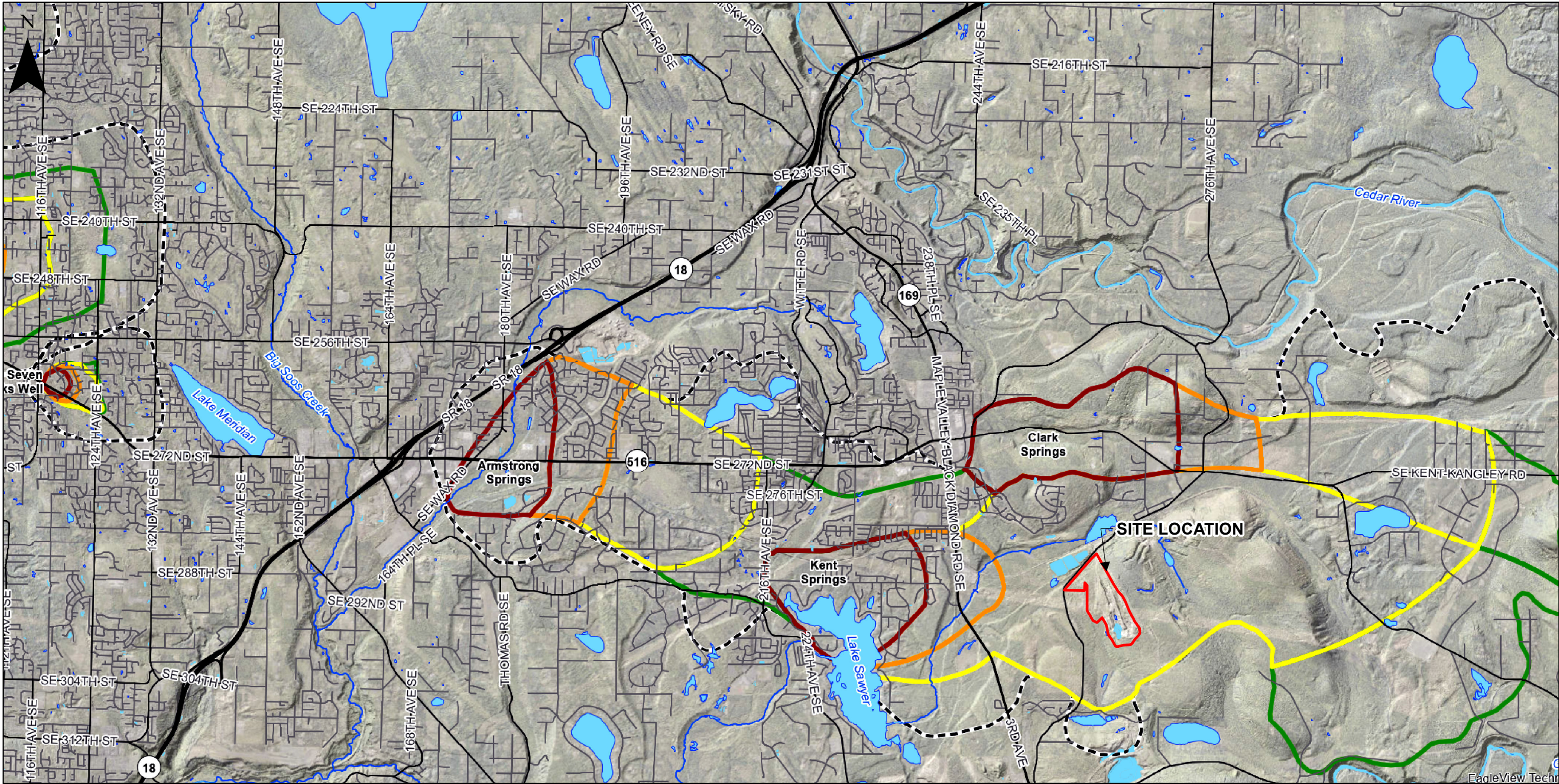
Figure C.3: Spring Source (Phase 1) WHPAS Hazard Ranking

Figure C.4: Surficial Geology and Cross Section Locations

Figure C.5: Groundwater Elevation Contour Map

Figure C.6: Modeled Capture Zones and Surface Water Divide Map

Figure C.7: Wellhead Protection Areas by Zone



LEGEND

Approximate Site Boundary

Modeled Capture Zones

6-month time of travel

1-year time of travel

5-year time of travel

10-year time of travel

WHPA Buffer/Surface Water Divide

NOTES

1. Original source: Pacific Groundwater Group. 2022. City of Kent Wellhead Protection Program Update, External Version.

2. "Site" refers to the Remedial Investigation Study Area that includes parcels 0121069011 (Lot 5), 3622069138 (Lot 6) and 3522069046 (Baja Property)

3. All locations are approximate

CLIENT
HOLCIM

PROJECT
REMEDIAL INVESTIGATION REPORT – RESERVE SILICA
RECLAMATION SITE

TITLE
KENT WELLHEAD PROTECTION AREAS

YYYY-MM-DD

2024-11-20

DESIGNED

PREPARED

HJ

REVIEWED

GL

APPROVED

GZ

PROJECT

GL152030402

PHASE

04

REV.

A

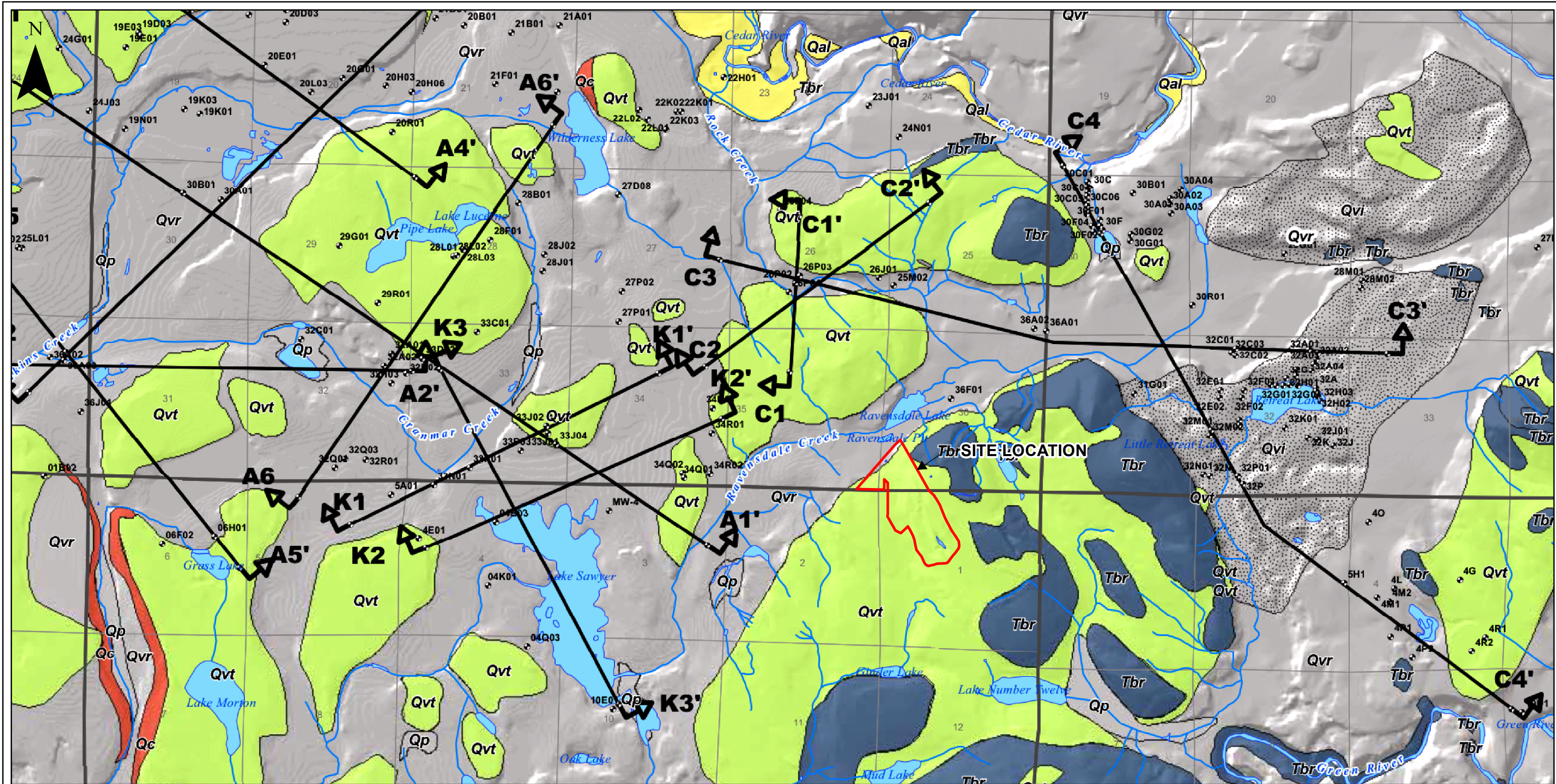
FIGURE

C.1

PATH: G:\HOLCIM\Remedial\08_PROJECTS\GL152030402\01_RI04_LBR02_PRODUCT\FIGURES\RI\AppendixC_1_152030402_004_RevA_WHPA.mxd PRINTED ON: 2024-11-20 AT: 10:53:08 AM

IF THIS MEASUREMENT DOES NOT MATCH WHAT IS SHOWN, THE SHEET SIZE HAS BEEN MODIFIED FROM: ANSI B

28mm



LEGEND

Approximate Site Boundary

(Qal) Recent Alluvium

(Qvr, Qp) Vashon Recessional Outwash

(Qvi) Vashon Ice - contact Deposits

(Qf) Older Fine - grained Deposits

(Qc) Older Coarse - grained Deposits

(Qvt) Vashon Till

(Tbr) Tertiary Volcanic and Sedimentary Rock

Wells with Logs used for Cross Section Development (from South King County GWMP Database)

Cross Section Location

NOTES

1. Original source: Pacific Groundwater Group. 2022. City of Kent Wellhead Protection Program Update, External Version.
2. "Site" refers to the Remedial Investigation Study Area that includes parcels 0121069011 (Lot 5), 3622069138 (Lot 6) and 3522069046 (Baja Property)
3. All locations are approximate

CLIENT
HOLCIM

PROJECT
REMEDIAL INVESTIGATION REPORT – RESERVE SILICA
RECLAMATION SITE

TITLE
SURFICIAL GEOLOGY AND
CROSS SECTION LOCATIONS

YYYY-MM-DD 2024-11-20

DESIGNED ---

PREPARED HJ

REVIEWED GL

APPROVED GZ

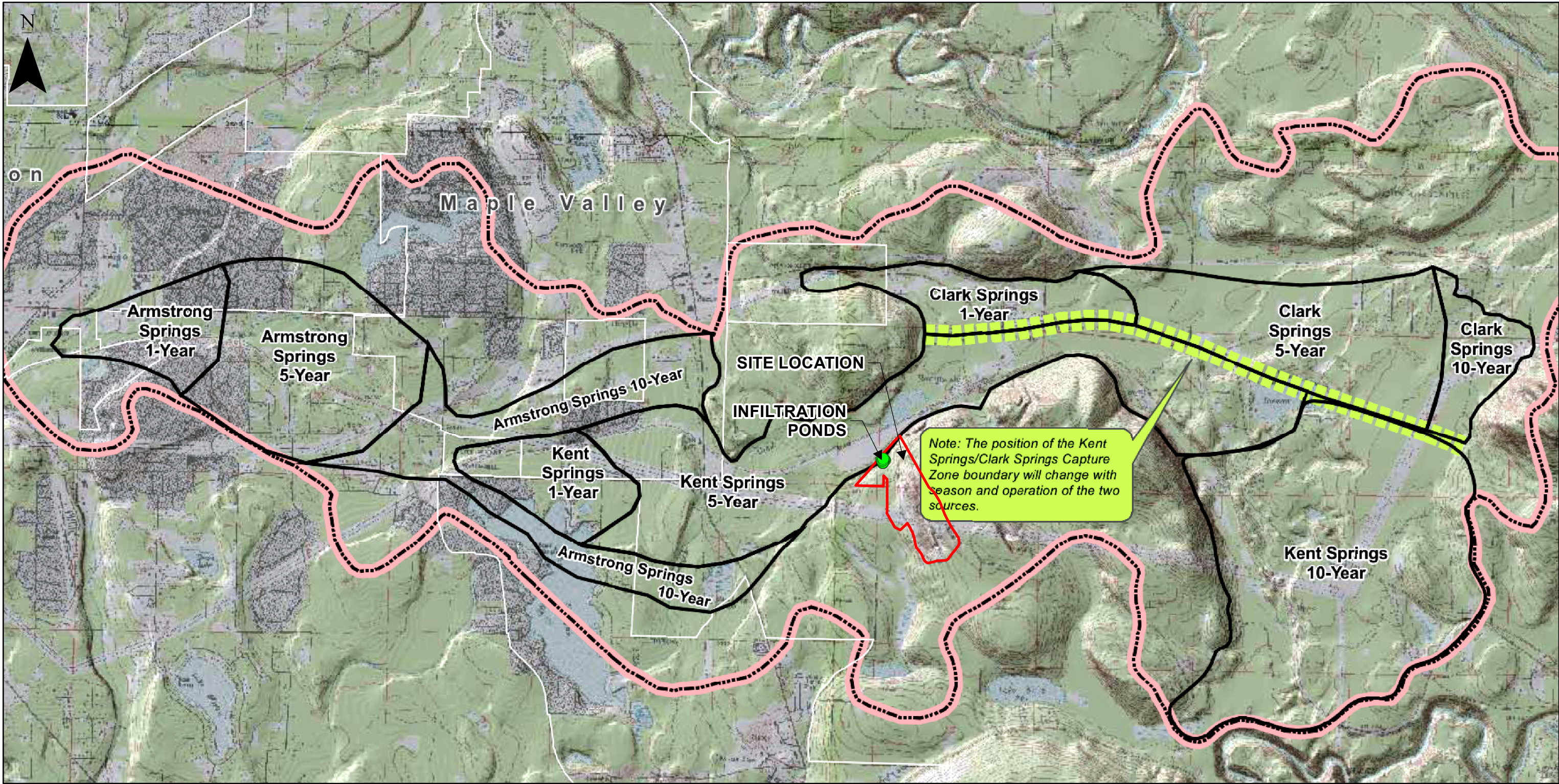
PROJECT
GL152030402

PHASE
04

REV.
A

FIGURE
C.4





- LEGEND**
- Approximate Site Boundary
 - Infiltration Ponds
 - Modeled 1-, 5-, and 10-year Capture Zones (reproduced from Hart Crowser, 1996)
 - Surface Water Divide


- NOTES**
1. Original source: Pacific Groundwater Group. 2022. City of Kent Wellhead Protection Program Update, External Version.
 2. "Site" refers to the Remedial Investigation Study Area that includes parcels 0121069011 (Lot 5), 3622069138 (Lot 6) and 3522069046 (Baja Property)
 3. All locations are approximate

CLIENT
HOLCIM

PROJECT
REMEDIAL INVESTIGATION REPORT – RESERVE SILICA
RECLAMATION SITE

TITLE
MODELED CAPTURE ZONES
AND SURFACE WATER DIVIDE MAP

YYYY-MM-DD	2024-11-20
DESIGNED	---
PREPARED	HJ
REVIEWED	GL
APPROVED	GZ



PROJECT
GL152030402

PHASE
04

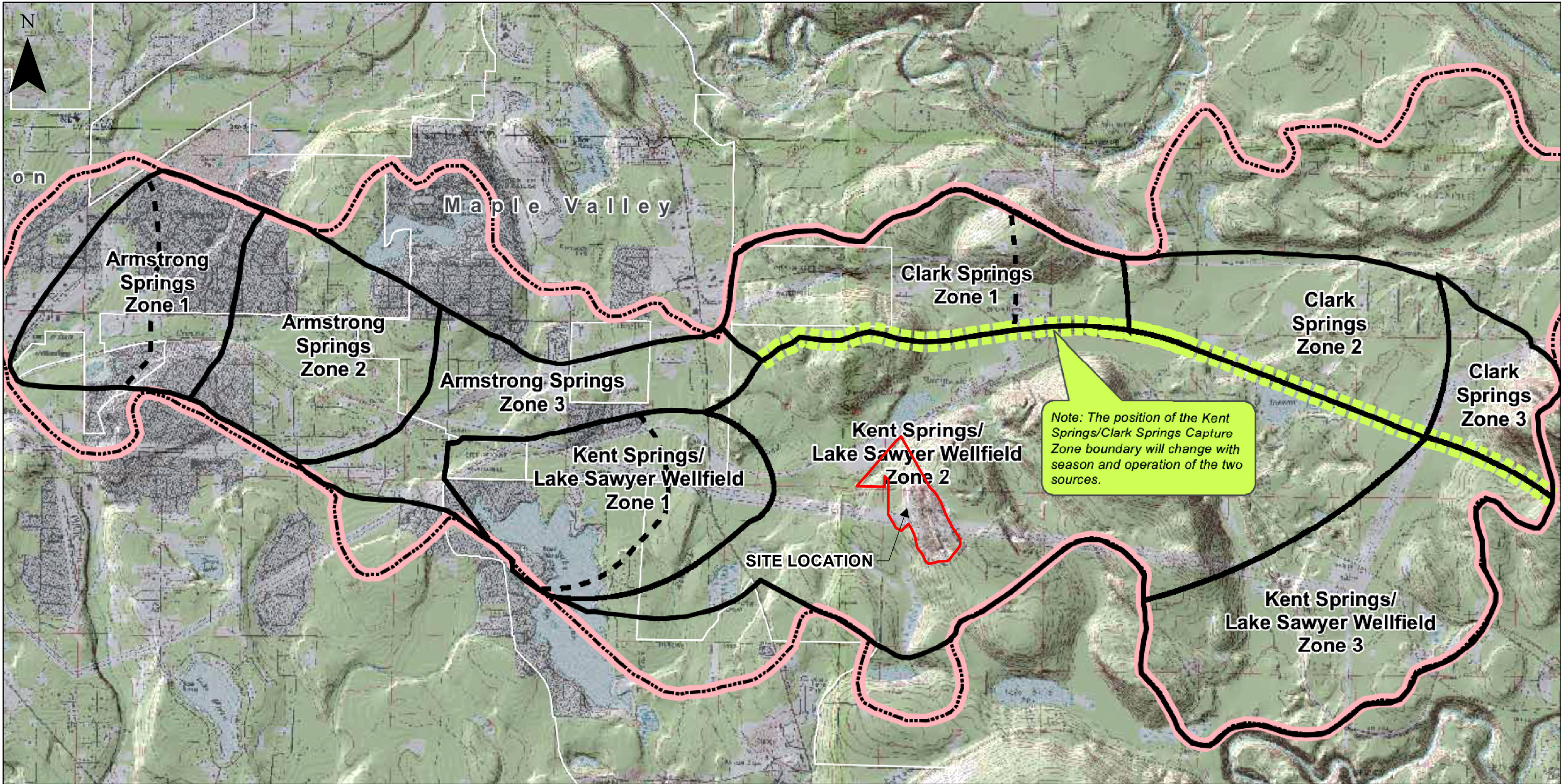
REV.
A

FIGURE
C.6

PATH: G:\HOLCIM\Remedial\08_PROJECTS\GL152030402\01_ R104_LBR03_PRODUCT\FIGURES\FIGURE\REV\01_ Appendix C_6_152030402_004_ RevA_CaptureZones.mxd PRINTED ON: 2024-11-20 AT 2:20:59 PM

IF THIS MEASUREMENT DOES NOT MATCH WHAT IS SHOWN, THE SHEET SIZE HAS BEEN MODIFIED FROM: ANSI B

28mm



LEGEND

Approximate Site Boundary

Wellhead protection areas (by zone)
(reproduced from Hart Crowser, 1996)

Zone 1: 1-year time of travel
Zone 2: 5-year time of travel
Zone 3: 10-year time of travel

Six-month time of travel boundary

Surface Water Divide

NOTES

1. Original source: Pacific Groundwater Group. 2022. City of Kent Wellhead Protection Program Update, External Version.

2. "Site" refers to the Remedial Investigation Study Area that includes parcels 0121069011 (Lot 5), 3622069138 (Lot 6) and 3522069046 (Baja Property)

3. All locations are approximate

CLIENT
HOLCIM

PROJECT
REMEDIAL INVESTIGATION REPORT – RESERVE SILICA
RECLAMATION SITE

TITLE
WELLHEAD PROTECTION AREAS
BY ZONE

YYYY-MM-DD

2024-11-20

DESIGNED

PREPARED

HJ

REVIEWED

GL

APPROVED

GZ

wsp

PROJECT

GL152030402

PHASE

04

REV.

A

FIGURE

C.7

PATH: G:\HOLCIM\Remedial\89_PROJECTS\GL152030402\01_RI04_LBR03_PRODUCT\FIGURES\FIGURE\REV\B Appendix C.7_152030402_004_RevA_VPAs.mxd PRINTED ON: 2024-11-20 AT: 2:21:28 PM

IF THIS MEASUREMENT DOES NOT MATCH WHAT IS SHOWN, THE SHEET SIZE HAS BEEN MODIFIED FROM: ANSI B 28mm