



Public Participation Plan: Boeing Kent Space Center

**20403 68th Ave S
Kent, Washington 98032**

Hazardous Waste and Toxics Reduction Program

Washington State Department of Ecology
Northwest Region Office
Shoreline, Washington

Publication 22-04-040 | Revised August 2025

Publication Information

This document is available at:

- ecology.wa.gov/BoeingKent
- apps.ecology.wa.gov/publications/SummaryPages/2204040.html

Cover photo

Photo courtesy of Boeing Kent Space Center.

Related Information

- Facility site ID: 2099
- Cleanup site ID: 12671

Contact Information

Washington State Department of Ecology

Hazardous Waste and Toxics Reduction Program

Northwest Region Office

P.O. Box 330316

Shoreline, WA 98133

Janelle Anderson

Community Outreach Specialist

Telephone: 425-301-6454

Email: janelle.anderson@ecy.wa.gov

Li Ma

Site Manager

Telephone 425-466-9872

Email: li.ma@ecy.wa.gov

Website: Washington State Department of Ecology¹

ADA Accessibility

The Department of Ecology is committed to providing people with disabilities access to our information and services by meeting or exceeding the requirements of state and federal laws.

To ask for an ADA accommodation, email hwtrpubs@ecy.wa.gov or call 360-407-6700. Or call Ecology through the Washington Telecommunication Relay for services, including text telephone (TTY), at 711 or through your preferred relay service provider. Visit ecology.wa.gov/ADA for more information.

¹ www.ecology.wa.gov/contact

Language Services

The Department of Ecology offers translation and interpretation services at no cost. For information in your preferred language, email janelle.anderson@ecy.wa.gov or call 425-301-6454. If you call, please ask for an interpreter and wait to be connected with one.

中文 (Chinese): 需要帮助或有疑问? 我们免费提供翻译和口译服务。如果您需要这些服务, 请发送电子邮件至 janelle.anderson@ecy.wa.gov 或致电 (425) 301-6454。如果您致电要求, 我们将为您联系口译员。

دري (Dari): برگزار می‌کند. ما خدمات ترجمه کتبی و شفاهی را به صورت رایگان عرضه می‌کنیم. برای درخواست این سند به دری یا برای معلومات بیشتر به زبان خودتان, لطفاً ایمیل بنزید janelle.anderson@ecy.wa.gov یا با 425-301-6454 تماس بگیرید. اگر تماس گرفتید, لطفاً درخواست یک ترجمان شفاهی کنید و منتظر بمانید تا با یک نفر وصل شوید.

한국어 (Korean): 도움이 필요하시거나 질문이 있으신가요? 저희는 무료로 번역 및 통역 서비스를 제공합니다. 이 서비스를 요청하려면, janelle.anderson@ecy.wa.gov 로 이메일을 보내시거나 (425) 301-6454 번으로 전화해 주세요. 전화하실 경우, 통역사 연결을 요청해 주세요.

Español (Spanish): ¿Necesita ayuda o tiene preguntas? Ofrecemos servicios de traducción e interpretación sin costo. Si necesita estos servicios, envíe un correo electrónico a janelle.anderson@ecy.wa.gov o llame al (425) 301-6454. Si llama, pida que le conecten con un intérprete.

Tagalog (Tagalog): Nag-aalok kami ng mga serbisyo ng pagsasalin at interpretasyon nang walang bayad. Para humiling ng kopya ng dokumentong ito sa Tagalog o para sa higit pang impormasyon, pakisuyong mag-email sa janelle.anderson@ecy.wa.gov o tumawag sa 425-301-6454. Kapag tumawag ka, humingi ng interpreter at maghintay na makakonekta sa isa.

Українська (Ukrainian): Потрібна допомога чи є запитання? Ми безкоштовно пропонуємо послуги письмового та усного перекладу. Якщо вам потрібні ці послуги, напишіть електронною поштою janelle.anderson@ecy.wa.gov або зателефонуйте (425) 301-6454. Якщо ви зателефонуєте, попросіть усного перекладача і дочекайтеся, доки вас з'єднають із ним.

Tiếng Việt (Vietnamese): Quý vị cần trợ giúp hoặc có thắc mắc? Chúng tôi cung cấp dịch vụ biên dịch và thông dịch miễn phí. Để yêu cầu các dịch vụ này, quý vị vui lòng gửi email đến janelle.anderson@ecy.wa.gov hoặc gọi (425) 301-6454. Nếu gọi điện, quý vị hãy yêu cầu kết nối với một thông dịch viên.

Public Participation Plan

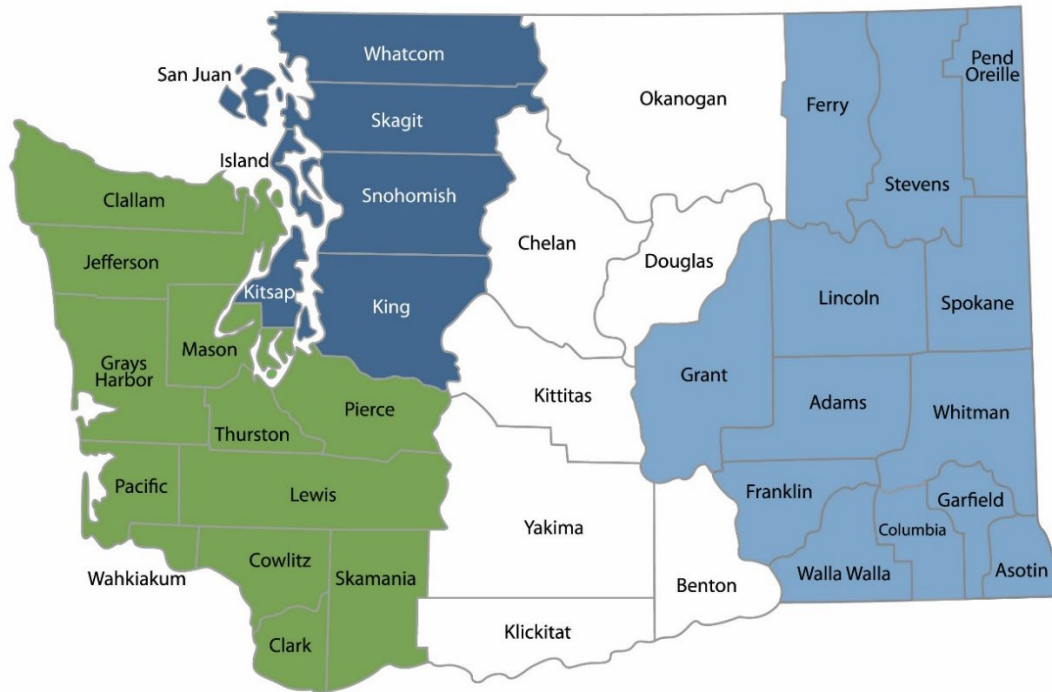
**Boeing Kent Space Center
20403 68th Ave S
Kent, WA, 98032**

Hazardous Waste & Toxics Reduction Program
Washington State Department of Ecology
Northwest Region Office
Shoreline, Washington

Publication 22-04-040 | Revised August 2025

Department of Ecology's Region Offices

Map of Counties Served



Southwest Region
360-407-6300

Northwest Region
206-594-0000

Central Region
509-575-2490

Eastern Region
509-329-3400

Region	Counties served	Mailing Address	Phone
Southwest	Clallam, Clark, Cowlitz, Grays Harbor, Jefferson, Mason, Lewis, Pacific, Pierce, Skamania, Thurston, Wahkiakum	PO Box 47775 Olympia, WA 98504	360-407-6300
Northwest	Island, King, Kitsap, San Juan, Skagit, Snohomish, Whatcom	PO Box 330316 Shoreline, WA 98133	206-594-0000
Central	Benton, Chelan, Douglas, Kittitas, Klickitat, Okanogan, Yakima	1250 W Alder St Union Gap, WA 98903	509-575-2490
Eastern	Adams, Asotin, Columbia, Ferry, Franklin, Garfield, Grant, Lincoln, Pend Oreille, Spokane, Stevens, Walla Walla, Whitman	4601 N Monroe Spokane, WA 99205	509-329-3400
Headquarters	Across Washington	PO Box 47600 Olympia, WA 98504	360-407-6000

Table of Contents

List of Figures	6
List of Tables	6
Public Involvement in Contamination Cleanup	7
Site contacts.....	7
Public Participation Activities	8
How we share information with the community	8
How you can share information with us	10
Public Participation Grants	11
State and Federal Cleanup Laws.....	11
Model Toxics Control Act.....	11
Resource Conservation and Recovery Act	12
State Environmental Policy Act.....	12
Site Information.....	14
Land use	14
Contamination	14
Cleanup process	17
Area Community	20
Environmental justice and Title VI	21
Tribal engagement	22
PPP Amendments	23
List of Abbreviations and Acronyms.....	24

List of Figures

Figure 1: Washington's formal cleanup process infographic.	13
Figure 2. Soil and groundwater sample locations at Boeing Kent Space Center.....	16
Figure 3: Formal cleanup process infographic (English). Read a plain text version.	17
Figure 4. Formal cleanup process infographic (Chinese). 华盛顿州的清理流程 (信息图).	17
Figure 5. Formal cleanup process infographic (Dari).....	18
Figure 6. Formal cleanup process infographic (Korean). 와싱턴주의 환경정화 절차.....	18
Figure 7. Formal cleanup process infographic (Spanish). Proceso de limpieza de Washington. .	18
Figure 8. Formal cleanup process infographic (Tagalog). Proseso ng Paglilinis sa Washington. .	19
Figure 9. Formal cleanup process infographic (Ukrainian).....	19
Figure 10. Formal cleanup process infographic (Vietnamese). Quy trình Tẩy nhiễm của Washington.	19
Figure 11. Google map of Kent, Washington.....	20
Figure 12. Google map of Boeing Kent Space Center in Kent, Washington.	21

List of Tables

Table 1. EPA's Environmental Justice Screen Standard Report (2020) for the study area of Kent, Washington (population 126,071.).....	22
Table 2. List of abbreviations and acronyms.	24

Public Involvement in Contamination Cleanup

The goal of this plan is to ensure meaningful community involvement throughout the environmental cleanup of the Boeing facility in Kent, Washington (the site). The Washington State Department of Ecology (Ecology, we) developed this Public Participation Plan in collaboration with Boeing, the party responsible for cleanup costs.

This plan outlines how we will keep the public informed about contamination investigations and cleanup options at each stage of the process. The plan also details when and how the community can participate in the cleanup process. We encourage the public to engage with the decision-making opportunities and provide input.

Site contacts

Questions and informal comments or information about the site's history are welcome anytime. To be included in the site record, comments about the cleanup process must be submitted during comment periods.

Ecology

Washington State Department of Ecology
Northwest Region Office
P.O. Box 330316
Shoreline, WA 98133

Li Ma
Site Manager
li.ma@ecy.wa.gov
425-466-9872

Janelle Anderson
Community Outreach Specialist
janelle.anderson@ecy.wa.gov
425-301-6454

Potentially Liable Party (PLP)

Conor Neal, Boeing Project Manager
Global Enterprise Sustainability
Remediation Group
P.O. Box 3707 MC 46-202
Seattle, WA 98124
Mobile: 206-877-3037
conor.neal@boeing.com

Public Participation Activities

Members of the public may ask questions, submit informal comments, or share site information at any time. Interested parties do not need to wait for a formal public comment period to contact Ecology.

However, to be included in the formal site record, comments about the site investigation, cleanup alternatives, or cleanups must be submitted during formal comment periods. In addition, the public is invited to review site documents before they become final. This is the most direct and influential way to learn more about the site and be involved in the cleanup's decision-making.

How we share information with the community

During specific stages of the cleanup, Ecology will mail notices about public comment periods to addresses surrounding the site. The mailing list area will vary depending on the type of contamination and where it's located. However, the list will at least include addresses within a quarter-mile radius of the site and other interested organizations and individuals. These notices will provide:

- General information about the site.
- Contact information for submitting comments.
- Times and locations of public meetings or hearings.
- How to request a public meeting if one is not yet scheduled.

Comment period notices will be available online and at document repositories (for example, at the public library closest to the site). Notices may also be posted in various locations throughout the community (for example, local businesses, schools, or post offices).

Ecology may also develop documents outside of comment periods to keep the community updated on the site's status. These documents will be available online. Print copies may be mailed to the nearby community if we feel the message warrants the associated cost.

Postal mailing list

Ecology maintains a mailing list that includes addresses near the site and relevant local, state, Tribal, and federal government contacts.

People on the mailing list receive public comment notices when draft documents are available.

We will add additional individuals, organizations, and other interested parties to the mailing list as requested. If you would like to be added to the mailing list for this site, please contact Janelle Anderson at 425-301-6454 or email janelle.anderson@ecy.wa.gov.

Contaminated Site Register

Public comment periods, events, and other cleanup notices are published in Ecology's [Contaminated Site Register](#).² To receive the *Contaminated Site Register* by email, please [subscribe online](#),³ or contact Sarah Kellington at sarah.kellington@ecy.wa.gov or 360-280-3167.

Newspaper display ads or legal notices

We announce public comment periods and events for this site in ads or notices published in [The Kent Reporter](#).⁴ We will also publish a notice on our [Public Input & Events Listing](#) webpage.⁵

Ecology's website and social media platforms

We maintain a website for the [Boeing Kent Space Center](#)⁶ site. The website provides site information, and you may download cleanup documents.

We may also share information about cleanup sites through [news releases, our blog, and social media](#).⁷

Email lists

Ecology has an email list to update interested people about Transfer, Storage, and Disposal facilities in the state, including this site. If you would like to be added to that email list, please contact:

Janelle Anderson, Community Outreach & Environmental Education Specialist

Telephone: 425-301-6454

Email: janelle.anderson@ecy.wa.gov

Automatic site updates

You can subscribe to this site from our [site webpage](#).⁸ Just click on the dark blue "subscribe to this site" button. You'll receive an email if we change the site's status, add documents to the site's webpage, or open a comment period.

² <https://ecology.wa.gov/Regulations-Permits/Guidance-technical-assistance/Site-Register-lists-and-data>

³ https://public.govdelivery.com/accounts/WAECY/subscriber/new?topic_id=WAECY_118

⁴ <https://www.kentreporter.com/>

⁵ <https://ecology.wa.gov/Events/Search/Listing>

⁶ <https://ecology.wa.gov/BoeingKent>

⁷ <https://ecology.wa.gov/about-us/who-we-are/news>

⁸ <https://ecology.wa.gov/BoeingKent>

Places to see printed documents

During public comment periods, you can find printed documents at the following locations:

Kent Library | King County Library System

212 2nd Avenue N

Kent, WA 98032

Telephone: 253-859-3330

Website: kcls.org/locations/kent

No appointment is necessary.

Washington State Department of Ecology

Northwest Region Office

15700 Dayton Ave N.

Shoreline, WA 98133-9716

Telephone: 206-594-0000

To schedule an appointment, contact:

Michael Hart

Email: michael.hart@ecy.wa.gov

You can also review documents on our website: ecology.wa.gov/BoeingKent

Signs around the cleanup site

We may also install signs displaying information about project status, traffic impacts, and health risks around the cleanup site.

How you can share information with us

We hold public comment periods and sometimes public events to learn your thoughts, opinions, and concerns about cleanup at a site. We may also identify public concerns and cleanup goals by meeting with and soliciting information from interested community members and organizations. To collaborate with us about this site, please contact Janelle Anderson, Community Outreach & Environmental Education Specialist, at 425-301-6454 or janelle.anderson@ecy.wa.gov.

Public comment periods

At a minimum, the Model Toxics Control Act ([MTCA](#)) requires 30-day comment periods to allow interested members of the public to comment on draft documents, legal agreements, and proposed cleanup actions. If there is significant interest, Ecology may extend the public comment period. We hold 45-day comment periods when we are issuing or renewing corrective action permits.

When Ecology oversees State Environmental Policy Act ([SEPA](#)) determinations, we hold comment periods for at least two weeks and may extend them to 30 days or more when other cleanup documents are concurrently available for review.

Following a comment period, we publish all the input we received and respond to significant comments and questions. If the comments result in significant changes to the cleanup documents, then the documents will be revised and re-issued for public review. If the comments do not result in significant changes, the documents will become final.

Public events

We hold public meetings, workshops, open houses, and hearings based on community interest. At meetings, workshops, and open houses, attendees can ask questions, learn more about the site, and submit written comments when a comment period is open. At a public hearing, verbal comments are transcribed for the record, and Ecology responds to them after the comment period in our response to comments publication.

If we have not scheduled an event, we will hold one if 10 or more people request it. This may cause us to extend a public comment period, so the event occurs during it.

Events are held at locations close to the site that meet Americans with Disabilities Act standards. Public events are always announced in advance using a variety of methods.

Public Participation Grants

Grants may be available to neighborhood committees, non-profits, and other groups interested in the site. For contaminated sites, these funds can be used to:

- Hire an expert to help interpret technical information.
- Conduct activities that enhance the public's understanding of, and participation in, the cleanup process.

For more information about public participation grants, please contact Laura Busby at 360-280-5088 or laura.busby@ecy.wa.gov or Jill Krumlauf at 360-790-5771 or jill.krumlauf@ecy.wa.gov. You may also visit the [Public Participation Grant webpage](#).⁹

State and Federal Cleanup Laws

In Washington State, we use MTCA and other regulations for cleanup activities on properties that are treated, stored, or disposed of hazardous wastes. These cleanups, called **corrective actions**, are required under the federal Resource Conservation and Recovery Act (RCRA). The U.S. Environmental Protection Agency (EPA) sets and enforces environmental standards in the United States. EPA allows Ecology to use MTCA, not RCRA, for cleanups in Washington State.

This PPP is required under MTCA. MTCA sets standards to ensure contaminated site cleanups in our state protect human health and the environment.

Model Toxics Control Act

MTCA began as a grassroots citizens' initiative in 1988. We started using it in our state to clean up contaminated sites in 1989. Under MTCA, a current or past property owner or operator may need to pay to clean up contamination until levels are safe for human health and the environment. The contamination may be on their property or coming from their property.

⁹ <https://ecology.wa.gov/about-us/payments-contracts-grants/grants-loans/find-a-grant-or-loan/public-participation-grants>

Under MTCA, we oversee cleanups and issue [regulations and guidance](#)¹⁰ for them. We look into reports of property contamination. If the contamination is a threat to human health or the environment, the property is put on the Hazardous Sites List, and the cleanup process begins.

Public participation is an important part of the MTCA process. Participation needs are determined for each cleanup site by the level of public interest and the risk posed by the contamination. People who live near the site, community groups, businesses, government entities, and other interested parties can comment on the cleanup process.

Under MTCA, the [cleanup process](#)¹¹ happens in phases. Many of the phases have time for the public to review and comment on cleanup documents. See Washington's Formal Cleanup Process (below) for more information.

Resource Conservation and Recovery Act

There are federal and state rules about hazardous wastes. Congress passed RCRA in 1976 to ensure safe management and disposal of hazardous waste. RCRA was updated several times to expand its scope and requirements.

RCRA's goals are to:

- Protect human health and the environment.
- Reduce waste and conserve energy and natural resources.
- Reduce or stop hazardous waste generation.

Treatment, storage, and disposal (TSD) facilities must have a permit to design, operate, maintain, or close their site. RCRA also requires facilities to clean up contamination from past and present practices. These cleanup activities are called **corrective actions**.

Federal RCRA and state dangerous waste regulations require opportunities for public participation during the stages of facility permitting and cleanup.

State Environmental Policy Act

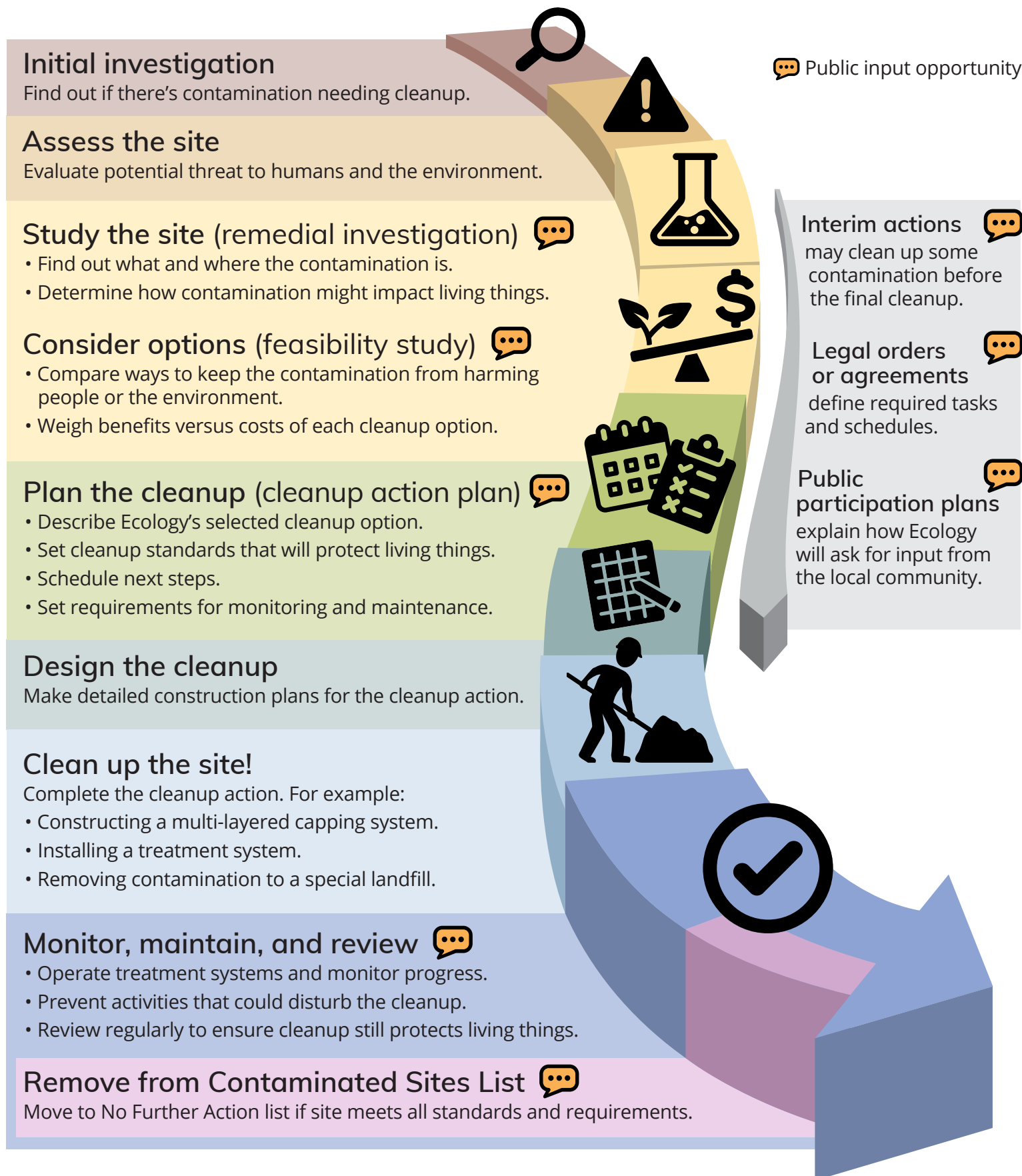
Ecology follows the State Environmental Policy Act (SEPA) during review and development of cleanup plans. We use SEPA during site cleanups to find and evaluate negative environmental impacts that could result from a proposed action.

¹⁰ <https://apps.ecology.wa.gov/publications/publications/9406.pdf>

¹¹ <https://ecology.wa.gov/MTCA-process>

Washington's Cleanup Process

Public participation plans and comment periods are only required for cleanups under a legal agreement with Ecology. Otherwise, all cleanups follow the same steps. The steps are defined by Washington's cleanup law, the Model Toxics Control Act.



Site Information

Land use

Boeing Kent Space Center is located at 20403 68th Ave S. in Kent, Washington. Boeing conducts research and development at this facility, primarily for the Department of Defense. Other aerospace operations also occur here. Activities include:

- Electronic and electrical component manufacturing.
- Metal milling.
- Finishing and plating.
- Photographic processing.
- Other research and development in various laboratories.

Boeing has operated at this location since the 1960s. Facility activities allowed chemicals to spill or leak and contaminate soil and groundwater.

Boeing previously stored hazardous waste longer than 90 days at this site under a RCRA interim status permit, 40 CFR Part 265. Boeing decided not to seek final permit status. As a result, they can only store hazardous waste for up to 90 days. Even though they did not seek final permit status, Boeing must keep their permit active until they cleanup the site.

In 2016, Ecology and Boeing signed an Agreed Order that requires Boeing to conduct a Remedial Investigation (RI). We approved the RI work plan later that year.

Contamination

Contaminants detected in groundwater, soils, soil gas, stormwater, and/or surface water sediments at Boeing Kent Space Center include:

- Volatile organic compounds (VOCs), such as benzene and vinyl chloride (these solvents cause cancer).
- Petroleum hydrocarbons (the main parts of gasoline and oil).
- Semi-volatile organic compounds (SVOCs), including polycyclic aromatic hydrocarbons (or PAHs). These chemicals are formed when gasoline and trash are burned. They are suspected to cause cancer.
- PCBs (polychlorinated biphenyls), long-lasting chemicals formerly used in many industries. Health effects can include cancer and immune system damage. Read more about PCBs on the [EPA website](https://www.epa.gov/pcbs).¹³

¹³ <https://www.epa.gov/pcbs>

- Toxic metals such as arsenic. Arsenic is naturally occurring and is mobilized by some forms of contamination. Arsenic is poisonous and regulated in public drinking water.

Contamination at this site is relatively low, and most contaminants are below levels that pose a risk to human health or the environment. “Risk-based screening levels” are used to make sure that contamination that is a risk to human health or the environment is identified. On parts of this site, one contaminant, arsenic, has concentrations above the risk-based screening levels.

At this time, people are not being exposed to harmful levels of contamination. This is because groundwater at the site is not used for drinking water and Boeing controls access to their property. If contamination threatening human health or the environment is found, we will have Boeing take protective action.

Sampling results from the remedial investigation are contained in the 2022 Revised Boeing Kent Space RI Report. This report can be found on [Ecology's Boeing Kent Space Center website](https://ecology.wa.gov/BoeingKent)¹⁴ in the Documents section under Technical Reports. The locations that were investigated in 2017 and 2018 can be seen on the sampling site map in Figure 2.

¹⁴ <https://ecology.wa.gov/BoeingKent>

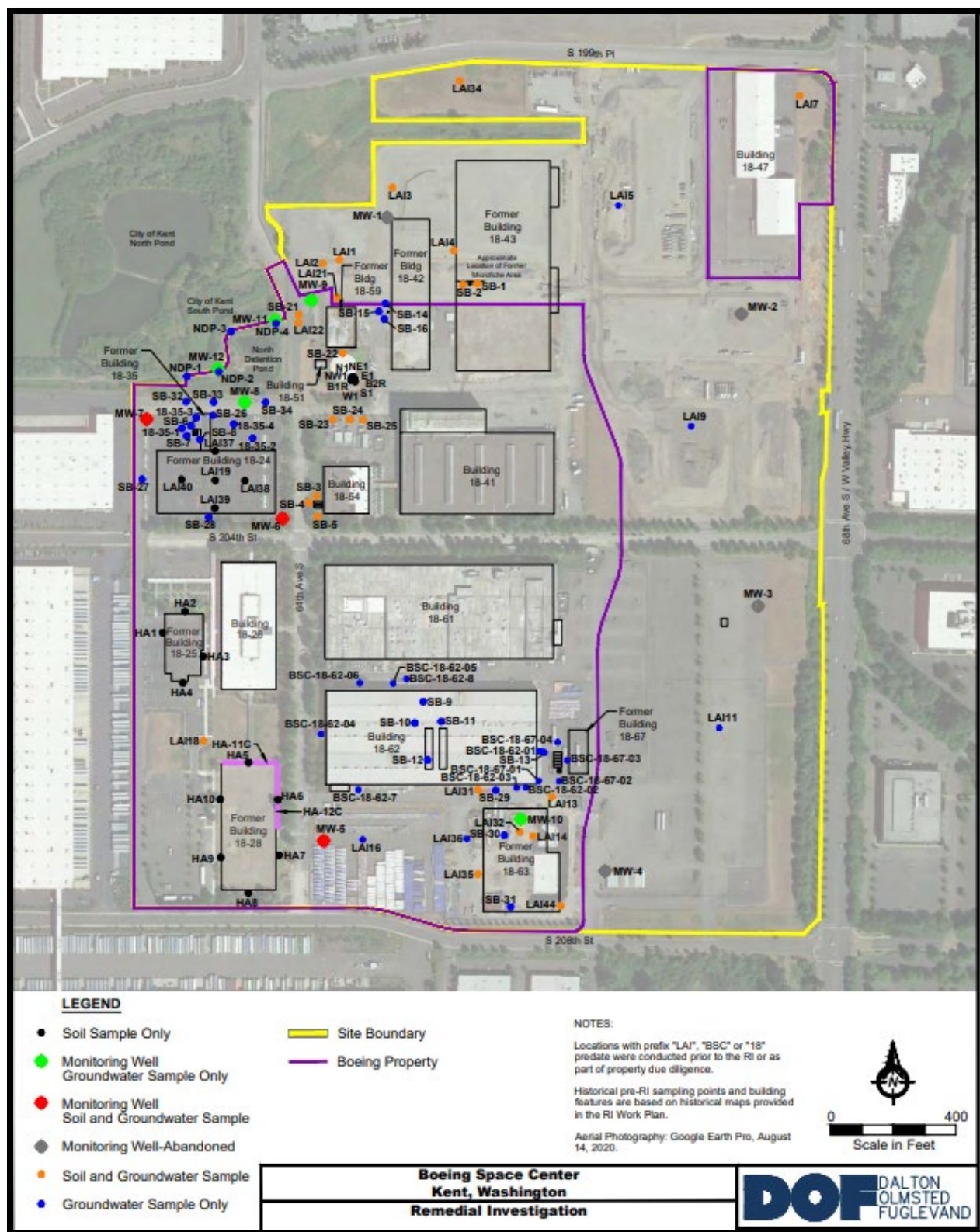


Figure 2. Soil and groundwater sample locations at Boeing Kent Space Center.

Cleanup process

Boeing must clean up the contamination at its Kent facility. There are six phases in the cleanup process: remedial investigation, feasibility study, cleanup plan, cleanup design, cleanup implementation, and monitoring and site use controls.

Interim actions or partial cleanups can occur at any time. There will be opportunities for public comment at each stage, except for cleanup implementation.

We apply both the Resource Conservation and Recovery Act (RCRA) and the Model Toxics Control Act (MTCA) regulations to clean up hazardous waste sites. The cleanup protects human health and the environment from dangerous waste and chemicals.

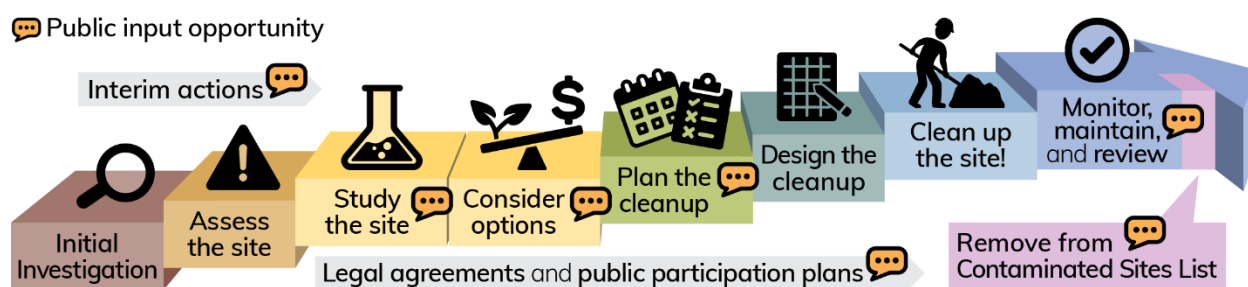


Figure 3: Formal cleanup process infographic (English). [Read a plain text version.](#)¹⁵



Figure 4. Formal cleanup process infographic (Chinese). [华盛顿州的清理流程 \(信息图\).](#)¹⁶

¹⁵ <https://apps.ecology.wa.gov/publications/SummaryPages/1909166.html>

¹⁶ <https://apps.ecology.wa.gov/publications/SummaryPages/1909166ZH.html>



Figure 5. Formal cleanup process infographic (Dari).



Figure 6. Formal cleanup process infographic (Korean). [와싱턴주의 환경정화 절차](#).¹⁷



Figure 7. Formal cleanup process infographic (Spanish). [Proceso de limpieza de Washington](#).¹⁸

¹⁷ <https://apps.ecology.wa.gov/publications/SummaryPages/1909166KO.html>

¹⁸ <https://apps.ecology.wa.gov/publications/SummaryPages/1909166ES.html>



Figure 8. Formal cleanup process infographic (Tagalog). [Proseso ng Paglilinis sa Washington](#).¹⁹



Figure 9. Formal cleanup process infographic (Ukrainian).



Figure 10. Formal cleanup process infographic (Vietnamese). [Quy trình Tẩy nhiễm của Washington](#).²⁰

¹⁹ <https://apps.ecology.wa.gov/publications/SummaryPages/1909166TL.html>

²⁰ <https://apps.ecology.wa.gov/publications/SummaryPages/1909166VI.html>

Area Community

Kent

Kent is located in King County, Washington, United States. It is the sixth largest city in the state and second oldest incorporated city after Seattle. Kent is in the heart of the Seattle–Tacoma metropolitan area, located 19 miles south of Seattle and 19 miles northeast of Tacoma (see Figure 11).

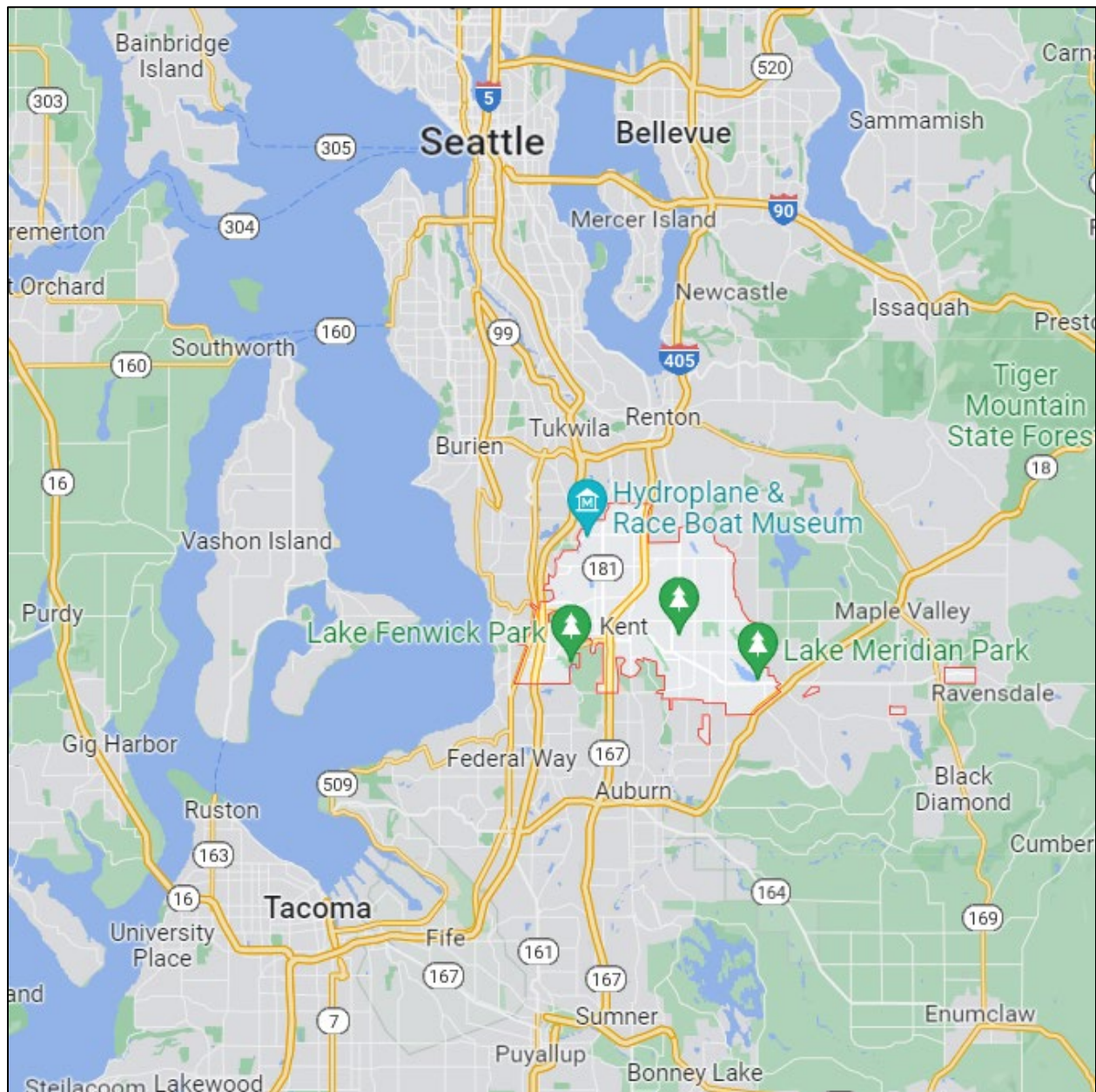


Figure 11. Google map of Kent, Washington.

Boeing Kent Space Center is located about three miles east of Interstate 5, and three miles north of downtown Kent, Washington (see Figure 12).

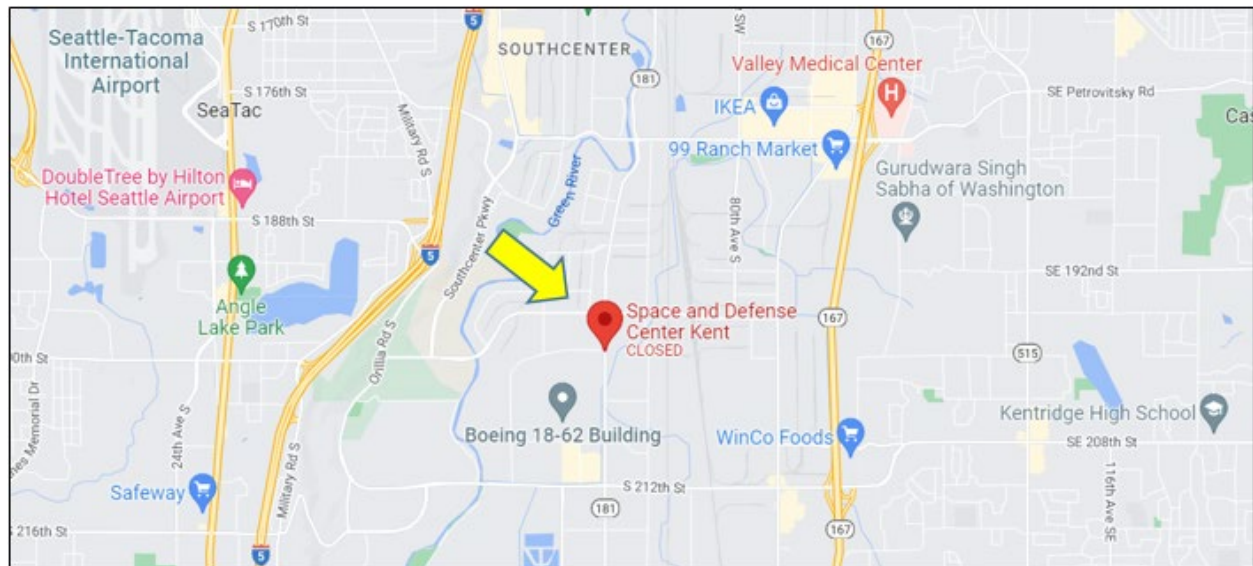


Figure 12. Google map of Boeing Kent Space Center in Kent, Washington.

Environmental justice and Title VI

Environmental justice promotes fair treatment of all people under environmental laws and policies, regardless of their race, color, national origin, or income.

In Washington (and across the United States), more people of color and/or low-income people live and work near industrial facilities, contaminated sites, and in neighborhoods without easy access to fresh food, green spaces, or clean air and water. These conditions negatively and unfairly affect their health and safety.

Environmental justice strategies and compliance with Title VI of the Civil Rights Act are key to addressing these inequities—especially through public involvement. We make every effort to inform and involve all people. To do this, we use demographic information to design our messaging to fit the community.

Demographics

Table 1. EPA's Environmental Justice Screen Standard Report (2020) for the study area of Kent, Washington (population 126,071.)

Demographic Indicators	Value	State Average	Percentile in State
Demographic Index	44%	29%	81
Minority Population	54%	30%	86
Low Income Population	33%	28%	65
Linguistically Isolated Population	9%	4%	85
Population with Less Than High School Education	15%	9%	80
Population Under 5 Years of Age	7%	6%	60
Population Over 64 Years of Age	11%	14%	37

People of color and minority population

Ecology ran a demographic analysis using EPA's Environmental Justice Screen tool in 2020 for the city of Kent. The standard report suggests several indicators for environmental justice considerations, including:

- Minority populations.
- Linguistically isolated populations.
- Populations with less than a high school education.

Census data from the 2013–2017 American Community Survey indicate the largest racial and ethnic populations are Asian (24,736), Hispanic (19,929), and Black or African American (13,739).

English language proficiency

Based on language data from the U.S. Census (2015) for Kent, the population includes several non-English language groups who speak English less than very well and make up more than 5% of the population (or total of more than 1,000 people). The top three non-English language groups include Spanish (6,879/5.97%), Vietnamese (1,855/1.6%), and Chinese (1,399/1.2%). In addition, we will also offer translations in Korean, Dari, Ukrainian, and Tagalog because these are languages widely used in the public schools in Kent.

We strive to make our public participation efforts as inclusive as possible and welcome your input about how to best reach the nearby community.

Tribal engagement

Potentially contaminated resources near this site are relied on by the federally recognized Muckleshoot Tribe, Puyallup Tribe, Snoqualmie Tribe, Stillaguamish Tribe, Suquamish Tribe, and Tulalip Tribe that reside in King County. We will invite these Tribes to engage in decision-making during the process on a government-to-government basis.

We will reach out to Tribes to offer opportunities to engage in the cleanup process that are separate from the public involvement process. This engagement is described in a site-specific Tribal Engagement Plan, as required by [WAC 173-340-620](#).²¹ We invite Tribal members and other indigenous peoples to engage in the public involvement process as well.

PPP Amendments

Ecology developed this PPP following MTCA regulations ([WAC 173-340-600](#)²²). We review it as the cleanup progresses and amend it as necessary. You may suggest amendments to Janelle Anderson by phone at 425-301-6454 or email Janelle.anderson@ecy.wa.gov.

This PPP includes information for the public regarding opportunities for public involvement and comments. The planned outreach activities will keep the public informed and provide ways for people to communicate their concerns and questions.

If you feel the planned outreach activities are insufficient or need changes, we welcome your feedback. Different outreach activities or outreach tools can be used right away, with or without updating this plan.

²¹ [WAC 173-340-620](#): <https://app.leg.wa.gov/wac/default.aspx?cite=173-340-620>

²² <https://app.leg.wa.gov/wac/default.aspx?cite=173-340-600>

List of Abbreviations and Acronyms

Table 2. List of abbreviations and acronyms.

Abbreviation or Acronym	Definition
ADA	Americans with Disabilities Act
Ecology	Washington State Department of Ecology
EPA	US Environmental Protection Agency
MTCA	Model Toxics Control Act
PAHs	Polycyclic aromatic hydrocarbons
PCBs	Polychlorinated biphenyls
PPP, Plan	Public participation plan
RCRA	Resource Conservation and Recovery Act
SEPA	State Environmental Policy Act
Site	Area where hazardous substances at the facility are currently located
SVOCs	Semi-volatile organic compounds
TSD	Treatment, storage, and disposal facility
VOCs	Volatile organic compounds
WAC	Washington Administrative Code