

# Pend Oreille Mine Site

## Tailings Disposal Facilities TDF-1 and TDF-2



## Agreed Order for a Remedial Investigation/Feasibility Study

### Metals in Soil, Surface Water and Groundwater to be Studied

The Washington State Department of Ecology proposes to enter into a legal agreement called an Agreed Order with Teck Cominco American Incorporated (Teck Cominco). The Order requires Teck Cominco to conduct a Remedial Investigation and Feasibility Study (RI/FS) at Tailings Disposal Facilities 1 and 2 which are associated with the Pend Oreille Mine and Mill. The site is located two miles north of Metaline Falls on the east side of the Pend Oreille River in Pend Oreille County, Washington (see Figures 1 & 2).

The purpose of the Remedial Investigation is to gather data to determine the extent of metals contamination at Tailings Disposal Facilities 1 and 2. The contaminants of concern include site-related lead, zinc, cadmium, arsenic and potentially other metals in soils, groundwater and surface water. The Feasibility Study will identify and evaluate cleanup options.

### Public Invited to Comment

Comments on the Agreed Order for a Remedial Investigation/Feasibility Study will be accepted **May 25 through June 23, 2005.**

The box at the right provides information about where to review documents and submit comments.

### Site Background

The mine has historical roots of operation dating from as early as 1904 to the present. Early mining began on the west side of the Pend Oreille River. Mining on the east side of the river, at the current site, took place from 1952 until closure of the mine in 1977. Various owners operated the facility until 1996 when Cominco American Incorporated acquired it. In 2001, Cominco American Incorporated changed its name to Teck Cominco American Incorporated and reopened the mine in 2004 for production. Teck Cominco American Incorporated remains the current owner and operator.

### Purpose of Mining

The purpose of mining at the site is to remove ore-bearing rock from the underground mine and process it in facilities above ground. Zinc and lead are the primary metals recovered in the mining process and sold for economic benefit.

**May 2005**

### Comments Accepted

*May 25 through June 23, 2005*

### Document Review Locations

*WA Department of Ecology*  
Eastern Regional Office  
4601 North Monroe  
Spokane, WA 99205-1295  
Mrs. Johnnie Landis  
509-329-3415

### *Metaline Falls Public Library*

Cutter Theatre Building  
302 Park Street  
Metaline Falls, WA 99153  
509-446-3232

### *Ecology's Toxics Cleanup Website*

*[http://www.ecy.wa.gov/programs/tcp/sites/Pend\\_Or\\_Mine/POM\\_hp.html](http://www.ecy.wa.gov/programs/tcp/sites/Pend_Or_Mine/POM_hp.html)*

### Comments/Technical Questions

#### *Mr. William Fees, P.E.*

Ecology Toxics Cleanup Program  
4601 N. Monroe  
Spokane, WA 99205-1295  
509-329-3589 or 1-800-826-7716  
E-mail: [wfee461@ecy.wa.gov](mailto:wfee461@ecy.wa.gov)

### Meetings/Hearings/Mailings

#### *Ms. Carol Bergin*

Ecology Toxics Cleanup Program  
1-800-826-7716 or 509-329-3546  
E-mail: [cabe461@ecy.wa.gov](mailto:cabe461@ecy.wa.gov)

## Tailings Disposal Facilities

During ore processing and metal extraction a fine material is produced called tailings. Historically, tailings were discharged directly into the Pend Oreille River until 1967. Since 1967 three areas have been used to store mine tailings at the site. These storage areas are called Tailings Disposal Facilities (TDF) 1, 2 and 3 (see Figures 1 & 2).

TDF-1 and 2 cover approximately 49 acres and are located northwest of the Pend Oreille Mine Golf Course and east of the Pend Oreille River. Both TDF-1

and 2 are located on Pend Oreille Mine property owned by Teck Cominco American Incorporated and are no longer active. TDF-3 is about 20 acres in size and is currently covered by a new facility where tailings are stored.

TDF 1 and 2 are the focus of the RI/FS. TDF-3 will be addressed in the future when the mine is closed.

## What Happens Next

Ecology will review the comments submitted about the Agreed Order for the RI/FS

and provide a written response called a Responsiveness Summary. The summary will be sent to those who commented and will also be available in the locations listed in the box on page one. If applicable, modifications will be made to the Agreed Order. After the RI/FS is completed, a report containing the findings will be made available to the public for comment. The report is expected by the end of 2005.

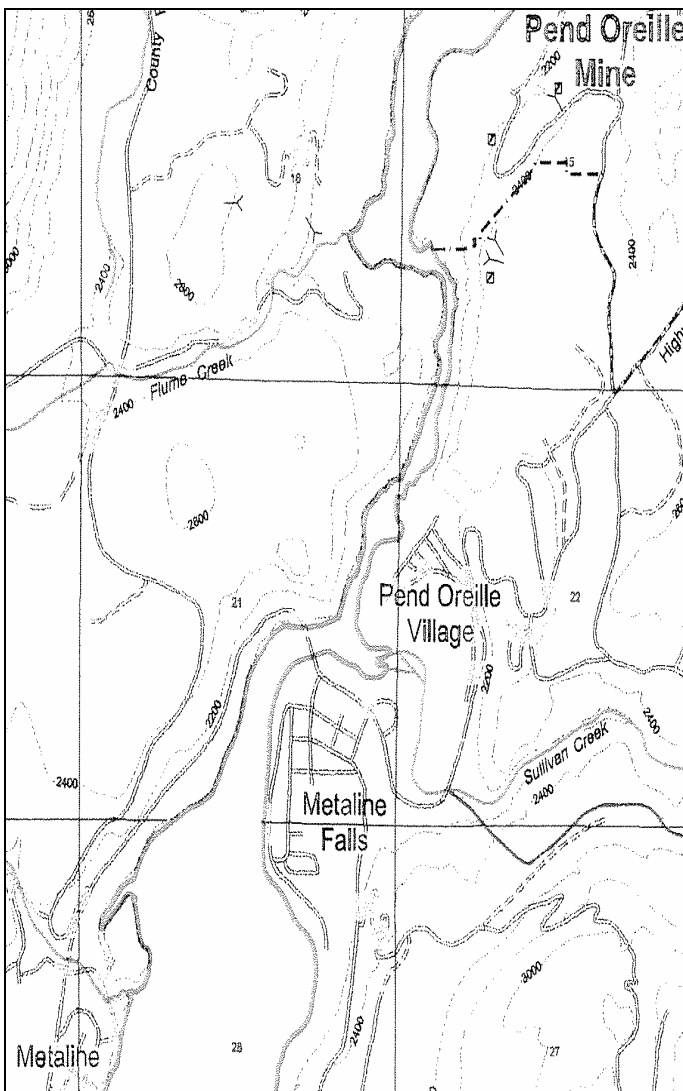


Figure 1  
General Site Location Map

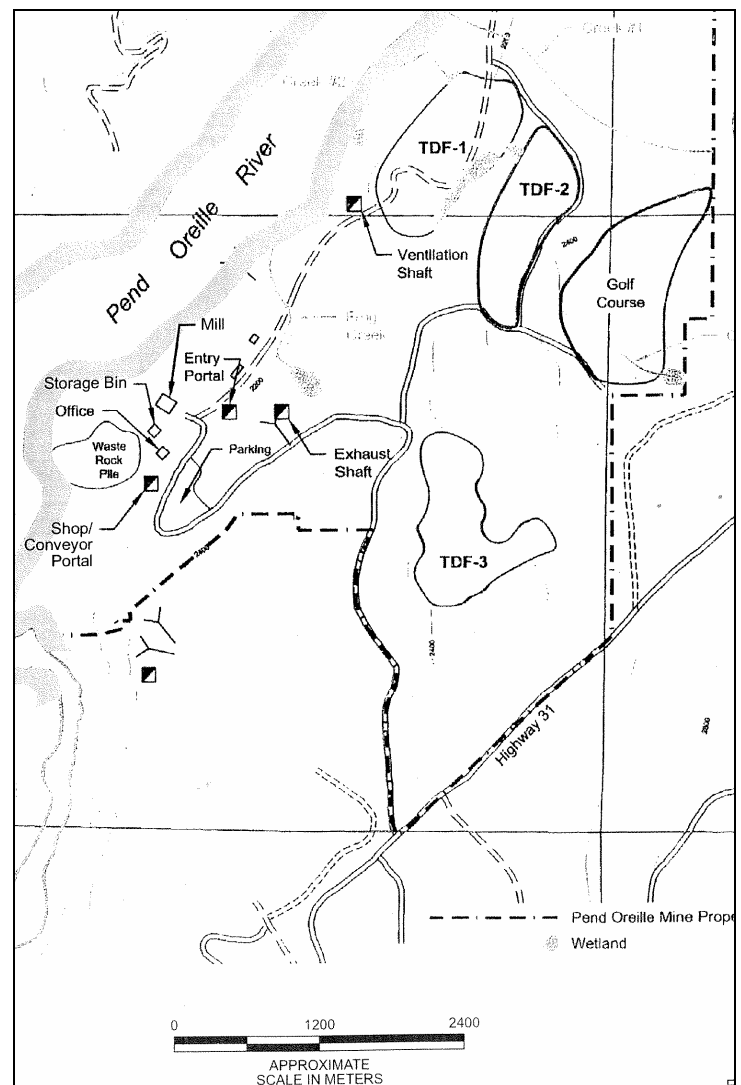


Figure 2  
Facility Location Map