



## **Public Participation Plan: West of 4th—Georgetown**

### **Potentially liable parties:**

Art Brass Plating, Inc. — 5516 3rd Ave. S.  
Blaser Die Casting, Co. — 5700 3rd Ave. S.  
Capital Industries, Inc. — 5800 3rd Ave. S.  
Clean Earth/Burlington — 734 South Lucile St.

Seattle, Washington 98108

### **Hazardous Waste and Toxics Reduction Program**

Washington State Department of Ecology  
Northwest Region Office  
Shoreline, Washington

**Publication 23-04-037 | Revised September 2025**

## Publication Information

This plan is available on Ecology's website:

- <https://apps.ecology.wa.gov/publications/SummaryPages/2304037.html>

### Cover photo

Photo by Washington State Department of Ecology.

### Related Information

- Facility site ID: 47779679
- Cleanup site ID: 12260

## Contact Information

### Washington State Department of Ecology

Hazardous Waste and Toxics Reduction Program  
Northwest Region Office  
P.O. Box 330316  
Shoreline, WA 98133

**Website:** [Washington State Department of Ecology](https://www.ecology.wa.gov)<sup>1</sup>

#### Janelle Anderson

Community Outreach Specialist  
Pronouns: she/her  
Phone: 425-301-6454  
Email: [janelle.anderson@ecy.wa.gov](mailto:janelle.anderson@ecy.wa.gov)

#### Erin Hobbs

Site Manager  
Pronouns: she/her  
Phone: 425-515-5996  
Email: [erin.hobbs@ecy.wa.gov](mailto:erin.hobbs@ecy.wa.gov)

## ADA Accessibility

The Department of Ecology is committed to providing people with disabilities access to information and services by meeting or exceeding the requirements of state and federal laws.

To request an ADA accommodation, email [hwtrpubs@ecy.wa.gov](mailto:hwtrpubs@ecy.wa.gov) or call 360-407-6700. Or call Ecology through the Washington Telecommunication Relay for services, including text telephone (TTY), at 711 or through your preferred relay service provider. Visit [ecology.wa.gov/ADA](https://ecology.wa.gov/ADA) for more information.

---

<sup>1</sup> [www.ecology.wa.gov/contact](https://www.ecology.wa.gov/contact)

## Translations Available

The Department of Ecology offers translation and interpretation services at no cost. For information in your preferred language, email [janelle.anderson@ecy.wa.gov](mailto:janelle.anderson@ecy.wa.gov) or call 425-301-6454. If you call, please ask for an interpreter.

### 中文 (Chinese)

需要帮助或有疑问？我们免费提供翻译和口译服务。如果您需要这些服务，请发送电子邮件至 [janelle.anderson@ecy.wa.gov](mailto:janelle.anderson@ecy.wa.gov) 或致电 (425) 301-6454。如果您致电要求，我们将为您联系口译员。

### Español (Spanish)

¿Necesita ayuda o tiene preguntas? Ofrecemos servicios de traducción e interpretación sin costo. Si necesita estos servicios, envíe un correo electrónico a [janelle.anderson@ecy.wa.gov](mailto:janelle.anderson@ecy.wa.gov) o llame al (425) 301-6454. Si llama, pida que le conecten con un intérprete.

### ខ្មែរ (Khmer)

Department of Ecology (ក្រសួងអេកូឡូស៊ី) ប្តេជ្ញាចិត្តផ្តល់សេវាបកប្រែភាសា រួមទាំងសេវាបកប្រែអត្ថបទ និងផ្ទាល់មាត់ សម្រាប់មនុស្សដែលមានភាសាកំណើតមិនមែនជាភាសាអង់គ្លេស។ ដើម្បីស្នើសុំសេវាកម្មទាំងនេះ សូមផ្ញើអ៊ីមែលមក [janelle.anderson@ecy.wa.gov](mailto:janelle.anderson@ecy.wa.gov) ឬហៅទូរសព្ទទៅលេខ 425-301-6454។ ប្រសិនបើអ្នកទូរសព្ទមក សូមស្នើសុំអ្នកបកប្រែផ្ទាល់មាត់។

### Tiếng Việt (Vietnamese)

Quý vị cần trợ giúp hoặc có thắc mắc? Chúng tôi cung cấp dịch vụ biên dịch và thông dịch miễn phí. Để yêu cầu các dịch vụ này, quý vị vui lòng gửi email đến [janelle.anderson@ecy.wa.gov](mailto:janelle.anderson@ecy.wa.gov) hoặc gọi (425) 301-6454. Nếu gọi điện, quý vị hãy yêu cầu kết nối với một thông dịch viên.

# Public Participation Plan

---

## West of 4th – Georgetown

**Art Brass Plating, Inc. — 5516 3rd Ave. S.  
Blaser Die Casting, Co. — 5700 3rd Ave. S.  
Capital Industries, Inc. — 5800 3rd Ave. S.  
Clean Earth/Burlington — 734 South Lucile Street**

Hazardous Waste & Toxics Reduction Program  
Washington State Department of Ecology  
Northwest Region Office  
Shoreline, Washington

**Revised September 2025 | Publication 23-04-037**



DEPARTMENT OF  
**ECOLOGY**  
State of Washington

## Table of Contents

|  |           |
|--|-----------|
| <b>List of Figures .....</b>                             | <b>6</b>  |
| <b>List of Tables .....</b>                              | <b>6</b>  |
| <b>Public Involvement in Contamination Cleanup .....</b> | <b>7</b>  |
| Site contacts.....                                       | 7         |
| Public Participation Grants .....                        | 8         |
| <b>State and Federal Cleanup Laws.....</b>               | <b>9</b>  |
| Model Toxics Control Act.....                            | 9         |
| Resource Conservation and Recovery Act (RCRA) .....      | 11        |
| State Environmental Policy Act (SEPA) .....              | 11        |
| <b>Site Information .....</b>                            | <b>11</b> |
| Site background and land use.....                        | 11        |
| Cleanup process .....                                    | 15        |
| Environmental Justice and Title VI.....                  | 17        |
| <b>Public Participation Activities .....</b>             | <b>20</b> |
| How we share information with the community .....        | 20        |
| How to share information with us .....                   | 22        |
| Americans with Disabilities Act.....                     | 23        |
| <b>Plan Amendments .....</b>                             | <b>23</b> |
| <b>List of Abbreviations and Acronyms.....</b>           | <b>24</b> |

## List of Figures

|  |    |
|--|----|
| Figure 1. Washington’s Formal Cleanup Process.....   | 10 |
| Figure 2: Location of the West of 4th site in the Georgetown neighborhood of Seattle. .... | 12 |
| Figure 3: West of 4th site map.....  | 13 |
| Figure 4: Formal cleanup process (English) .....   | 15 |
| Figure 5. Formal cleanup process (Chinese). ....   | 16 |
| Figure 6: Formal cleanup process (Spanish). ....   | 16 |
| Figure 7: Formal cleanup process (Khmer). ....   | 16 |
| Figure 8. Formal cleanup process (Vietnamese).....   | 16 |
| Figure 9: Environmental justice demographic screening boundaries around West of 4th. ....  | 18 |

## List of Tables

|  |    |
|--|----|
| Table 1. Study of the people living within 3.14 square miles around the site ..... | 17 |
| Table 2. List of abbreviations and acronyms. ....                                  | 24 |

## Public Involvement in Contamination Cleanup

Ecology (we) developed this Public Participation Plan (PPP) in cooperation with the four potentially liable parties at the West of 4<sup>th</sup> site. This plan is for four facilities:

- Art Brass Plating, Inc., at 5516 3rd Ave. S., Seattle, WA, 98108.
- Blaser Die Casting, Co., at 5700 3rd Ave. S., Seattle, WA, 98108.
- Capital Industries, Inc., at 5800 3rd Ave. S., Seattle, WA, 98108.
- Clean Earth/Burlington, at 734 South Lucile Street, Seattle, WA, 98108.

The PPP describes how we involve the public in investigating contamination and selecting cleanup activities during the corrective action process.

We encourage the public to:

- Learn about and get involved in decision-making opportunities.
- Provide input during the investigation and cleanup of contamination.

This plan is for corrective action (cleanup). Public participation activities are coordinated between the four liable parties and Ecology. We must make sure the cleanup and the outreach comply with Washington State's Dangerous Waste Regulations and Model Toxics Control Act (MTCA) requirements. We will hold public comment periods and other public outreach during the cleanup process.

### Site contacts

Questions and informal comments or information about the site's history are welcome anytime. To be included in the site record, comments about the cleanup process must be submitted during formal comment periods.

### Ecology

#### Washington State Department of Ecology

Northwest Region Office

P.O. Box 330316

Shoreline, WA 98133

Erin Hobbs, Site Manager

Email: [erin.hobbs@ecy.wa.gov](mailto:erin.hobbs@ecy.wa.gov)

Telephone: 425-515-5996

Janelle Anderson, Community Outreach Specialist

Email: [janelle.anderson@ecy.wa.gov](mailto:janelle.anderson@ecy.wa.gov)

Telephone: 425-301-6454

## Potentially Liable Parties (PLPs)

### Art Brass Plating

Jeremy Porter, Aspect Consulting  
710 2nd Avenue, Suite 550  
Seattle, WA 98104

Email: [jporter@aspectconsulting.com](mailto:jporter@aspectconsulting.com)

Telephone: 206-838-5835

### Blaser Die Casting

Janet Knox, Mott MacDonald  
c/o Blaser Die Casting Co.  
P.O. Box 80286  
Seattle, WA 98108-0286

Email: [Janet.Knox@mottmac.com](mailto:Janet.Knox@mottmac.com)

Telephone: 206-329-1893

### Capital Industries

Jeff Kaspar, Farallon Consulting, L.L.C.  
13555 SE 36th Street  
Bellevue, WA 98006

Email: [jkaspar@farallonconsulting.com](mailto:jkaspar@farallonconsulting.com)

Telephone: 425-295-0800

### Clean Earth/Burlington

Laura Dell'Olio, Clean Earth Environmental  
Solutions, Inc.  
20245 77th Ave Avenue S.  
Kent, WA 98032

Email: [ladellolio@cleaneearthinc.com](mailto:ladellolio@cleaneearthinc.com)

Telephone: 856-283-9089

## Public Participation Grants

Grants may be available to neighborhood committees, nonprofits, and other groups. For contaminated sites, these funds can be used to:

- Hire an expert to help interpret technical information.<sup>2</sup>
- Conduct activities to increase understanding and participation in the cleanup process.

For more information about public participation grants, please contact one of the following:

Laura Busby, Grant Manager  
Email: [laura.busby@ecy.wa.gov](mailto:laura.busby@ecy.wa.gov)  
Telephone: 360-280-5088

Jill Krumlauf, Grant Manager  
Email: [jill.krumlauf@ecy.wa.gov](mailto:jill.krumlauf@ecy.wa.gov)  
Telephone: 360-790-577

You may also visit the [Public Participation Grant webpage](http://www.ecology.wa.gov/ppgrants).<sup>3</sup>

<sup>2</sup> Ecology currently does not have a citizen technical advisor for providing technical assistance to citizens on issues related to the investigation and cleanup of the site.

<sup>3</sup> [www.ecology.wa.gov/ppgrants](http://www.ecology.wa.gov/ppgrants)



## State and Federal Cleanup Laws

In Washington state, we use MTCA and other regulations for cleanup activities on properties that treated, stored, or disposed of hazardous wastes. These cleanups, called **corrective actions**, are required under the federal Resource Conservation and Recovery Act (RCRA). The U.S. Environmental Protection Agency (EPA) sets and enforces environmental standards in the United States. EPA allows Ecology to use MTCA, not RCRA, for cleanups in Washington State.

This PPP is required under MTCA. MTCA sets standards to ensure contaminated site cleanups in our state protect human health and the environment.

### Model Toxics Control Act

MTCA began as a grassroots citizens' initiative in 1988. We started using it in our state to clean up contaminated sites in 1989. Under MTCA, a current or past property owner or operator may need to pay to clean up contamination until levels are safe for human health and the environment. The contamination may be on their property or coming from their property.

Under MTCA, we oversee cleanups and issue [regulations and guidance](#)<sup>4</sup> for them. We investigate reports of property contamination. If the contamination is a threat to human health or the environment, the property is put on the Hazardous Sites List and the cleanup process begins.

Public participation is an important part of the MTCA process. Participation needs are determined for each cleanup site by the level of public interest and the risk posed by the contamination. People who live near the site, community groups, businesses, government entities, and other interested parties can comment on the cleanup process.

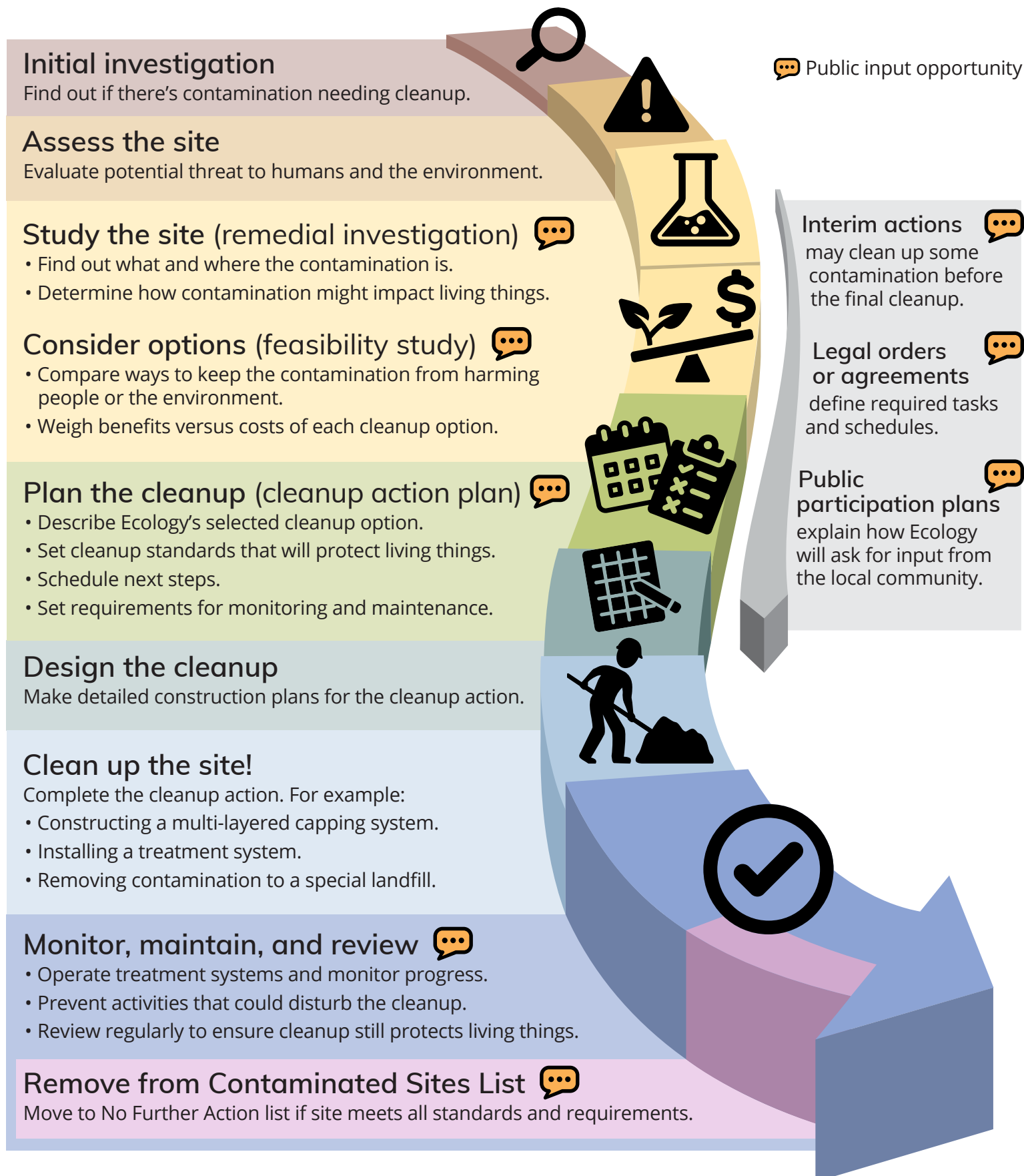
Under MTCA, the cleanup process happens in phases. Many of the phases have time for the public to review and comment on cleanup documents. See Washington's Formal Cleanup Process, below, for more information.

---

<sup>4</sup> [apps.ecology.wa.gov/publications/SummaryPages/9406.html](https://apps.ecology.wa.gov/publications/SummaryPages/9406.html)

# Washington's Cleanup Process

Public participation plans and comment periods are only required for cleanups under a legal agreement with Ecology. Otherwise, all cleanups follow the same steps. The steps are defined by Washington's cleanup law, the Model Toxics Control Act.



## Resource Conservation and Recovery Act (RCRA)

There are federal and state rules about hazardous wastes. Congress passed RCRA in 1976 to ensure safe management and disposal of hazardous waste. RCRA was updated several times to expand its scope and requirements.

RCRA's goals are:

- Protect human health and the environment.
- Reduce waste and conserve energy and natural resources.
- Reduce or stop hazardous waste generation.

Treatment, storage, and disposal (TSD) facilities must have a permit to design, operate, maintain, or close their site. RCRA also requires facilities to clean up contamination from past and present practices. These cleanup activities are called **corrective actions**.

Federal RCRA and state dangerous waste regulations require opportunities for public participation during the stages of facility permitting and cleanup.

At this time, the only facility at the West of 4th site subject to RCRA permitting is the Clean Earth/ Burlington facility. The permit at this facility is for corrective action only.

## State Environmental Policy Act (SEPA)

Ecology and the potentially liable party (PLP) follow SEPA during review and development of cleanup plans. Ecology uses SEPA during site cleanups to find and evaluate negative environmental impacts that could result from a proposed action.

## Site Information

### Site background and land use

Georgetown is a neighborhood just south of downtown Seattle. It has many residences and small businesses, despite being surrounded by industry and major transportation corridors. This industrial neighborhood boasts fun places to eat, art galleries, and urban breweries.

Notable Georgetown landmarks include the Burlington Northern Santa Fe (BNSF) Railway and Union Pacific Railroad to the north, the Duwamish River to the west, Interstate 5 (I-5) to the east, and Boeing Field to the south. Nearby neighborhoods include South Park to the west and Beacon Hill to the east.

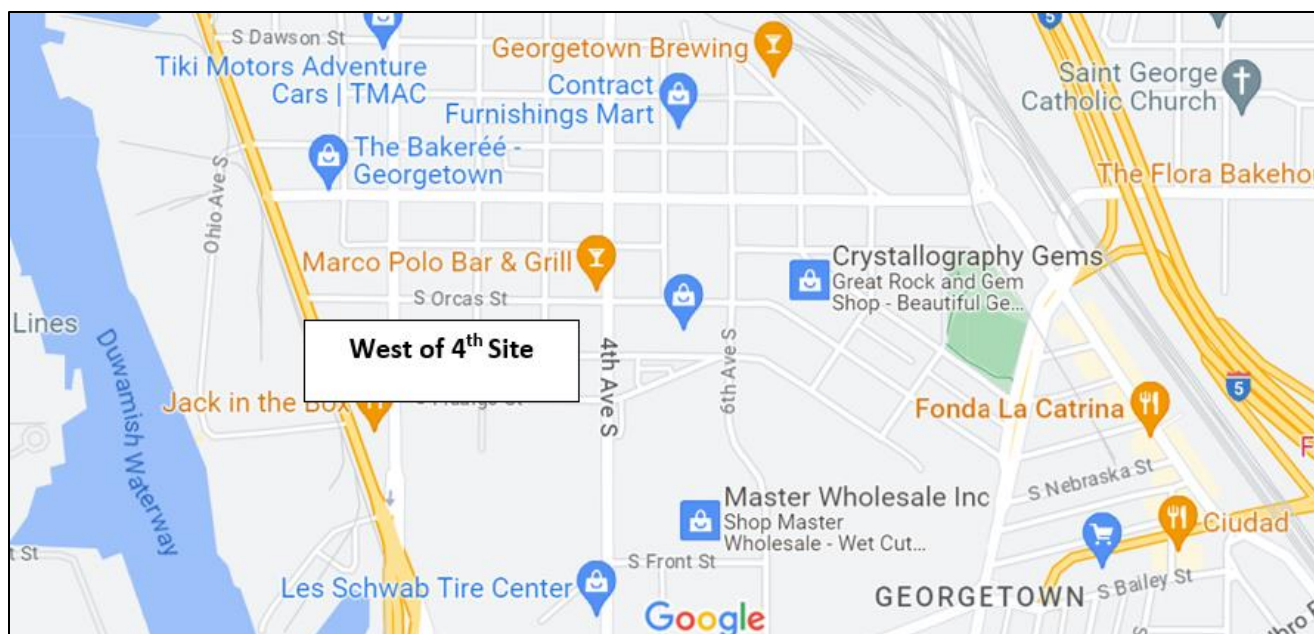


Figure 2: Location of the West of 4th site in the Georgetown neighborhood of Seattle.

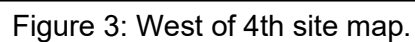
West of 4th is in the Georgetown neighborhood, between 4th Avenue South and the Lower Duwamish Waterway. This environmental cleanup is for co-mingled soil and groundwater contamination from four businesses (the potentially liable parties). These businesses are:

- Art Brass Plating, Inc.: 5516 3rd Ave. S., Seattle, WA, 98108.
- Blaser Die Casting, Co.: 5700 3rd Ave. S., Seattle, WA, 98108.
- Capital Industries, Inc.: 5800 3rd Ave. S., Seattle, WA, 98108.
- Clean Earth/Burlington: 734 South Lucile Street, Seattle, WA, 98108.<sup>5</sup>

“West of 4th” is the cleanup site created by the co-mingled contamination from these four businesses.

<sup>5</sup> Burlington Environmental, LLC and PSC (Phillips Services Corporation) Environmental Services, LLC are wholly owned subsidiaries of Clean Earth Environmental Solutions, Inc. (Clean Earth). Clean Earth/Burlington is a nationwide hazardous waste treatment, storage, and disposal company. Hazardous waste spills and leaks at the Georgetown location resulted in soil and groundwater contamination. We refer to Clean Earth/Burlington in this document because the company uses the name Clean Earth in public, but the facility was permitted in 1991 as Burlington Environmental, LLC. PSC closed the operating portion of its Georgetown facility effective December 2003. Clean Earth is currently conducting cleanup action activities at its Georgetown facility and east of 4th Avenue South under a separate RCRA permit for corrective action only.





In 2014, we issued an agreed order that requires all four of these businesses to identify a cleanup alternative to address site contamination.

For the feasibility study (FS), the site was divided into two site units:

- Site Unit 1 (SU1): Art Brass Plating and Burlington Environmental.
- Site Unit 2 (SU2): Blaser Die Casting, Capital Industries, and Burlington Environmental.

In 2016, the West of 4th FS reports for SU1 and SU2 were submitted and approved by Ecology. Interim actions were implemented, including:

- Source area cleanups at each business.
- Two pilot studies in SU1 to evaluate whether remedial technologies identified in the FS were effective at this site.

After the pilot studies, the potential remedies were re-evaluated in two focused FS addenda – one for SU1 and one for SU2.

In 2023, the FS was available for public comment. After it was approved, we selected the preferred cleanup actions for the site. The cleanup actions are described in the cleanup action plan.

## Contamination

Soil and groundwater are contaminated at the West of 4th site. Groundwater contamination from the four neighboring businesses has co-mingled in some areas. Soil contamination was primarily limited to Art Brass, Blaser, and Capital properties, which accounts for a relatively small area within the site.

Remedial investigations were conducted at the four individual facilities. According to these investigations, contamination includes:

- Chlorinated solvents—chemicals that may cause cancer, including:
  - PCE (perchloroethylene)
  - TCE (trichloroethylene)
  - DCE (dichloroethane or ethylene dichloride)
  - VC (vinyl chloride)
- Metals—chemicals toxic to surface water organisms:
  - Arsenic
  - Copper
  - Manganese
  - Nickel
  - Zinc

## Cleanup process

The four businesses developed a draft cleanup action plan to clean up the contaminated soil and groundwater. This cleanup plan will be implemented under a new consent decree.

You can download the following documents for West of 4th at [ecology.wa.gov/WestOf4th](https://ecology.wa.gov/WestOf4th):

- Dangerous waste management permit.
- Remedial investigation reports.
- Feasibility studies and associated addenda.
- Agreed orders and associated addenda.
- Cleanup action plan.
- Consent decree.

Ecology uses the remedial investigation and FS to select cleanup actions for a site. We oversee site cleanup activities, which must meet all federal and state standards.

The four potentially liable parties must clean up the contamination at the West of 4th site. There are six phases in the cleanup process: remedial investigation, feasibility study, cleanup plan, cleanup design, cleanup implementation, and monitoring and site use controls.

Interim actions or partial cleanups can occur at any time. There have been opportunities for public comment on all prior phases of the cleanup process. This public comment period represents an opportunity to provide comments on the cleanup action before cleanup begins.

We apply both the Resource Conservation and Recovery Act (RCRA) and the Model Toxics Control Act (MTCA) regulations to clean up hazardous waste sites. The cleanup protects human health and the environment from dangerous wastes and chemicals.

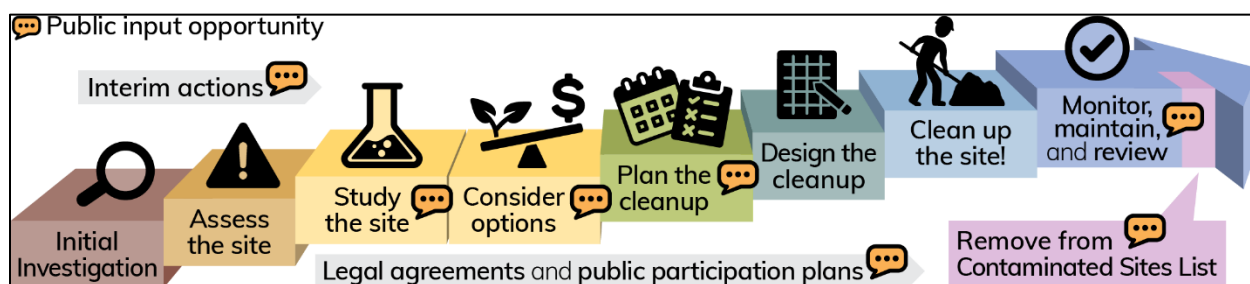


Figure 4: Formal cleanup process (English). [Read a plain text version](#).<sup>6</sup>

<sup>6</sup> [apps.ecology.wa.gov/publications/SummaryPages/1909166.html](https://apps.ecology.wa.gov/publications/SummaryPages/1909166.html)





Figure 5. Formal cleanup process ([Chinese](#)).



Figure 6: Formal cleanup process ([Spanish](#)).



Figure 7: Formal cleanup process ([Khmer](#)).

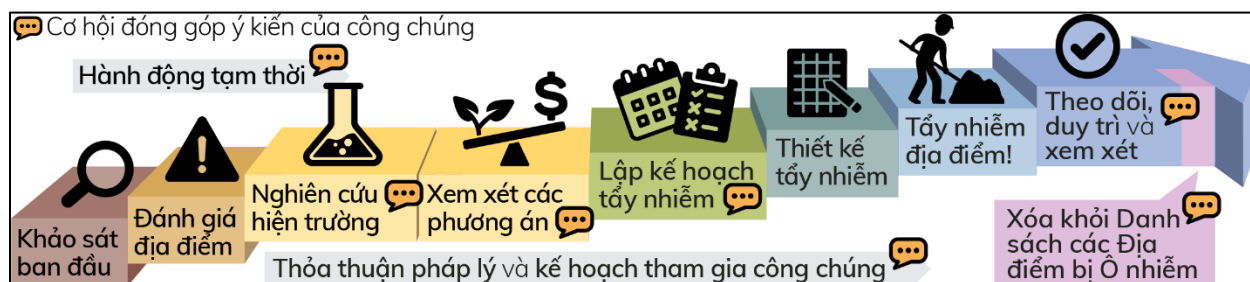


Figure 8. Formal cleanup process ([Vietnamese](#)).



## Environmental Justice and Title VI

Environmental justice promotes fair treatment of all people under environmental laws and policies, regardless of their race, color, national origin, or income.

In Washington (and across the United States), more people of color and/or low-income people live and work near industrial facilities, contaminated sites, and in neighborhoods without easy access to fresh food, green spaces, or clean air and water. These conditions negatively and unfairly affect their health and safety.

Environmental justice strategies and compliance with Title VI of the Civil Rights Act are key to addressing these inequities—especially through public involvement. We make every effort to inform and involve all people. To do this, we use demographic information to design our messaging to fit the community.

### Demographics

Table 1 displays the demographic indicators for the area around West of 4th, including the people of color, low-income, and limited English-speaking populations.<sup>7</sup>

Table 1. Study of the people living within 3.14 square miles around the site (pop. 7,543).

| Socioeconomic Indicators                        | Value (%) | State Average (%) | Percentile in State |
|---|-----------|-------------------|---------------------|
| Demographic Index                               | 43        | 28                | 82                  |
| Supplemental Demographic Index                  | 13        | 12                | 62                  |
| People of Color Population                      | 68        | 33                | 92                  |
| Low-Income Population                           | 17        | 24                | 40                  |
| Unemployment Rate                               | 4         | 5                 | 57                  |
| Limited English Speaking                        | 12        | 4                 | 89                  |
| Population with Less Than High School Education | 13        | 8                 | 79                  |
| Population Under 5 Years of Age                 | 4         | 6                 | 38                  |
| Population Over 64 Years of Age                 | 16        | 15                | 57                  |
| Low Life Expectancy                             | 16        | 18                | 21                  |

<sup>7</sup> Data obtained with EPA's EJSCREEN mapping tool on 1/10/2025 (<https://ejscreen.epa.gov/mapper/>).

EPA's EJSCREEN mapping tool<sup>8</sup> shows that West of 4th has these socioeconomic indicators above the state's 80th percentile:

- Demographic index.
- People of color population.
- Limited English speaking.

The map displays the South Seattle area, with a red circle highlighting the study area. The study area is centered around the intersection of S Lucile St and S Orcas St, near the Boeing Field/King Co Int'l Airport. The map includes labels for various streets and parks, such as West Seattle, South Seattle, Highland Park, Holly Park, Brighton, and Dunlap. Key streets shown include SW Spokane St, SW Alaska St, S Genesee St, S Lucile St, S Orcas St, S Juneau St, S Graham St, S Kenyon St, Seward Park Ave S, Reimer Ave S, 32nd Ave S, Bascott Ave S, Swift Ave S, Airport Way S, 13th Ave S, 15th Ave S, 4th Ave S, 1st Ave S, Colorado Ave S, 6th Ave S, 37th Ave S, 45th Ave S, 51st Ave S, 49th Ave S, 39th Ave SW, 35th Ave SW, 33rd Ave SW, 28th Ave SW, SW Thistle St, SW Cloverdale St, and SW Greenwood St. Parks shown include Seward Park, West Duwamish Greenbelt, and Seward Park. The Boeing Field/King Co Int'l Airport is also labeled.

Figure 9: Environmental justice demographic screening boundaries around West of 4th, from EPA's EJSCREEN mapping tool.

According to EJSscreen census data, the households that speak English “less than very well” make up 38 percent of the area population. Spoken languages include Asian-Pacific Islander languages and Spanish.

The population near the site includes non-English speaking households. According to census data from 2018 to 2022, “languages spoken at home” include the following non-English spoken languages:

<sup>8</sup> Data obtained with EPA's EJSCREEN mapping tool on 1/10/2025 (<https://ejscreen.epa.gov/mapper/>).

- Tagalog, including Filipino (10 percent).
- Chinese, including Mandarin and Cantonese (9 percent).
- Spanish (7 percent).
- Vietnamese (5 percent).

## Outreach activities and language access

Based on this analysis, we will conduct the following outreach activities for this site:

- Contact cultural organizations and leaders in these communities.
- Provide information about requesting language services in all public materials.
- Provide information for this site in Chinese, Spanish, Tagalog, and Vietnamese for all basic outreach materials.
- Translate all documents that are vital or critical to well-being for language groups that are either 5 percent of the population or more than 1,000 people.

### **To request translation services, please contact:**

Janelle Anderson

Community Outreach & Environmental Education Specialist

Washington Department of Ecology

Northwest Regional Office

P.O. Box 330316

Shoreline, WA 98133

Phone: 425-301-6454

Email: [Janelle.anderson@ecy.wa.gov](mailto:Janelle.anderson@ecy.wa.gov)

Ecology will contact cultural community organizations as part of our outreach and provide information in other languages following federal guidance.<sup>9</sup> When appropriate, we will provide outreach materials in these languages. We strive to make our public participation efforts as inclusive as possible and welcome your input about how to reach the nearby community.

## Tribal involvement

The federally recognized Muckleshoot, Snoqualmie, Stillaguamish, Puyallup, and Suquamish Tribes have fishing rights within or just north of the Lower Duwamish Waterway. The Duwamish Tribe also actively fishes the Duwamish River. We'll invite these Tribes to engage in decision-making during the process on a government-to-government basis.

---

<sup>9</sup> Guidance to Environmental Protection Agency Financial Assistance Recipients Regarding Title VI Prohibition Against National Origin Discrimination Affecting Limited English Proficient Persons, 69 Fed. Reg. § 35602 (June 15, 2004).

## Public Participation Activities

Members of the public may ask questions, submit informal comments, or share site information at any time. Interested parties don't need to wait for a formal public comment period to contact Ecology.

However, to be included in the formal site record, comments about the site investigation, cleanup alternatives, or cleanups must be submitted during formal comment periods. In addition, the public is invited to review site documents before they become final. This is the most direct way to learn more about the site and be involved in decision-making about the cleanup.

### How we share information with the community

During specific stages of the cleanup, Ecology will mail notices about public comment periods to addresses around the West of 4th site. The mailing list area varies depending on the type of contamination and its location, but the list will at least include addresses within a quarter-mile radius of the site and other interested organizations and individuals. These notices will provide general information about the site, contact information for submitting comments, and times and locations of public meetings or hearings—or how to request one if a meeting is not yet scheduled.

Ecology may also develop documents outside of comment periods to keep the community updated on the site's status. These informational documents will be available online and in document repositories. Print copies may be mailed to the nearby community if we feel the message warrants the extra costs.

Comment period notices and other site announcements may also be posted in the community (for example, in local businesses, schools, and libraries).

### Postal mailing list

Ecology maintains a mailing list that includes addresses near the site. This mailing list also includes local, state, Tribal, and federal government contacts.

Everyone will receive public comment notices when draft documents are available.

We'll add additional individuals, organizations, and other interested parties to the mailing list as requested. If you would like to be added to the mailing list for this site, please contact Janelle Anderson at 425-301-6454 or [janelle.anderson@ecy.wa.gov](mailto:janelle.anderson@ecy.wa.gov).

## Site Register

Public comment periods, events, and other cleanup notices are published in Ecology's [Site Register](#).<sup>10</sup> To receive the Site Register by email, please [subscribe online](#)<sup>11</sup> or contact Sarah Kellington at [sarah.kellington@ecy.wa.gov](mailto:sarah.kellington@ecy.wa.gov) or 360-280-3167.

## Newspaper display ads or legal notices

We will announce public comment periods and events for this site in ads or notices published in the [Seattle Times](#),<sup>12</sup> [elSieteDias](#),<sup>13</sup> and [Northwest Asian Weekly](#).<sup>14</sup>

## Ecology's website and social media platforms

We have a website for [West of 4th](#)<sup>15</sup> with more information and related documents. Information may also be shared about cleanup sites through social media sites, [news releases](#),<sup>16</sup> and [Ecology's blog](#).<sup>17</sup>

## Document repositories

In-person document review is available at the following locations:

### Washington State Department of Ecology

Northwest Region Office

15700 Dayton Ave N.

Shoreline, WA 98133-9716

Reception (24-hour): 206-594-0000

### Seattle Public Library

South Park Branch

8604 8th Ave S.

Seattle, WA 98108

Telephone: (206) 615-1688

To schedule an appointment at our Shoreline office, please contact:

Michael Hart

[michael.hart@ecy.wa.gov](mailto:michael.hart@ecy.wa.gov)

Public Disclosure Coordinator

---

<sup>10</sup> [ecology.wa.gov/Regulations-Permits/Guidance-technical-assistance/Site-Register-lists-and-data](http://ecology.wa.gov/Regulations-Permits/Guidance-technical-assistance/Site-Register-lists-and-data)

<sup>11</sup> [public.govdelivery.com/accounts/WAECY/subscriber/new?topic\\_id=WAECY\\_118](http://public.govdelivery.com/accounts/WAECY/subscriber/new?topic_id=WAECY_118)

<sup>12</sup> [www.seattletimes.com/](http://www.seattletimes.com/)

<sup>13</sup> [elsietedias.com/](http://elsietedias.com/)

<sup>14</sup> [nwasianweekly.com/](http://nwasianweekly.com/)

<sup>15</sup> [apps.ecology.wa.gov/cleanupsearch/site/2622](http://apps.ecology.wa.gov/cleanupsearch/site/2622)

<sup>16</sup> [ecology.wa.gov/About-us/Get-to-know-us/News](http://ecology.wa.gov/About-us/Get-to-know-us/News)

<sup>17</sup> [ecology.wa.gov/blog](http://ecology.wa.gov/blog)

## Website Repositories

- [Ecology's West of 4th webpage](#)<sup>18</sup>
- [West of 4th Group](#)<sup>19</sup>
- [Art Brass Plating](#)<sup>20</sup>
- [Blaser Casting Corporation](#)<sup>21</sup>
- [Capital Industries](#)<sup>22</sup>

## Signs around the cleanup site

We may also display signs with information about project status, traffic impacts, and health risks around the cleanup site.

## How to share information with us

You may ask questions, submit informal comments, or share site information with us at any time. Please contact Janelle Anderson at 425-301-6454 or [janelle.anderson@ecy.wa.gov](mailto:janelle.anderson@ecy.wa.gov).

To be included in the formal site record, comments must be submitted during formal public comment periods. At minimum, MTCA requires 30-day public comment periods for draft cleanup documents and 14-day comment periods for SEPA documents. SEPA documents are often made available for public review with other cleanup documents. In that case, we combine the comment periods, and they will last at least 30 days. We may hold comment periods longer than 30 days.

We may also identify public concerns and cleanup goals by meeting with and soliciting information from interested community members and organizations. To collaborate with us about this site, please contact Janelle Anderson at 425-301-6454 or [janelle.anderson@ecy.wa.gov](mailto:janelle.anderson@ecy.wa.gov).

## Public comment periods

Formal 30-day comment periods allow members of the public to comment on draft documents, legal agreements, and proposed cleanup actions. If there is enough interest, Ecology may extend the public comment period. When Ecology oversees SEPA determinations, we hold comment periods for at least two weeks and comment periods may last 30 days or more when other cleanup documents are available for review at the same time.

Following a comment period, we publish all the input we received and respond to comments and questions. If the comments result in significant changes to the cleanup documents, then

---

<sup>18</sup> [ecology.wa.gov/WestOf4th](http://ecology.wa.gov/WestOf4th)

<sup>19</sup> [geosyntec.com/Clients/W4/](http://geosyntec.com/Clients/W4/)

<sup>20</sup> [geosyntec.com/Clients/artbrass/](http://geosyntec.com/Clients/artbrass/)

<sup>21</sup> <https://www.blasercasting.com/>

<sup>22</sup> [www.farallonconsulting.com/public-access/](http://www.farallonconsulting.com/public-access/)



the documents will be revised and re-issued for public review. If the comments don't result in significant changes, they become final.

## Public events

We hold public meetings, workshops, open houses, and public hearings based on community interest. If we haven't scheduled a meeting, we will hold one if 10 or more people request it. We may extend the public comment period so the meeting occurs during it.

Events are held near the site at venues that meet Americans with Disabilities Act standards. Public meetings, workshops, open houses, and hearings are announced in advance using a variety of methods.

## Americans with Disabilities Act

The Department of Ecology is committed to providing people with disabilities access to information and services by meeting or exceeding the requirements of the Americans with Disabilities Act (ADA), Sections 504 and 508 of the Rehabilitation Act, and Washington State Policy #188.

To request an ADA accommodation, contact Ecology by phone at 360-407-6700 or email at [hwtrpubs@ecy.wa.gov](mailto:hwtrpubs@ecy.wa.gov). For Washington Relay Service or TTY call 711 or 877-833-6341. Visit [Ecology's ADA website](#)<sup>23</sup> for more information.

## Plan Amendments

Ecology developed this public participation plan following MTCA regulations (WAC 173-340-600). We review it as the cleanup progresses and amend it, as necessary. You may suggest amendments to Janelle Anderson by phone at 425-301-6454 or email [janelle.anderson@ecy.wa.gov](mailto:janelle.anderson@ecy.wa.gov).

This plan includes information for the public regarding opportunities for public involvement and comment. The planned outreach activities will keep the public informed and provide ways for people to communicate their concerns and questions.

If you feel the planned outreach activities are insufficient or need changes, we welcome your feedback. Different outreach activities or outreach tools can be used right away, with or without updating this plan.

---

<sup>23</sup> [ecology.wa.gov/accessibility](http://ecology.wa.gov/accessibility)

## List of Abbreviations and Acronyms

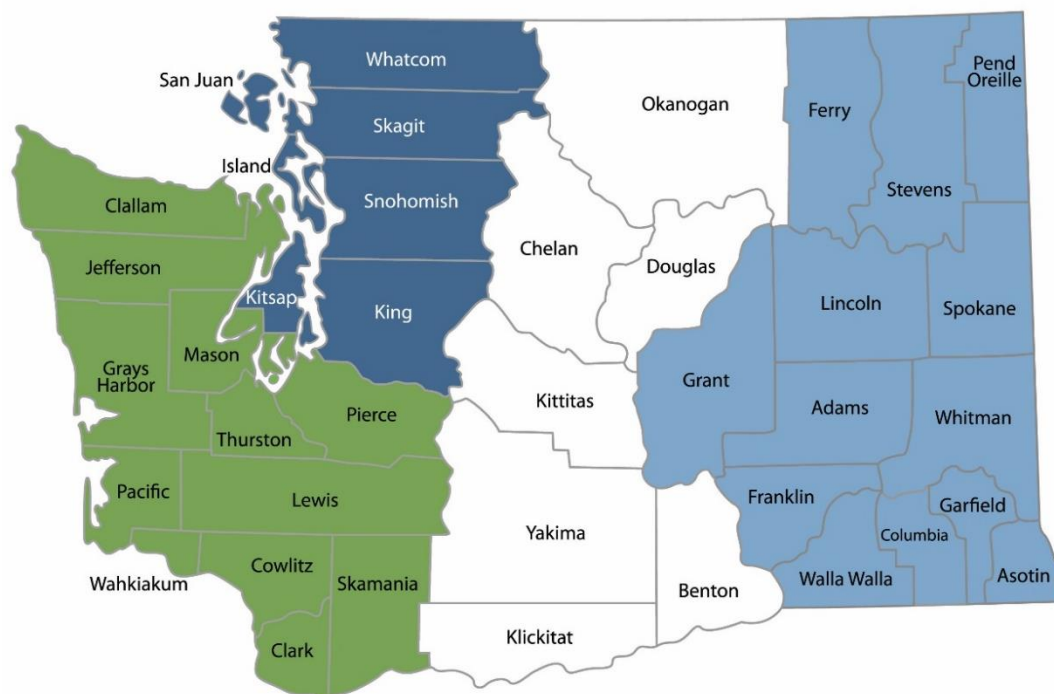
Table 2. List of abbreviations and acronyms.

| Abbreviation or acronym | Definition  |
|-------------------------|---|
| <b>ADA</b>              | Americans with Disabilities Act                                       |
| <b>AO</b>               | Agreed order  |
| <b>ABP</b>              | Art Brass Plating, Inc.   |
| <b>Blaser</b>           | Blaser Die Casting, Inc.  |
| <b>BEI</b>              | Burlington Environmental Inc.   |
| <b>BNSF</b>             | Burlington Northern Santa Fe  |
| <b>Capital</b>          | Capital Industries, Inc.  |
| <b>CAP</b>              | Cleanup action plan   |
| <b>Clean Earth</b>      | Clean Earth Environmental Solutions, Inc.                             |
| <b>Cleanup</b>          | Corrective action   |
| <b>Ecology</b>          | Washington State Department of Ecology                                |
| <b>EJ</b>               | Environmental justice   |
| <b>EJSCREEN</b>         | EPA's Environmental Justice Screening and Mapping Tool                |
| <b>EPA</b>              | U.S. Environmental Protection Agency                                  |
| <b>FS</b>               | Feasibility study   |
| <b>MTCA</b>             | Model Toxics Control Act  |
| <b>PLP</b>              | Potentially liable party  |
| <b>PPP, Plan</b>        | Public participation plan   |
| <b>PSC</b>              | Phillips Services Corporation   |
| <b>RCRA</b>             | Resource Conservation and Recovery Act                                |
| <b>RI</b>               | Remedial investigation  |
| <b>SEPA</b>             | State Environmental Policy Act  |
| <b>Site</b>             | Area where hazardous substances at the facility are currently located |
| <b>SU1</b>              | Site Unit 1   |
| <b>SU2</b>              | Site Unit 2   |
| <b>TSD</b>              | Treatment, storage, and disposal facility                             |
| <b>WAC</b>              | Washington Administrative Code  |



## Department of Ecology's Region Offices

### Map of Counties Served



**Southwest Region**  
360-407-6300

**Northwest Region**  
206-594-0000

**Central Region**  
509-575-2490

**Eastern Region**  
509-329-3400

| Region              | Counties served  | Mailing Address                        | Phone        |
|---------------------|--|--|--------------|
| <b>Southwest</b>    | Clallam, Clark, Cowlitz, Grays Harbor, Jefferson, Mason, Lewis, Pacific, Pierce, Skamania, Thurston, Wahkiakum           | PO Box 47775<br>Olympia, WA 98504      | 360-407-6300 |
| <b>Northwest</b>    | Island, King, Kitsap, San Juan, Skagit, Snohomish, Whatcom   | PO Box 330316<br>Shoreline, WA 98133   | 206-594-0000 |
| <b>Central</b>      | Benton, Chelan, Douglas, Kittitas, Klickitat, Okanogan, Yakima   | 1250 W Alder St<br>Union Gap, WA 98903 | 509-575-2490 |
| <b>Eastern</b>      | Adams, Asotin, Columbia, Ferry, Franklin, Garfield, Grant, Lincoln, Pend Oreille, Spokane, Stevens, Walla Walla, Whitman | 4601 N Monroe<br>Spokane, WA 99205     | 509-329-3400 |
| <b>Headquarters</b> | Across Washington  | PO Box 47600<br>Olympia, WA 98504      | 360-407-6000 |