



HALEY & ALDRICH, INC.
3131 Elliott Avenue
Suite 600
Seattle, WA 98121
206.324.9530

MEMORANDUM

January 22, 2026
File No. 0214718-000

TO: Washington State Department of Ecology
Tamara Welty

C: Swickard Auto Group
Eric Iverson, Senior Director of Real Estate and Facilities

FROM: Haley & Aldrich, Inc.
Jason M. Sved, P.E., Project Engineer
Julie K.W. Wukelic, Senior Principal Engineer

SUBJECT: Notification of Geotechnical Investigation
Seattle Volvo Dealership
811 S Massachusetts Street
Seattle, Washington

This memorandum was prepared by Haley & Aldrich, Inc. (Haley & Aldrich) on behalf of Swickard Auto Group to notify the Washington State Department of Ecology (Ecology) of an upcoming geotechnical investigation at 811 South Massachusetts Street (formerly 1709 Airport Way South), King County tax parcel number 7666203295 (the Property), pursuant to the Environmental Covenant recorded on July 28, 2010 (Ecology, 2010).

As part of a geotechnical investigation program for proposed car dealership structures on the Property, Swickard Auto Group requests Ecology's approval to disturb the existing soil cap to push cone penetration tests (CPTs) and drill an exploratory soil boring at the approximate locations shown in Figure 1.

The CPTs will penetrate the subsurface (to depths of approximately 60 feet), but do not generate spoils. The soil boring (planned to a depth of approximately 80 feet) will be completed using augers and/or mud rotary techniques. Standard penetration test (SPT) sampling will be completed at approximately 5-foot intervals as the boring is advanced. Investigation derived waste (IDW) from the boring will be comprised of soil, groundwater, and drilling mud. SPT samples and IDW will be field screened, drummed

on site, sampled, and analyzed to characterize for disposal at an appropriate facility (dependent on the analytical results).

Upon completion, the CPTs and soil boring will be backfilled and sealed in accordance with Washington State regulations. The ground surface will be patched with asphalt to match pre-exploration conditions.

Attachment:

Figure 1 - Proposed Explorations

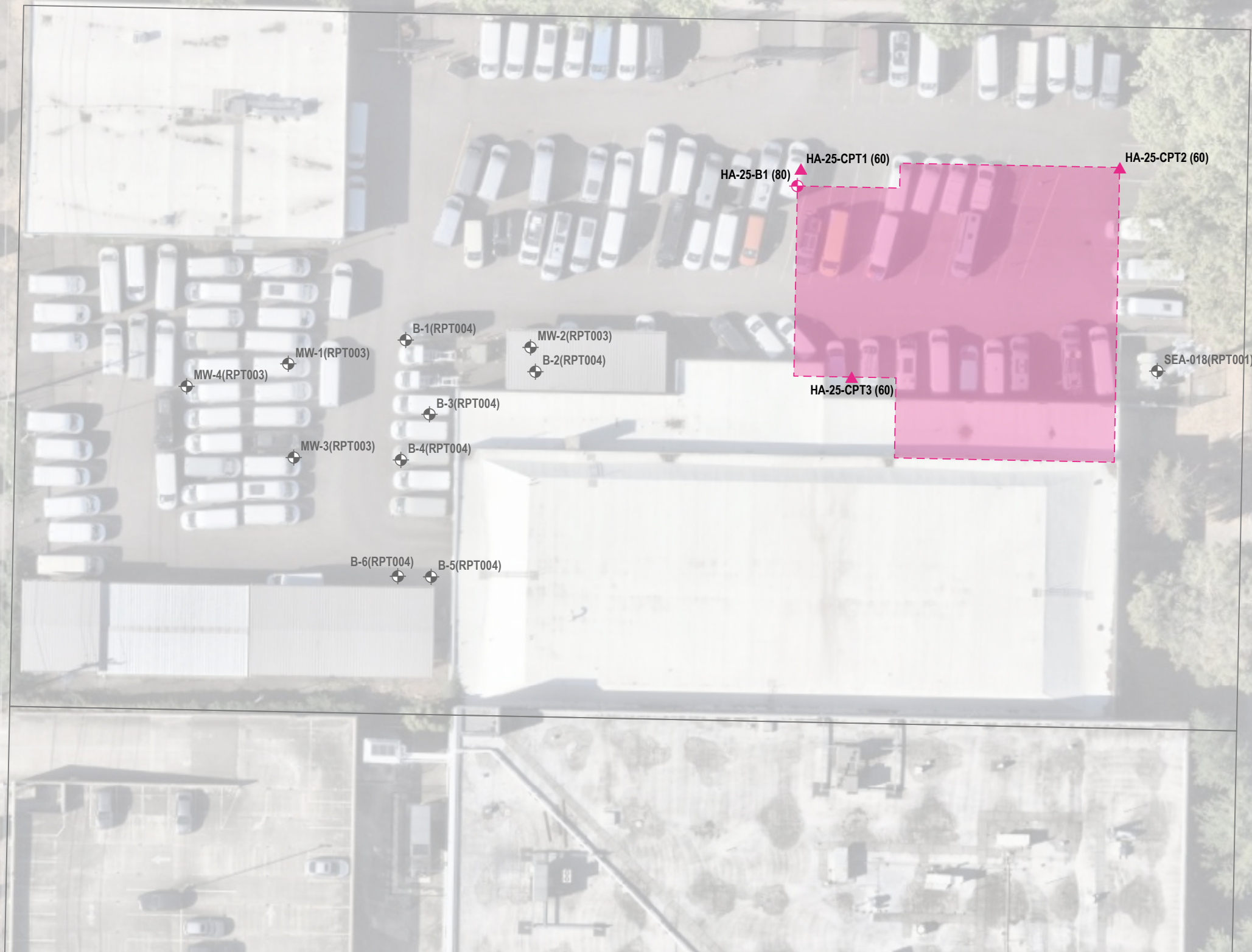
Reference

1. Washington State Department of Ecology, 2010. Environmental Covenant. Reference Number 20050208001801. July 28.






https://haleyaldrich.sharepoint.com/sites/SwickardAutoGroup/Shared Documents/0214718.Seattle Volvo Dealership/Deliverables/Ecology Notification Memo/2026_0122_HAI_EcologyNotificationMemo_F.docx

GIS FILE PATH: \\haleyaldrich.com\share\CF\Projects\2024\718\GIS\24718 SEATTLE VOLVO DEALERSHIP.aprx - USER: mschwitzer - LAST SAVED: 12/11/2025 4:15 PM

S MASSACHUSETTS ST

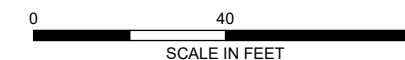


LEGEND

-  PROPOSED BORING (DEPTH IN FEET)
-  PROPOSED CONE PENETRATION TEST (DEPTH IN FEET)
-  HISTORICAL EXPLORATION
-  PROPOSED BUILDING
-  PARCEL BOUNDARY

NOTES

1. ALL LOCATIONS AND DIMENSIONS ARE APPROXIMATE.
2. ASSESSOR PARCEL DATA SOURCE: KING COUNTY
3. AERIAL IMAGERY SOURCE: NEARMAP, AUGUST 21, 2025



**HALEY
ALDRICH**

SEATTLE VOLVO DEALERSHIP
SEATTLE, WASHINGTON

PROPOSED EXPLORATIONS

DECEMBER 2025

FIGURE 1