

Cleanup options for Crowley Marine Services



7400 8th Ave S. Seattle, WA

Comments accepted:

May 4 (12:00 a.m.) -
June 2, 2026 (11:59 p.m.)

Submit comments:

Online: [go.ecology.wa.gov/
CrowleyMarineComments](https://go.ecology.wa.gov/CrowleyMarineComments)

By mail:

Beau Johnson, Site Manager
PO Box 330316
Shoreline, WA 98133-9716
(206) 638-0816
beau.johnson@ecy.wa.gov

Document review:

[go.ecology.wa.gov/
CrowleyMarine](https://go.ecology.wa.gov/CrowleyMarine)
Seattle Public Library
South Park Branch
8604 8th Ave S.
Seattle, WA 98108

Site info:

7400 8th Ave S., Seattle, WA
Facility Site ID: 1940187
Site Cleanup ID: 2520

Public outreach contact:

Meredith Waldref
Outreach Planner
meredith.waldref@ecy.wa.gov
(425) 229-3683

Comment on cleanup options for a Lower Duwamish Waterway site

We invite you to comment on cleanup options for the site called Crowley Marine Services 8th Ave S. The site is in Seattle’s Georgetown neighborhood near the King County International Airport on the banks of the Lower Duwamish Waterway (LDW).

The following document is available for review and comment:

Feasibility study: A feasibility study compares options for cleaning up a site. All the options must meet Washington State standards. The goal of the comparison is to find the method that provides the most protective and permanent cleanup that is still practical.

Learn more at a neighborhood meeting

We will present a summary of the work at this cleanup site in Georgetown and South Park. Contact Meredith Waldref with questions about these events. Contact information to the left.

South Park Neighborhood Association

Tuesday, May 12 (6:00 p.m.)
Duwamish River Community Hub
8600 14th Ave S., Seattle

Georgetown Community Council

Monday, May 18 (7:00 p.m.)
Georgetown Old City Hall
6202 13th Ave S., Seattle



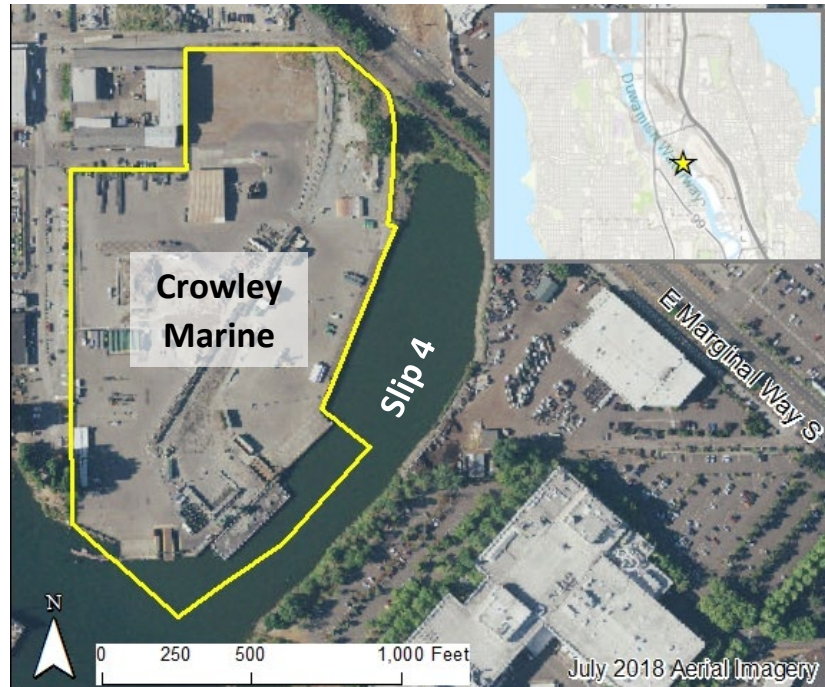
Language Services

Español (p. 4), 中文 (見第 4頁), Tiếng Việt (Trang 4), ກາສາໄຊ້ງ (ອໍຕັ້ງ 4)

Toxics Cleanup Program

Site background

The site is about 16 acres of industrial waterfront property. Before the channelization of the Duwamish River in the early 1900s, the area was agricultural land and an open field pasture. Since the early 1900s, the area has since been used for a variety of industrial and manufacturing activities, including sawmill operations and pipe and chain manufacturing. The southeastern portion of the site includes the previous path of the Duwamish River before it was channelized. This section is now called Slip 4.



Aerial view of the Crowley Marine cleanup site

Feasibility study: considering options for cleanup

The Potentially liable person (PLP), 8th Avenue Terminals, Inc, prepared a feasibility study, which evaluated five different cleanup alternatives. The costs and environmental benefits of the alternatives were then compared, leading to the selection of alternative 2 as the proposed cleanup option.

The following five cleanup options were considered:

- **Alternative 1:** Surface capping, groundwater cutoff, monitored natural attenuation, and institutional controls
- **Alternative 2:** Surface capping, groundwater cutoff and treatment, monitored natural attenuation, and institutional controls
- **Alternative 3:** In-situ solidification/stabilization, groundwater cutoff and treatment, and monitored natural attenuation
- **Alternative 4:** In-situ solidification/stabilization and monitored natural attenuation
- **Alternative 5:** Soil excavation, groundwater recovery, and monitored natural attenuation

Understanding the preferred cleanup option

Alternative 2 consists of the following cleanup activities:

- **Surface capping:** Areas with contaminated soil that are currently unpaved would be covered with new asphalt. This "cap" creates a barrier between people and the contamination and helps prevent rainwater from pushing contamination deeper into the ground.
- **Groundwater cutoff and treatment:** A wall would be built underground near the shoreline to stop contaminated groundwater from flowing into the LDW. Most of the walls will be made from a clay-soil mix that blocks water. However, five special treatment sections, called permeable reactive

Toxics Cleanup Program

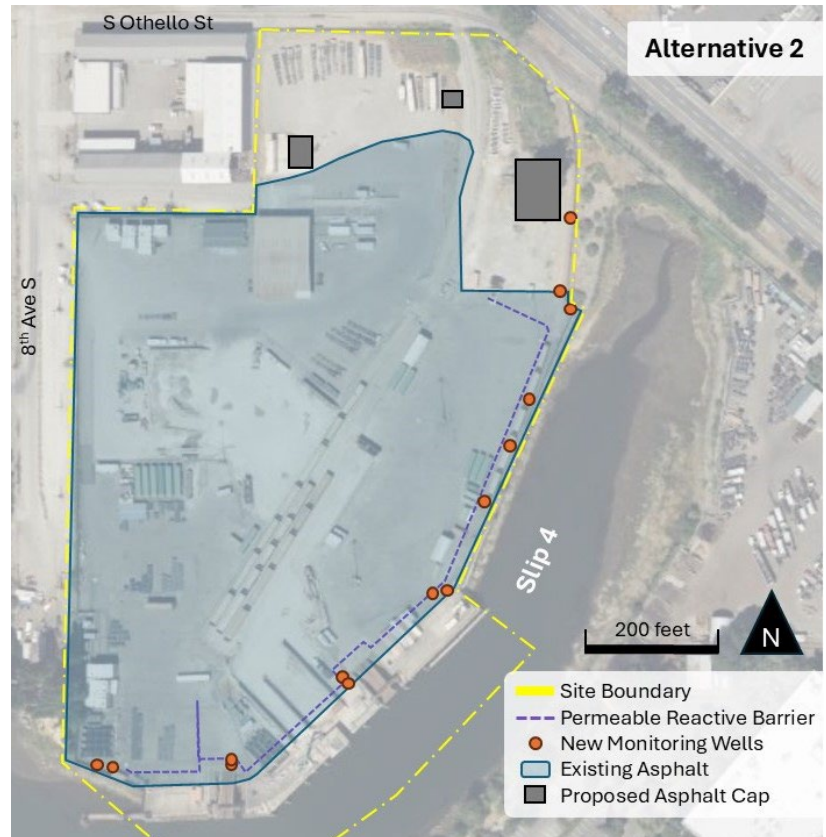
barriers (PRBs), would be added to clean the water that flows through them. These PRBs would contain natural materials (like clay, sand, gravel, and special metals) that remove harmful chemicals such as arsenic, copper, and certain oily pollutants.

Before building the treatment sections of the wall, tests would be done to find the best materials for filtering out the pollution. The filters in the wall are expected to last about 10 years and would be replaced when needed.

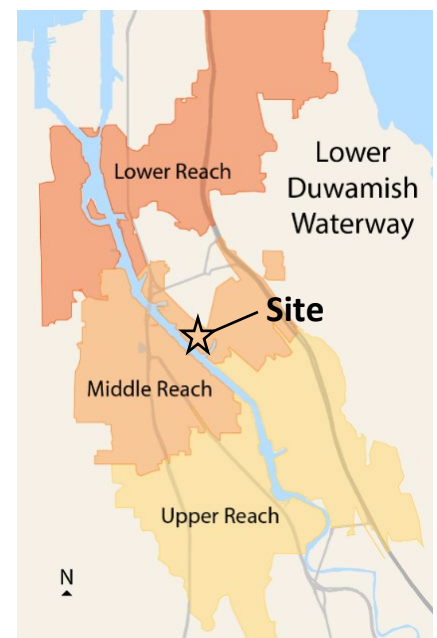
- Monitored natural attenuation:** A cleanup method that reduces concentrations of contaminants through natural processes over time. The PLP will conduct frequent groundwater monitoring to make sure levels are reducing.
- Institutional Controls:** Legal tools like deed restrictions would be put in place to make sure the capped areas aren't disturbed and that the groundwater under the property isn't used in the future.

Why this site matters

This site is along the [Lower Duwamish Waterway](https://ecology.wa.gov/LDW)¹ Superfund Site (LDW), which consists of a 5-mile stretch of the Duwamish River. The EPA added the [LDW Superfund Site](https://www.epa.gov/superfund/lower-duwamish)² to the Superfund National Priorities List in 2001. Ecology is working to stop or reduce sources of contamination to the LDW Superfund Site, an effort known as "[source control](https://ecology.wa.gov/LDW-source-control)"³," so that the EPA can proceed with the cleanup of the river sediment.



Approximate locations of cleanup actions described in alternative 2.



The Crowley Marine Site is in the Middle Reach.

¹ <https://ecology.wa.gov/LDW>

² <https://www.epa.gov/superfund/lower-duwamish>

³ <https://ecology.wa.gov/LDW-source-control>

Toxics Cleanup Program

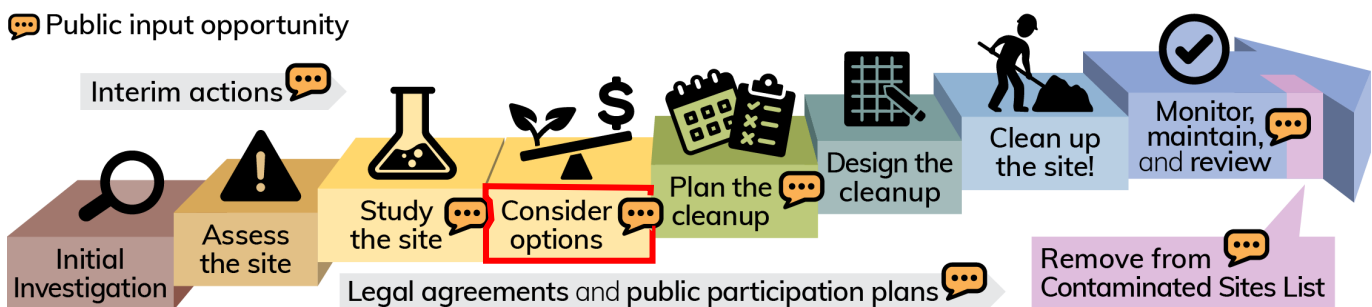
What happens next?

We will consider all comments received during this public comment period and may make changes to the documents. If the documents require significant changes, we will hold another public comment period.

The next step in the cleanup process for this site is the creation of a cleanup action plan which will describe the cleanup in more detail. This document will be released for a public comment period.

Our cleanup process

The Model Toxics Control Act ([MTCA](https://ecology.wa.gov/mtca)⁴) is Washington’s environmental cleanup law. It provides requirements for contaminated site cleanup and sets standards that protect human health and the environment. Ecology is responsible for administering MTCA, including oversight of cleanups. The [MTCA cleanup process](https://ecology.wa.gov/MTCA-process)⁵ is completed in steps (see graphic below) over a variable timeline.



Language Services

Español: Para ver una copia de esta hoja informativa en español, visita go.ecology.wa.gov/CrowleyMarine, the Seattle Public Library South Park Branch, llama al (360) 407-6097, o manda un correo electrónico a preguntas@ecy.wa.gov.

中文: 要查看 中文 情况说明书, 请访问西雅图公共图书馆南公园分馆 go.ecology.wa.gov/CrowleyMarine, the Seattle Public Library South Park Branch 致電 (425) 229-3683, 或電子郵件 meredith.waldref@ecy.wa.gov.

Tiếng Việt: Để xem bản sao của Tờ Thông Tin này bằng tiếng Việt, hãy truy cập trang mạng: go.ecology.wa.gov/CrowleyMarine, the Seattle Public Library South Park Branch, hoặc gọi (425) 229-3683, hoặc gửi email đến meredith.waldref@ecy.wa.gov.

ភាសាខ្មែរ ដើម្បីមើលឯកសារថតចម្លងភាសាខ្មែរនេះជាភាសា ភាសាខ្មែរ សូមចូលមើលវិបសាយ go.ecology.wa.gov/CrowleyMarine, សាខា Seattle Public Library South Park Branch, សូមហៅទូរស័ព្ទលេខ (425) 229-3683, ឬអ៊ីម៉ែល meredith.waldref@ecy.wa.gov.

⁴ <https://ecology.wa.gov/mtca>

⁵ <https://ecology.wa.gov/MTCA-process>

Toxics Cleanup Program
PO Box 330316
Shoreline, WA 98133-9716

Comment on cleanup options for a Lower Duwamish cleanup site

Español (p. 4) | 中文 (見第 4 頁) | Tiếng Việt (Trang 4)
ភាសាខ្មែរ (ទំព័រ 4)

Public Comment Period

May 4 (12:00 a.m.) – June 2, 2026 (11:59 p.m.)

Cleanup options for Crowley Marine Services are available for review and comment. This cleanup site is located along the Lower Duwamish Waterway.

Join us at a neighborhood meeting in May to learn more and ask questions! Details on page 1.

ADA accessibility

To request an ADA accommodation, contact us by phone at 425-533-5537 or email LDW@ecy.wa.gov, or visit ecology.wa.gov/Accessibility. For Relay Service or TTY call 711 or 877-833-6341.



Aerial map of the Crowley Marine cleanup site.