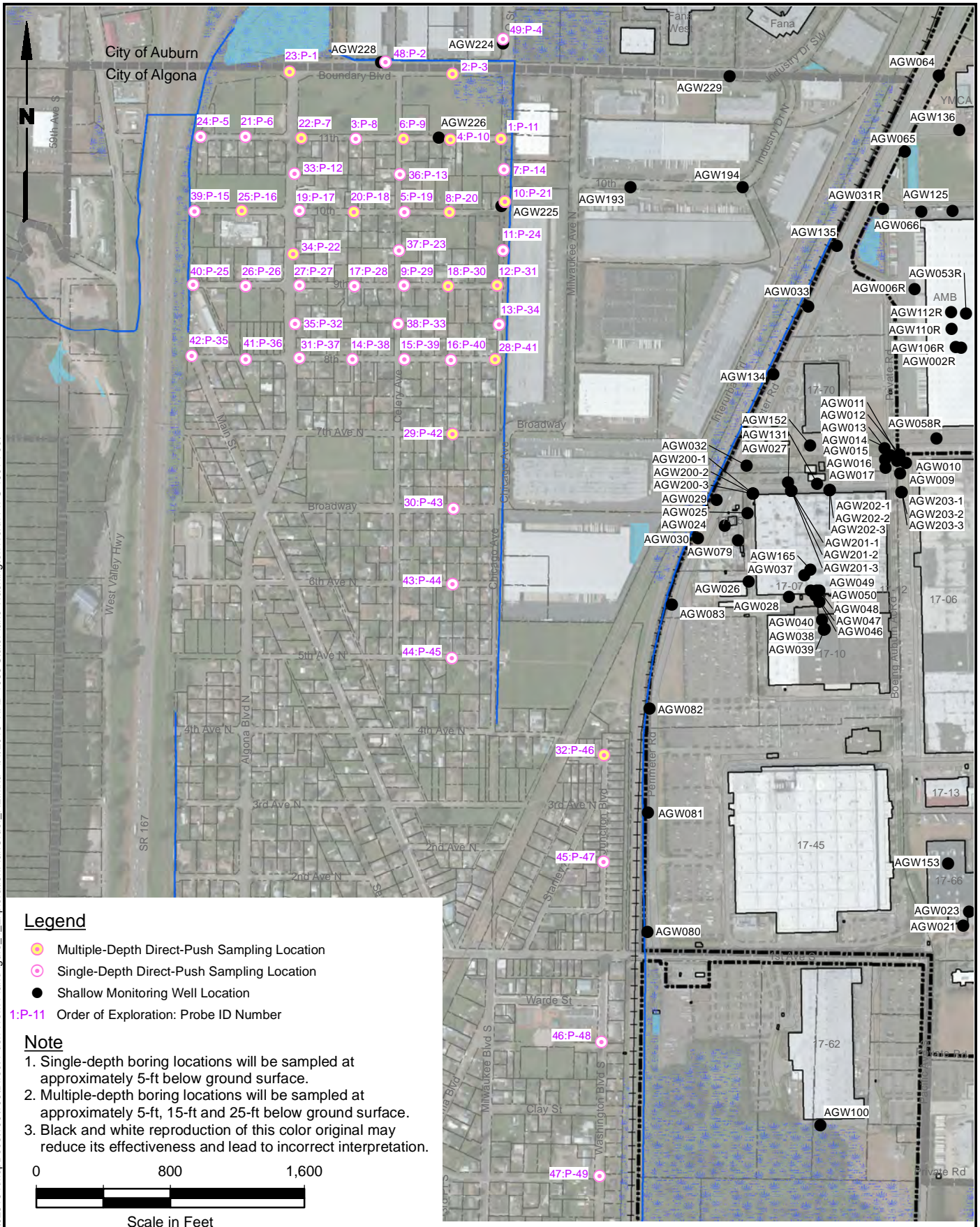


Y:\Projects\025164\MapDocs\100109\Direct Push Work Plan\Figure 4\_ExplorationPlanOrder\_R2.mxd 4/1/2013 NAD 1983 StatePlane Washington North FIPS 4601 Feet

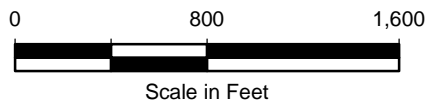


**Legend**

- Multiple-Depth Direct-Push Sampling Location
  - Single-Depth Direct-Push Sampling Location
  - Shallow Monitoring Well Location
- 1:P-11 Order of Exploration: Probe ID Number

**Note**

1. Single-depth boring locations will be sampled at approximately 5-ft below ground surface.
2. Multiple-depth boring locations will be sampled at approximately 5-ft, 15-ft and 25-ft below ground surface.
3. Black and white reproduction of this color original may reduce its effectiveness and lead to incorrect interpretation.



Base map source: Geometrix 2003; Aerial Photo Source: Bing Maps 2010; Parcel Data Source: King County GIS 2010



Boeing Auburn  
Auburn, Washington

**Exploration Plan**

Figure  
**4**

**TABLE 1  
ALGONA GEOPROBE INVESTIGATION  
DRAFT BOREHOLE GROUNDWATER ANALYTICAL RESULTS  
BOEING AUBURN**

Boring:	P-3	P-3	P-3	P-3	P-8	P-10	P-10	P-10	P-10
Location:	ASB0182-9	ASB0182-9b	ASB0182-15	ASB0182-25	ASB0183-5	ASB0184-5	ASB0184-5b	ASB0184-15	ASB0184-25
Depth (ft)	9	9	15	25	5	5	5	15	25
Final QA Completed?	Y	Y	Y	Y	Y	Y	Y	Y	Y
	4/4/2013	4/4/2013	4/4/2013	4/4/2013	4/4/2013	4/5/2013	4/5/2013	4/5/2013	4/5/2013
<b>VOLATILES (µg/L)</b>									
<b>Method SW8260C</b>									
cis-1,2-Dichloroethene	1.4	1.2	3.4	2.6	1.0 U	0.5	0.5	3.4	2.9
trans-1,2-Dichloroethene	0.2 U	0.2 U	0.4	0.2	1.0 U	0.2 U	0.2 U	0.4	0.3
Tetrachloroethene	0.2 U	0.2 U	0.2 U	0.2 U	1.0 U	0.2 U	0.2 U	0.2 U	0.2 U
Trichloroethene	2.4	1.8	12	7.6	1.0 U	0.2	0.2	6.9	6.6
Vinyl Chloride	2.1	2.1	0.3	0.2 U	1.0 U	1.3	1.3	0.5	0.3
<b>VOLATILES (µg/L)</b>									
<b>Method 8260C SIM</b>									
Trichloroethene	1.3	1.4	9.0	6.2	0.10 U	0.15	0.18	5.6	5.6
Vinyl Chloride	1.8	1.7	0.27	0.16	0.10 U	1.1	1.3	0.42	0.27

**TABLE 1  
ALGONA GEOPROBE INVESTIGATION  
DRAFT BOREHOLE GROUNDWATER ANALYTICAL RESULTS  
BOEING AUBURN**

Boring:	P-11	P-11	P-11	P-11	P-19
Location:	ASB0181-5	ASB0181-5b	ASB0181-15	ASB0181-25	ASB0185-5
Depth (ft)	5	5	15	25	5
Final QA Completed?	Y	Y	Y	Y	Y
	4/3/2013	4/3/2013	4/3/2013	4/3/2013	4/5/2013
<b>VOLATILES (µg/L)</b>					
<b>Method SW8260C</b>					
cis-1,2-Dichloroethene	1.0 U	1.0 U	<b>2.2</b>	<b>2.4</b>	<b>0.9</b>
trans-1,2-Dichloroethene	1.0 U	1.0 U	<b>0.3</b>	<b>0.2</b>	0.2 U
Tetrachloroethene	1.0 U	1.0 U	0.2 U	0.2 U	0.2 U
Trichloroethene	1.0 U	1.0 U	<b>3.5</b>	<b>5.6</b>	0.2 U
Vinyl Chloride	1.0 U	1.0 U	<b>2.8</b>	<b>0.3</b>	<b>1.1</b>
<b>VOLATILES (µg/L)</b>					
<b>Method 8260C SIM</b>					
Trichloroethene	<b>0.13</b>	<b>0.20</b>	<b>2.7</b>	<b>4.3</b>	0.020 U
Vinyl Chloride	<b>0.22</b>	<b>0.32</b>	<b>2.4</b>	<b>0.22</b>	<b>0.98</b>