

## **Agreed Order Amendment and SEPA Determination Available for Public Comment**

The Washington Department of Ecology (Ecology), the City of Seattle and South Park Property Development, LLC (SPPD) are proposing interim cleanup on part of the South Park Landfill site. The proposed interim actions are described in an amendment to the May 2009 legal agreement (Agreed Order) between Ecology, the City of Seattle, and SPPD. The interim cleanup actions will address contamination on a portion of the site, while the overall site investigations continue. Ecology invites the public to review and comment on the proposed interim actions.

### **Proposed Actions**

The proposed actions will reduce the chance of human contact with contaminants. It will also further reduce stormwater and groundwater contamination at the site. Contaminants can move from the landfill into the groundwater when it rains or into stormwater when it comes into contact with the landfill. The proposed actions include:

- **Constructing a landfill cap** to prevent human contact with the landfill, and keep rain and stormwater from coming into contact with landfill waste;
- **Installing landfill gas and surface water control systems** to control the release of landfill gas emissions from the site and move rainwater away from the site;
- **Restricting future land use activities** to minimize potential exposure to contamination and maintain the effectiveness of cleanup actions; and
- **Establishing groundwater and landfill gas monitoring** to evaluate the performance and effectiveness of the interim cleanup actions.

In addition, SPPD completed a State Environmental Policy Act (SEPA) checklist for the proposed activities to determine if they would have a negative impact on the environment. Ecology reviewed the SEPA checklist and made a Determination of Non-Significance. (See page 3 for more information on SEPA.)

### **Ecology wants your input! You are invited to:**

- **Review** the documents, including the **Amendment to the Agreed Order, Interim Action Work Plan, SEPA checklist and Determination of Non-Significance**
- **Send** your comments to Ecology for consideration.  
**Comments will be accepted April 29 - May 30, 2013.**

### **Comments Accepted**

**April 29 - May 30, 2013**

#### **Technical Questions**

Jerome Cruz, Site Manager  
Washington Department of Ecology  
Toxics Cleanup Program  
Northwest Regional Office  
3190 160th Avenue SE  
Bellevue, WA 98008

Phone: (425) 649-7094

E-mail: [Jerome.Cruz@ecy.wa.gov](mailto:Jerome.Cruz@ecy.wa.gov)

#### **Public Involvement**

Cassandra Garcia  
Phone: (425) 649-7052

E-mail:

[Cassandra.Garcia@ecy.wa.gov](mailto:Cassandra.Garcia@ecy.wa.gov)

#### **Document Review Locations**

**South Park Branch**  
**Seattle Public Library**  
8604 Eighth Avenue S.  
Seattle, WA 98108  
Phone: (206) 615-1688

**Washington Department of Ecology**  
**Northwest Regional Office**  
3190 160th Avenue SE  
Bellevue, WA  
By appointment only, call:  
(425) 649-7190

**For background information  
about the site,  
visit Ecology's website:**

<https://fortress.wa.gov/ecy/gsp/Sitepage.aspx?csid=1324>

**Facility Site ID # 2180**

## South Park Landfill Site

### Site Background Information and Cleanup Actions Taken to Date

The South Park Landfill site is a 40-acre property located in the South Park neighborhood at 8100 & 8200 2nd Avenue South. The site, originally owned by King County, was used as a landfill beginning in the 1930s. From the 1940s-1966, the City of Seattle used the landfill for refuse disposal. In 1966, the site stopped accepting refuse. From the 1950s-70s, part of the landfill was also used as an auto wrecking yard. From 1984-1996, King County leased portions of the site for storage, mostly consisting of truck storage.

Site investigations began in the mid-1980s. In 1999, King County entered into Ecology's Voluntary Cleanup Program to address contamination on the site, some of which had migrated off the landfill properties. In 2006, King County sold its 19.4 acre parcel to SPPD. The remaining area is divided between the City of Seattle's South Recycling and Disposal Station, and the Kenyon Business Park (private property).

The interim action area boundary generally follows the SPPD property boundary. The SPPD property is currently undeveloped land. Portions of the eastern half of the property are used for truck parking and to store empty box containers.

Access to the SPPD property is through two gates along 5th Avenue South. Other accessible portions of the property are fenced.

An investigation of contaminants is underway. The contaminants of potential concern for soil, groundwater and air at the site include:

#### Soil:

- Arsenic and lead
- Diesel and oil range petroleum hydrocarbons

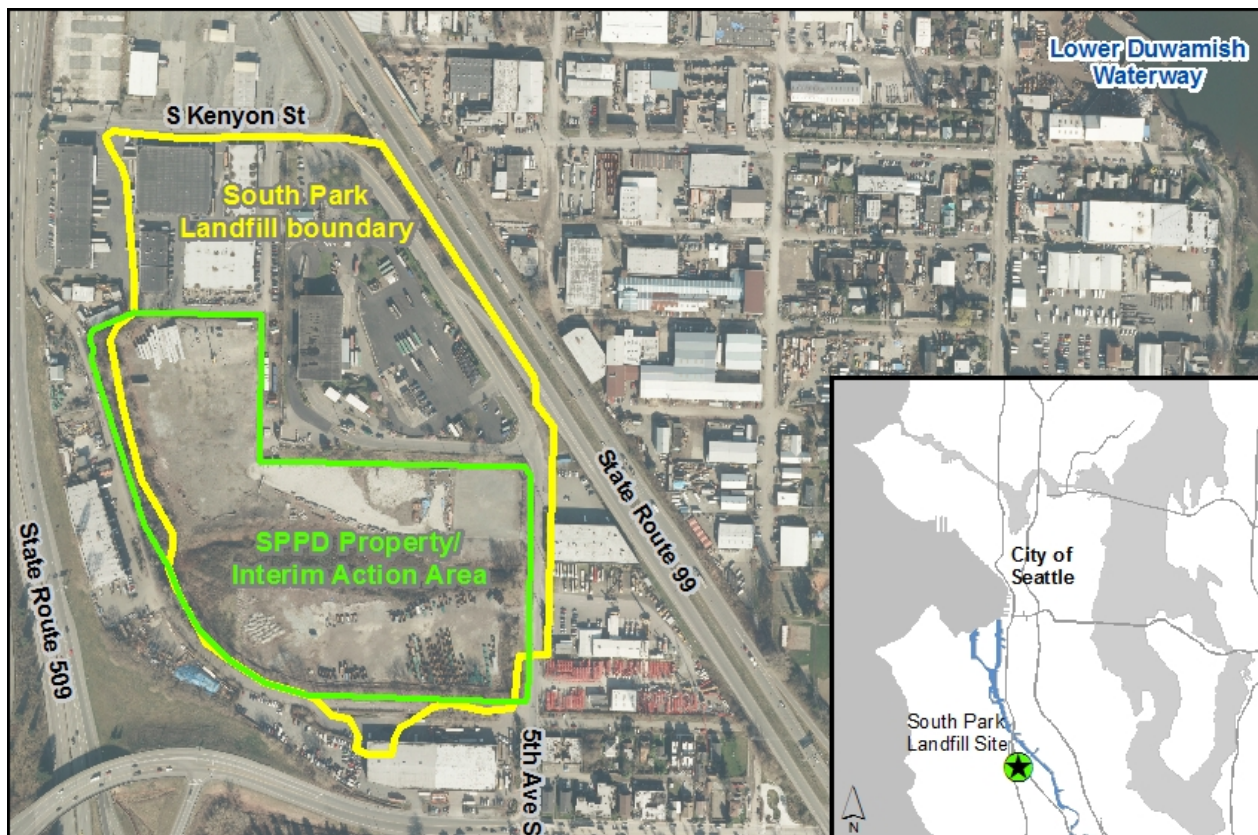
#### Groundwater:

- Arsenic, iron, and manganese
- Vinyl chloride
- Benzene and cis-1,2-dichloroethene

#### Air:

- Landfill gas (methane and carbon dioxide)
- Benzene and xylene

When the interim cleanup actions are finished, SPPD plans to develop the property for industrial or commercial use. The current actions are one step in the overall cleanup process. Cleanup investigations for the site are ongoing.



### What Happens Next?

1. Ecology will review and consider the comments and may change the documents based on your comments.
2. Ecology will create a document containing all of the comments received and Ecology's responses. This document will be sent to all those who commented and posted online.
3. The overall site investigations continue. Ecology is currently reviewing a Remedial Investigation and Feasibility Study (RI/FS) report.
4. The public will be provided with the opportunity to comment on the RI/FS report and the draft cleanup plan.

### What is the State Environmental Policy Act (SEPA)?

The Washington State Environmental Policy Act (SEPA) requires state and local agencies to review all projects that may have a negative impact on the environment. This includes cleanup projects. The result of a review is called a SEPA determination.

Ecology is issuing a Determination of Non-Significance (DNS) for the Interim Action. A DNS means that the project will probably not cause significant negative effects on the environment or local community. The public is welcome to review the decision and provide comments to Ecology during this comment period.

For more information about SEPA, visit:  
<http://www.ecy.wa.gov/programs/sea/sepa/e-review.html>

## Lower Duwamish Waterway Cleanup

The South Park Landfill site is located near the Lower Duwamish Waterway (LDW) cleanup site in south Seattle. The LDW site is a Superfund site that consists of the 5 mile stretch of the Duwamish River south of Harbor Island. The LDW site is designated as a contaminated site under both state and federal law due to contaminants in the river and intertidal sediments.

The South Park Landfill site is one of several sites near the LDW that are being addressed. Cleaning up pollution at these sites will reduce the threat to human health and the environment. This work will also help to prevent recontamination of the sediments after the LDW site cleanup is complete. Ecology is working with the U.S. Environmental Protection Agency (EPA) and other local agencies and businesses to clean up the Lower Duwamish.

**EPA and Ecology are currently holding a public comment period for proposed cleanup actions for river sediments and Ecology's long term source control plan. The comment period will run until June 13, 2013. The following documents are available for comment:**

- **[Proposed Plan for the Lower Duwamish Waterway Superfund Site](#)**
- **[Ecology's Source Control Strategy \(Appendix A\)](#)**
- **[Environmental Justice Analysis \(Appendix B\)](#)**

**For more information visit Ecology's website at**

**[http://www.ecy.wa.gov/programs/tcp/sites\\_brochure/lower\\_duwamish/lower\\_duwamish\\_hp.html](http://www.ecy.wa.gov/programs/tcp/sites_brochure/lower_duwamish/lower_duwamish_hp.html)** or  
**EPA's Web site at <http://yosemite.epa.gov/r10/cleanup.nsf/sites/lduwamish>.**



DEPARTMENT OF  
**ECOLOGY**  
State of Washington  
3190 160th Street SE  
Bellevue, WA 98008

## **South Park Landfill Seattle, WA**

### **Public Comment Period for Agreed Order Amendment, Interim Work Plan and SEPA Determination**

**Public Comment Period:  
April 29 - May 30, 2013**

**Facility Site ID #: 2180**

If you need this publication in an alternative format call reception at 425-649-7070. Persons with hearing loss, call 711 for Washington Relay Service. Persons with a speech disability, call 877-833-6341.

#### **Want to get more involved with efforts to clean up the Duwamish River?**

Contact the Duwamish River Cleanup Coalition at [contact@duwamishcleanup.org](mailto:contact@duwamishcleanup.org), (206) 954-0218 or visit <http://duwamishcleanup.org/index.html>

El Departamento de Ecología del Estado de Washington le invita a comentar sobre la enmienda a una Orden Acordada (acuerdo legal) y sobre una Determinación de SEPA para las acciones de limpieza en el Sitio del Relleno Sanitario de South Park en el sur de Seattle. Para obtener más información, lea el documento inserto; o para ayuda en español comuníquese con Gustavo Ordóñez al (360) 407-6619.

Bộ Môi Sinh tiểu bang Washington mời quý vị đóng góp ý kiến về các sửa đổi đến Sắc lệnh đồng thuận và một quyết nghị SEPA liên quan đến hoạt động dọn sạch tại địa điểm South Park Landfill phía nam của Thành phố Seattle. Muốn biết thêm tin tức, xin xem qua tài liệu đính kèm theo đây hoặc liên lạc đến ông Lê Teddy, số (360) 407-6948 hoặc điện thư [teddy.le@ecy.wa.gov](mailto:teddy.le@ecy.wa.gov)

華盛頓州生態管理署(生管署)邀請大眾對南方公園垃圾場 (South Park Landfill) 的清潔整治工作草擬同意命令修改案(Agreed Order Amendment) 和本州環境保護法案 (SEPA)提供建議。 若需任何中文消息請跟林昊聯絡。 電話：425-649-7187, 電子信箱：[lin461@ecy.wa.gov](mailto:lin461@ecy.wa.gov)

