

Work Plans And SEPA Determination Available for Public Comment and Public Meeting Planned

The Washington State Department of Ecology (Ecology) and the Port of Olympia (Port) entered into an Agreed Order in October 2008 to begin cleanup of contamination at the East Bay Redevelopment site in Olympia. As part of this Agreed Order, the Port was required to develop two work plans to complete an Interim Action (partial cleanup) and a Remedial Investigation at the site.

The Interim Action will be completed during construction of roads and utility lines, when the Port removes contaminated soil. The Interim Action Work Plan outlines how the contaminated soil will be removed. The Remedial Investigation will determine the nature and extent of contamination on the site.

Ecology has completed a **State Environmental Policy Act (SEPA)** review of the proposed Interim Action and the associated National Pollutant Discharge Elimination System (NPDES) permit (water quality permit). Ecology determined that these actions will not result in significant harm to the environment (Determination of Non-Significance (DNS)). The SEPA checklist and DNS form are also available for public review and comment at this time.

The Port of Olympia completed a SEPA review in 2007 for the East Bay Redevelopment Project. At that time, the cleanup was operating under the Voluntary Cleanup Program. To speed up the cleanup and ensure Ecology oversight, the site was transferred into the formal cleanup process in February 2008. SEPA regulations state that a SEPA determination should be issued for Interim Actions as part of the formal Model Toxics Control Act cleanup process. Therefore, a new SEPA review was completed.

Ecology Wants Your Input!

Ecology is asking for your comments on the Interim Action Work Plan. You are invited to:

- **Review** the Remedial Investigation and Interim Action Work Plans and the SEPA documents online or at the repository locations listed to the right.
- **Send** your written comments to Ecology for consideration. **Comments will be accepted March 16 through April 16, 2009.**

Comments Accepted

March 16 - April 16, 2009

Submit Comments and Technical Questions to:

Steve Teel, Site Manager
WA Department of Ecology
SWRO Toxics Cleanup Program
P.O. Box 47775
Olympia, WA 98504-7775
Phone: (360) 407- 6247
E-mail: stee461@ecy.wa.gov

Public Involvement Contact:

Meg Bommarito
Phone: (360) 407- 6255
E-mail: mbom461@ecy.wa.gov

Document Review Locations

Olympia Timberland Library
313 8th Avenue SE
Olympia, WA 98501
Phone: (360) 352-0595

**WA Department of Ecology
Southwest Regional Office**
300 Desmond Drive SE
Lacey, WA 98503

By appointment only:
Contact Debbie Nelson,
dene461@ecy.wa.gov or
(360) 407-6365

Ecology's Toxics Cleanup Website

[http://www.ecy.wa.gov/programs/
tcp/sites/eastBayRedev/
eastBayRedev_hp.htm](http://www.ecy.wa.gov/programs/tcp/sites/eastBayRedev/eastBayRedev_hp.htm)

Facility Site ID# 5785176



- **Attend** a public meeting on April 1, 2009 at the Washington Middle School from 6:30–8:30 pm. For more information, see page three.

What Happens Next?

- Ecology will review and consider comments received during the comment period and make changes to the work plans if appropriate.
- The Port will implement the Interim Action (removal of contaminated soil) during construction of roads and utility lines.
- Remedial Investigation work began in November 2008 and is ongoing.
- When the requirements of this Agreed Order are completed Ecology will negotiate a second Agreed Order or Consent Decree with the Port. This legal document will require the Port to complete a Feasibility study and to draft a Cleanup Action Plan.
- Ecology will keep the public involved and informed as this cleanup moves forward. Comment periods will be held at various points in the process.

Site Background

The site, generally located at 315 Jefferson Street NE, was used for timber-related industries from the late 1880s until 1968. Previous users included sawmill, planing mill, shingle mill and plywood manufacturers. From 1968 to the present, the site was used for commercial and light industrial activities and storage.

Historic activities at the site caused soil and groundwater contamination. Total petroleum hydrocarbons (TPHs), semi-volatile organic compounds (SVOCs), polychlorinated biphenyls (PCBs), dioxins and furans and metals have been detected at levels above Model Toxics Control Act (MTCA) standards in soil. TPHs, SVOCs, PCBs and metals have been detected in groundwater above MTCA standards.

The Port of Olympia entered the Voluntary Cleanup Program in January 2007. The site was transferred to a formal cleanup process in February 2008 to expedite the cleanup and to ensure Ecology oversight.

In October 2008, the Port and Ecology entered into an Agreed Order to begin cleanup of the site. The Agreed Order requires the Port to complete an Interim Action and Remedial Investigation. In addition, the Port is required to complete Remedial Investigation and Interim Action work plans and reports.

Opportunities for Public Involvement for this Agreed Order

Public comment period for **Agreed Order**

Interim Action and Remedial Investigation Work Plans Developed

WE ARE HERE

Public comment period and public meeting for the **Interim Action and Remedial Investigation Work Plans and SEPA documents**

Interim Action performed as site infrastructure construction begins. Remedial Investigation completed.

Public comment period for **Remedial Investigation Report and Interim Action Report**



YOU ARE INVITED TO A PUBLIC OPEN HOUSE!

Please join us April 1 to find out more about the proposed cleanup activities. Staff will be available throughout the evening for one-on-one discussions and to answer your questions.

Date: April 1, 2009

Time 6:30 – 8:30 p.m.

Location: Washington Middle School
(3100 Cain Rd SE, Olympia)

Agenda:

6:30 – 7:00 pm	Open House
7:00 – 8:00 pm	Presentation Question and Answer Session
8 – 8:30 pm	Open House

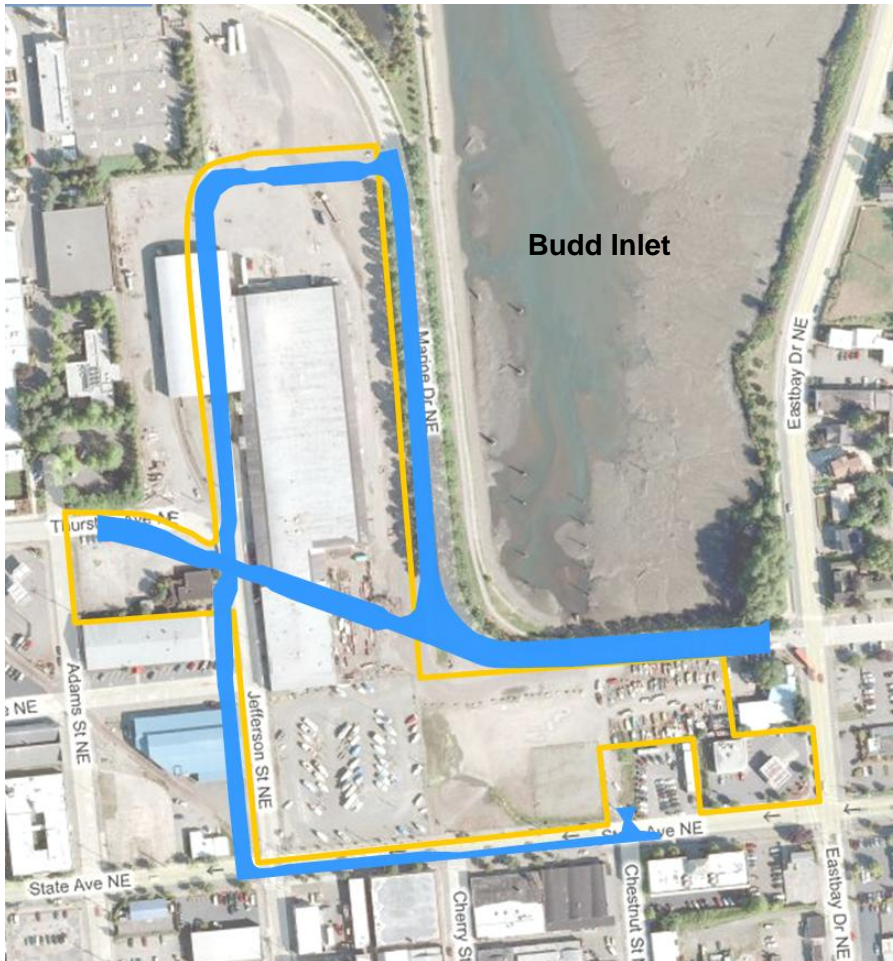
NEED MORE INFORMATION?

If you have questions or need information about the individual redevelopment projects, please contact the Port of Olympia at (360) 528-8000 or inquiries@portofolympia.com



For more information about the State Environmental Policy Act (SEPA), visit <http://www.ecy.wa.gov/programs/sea/sepa/e-review.html>

For more information about the National Pollutant Discharge Elimination Permit, visit <http://www.ecy.wa.gov/biblio/0510008.html>

Approximate Location of Interim Action



Key

-  = Approximate area of soil excavation
-  = Approximate project boundary





DEPARTMENT OF
ECOLOGY
State of Washington

PO Box 47775
Olympia, WA 98504-7775

East Bay Redevelopment Olympia, WA

Work Plans are Now Available for Public Comment

Public Comment Period:
March 16 - April 16, 2009

Public Meeting:
April 1, 2009 from 6:30 – 8:30 pm
Washington Middle School
(3100 Cain Rd SE, Olympia)

Facility Site ID #5785176

If you need this publication in an alternative format, call (360) 407-6300. Persons with hearing loss, call 711 for Washington Relay Service. Persons with speech disability call (877) 833-6341.

