

SAND POINT TIME CRITICAL REMOVAL ACTION CLEANUP PLAN

Cleanup will be conducted in a manner that is protective of worker and public health and safety, and post-action surveys will be performed to confirm objectives are met. All low-level radiological waste encountered during cleanup will be disposed at a licensed facility.

Building 2

- Removal of contamination on second floor
- Removal of piping below building concrete floor
- Post-action surveys

Soil Areas and Catch Basins

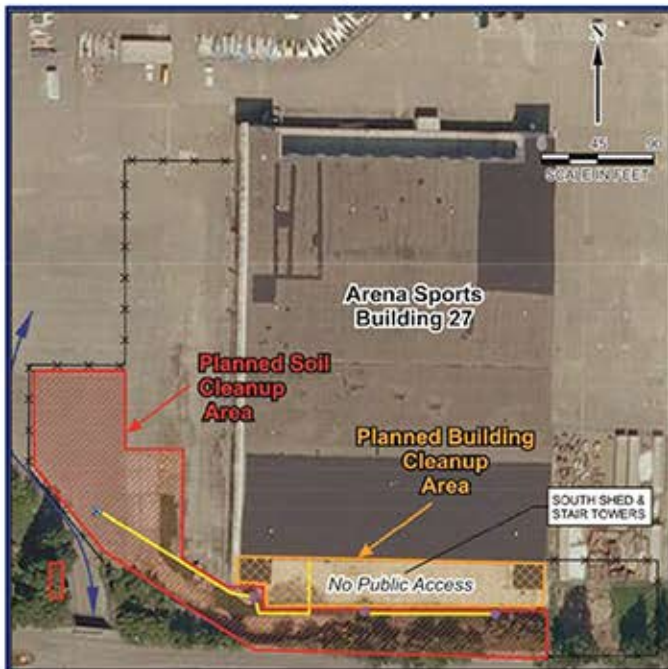
- Excavation and backfill of soil areas
- Removal and replacement of catch basins and limited piping south of Building 27
- Post-action surveys



Aerial view of Buildings 2 and 12.

Building 27

- Removal of radiological contaminated building materials within the South Shed
- Post-action surveys
- Completion of demolition and removal of South Shed
- Restoration of south-facing wall to historic standards



Aerial view of Building 27.

