

### Consent Decree Available for Public Comment

The Department of Ecology (Ecology) and the Port of Ridgefield (port) are entering into a Consent Decree. The port will, under this court-authorized agreement, clean up the former Pacific Wood Treating (PWT) site. PWT treated wood at 111 West Division Street in Ridgefield. This is the Lake River Industrial Site (LRIS) (see map, page 3).

### Ecology Wants Your Comments!

Ecology is making the following available for review and comment:

- **Remedial Investigation (RI)**— determines the nature and extent of the contamination.
- **Feasibility Study (FS)** —presents and compares cleanup options.
- **Cleanup Action Plan (CAP)**— describes the recommended cleanup and how it meets Ecology’s standards.
- **Consent Decree**—defines the port’s liability for the cleanup
- **State Environmental Policy Act (SEPA) review**—describes the potential environmental impact of the cleanup work.

Ecology is accepting comments on the RI, FS and draft CAP from **July 25—August 23, 2013**. The SEPA comment period is **July 25—August 8**. The box to the right shows document review locations and where to submit comments.

### Proposed Cleanup Plan

Contamination remains at the site. To prevent harm to human health or the environment, a soil cap will cover the site to contain the remaining contamination. The cleanup plan also bans the use of groundwater for drinking purposes.

The following table shows the status of the port-owned properties to be capped (see map, page 3):

Site	Status
LRIS	Completed
Railroad Avenue	Completion in fall 2013
Railroad Overpass	Completed after the overpass is built
Port-owned Marina	Asphalt cap in place

### Comments Accepted

July 25 through August 23, 2013

SEPA Comments: July 25 through August 8, 2013

### Submit Comments and Technical Questions to:

Craig Rankine, Site Manager  
WA Department of Ecology  
Vancouver Field Office  
2108 Grand Blvd.  
Vancouver, WA 98661  
Phone: (360) 690-4795  
Craig.Rankine@ecy.wa.gov

### Public Involvement:

Michael Bergman  
Phone: (360) 407-0067  
Michael.Bergman@ecy.wa.gov

### DOCUMENT REVIEW LOCATIONS

**Ridgefield Library**  
210 N. Main Avenue  
Ridgefield, WA 98642  
(360) 887-8281

**WA Department of Ecology  
Southwest Regional Office**  
300 Desmond Drive SE  
Lacey, WA 98503

By appointment only:

Contact Susie Baxter,  
Susan.Baxter@ecy.wa.gov or  
(360) 407-6365

### Ecology’s Toxics Cleanup Website

<https://fortress.wa.gov/ecy/gsp/Sitepage.aspx?csid=3020>

Facility Site ID #: 1019

### Site History

From 1964-1993, Pacific Wood Treating (PWT) operated on the port's waterfront property in Ridgefield. PWT pressure treated wood products with many toxic chemicals. These chemicals don't easily break down. They make the cleanup more expensive, as did contaminating nearby Lake River and Clarty lake.

In 1993, PWT declared bankruptcy. The port found contamination in soil, groundwater and sediment inside and outside of the LRIS where PWT operated.

In 1996 and 2001, the port entered into agreements with Ecology to investigate and begin cleanup at the LRIS. The port has done several interim (partial) cleanups in this area.

Under the Cleanup Action Plan, the port will do further cleanup in the following areas (shown on page 3):

- Port-owned properties
- Carty Lake Unit sediment.
- Lake River sediment.

### Interim Cleanups

From 1996 to 2012, the port did several cleanups at the LRIS. It removed:

- 24,800 gallons of liquid contamination.
- 1,545,000 pounds of contaminated sludge.
- Contamination from over 144 million gallons of groundwater.

The port also dug up and removed 5,392 cubic yards of contaminated soil.

### Site Contamination

PWT's wood treating chemicals impacted soil, groundwater and sediment. The port monitors groundwater to make sure that contamination is not leaving the site. Monitoring shows that the contamination is decreasing over time.

The port also removed the old stormwater system and put in new drains and piping.

### Future Cleanup and Development

#### Sediment Cleanup

PWT contaminated sediment in both Lake River and Carty Lake with wood-treating chemicals. In 2014, the port will dredge this sediment and cover dredged areas with clean sand.

#### Off-Property Investigation and Cleanup

The port discovered soil contamination in a Ridgefield residential area and on the McCuddy Marina property (see page 3). The port will do more investigation to define the extent of contamination. Future agreements between Ecology and the port will cover both investigation and cleanup.

#### Redevelopment

The port has plans in place for developing the LRIS site for commercial use and public recreation. The name of the project is Miller's Landing. This plan will return 33.5 acres of waterfront property to productive use.

#### Cleanup Funding

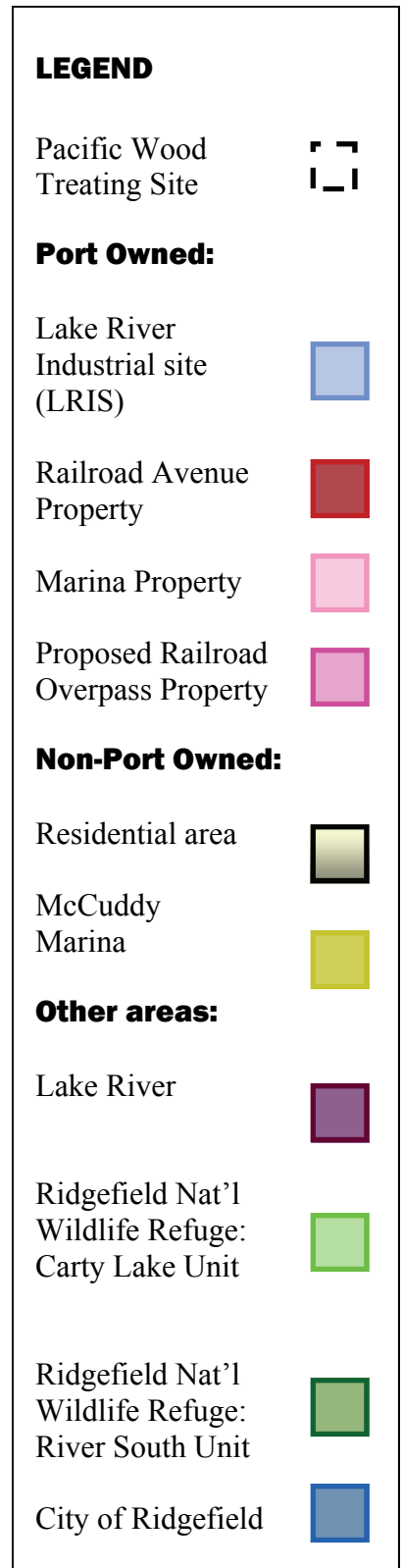
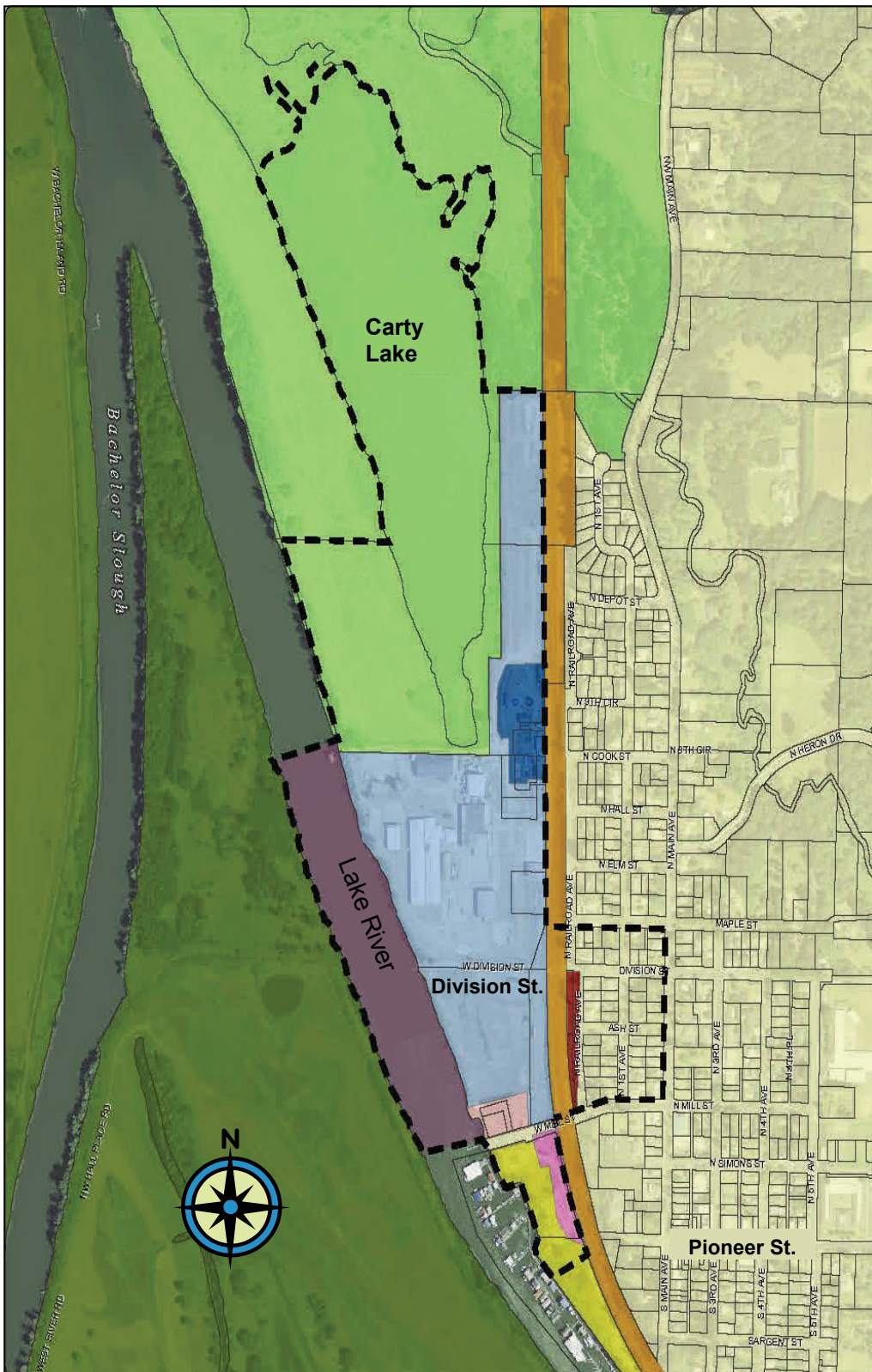
Ecology provided both grants and loans to the port. More than \$70 million has been spent on the cleanup to date. Ecology and the port continue PWT cleanup work together on cleanups that promote economic redevelopment.

### Next Steps

Ecology will review and respond to all comments received during the public comment period. The Cleanup Action Plan will then be finalized. The port will do the final cleanup work.



Pacific Wood Treating—Port of Ridgefield Cleanup Areas





DEPARTMENT OF  
**ECOLOGY**  
State of Washington

PO Box 47775

Olympia, WA 98504-7775



Please recycle.

## **Pacific Wood Treating Ridgefield, WA**

**Consent Decree and Draft Cleanup  
Plan Available for Public Comment**

**Public Comment Period**

**July 25 through August 23, 2013**

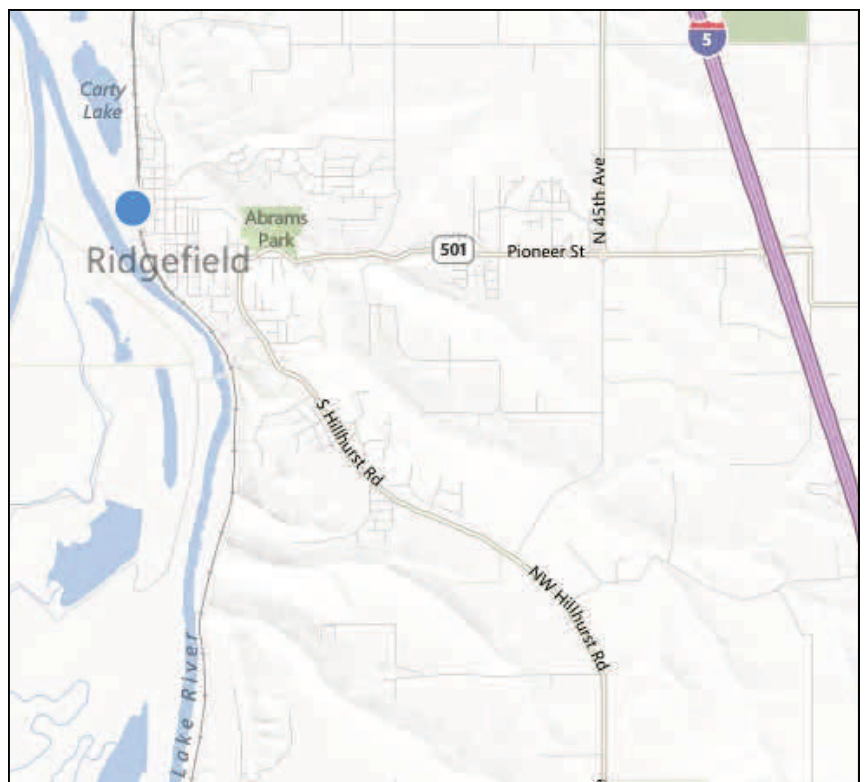
**SEPA Documents Comment Period**

**July 25 through August 8, 2013**

Facility Site ID #: 1019

If you need this publication in a format for the visually impaired, call reception at (360) 407-6300.

Persons with hearing loss, call 711 for Washington Relay Service. Persons with a speech disability call 877-833-6341.



Lake River Industrial site, 111 West Division St., Ridgefield