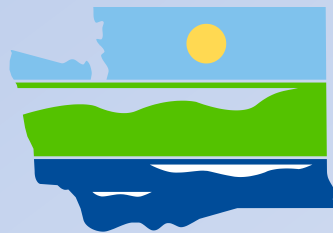


Whidbey Marine & Auto Supply

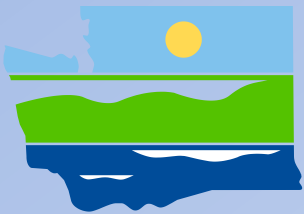
Site Cleanup Overview

August 12, 2013



DEPARTMENT OF
ECOLOGY
State of Washington

What agencies are involved



DEPARTMENT OF
ECOLOGY
State of Washington



Island County
Public Health



Washington State Department of
Health

www.doh.wa.gov
a healthy dose of
information

Ecology's Cleanup Law

- In 1989, an innovative, citizen-mandated toxic waste cleanup law went into effect in Washington State, establishing a process to clean up contaminated sites.
- Passed by voters as Initiative 97, this law is known as the Model Toxics Control Act (MTCA), chapter 70.105D RCW.

Model Toxics Control Act

- Its purpose is to identify, investigate, and clean up sites where releases of hazardous substances have come to be located.
- MTCA requires property owners or other liable persons to clean up releases.
- It defines the role of Ecology and encourages public involvement and input in the decision making process.

Processes for cleanup

- Agreed Order – Administrative
- Consent Decree – Filed in Court signed by a judge and settles liability
- Prospective Purchaser Consent Decree - Transfers liability
- Enforcement Order
- Voluntary Cleanup Program

Voluntary Cleanup Program

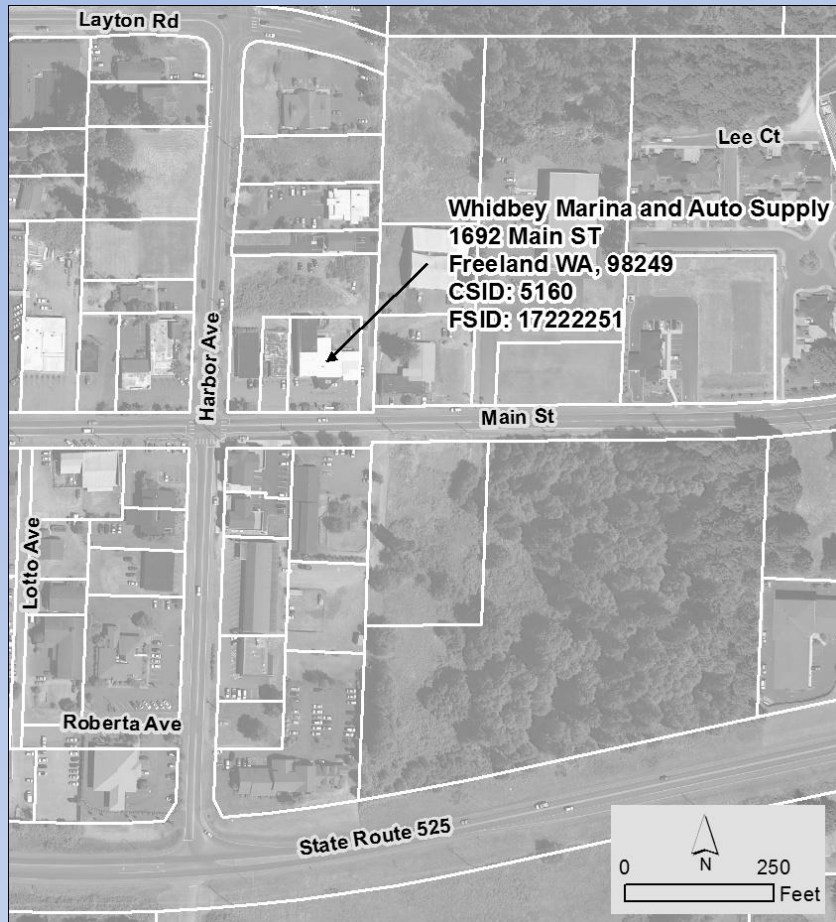
Under the VCP, parties can clean up contaminated sites to meet the state cleanup standards (Model Toxics Control Act).

Ecology provides technical and regulatory review assistance.

Ecology reviews the work and determines if it is protective in accordance with MTCA regulations.

The ultimate goal is a no further action letter.

Site Background



- Whidbey Marine & Auto supply operated as a service station from 1967 to 2008
- Four underground storage tanks
- Site release discovery, 2005

Area Groundwater

- Upper perched aquifer 60 feet deep on top silty layer. Groundwater flow direction to west southwest.
- Lower sea level aquifer 100 feet deep. Groundwater flow direction to the south southeast.
- Aquifers medium to coarse sand



Contaminants of Concern:

- Gasoline
- Diesel
- Benzene
- Release to soil and groundwater



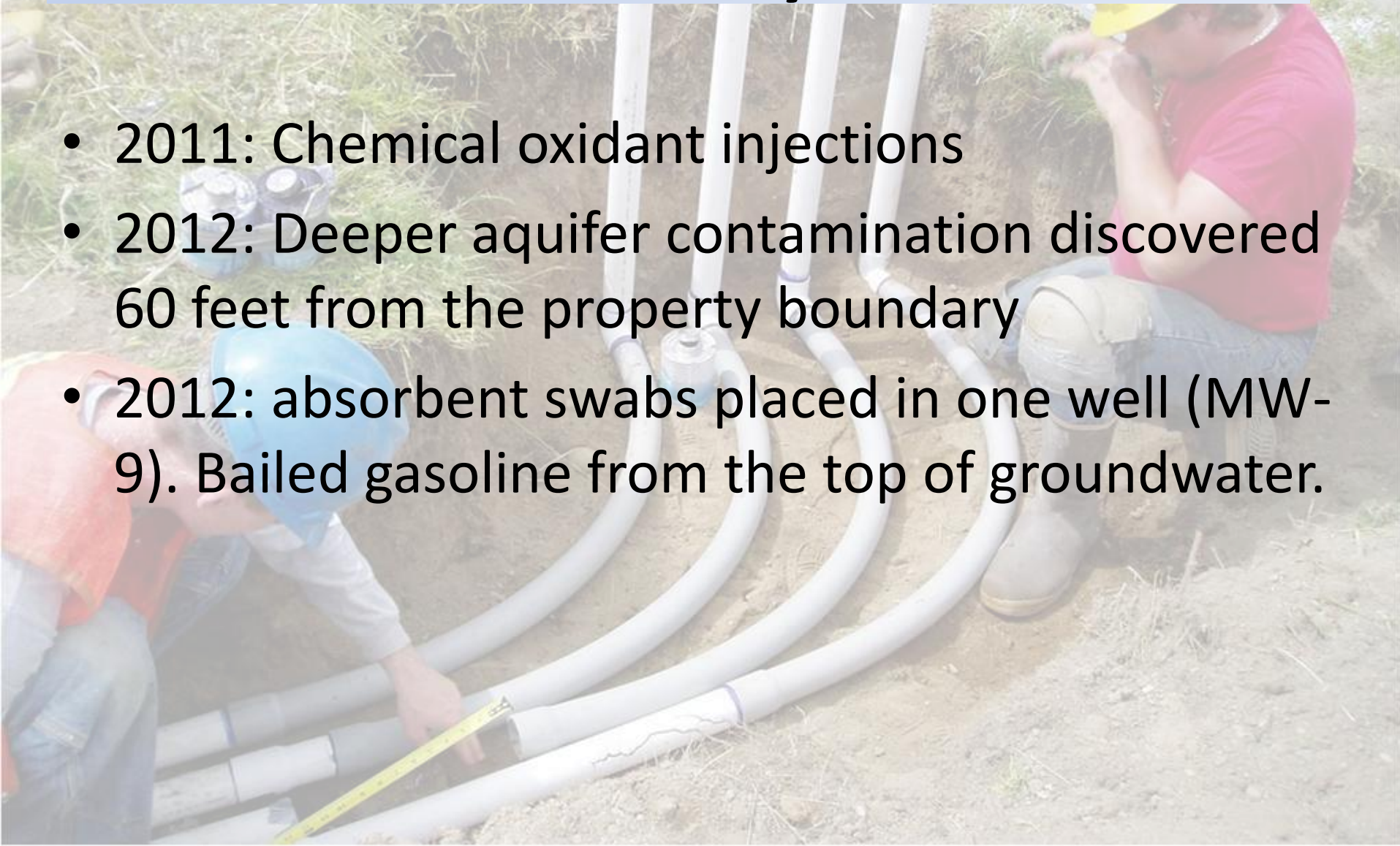
What's been done since Site discovery?

- 2005: 3,000 gallon leak reported in Tank #2
- 2006: Installed soil vapor extraction system
- 2008: Gas station closed
- 2010: Soil vapor extraction system stopped. 1,800 gallons gasoline vapor removed
- 2011: All tanks, piping and fuel dispensers removed



What's been done since Site discovery?

- 2011: Chemical oxidant injections
- 2012: Deeper aquifer contamination discovered 60 feet from the property boundary
- 2012: absorbent swabs placed in one well (MW-9). Bailed gasoline from the top of groundwater.



Current Events

- VCP review continues
- Coordinating planning by stakeholders
 - Freeland Water District,
 - Island County Health District,
 - Washington State Department of Health,
 - Environmental Consultant,
 - Washington State Department of Ecology

Next Steps:

Investigate groundwater contamination

- Obtain access agreements and permits
- Install additional groundwater monitoring wells between Freeland Water District wells and the property
- Further assess groundwater flow direction
- Determine extent of plume in deeper aquifer
- Ensure no impacts to the drinking water wells
- Plan for cleanup options

How to stay informed

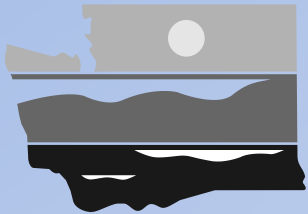
Ecology's Whidbey Marine and Auto Supply Website:

<https://fortress.wa.gov/ecy/gsp/Sitepage.aspx?csid=5610>

Louise Bardy, Voluntary Cleanup Program Unit Supervisor

Phone: (425) 649-7209

Email: lbar461@ecy.wa.gov



DEPARTMENT OF
ECOLOGY
State of Washington

Diane Escobedo, Site Manager

Phone: (425) 649-7097

Email: desc461@ecy.wa.gov

Eugene Freeman, Site Hydrogeologist

Phone: (425) 649-7191

Email: eufr461@ecy.wa.gov



Doug Kelly, Hydrogeologist

Phone: (360) 678-7885

Email: d.kelly@co.island.wa.us

Hollow Stem Auger

