

SEATTLE
TACOMA
PORTLAND
STOCKTON
RENO
RICHMOND
LOS ANGELES



T
E
N
T
O
N
E
I
T
S
T
I
M
E

TIME OIL CO.

2737 WEST COMMODORE WAY
P.O. BOX 24447

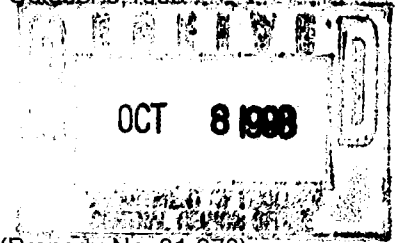
SEATTLE, WA 98199-1233
SEATTLE, WA 98124-0447

PHONE 285-2400
CABLE ADDRESS: TIMOIL
(FAX) 206-283-8036

JACKPOT 070
4106

Ms. Debra Kroon
Washington State Department of Ecology
Central Region Office
15 West Yakima Avenue, Suite 200
Yakima, Washington 98209-3401

October 6, 1998



RE: Soil Sampling Results/Confirmation of Release at
Grandview Market, 100 East Wine Country Road, Grandview, Washington (Property No. 01-070)

Dear Ms. Kroon:

During site upgrade activities at the above-referenced property in September 1998, soils containing a hydrocarbon odor were encountered. Accordingly, several samples were collected by a representative of Time Oil Co. and submitted to an analytical laboratory to assist in determining if soils containing hydrocarbons at concentrations exceeding MTCA Method A Cleanup Levels were present onsite. A summary of sampling techniques and results follows.

Project Background:

In order to comply with 1998 underground storage tank standards, Time Oil implemented site upgrade activities on September 10, 1998. These activities included the installation of a cathodic protection system to protect the tank system from corrosion. Installation of a cathodic protection system requires the placement of anodes which are used to impress a subsurface electrical current which makes the tank system the cathode of an electrochemical cell.

Installation of a cathodic protection system involves advancing a boring to approximately 15 feet below ground surface with a drill rig, placing an anode within the resulting boring, and packing the remaining annular space of the boring with dielectric material upon removal of the auger flights. The cathodic protection system for the subject site required the installation of 6 anodes.

During the installation of the anodes, a representative of Time Oil noticed that drill cuttings from three of the borings (CP1, CP3, and CP5) contained a hydrocarbon odor. Accordingly, grab soil samples were collected from the drill cuttings of the three borings and submitted to an analytical laboratory for characterization. A site map showing the approximate location of each cathodic protection boring is attached as Figure 1.

Soil Sampling:

Because the primary purpose of drilling the borings was to install cathodic protection anodes, typical environmental sampling protocols were not employed in order to avoid impacting the anode installation schedule. Grab soil samples were collected immediately following retrieval of the lowermost auger sections from CP1, CP3, and CP5. Soil samples recovered in this manner are likely representative of soil conditions at a depth of approximately 12 to 15 feet below ground surface because they represent the last soil section drilled as the augers were advanced to the total depth of each cathodic protection boring.

Upon retrieval of the lowermost auger sections from CP1, CP3, and CP5, samples were recovered by manually scraping soil from the auger flights directly into four-ounce glass sample jars. The jars were packed until full then immediately sealed, labeled, and placed in an iced cooler for temporary storage and transport to the analytical laboratory. Two soil samples were collected from the augers removed from CP1

(1A, 1B), CP3 (2A, 2B), and CP5 (3A, 3B) using this procedure. A Time Oil Co. chain-of-custody form was filled out at the site and remained with the samples until they were delivered to the laboratory.

Soil conditions were not noted during sample collection, and groundwater was apparently not encountered.

Analytical Testing Program and Results:

Each of the soil samples was submitted to North Creek Analytical, Inc. in Bothell, Washington where they were composited to represent each of the potentially impacted borings: Composite 1A-2A (CP1), Composite 1B-2B (CP3), and Composite 1C-2C (CP5). Each composite was initially tested for the presence of hydrocarbons by WTPH-HCID. Because HCID analyses identified diesel- and gasoline-range hydrocarbons in each of the samples, they were further analyzed for diesel- and oil-range contaminants by WTPH-d extended; for gasoline, benzene, toluene, ethylbenzene, and xylenes by WTPH-g with BTEX distinction; and for total lead.

Concentrations of gasoline-range hydrocarbons and/or xylenes exceeding MTCA Method A Cleanup Levels were detected in Composite 1A-1B (800 ppm gasoline and 23.2 ppm xylenes), Composite 2B-2B (748 ppm gasoline and 25.3 ppm xylenes), and Composite 3A-3B (576 ppb gasoline). Composite 1A-1B was also found to contain slightly elevated concentrations of heavy oil-range hydrocarbons (222 ppm). None of the samples contained diesel-range hydrocarbons, benzene, toluene, ethylbenzene, or total lead at concentrations of concern. A summary of analytical results is presented as Table 1 and laboratory results are included as Appendix A

Containment of Drill Cuttings:

Drill cuttings generated during the installation of the cathodic protection anodes were placed into two 55-gallon drums. Upon characterization and profiling, the drums will be transported to an appropriate disposal or recycling facility.

Conclusions:

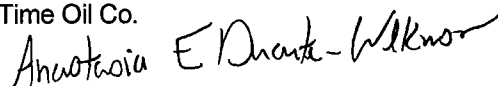
Analytical results collected during the installation of cathodic protection anodes indicate that concentrations of petroleum hydrocarbons exceeding MTCA Method A Cleanup Levels are present in soils located immediately to the north (CP1), west (CP3), and southeast (CP5) of the currently operating underground storage tank system. Field observations did not indicate that impacted soils are present to the south (CP4), east (CP6), or northwest (CP2) of the tank system. It is unknown if groundwater impacts have occurred,

Future Work:

Time intends to initiate a site assessment to determine the extent of hydrocarbon-impacted soils and groundwater (if encountered) associated with the underground storage tanks at the subject site.

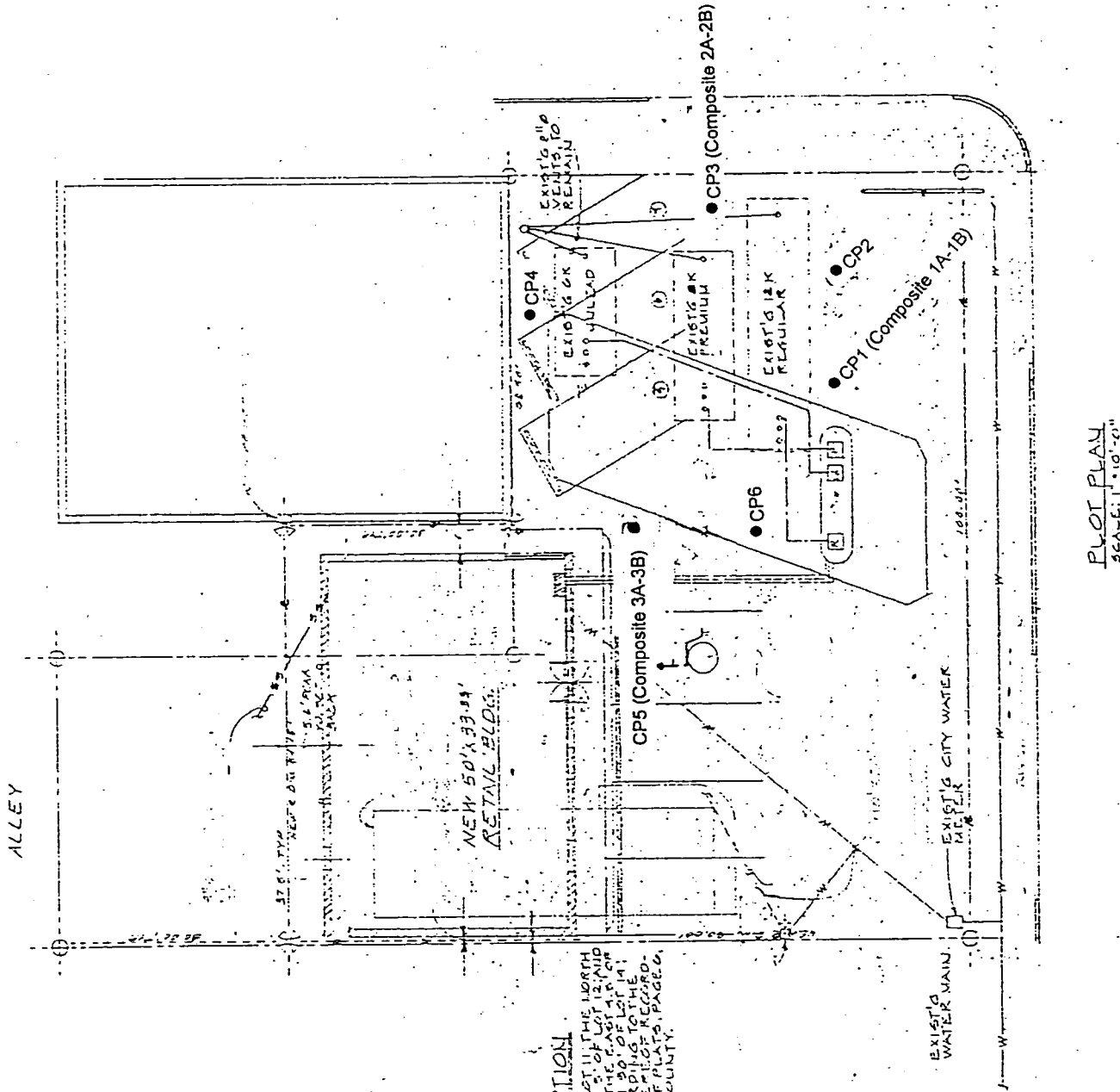
If you have any questions regarding these matters, please do not hesitate to contact me at (206) 286-4495.

Sincerely,
Time Oil Co.



Anastasia E. Duarte-Wilkinson
Environmental Toxicologist

Encl: Table 1 - Summary of Analytical Results
Figure 1 - Site Map
Appendix A - Laboratory Reports



LEGAL DESCRIPTION

THE NORTH 50% OF LOT 11, THE NORTH 60% OF THE WEST 20% OF LOT 12, AND THE SOUTHWEST 20% OF LOT 11, GRANDVIEW, ACCORDING TO THE OFFICIAL PLAT THEREOF RECORDED IN VOLUME 114 OF PLATS, PAGE 6, RECORD OF SAID COUNTY.

PLOT PLAN
SCALE: 1" = 10'-0"

MAIN STREET

● Anode Installation Location (Soil Sample Number)

Figure 1

Location of Cathodic Protection Anode Installation Points
Grandview Market, 100 E. Wine County Rd., Grandview, WA

Time Oil Co. Property No. 01-070

Table 1
**Summary of Analytical Results from Soil Samples Collected During Installation of Cathodic Protection at
 Grandview Market, 100 East Wine Court Road, Grandview, Washington
 Time Oil Property No. 01-070**

Hydrocarbon Identification by WTPH-HCID

	heavy oil- range	diesel-range	gasoline range
Composite 1A-1B	ND	detected	detected
Composite 2A-2B	ND	detected	detected
Composite 3A-3B	ND	detected	detected

Soil Samples analyzed by WTPH-d and WTPH-g with BTEX distinction (in ppm)

	TPH-heavy oil	TPH-diesel	TPH-gasoline	benzene	toluene	ethylbenzene	xylene	total lead
Composite 1A-1B	222	58.4	800	ND	1.36	2.78	23.2	22.1
Composite 2A-2B	137	46.6	748	ND	1.94	3.9	25.3	13.5
Composite 3A-3B	103	60.1	576	ND	0.694	2.34	11.8	13.3
MTCA Method A	200	200	100	0.5	20	40	20	250

APPENDIX A
Laboratory Reports



NORTH CREEK ANALYTICAL

Environmental Laboratory Services

BOTHELL ▪ (425) 420-9200 ▪ FAX 420-9210
SPOKANE ▪ (509) 924-9200 ▪ FAX 924-9290
PORTLAND ▪ (503) 906-9200 ▪ FAX 906-9210

Time Oil Co.
2737 W. Commodore Wy.
Seattle, WA 98199-1233

Project: Grandview Market
Project Number: not provided
Project Manager: Anne Wilkinson

Sampled: 9/10/98
Received: 9/11/98
Reported: 9/24/98 15:21

ANALYTICAL REPORT FOR SAMPLES:

Sample Description	Laboratory Sample Number	Sample Matrix	Date Sampled
COMPOSITE 1A-1B	B809293-02	Soil	9/10/98
Composite of 2A-2B	B809293-04	Soil	9/10/98
Composite of 3A-3B	B809293-06	Soil	9/10/98



NORTH CREEK ANALYTICAL

Environmental Laboratory Services

BOTHELL ■ (425) 420-9200 ■ FAX 420-9210
 SPOKANE ■ (509) 924-9200 ■ FAX 924-9290
 PORTLAND ■ (503) 906-9200 ■ FAX 906-9210

Time Oil Co. 2737 W. Commodore Wy. Seattle, WA 98199-1233	Project: Grandview Market Project Number: not provided Project Manager: Anne Wilkinson	Sampled: 9/10/98 Received: 9/11/98 Reported: 9/24/98 15:21
---	--	--

Hydrocarbon Identification by Washington DOE Method WTPH-HCID North Creek Analytical - Bothell

Analyte	Batch Number	Date Prepared	Date Analyzed	Surrogate Limits	Reporting Limit	Result	Units	Notes*
COMPOSITE 1A-1B				B809293-02		Soil		
Gasoline Range Hydrocarbons	0980396	9/14/98	9/15/98		20.0	DET	mg/kg dry	
Diesel Range Hydrocarbons	"	"	"		50.0	DET	"	
Heavy Oil Range Hydrocarbons	"	"	"		100	ND	"	
Surrogate: 2-FBP	"	"	"	50.0-150		120	%	
Composite of 2A-2B				B809293-04		Soil		
Gasoline Range Hydrocarbons	0980396	9/14/98	9/15/98		20.0	DET	mg/kg dry	
Diesel Range Hydrocarbons	"	"	"		50.0	DET	"	
Heavy Oil Range Hydrocarbons	"	"	"		100	ND	"	
Surrogate: 2-FBP	"	"	"	50.0-150		119	%	
Composite of 3A-3B				B809293-06		Soil		
Gasoline Range Hydrocarbons	0980396	9/14/98	9/15/98		20.0	DET	mg/kg dry	
Diesel Range Hydrocarbons	"	"	"		50.0	DET	"	
Heavy Oil Range Hydrocarbons	"	"	"		100	ND	"	
Surrogate: 2-FBP	"	"	"	50.0-150		112	%	

Joy B Chang, Project Manager



**NORTH
CREEK
ANALYTICAL**
Environmental Laboratory Services

BOTHELL ■ (425) 420-9200 ■ FAX 420-9210
SPOKANE ■ (509) 924-9200 ■ FAX 924-9290
PORTLAND ■ (503) 906-9200 ■ FAX 906-9210

Time Oil Co. 2737 W. Commodore Wy. Seattle, WA 98199-1233	Project: Grandview Market Project Number: not provided Project Manager: Anne Wilkinson	Sampled: 9/10/98 Received: 9/11/98 Reported: 9/24/98 15:21
---	--	--

Gasoline Hydrocarbons (Toluene to Dodecane) and BTEX by WTPH-G and EPA 8021B
North Creek Analytical - Bothell

Analyte	Batch Number	Date Prepared	Date Analyzed	Surrogate Limits	Reporting Limit	Result	Units	Notes*
COMPOSITE 1A-1B				B809293-02		Soil		
Gasoline Range Hydrocarbons	0980641	9/21/98	9/22/98		25.0	800	mg/kg dry	1
Benzene	"	"	"		0.250	ND	"	
Toluene	"	"	"		0.250	1.36	"	
Ethylbenzene	"	"	"		0.250	3.78	"	
Xylenes (total)	"	"	"		0.500	23.2	"	
Surrogate: 4-BFB (FID)	"	"	"	50.0-150		NR	%	2
Surrogate: 4-BFB (PID)	"	"	"	50.0-150		182	"	2
Composite of 2A-2B				B809293-04		Soil		
Gasoline Range Hydrocarbons	0980641	9/21/98	9/22/98		50.0	748	mg/kg dry	1
Benzene	"	"	"		1.00	ND	"	3
Toluene	"	"	"		0.500	1.94	"	
Ethylbenzene	"	"	"		0.500	3.90	"	
Xylenes (total)	"	"	"		1.00	25.3	"	
Surrogate: 4-BFB (FID)	"	"	"	50.0-150		NR	%	2
Surrogate: 4-BFB (PID)	"	"	"	50.0-150		169	"	2
Composite of 3A-3B				B809293-06		Soil		
Gasoline Range Hydrocarbons	0980641	9/21/98	9/22/98		50.0	576	mg/kg dry	1
Benzene	"	"	"		0.500	ND	"	
Toluene	"	"	"		0.500	0.694	"	
Ethylbenzene	"	"	"		0.500	2.34	"	
Xylenes (total)	"	"	"		1.00	11.8	"	
Surrogate: 4-BFB (FID)	"	"	"	50.0-150		NR	%	2
Surrogate: 4-BFB (PID)	"	"	"	50.0-150		182	"	2



**NORTH
CREEK
ANALYTICAL**
Environmental Laboratory Services

BOTHELL ■ (425) 420-9200 ■ FAX 420-9210
SPOKANE ■ (509) 924-9200 ■ FAX 924-9290
PORTLAND ■ (503) 906-9200 ■ FAX 906-9210

Time Oil Co. 2737 W. Commodore Wy. Seattle, WA 98199-1233	Project: Grandview Market Project Number: not provided Project Manager: Anne Wilkinson	Sampled: 9/10/98 Received: 9/11/98 Reported: 9/24/98 15:21
---	--	--

**Diesel Hydrocarbons (C12-C24) and Heavy Oil (C24-C40) by WTPH-D (extended)
North Creek Analytical - Bothell**

Analyte	Batch Number	Date Prepared	Date Analyzed	Surrogate Limits	Reporting Limit	Result	Units	Notes*
COMPOSITE 1A-1B				B809293-02			Soil	
Diesel Range Hydrocarbons	0980602	9/18/98	9/21/98		10.0	222	mg/kg dry	
Heavy Oil Range Hydrocarbons	"	"	"		25.0	58.4	"	
Surrogate: 2-FBP	"	"	"	50.0-150		96.8	%	
Composite of 2A-2B				B809293-04			Soil	
Diesel Range Hydrocarbons	0980602	9/18/98	9/21/98		10.0	137	mg/kg dry	
Heavy Oil Range Hydrocarbons	"	"	"		25.0	46.6	"	
Surrogate: 2-FBP	"	"	"	50.0-150		122	%	
Composite of 3A-3B				B809293-06			Soil	
Diesel Range Hydrocarbons	0980602	9/18/98	9/21/98		10.0	103	mg/kg dry	
Heavy Oil Range Hydrocarbons	"	"	"		25.0	60.1	"	
Surrogate: 2-FBP	"	"	"	50.0-150		107	%	

Joy B Chang, Project Manager



NORTH CREEK ANALYTICAL

Environmental Laboratory Services

BOTHELL ▪ (425) 420-9200 ▪ FAX 420-9210
 SPOKANE ▪ (509) 924-9200 ▪ FAX 924-9290
 PORTLAND ▪ (503) 906-9200 ▪ FAX 906-9210

Time Oil Co.
 2737 W. Commodore Wy.
 Seattle, WA 98199-1233

Project: Grandview Market
 Project Number: not provided
 Project Manager: Anne Wilkinson

Sampled: 9/10/98
 Received: 9/11/98
 Reported: 9/24/98 15:21

Total Metals by EPA 6000/7000 Series Methods North Creek Analytical - Bothell

Analyte	Batch Number	Date Prepared	Date Analyzed	Specific Method	Reporting Limit	Result	Units	Notes*
COMPOSITE 1A-1B				B809293-02			Soil	
Lead	0980580	9/17/98	9/18/98	EPA 6020	0.500	22.1	mg/kg dry	
Composite of 2A-2B				B809293-04			Soil	
Lead	0980580	9/17/98	9/18/98	EPA 6020	0.500	13.5	mg/kg dry	
Composite of 3A-3B				B809293-06			Soil	
Lead	0980580	9/17/98	9/18/98	EPA 6020	0.500	13.3	mg/kg dry	

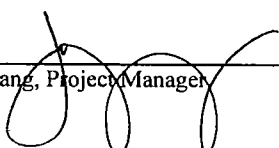


Time Oil Co. 2737 W. Commodore Wy. Seattle, WA 98199-1233	Project: Grandview Market Project Number: not provided Project Manager: Anne Wilkinson	Sampled: 9/10/98 Received: 9/11/98 Reported: 9/24/98 15:21
---	--	--

**Dry Weight Determination
North Creek Analytical - Bothell**

Sample Name	Lab ID	Matrix	Result	Units
COMPOSITE 1A-1B	B809293-02	Soil	71.4	%
Composite of 2A-2B	B809293-04	Soil	84.1	%
Composite of 3A-3B	B809293-06	Soil	84.3	%

North Creek Analytical - Bothell

Joy B Chang, Project Manager


18939 120th Avenue N.E., Suite 101, Bothell, WA 98011-9508
East 11115 Montgomery, Suite B, Spokane, WA 99206-4776
9405 S.W. Nimbus Avenue, Beaverton, OR 97008-7132



**NORTH
CREEK
ANALYTICAL**
Environmental Laboratory Services

BOTHELL ▪ (425) 420-9200 ▪ FAX 420-9210
SPOKANE ▪ (509) 924-9200 ▪ FAX 924-9290
PORTLAND ▪ (503) 906-9200 ▪ FAX 906-9210

Time Oil Co.
2737 W. Commodore Wy.
Seattle, WA 98199-1233

Project: Grandview Market
Project Number: not provided
Project Manager: Anne Wilkinson

Sampled: 9/10/98
Received: 9/11/98
Reported: 9/24/98 15:21

Hydrocarbon Identification by Washington DOE Method WTPH-HCID/Quality Control
North Creek Analytical - Bothell

Analyte	Date Analyzed	Spike Level	Sample Result	QC Result	Reporting Limit Units	Recov. Limits	Recov. %	RPD Limit	RPD %	Notes*
Batch: 0980396		Date Prepared: 9/14/98			Extraction Method: EPA 3510C/600 Series					
Blank		0980396-BLK1								
Gasoline Range Hydrocarbons	9/15/98			ND	mg/kg dry	20.0				
Diesel Range Hydrocarbons	"			ND	"	50.0				
Heavy Oil Range Hydrocarbons	"			ND	"	100				
Surrogate: 2-FBP	"	DET		DET	"	50.0-150	115			


Joy B Chang, Project Manager



NORTH CREEK ANALYTICAL

Environmental Laboratory Services

BOTHELL ■ (425) 420-9200 ■ FAX 420-9210
 SPOKANE ■ (509) 924-9200 ■ FAX 924-9290
 PORTLAND ■ (503) 906-9200 ■ FAX 906-9210

Time Oil Co. 2737 W. Commodore Wy. Seattle, WA 98199-1233	Project: Grandview Market Project Number: not provided Project Manager: Anne Wilkinson	Sampled: 9/10/98 Received: 9/11/98 Reported: 9/24/98 15:21
---	--	--

Gasoline Hydrocarbons (Toluene to Dodecane) and BTEX by WTPH-G and EPA 8021B/Quality Control North Creek Analytical - Bothell

Analyte	Date Analyzed	Spike Level	Sample Result	QC Result	Units	Reporting Limit Recov. Limits	Recov. %	RPD Limit	RPD %	Notes*
Batch: 0980641			Date Prepared: 9/21/98			Extraction Method: EPA 5030B (P/T)				
Blank			0980641-BLK1							
Gasoline Range Hydrocarbons	9/21/98			ND	mg/kg dry	5.00				
Benzene	"			ND	"	0.0500				
Toluene	"			ND	"	0.0500				
Ethylbenzene	"			ND	"	0.0500				
Xylenes (total)	"			ND	"	0.100				
Surrogate: 4-BFB (FID)	"	4.00		5.01	"	50.0-150	125			
Surrogate: 4-BFB (PID)	"	4.00		4.59	"	50.0-150	115			
LCS			0980641-BS1							
Gasoline Range Hydrocarbons	9/21/98	25.0		24.6	mg/kg dry	70.0-130	98.4			
Surrogate: 4-BFB (FID)	"	4.00		5.43	"	50.0-150	136			
Duplicate			0980641-DUP1		B809230-05					
Gasoline Range Hydrocarbons	9/21/98		119	106	mg/kg dry			50.0	11.6	
Surrogate: 4-BFB (FID)	"	10.8		6.19	"	50.0-150	57.3			
Matrix Spike			0980641-MS1		B809295-13					
Benzene	9/21/98	0.587	ND	0.526	mg/kg dry	60.0-140	89.6			
Toluene	"	0.587	ND	0.522	"	60.0-140	88.9			
Ethylbenzene	"	0.587	ND	0.518	"	60.0-140	88.2			
Xylenes (total)	"	1.76	ND	1.62	"	60.0-140	92.0			
Surrogate: 4-BFB (FID)	"	4.70		5.14	"	50.0-150	109			
Surrogate: 4-BFB (PID)	"	4.70		5.29	"	50.0-150	113			
Matrix Spike Dup			0980641-MSD1		B809295-13					
Benzene	9/21/98	0.587	ND	0.549	mg/kg dry	60.0-140	93.5	20.0	4.26	
Toluene	"	0.587	ND	0.548	"	60.0-140	93.4	20.0	4.94	
Ethylbenzene	"	0.587	ND	0.542	"	60.0-140	92.3	20.0	4.54	
Xylenes (total)	"	1.76	ND	1.70	"	60.0-140	96.6	20.0	4.88	
Surrogate: 4-BFB (FID)	"	4.70		4.88	"	50.0-150	104			
Surrogate: 4-BFB (PID)	"	4.70		5.19	"	50.0-150	110			

Joy B Chang, Project Manager



NORTH CREEK ANALYTICAL

Environmental Laboratory Services

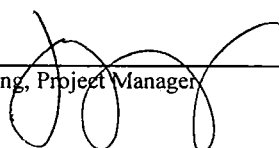
BOTHELL ▪ (425) 420-9200 ▪ FAX 420-9210
 SPOKANE ▪ (509) 924-9200 ▪ FAX 924-9290
 PORTLAND ▪ (503) 906-9200 ▪ FAX 906-9210

Time Oil Co. 2737 W. Commodore Wy. Seattle, WA 98199-1233	Project: Grandview Market Project Number: not provided Project Manager: Anne Wilkinson	Sampled: 9/10/98 Received: 9/11/98 Reported: 9/24/98 15:21
---	--	--

Diesel Hydrocarbons (C12-C24) and Heavy Oil (C24-C40) by WTPH-D (extended)/Quality Control North Creek Analytical - Bothell

Analyte	Date Analyzed	Spike Level	Sample Result	QC Result	Reporting Limit Units	Recov. %	RPD Limit	RPD %	Notes*
Batch: 0980602			Date Prepared: 9/18/98		Extraction Method: EPA 3550B				
Blank									
Diesel Range Hydrocarbons	9/21/98			ND	mg/kg dry	10.0			
Heavy Oil Range Hydrocarbons	"			ND	"	25.0			
Surrogate: 2-FBP	"	11.0		10.8	"	50.0-150	98.2		
LCS									
0980602-BS1									
Diesel Range Hydrocarbons	9/21/98	66.7		81.2	mg/kg dry	60.0-140	122		
Surrogate: 2-FBP	"	11.0		11.2	"	50.0-150	102		
Duplicate									
0980602-DUP1 B809345-04									
Diesel Range Hydrocarbons	9/21/98		149	124	mg/kg dry			50.0	18.3
Heavy Oil Range Hydrocarbons	"		ND	ND	"			50.0	
Surrogate: 2-FBP	"	12.2		11.2	"	50.0-150	91.8		
Duplicate									
0980602-DUP2 B809492-02									
Diesel Range Hydrocarbons	9/19/98		260	236	mg/kg dry			50.0	9.68
Heavy Oil Range Hydrocarbons	"		47.2	42.0	"			50.0	11.7
Surrogate: 2-FBP	"	12.8		12.6	"	50.0-150	98.4		

Joy B Chang, Project Manager





**NORTH
CREEK
ANALYTICAL**
Environmental Laboratory Services

BOTHELL ▪ (425) 420-9200 ▪ FAX 420-9210
SPOKANE ▪ (509) 924-9200 ▪ FAX 924-9290
PORTLAND ▪ (503) 906-9200 ▪ FAX 906-9210

Time Oil Co. 2737 W. Commodore Wy. Seattle, WA 98199-1233	Project: Grandview Market Project Number: not provided Project Manager: Anne Wilkinson	Sampled: 9/10/98 Received: 9/11/98 Reported: 9/24/98 15:21
---	--	--

Total Metals by EPA 6000/7000 Series Methods/Quality Control
North Creek Analytical - Bothell

Analyte	Date Analyzed	Spike Level	Sample Result	QC Result	Reporting Limit Units	Recov. Limits	Recov. %	RPD Limit	RPD %	Notes*
Batch: 0980580			Date Prepared: 9/17/98		Extraction Method: EPA 3050B					
Blank			0980580-BLK1							
Lead	9/18/98			1.43	mg/kg dry	0.500				4
LCS			0980580-BS1							
Lead	9/18/98	25.0		23.9	mg/kg dry	80.0-120	95.6			
Duplicate			0980580-DUP1		B809293-06					
Lead	9/18/98		13.3	13.1	mg/kg dry			20.0	1.52	
Matrix Spike			0980580-MS1		B809293-06					
Lead	9/18/98	27.2	13.3	37.0	mg/kg dry	70.0-130	87.1			



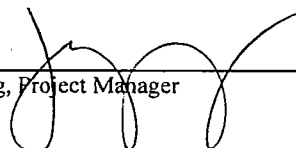
Time Oil Co. 2737 W. Commodore Wy. Seattle, WA 98199-1233	Project: Grandview Market Project Number: not provided Project Manager: Anne Wilkinson	Sampled: 9/10/98 Received: 9/11/98 Reported: 9/24/98 15:21
---	--	--

Notes and Definitions

#	Note
---	------

- 1 The chromatogram for this sample appears to resemble a weathered gasoline range hydrocarbon pattern.
- 2 The surrogate recovery for this sample cannot be accurately quantified due to interference from coeluting organic compounds present in the sample.
- 3 The reporting limit for this analyte has been raised to account for interference from coeluting organic compounds present in the sample.
- 4 Suspect analyte contamination in the blank.
- DET Analyte DETECTED
- ND Analyte NOT DETECTED at or above the reporting limit
- NR Not Reported
- dry Sample results reported on a dry weight basis
- Recov. Recovery
- RPD Relative Percent Difference

Joy B Chang, Project Manager



Quantitation Report

Data File : C:\HPCHEM\1\DATA\I22004.D\FID1A.CH
Acq On : 22 Sep 1998 8:31 am
Sample : b809293-02
Misc : r1, 20 ul, S
IntFile : SURR.E

Vial: 4
Operator: jaz
Inst : GC #2
Multiplr: 5.00

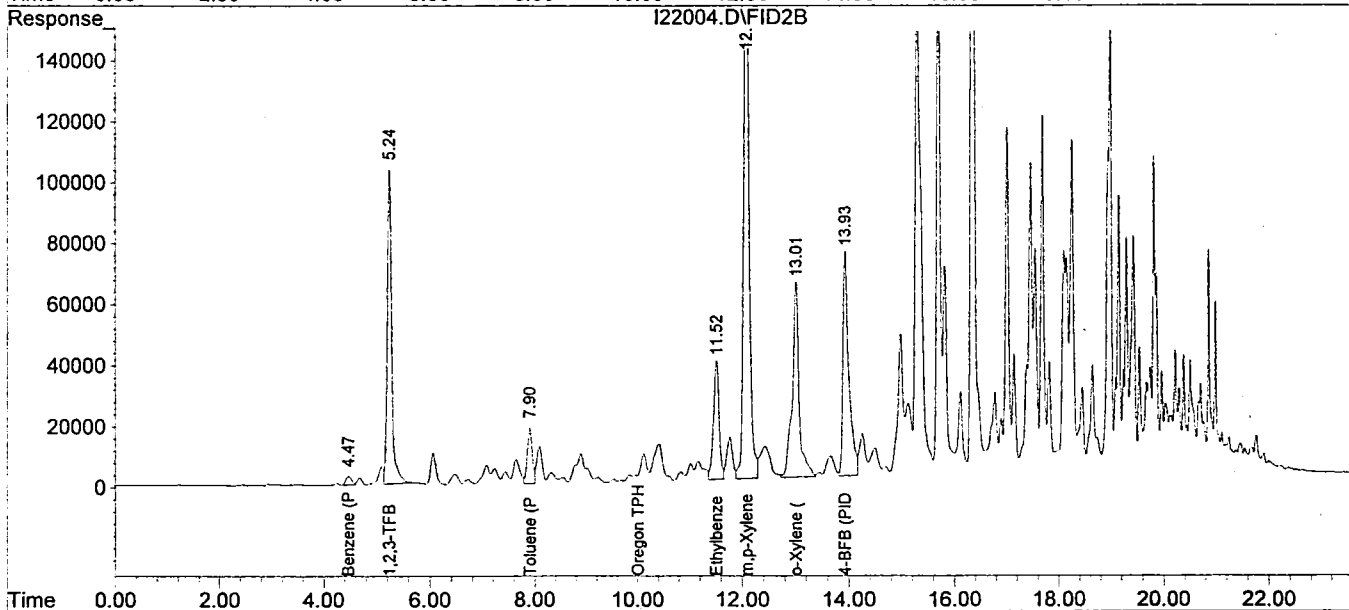
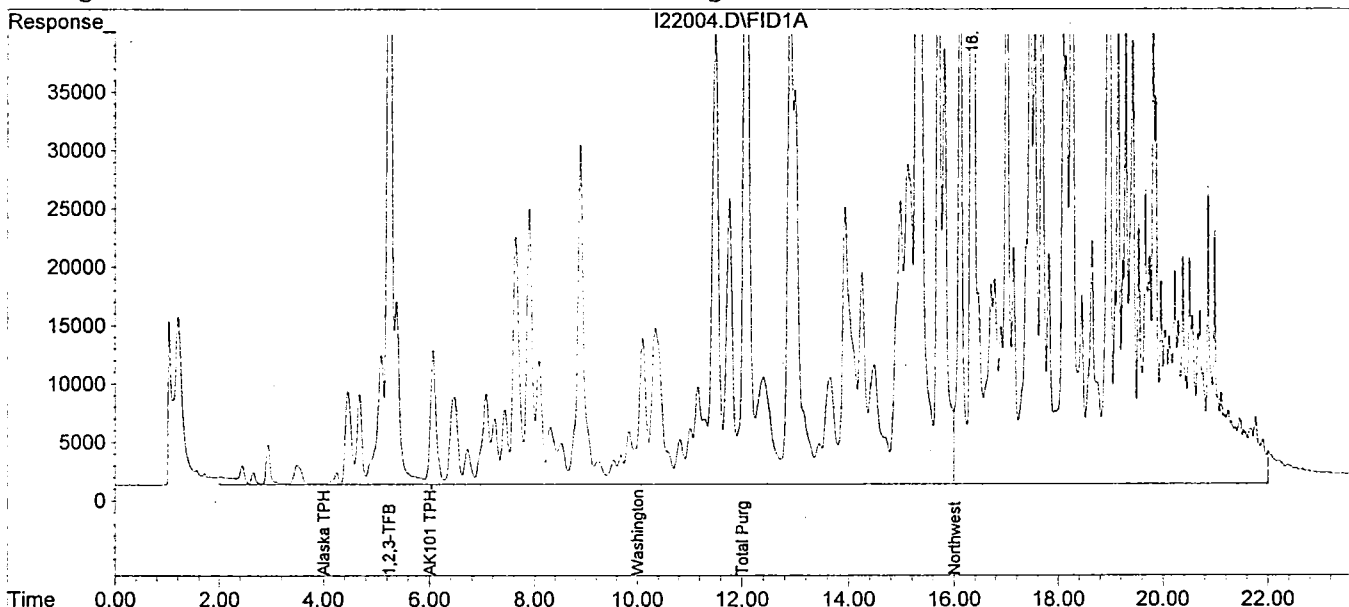
Data File : C:\HPCHEM\1\DATA\I22004.D\FID2B.CH
Acq On : 22 Sep 98 8:31 am
Sample : b809293-02
Misc : r1, 20 ul, S
IntFile : SURR2.E

Vial: 4
Operator: jaz
Inst : GC #2
Multiplr: 5.00

Quant Time: Sep 22 9:37 1998 Quant Results File: TPHG.RES

Quant Method : C:\HPCHEM\1\METHODS\TPHG.M (Chemstation Integrator)
Title : TPH-G Method
Last Update : Tue Sep 22 09:34:47 1998
Response via : Multiple Level Calibration
DataAcq Meth : TPHG.M

Volume Inj. :
Signal #1 Phase :
Signal #1 Info :
Signal #2 Phase :
Signal #2 Info :



Quantitation Report

Data File : C:\HPCHEM\1\DATA\I22005.D\FID1A.CH
Acq On : 22 Sep 1998 9:01 am
Sample : b809293-04
Misc : r1, 10 ul, S
IntFile : SURR.E

Vial: 5
Operator: jaz
Inst : GC #2
Multiplr: 10.00

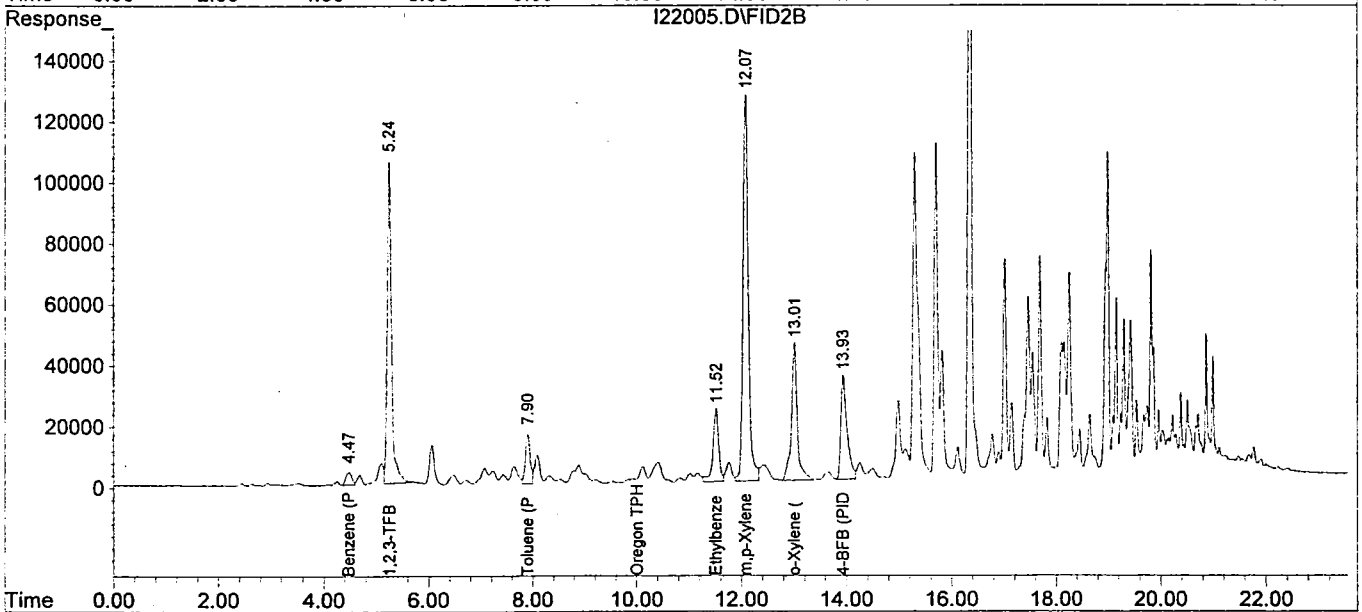
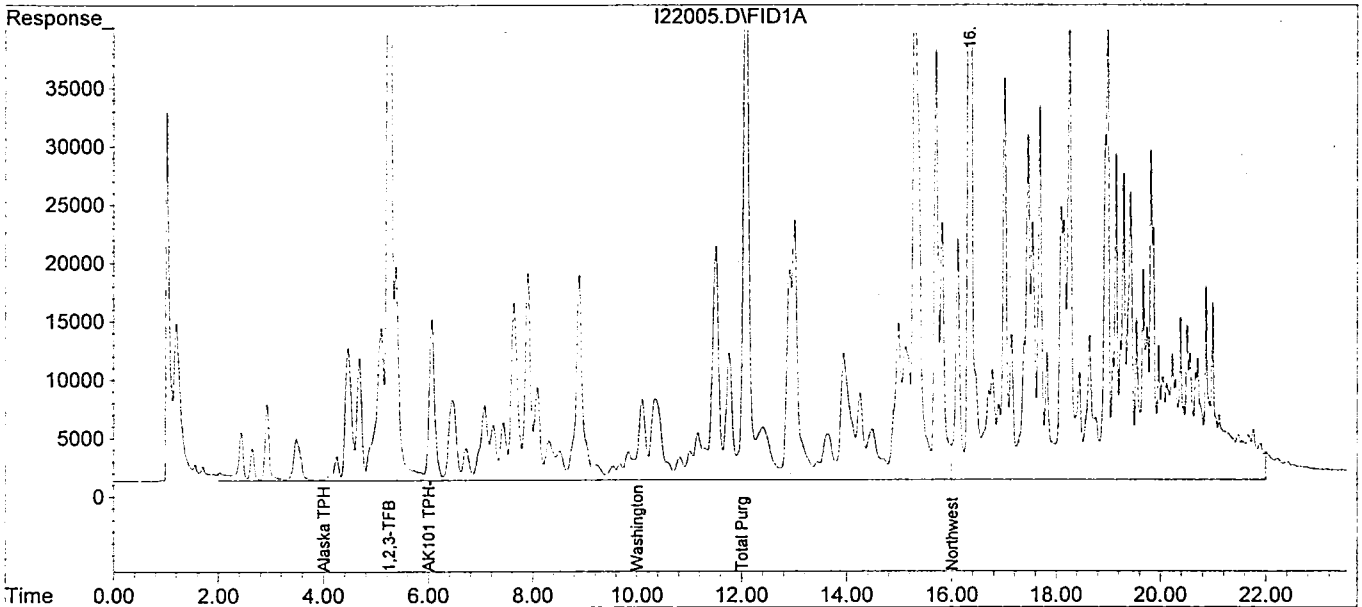
Data File : C:\HPCHEM\1\DATA\I22005.D\FID2B.CH
Acq On : 22 Sep 98 9:01 am
Sample : b809293-04
Misc : r1, 10 ul, S
IntFile : SURR2.E

Vial: 5
Operator: jaz
Inst : GC #2
Multiplr: 10.00

Quant Time: Sep 22 9:38 1998 Quant Results File: TPHG.RES

Quant Method : C:\HPCHEM\1\METHODS\TPHG.M (Chemstation Integrator)
Title : TPH-G Method
Last Update : Tue Sep 22 09:34:47 1998
Response via : Multiple Level Calibration
DataAcq Meth : TPHG.M

Volume Inj. :
Signal #1 Phase : Signal #2 Phase:
Signal #1 Info : Signal #2 Info :



Quantitation Report

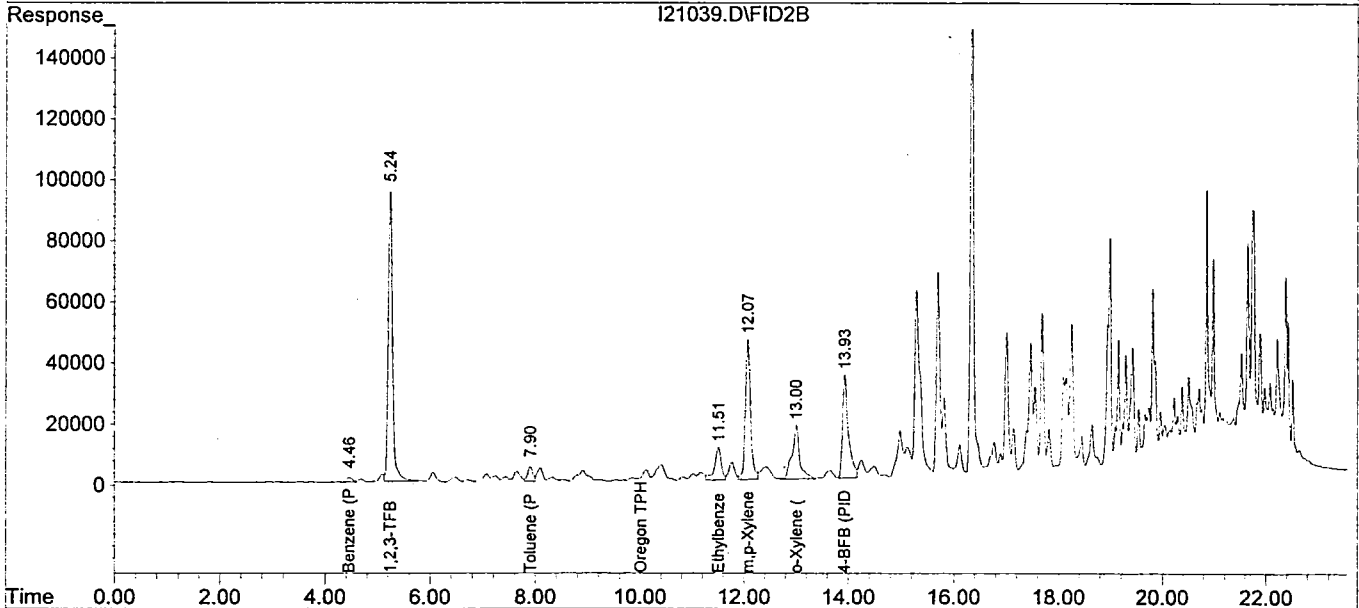
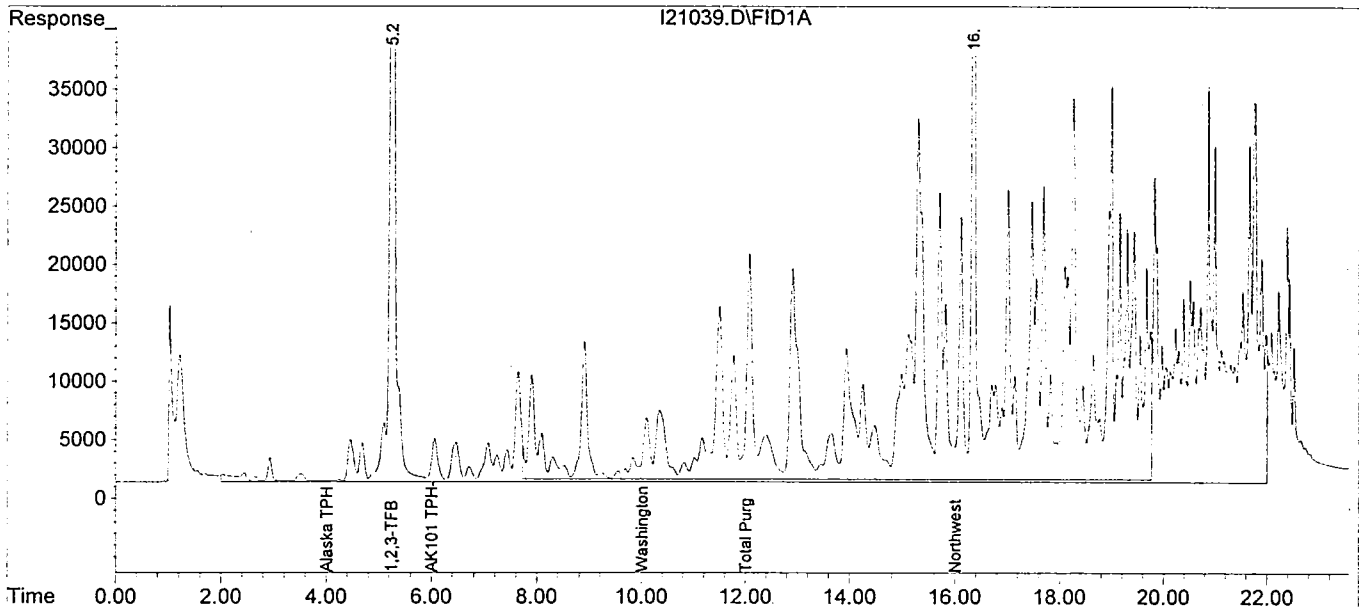
Data File : C:\HPCHEM\1\DATA\092198\I21039.D\FID1A.CH Vial: 39
Acq On : 22 Sep 1998 3:21 am Operator: jaz
Sample : b809293-06 r1 Inst : GC #2
Misc : 10 uL Multiplr: 10.00
IntFile : SURR.E

Data File : C:\HPCHEM\1\DATA\092198\I21039.D\FID2B.CH Vial: 39
Acq On : 22 Sep 98 3:21 am Operator: jaz
Sample : b809293-06 r1 Inst : GC #2
Misc : 10 uL Multiplr: 10.00
IntFile : SURR2.E

Quant Time: Sep 22 7:20 1998 Quant Results File: TPHG.RES

Quant Method : C:\HPCHEM\1\METHODS\TPHG.M (Chemstation Integrator)
Title : TPH-G Method
Last Update : Tue Sep 22 07:18:39 1998
Response via : Multiple Level Calibration
DataAcq Meth : TPHG.M

Volume Inj. :
Signal #1 Phase : Signal #2 Phase:
Signal #1 Info : Signal #2 Info :



Quantitation Report

Data File : C:\HPCHEM\DATA\I15006.D
Acq On : 15 Sep 1998 2:08 pm
Sample : b809293-02
Misc : hs
IntFile : SURR.E
Quant Time: Sep 15 15:04 1998

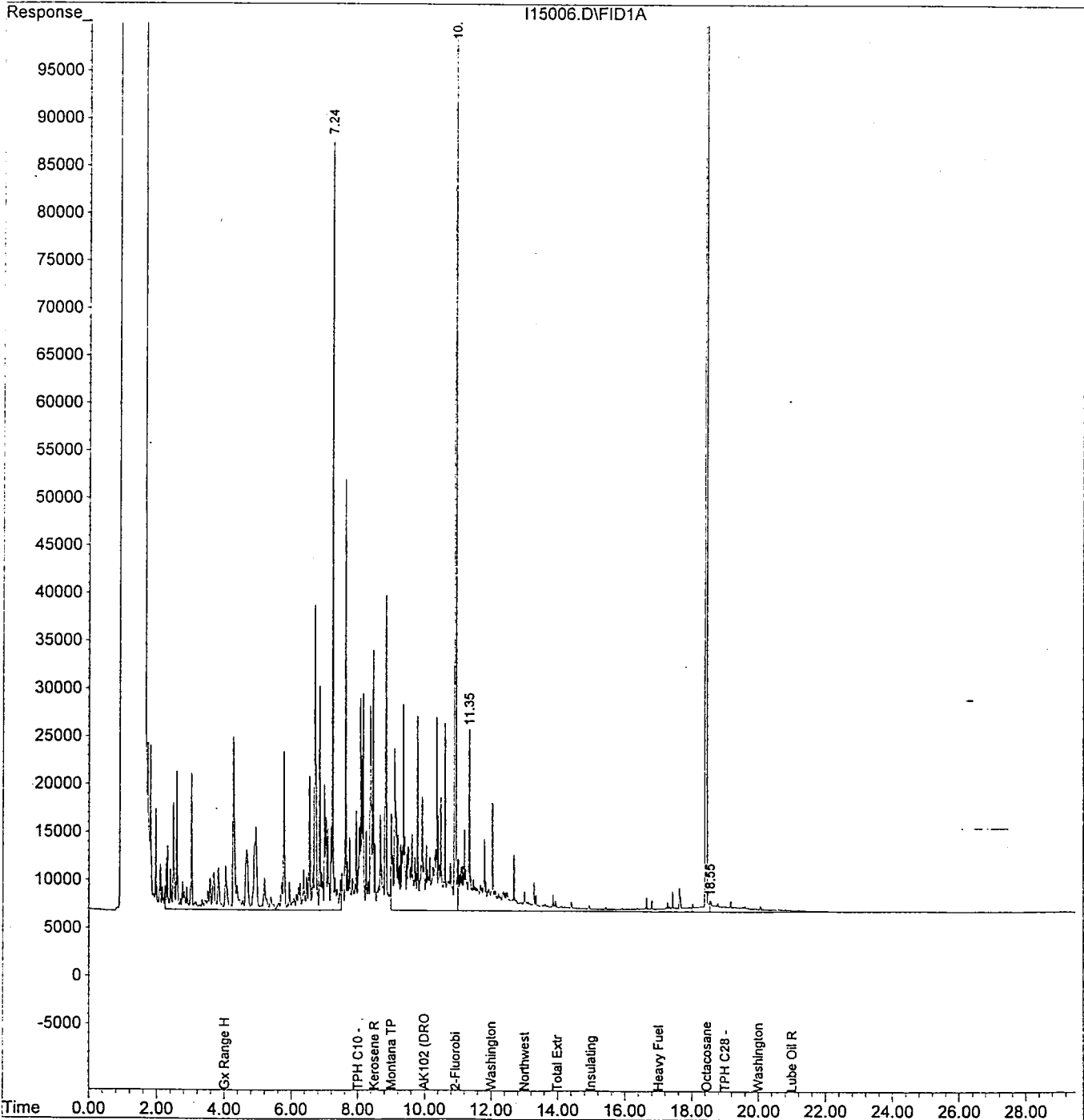
Vial: 5
Operator: CC
Inst : GC #1
Multiplr: 1.00



Quant Results File: TPHD.RES

Quant Method : C:\HPCHEM\1\METHODS\TPHD.M (Chemstation Integrator)
Title : TPH-D Front Method
Last Update : Tue Sep 15 09:32:03 1998
Response via : Multiple Level Calibration
DataAcq Meth : TPHD.M

Volume Inj. :
Signal Phase :
Signal Info :



Quantitation Report

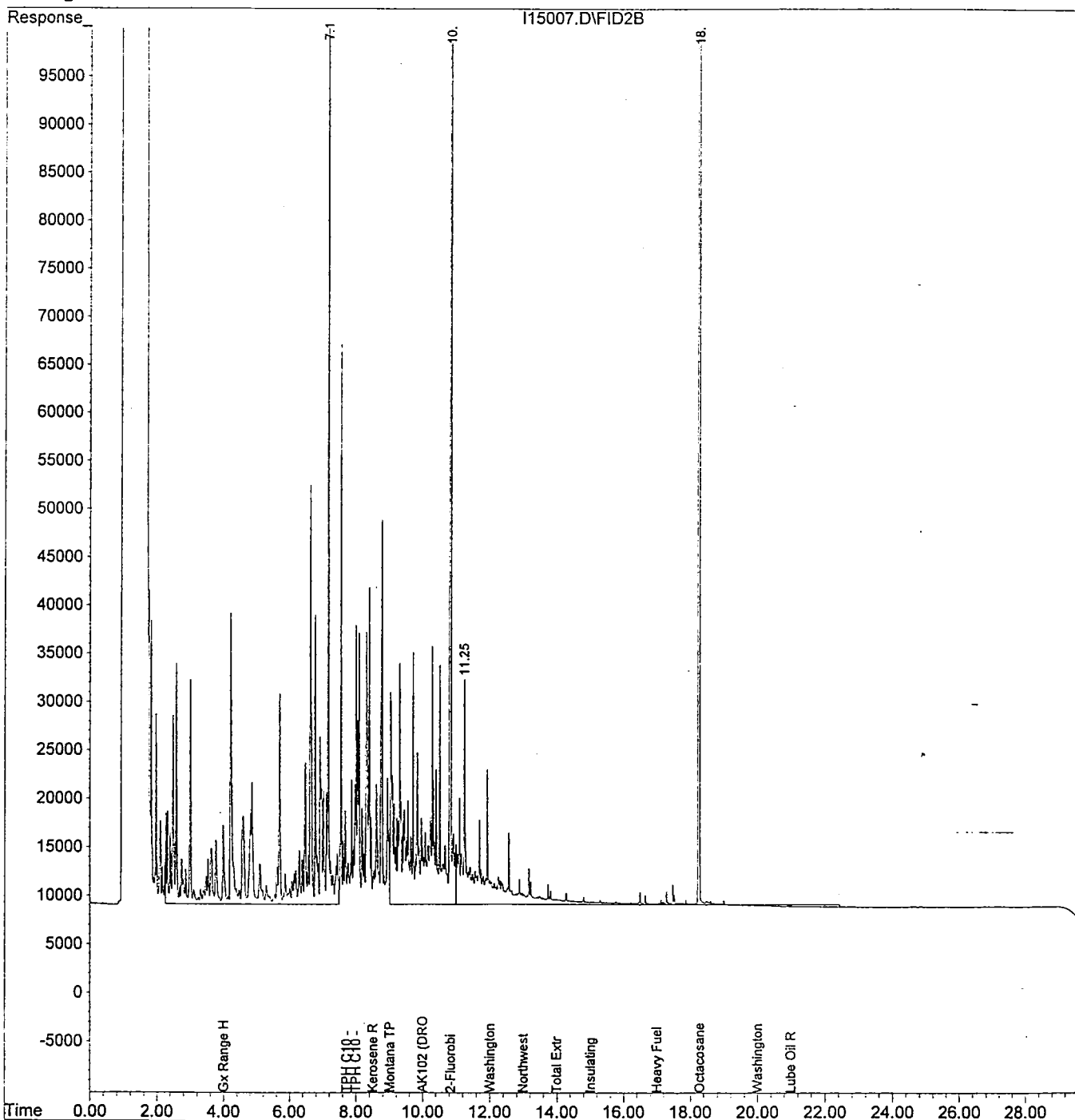
Data File : C:\HPCHEM\DATA.SEC\I15007.D
Acq On : 15 Sep 1998 2:47 pm
Sample : b809293-04
Misc : hs
IntFile : SURR.E
Quant Time: Sep 15 15:21 1998

Vial: 6
Operator: CC
Inst : GC #1
Multiplr: 1.00

Quant Results File: TPHD2.RES

Quant Method : C:\HPCHEM\1\METHODS\TPHD2.M (Chemstation Integrator)
Title : TPH-D Rear Method
Last Update : Tue Sep 15 09:55:21 1998
Response via : Multiple Level Calibration
DataAcq Meth : TPHD.M

Volume Inj. :
Signal Phase :
Signal Info :



Quantitation Report

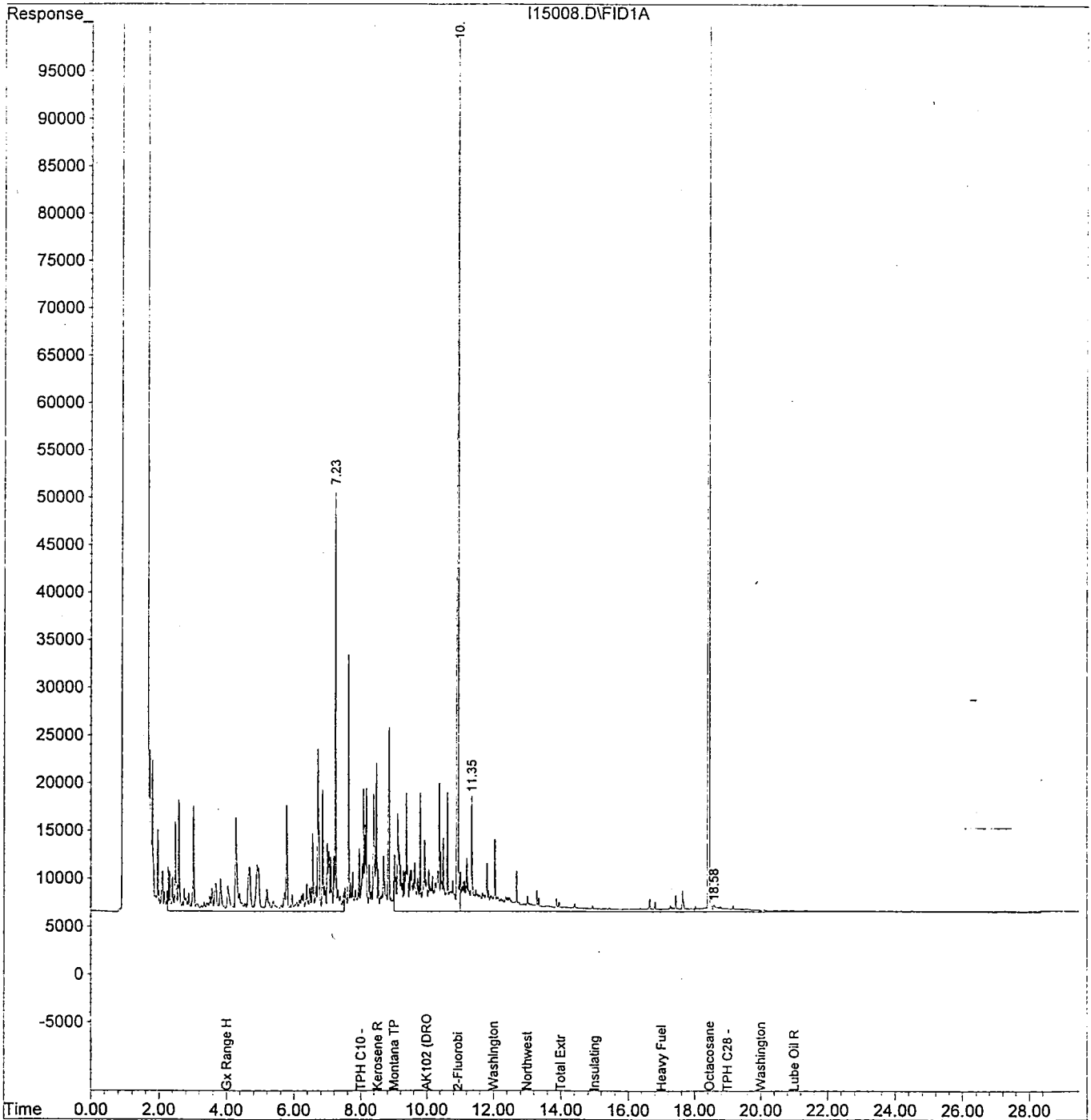
Data File : C:\HPCHEM\DATA\I15008.D
Acq On : 15 Sep 1998 2:47 pm
Sample : b809293-06
Misc : hs
IntFile : SURR.E
Quant Time: Sep 15 15:20 1998

Vial: 7
Operator: CC
Inst : GC #1
Multiplr: 1.00

Quant Results File: TPHD.RES

Quant Method : C:\HPCHEM\1\METHODS\TPHD.M (Chemstation Integrator)
Title : TPH-D Front Method
Last Update : Tue Sep 15 09:32:03 1998
Response via : Multiple Level Calibration
DataAcq Meth : TPHD.M

Volume Inj. :
Signal Phase :
Signal Info :



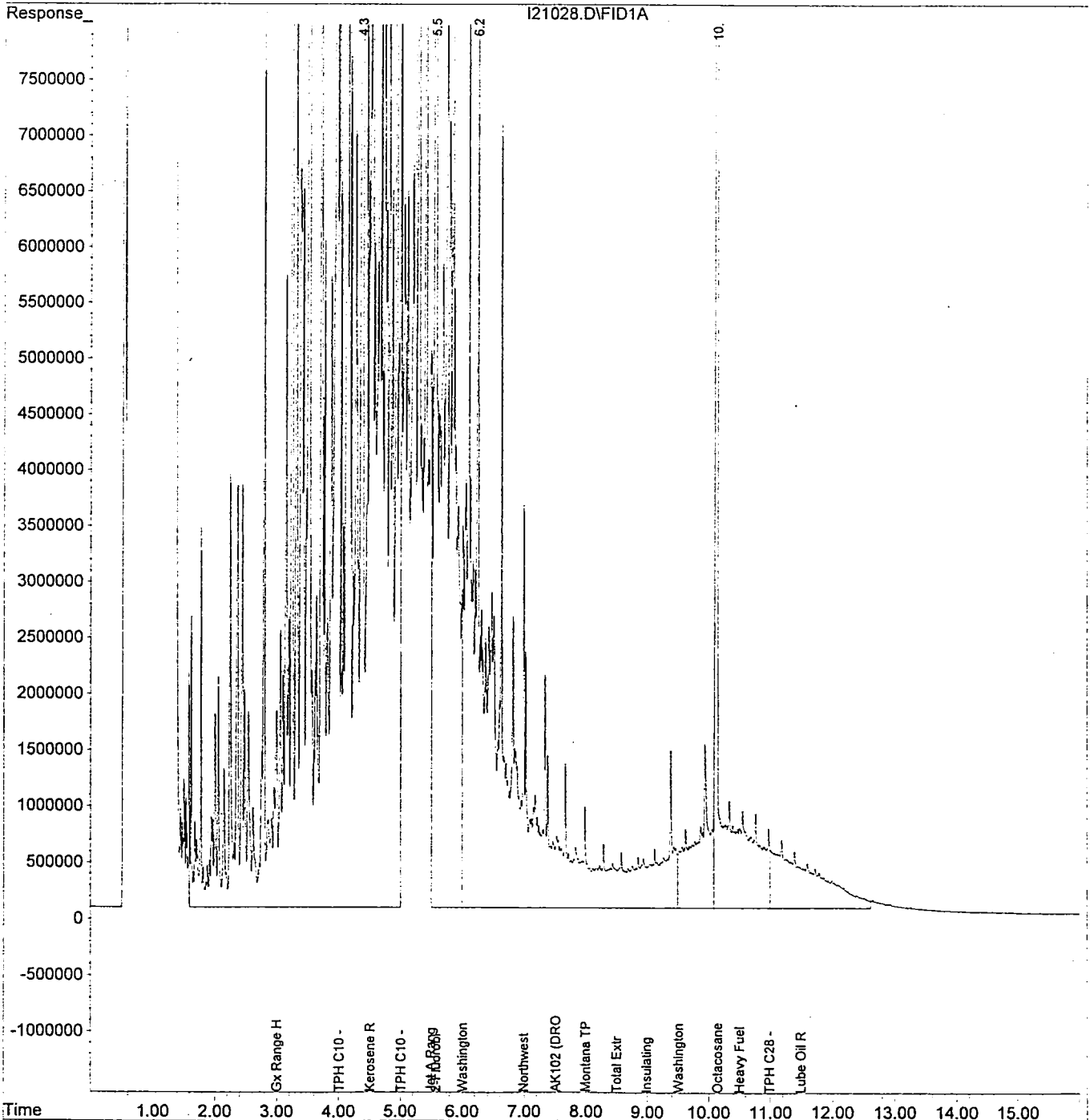
Quantitation Report

Data File : C:\HPCHEM\DATA\I21028.D
Acq On : 9-21-98 1:22:56 PM
Sample : b809293-02
Misc : s
IntFile : SURR.E
Quant Time: Sep 21 14:10 1998

Vial: 23
Operator: kj
Inst : GC #7
Multiplr: 1.00

Quant Method : C:\HPCHEM\4\METHODS\TPHD.M (Chemstation Integrator)
Title : TPH-D Front Method
Last Update : Fri Sep 11 09:20:25 1998
Response via : Multiple Level Calibration
DataAcq Meth : TPHD.M

Volume Inj. :
Signal Phase :
Signal Info :



Quantitation Report

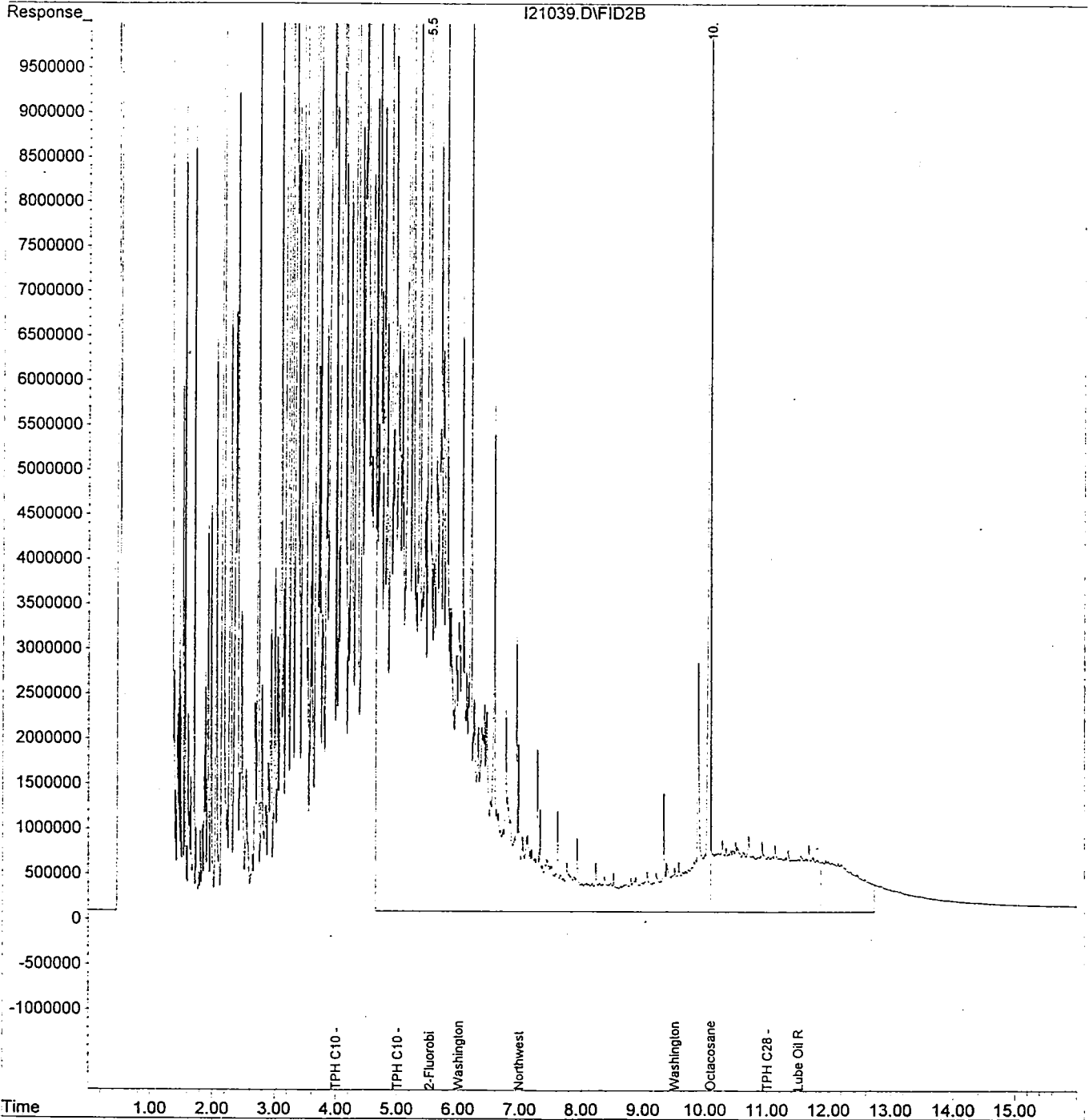
Data File : C:\HPCHEM\4\DATA.SEC\I21039.D
Acq On : 9-21-98 3:45:07 PM
Sample : b809293-04
Misc : s
IntFile : SURR.E
Quant Time: Sep 22 7:17 1998

Vial: 24
Operator: kj
Inst : GC #7
Multiplr: 1.00

Quant Results File: TPHD2.RES

Quant Method : C:\HPCHEM\4\METHODS\TPHD2.M (Chemstation Integrator)
Title : TPH-D Rear Method
Last Update : Wed Sep 16 11:49:39 1998
Response via : Multiple Level Calibration
DataAcq Meth : TPHD.M

Volume Inj. :
Signal Phase :
Signal Info :



Quantitation Report

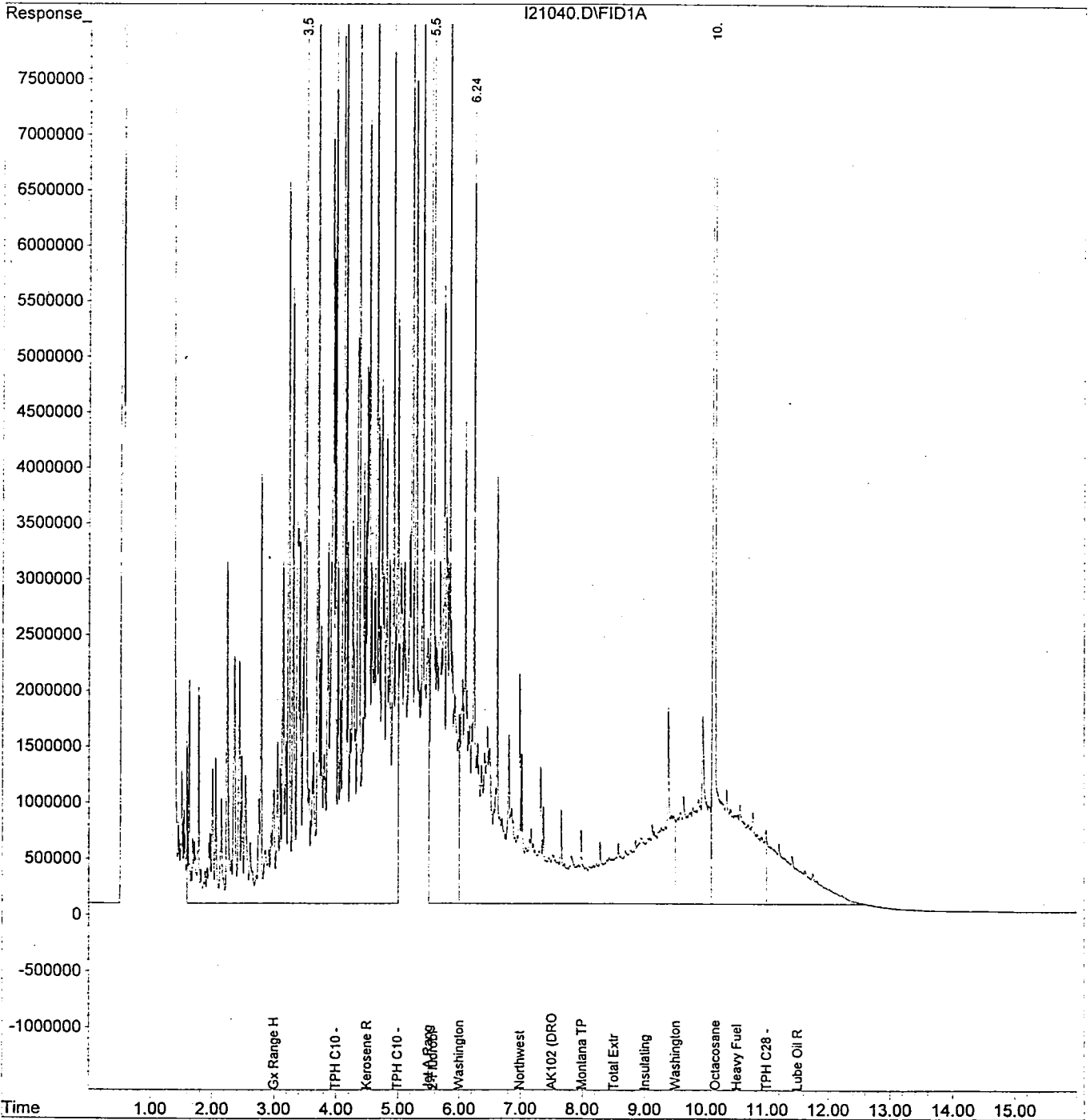
Data File : C:\HPCHEM\DATA\I21040.D
Acq On : 9-21-98 3:45:07 PM
Sample : b809293-06
Misc : 1600 ppm 0380077
IntFile : SURR.E
Quant Time: Sep 22 6:57 1998

Vial: 25
Operator: kj
Inst : GC #7
Multiplr: 1.00

Quant Results File: TPHD.RES

Quant Method : C:\HPCHEM\4\METHODS\TPHD.M (Chemstation Integrator)
Title : TPH-D Front Method
Last Update : Fri Sep 11 09:20:25 1998
Response via : Multiple Level Calibration
DataAcq Meth : TPHD.M

Volume Inj. :
Signal Phase :
Signal Info :



Site Name: Grandview Mar Prop. No: 01-070 Ad ss: 100 E Wine Country R
 Grandview, WA 98930
 Sampler: _____ Date: _____
 Purpose: waste characterization Method: Grab S.Spoon Bailer Pump
 Lab Name: North Creek Analytical Preserved: Ice Acid None
 Lab Address: 18939-120th Ave NE, Suite 101 Phone (425) 481-9200 PO No.: blanket contract
Bothell, WA 98011

Sample #	Location/Description	Type	Analysis Instructions	EPA Method
1		SWP	① HCLD with TPH-g or TPH-d	
2		SWP	extended as needed follow up	
3		SWP	② BTEX	
4		SWP	③ Total Pb	
5		SWP		
6		SWP	- run each sample for	
7		SWP	analyses listed above	
8		SWP		
9		SWP	- send analytical results	
10		SWP	to Anne Wilkinson	
11		SWP		
12	1A-1B Hole # 1 both	SWP	Composite 1A+1B	
13	1A-1B 12'-15'	SWP		
14	1A-1B	SWP		
15	2A-2B Hole # 3	SWP	Composite 2A+2B	
16	2A-2B 12'-15'	SWP		
17	2A-2B	SWP		
18	3A-3B Hole # 5 12'-15'	SWP	Composite 3a+3b	
19	3A-3B	SWP		
20	3A-3B	SWP		
21	soil capping for all holes	SWP		
22	are combined into 2 drums	SWP		
		SWP		

Handwritten: B 909 293
 APM

Handwritten: HAPPY

Other Instructions: _____
 Sample Count = _____ Check sample jar count against Log! * S = Soil W = Water P = Product

CHAIN OF CUSTODY RECORD

Relinquished By: JM Mathew 9-11-98 Received By: Anne Wilkinson Date & Time: 9/11/98 2:00
 Relinquished By: Anne Wilkinson Received For Lab By: Patty Nichols Date & Time: 9/14/98 15:45

GENERAL LAB INSTRUCTIONS

- Please provide the requested information
- Sample numbers assigned by Lab: _____ to _____ Date Analyzed: _____
 - Person performing analysis: _____ Data Reviewer: _____
 - Scheduled sample disposal date: _____ NOTIFY TIME OIL CO. BEFORE DISPOSAL
 - Provide copies of ALL chromatograms, including QA/QC runs.

IMPORTANT! PLEASE RETURN A COPY OF THIS FORM WITH YOUR REPORT TO TIME OIL CO.
 Attn: Environmental Manager, PO Box 24447 Terminal Sta., Seattle, WA 98124 (206) 285-2400