

---

# **DRAFT PUBLIC PARTICIPATION PLAN**

**CORNWALL AVENUE LANDFILL SITE  
BELLINGHAM, WASHINGTON**

---

**SEPTEMBER 2004**



Prepared by  
Washington State Department of Ecology

# TABLE OF CONTENTS

INTRODUCTION.....	3
LOCATION AND SITE BACKGROUND.....	3
Location.....	3
Site Background.....	3
HOW THE SITE WILL BE CLEANED UP.....	5
Site Investigation and Study.....	5
Cleanup.....	5
COMMUNITY MEMBER CONCERNS.....	5
PUBLIC PARTICIPATION ACTIVITIES AND RESPONSIBILITIES.....	6
Public Involvement Activities.....	6
Plan Update.....	8
Points of Contact.....	8
GLOSSARY.....	9

## FIGURE

Site Location Map.....	4
------------------------	---

## **INTRODUCTION**

The Washington State Department of Ecology (Ecology) has developed this draft public participation plan in accordance to the Model Toxics Control Act (MTCA) to promote meaningful community involvement during the investigation and cleanup of the former Cornwall Avenue Landfill in Bellingham, Washington. Public participation is an integral part of Ecology's responsibilities under the MTCA. Ecology's goal is to provide the public with timely information and meaningful opportunities for participation that are commensurate with each site. Public participation plans are intended to encourage coordinated and effective public involvement tailored to the public's needs at a particular facility. This draft public participation plan describes the tools that Ecology plans to use to inform the public about Cornwall Avenue Landfill site (Site) and identifies opportunities for the community to become involved.

## **LOCATION AND SITE BACKGROUND**

### **Location**

The Site is approximately eight-acres in size and is located at the south end of Cornwall Avenue (see figure). The Site is bounded by Bellingham Bay on the south and west, the R.G. Haley International Corporation, Inc. site on the north (a former wood treatment facility), and the Burlington Northern Santa Fe Railroad tracks on the east. The Site is currently owned by Georgia Pacific West (GP) and the state of Washington. The Washington State Department of Natural Resources (DNR) manages the state-owned portion of the land, which is located adjacent to Bellingham Bay and leased to GP. The inner harbor line represents the boundary between state-owned land and GP-owned land. There is currently no public access to the Site.

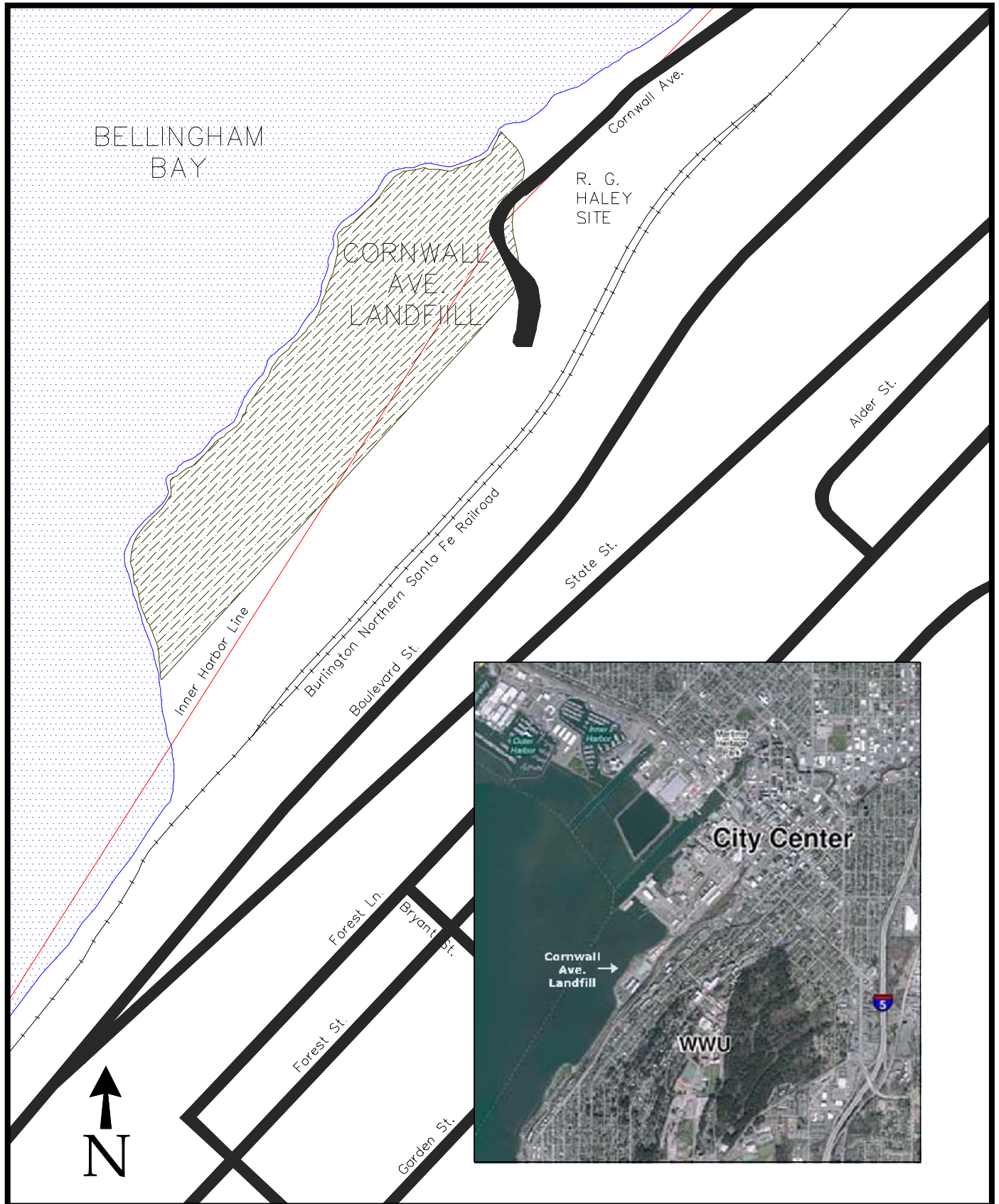
### **Site Background**

Most of the Site was originally tide flats and sub-tidal areas of Bellingham Bay. From 1888 to 1946, the Site was used for sawmill operations, including log storage and wood waste disposal. From 1946 to 1965, the Port held the lease on the state-owned land, subleasing the property to the City from 1953 to 1962. The City used the Site for municipal waste disposal. In 1962, the City entered into a lease with another Port tenant (American Fabricators) who continued waste disposal operations at the Site until 1965.

Landfill operations ended at the Site in 1965, and a soil layer was placed on top of the municipal waste. Rock boulders and broken concrete were later placed on the shoreline to prevent erosion. Despite this informal slope protection, significant shoreline erosion has occurred resulting in the exposure of landfill materials. The beach area is now largely composed of exposed and reworked landfill material, and the toe of the municipal waste fill slope extends out into Bellingham Bay some distance beyond the shoreline

Previous environmental investigations of the Site indicate the presence of hazardous substances in groundwater, surface water, soil and/or sediments above state cleanup standards including arsenic, copper, lead, mercury, silver, zinc, cyanide, polychlorinated biphenyls (PCB), bis(2-ethylhexyl) phthalate, polycyclic aromatic hydrocarbon (PAH) compounds and fecal coliform. As a result, the Site is subject to the investigation and cleanup requirements of the MTCA and the Sediment Management Standards, administered by Ecology.

# Location map of Cornwall Avenue Landfill site



The Cornwall Avenue Landfill site is one of several cleanup sites identified in the Bellingham Bay Comprehensive Strategy, a bay-wide guidance document issued in 2000. The Comprehensive Strategy integrates sediment cleanup, control of pollution sources, habitat restoration and aquatic/shoreline land use on a bay-wide scale.

## **HOW THE SITE WILL BE CLEANED UP**

### **Investigation and Study**

Initial work at the Site will focus on completing a remedial investigation and a feasibility study (RI/FS). The remedial investigation will determine the type, level, location and sources of contamination at the site. The feasibility study will evaluate a range of remedial alternatives that address the contamination, minimizing or eliminating the human health and environmental threats. Implementation of this work will lead to the generation of a draft RI/FS report. Ecology will solicit public comment on the draft RI/FS prior to finalization.

### **Cleanup**

After the RI/FS is finalized, a draft Cleanup Action Plan (CAP) will be completed by Ecology that describes the remedial alternative preliminarily selected by Ecology. The CAP will be an exhibit to a legal agreement that compels cleanup of the site. The legal agreement and CAP will be issued for public review and comment prior to finalization. Actual cleanup will begin when the CAP is implemented. This includes design, construction, operation and monitoring of cleanup actions.

## **KEY COMMUNITY CONCERNS**

Through the development of the Bellingham Bay Comprehensive Strategy, including associated community outreach efforts, Ecology has preliminarily identified the following concerns and interests that may apply to the investigation and cleanup of the Cornwall Avenue Landfill site:

- Protection of human health and the environment
- Stewardship of state-owned aquatic lands
- Avoidance of impacts to important fisheries resources and habitats
- Coordination of cleanup actions with other Bellingham Bay site cleanups
- Opportunities for public involvement
- Compliance with regulatory requirements

Additional public concerns may be identified over the course of the Site cleanup through: public comment periods; community interviews; surveys; meetings; and other contacts with individuals, community groups, or organizations.

## **PUBLIC PARTICIPATION ACTIVITIES AND RESPONSIBILITIES**

The purpose of this public participation plan is to promote public understanding and participation in the MTCA activities planned for this site. This section of the plan addresses how Ecology, the Port, and the City share information and receive public comments and community input on the Site activities

### **Public Involvement Activities**

Ecology uses a variety of activities to facilitate public participation in the planning and cleanup of MTCA sites. The following is a list of the public involvement activities that Ecology will use, their purposes, and how they will be used during the cleanup of the Site.

#### ***Formal Public Comment Period***

Public comment periods usually last 30 days and are the primary method Ecology uses to get feedback from the public on proposed cleanup decisions. Public comment periods are required on all agreed orders, consent decrees and enforcement orders. Public comment periods are also required for all Ecology-conducted remedial actions.

During a comment period, the public can comment in writing. Verbal comments are taken if a public hearing is held. After formal comment periods, Ecology reviews all comments received and may respond in a document called a ***responsiveness summary***. A responsiveness summary is a summary of oral and/or written public comments received by Ecology during a comment period on key documents, and Ecology's responses to those comments.

Ecology will consider the need for changes or revisions based on input from the public. If significant changes are made, then a second comment period may be held. If no significant changes are made, then the draft document(s) will be finalized.

#### ***Public Meetings***

Public meetings may be held at key points during the investigation and cleanup process. Ecology also may offer public meetings for actions expected to be of particular interest to the community. These meetings will be held at locations convenient to the community.

#### ***Information Repositories***

During the comment period, the site documents will be available for review at information repositories. Ecology can also make copies of documents for a fee.

For the Cornwall Avenue Landfill site, the information repositories are:

- Bellingham Public Library, 210 Central Avenue, Bellingham  
Phone: (360) 676-6860
- Department of Ecology, Bellingham Field Office, 1204 Railroad Avenue, Suite 200  
Phone (360) 738-6250

- Department of Ecology, Northwest Regional Office, 3190 160<sup>th</sup> Avenue SE, Bellevue  
Phone: (425) 649-7190

Information on the Cornwall Avenue Landfill site will also be posted on the Ecology website at:  
[http://www.ecy.wa.gov/programs/tcp/sites/blhm\\_bay/sites/bel\\_bay\\_sites.html](http://www.ecy.wa.gov/programs/tcp/sites/blhm_bay/sites/bel_bay_sites.html)

### ***Site Register***

The Site Register is published by Ecology bi-monthly to inform the public of:

- Activities related to the study and cleanup of contaminated sites
- Public meetings/hearings and public comment periods
- Discussion or negotiations of legal agreements
- Availability of cleanup reports
- Hazard rankings of sites

If you would like to regularly receive the Site Register, please contact:

Site Register  
Department of Ecology-Toxics Cleanup Program  
PO Box 47600  
Olympia WA 98504-7600  
(360) 407-7170

If you would like to be placed on the Site Register's e-mailing list, complete the electronic form at [http://www.ecy.wa.gov/programs/tcp/pub\\_inv/pub\\_inv2.html](http://www.ecy.wa.gov/programs/tcp/pub_inv/pub_inv2.html).

### ***Mailing List***

Ecology, with assistance from the Port and City, has compiled a mailing list for the Site. The list includes individuals, groups, public agencies, elected officials, private businesses, potentially affected parties, and other known interested parties. The list is maintained at Ecology's Northwest Regional Office and will be updated as needed.

### ***Fact Sheets***

Ecology will mail fact sheets to persons and organizations interested in the former Cornwall Avenue Landfill to inform them of public meetings and comment opportunities and important site activities. Ecology may also mail fact sheets about the progress of site activities.

### ***Newspaper Ads***

At a minimum, Ecology will place an ad in *The Bellingham Herald* to announce public comment periods and public meetings or hearings for the Site.

## **Plan Update**

This public participation plan may be updated as the project proceeds. If an update is necessary, the revised plan will be submitted to the public for comment.

## **Public Points of Contact**

If you have questions or need more information about this plan or the former Cornwall Avenue Landfill site, please contact the following person:

Lucy McInerney  
Washington State Department of Ecology  
Northwest Regional Office  
3190 160<sup>th</sup> Avenue SE  
Bellevue, WA 98008-5452  
(425) 649-7272



## GLOSSARY

**Cleanup:** Actions taken to deal with a release, or threatened release of hazardous substances that could affect public health and/or the environment. The term "cleanup" is often used broadly to describe various response actions or phases of remedial responses such as the remedial investigation/feasibility study.

**Cleanup Action Plan (CAP):** A document that explains which cleanup alternative(s) will be used at sites for the cleanup. The Cleanup Action Plan is based on information and technical analysis generated during the remedial investigation/feasibility study and consideration of public comments and community concerns.

**Comment Period:** A time period during which the public can review and comment on various documents and Ecology or EPA actions. For example, a comment period is provided to allow community members to review and comment on proposed cleanup action alternatives and proposed plans. Also, a comment period is held to allow community members to review and comment on draft feasibility studies.

**Consent Decree:** A formal legal document, approved and issued by a court, which formalizes an agreement reached between the state (and EPA if involved) and the potentially liable person(s) on what will take place during the remedial investigation/feasibility study and/or cleanup action. A Consent Decree is similar to an Agreed Order except that a Consent Decree goes through the courts. Consent Decrees are subject to public comment. If a decree is substantially changed, an additional comment period is provided.

**Feasibility Study (FS):** See Remedial Investigation/Feasibility Study.

**Information Repository:** A file containing current information, technical reports, and reference documents available for public review. The information repository is usually located in a public building that is convenient for local residents such as a public school, city hall, or library.

**Model Toxics Control Act (MTCA):** Legislation passed by the State of Washington in 1988. Its purpose is to identify, investigate, and clean up facilities where hazardous substances have been released. It defines the role of Ecology and encourages public involvement in the decision making process. MTCA regulations became effective March 1, 1989 and are administered by the Washington State Department of Ecology.

**Potentially Liable Person (PLP):** Any individual(s) or company(s) potentially responsible for, or contributing to, the contamination problems at a site. Whenever possible, Ecology requires these PLPs, through administrative and legal actions, to clean up sites.

**Public Participation Plan:** A plan prepared to encourage coordinated and effective public involvement designed to the public's needs at a particular site.

**Remedial Investigation:** This study characterizes the site and defines the type and extent of contamination.

**Remedial Investigation/Feasibility Study:** Two distinct but related studies. They are usually performed at the same time, and together referred to as the "RI/FS." They are intended to:

- Gather the data necessary to determine the type and extent of contamination;
- Establish criteria for cleaning up the site;
- Identify and screen cleanup alternatives for remedial action; and
- Analyze in detail the technology and costs of the alternatives.

**Responsiveness Summary:** A summary of oral and/or written public comments received by Ecology during a comment period on key documents, and Ecology's responses to those comments. The responsiveness summary is especially valuable during the Cleanup Action Plan phase at a site when it highlights community concerns.

**Site:** Any building, structure, installation, equipment, pipe or pipeline (including any pipe into a sewer or publicly owned treatment works), well, pit, pond, lagoon, impoundment, ditch, landfill, storage container, motor vehicle, rolling stock, vessel, or aircraft; or any site or area where a hazardous substance, other than a consumer product in consumer use, has been deposited stored, disposed of, or placed, or otherwise come to be located.