

Boeing to Sample Water in Yards and Ditches in Northern Algona

This fall, Boeing will sample water in yards and ditches located in the northern area of the City of Algona (the City). This sampling is part of a larger investigation associated with groundwater contamination from past releases of solvent chemicals on property owned by The Boeing Company (Boeing) in Auburn.

In April of 2013, drilling and sampling of shallow groundwater in part of northern and eastern Algona detected several chemicals of concern:

- trichloroethene (TCE),
- cis-1,2-dichloroethene (cis-1,2-DCE),
- vinyl chloride.

For the samples that had detections, the concentrations of these chemicals in groundwater were either below or just above the state's groundwater cleanup standards.

The groundwater table in Algona can be very high, especially during the winter months. The purpose of this sampling is to show whether chemicals in groundwater are entering surface water in ditches and yards during the wet season of the year.

Testing Process

Boeing will collect water samples from ditches and yards at various locations in northern Algona to determine if the solvent chemicals are present. Ecology will oversee the collection of these water samples by Boeing according to an Ecology-approved work plan. Boeing will submit all ditch and yard water samples to an accredited laboratory for chemical analysis. Boeing will pay all the costs for the sampling and analysis. This work will take place in two phases as described below.

More Information

For questions about the water sampling or how the sample locations were selected, contact either:

Robin Harrover - Site Manager
WA Department of Ecology
Hazardous Waste & Toxics
Reduction Program – Northwest
Regional Office
3190 160th Ave SW
Bellevue WA 98008-5452
Phone: 425-649-7232
E-mail: robin.harrover@ecy.wa.gov

Jennifer Wynkoop
Landau Associates, Inc.
950 Pacific Avenue, Suite 515
Tacoma WA 98402
Phone: 253-284-4879
E-mail: jwynkoop@landauinc.com

For more details about the site, visit Ecology's Boeing Fabrication Auburn website at:
<https://fortress.wa.gov/ecy/gsp/Sitepage.aspx?csid=5049>

Special Accommodation

To request this document in a format for the visually impaired, call the Hazardous Waste and Toxics Reduction Program at 360-407-6700. Persons with impaired hearing, call 711 for Washington Relay Service. Persons with a speech disability, call 877-833-6341.

Phase 1: Ditch Water Sampling

Under the work plan, Boeing will sample roadside ditch water at approximately 22 locations within the study area shown on Figure 1. Some of the sample locations include ditches where nearby groundwater was previously found to be uncontaminated. Ecology will compare the results of the ditch water sampling with previous shallow groundwater test results to see whether chemicals in the groundwater are reaching surface water in the ditches. The data will also help the state Department of Health (DOH) evaluate potential human health effects if people have contact with contaminated surface water.

Boeing's contractor, Landau Associates, will take samples from standing water on public rights-of-way and road shoulders. A two-person crew will do the sampling. The samplers will access ditches from the road shoulder. It is unlikely that sampling will cause any roads to close.

Boeing will schedule sampling after there has been more than 48 hours without significant rainfall to make sure groundwater discharging to ditches is sampled rather than rainfall runoff. Sampling when rainfall runoff is present could dilute groundwater discharge and skew the chemical results lower.

Phase 2: Yard Water Sampling

Boeing will offer to take samples at any home that has standing water in the yard within the sampling area shown on Figure 2. The sampling area was chosen based on areas where groundwater contamination is highest. The yard water sampling area will be expanded if needed, based on the results of the ditch water sampling.

Prior to sampling, Landau Associates will send homeowners (and tenants) a letter and a survey. The survey will gather information about the presence of standing water in residents' yards during various times of the year. This information will help direct sampling of yard water. We have targeted the hatched area shown on Figure 2 for yard sampling. The hatched area corresponds to the approximate area where contaminants were detected in groundwater during the groundwater investigation completed in April 2013. However, if the chemicals of concern are detected during Phase I ditch water sampling beyond the hatched area indicated in Figure 2, the yard water sampling will be expanded to include properties within a 250' buffer zone of the ditches where the chemicals were detected.

After obtaining written permission from homeowners (and tenants), Landau will contact private property owners to determine the best time for sampling standing water in their yards. The work is tentatively scheduled to start in November 2013. When sampling on private property, Landau will use hand held sampling devices to collect yard water samples. Sampling should take about ½-hour at each home location.

Sampling Results

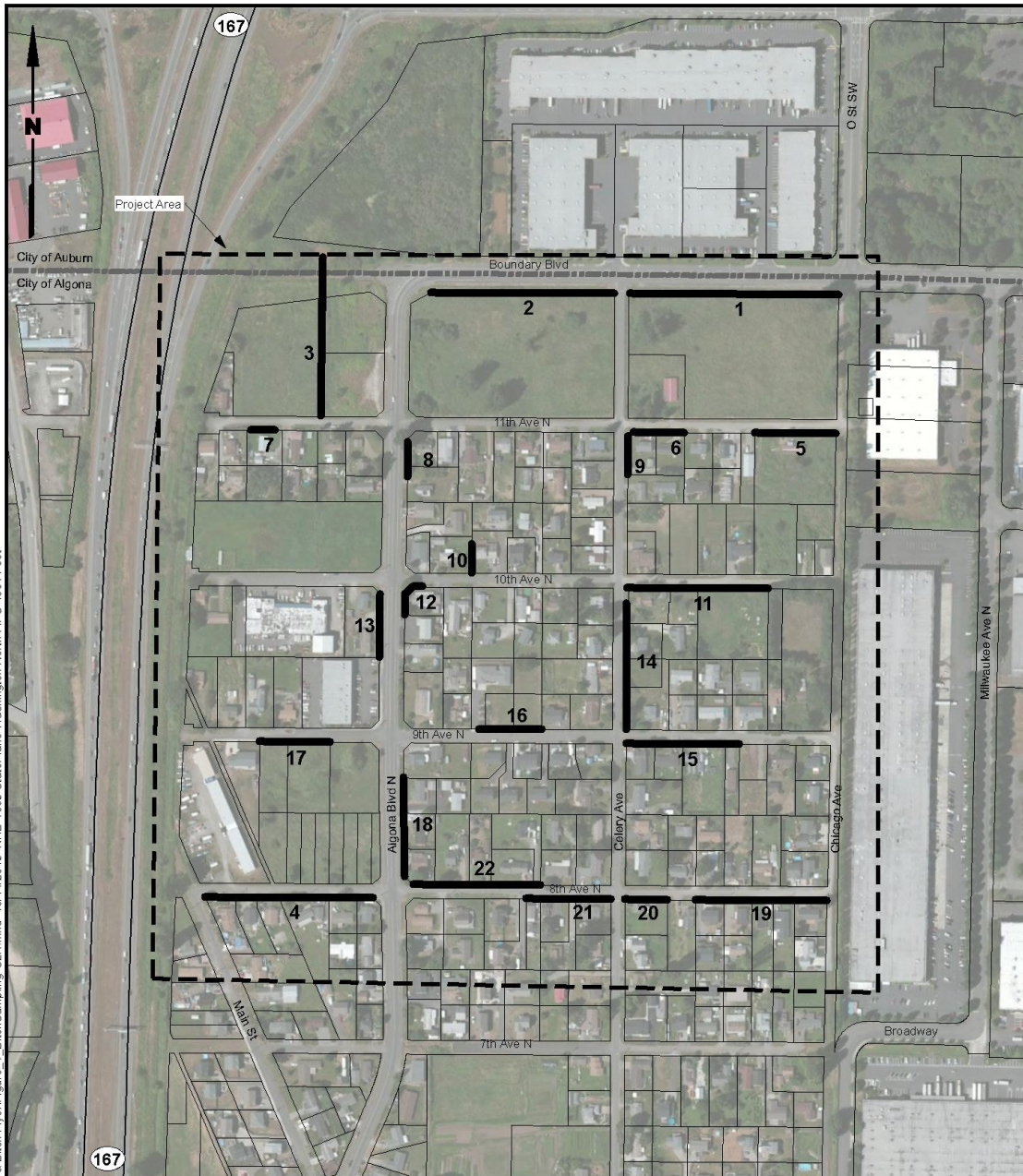
For the ditch water sampling, Ecology will post the results upon receipt to our website: <https://fortress.wa.gov/ecy/gsp/Sitepage.aspx?csid=5049>.

For the yard water sampling, Boeing will mail the sampling results concurrently to the homeowner (and tenant, if applicable), to Ecology, to DOH, and to the City. Included with the results will be a figure of where sampling took place and an explanation of what the results mean. Ecology will post a summary of the results of yard water sampling to our website once the sampling of the homes is complete.

Next Steps

Ecology will review all sampling results and decide if additional yard and ditch water sampling is needed. The DOH will also review results for potential health concerns. In this case, Ecology will also provide additional information as it becomes available on our website.

Boeing Fabrication Auburn Site



G:\Projects\02516\at1001011\Yard & Ditch Flyer\Figure_1_DitchSampling-CLR.mxd 10/14/2013 NAD 1983 StatePlane Washington North FIPS 4601 Feet

Legend

-  22 Proposed Ditch Segment
-  Sample Location and Designation
-  Project Area



Data Source: King County GIS 2013, ESRI World Imagery

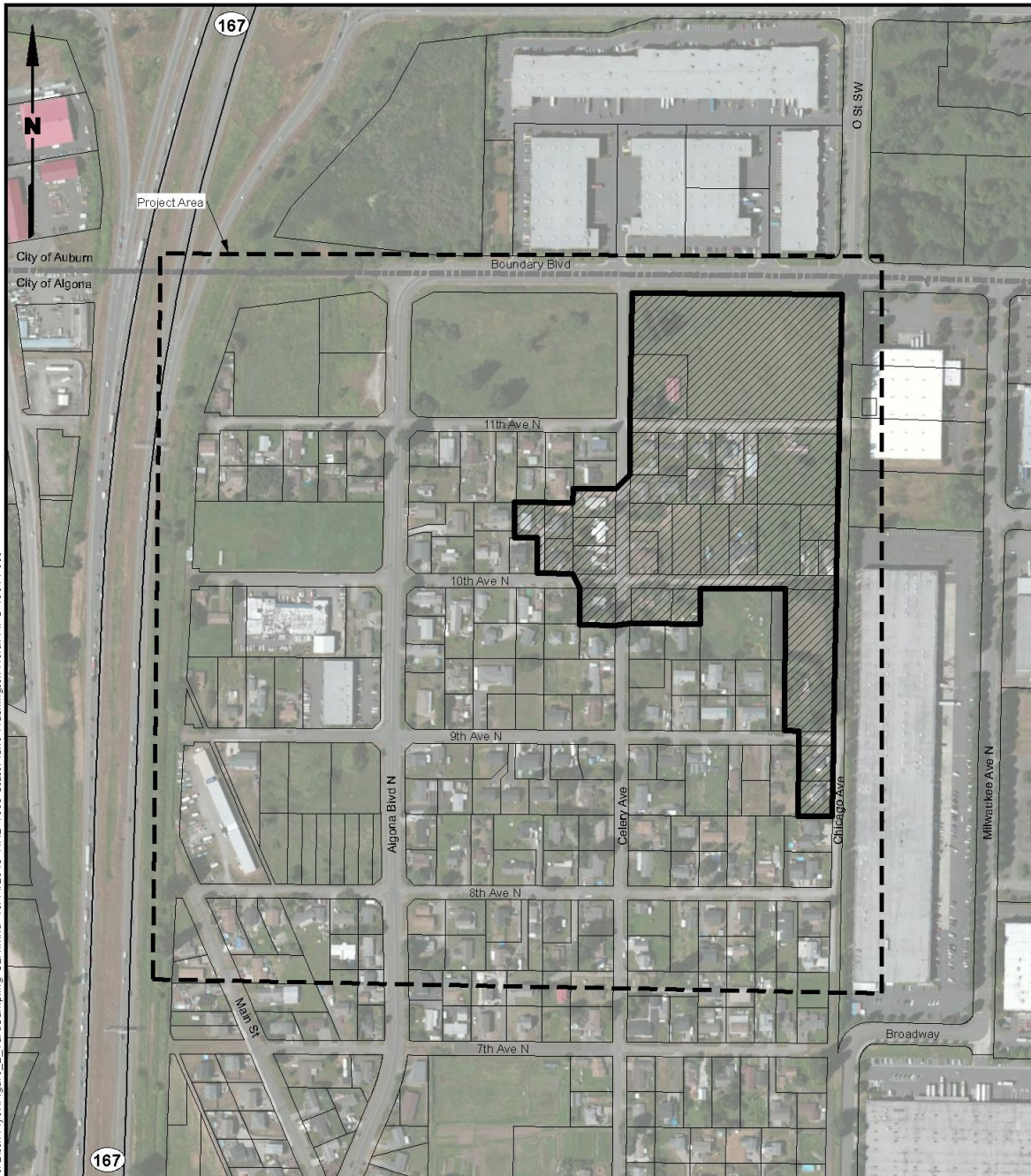


Boeing Fabrication Auburn
Auburn, Washington

Ditch Sampling Plan for Northwest Algona



Figure
1

Boeing Fabrication Auburn Site



G:\Projects\025164110011011Yard & Ditch Five\Figure_2_YardSampling-CLR.mxd 10/14/2013 NAD 1983 StatePlane Washington North FIPS 4601 Feet

Legend

-  Initial Yard Water Sampling Area
-  Project Area



Data Source: King County GIS 2013, ESRI World Imagery 2010



Boeing Fabrication Auburn
Auburn, Washington

Yard Water Sampling Plan

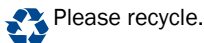
Figure
2



DEPARTMENT OF
ECOLOGY
State of Washington

3190 160th Ave. SE
Bellevue, WA 98008

PRESORTED
FIRST CLASS MAIL
US POSTAGE PAID
WA STATE DEPT OF
PRINTING 98501



Please recycle.

Boeing to Sample Water in Yards and Ditches in Northern Algona

Facility Site ID#: 2018

Cleanup ID#: 5049

To request this document in a format for the visually impaired, call the Hazardous Waste and Toxics Reduction Program at 360-407-6700. Persons with impaired hearing, call 711 for Washington Relay Service. Persons with a speech disability, call 877-833-6341.
