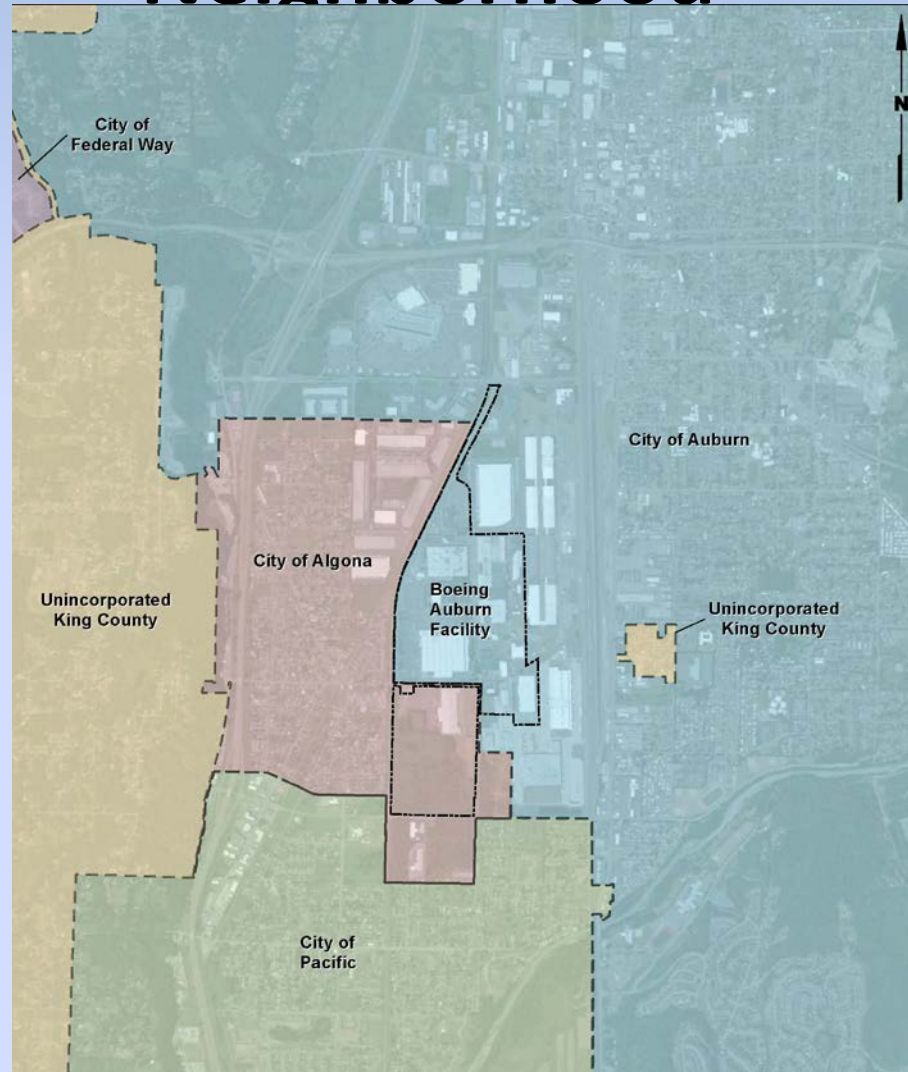


# NE Algona Recent and Proposed Future Environmental Investigation in your Neighborhood



# Who Are We?





# Why Are We Here?

Two Laws require cleanup of contaminated soil, water and air at active industrial sites:

1)The Federal RCRA

(Resource Conservation and Recovery Act)

2)The State MTCA

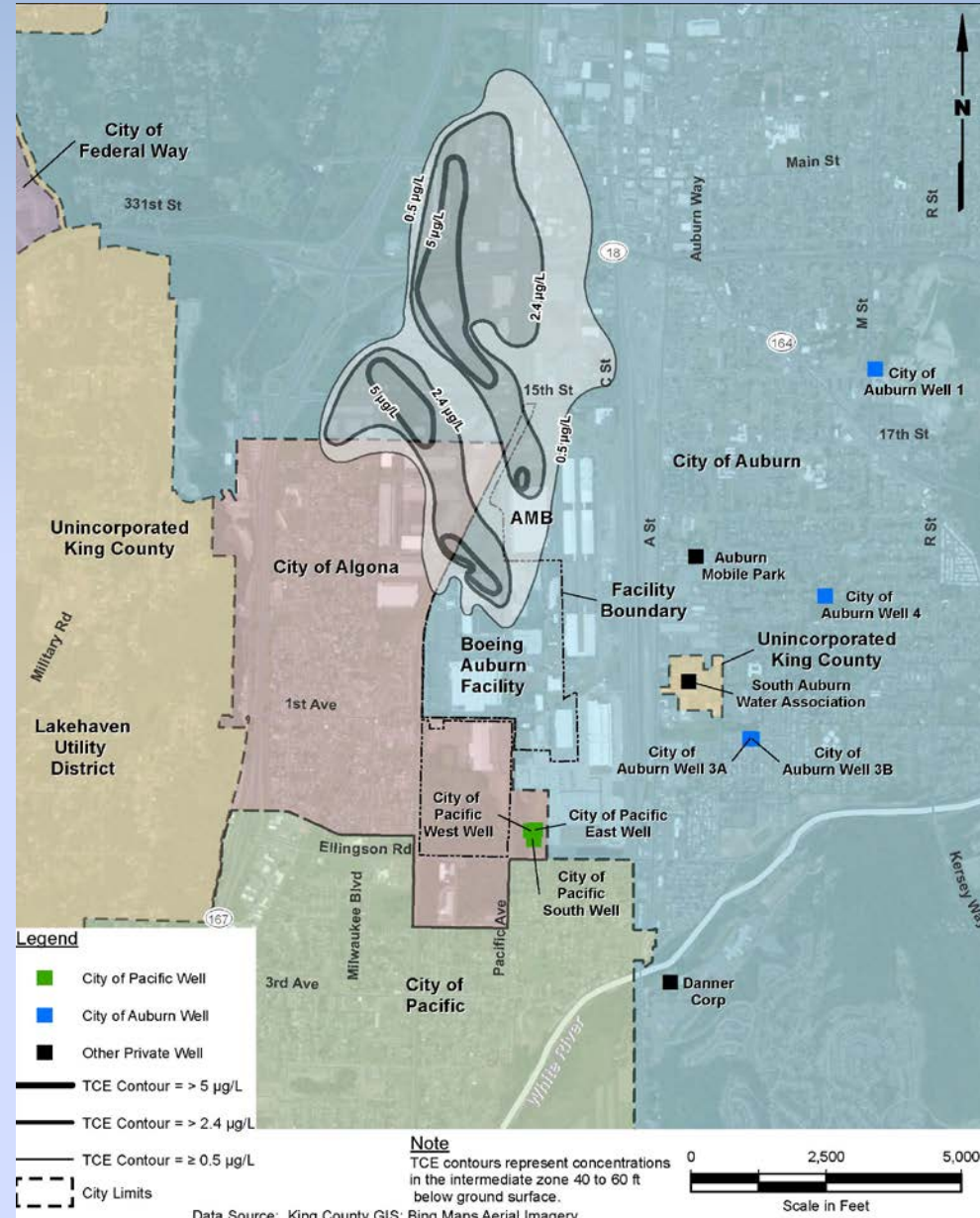
(Model Toxics Control Act)

# **This Site is a State Supervised Cleanup Site**

Boeing is paying for the site cleanup  
including the investigations taking place in  
your area

# What do we know?

Figure of Drinking Water Well locations relative to known plume extent



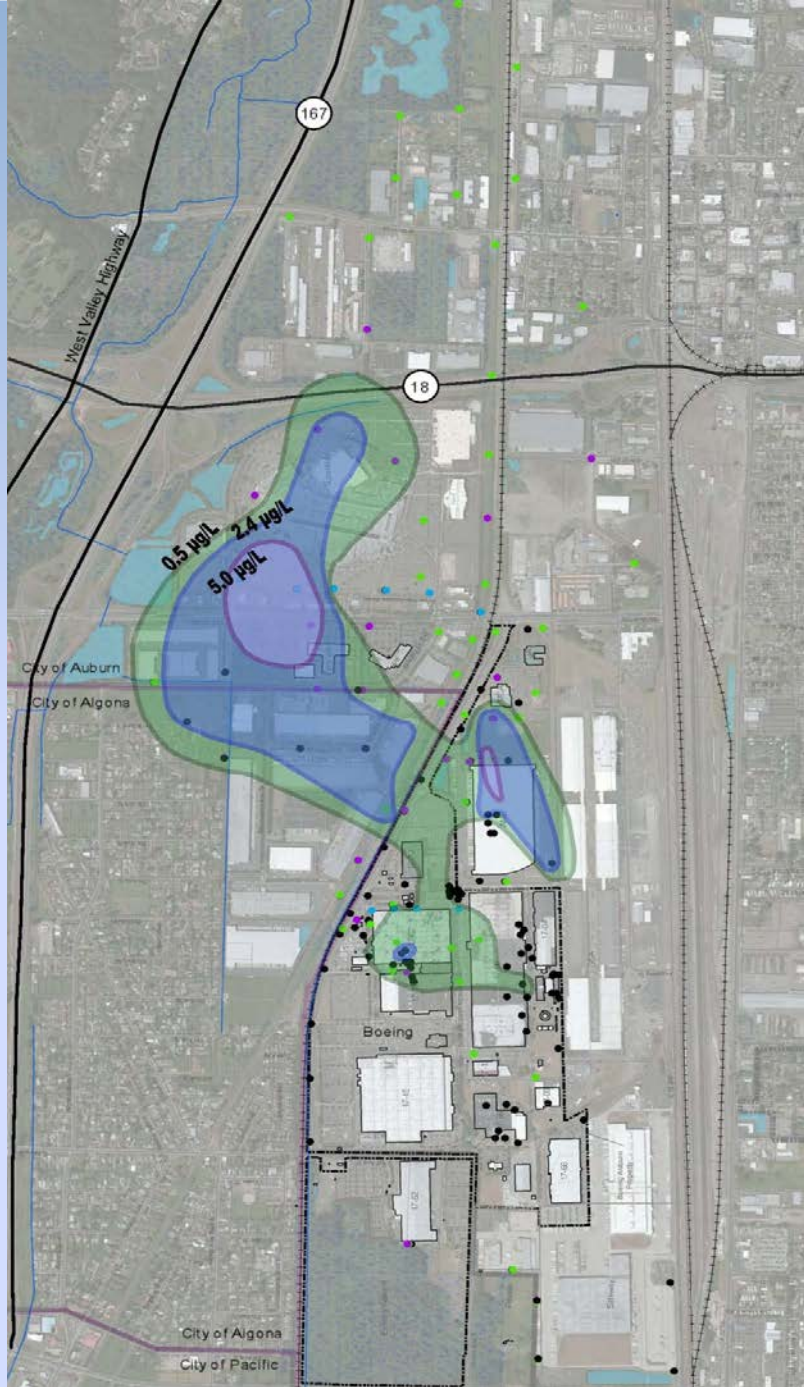
# Timeline

- **1966 to mid-1980s:** TCE used at the facility
- **1987 to 1998:** Facility permit issued for waste management; facility assessment conducted related to waste management practices; TCE release documented at Area 1
- **2002:** Ecology and Boeing sign Agreed Order; public notice issued
- **2003-2005:** Remedial investigations begin at facility and interim cleanup action completed at Area 1

# Timeline Cont.

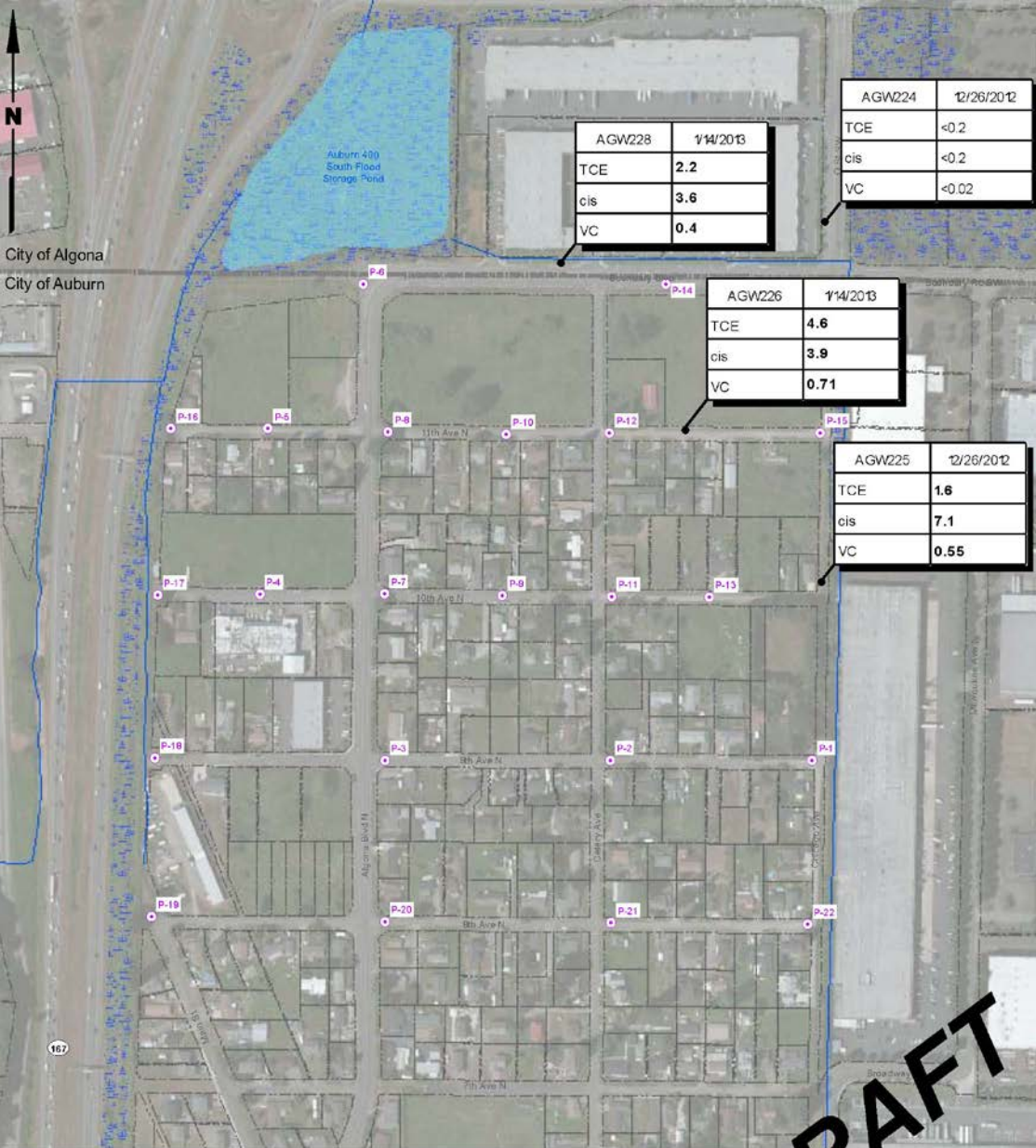
- **2006-2009:** Agreed Order amended and public notice issued; AMB distribution center constructed in Area ; onsite groundwater investigation conducted
- **2009-2013:** Second TCE plume and offsite groundwater impacts discovered; seven groundwater investigation programs completed to investigate source of the second plume and offsite groundwater impacts
- **2011-2012:** WDOH Health Consultation completed and Ecology focus sheet published; notification to interested local municipalities and water districts





**Where are we  
now?**





# December 2012 Groundwater Sampling Results Indicate More Groundwater Testing Is Needed

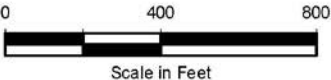
**DRAFT**

**Legend**

- Proposed Direct-Push Shallow Groundwater Sampling Location
- Shallow Groundwater Monitoring Well

**Note**

1. Black and white reproduction of this color original may reduce its effectiveness and lead to incorrect interpretation.



AGW224	12/26/2012
TCE	<0.2
cis	<0.2
VC	<0.02

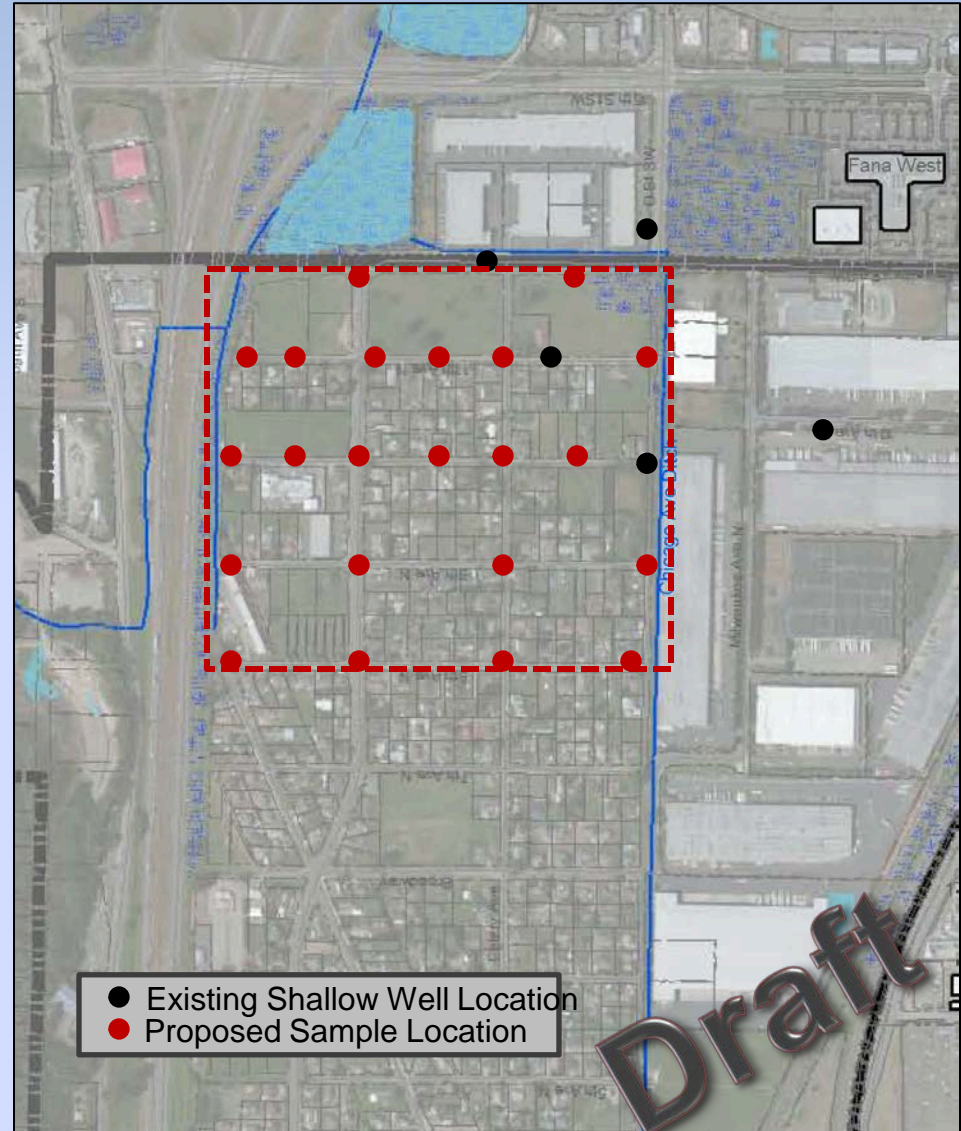
AGW228	1/14/2013
TCE	2.2
cis	3.6
VC	0.4

AGW226	1/14/2013
TCE	4.6
cis	3.9
VC	0.71

AGW225	12/26/2012
TCE	1.6
cis	7.1
VC	0.55

# Additional Groundwater Investigation

- Collect shallow groundwater samples
- Evaluate groundwater conditions
- Proposed sample locations





# What Will the Drilling Involve?

- Location of work
- Public safety
- 1 to 2 hours per location
- Access
- Noise
- Patching the holes



Photos courtesy of Cascade Drilling

# Timing and Next Steps

- Drilling work is tentatively scheduled for the week of March 11 through 15, 2013
- Results will be made available on the Ecology website

# What Happens After the Groundwater Investigation?

Based on groundwater data results and state cleanup standards, Ecology identifies homes for building surveys and indoor air sampling

The next public meeting is tentatively scheduled for May 2013 after the final test results have been evaluated by Ecology, DOH and the City

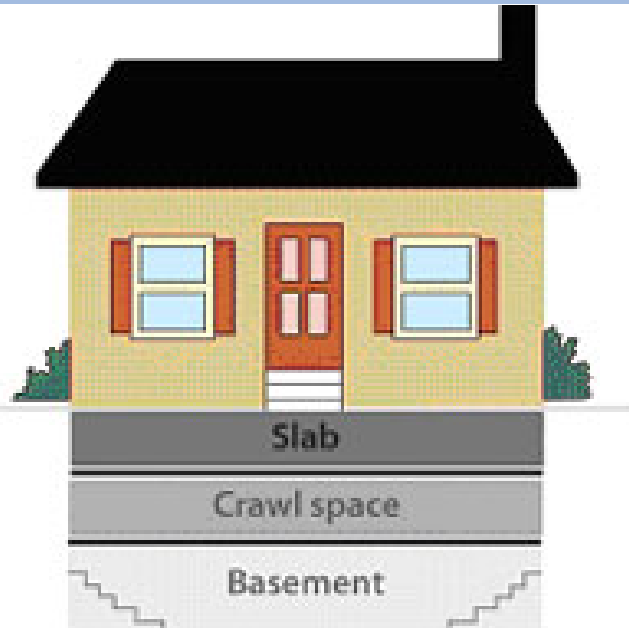
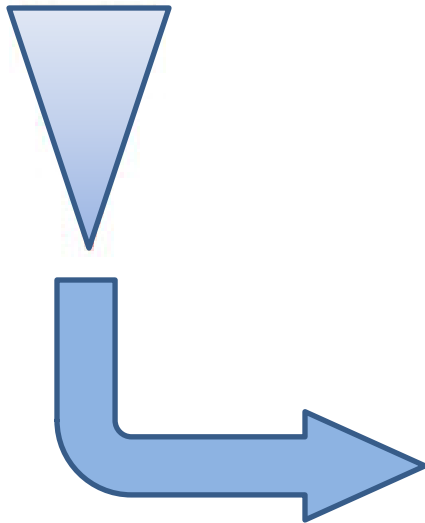
# Why Sample Indoor Air?

Some of the TCE in the groundwater may volatilize (become vapor) and move upwards through the soil and into a building's indoor air.

This is called **“vapor intrusion.”**



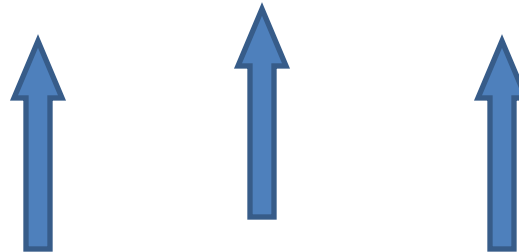
Chemical Spill



Chemical vapor movement



Groundwater Contamination



# HOW do we determine if vapor intrusion may be contaminating indoor air?



- we look at the groundwater concentrations
- we look at the depth to the water table
- we look for points of entry and building design
- we use this information to make decisions about where to collect soil gas(sometimes), indoor air, and/or crawlspace air samples

# Why Sample Indoor Air In Algona?

The levels of TCE contamination we have found at two locations in Algona's shallow groundwater are very low, below the Federal Drinking Water standard

However, the groundwater table in at least some areas of Algona is very shallow.

So we will recommend testing indoor air in those homes where there is TCE at the shallow groundwater table at concentrations above the health risk-based screening level.

# Important Points to Consider

- Allowing indoor air sampling is voluntary
- Indoor air sampling costs are paid by Boeing
- Indoor air sampling can set your mind at ease if results are below state cleanup levels
- Indoor air sampling results that are of concern lead to mitigation measures paid for by Boeing that will protect your health

# How to stay informed?

Contact the Site Manager Robin Harrover:

3190 160<sup>th</sup> Ave SE

Bellevue, WA 98008

Phone Number: 425-649-7232

Email Address: Robin.Harrover@ecy.wa.gov

Visit our Ecology's Boeing Fabrication Auburn website:

<https://fortress.wa.gov/ecy/gsp/Sitepage.aspx?csid=5049>