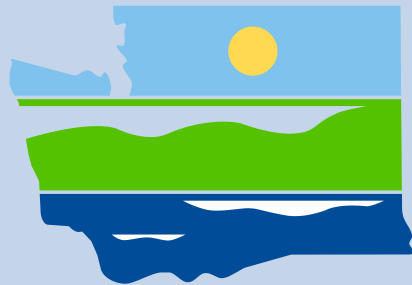


Whidbey Marine & Auto Supply

Groundwater Sampling Results Status Update

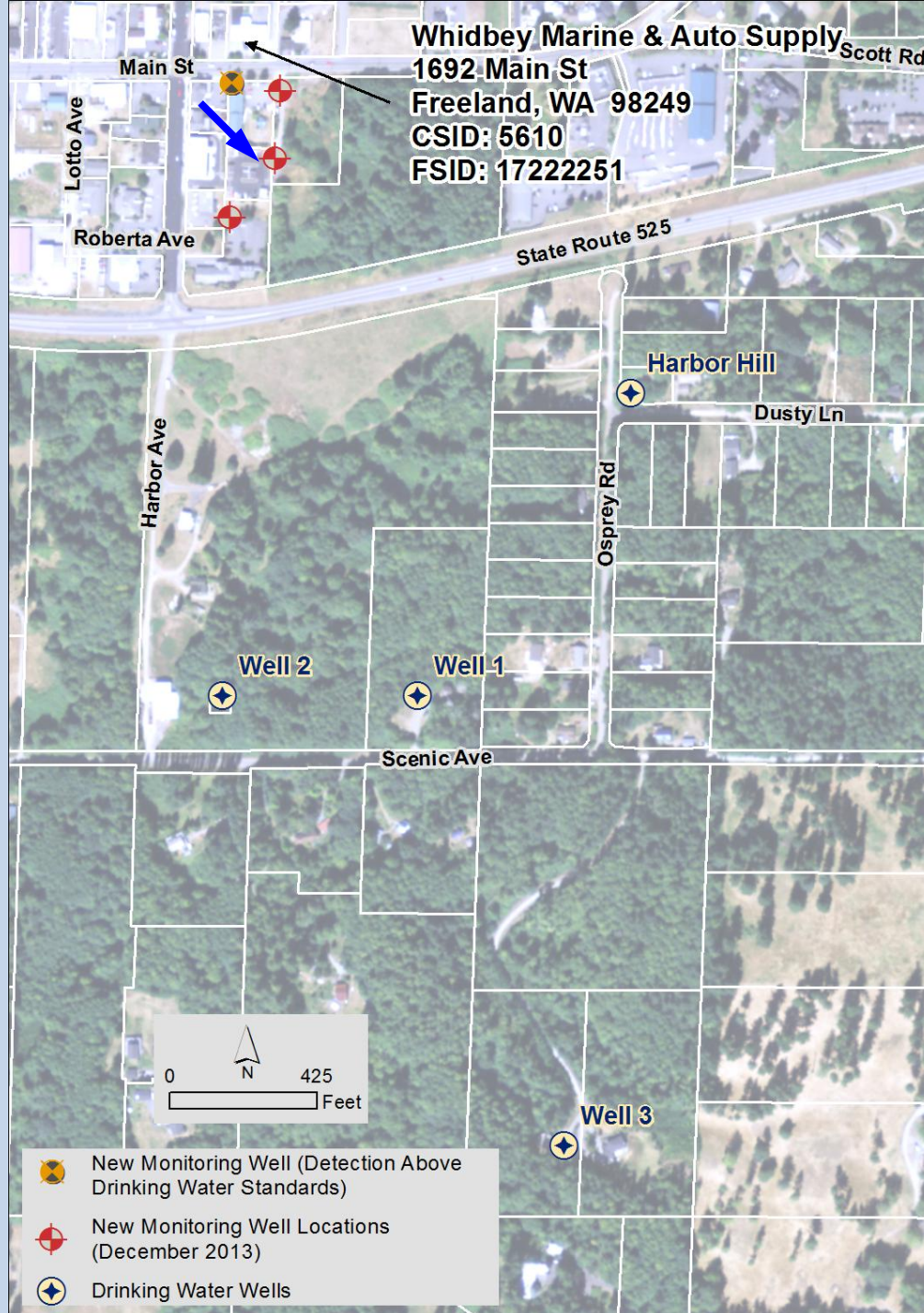
February 2014



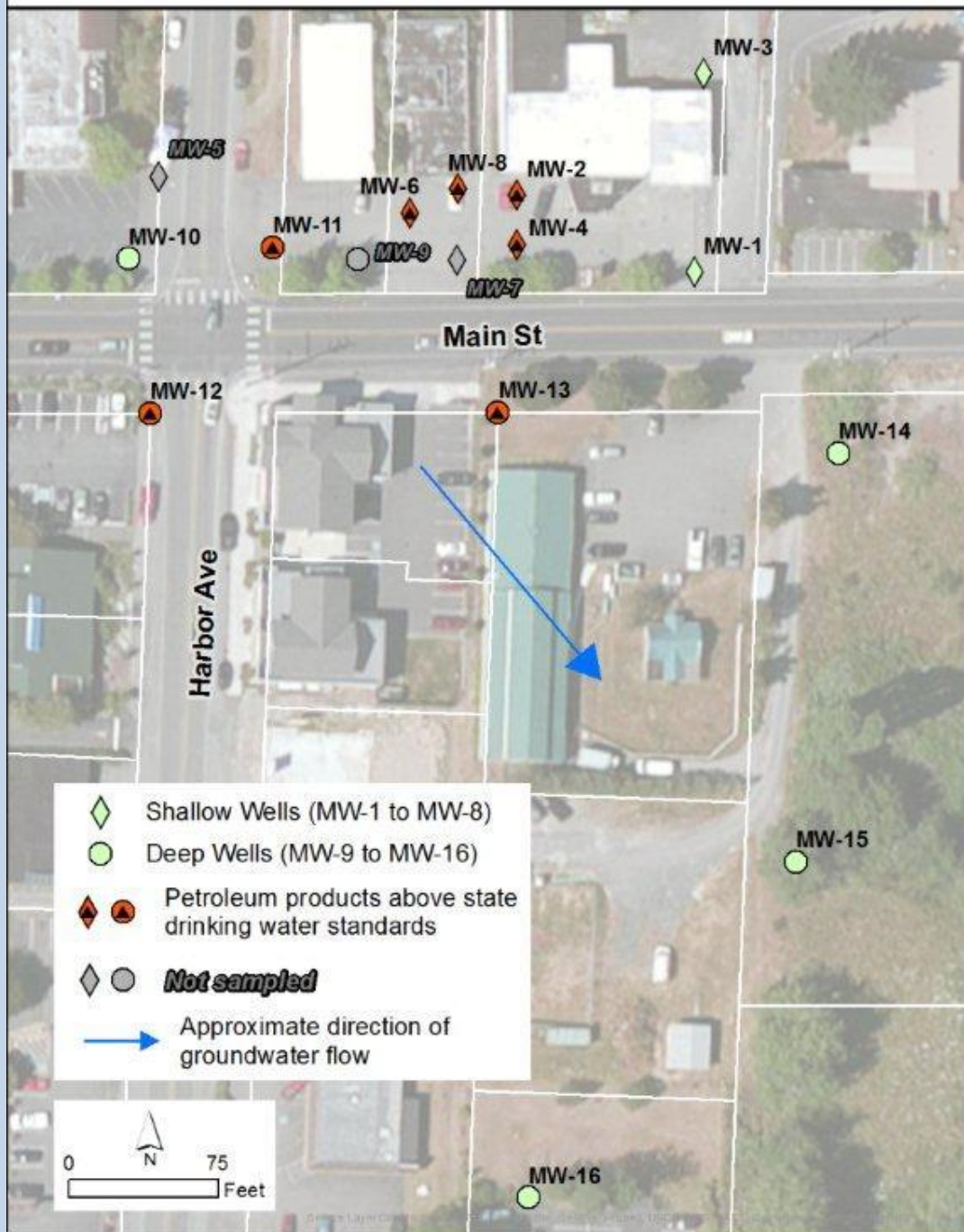
DEPARTMENT OF
ECOLOGY
State of Washington

Site Background

- 2005 - Gasoline spill detected
- 2005 – Site Investigations started
- 2006 – Entered Ecology's Voluntary Cleanup Program
- 2012 - Elevated level of gasoline discovered in deeper groundwater zone
- Drinking water wells south of the release
- Monitoring wells between spill and drinking water wells



Whidbey Auto & Marine Groundwater Sampling Results (Dec 2013)



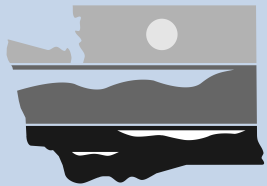
Next Steps:

- Continue groundwater monitoring and sampling
- Continue to investigate extent contamination
- Evaluate cleanup options for deeper aquifer
- Ecology's Site review continues through the Voluntary Cleanup Program

How to stay informed

Ecology's Whidbey Marine and Auto Supply Website:

<https://fortress.wa.gov/ecy/gsp/Sitepage.aspx?csid=5610>



DEPARTMENT OF
ECOLOGY
State of Washington

Louise Bardy, Voluntary Cleanup Program Unit Supervisor

Phone: (425) 649-7209,

Email: louise.bardy@ecy.wa.gov

Diane Escobedo, Site Manager

Phone: (425) 649-7097

Email: diane.escobedo@ecy.wa.gov

Eugene Freeman, Site Hydrogeologist

Phone: (425) 649-7191

Email: eugene.freeman@ecy.wa.gov



Doug Kelly, Hydrogeologist

Phone: (360) 678-7885

Email: d.kelly@co.island.wa.us