

Proposed Removal from the Hazardous Sites List

The Washington State Department of Ecology (Ecology) proposes removing the Port of Tacoma's Parcel 88 site from the Hazardous Sites List. You may comment on this from **May 1– June 2, 2014**. The box to the right shows where to find:

- A draft letter, which states the Port of Tacoma (the port) met all cleanup activities the agreed order (legal agreement) required.
- The cleanup action plan, which describes how the port cleaned up the site, and a final groundwater compliance monitoring report.
- Fact sheets and reports about site history and cleanup.

Background

The Parcel 88 site is located at 1621 Marine View Drive in Tacoma (see map on back). From the 1950s to 2006, the site was a gravel and sand mine and solid waste recycling facility. Former owners brought in soil, concrete, asphalt, wood waste and metal waste as fill.

Studies found the soil and groundwater were polluted with petroleum hydrocarbons and metals, like lead, copper, arsenic, and zinc.

Site Cleanup

A former owner and the port cleaned up the site by removing polluted soil, debris, and old underground storage tanks. The port restored 30 acres of habitat on the site in 2010.

The port monitored groundwater four times a year to make sure cleanup levels were reached. Now, a full year of monitoring shows groundwater contamination is below state cleanup levels. Ecology has determined cleanup at the site is complete.

Ecology provided the port with a \$3 million Remedial Action Grant to help with a part of the cleanup cost.

What Happens Next

At the end of the comment period, we will respond to comments in a responsiveness summary. We will send this document to those who commented and post it online. The last step is to remove the site from the Hazardous Sites List.

Comments Accepted

May 1 – June 2, 2014

Send Comments and Technical Questions to:

James DeMay, Site Manager
Department of Ecology
SWRO Toxics Cleanup Program
P.O. Box 47775
Olympia, WA 98504-7775
(360) 407-6603
James.DeMay@ecy.wa.gov

Public Involvement Questions:

Natalie Graves
Public Involvement Coordinator
(360) 407-0067
Natalie.Graves@ecy.wa.gov

DOCUMENT REVIEW LOCATIONS

Tacoma Public Library
1102 Tacoma Avenue South
Tacoma, WA 98402
(253) 292-2001

Citizens for a Healthy Bay
535 Dock Street, Suite 213
Tacoma, WA 98402
(253) 383-2429

WA Department of Ecology
Southwest Regional Office
300 Desmond Drive SE
Lacey, WA 98503

By appointment only:
Contact (360) 407-6365
Susan.Baxter@ecy.wa.gov or

Ecology's Toxics Cleanup Website
<https://fortress.wa.gov/ecy/gsp/Sitepage.aspx?csid=5897>

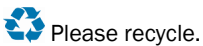
Facility Site ID #: 34114562



DEPARTMENT OF
ECOLOGY
State of Washington

PO Box 47775

Olympia, WA 98504-7775



Port of Tacoma Parcel 88 Pierce County, WA

Proposed Removal from the Hazardous Sites List

Public Comment Period:

May 1 — June 2, 2014

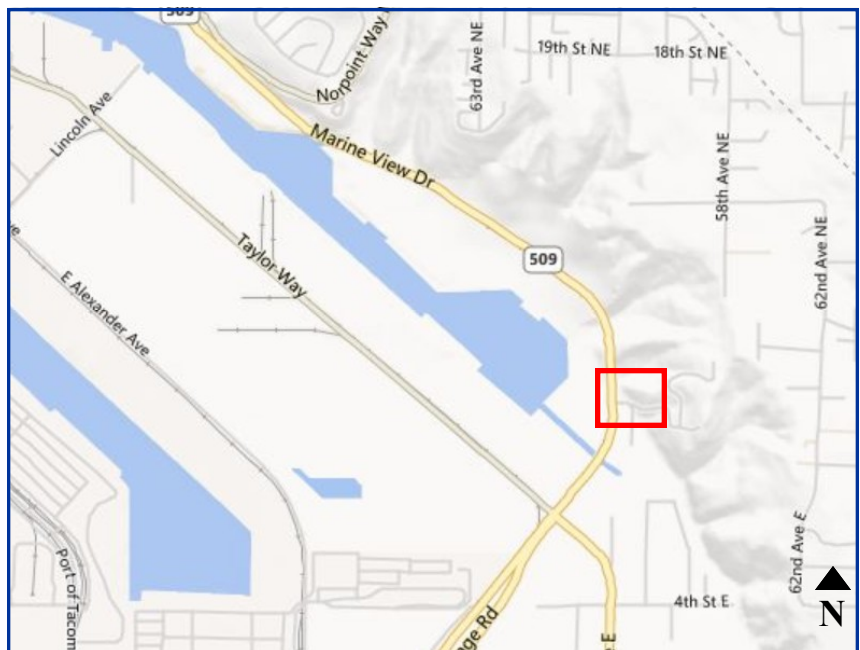
Facility Site ID #: 34114562

If you need this document in a format for the visually impaired, call reception at (360) 407-6300.

Persons with hearing loss, call 711 for Washington Relay Service. Persons with a speech disability call 877-833-6341.

What is the Hazardous Sites List?

The Hazardous Sites List includes sites that Ecology has assessed for their potential risk to human health and the environment. Sites must go through cleanup and meet state standards before Ecology can remove them from the list.



Parcel 88 is located at 1621 Marine View Drive, Tacoma.