

Tacoma Smelter Plume Soil Safety Program Vassault Park

May 19, 2014

Vassault Park Neighborhood Meeting



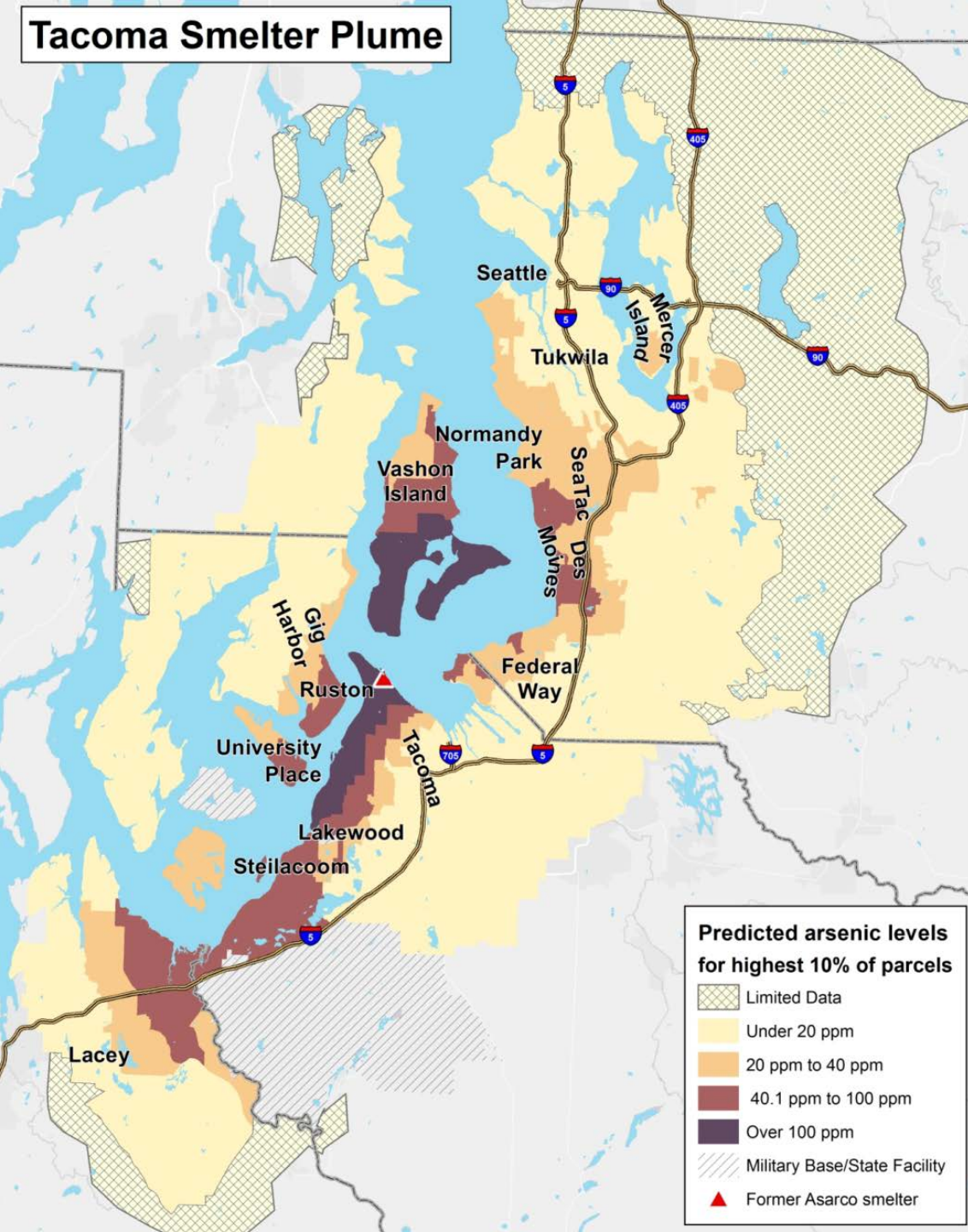
DEPARTMENT OF
ECOLOGY
State of Washington



What are we going to cover?

- Tacoma Smelter Plume contamination
- Healthy Actions
- Soil Safety Program
- **Two goals of the Vassault Park project**
 - Remove contaminated soils
 - Improve drainage
- Yard Program summer 2014 work

Tacoma Smelter Plume



Tacoma Smelter Plume

State cleanup levels
Arsenic = 20 ppm
Lead = 250 ppm

Healthy Actions

When working or playing **outside**

- ✓ Wear gloves for gardening
- ✓ Wash fruits and vegetables
- ✓ Build raised beds
- ✓ Cover bare patches of dirt



Inside the home

- ✓ Wash hands
- ✓ Take off shoes before coming inside
- ✓ Clean toys
- ✓ Damp dust and vacuum



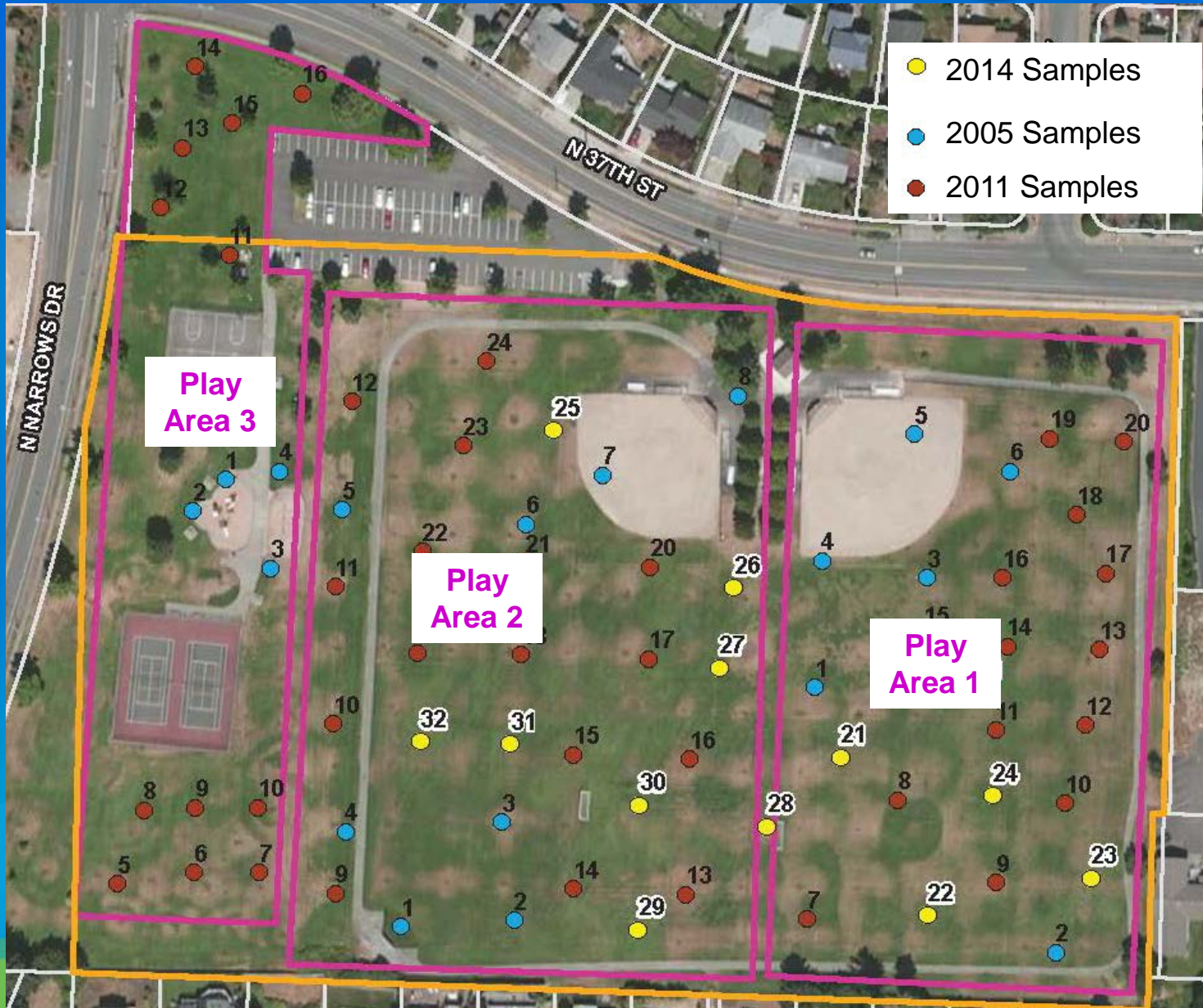
The Soil Safety Program

Free program for play areas at existing:

- Schools
- Licensed childcares
- Parks
- Camps
- Multi-family public housing



Vassault Park Sampling

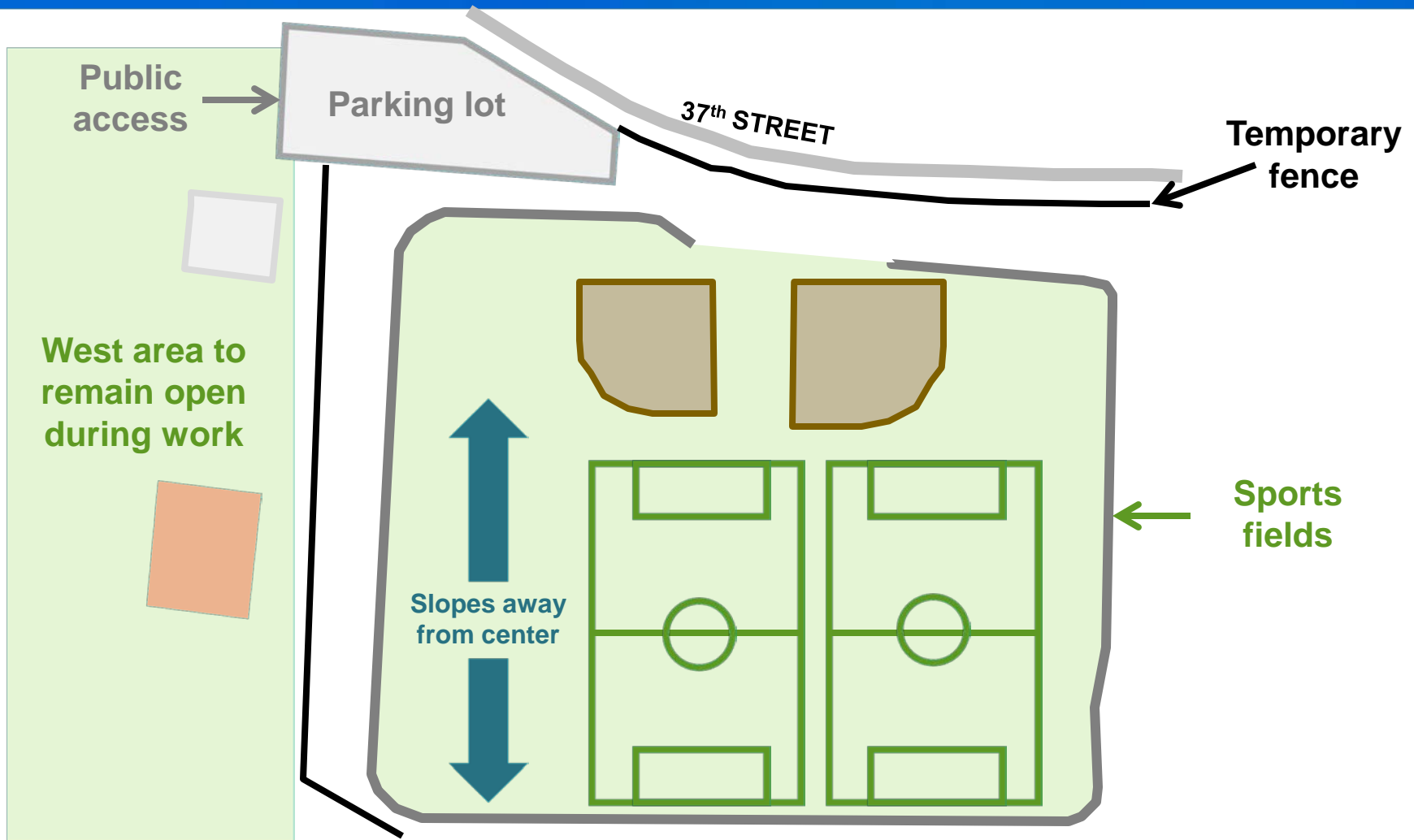


Vassault Park Sampling

Play Area		Depth (inches)	Average Arsenic	Maximum Arsenic	Cleanup needed?
Cleanup levels			20 ppm	40 ppm	
1*	East field	0–6	105 ppm	217 ppm	Yes
		6–12	83 ppm	122 ppm	Yes
2*	West field	0–6	116 ppm	260 ppm	Yes
		6–12	83 ppm	170 ppm	Yes
3	Playground	0–6	6 ppm	8 ppm	No

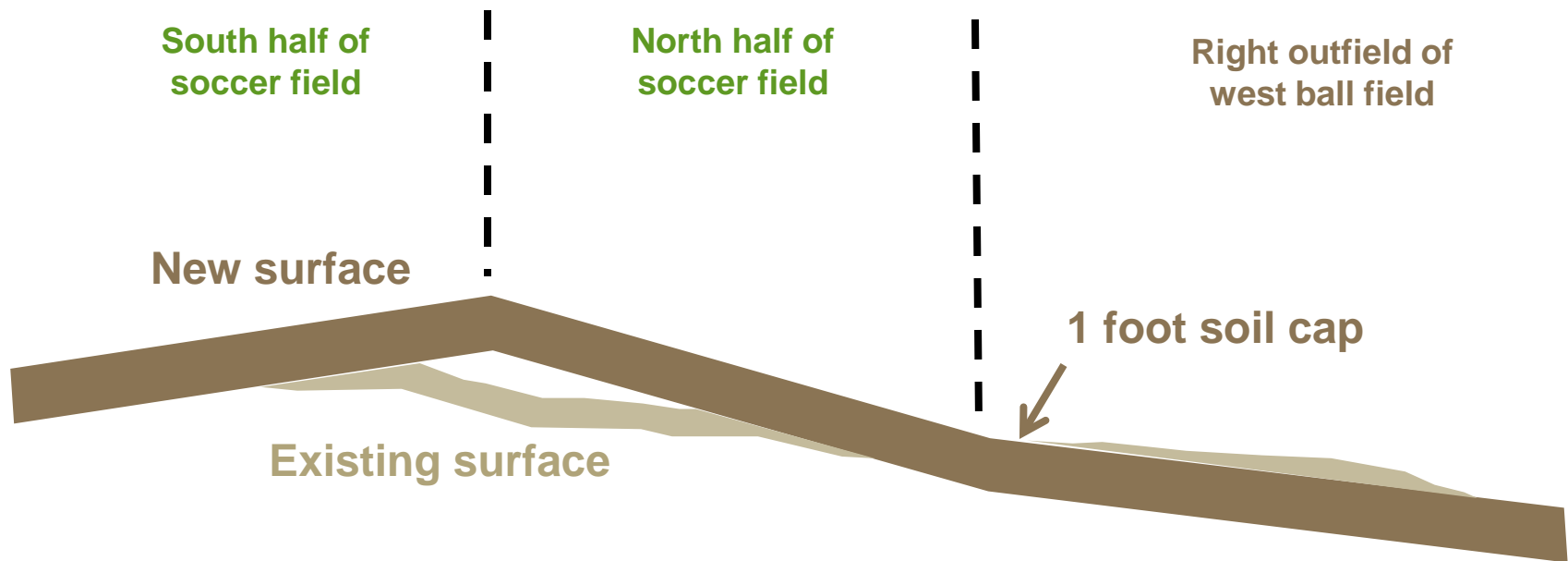
* Based on 2011 and 2014 samples only.

Soil Safety Action Plan



Soil Safety Action Plan

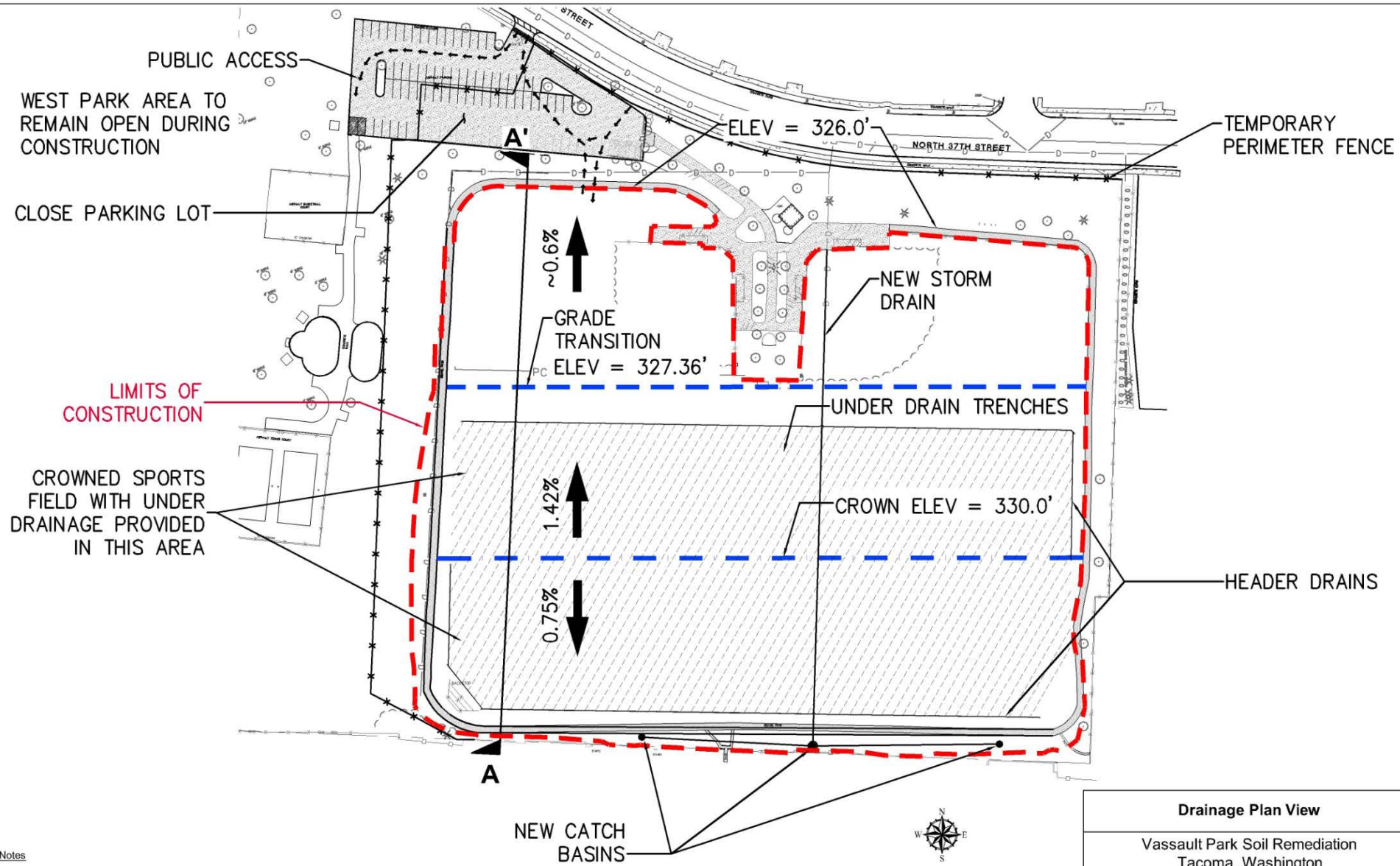
Field cross section (not to scale)



Metro Parks Drainage Improvements



Drainage Improvements



Drainage Plan View

Vassault Park Soil Remediation
Tacoma, Washington

Vassault Soil Safety Timeline

Fields Close

- June 18, 2014

Construction Starts

- Late June to early July 2014

Construction Ends

- September 30, 2014

Fields Closed for Grass to Grow

- October 2014 - 2015

Throughout

- Tennis courts, playground open

Upcoming Soil Safety Program Work with Metro Parks (2015)

- Point Defiance Play Area
- Fort Nisqually
- Optimist
- Baltimore

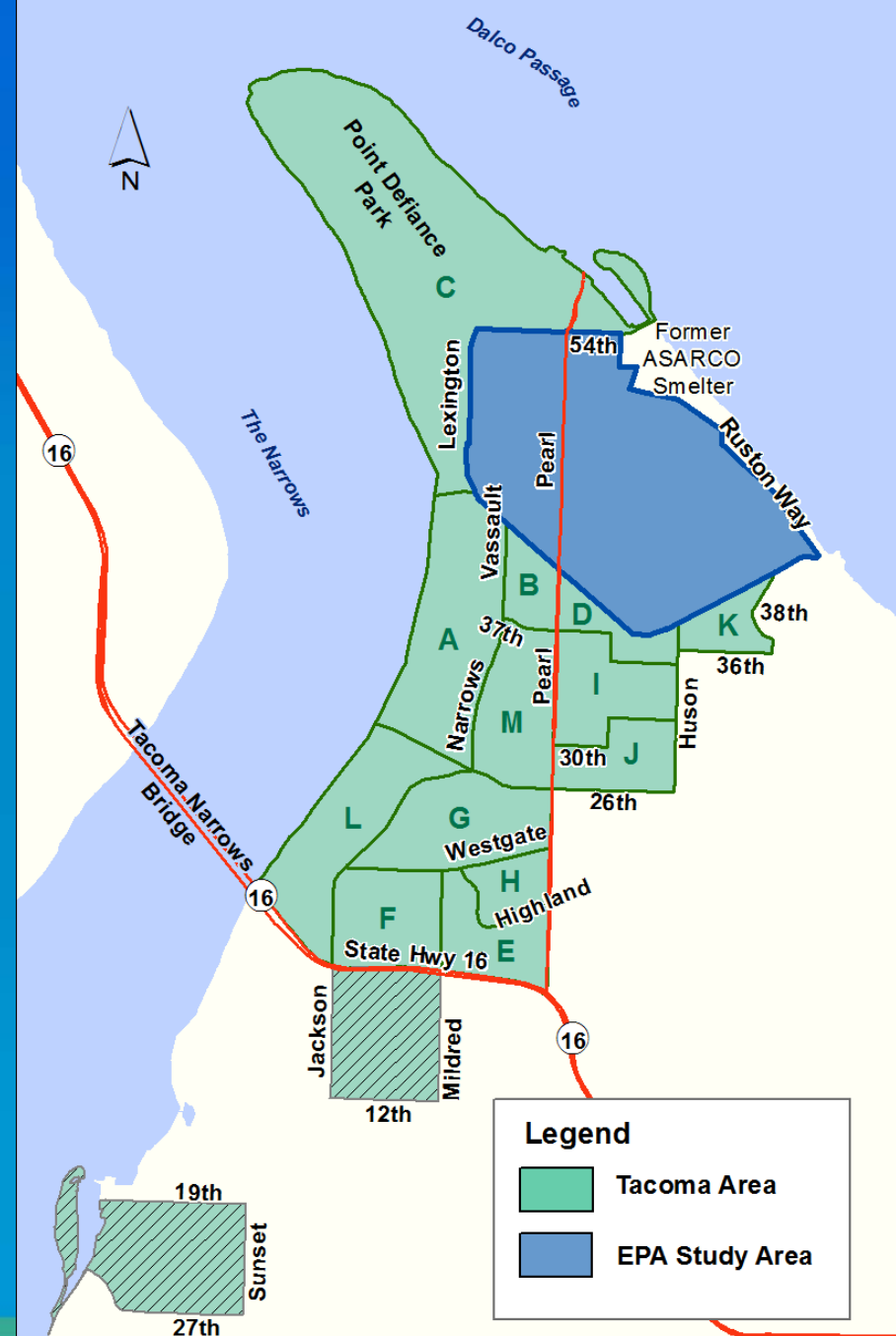
Yard Sampling and Cleanup Program

- Existing residential
- State-led
- Voluntary

Action Levels

Average arsenic = 100 ppm

Average lead = 500 ppm



Cleanup Schedule Tacoma & Ruston

2014

- Cleanup: 55 yards
- Sampling: 750 yards

2015

- Cleanup: 60+ yards
- Sampling: 750 yards

2016 - 2021

- Cleanup: Up to 150 yards a year
- Sampling: Finish by 2016

Summer 2014 Yard Cleanups



Yard Program Cleanup Public Meeting

Tuesday, June 17
6:30 – 8:30 p.m.
Point Defiance
Elementary

Yard Sampling

- Sign up now
- Working neighborhood by neighborhood
- Arsenic in Soil Database

<https://fortress.wa.gov/ecy/areispublic/>

Yard Sampling or Health Related Questions

Tacoma Pierce County Health Department

(253) 798-3503

DirtAlert@tpchd.org



Construction Related Questions

John Zinza

Ecology Field Coordinator

(360) 407-6249

John.Zinza@ecy.wa.gov

Roger Stanton

Metro Parks Tacoma Project Lead

(253) 305-1082

RogerS@tacomaparks.com

Ecology Message Hotline

(360) 407-7688 (press 2)