

## Draft Site Reports and Cleanup Plan Available for Public Comment

The Department of Ecology (Ecology) invites you to comment on proposed cleanup plans for the Industrial Petroleum site. The site is located at 1117 and 1120 West Bay Drive NW in Olympia.

### Ecology Wants Your Comments

Ecology is accepting comments from **September 4 – October 6, 2014** on these draft documents:

- **Remedial Investigation (RI) Report** — Describes the type and extent of contamination at the site.
- **Feasibility Study (FS)** — Evaluates possible cleanup options.
- **Draft Cleanup Action Plan (CAP)** — Describes the proposed cleanup.
- **State Environmental Policy Act (SEPA) review**—Describes the potential environmental impact of the cleanup work.
- **Agreed Order**— A legal agreement that requires the Atlantic Richfield Corporation (ARCO) to clean up the site.

You can review and comment on them at locations listed to the right.

### Site Contamination

Investigations from 1999 - 2001 found petroleum hydrocarbons and related contamination in soil and groundwater on the west part of the site. This was cleaned up in 2002 - 2003 (see below).

Some contamination remains in soil on the east part of the site (see map on page 3). Investigations from 2001 - 2013 found petroleum hydrocarbons, carcinogenic polycyclic aromatic hydrocarbons (cPAHs), and naphthalenes above cleanup levels.

### Cleanup of West Part of Site

The owner of Industrial Petroleum Distributors cleaned up the part of the site west of West Bay Drive in 2002 - 2003. They:

- Demolished buildings and the concrete slabs for above-ground fuel storage tanks.
- Removed and disposed of petroleum-contaminated soil.
- Sampled soil and groundwater to confirm cleanup.

However, the area east of West Bay Drive needs more cleanup. ARCO has now developed a cleanup plan for that area.

### Comments Accepted

**September 4–October 6, 2014**

#### Send Comments and Technical Questions to:

Steve Teel, Site Manager  
Department of Ecology  
SWRO Toxics Cleanup Program  
P.O. Box 47775  
Olympia, WA 98504-7775  
Phone: (360) 407-6247  
Steve.Teel@ecy.wa.gov

#### Public Involvement Questions:

Diana Smith  
Public Involvement Coordinator  
Phone: (360) 407-6255  
Diana.Smith@ecy.wa.gov

### DOCUMENT REVIEW LOCATIONS

Olympia Timberland Library  
313 8th Avenue SE  
Olympia, WA 98501  
(360) 352-0595

WA Department of Ecology  
Southwest Regional Office  
300 Desmond Drive SE  
Lacey, WA 98503  
By appointment only:  
Contact Susie Baxter,  
Susan.Baxter@ecy.wa.gov or  
(360) 407-6365

#### Ecology's Toxics Cleanup Website

<https://fortress.wa.gov/ecy/gsp/Sitepage.aspx?csid=4240>

Facility Site ID #: 1436

### Why Cleanup Matters

Decades of industrial, municipal, and naturally occurring pollution have damaged the quality and ecology of Puget Sound. In 2007, Ecology launched an investigation of Budd Inlet through the Puget Sound Initiative.

**One of the Initiative's objectives is to clean up contaminated sites within one-half mile of Puget Sound.** This cleanup will help reduce pollution and restore habitat and shorelines in Puget Sound.

### Cleanup Around Budd Inlet

Ecology is working to clean up contaminated sites around Budd Inlet (see map below). This will help reduce the amount of toxins in Budd Inlet and the Sound. For more information visit

[www.ecy.wa.gov/programs/tcp/sites\\_brochure/psi/buddInlet/psi\\_buddInlet.html](http://www.ecy.wa.gov/programs/tcp/sites_brochure/psi/buddInlet/psi_buddInlet.html)



- |                          |                         |
|--------------------------|-------------------------|
| 1. West Bay Marina       | 6. Port Peninsula       |
| 2. Hardel Mutual Plywood | 7. Cascade Pole         |
| 3. Reliable Steel        | 8. East Bay             |
| 4. Industrial Petroleum  | Redevelopment           |
| 5. Solid Wood            | 9. Budd Inlet Sediments |

### Cleanup Plan for East Part of Site

Under the proposed plan, ARCO will clean up the part of the site east of West Bay Drive by:

- Sampling soil in the yellow dashed area shown on the map on page 3. Sampling will identify the final area where soil will be removed.
- Excavating (digging out) contaminated soil. Contaminated soil will be sent to a landfill. At least 370 and up to 2,225 cubic yards of soil will be removed (see map).
- Backfilling the area with clean soil.

### What Happens Next?

1. At the end of the comment period, Ecology will review and respond to comments we received.
2. If needed, we will make changes to the RI report, FS, or CAP based on public comments. We will then sign the agreed order.
3. ARCO is currently planning to start final cleanup activities during Fall 2014.

### Site Background

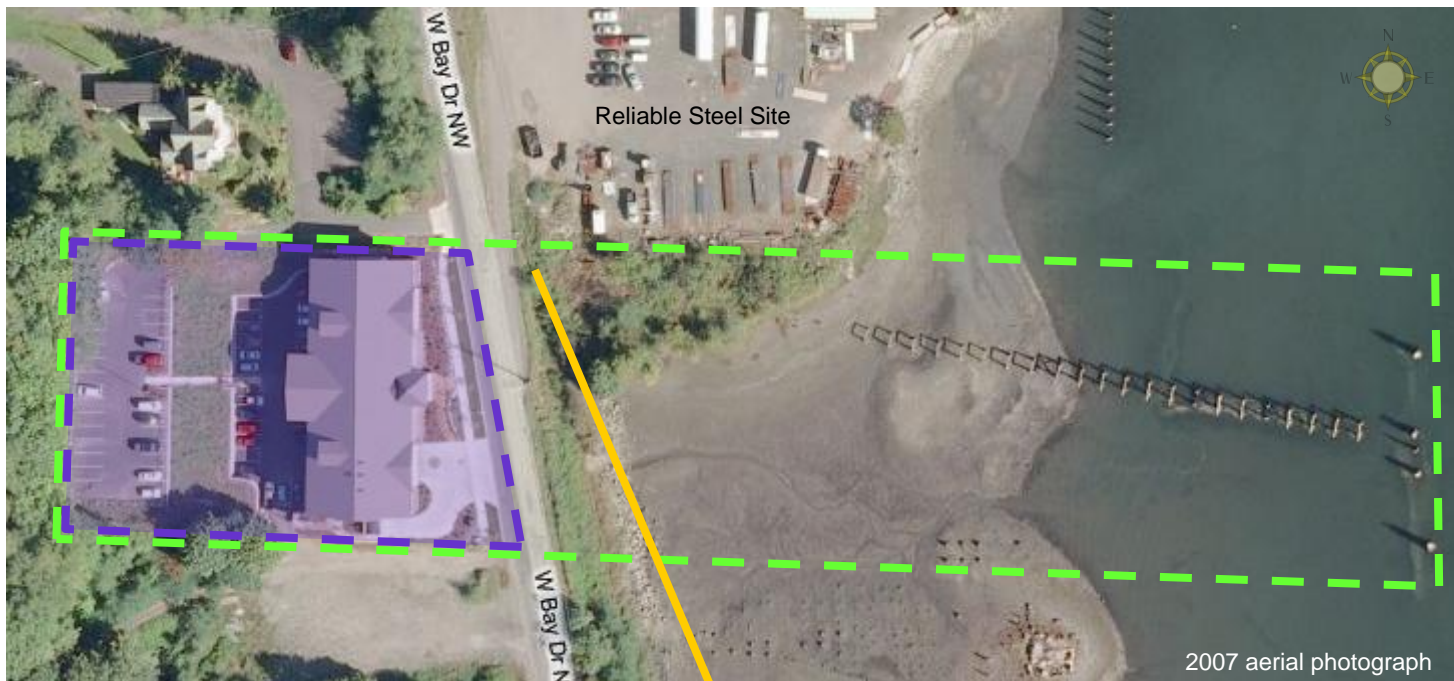
In the early 1950s, ARCO developed a bulk fuel storage and distribution facility on the site. It had eight above-ground storage tanks on the west (upland) side of West Bay Drive. A pipeline carried fuel from barges in Budd Inlet to the tanks.






In 1977, ARCO sold the property. The new owners leased it, and later sold it to Industrial Petroleum Distributors. The site then stored waste oil through the early 1990s. Leaks and spills from the pipeline and tanks contaminated soil and groundwater with petroleum hydrocarbons.

In 2000, we entered into an agreed order with the owner of Industrial Petroleum Distributors (called the Trust) and ARCO to investigate the site and evaluate cleanup options. In 2003, the Trust finished cleaning up the part of the site west of West Bay Drive.

In 2012 we entered into a new agreed order with ARCO. It required ARCO to finish investigating the site and to develop a draft plan for finishing cleanup.

**Industrial Petroleum Study and Cleanup Areas**



Legend	
2012 Agreed Order Study Area	
Part of Site Cleaned Up in 2002 - 2003	
<b>Proposed Final Cleanup Area</b>	
Area with suspected contaminated soil (maximum excavation area)	
Areas with confirmed contaminated soil (minimum excavation area)	
Sampling locations for confirming other soil to be excavated	





DEPARTMENT OF  
**ECOLOGY**  
State of Washington

PO Box 47775

Olympia, WA 98504-7775

**Save paper and join our email list for Budd Inlet cleanup projects!**

Please send an email to [Diana.Smith@ecy.wa.gov](mailto:Diana.Smith@ecy.wa.gov) with the subject line "Budd Inlet email list." In the message, let us know the mailing address you would like removed.

Please recycle.

**Industrial Petroleum Distributors  
Olympia, WA**

**Ecology seeks public comment on draft site reports and cleanup plan**

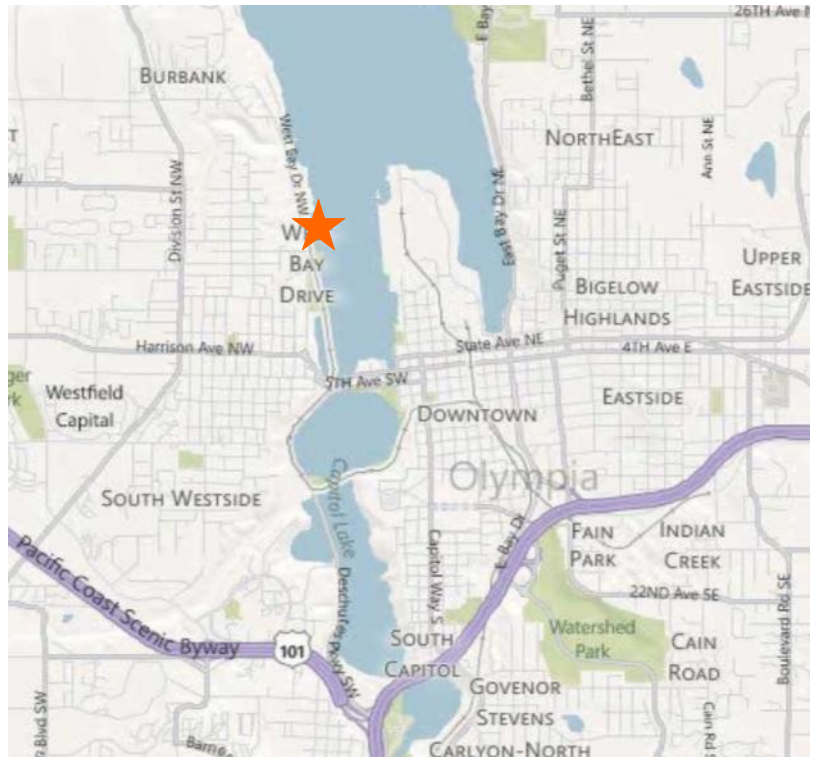
**Public Comment Period:**

**September 4 — October 6, 2014**

**Facility Site ID #: 1436**

To request ADA accommodation for disabilities, or printed materials in a format for the visually impaired, call Ecology at (360) 407-6300.

Persons with impaired hearing may call Washington Relay Service at 711. Persons with speech disability may call TTY at 877-833-6341.



Industrial Petroleum, 1117 and 1120 West Bay Drive NW, Olympia