

Cleanup Documents Available for Public Comment and Public Meeting Planned

The Department of Ecology is entering into an Agreed Order (legal agreement) with the Port of Olympia (port), the city of Olympia (city), and the LOTT Clean Water Alliance (LOTT) to continue the investigation and cleanup of the East Bay Redevelopment site. The 12.9-acre site is currently made up of eight parcels and is generally located at 315 Jefferson NE (map on page 3).

In May 2010, the city and LOTT purchased two parcels on the East Bay site. As property owners, they are now potentially liable persons (PLPs) and responsible for cleanup. The port, the city, and LOTT are all parties to the new cleanup agreement. This Agreed Order will replace an older agreement between the port and Ecology.

The new Agreed Order will require:

- Completion of Interim Action (partial cleanup) work on parcels 4 and 5. This action includes soil excavation and installation of a cap over areas of contaminated soil.
- A memo proposing the site boundary.
- A Remedial Investigation and Feasibility Study report. This report will outline the nature and extent of contamination and examine cleanup remedies.
- A draft Cleanup Action Plan describing the proposed final cleanup actions.

After the Interim Action is completed, the city will develop parcel 5 into the new Children's Hands On Museum and LOTT will develop parcel 4 into a public plaza.

The city and LOTT completed a State Environmental Policy Act (SEPA) checklist for the proposed Interim Action. The SEPA looks at the potential impacts of the project on the surrounding environment. Ecology reviewed the checklist and determined that the action was not likely to have significant negative impacts (a Determination of Non-Significance). The checklist and determination are both available for public comment along with the Agreed Order.

Ecology Wants Your Input!

Ecology is asking for your comments on several documents. You are invited to:

- **Review** the Agreed Order, Interim Action Work Plan, and SEPA Determination and Checklist at the repository locations listed to the right.

**Public Comment Period
July 6 - August 9, 2010**

**Public Meeting
July 29, 2010**

Send comments and technical questions to:

Steve Teel, Project Manager
WA Department of Ecology
SWRO Toxics Cleanup Program
P.O. Box 47775
Olympia, WA 98504-7775
Phone: (360) 407- 6247
E-mail: Steve.Teel@ecy.wa.gov

For information about public involvement or the meeting:

Meg Bommarito
Phone: (360) 407- 6255
E-mail: Meg.Bommarito@ecy.wa.gov

To Review cleanup site documents:

**WA Department of Ecology
Southwest Regional Office**
300 Desmond Drive SE
Lacey, WA 98503

By appointment only:
Contact Debbie Nelson at
Debbie.Nelson@ecy.wa.gov or
(360) 407-6365

Olympia Timberland Library
313 8th Avenue SE
Olympia, WA 98501
(360) 352-0595

Ecology's Web Site
http://www.ecy.wa.gov/programs/tcp/sites/eastBayRedev/eastBayRedev_hp.htm

Facility Site ID# 5785176



East Bay Redevelopment

- **Send** your written comments to Ecology for consideration. **Comments will be accepted until August 9, 2010.**
- **Attend** a public meeting on July 29 at the Olympia Center (222 Columbia Street NW). More information can be found on page 4.

Site Background

From the late 1880s until 1968, the site was used for timber-related industries. Since then, the site has been used for commercial and light industrial activities and storage. Previous users included a sawmill, planing mill, shingle mill, and plywood manufacturers. The St. Paul and Tacoma Lumber Mill operated on parcels 4 and 5 from 1942-68.

Historic activities on the site caused soil and groundwater contamination. Total petroleum hydrocarbons (TPHs), carcinogenic polycyclic aromatic hydrocarbons, dioxins and furans, and metals were detected above state cleanup levels in soil. Investigations also revealed TPHs and metals in groundwater above state cleanup levels or screening levels.

The Port of Olympia entered the Voluntary Cleanup Program in January 2007. The site was transferred to a formal cleanup process in February 2008 to expedite the cleanup and to allow for greater Ecology oversight. See box to the right for detailed project history.

For more information about the redevelopment planned for this site, please contact:

Port of Olympia

Joanne Snarski
Environmental Program & Project Manager
Phone: (360) 528-8020
Email: JoanneS@portolympia.com

City of Olympia / Parcel 5

Jay Burney
Assistant City Manager-Special Projects
Phone: (360) 753-8740
Email: jburney@ci.olympia.wa.us

LOTT Alliance / Parcel 4

Eric Hielema, *Senior Wastewater Engineer*
Phone: (360) 528-5705
Email: erichielema@lottcleanwater.org



East Bay Redevelopment Cleanup History

JANUARY 2007

- The Port of Olympia (port) enters into Ecology's Voluntary Cleanup Program to begin investigation and cleanup of the property.

FEBRUARY 2008

- The port enters into the formal cleanup program to continue cleanup of the site.

OCTOBER 2008

- Ecology and the port enter into an Agreed Order to conduct a Remedial Investigation and Interim (partial cleanup) Action.
- **Public comment period for the Agreed Order and a SEPA Determination.**

MARCH 2009

- Ecology and the port finalize work plans for the Remedial Investigation and an Interim Action.
- **Public comment period and meeting for the Interim Action and Remedial Investigation Work Plans.**

JUNE 2009

- The port applies for National Pollutant Discharge Elimination System Permit to manage stormwater produced during the planned Interim Cleanup Action.
- **Public hearing for the NPDES permit.**

DECEMBER 2009

- The port removes contaminated soil from a portion of the site associated with infrastructure construction work.

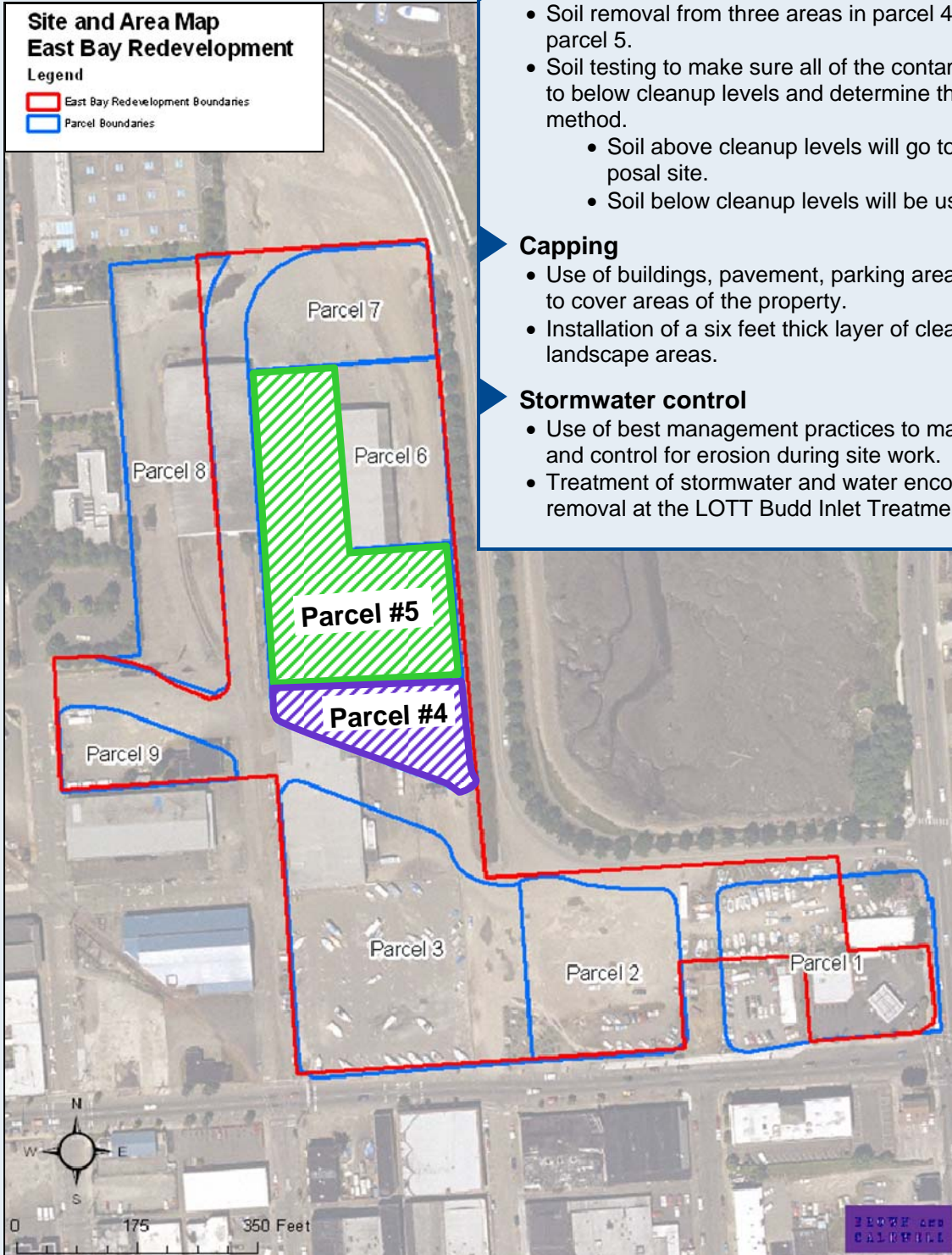
JUNE 2010

- The city of Olympia and LOTT purchase two parcels that are part of the East Bay Redevelopment cleanup site.

Site and Area Map East Bay Redevelopment

Legend

- East Bay Redevelopment Boundaries
- Parcel Boundaries



The city and LOTT are proposing to complete the following cleanup activities:

Soil removal

- Soil removal from three areas in parcel 4 and two areas in parcel 5.
- Soil testing to make sure all of the contamination is removed to below cleanup levels and determine the best disposal method.
 - Soil above cleanup levels will go to an approved disposal site.
 - Soil below cleanup levels will be used as fill on site.

Capping

- Use of buildings, pavement, parking areas, and landscaping to cover areas of the property.
- Installation of a six feet thick layer of clean soil to cover landscape areas.

Stormwater control

- Use of best management practices to manage stormwater and control for erosion during site work.
- Treatment of stormwater and water encountered during soil removal at the LOTT Budd Inlet Treatment Plant.



DEPARTMENT OF
ECOLOGY

State of Washington

PO Box 47775

Olympia, WA 98504-7775

East Bay Redevelopment Olympia, WA

Cleanup Documents Available for Public Comment

**Public Comment Period
July 6 - August 9, 2010**

Public Meeting

July 29, 2010

Facility Site ID #: 5785176

If you need this publication in an alternative format, call (360) 407-6300. Persons with hearing loss, call 711 for Washington Relay Service. Persons with speech disability call (877) 833-6341.

Ecology Invites You to a Public Meeting!

Where: Olympia Center, Room B
222 Columbia St NW, Olympia

When: July 29, 2010
6:30 - 8:30 pm

Meeting Agenda:

6:30 - 7:00 PM	Open House
7:00 - 8:00 PM	Presentation and Q/A Session
8:00 - 8:30 PM	Open House

Ecology staff members will be available for one-on-one discussion and to answer your questions. Light refreshments will be provided.

