

**Public Review and Comment Invited**

The Washington State Department of Ecology (Ecology) wants your input on the Draft Remedial Investigation and Feasibility Study Reports and other documents for the Olympic View Sanitary Landfill Site. The documents will be available for public review beginning October 29, 2010. See the box on the right for details about where to review documents and submit comments.

The Olympic View Sanitary Landfill (OVSL) is located west of the Bremerton National Airport and adjacent to the Port of Bremerton's Olympic View Industrial Park. The OVSL occupies 65 acres of a 500 acre site. The landfill closed in 2003. In January 2001, Ecology entered into an Agreed Order with Olympic View Sanitary Landfill, Inc. to complete a Remedial Investigation and Feasibility Study for contaminated groundwater at the site.

Olympic View Sanitary Landfill, Inc. has:

- Prepared draft Remedial Investigation and Feasibility Study reports for public review to present the results of the investigation and evaluate the cleanup alternatives.

Ecology has:

- Prepared a Draft Cleanup Action Plan, a State Environmental Policy Act (SEPA) determination, and an updated Public Participation Plan for public review.

**Site Background**

The OVSL operated as a municipal solid waste landfill since 1963 under various private ownerships. Olympic View Sanitary Landfill, Inc., a subsidiary of Waste Management of Washington, Inc., is the current owner. Environmental monitoring of groundwater, surface water, gas and leachate has been conducted since 1975. The closed landfill is in a 30-year post-closure monitoring and maintenance period. The

**Comments Accepted**

**October 29, 2010 to November 29, 2010**

**Submit Comments and Technical Questions to:**

Madeline Wall - Site Manager  
Washington State Department of Ecology  
Northwest Regional Office – Waste 2 Resources Program  
3190 160<sup>th</sup> Avenue SE, Bellevue, WA 98008  
Phone: (425) 649-7015  
E-mail: madeline.wall@ecy.wa.gov

**DOCUMENT REVIEW LOCATIONS****Kitsap Regional Library, Port Orchard Branch**

87 Sidney Avenue, Port Orchard, WA 98366  
(360) 876-2224

**North Mason Timberland Library**

23081 NE State Route 3, Belfair, WA 98528  
(360) 275-3232

**Kitsap County Health District**

345 6<sup>th</sup> St, Suite 300, Bremerton, WA 98337  
Call for an appointment (360) 337-5672

**Washington State Department of Ecology****Northwest Regional Office**

3190 160<sup>th</sup> Ave SE, Bellevue, WA 98008  
Call for an appointment: Sally Perkins  
Phone: (425) 649-7190  
Fax: (425) 649-4450  
E-mail: sally.perkins@ecy.wa.gov  
Hours: Tuesday – Thursday  
8:00 AM – 12:00 PM and 1:00 PM – 4:30 PM

**Ecology's Website:**

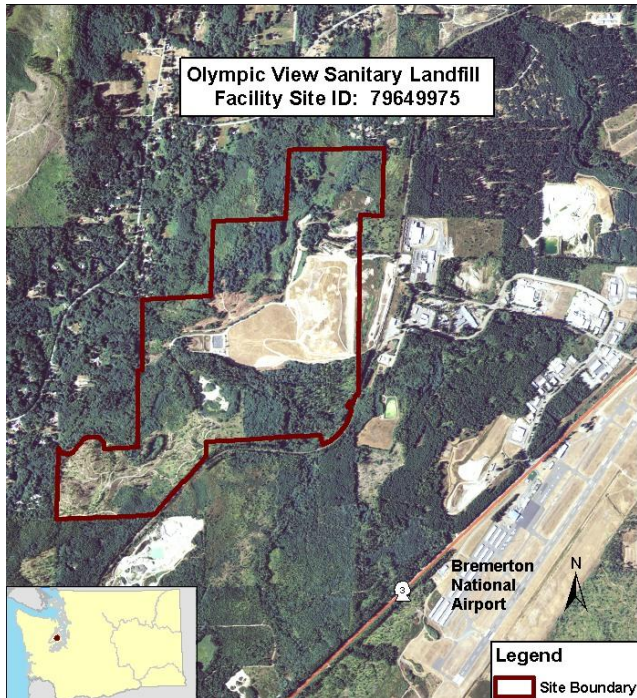
[http://www.ecy.wa.gov/programs/tcp/sites/olympicView/olympicView\\_hp.html](http://www.ecy.wa.gov/programs/tcp/sites/olympicView/olympicView_hp.html)

**Facility Site ID: # 79649975**

# Olympic View Sanitary Landfill Site

landfill conducts its post-closure activities under a solid waste permit issued by the Kitsap County Health District.

The site exceeds state groundwater quality standards for volatile organic compounds and metals. The groundwater contamination prompted investigations and improvements to operations at the landfill. The investigations led to an Agreed Order.



## Remedial Investigation Objectives

The Agreed Order required a Remedial Investigation report that summarized all existing field and technical information related to the site. The required information included: local geology and hydrogeology, an inventory of nearby domestic wells, cross-sections of the site, maps of groundwater monitoring well locations and measured groundwater elevations, groundwater flow, groundwater quality data, and identification of contamination sources.

To assess the effect of the landfill on wetlands along the western edge of the landfill property, the Agreed Order also required a wetlands investigation.

## Remedial Investigation Findings

The primary Remedial Investigation findings were:

- Engineered landfill closure systems are in place and continue to be maintained. These systems include bottom liners and impermeable cover systems, leachate and landfill gas collection and treatment systems, a stormwater management system, and an environmental monitoring network.
- The site is underlain by a regional aquifer of mostly sand and gravel, with lenses of silt and clay.
- Groundwater flows to the northwest and west toward the Union River Valley.
- Groundwater beneath the OVSL property contains the following contaminants at concentrations above state standards or risk-based levels:
  - Volatile organic compounds: 1,4-dichlorobenzene, 1,1-dichloroethane, cis-1,2-dichloroethene, ethyl ether, trichloroethene, and vinyl chloride
  - Metals: arsenic, iron, manganese
  - Ammonia
- The concentrations of these hazardous substances are generally stable or declining over time.
- The groundwater contamination is primarily beneath the waste and the onsite areas located immediately down gradient of the landfill.
- Private water wells surrounding the landfill were identified and many were sampled. Results provide strong evidence that no domestic wells are impacted by the site.
- Landfill gas was found outside of the refuse, but no gas has been detected offsite.

## Feasibility Study Objectives

The purpose of the Feasibility Study is to identify cleanup alternatives, analyze these alternatives, and present a selected alternative. The cleanup alternatives must meet the following requirements:

- Protect human health and the environment.

# Olympic View Sanitary Landfill Site

- Comply with state cleanup standards and relevant and appropriate requirements.

The Feasibility Study also provides information to develop the cleanup action plan.

## Feasibility Study Findings

To meet state cleanup standards, five different cleanup alternatives were considered:

1. Increased Inspection, Repair, and Operational Improvements
2. Landfill Gas Collection System Upgrades (includes Alternative 1)
3. Vadose Zone Gas Investigation and Extraction (includes Alternative 1 and 2)
4. Air Sparge Wall (includes Alternative 1 and 2)
5. Excavation and Offsite Re-Disposal of Old Barney White Landfill (includes Alternative 1 and part of 2)

The proposed alternatives were evaluated against several criteria, including protectiveness, permanence, effectiveness over the long-term, short-term risks, and implementability.

## Proposed Cleanup Actions

Ecology proposes Alternative 2 – Landfill Gas Collection System Upgrades – as the remedy for the site. The components of Alternative 2 include:

- Operate and maintain the existing source control and containment systems
- Repair, modify, and upgrade the landfill systems
- Install additional landfill gas extraction wells
- Monitor groundwater and soil gas
- Monitor the natural attenuation of contaminants
- Continue institutional controls

The Draft Cleanup Action Plan (DCAP) describes the cleanup actions, standards, and other requirements to be met at the Site. Ecology prepared the DCAP based on information collected

and evaluated during the Remedial Investigation and Feasibility Study at the Site.

Olympic View Sanitary Landfill, Inc. prepared a State Environmental Policy Act (SEPA, Ch. 43-21C FCW) checklist for the actions described in the DCAP. Ecology determined that the proposed actions do not have a significant adverse impact on the environment and issued a Determination of Non-Significance.

## What Happens Next?

After the 30-day public comment period, Ecology will review all comments received and make recommendations for any suggested changes. If no significant changes are necessary, the Remedial Investigation and Feasibility Study Reports and the Cleanup Action Plan will be final.

To ensure the cleanup actions will be implemented in a timely manner in accordance with MTCA and other applicable laws and regulations, Ecology and Olympic View Sanitary Landfill, Inc. will enter into an Agreed Order.

Ecology has not scheduled a public meeting. However, if ten or more people request a meeting during the comment period, Ecology will schedule one. Please contact Madeline Wall to request a meeting at [madeline.wall@ecy.wa.gov](mailto:madeline.wall@ecy.wa.gov) or by calling (425) 649-7015.





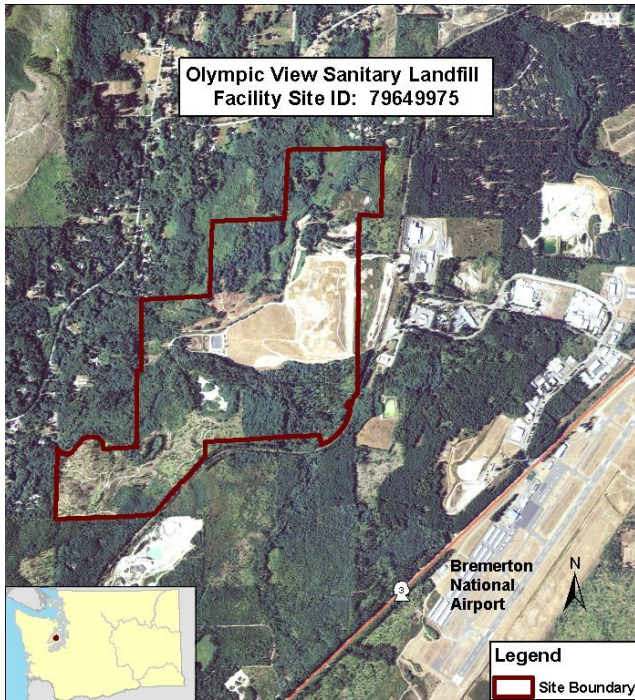


DEPARTMENT OF  
**ECOLOGY**  
State of Washington

3190 160<sup>th</sup> Ave SE  
Bellevue, WA 98008

PRSR STD  
US POSTAGE PAID  
WA STATE DEPT  
OF PRINTING 98501

Please recycle.



## Olympic View Sanitary Landfill Site Kitsap County, WA

Ecology wants your input on the Draft Remedial Investigation Report, Draft Feasibility Study Report, Draft Cleanup Action Plan (DCAP), and related documents available for public review and comment.

**Public Comment Period:**

**October 29, 2010 to November 29, 2010**

Facility Site ID #: 79649975

If you need this publication in an alternative format, please contact Madeline Wall at (425) 649 - 7015. Persons with hearing loss, call 711 for Washington Relay Service. Persons with speech disability call 877-833-6341.