



STATE OF WASHINGTON
DEPARTMENT OF ECOLOGY

PO Box 47600 • Olympia, WA 98504-7600 • 360-407-6000

711 for Washington Relay Service • Persons with a speech disability can call 877-833-6341

November 10, 2010

Mr. Ross W. Dunning, P.E.
Kennedy/Jenks Consultants
32001 32nd Avenue South, Suite 100
Federal Way, Washington 98001-9601

Re: No Further Action at the following Site:

- **Site Name:** Harborview Park Site (Great Northern BNRR Tank Farm)
- **Site Address:** 1621 Mukilteo Boulevard, Everett, WA 98203
- **Facility/Site No.:** 39982737
- **VCP Project No.:** NW1218

Dear Mr. Dunning:

The Washington State Department of Ecology (Ecology) received your request for an opinion on your independent cleanup of the Harborview Park Site facility (Site). This letter provides our opinion. We are providing this opinion under the authority of the Model Toxics Control Act (MTCA), Chapter 70.105D RCW.

Issue Presented and Opinion

Is further remedial action necessary to clean up contamination at the Site?

NO. Ecology has determined that no further remedial action is necessary to clean up contamination at the Site.

This opinion is based on an analysis of whether the remedial action meets the substantive requirements of MTCA, Chapter 70.105D RCW, and its' implementing regulations, Chapter 173-340 WAC (collectively "substantive requirements of MTCA"). The analysis is provided below.

Description of the Site

This opinion applies only to the Site described below. The Site is defined by the nature and extent of contamination associated with the following releases:

- Total Petroleum Hydrocarbons into the Soil.
- Polycyclic Aromatic Hydrocarbons (PAHs) into the Soil.

On May 14, 2010, the city of Everett, Department of Community and Economic Development, approved BNSF Railway Company's application for a Boundary Line Adjustment for this Site.



Mr. Ross W. Dunning, P.E.
November 10, 2010
Page 2 of 7

Following property line adjustment, the BNSF's Right-of-Way extends southward to include the hillside. The BNSF Harborview Park Site that is addressed by this No Further Action determination encompasses the upland bench area.

Enclosure A includes a detailed description/diagram and a city of Everett-approved Boundary Line Adjustment with a new legal description for this Site, as currently known to Ecology.

Please note a parcel of real property can be affected by multiple sites. At this time, we have no information that the parcel(s) associated with this Site are affected by other sites.

Basis for the Opinion

This opinion is based on the information contained in the following documents:

1. GeoEngineers, Inc. *Preliminary Site Assessment Former Bunker C Fuel Oil Storage Site, Mukilteo, Washington*, May 15, 1997.
2. Kennedy/Jenks Consultants, *Site Investigation Report, Harborview Park Site, Everett, Washington*, September 1999.
3. Kennedy/Jenks Consultants, *Site Investigation Report and Preliminary Remedial Evaluation, Harborview Park*, January 19, 2004.
4. Kennedy/Jenks Consultants, *Sediment Sampling and Analysis Plan, Harborview Park, Everett, Washington*, May 2005.
5. Kennedy/Jenks consultants, *Remedial Action Plan, Harborview Park Site, Everett, Washington*, July 2005.
6. Kennedy/Jenks Consultants, *Sediment Investigation Report, Harborview Park, Everett, Washington*, January 2006.
7. Kennedy/Jenks Consultants, *Site Closure Report, Harborview Park Site, Everett, Washington*, January 2008.

Those documents are kept in the Central Files of our Northwest Regional Office (NWRO) for review by appointment only. You can make an appointment by calling the NWRO resource contact at 425-649-7190.

This opinion is void if any of the information contained in those documents is materially false or misleading.

Analysis of the Cleanup

Ecology has concluded that **no further remedial action** is necessary to clean up contamination at the Site. That conclusion is based on the following analysis:

1. Characterization of the Site.

Ecology has determined your characterization of the Site is sufficient to establish cleanup standards and select a cleanup action. The Site is described above and in **Enclosure A**.

2. Establishment of cleanup standards.

Ecology has determined the cleanup levels and points of compliance you established for the Site meet the substantive requirements of MTCA. Please refer to the *Remedial Action Plan, Harborview Park Site, Everett, Washington, July 2005*, for cleanup standards.

Cleanup levels are as follows:

- Diesel-range organics and heavy oils – 2,000 milligrams per kilogram, Method A Soil Cleanup Levels for Unrestricted Land Uses.
- Total carcinogenic polycyclic aromatic hydrocarbons – 0.1 milligrams per kilogram using the toxicity equivalency methodology in WAC 173-340-708(8).

Soils protective of ground water – The point of compliance is throughout the Site.

Soils protective of direct contact – The point of compliance is throughout the Site from the ground surface to 15 feet below the ground surface.

Ground water – The point of compliance is throughout the Site from the upper-most level of the saturated zone extending vertically to the lowest-most depth that could potentially be affected by the Site.

The Site is zoned for Suburban Residential (R-S) by the city of Everett and is located adjacent to Harborview Park. The selected Method A for Unrestricted Land Uses for the Site soils is protective for users of the Site and Harborview Park.

3. Selection of cleanup action.

Ecology has determined the cleanup action (excavation of contaminated soils) you selected for the Site meets the substantive requirements of MTCA.

4. Cleanup.

Ecology has determined the cleanup you performed meets the cleanup standards established for the Site.

In 1996, GeoEngineers completed a Preliminary Site Investigation and concluded that petroleum hydrocarbon-impacted soil in the upland area appeared to be present in the upper two feet of soil, and that the vertical and lateral extent of the impact was not known. A black viscous petroleum product was analyzed, and the results indicated the product appears similar to weathered Bunker C or a mixture of diesel and heavy oil.

In 1999, Kennedy/Jenks conducted an investigation that included advancing 11 test pits to a depth of approximately three feet in the upland area; 10 test pits to a depth of approximately three feet in the lowland area along the base of the slope adjacent to the drainage ditch, and 14 hand-auger borings to a depths of one to two feet along the shoreline at the ordinary high water mark.

Diesel and oil-range hydrocarbons were detected at concentrations of 20,000 milligrams per kilogram in the sample from an upland test pit SWT. Total aliphatic hydrocarbons and total aromatic hydrocarbons were detected at concentrations up to 49,000 and 250,000 milligrams per kilogram, respectively, from the upland test pits. Diesel and/or oil-range hydrocarbons were detected at concentrations up to 770 milligrams per kilogram in soil samples from five of the ten lowland test pits. Diesel and/or oil-range hydrocarbons were detected at concentrations up to 4,200 milligrams per kilogram in soil samples from seven of the 14 shoreline hand-auger borings.

In 2003, Kennedy/Jenks conducted a supplemental investigation of upland soils to evaluate the extent of petroleum-impacted soil in the vicinity of the wetland and further define the extent of the petroleum-impacted soil within 200 feet of the shoreline. A total of 46 hand-auger explorations were completed in the upland area. Diesel and oil-range hydrocarbons were detected at concentrations ranging between 11.6 milligrams per kilogram and 82,200 milligrams per kilogram in soil samples collected from depths ranging between one and two feet below ground surface. At three deeper borings, petroleum hydrocarbons were detected at concentrations up to 81,000 milligrams per kilogram. The results of the lowland area borings show petroleum-impacted soil at depths up to eight feet below ground surface. At boring B-8 near the vault, petroleum hydrocarbons were found at 19,000 milligrams per kilogram at a depth of two feet and 220 milligrams per kilogram at a depth of eight feet.

In 2005, Kennedy/Jenks conducted a surface sediment investigation at the Site. The objective is to evaluate surface sediment quality offshore from the Site. Two samples were collected from locations on the shoreline sampled in 1999 to confirm previous sample results. The sediment samples were analyzed for the full list of 47 Sediment Management Standards chemicals and five conventional parameters. All detected chemical concentrations for all analytes were below applicable cleanup screening levels.

In 2002, groundwater samples were collected from monitoring wells MW-1 and MW-2. MW-1 is located at the top of the slope downgradient from the former storage tanks, and MW-2 is located at the toe of the slope the drainage ditch downgradient from MW-1. Diesel and oil-range hydrocarbons were not detected in the samples. A second round of

groundwater samples was collected in 2007 during the final stages of site remediation. Diesel and oil-range hydrocarbons were not detected in the samples. No groundwater impacts from past Site uses have been identified based on the groundwater monitoring results.

Over 35,000 tons of petroleum-containing soil were excavated during two periods from the terrace and ditch adjacent to the tracks and were shipped offsite to Regional Disposal Company's landfill in Roosevelt, Washington, and Waste Management's Columbia Ridge, Oregon, landfill for disposal.

Following removal of petroleum-impacted soil, confirmation samples were collected to confirm that residual soils were below MTCA's Method A unrestricted soil cleanup standards. As necessary, additional soil was excavated, and confirmation sampling was re-performed.

Work was halted at the Site in January 2006 when sample analysis results indicated arsenic concentration above cleanup level in the rock backfill placed at the upland terrace. After reaching an agreement with Iron Mountain Quarry, the source of the backfill, the arsenic-containing backfill was removed and replaced with clean crushed rock.

Excavation depths in the upland terrace ranged from approximately two feet to over 30 feet. A portion of the access road leading to the lowland portion of the Site was removed and relocated to allow for excavation of a wooden trough found containing Bunker C material. Soil and ballast were excavated to depths ranging from one to three feet from the ditch adjacent to the tracks in the lowland portion of the Site, and an oil/water separator previously discovered in the ditch was removed.

Thirty-eight soil confirmation samples for petroleum hydrocarbons and polycyclic aromatic hydrocarbons analyses were collected from the upland terrace. All sample results are below the MTCA Method A soil cleanup levels for unrestricted land uses for diesel and oil-range hydrocarbons and carcinogenic PAHs derived using the toxicity equivalency method.

Nine soil confirmation samples for petroleum hydrocarbons and polycyclic aromatic hydrocarbons analyses were collected from the lowland ditch area adjacent to the railroad tracks. All nine samples are below the MTCA Method A soil cleanup levels for diesel and oil-range hydrocarbons. Four of the soil samples are below the MTCA Method A soil cleanup level of 0.1 milligrams per kilogram for unrestricted land uses for carcinogenic PAHs. Five of the soil samples exceeded the unrestricted land uses for carcinogenic PAHs. The toxicity equivalent concentrations range from 0.21 to 1.20 milligrams per kilogram. The residual materials are located at 1.5 feet to 2.5 feet below ground surface. These concentrations are less than the Method A level of 2.0 milligrams per kilogram for industrial properties.

An approximately ½-acre wetland was identified in the western portion of the Site during initial site investigation. A site visit conducted by the U.S. Army Corps of Engineers determined the wetland was isolated and, therefore, not within the Corps' jurisdiction. After discussion with Ecology's Shorelands and Environmental Assistance Program, it was determined that Ecology maintained jurisdiction over the wetland. On October 7, 2005, Ecology's NWRO issued Administrative Order No. 2849 for excavation of contaminated soil and filling the wetland. The wetland was monitored for two years following excavation and backfilling activities in accordance with the Administrative Order. Wetland conditions were not observed to be present during that period, thus confirming the wetland was supported by the presence of the Bunker C material inhibiting downward movement of the surface water. Based on the absence of wetland conditions, on July 30, 2007, Ecology issued a determination that the conditions of the Administrative Order were met and no wetland mitigation will be required at the Site.

A post-cleanup land survey completed by BNSF identified insufficient Right-of-Way at this location. To allow for maintenance of the adjacent hillside, BNSF submitted to and received from the city of Everett a property line adjustment for this site. Following property line adjustment, the BNSF's Right-of-Way extends southward to include the hillside. The BNSF Harborview Park Site that is addressed by this No Further Remedial Action determination encompasses the upland bench area.

Listing of the Site

Based on this opinion, Ecology will initiate the process of removing the Site from our lists of hazardous waste sites, including:

- Hazardous Sites List.
- Confirmed and Suspected Contaminated Sites List.

That process includes public notice and opportunity to comment. Based on the comments received, Ecology will either remove the Site from the applicable lists or withdraw this opinion.

Limitations of the Opinion

1. Opinion does not settle liability with the state.

Liable persons are strictly liable, jointly and severally, for all remedial action costs and for all natural resource damages resulting from the release or releases of hazardous substances at the Site. This opinion **does not**:

- Resolve or alter a person's liability to the state.
- Protect liable persons from contribution claims by third parties.

To settle liability with the state and obtain protection from contribution claims, a person must enter into a consent decree with Ecology under RCW 70.105D.040(4).

Mr. Ross W. Dunning, P.E.
November 10, 2010
Page 7 of 7

2. Opinion does not constitute a determination of substantial equivalence.

To recover remedial action costs from other liable persons under MTCA, one must demonstrate that the action is the substantial equivalent of an Ecology-conducted or Ecology-supervised action. This opinion does not determine whether the action you performed is substantially equivalent. Courts make that determination. See RCW 70.105D.080 and WAC 173-340-545.

3. State is immune from liability.

The state, Ecology, and its officers and employees are immune from all liability, and no cause of action of any nature may arise from any act or omission in providing this opinion. See RCW 70.105D.030(1)(i).

Termination of Agreement

Thank you for cleaning up the Site under the Voluntary Cleanup Program (VCP). This opinion terminates the VCP Agreement governing this project (#NW 1218).

For more information about the VCP and the cleanup process, please visit our web site: www.ecy.wa.gov/programs/tcp/vcp/vcpmain.htm. If you have any questions about this opinion or the termination of the Agreement, please contact me by phone at 360-407-6991 or e-mail at cye461@ecy.wa.gov.

Sincerely,



Chung Ki Yee
Land Cleanup Unit
Toxics Cleanup Program

Enclosure: A – Description and Diagrams of the Site

cc: Bruce Sheppard, Manager, Environmental Remediation, BNSF Railway Company
Mark Engdahl, Assistant Manager, Environmental Remediation, BNSF Railway Company
Gerry Ervine, Land Use Manager, City of Everett
Dolores Mitchell, VCP Financial Manager (without enclosure)

Enclosure A

Description and Diagrams of the Site

Site Description

The Harborview Park Site is located on a hillside adjacent to Harborview Park and Possession Sound in the city of Everett in Section 35, Township 29 North, Range 4 East. The Site address is 1621 Mukilteo Boulevard, Everett, WA 98203. The topography of the Site slopes steeply to the north toward Possession Sound. Four sets of active railroad tracks run adjacent to the shoreline beneath the Site. Above and south of the siding tracks, a steep vegetated slope rises toward Mukilteo Boulevard. Upslope from the tracks, an area has been cut from the bank to form a nearly level bench in the slope that is bounded on the south and west by the hillside, and on the north and east by a soil berm.

In 1863, the first steam-powered sawmill in Snohomish County was built on the upper portion of the Site. The Great Northern Railroad Company obtained the right-of-way at the Site in 1891. The bermed bench area of the Site was used as a containment area for three above-ground storage tanks until the 1950s. Bunker C fuel oil was offloaded from ships at a former pier that extended into Possession Sound to the three above-ground tanks for storage pending distribution to railcars along the southern track. After the railroad switched from steam engines to diesel engines around 1950, the three above-ground storage tanks were removed from the Site. The majority of the Site has remained undeveloped since the removal of the tanks.

Historical Bunker C handling, storage, and transfer activities have apparently resulted in impacts to soil in the upland and lowland areas of the Site. The results of investigation activities conducted between 1996 and 2003 identified the presence of petroleum hydrocarbon compounds identified as representative of Bunker C in soil at the Site.

Based on results of field investigations, pockets of Bunker C-contaminated soil are present at depths up to 15 feet below ground surface in the upland area and at depths up to eight feet below ground surface in the lowland area. Based on groundwater sample results, impacts to groundwater at the Site are significantly less than regulatory criteria. Attached is Figure 4 from the Remedial Action Plan showing the horizontal extent of contamination located at the Site.

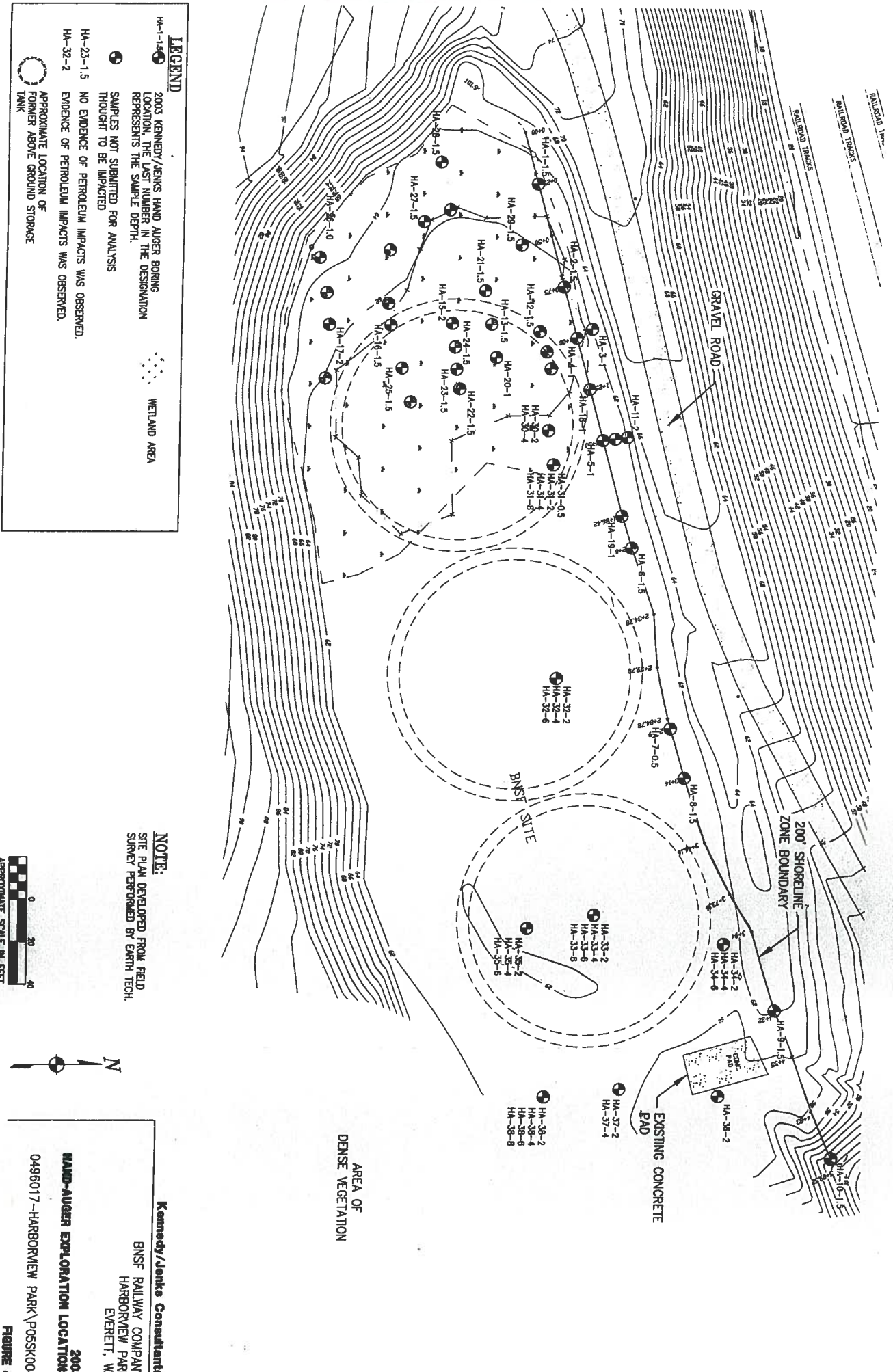
On May 14, 2010, the city of Everett, Department of Community and Economic Development, approved BNSF Railway Company's application for Boundary Line Adjustment for this Site. This adjustment created New Lot 2 and New Lot 1 from the original parcels at the Site.

New Lot 2 consists of the upland terrace of the Site with an area of 406,582 square feet and is the Site addressed by this No Further Action determination. Thirty-eight soil confirmation samples for petroleum hydrocarbons and polycyclic aromatic hydrocarbons analyses were collected from the upland terrace. All sample results are below the MTCA Method A soil cleanup levels for unrestricted land uses for diesel and oil-range hydrocarbons and carcinogenic PAHs derived using the toxicity equivalency method.

The New Lot 1 includes the lowland ditch area adjacent to the railroad tracks with an area of 93,208 square feet. This New Lot 1 is incorporated into the BNSF Railway Company's Right-of-Way and is not addressed by this No Further Action determination. Five of the nine soil confirmation samples exceeded the unrestricted land uses for carcinogenic PAHs, but are less than the Method A level of 2.0 milligrams per kilogram for industrial properties.

Attached in Enclosure A are:

1. Figure 4 from the Remedial Action Plan showing the horizontal extent of contamination at the Site.
2. City of Everett Boundary Line Adjustment No. 10-002. The Site (New Lot 2) and legal description are as shown in the figures.
3. A survey map documenting the residual contamination area located within New Lot 1 which is now incorporated into BNSF Railway Company Right-of-Way.



LEGEND

- HA-1-1.5 2003 KENNEDY/JENKS HAND AUGER BORING LOCATION. THE LAST NUMBER IN THE DESIGNATION REPRESENTS THE SAMPLE DEPTH.
- SAMPLES NOT SUBMITTED FOR ANALYSIS THOUGHT TO BE IMPACTED
- HA-23-1.5 NO EVIDENCE OF PETROLEUM IMPACTS WAS OBSERVED.
- HA-32-2 EVIDENCE OF PETROLEUM IMPACTS WAS OBSERVED.
- APPROXIMATE LOCATION OF FORMER ABOVE GROUND STORAGE TANK
- WETLAND AREA



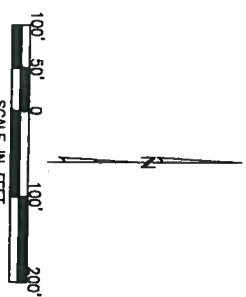
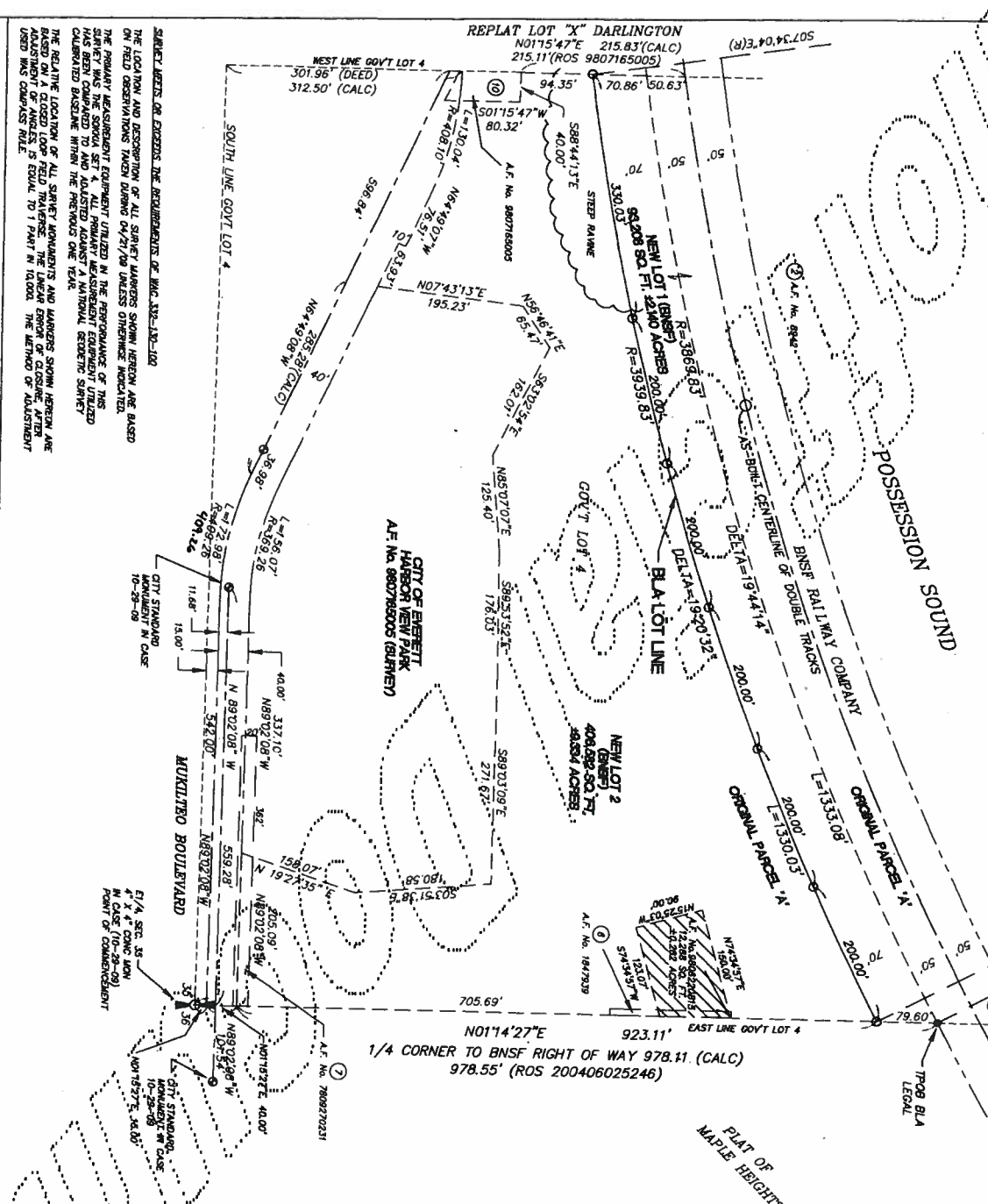
NOTE:
 SITE PLAN DEVELOPED FROM FIELD SURVEY PERFORMED BY EARTH TECH.

Kennedy/Jenks Consultants
 BNSF RAILWAY COMPANY
 HARBORVIEW PARK
 EVERETT, WA

2003 HAND-AUGER EXPLORATION LOCATIONS
 0496017-HARBORVIEW PARK POSSK004
FIGURE 4

CITY OF EVERETT
 BLA. No. 10-002
 EVERETT, WASHINGTON

RECORDING NO. VOL./PAGE
 PORTION OF GOVERNMENT LOT 4, IN THE NE4, SECTION 35, TOWNSHIP 29 NORTH, RANGE 04 EAST, W.M.



- LEGEND:**
- SET REBAR & CAP LS 36798
 - ⊙ FOUND MONUMENT IN CASE AS NOTED
- REFERENCES:**
- RECORD OF SURVEY (A.F. No. 9807165005)
- LINE TYPES:**
- RIGHT OF WAY CENTERLINE
 - UPLAND BOUNDARY LINE
 - RIGHT OF WAY LINE
 - EASEMENT LINE
 - PLATTED LOT LINE
 - BLA LOT LINE

NOTES:

1. THIS SURVEY COMPLETES WITH ALL STANDARDS AND CONDITIONS OF THE SURVEY RECORDING ACT AS PER CHAPTER 65.09 RCW AND CHAPTER 36-150 WAC.
2. ALL MONUMENTS VESTED DURING MAY 2008 UNLESS OTHERWISE NOTED.
3. THE PRIMARY MEASUREMENT EQUIPMENT UTILIZED IN THIS SURVEY WAS A LEICA TSM 1101 1014 STATIONARY SVI 62320.
4. BASED ON BEARING, WASHINGTON STATE PLANE COORDINATE SYSTEM (NORTH ZONE TWO EBY9).

SURVEY METHOD OR EXCEEDS THE REQUIREMENTS OF WAC 36-150-100
 THE LOCATION AND DESCRIPTION OF ALL SURVEY MARKERS SHOWN HEREON ARE BASED ON FIELD OBSERVATIONS TAKEN DURING 04/21/04 UNLESS OTHERWISE INDICATED.
 THE PRIMARY MEASUREMENT EQUIPMENT UTILIZED IN THE PERFORMANCE OF THIS SURVEY WAS A LEICA TSM 1101 1014 STATIONARY SVI 62320. THE EQUIPMENT HAS BEEN CALIBRATED AND ADJUSTED AGAINST NATIONAL EARTH SCIENCE CENTER CALIBRATED BASELINE WITHIN THE PREVIOUS ONE YEAR.
 THE RELATIVE LOCATION OF ALL SURVEY MARKERS AND MONUMENTS SHOWN HEREON ARE BASED ON A CLOSED LOOP FIELD TRAVERSE. THE LAMAR BEARING COMPASS METHOD USED WAS COMPASS RULE.

AUDITORS CERTIFICATE
 FILED FOR RECORD THIS DAY OF 20 AT M
 IN BOOK OF AT PAGE AT THE REQUEST OF
 DOUGLAS A. HARTMAN
 MANAGER SUPPLY OF RECORDS

LAND SURVEYOR'S CERTIFICATE
 THIS LOT LINE ADJUSTMENT CORRECTLY REPRESENTS A SURVEY MADE BY ME OR UNDER MY DIRECTION IN CONFORMANCE WITH STATE AND COUNTY STATUTES.
 JANUARY 2010
 Douglas A. Hartman
 DOUGLAS A. HARTMAN
 CERTIFICATE NO. 36798



DIANE HARTMAN & ASSOCIATES, INC.
 Surveyors
 18928 WOODHILL-REDMOND ROAD, B-107 (425) 483-5355
 WOODHILL WASHINGTON 98072 FAX (425) 483-4650

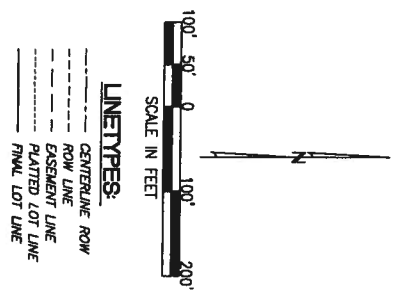
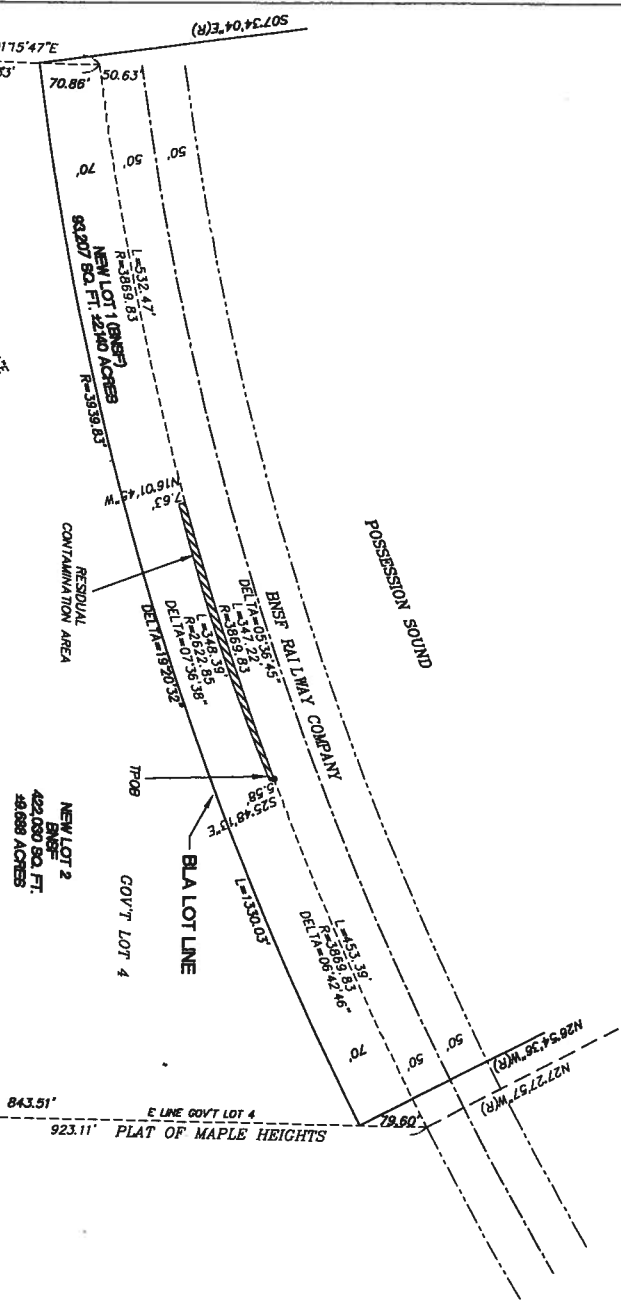
AUDITORS FILE NO. 20100514 5008

BOUNDARY LINE ADJUSTMENT FOR: BNSF RAILWAY COMPANY

DRAWN BY	DATE	JOB NO.	SCALE
DAM	03/28/2010	08-1814	1"=100'
CHKD. BY	DATE	SHEET	
DH	03/28/2010	3	3

RECORDING NO. VOL./PAGE

PORTION OF SW4, SW4, SEC. 18, TWP. 23 NORTH, RANGE 05 EAST, W.M. AND ALSO WITHIN A PORTION OF GOVERNMENT LOT 14, IN S4D SECTION 18, TWP. 23 N. R. 5 E. W.M.



LEGAL DESCRIPTION:

AREA OF RESIDUAL SOIL CONTAMINATION ABOVE AITCA METHOD A SOIL CLEANUP LEVELS FOR UNRESTRICTED LAND USES, AND BELOW AITCA METHOD A SOIL CLEANUP LEVELS FOR INDUSTRIAL PROPERTIES. THAT PORTION OF GOVERNMENT LOT 4, SECTION 35, TOWNSHIP 23 NORTH, RANGE 4 EAST OF THE WILMETTE MERIDIAN, DESCRIBED AS FOLLOWS: COMMENCING AT THE EAST QUARTER CORNER OF SAID SECTION; 3 THENCE NORTH 01°43'27" EAST, ALONG THE EAST LINE OF SAID GOVERNMENT LOT 4, AS SHOWN ON THE PLAT OF MAPLE HEIGHTS, PLAT 23, RECORDS OF SHERMAN COUNTY, WASHINGTON, A DISTANCE OF 140 FEET TO A POINT ON THE HIGHWAY CENTER LINE AS DESCRIBED IN STATE OF WASHINGTON DATED JULY 18, 1908, AND ACCORDING TO THE 1924 UNDER AUDITOR'S FILE NO. 1106982, RECORDS OF SAID COUNTY; THENCE NORTH 01°43'27" EAST ALONG SAID EAST LINE, A DISTANCE OF 843.51 FEET TO THE INTERSECTION WITH THE NORTH BARRON OF ADJUTED THENCE CONTINUE NORTHERLY ALONG SAID LINE, A DISTANCE OF 823.11 FEET TO THE SOUTH FLANK OF BNSF RAILWAY COMPANY'S RIGHT OF WAY WHICH THE RADUS POINT LIES NORTH 27°29' 00" WEST, A 100-FOOT DISTANCE OF 3,888.33 FEET; THENCE SOUTHWESTERLY ALONG THE ARC, THROUGH A CENTRAL ANGLE OF ONE (1) DEGREE, A DISTANCE OF 28.92 FEET TO THE END OF THE CURVE, AND THENCE LEAVING THE SOUTH BARRON OF SAID RIGHT OF WAY SOUTH AND NORTHWEST, A DISTANCE OF 438 FEET TO THE POINT OF CURVE OF A NORTH 22°00'00" WEST, A RADIAL DISTANCE OF 2,252.00 FEET; THENCE WESTERLY ALONG THE ARC, THROUGH A CENTRAL ANGLE OF 0°39'30" A DISTANCE OF 344.39 FEET; THENCE SOUTHWESTERLY ALONG THE RIGHT OF WAY, A DISTANCE OF 724.75 FEET TO THE RADUS POINT LIES NORTH 03°04'45" WEST, A RADIAL DISTANCE OF 3,422.00 FEET TO THE CENTRAL ANGLE OF 0°39'30" WEST, A DISTANCE OF 342.22 FEET TO THE POINT OF BEGINNING. CONTAINING 2,726 SQUARE FEET OR 0.06 ACRES, MORE OR LESS.

- NOTES:**
1. THIS SURVEY COMPLETES WITH ALL STANDARDS AND PROCEDURES OF THE SURVEY RECORDING ACT AS PER CHAPTER 28.09 RCW AND CHAPTER 28-100 WAC.
 2. ALL MONUMENTS VISITED DURING MAY 2008 UNLESS OTHERWISE NOTED.
 3. EQUIPMENT: THE PRIMARY MEASUREMENT EQUIPMENT UTILIZED IN THE PERFORMANCE OF THIS SURVEY WAS A LEICA TDS1101 TOTAL STATION, SV# 624790.
 4. BASIS OF BEARING: WASHINGTON STATE PLANE COORDINATE SYSTEM.
 5. THIS SURVEY WAS PERFORMED WITHOUT THE BENEFIT OF A TITLE REPORT. THERE MAY BE EASEMENTS OR OTHER DOCUMENTS OF RECORD THAT EFFECTUALLY AFFECT THIS PARCEL THAT WOULD BE DISCLOSED BY THE PROVISIONMENT OF A CURRENT TITLE REPORT.

ASSESSOR'S CERTIFICATE

LAND SURVEYOR'S CERTIFICATE



DUANE HARTMAN & ASSOCIATES, INC.
Surveyors

BNSF RAILWAY COMPANY
RESIDUAL CONTAMINATION AREA
HARBOR VIEW PARK

FILED FOR RECORD THIS DAY OF 20 AT M
IN BOOK OF AT PAGE AT THE REQUEST OF
DOUGLAS A. HARTMAN
MANAGER

THIS LOT LINE ADJUSTMENT CORRECTLY REPRESENTS A SURVEY MADE BY ME OR UNDER MY DIRECTION IN CONFORMANCE WITH STATE AND COUNTY STATUTES.
JANUARY, 2010



18928 WOODMOUNT-RENOVO ROAD, B-107 (425) 483-5355
HOODVILLE WASHINGTON 98072 FAX (425) 483-4850

DWN. BY	DATE	JOB NO.	SCALE
DAH	01/14/2010	09-1614	1"=100'
CHD. BY	DATE	SHEET	
	01/14/2010	2	OF 2