

SOURCE: 7.5-minute USGS topographic quadrangles, Metaline Falls and Boundary Dam, Washington, 1986

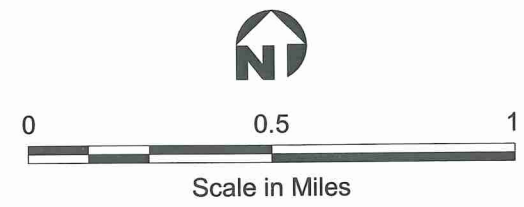
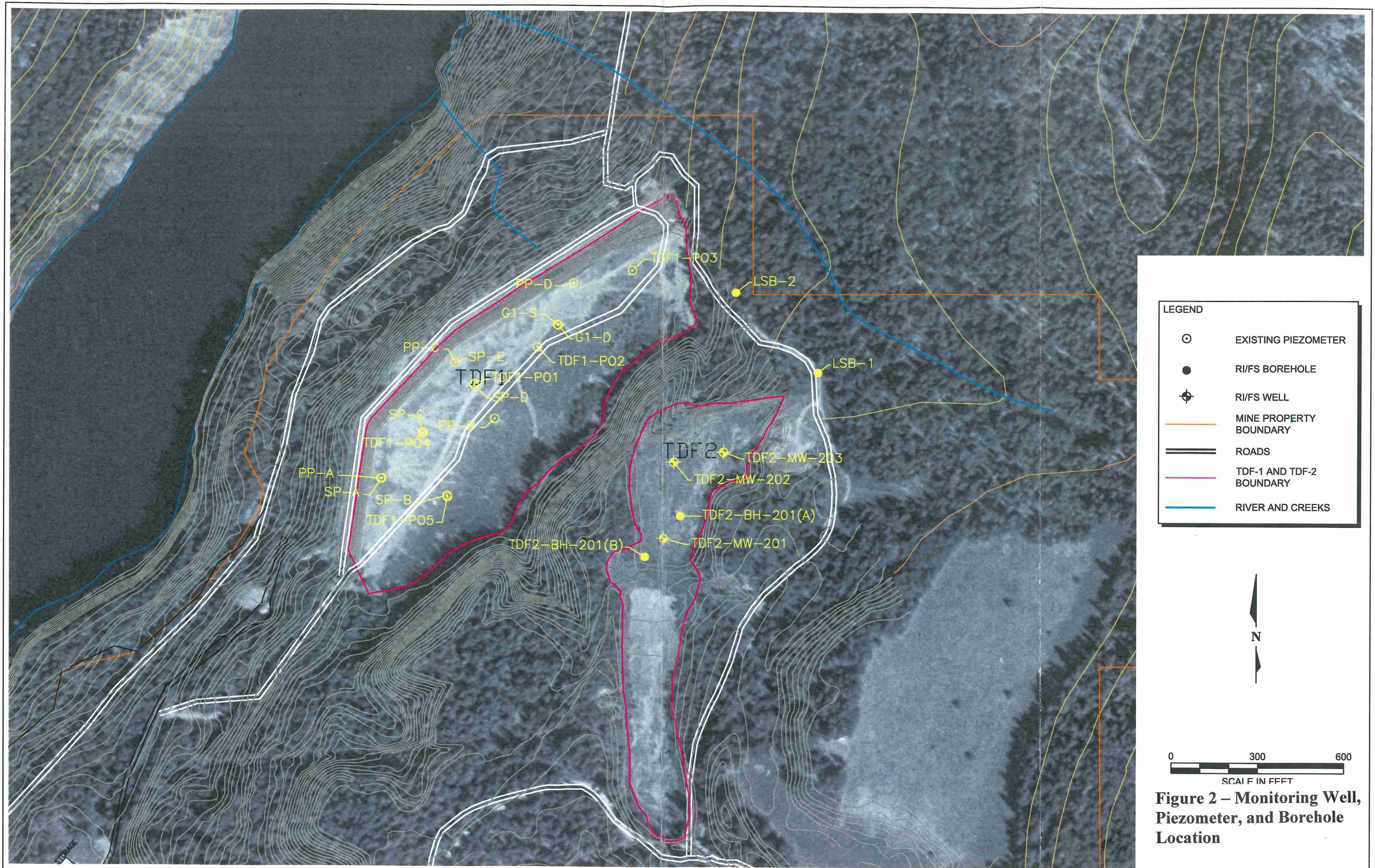
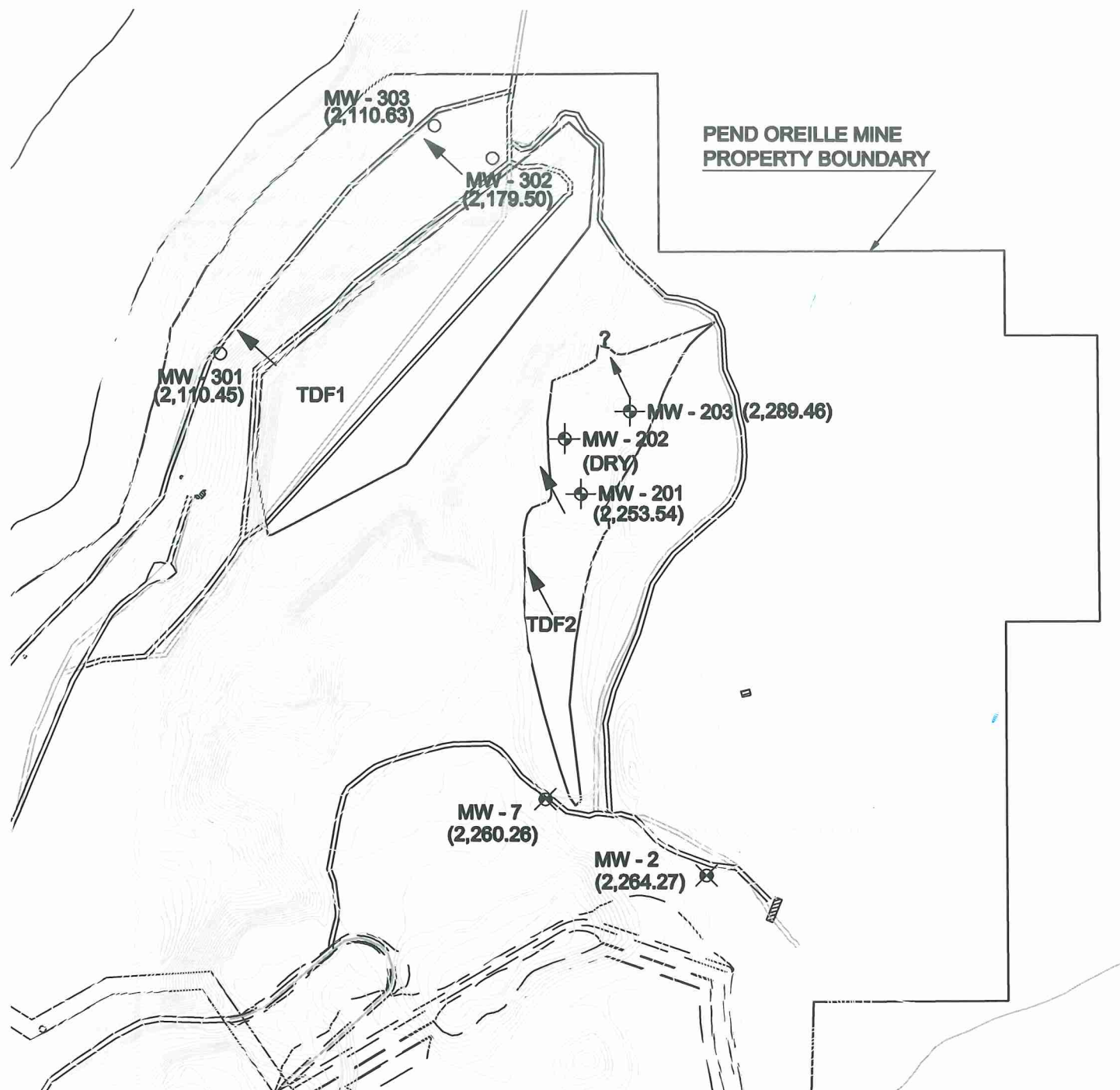


Figure 1  
Site Location Map

From URS Report

Pend Oreille Mine





CADD basemap provided to URS by Teck Washington Incorporated



0 250 500  
Approximate Scale in Feet

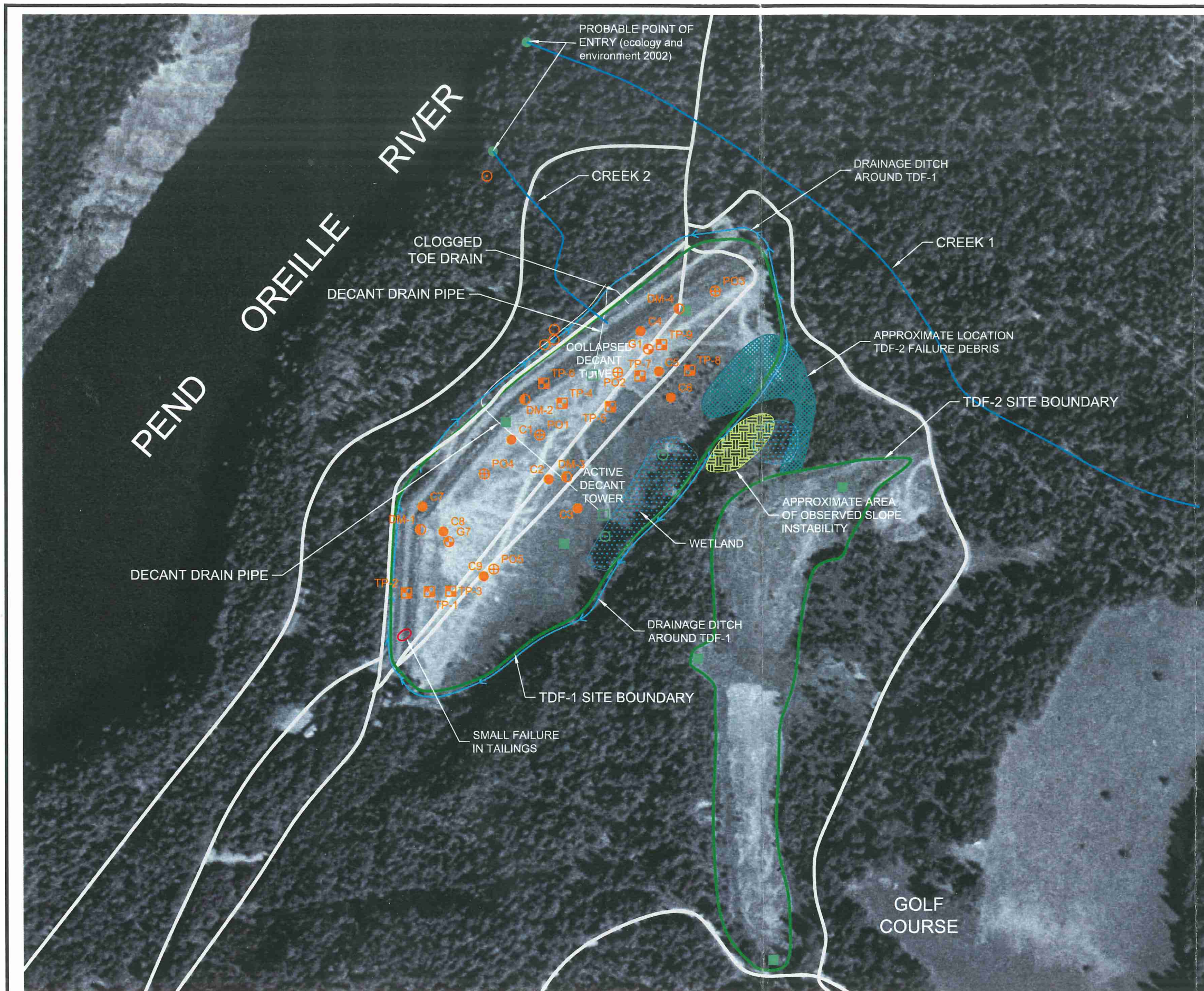
LEGEND	
	Monitoring Well, Golder Associates 2005
	Monitoring Well, Knight Piesold 1993
	Monitoring Well, URS 2008
	Groundwater Flow Direction

Figure 3

**Groundwater Elevations and Monitoring Well Locations -**  
All locations are approximate

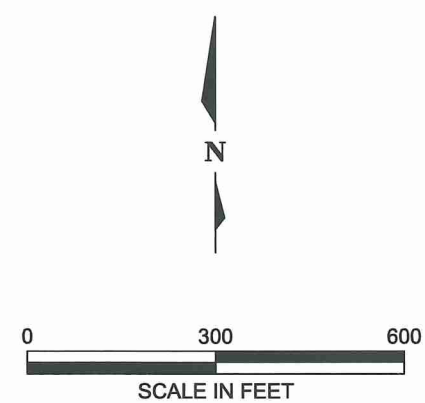
TDF-1 and TDF-2

From URS Report



**LEGEND**

- ⊕ PIEZOMETER BY U.S. DEPARTMENT OF INTERIOR BUREAU OF MINES (1992)
- ⓪ BORING BY DAMES & MOORE (1988)
- ⊕ BORING BY GOLDER ASSOCIATES (1996)
- CONE PENETROMETER TEST BY GOLDER ASSOCIATES (1996)
- ⊠ TEST PIT BY DAMES & MOORE (1997)
- ▲ SEDIMENT AND WATER SAMPLE BY Ecology and Environment (2002)
- SURFACE SOIL SAMPLE BY Ecology and Environment (2002)
- ⊙ SURFACE WATER SAMPLE BY Ecology and Environment (2002)
- ⊙ SURFACE WATER SAMPLE BY Dames and Moore (1997b)
- SEEP WATER SAMPLE BY Dames and Moore (1997b)
- TDF BOUNDARY
- SURFACE WATER DRAINAGE
- ▨ WETLANDS
- ROADS



**Figure 4 – Creek #1 And Creek #2 Location**