

Investigation and Cleanup Documents Available for Public Review and Comment



A PUGET SOUND INITIATIVE Site

Reaching the goal of a healthy, sustainable Puget Sound.

Ecology Wants Your Input!

The Department of Ecology is asking for your comments on plans to clean up a site on Puget Sound. The Pope & Talbot, Inc. Sawmill Site is one of several properties located on the waterfront that Ecology is studying and cleaning up under the state's Puget Sound Initiative.

The Pope & Talbot, Inc. Sawmill Site is located at the mouth of Port Gamble Bay, on the east end of NE View Drive, in Port Gamble, Kitsap County, WA.

You are invited to comment on the following documents:

- Draft Remedial Investigation (RI)
- Draft Feasibility Study (FS)

Ecology will accept comments from *February 28 to March 29, 2011*. See the box on the right for details about where to review documents and submit comments.

Come to the Open House March 9

A public meeting will be held on March 9 beginning with an open house at 4:30 pm and a presentation/Q&A at 5:30 pm. The location is the Hood Canal Vista Pavilion, located on NE View Drive in Port Gamble. We invite you to come and learn about plans to clean up Port Gamble Bay.

Site Background

The Pope & Talbot Sawmill manufactured forest products for over 142 years (1853 to 1995). During this time, the Site consisted of sawmill buildings, two woodchip loading facilities, a log transfer facility, and log rafting and storage areas. A

Comments Invited

February 28 to March 29, 2011

Submit Comments and Questions to:

Kevin MacLachlan - Site Manager
WA Department of Ecology
Toxics Cleanup Program
PO Box 47600
Olympia, WA 98504-7600
Phone: (360) 407-6798
E-mail:
Kevin.Maclachlan@ecy.wa.gov

Document Review Locations

Kitsap Regional Library – Poulsbo Branch

700 NE Lincoln Road
Poulsbo, WA 98370
Phone: (360) 779-2915

Hours: Mon – Wed 10 am - 8 pm
Thurs 1 pm - 5 pm
Fri 10 am - 6 pm
Sat – Sun 1 pm - 5 pm

WA Department of Ecology Headquarters

300 Desmond Drive SE
Lacey, WA 98503

By appointment only:
Contact Carol Dorn
Carol.Dorn@ecy.wa.gov or
(360) 407-7224

Ecology's Toxics Cleanup Website

http://www.ecy.wa.gov/programs/tcp/sites/pope/pope_hp.html

Facility Site ID #: 93937775



separate log storage area for Pope & Talbot was located at the southwest end of Port Gamble Bay (Facility Site ID #1567413).

After the mill was taken down and removed in 1997, the upper portion of the Site was leased for log sorting, wood chipping, materials handling, and marine research.

Manufacturing activities released pollutants, including petroleum hydrocarbons, carcinogenic polycyclic aromatic hydrocarbons (cPAHs), and metals. Some of these contaminants have been found in soil, groundwater and sediments surrounding the Site. In addition to the chemicals released, wood waste impacts to the marine sediments have been found. Log rafting and chip loading operations deposited wood waste on the bed of Port Gamble Bay.

Between 2002 and 2007, interim cleanup actions removed approximately 26,000 tons of soil and 31,000 cubic yards of wood debris from the Site.

Draft Remedial Investigation

The site owner prepared the Draft RI under an Agreed Order (legal agreement) with Ecology. The RI describes the contamination in upland soil, groundwater, and sediments in and surrounding the Site.

Soils remaining on the Site are below cleanup levels. Previous interim actions successfully removed contaminated soils and reduced groundwater concentrations of total petroleum hydrocarbons, mercury, and other hazardous substances to levels that are now protective of human health and the environment.

Wood waste exists in the north and south in-water portions of the Site. When wood waste breaks down, it releases sulfide and ammonia, which are harmful to animals in the mud. Other chemicals that may bioaccumulate in shellfish are present in low concentrations at the Mill Site, and include arsenic, cadmium, carcinogenic PAHs, and dioxins/furans.

Draft Feasibility Study

In the FS, Ecology evaluates potential cleanup action alternatives and recommends a preferred cleanup action. This Draft FS addresses cleanup options for both upland and in-water portions of the Site. Information from the RI about the amount and location of contaminants is used to understand potential risks and identify cleanup alternatives. Alternatives may include contaminant removal, capping and/or institutional controls to reduce exposure, and they may be used in different combinations. Long-term monitoring will be part of the remedy to ensure cleanup achieves its goals.

The in-water portion of the Site is divided into four sediment management areas (SMAs) based on the depth of water and concentration of wood waste deposits (see map on page 4). The FS separately evaluates cleanup alternatives for the upland portion of the Site and each in-water SMA.

Information from a bay-wide Cultural Resources Overview, which identifies and maps areas of historical, archaeological, and cultural resources within the project area, was considered in the evaluation of alternatives. A Preliminary Habitat Resource Analysis is also included in this FS

to summarize the importance of eelgrass and shellfish as resources and help inform cleanup in Port Gamble Bay.

The preferred alternatives are protective of human health and the environment, make up a permanent solution that can be completed in a reasonable timeframe, addresses public concerns identified to date, and are compatible with future land uses at the Site.

The preferred alternatives identified by Ecology include the following:

Upland Areas: Since interim actions from 2002 to 2007 were successful at removing contaminated soils, the preferred alternative for remaining contamination is to use institutional controls. These controls will prevent the future use of groundwater as a drinking water supply, and ensure adequate soil cover to minimize future wildlife impacts.

SMA-1: Dredging is selected as the preferred alternative for this area. This would include removing pilings and overwater structures to allow excavation, and removing approximately 8,000 cubic yards of wood waste and associated sediment deposits located in this relatively shallow embayment.

SMA-2: A combination of dredging and containment is selected as the preferred alternative for this area and would include the following:

- Remove pilings and overwater structures to allow excavation

- Excavate and dredge wood waste and associated sediment deposits located in relatively shallow areas
- Place engineered caps on non-dredged areas to confine remaining wood waste
- Conduct long-term sediment monitoring

SMA-3 and -4: The preferred alternative selected for SMAs 3 and 4 is monitored natural recovery, which uses ongoing, naturally occurring processes to reduce sediment impacts over time. This alternative would also include long-term monitoring to ensure that cleanup achieves its goals.

Why This Cleanup Matters

Protecting and restoring Puget Sound

Governor Chris Gregoire and the Washington State Legislature established the Puget Sound Initiative to protect and restore Puget Sound. Several embayments in Puget Sound have been identified as high priority cleanup areas as part of this Initiative, including Port Gamble, Dumas Bay, Padilla and Fidalgo Bays, Port Angeles, Budd Inlet, and Port Gardner Bay. This work includes cleaning up 50-60 sites within one-half mile of the Sound. One of these is the Pope & Talbot, Inc. Sawmill Site. These cleanup actions will help to reduce pollution and restore habitat and shorelines in Puget Sound.

Other sites and activities near this Site:

Port Gamble Leased Area: Just south in the bay, this Site was a separate log storage area for Pope & Talbot. The draft RI and FS for the Leased Area Site are also available for review (Facility Site #1567413).

Pope & Talbot, Inc. Sawmill Site

For more information about other cleanup sites, go to:

http://www.ecy.wa.gov/programs/tcp/sites/sites_information.html.

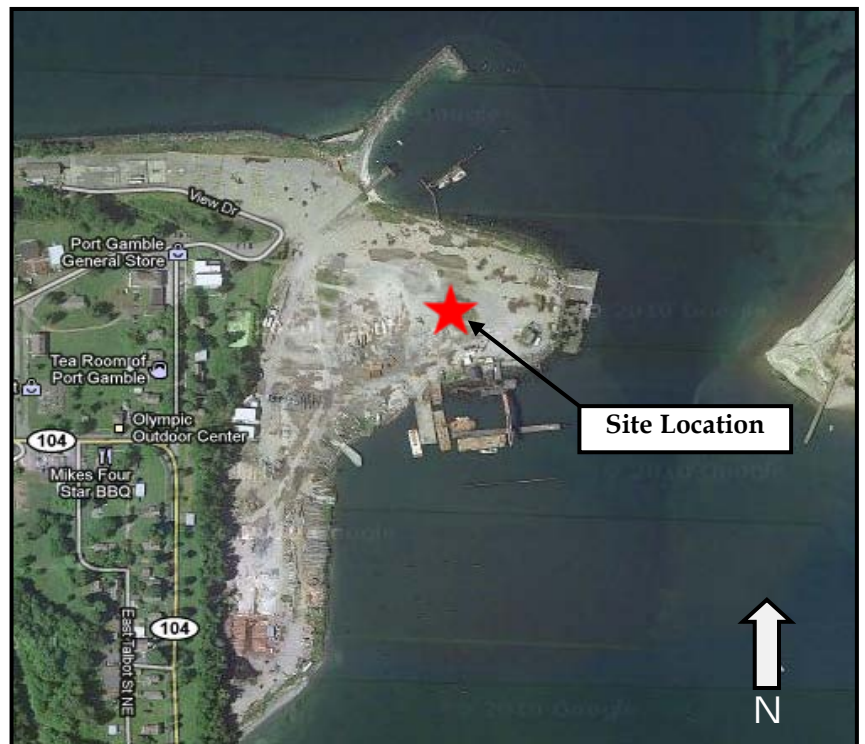
What Happens Next?

Once the public comment period ends on March 29, Ecology will review and consider all comments. Cleanup documents may be modified based on your comments. The Public Participation Plan for this Site is updated and has more information about the cleanup process and how you can get involved.

Ecology will notify you about future cleanup work and public comment periods.

For information about other Ecology public comment periods, meetings, and other events, please visit Ecology's public events calendar at: <http://apps.ecy.wa.gov/pubcalendar/calendar.asp>

The Pope & Talbot, Inc. Sawmill Site is located at the mouth of Port Gamble Bay, at the east end of NW View Drive in Port Gamble, WA.
(Map Source: Google Maps 2011)

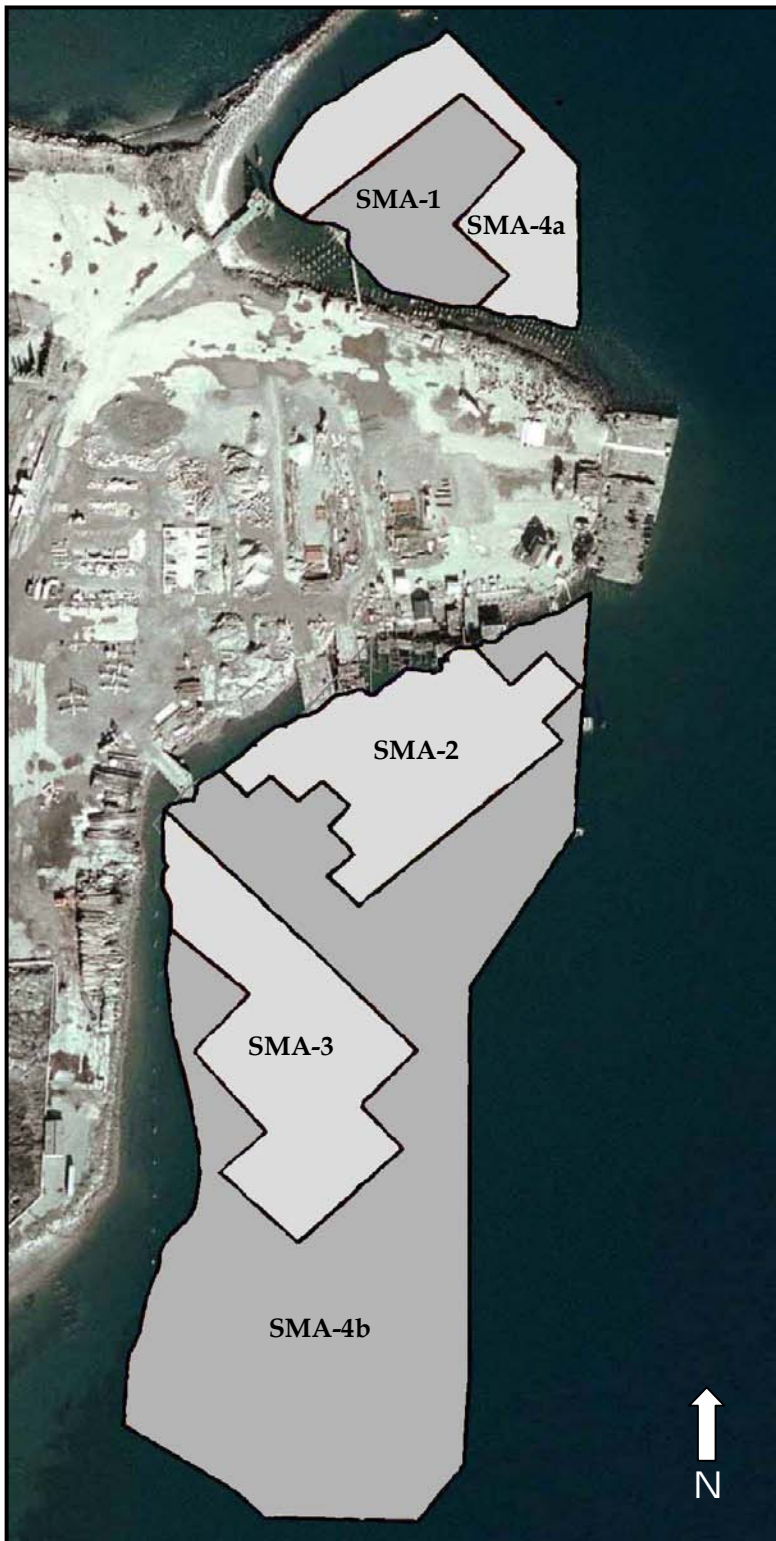


What can you do?

1. Read about the cleanup in this handout.
2. To get more detailed information, review the supporting documents at the locations listed on page one.
3. Write down your comments and questions. Send them to the Department of Ecology at the address shown on page one.
4. Come to the public meeting on March 9 starting with an open house at 4:30 and a presentation/Q&A at 5:30 at the Hood Canal Vista Pavilion.

We appreciate your comments and concerns. Thank you.





The in-water portion of the Site was divided into four Sediment Management Areas (SMAs) for cleanup.

(Modified Figure 6-9 from the RI)



Toxics Cleanup Program
PO Box 47600
Olympia, WA 98504-7600

**Pope & Talbot, Inc. Sawmill Site,
Port Gamble
Kitsap County, WA**

**Ecology Seeks Public Comment on
Draft Site Investigation Documents**

Public Comment Period:
February 28 to March 29, 2011

Open House:
March 9, 2011
Hood Canal Vista Pavilion
Open house 4:30 pm; presentation 5:30 pm

Facility Site ID #: 93937775

**Help with other languages and
formats?**

If you need this publication in an alternate format, please call the Toxics Cleanup Program at (360) 407-7170. Persons with hearing loss can call 711 for Washington Relay Service. Persons with a speech disability can call (877) 833-6341.