

Agreed Order for Cleanup Available for Public Comment

Department of Ecology is entering into an Agreed Order (legal agreement) with the Port of Tacoma (port) for cleanup at its Parcel 88 site. The Parcel 88 site is located at 1621 Marine View Drive (map on page 3). It was formerly known as the Marine View Sand and Gravel mine. The port purchased the parcel in 2006 and has already done some cleanup and redevelopment of the property. The port will complete the rest of the cleanup under Ecology's oversight.

You are invited to comment on the Agreed Order from **March 30 to April 29, 2011**. The box at the right has information on where to find the documents and how to submit your comments.

Site Background

From the 1950's to 2006, the Parcel was a gravel and sand mine and solid waste recycling facility. Former owners brought in soil, concrete, asphalt, and metal waste as fill. A 2005 investigation found that soil and groundwater was contaminated with petroleum



Parcel 88 habitat restoration project (photo courtesy of the Port of Tacoma)
For more information, visit: <http://www.portoftacoma.com/hylebos-creek>

Comments Accepted

March 30 to April 29, 2011

Submit Comments and Technical Questions to:

James DeMay, Site Manager
Toxics Cleanup Program, SWRO
P.O. Box 47775
Olympia, WA 98504-7775
Phone: (360) 407-6316
E-mail: James.Demay@ecy.wa.gov

Public Involvement Questions:

Hannah Aoyagi
Phone: (360) 407-6790
E-mail: Hannah.Aoyagi@ecy.wa.gov

DOCUMENT REVIEW LOCATIONS

Tacoma Public Library

1102 Tacoma Avenue
Tacoma, WA 98402
Phone: (253) 591-5666

Citizens for a Healthy Bay

917 Pacific Avenue, Suite 100
Tacoma, WA 98402
Phone: (253) 383-2429

WA Department of Ecology Southwest Regional Office

300 Desmond Drive SE
Lacey, WA 98503

By appointment only:

Contact Debbie Nelson,
Debbie.Nelson@ecy.wa.gov or
(360) 407-6365

Ecology's Toxics Cleanup website

<http://www.ecy.wa.gov/programs/tcp/sites/Parcel88/Parcel88-hp.html>

Facility Site ID #: 34114562

and metals. When the port bought the property in 2006, the seller agreed to do some cleanup, including:

- Removing piles of wood, glass, concrete and asphalt debris.
- Treating petroleum-contaminated surface soils.

A 2009 study confirmed that far more contamination remained. In 2010, the port began habitat restoration and more cleanup. It removed 254,000 tons of contaminated soil, debris, and an old underground storage tank. The port is now working under Ecology oversight to finish cleanup.

The Cleanup Process

The Agreed Order requires the port to complete the following steps:

- **Remedial Investigation**—Describes the nature and extent of remaining contamination (what chemicals, how deep, and how far across).
- **Feasibility Study**—Compares possible cleanup options.
- **Draft Cleanup Action Plan**—Describes additional cleanup actions for the site.

State law mandates these steps to ensure that the cleanup protects human health and the environment.

Other Port of Tacoma Cleanup Projects

The Port of Tacoma is cleaning up several sites between the Blair and Hylebos Waterways. They include the former Arkema chemical plant and its disposal area, a former log yard, USG Thermafiber rock wool plant, and the old Kaiser Aluminum facility. Major contaminants include metals, volatile chemicals, and petroleum.

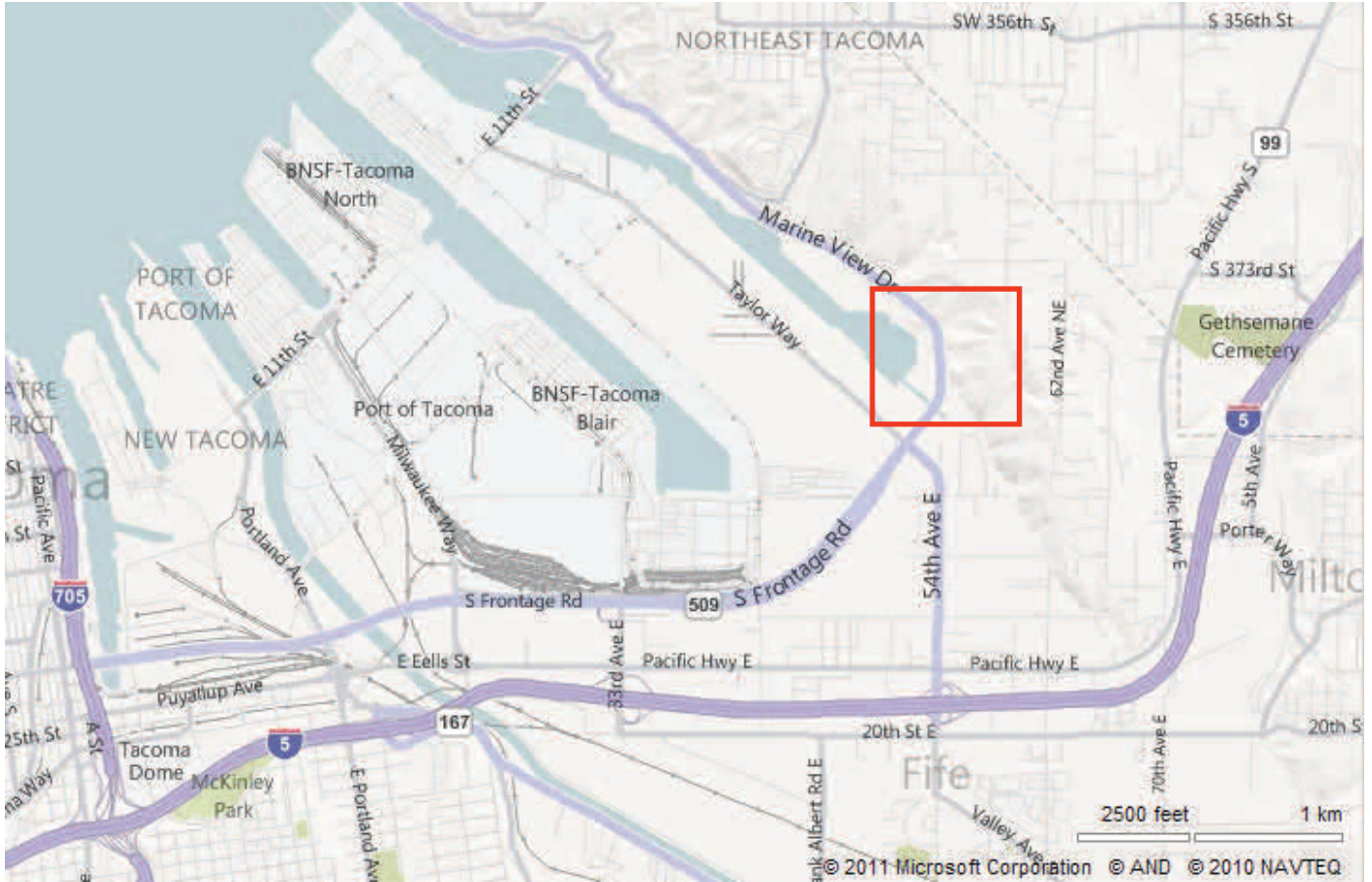
Ecology and the port are working on cleanup agreements for several of these sites. Each agreement will be available for public comment. Please contact Hannah Aoyagi (see box on page 1) for more information about these projects.

What Happens Next

Ecology will consider your comments in finalizing the Agreed Order. Once Ecology signs the agreement, work can begin. The first task is to give Ecology a report on the cleanup that was already done. Next, the port will put together the Remedial Investigation and Feasibility Study. The public will have a chance to review and comment on these documents and a draft cleanup plan.



Port of Tacoma Parcel 88




Port of Tacoma Parcel 88 site, 1621 Marine View Drive, Tacoma WA



DEPARTMENT OF
ECOLOGY
State of Washington

PO Box 47775

Olympia, WA 98504-7775

 Please recycle.

Port of Tacoma Parcel 88 Pierce County, WA

Ecology Seeks Public Comment on Agreed Order for Cleanup

Public Comment Period:

March 30–April 29, 2011

Facility Site ID #: 34114562

If you need this publication in an alternative format, call reception at (360) 407-6300. Persons with hearing loss, call 711 for Washington Relay Service. Persons with speech disability call 877-833-6341.

Why Cleanup Matters

The Parcel 88 site, formerly a sand and gravel mine, was contaminated with metals and petroleum. This posed a threat to human health and the environment, especially Hylebos Creek, which flows along the property's southern boundary. The Port of Tacoma now plans to finish cleanup and habitat restoration. This project is part of a larger effort to restore parts of the Commencement Bay shoreline and improve wildlife habitat.

To be removed from the mailing list:

Contact Hannah Aoyagi, Public Involvement Coordinator at Hannah.Aoyagi@ecy.wa.gov or 360-407-6790.
