

## Sediment Sampling Planned in Budd Inlet



**A PUGET SOUND INITIATIVE site**

**Reaching the goal of a healthy, sustainable Puget Sound now and forever!**

Ecology is funding sediment sampling in public access areas at Priest Point Park in Budd Inlet this fall. Thurston County Public Health and Social Services (County Health) will lead the investigation.

This work will follow up on some of the State Department of Health (DOH) recommendations based on Ecology's 2007 sediment investigation. DOH reported that there was no apparent health hazard for people exposed to Budd Inlet sediments. However, DOH recommended collecting additional samples at Priest Point Park beach areas. The goal of this study is to determine if sediments at Priest Point Park public access areas pose a potential dioxin-related health risk.

### Sampling and Analysis Plan

County Health drafted a sampling plan to respond to the State Health recommendations and public requests for a closer look at public access areas. Ecology and the State Department of Health reviewed the plan and it was approved by Ecology. For more specific information about sampling, see page 2.

The Sampling and Analysis Plan is available online but Ecology is not accepting comments on the document. **This is not a public comment period.** Please see the box to the right for information on who to contact if you have questions about this project.

### What Happens Next?

- County Health will collect samples in early October.
- Ecology will send out a fact sheet with a summary of the results late in 2010.
- An investigation report will be available for public review in winter 2010 or early in 2011.
- State Health will analyze the data to determine if there is a potential health risk from contact with sediments and send out a report in 2011.
- Ecology hopes to follow up on other recommendations from the 2007 study, like determining the northernmost extent of contamination, when funding becomes available.

### For More Information

#### Ecology Project Manager:

**Rebecca S. Lawson, P.E., LHG**  
WA Department of Ecology  
SWRO Toxics Cleanup Program  
P.O. Box 47775

Olympia, WA 98504-7775

Phone: (360) 407-6241

E-mail: [Rebecca.Lawson@ecy.wa.gov](mailto:Rebecca.Lawson@ecy.wa.gov)

#### Public Involvement Contact:

##### Meg Bommarito

Phone: (360) 407-6255

E-mail: [Meg.Bommarito@ecy.wa.gov](mailto:Meg.Bommarito@ecy.wa.gov)

#### Health Concerns:

##### Lenford O'Garro

WA Department of Health  
243 Israel Road SE  
Tumwater, WA 98501

Phone: 360-236-3376

Email: [Lenford.O'Garro@doh.wa.gov](mailto:Lenford.O'Garro@doh.wa.gov)

##### Gerald Tousley

Thurston County Public Health and Social  
Services Department  
412 Lily road NE

Olympia, WA 98506

Phone: 360-867-2589

Email: [tousleg@co.thurston.wa.us](mailto:tousleg@co.thurston.wa.us)

#### Document Review Locations

Olympia Timberland Library  
313 8th Avenue SE  
Olympia, WA 98501  
Phone: (360) 352-0595

WA Department of Ecology  
Southwest Regional Office  
300 Desmond Drive SE  
Lacey, WA 98503

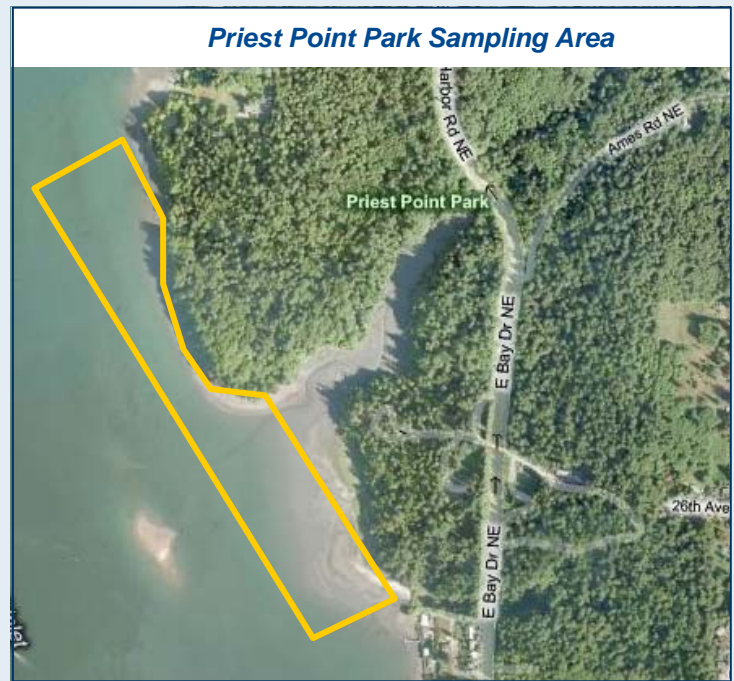
By appointment only, contact Debbie  
Nelson, [Debbie.Nelson@ecy.wa.gov](mailto:Debbie.Nelson@ecy.wa.gov) or  
(360) 407-6365

#### Ecology's Web Site

[http://www.ecy.wa.gov/  
programs/tcp/sites/budd\\_inlet/  
budd\\_inlet\\_hp.htm](http://www.ecy.wa.gov/programs/tcp/sites/budd_inlet/budd_inlet_hp.htm)

### Why Are We Sampling Sediments at Priest Point Park Beaches?

- State Health recommended that sediment samples be collected from public access areas to determine if there were potential dioxin-related health hazards for people coming into contact with the sediments.
- Ecology also received several requests from the community to test sediments for dioxins along the beach area of Priest Point Park.
- County Health will collect at least 30 surface samples from along the shoreline area of Priest Point park.
- Ecology will use this sampling opportunity to follow up on one of the data gaps identified during the 2007 sediment investigation. Ecology hopes to follow up on the other data gaps when resources become available.



### Why is this Work Important?

Decades of industrial, municipal, and naturally occurring pollution have damaged the quality, condition, and ecology of Puget Sound. In 2005, Governor Chris Gregoire and the Washington State Legislature launched the Puget Sound Initiative to begin work restoring the health of the Sound by 2020.

**One of the objectives of the Initiative is to protect and restore Puget Sound by cleaning up contaminated sites within one-half mile of the Sound.** These cleanup actions will help to reduce pollution and restore habitat and shorelines in Puget Sound. Several areas in the south Sound have been identified as high priority cleanup areas for the Toxics Cleanup Program as part of this Initiative. Early actions in these areas will contribute significantly to the restoration of Puget Sound. Investigations are planned or underway in the following areas of the Sound: Port Gamble, Dumas Bay, Padilla and Fidalgo Bay, Port Angeles, Oakland Bay, Port Gardner at Everett, and Budd Inlet.

### SEDIMENT INVESTIGATION HISTORY

#### 2007

- The Port of Olympia (Port) discovers elevated levels of dioxin in sediments at one of their shipping berths.
- Ecology begins the investigation of Budd Inlet sediments by collecting sediments and tissue samples (clams, shrimp and fish) from throughout the inlet.

#### 2008

- Ecology releases the Sediment Investigation Report.
- Results of the sampling to date reveal that the highest levels of dioxins were limited to the Port's shipping berth and two other areas near the Hardel Mutual Plywood cleanup site and the Moxlie Creek outfall (in East Bay).
- The average level of dioxin in Budd Inlet is 19 ppt for surface sediments (top 10 centimeters of sediment).
- The range of dioxins (outside of the Port's berths) is 2.9 - 60 ppt.
- State Health releases their Health Consultation Report that summarizes their analysis of the data. The report concludes there is no apparent health hazard for people exposed to Budd Inlet sediments. Visit <http://www.doh.wa.gov/ehp/oehas/consults.htm> to view this report.
- State Health recommends more sampling be completed at public access areas in Budd Inlet, specifically near Priest Point Park.
- The Port completes a pilot study and dredge in an area adjacent to two shipping berths. Over 9,500 cubic yards of contaminated sediments are removed.

#### 2009

- County Health develops a sampling plan for additional sediment sampling near Priest Point Park in Budd Inlet.

#### 2010

- Ecology approves the sampling plan and funding for the project.
- Sampling is scheduled to begin in October.

### WHAT ELSE IS ECOLOGY'S TOXICS CLEANUP PROGRAM DOING IN BUDD INLET?

#### ► Cleaning Up Contaminated Sites

Ecology is working to clean up eight contaminated sites throughout Budd Inlet. For more information about these cleanup sites, visit

[http://www.ecy.wa.gov/programs/tcp/sites/psi/buddInlet/psi\\_buddInlet.html](http://www.ecy.wa.gov/programs/tcp/sites/psi/buddInlet/psi_buddInlet.html).

#### ► Supporting Budd Inlet Restoration Efforts

Beyond its work to clean up contamination in Budd Inlet, Ecology's Toxics Cleanup Program (TCP) is also supporting a larger restoration effort in Budd Inlet. The program is funding a local interagency effort to coordinate restoration efforts between a number of local entities.

The Cities of Olympia and Tumwater, Thurston County, the Port of Olympia, the LOTT Alliance, and Washington State University signed an agreement that establishes a framework to begin looking at ways to restore areas of Budd Inlet. This effort began in 2008 and Ecology recently pledged additional funds to the project, bringing total Ecology funding to nearly \$150,000. For more information about this project, visit <http://thurston.wsu.edu/budd.htm>.

#### What Happens Next with the Port of Olympia Dredge?

- The Port has submitted their post dredge reports. They can be found on the website listed on page one of this fact sheet.
- The 6-inch sand cover layer applied after the dredge left a layer of sediment with less than 1 ppt of dioxin.
- Post-dredge sampling indicated:
  - Some sediments have moved from under the pier into the berth area (sloughing) about 5-10 feet.
  - The rate of sloughing is decreasing.
  - The levels of dioxins in surface sediments have decreased throughout the berth area, most likely due to the Capital Lake flushing.
- Ecology is working with the Port of Olympia to determine if more dredging is needed. Additional sampling will be done in December 2010.





DEPARTMENT OF  
**ECOLOGY**

State of Washington

PO Box 47775

Olympia, WA 98504-7775

---

## **Budd Inlet Sediment Investigation**

**Olympia, WA**

### **Sediment Sampling Planned**



**Facility Site ID #3097108**

To ask about the availability of this document in a version for the visually impaired call the Toxics Cleanup Program reception desk at 360-407-6300. Persons with hearing loss, call 711 for Washington Relay Service. Persons with a speech disability, call 877-833-6341.

### **WHAT IS IN THIS UPDATE?**

Information about upcoming sediment sampling in Budd Inlet.

History of the Budd Inlet Sediment Investigation.

Update on the Port of Olympia dredge project.

More information on Toxics Cleanup work throughout Budd Inlet.

