



Environmental report out for review

The Port of Bellingham, with Department of Ecology oversight, has investigated contamination, evaluated cleanup options, and identified a preferred option for the I & J Waterway site on the Bellingham waterfront. Ecology is making this information available for public review in a draft environmental report.

Contamination on the waterfront

Extensive sampling across the I & J Waterway site has found nickel, phthalates, phenols, and polycyclic aromatic hydrocarbon (PAH) compounds in marine sediment. These contaminants are associated with shoreline industrial activities of former owners and tenants including: lumber mill operations, rock crushing, and food/seafood processing. A historic building fire may also have contributed to the contamination.

Dioxins/furans and mercury were also found at the site. Dioxins/furans are present throughout Bellingham Bay from multiple sources including former pulp and paper mills and wood treating operations; and on-going burning activities. Mercury is associated with past discharges from the Georgia-Pacific Pulp Mill, formerly located to the south of the I & J Waterway.

These contaminants are present at potentially harmful levels and must be addressed under Washington's cleanup law, the Model Toxics Control Act.

Public Comment Period

October 30 – November 28, 2014

Send comments/questions to:

Lucy McInerney – Site Manager
WA Department of Ecology
3190 160th Avenue S.E.
Bellevue, WA 98008-5452
Phone: 425-649-7272
Email: lucy.mcinerney@ecy.wa.gov

Review documents at:

Bellingham – Ecology Office
1440 10th St., Suite 102
Bellingham, WA
By appointment. Call Linsay Albin at
360-715-5200.

Bellingham Public Library
210 Central Ave.
Bellingham, WA
Phone: 360-778-7323

Bellevue – Ecology Office
3190 160th Ave. SE
Bellevue, WA
By appointment; call: 425-649-7190

Ecology's I & J Waterway web page:
www.ecy.wa.gov/programs/tcp/sites
Search Site Name: I & J Waterway

Environmental investigation

In addition to conducting chemical and biological tests on sediment at the I & J Waterway site, the environmental investigation compiled and evaluated other information including:

- **Physical conditions** such as water depths and movement, natural, historic and cultural resources, and land and navigation uses;
- **Exposure pathways**, or how people, plants and animals could be exposed to contaminants—and the levels of cleanup needed to prevent exposure; and
- **Site boundaries**, or where contaminants exist at levels requiring cleanup.

Cleanup alternatives

After investigating the site, a feasibility study evaluated a range of potential ways to address the contamination, and identified dredging, capping (covering with clean material), and the monitoring of naturally forming caps as appropriate methods. These methods were then combined into six different cleanup options. Next, the options were evaluated through a disproportionate cost analysis, which identified a preferred cleanup option.

Preferred cleanup option

The preferred cleanup option includes:

- Removing about 18,000 cubic yards of contaminated sediment with disposal at a permitted landfill, requiring bulkhead and dock replacement;
- Capping a 0.7 acre-area of contaminated sediment with clean material to cover the contamination;
- Monitoring a 1.1-acre area where clean material from the Nooksack

River is naturally capping contaminated sediment to ensure that contamination levels are decreasing;

- Site-wide monitoring following construction to ensure the cleanup action is working; and
- Use restrictions on about 2 acres to prohibit activities that could disturb the capped areas.

Cost and funding

The cleanup is expected to cost about \$12.6 million. Ecology will reimburse the Port of Bellingham up to half the cost of cleanup through the state's Remedial Action Grant program, which helps to pay for the cleanup of publicly owned sites. The Legislature funds the grant program with revenues from a tax on hazardous substances.

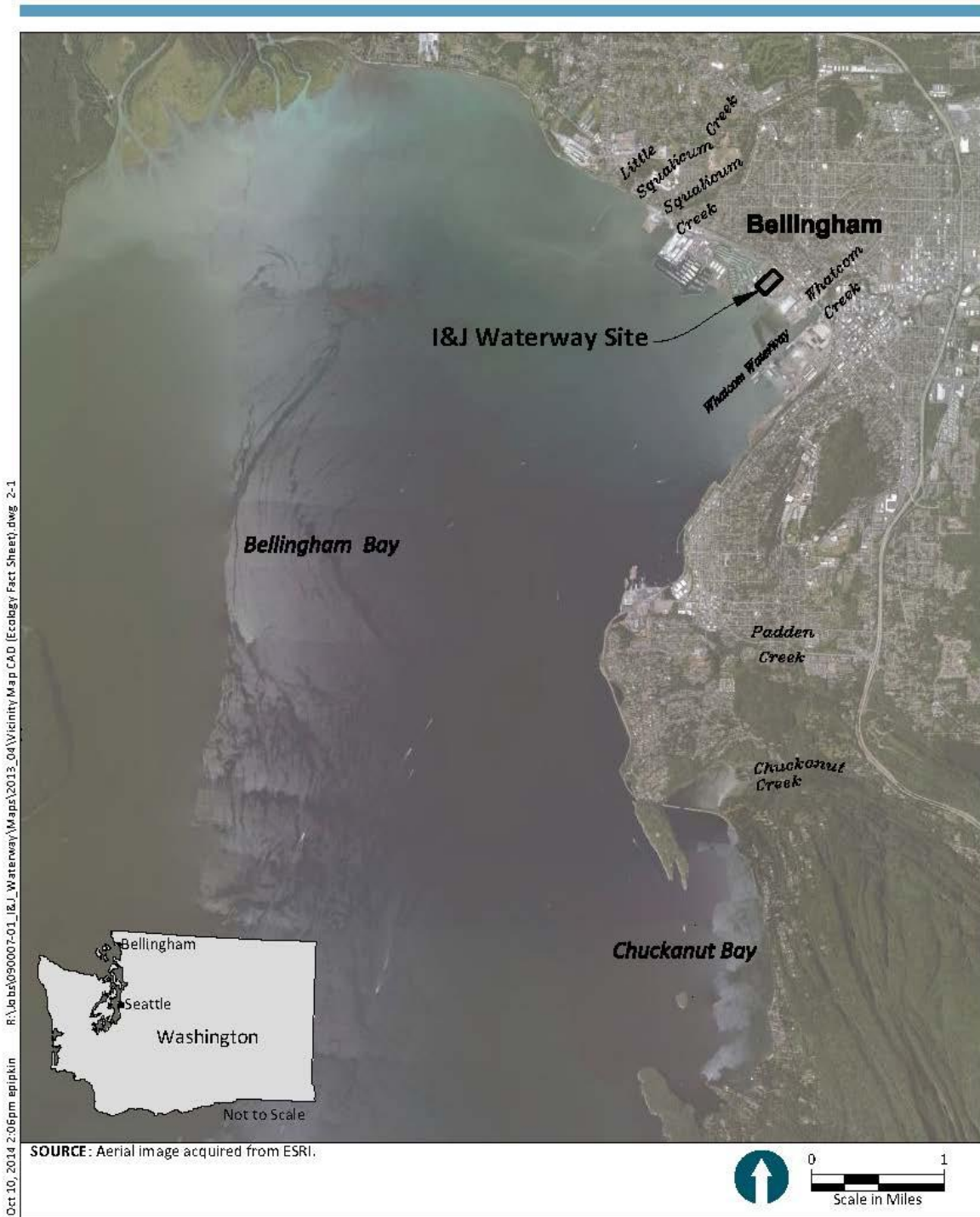
Ecology is asking for comments

You are invited to review and submit your comments on the draft environmental report from October 30 to November 28, 2014. Ecology will review and consider all comments and respond. If comments result in significant changes to the report, Ecology will issue a revised version for a second 30-day comment period. In addition, if ten or more persons request a public meeting about this cleanup, Ecology will provide notice and hold a meeting.

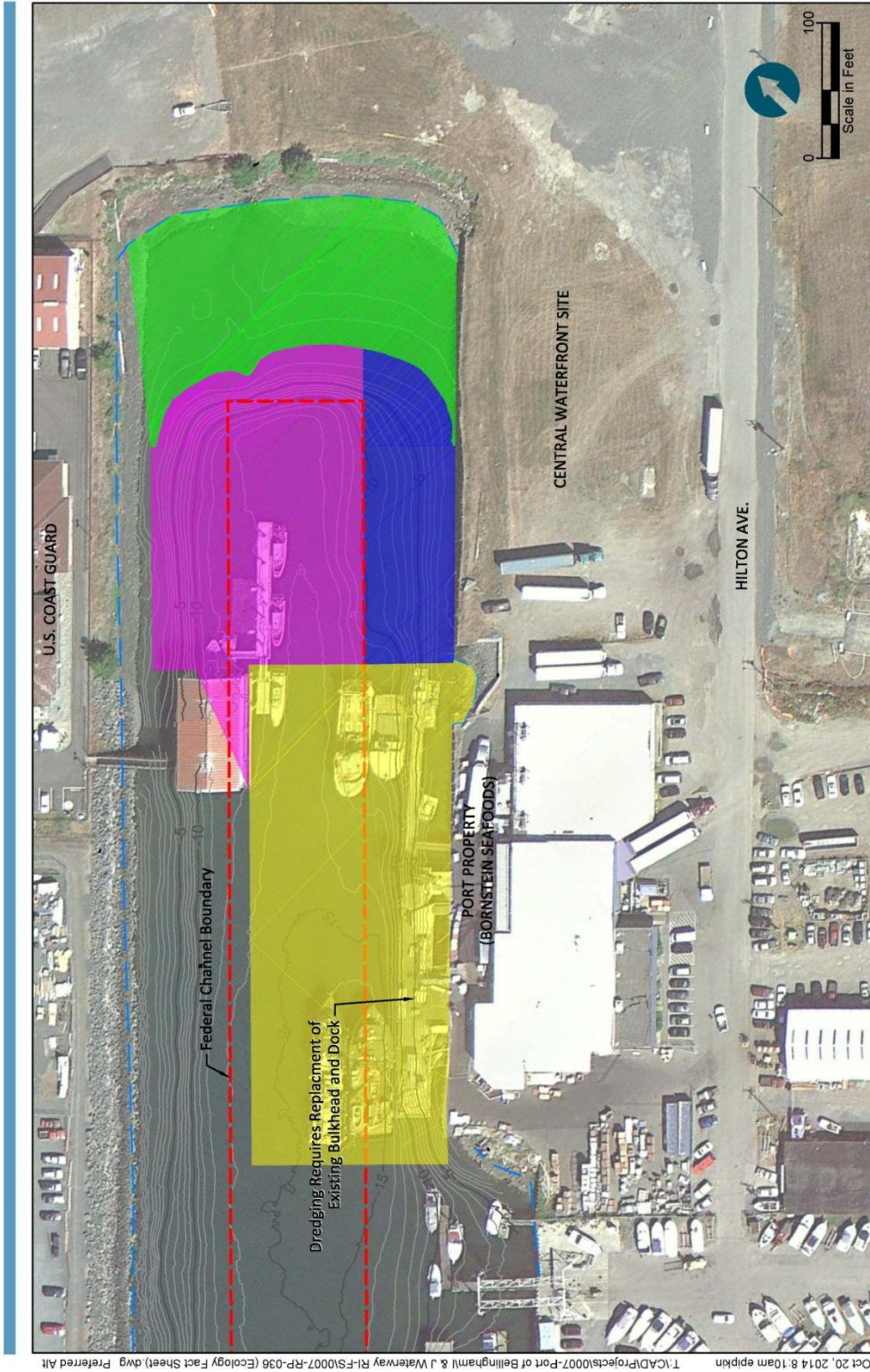
Project timeline

- October 30 – November 28: public comment period
- 2015: public review of a legal agreement called a Consent Decree which will include Ecology's Cleanup Action Plan for the site
- 2016: Construction is expected to begin

I & J Waterway



Vicinity Map
I & J Waterway Site



Oct 20, 2014 8:10am epikm T:\CAD\Projects\0007-Port of Bellingham\I & J Waterway RI-FS10007-RP-036 (Ecology Fact Sheet).dwg Preferred Alt

SOURCE: Existing bathymetry from eTrac, dated April 5, 2012. Shoreline derived from Google Maps imagery. Aerial image date is August 25, 2011. Acquired from Google Earth Pro (v.7.1.1, 1888)

HORIZONTAL DATUM: Washington State Plane North, NAD83, U.S. Feet.

VERTICAL DATUM: Mean Lower Low Water (MLLW).

LEGEND

	Dredging		Federal Channel Boundary
	Capping (3-foot minimum thickness)		Approximate Existing Shoreline
	Monitoring of Naturally Forming Cap (after placing 6-inch thick sand layer)		Existing Contours (1' and 5')
	Monitoring of Naturally Forming Cap		

Preferred Cleanup Option
I & J Waterway Site



Información en español:

Help with other formats?

To ask about obtaining this document in a version for the visually impaired, call Krista Kenner at Ecology, 360-715-5205.

Persons with hearing loss, call 711 for Washington Relay Service.

Persons with a speech disability, call 877-833-6341.

Ecología invita comentarios sobre un reportaje medioambiental para el sitio contaminado de I & J Waterway

El Departamento de Ecología del Estado de Washington (Ecología) está solicitando comentarios del público sobre un reportaje medioambiental para el sitio contaminado de I & J Waterway ubicado en el paseo marítimo de Bellingham en 701 Hilton Avenida. El reportaje contiene información sobre los sedimentos marinos contaminados y una opción preferida para limpiar la contaminación.

La contaminación es el resultado de varias fuentes antiguas incluyendo las operaciones de un aserradero, un molino de piedras y el procesamiento de alimentos y mariscos.

El reportaje está disponible para examinación pública. Usted puede encontrar el reportaje en el sitio web de Ecología: www.ecy.wa.gov/programs/tcp/sites -- busque el nombre del sitio: I & J.

Ecología aceptará comentarios desde el 30 de octubre al 28 de noviembre de 2014. Para preguntas o comentarios favor de contactar a Lucy McInerney, Departamento de Ecología, a (425) 649-7272 o correo electrónico a lucy.mcinerney@ecy.wa.gov.

Para más información en español favor de contactar a Richelle Perez a (360) 407-6084 o preguntas@ecy.wa.gov.



3190 160th Avenue SE
Bellevue, WA 98008-5452



Please reuse and recycle

I & J Waterway Cleanup Site Bellingham, WA

An environmental report that details contamination and a preferred cleanup option for the I & J Waterway site on Bellingham's waterfront is available for review and comment.

Extensive sampling across the site found contamination in the marine sediment. To prevent people, plants and animals from being exposed to contaminants, six cleanup options were evaluated, and a preferred method was identified.

Ecology will be accepting comments on the report from October 30 – November 28, 2014. See inside for more details about how to review documents and submit comments.



Scan this QR Code with your smartphone to visit Ecology's website for more information! Or:

www.ecy.wa.gov/programs/tcp

Search Site Name: I & J Waterway

