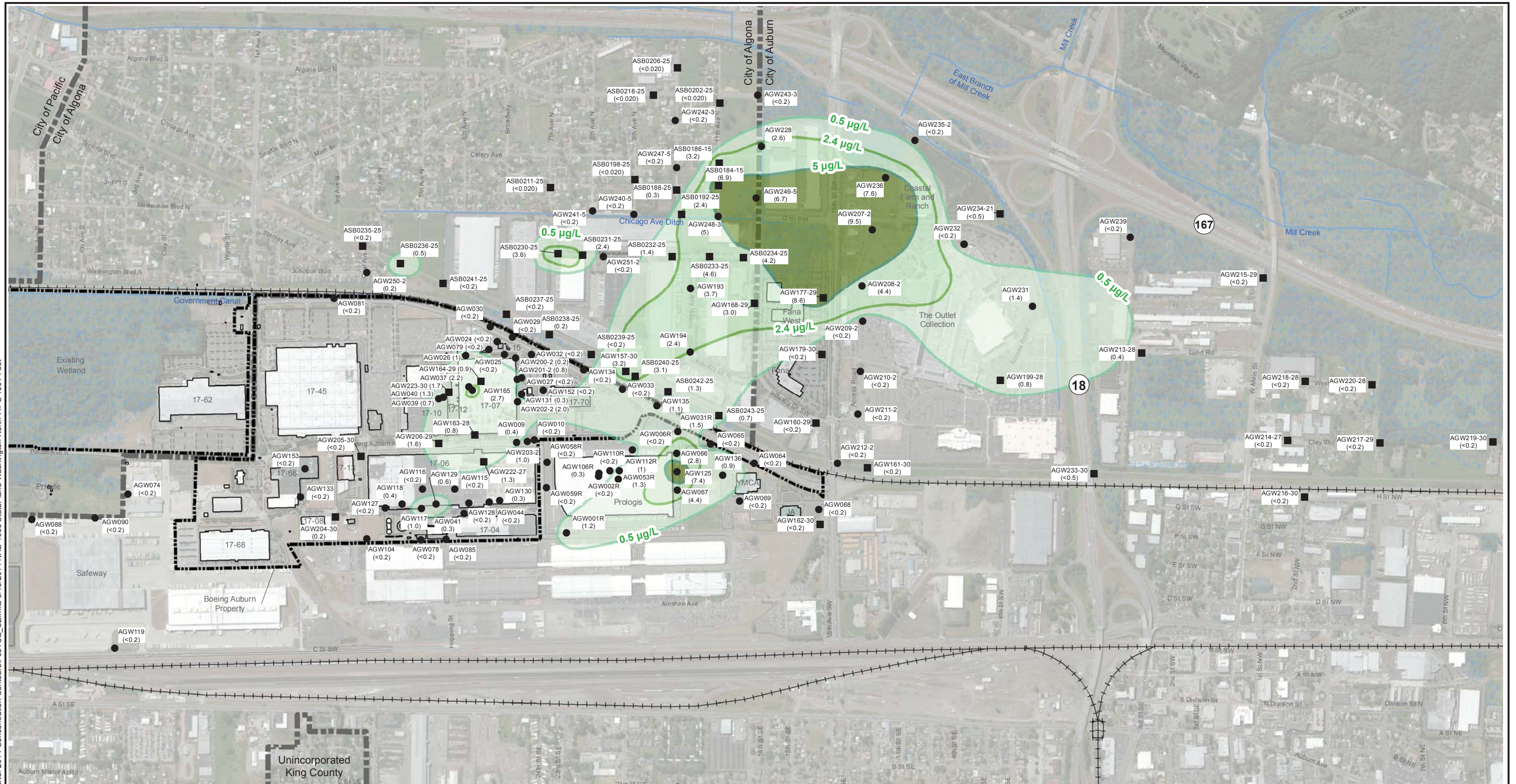


G:\Projects\025164\110\110\2nd Quarter 2014 Concentration Contours\F05TCE\_SZ.mxd 9/15/2014 NAD 1983 StatePlane Washington North FIPS 4601 Feet



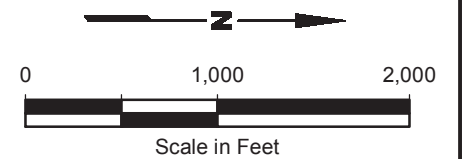
**Notes**

1. All concentrations shown in µg/L.
2. <0.2 = Compound not detected at indicated reporting limit.
3. Monitoring well results are the most recent. Direct-push boring results are from April 2013 and Summer 2014. Borehole grab samples from monitoring wells were collected at time of drilling.

4. Groundwater monitoring wells are identified by the AGW prefix. Soil borings are identified by the ASB prefix.
5. Boring sample designations include the location name (e.g., ASB0207) followed by the depth (feet, below ground surface) at which the sample was collected (e.g., 7).
6. Multilevel wells have multiple channels. Channel designations are included in the well ID (e.g., AGW208-2).
7. Black and white reproduction of this color original may reduce its effectiveness and lead to incorrect interpretation.

**Legend**

- Monitoring Well Location
- Borehole Grab Sample Location
- TCE Contour = > 5.0 µg/L
- TCE Contour = > 2.4 µg/L
- TCE Contour = ≥ 0.5 µg/L
- Waterways
- Wetland Areas
- Boeing Property
- City Limits



Base map source: Geometrix 2003; Aerial Photo Source: Esri World Imagery; Parcel Data Source: King County GIS 2013

Boeing Auburn Auburn, Washington	<b>Shallow Zone (15-30 ft) TCE Concentrations Most Recent – June 2014</b>	Figure <b>5</b>
-------------------------------------	-----------------------------------------------------------------------------------	--------------------

