

Cleanup Plans Available for Public Comment

The Washington State Department of Ecology (Ecology) invites you to comment on proposed cleanup plans for the K Ply site. This site is located at 439 Marine Drive in Port Angeles.

Ecology Wants Your Comments!

We are accepting comments from **April 2 – May 4, 2015** on these draft documents:

- **Agreed Order**—a legal agreement that requires the Port of Port Angeles (port) to implement the cleanup action plan.
- **Remedial Investigation/Feasible Study (RI/FS)**—describes the contamination and evaluates cleanup options.
- **Draft Cleanup Action Plan (CAP)**—describes how the port will clean up the contamination and how the cleanup will meet state standards.
- **Public Participation Plan**—describes the tools Ecology will use to inform the public and gather feedback.
- **State Environmental Policy Act (SEPA) review**—describes the potential environmental impact of the cleanup work.

The box to the right shows where you can review documents and how to submit comments. You can learn more at our **April 8** public meeting (see back cover).

Proposed Cleanup

Ecology has evaluated cleanup options and developed a draft cleanup plan. This plan proposes cleaning up the site by:

- Removing 16,000 cubic yards of polluted soil. The port will remove and reuse the clean soil on top of the polluted soil.
- Using bioremediation to clean up polluted groundwater. The port will add nutrients and oxygen to excavated areas before adding clean soil. The nutrients and oxygen will encourage natural organisms to grow. These organisms will then use contaminants for food, which will break down the contaminants. This will result in lower contaminant levels.
- Monitoring soil and groundwater until cleanup standards are met.

Comments Accepted

April 2 – May 4, 2015

Send Comments and Questions to:

Connie Groven, Site Manager
WA Department of Ecology
Toxics Cleanup Program, SWRO
P.O. Box 47775
Olympia, WA 98504-7775
(360) 407-6254
Connie.Groven@ecy.wa.gov

Public Involvement Questions:

Audrey Kuklok
(360) 407-0067
Audrey.Kuklok@ecy.wa.gov

DOCUMENT REVIEW LOCATIONS

Port Angeles Library

2210 South Peabody Street
Port Angeles, WA 98362
Phone: (360) 417-8500

WA Department of Ecology Southwest Regional Office

300 Desmond Drive SE
Lacey, WA 98503
By appointment only:
Contact Susie Baxter,
publicdisclosureswro@ecy.wa.gov
or (360) 407-6365

Ecology's Toxics Cleanup Website

<https://fortress.wa.gov/ecy/gsp/Sitepage.aspx?csid=28>

Facility Site ID #: 1002

Contamination

Past operations polluted soil and groundwater. The remedial investigation found that the site is contaminated with:

- Diesel-, oil-, and gasoline-range petroleum hydrocarbons.
- Benzene, ethylbenzene, toluene, and xylenes. These are found in petroleum products and some manufacturing processes.
- Pentachlorophenol (PCP), a chemical used in some wood treating processes.

Background

From 1941 to 2011, a plywood mill ran on the K Ply property. The Port of Port Angeles (port) owns the property.

In 2012, Ecology entered into an agreed order with the port to separate K Ply from the Marine Trades Area site. Investigations from 2005 to 2011 show that there are separate sources of contamination on the two sites.

The 2012 agreed order required the port to do a partial cleanup and develop a RI/FS and draft CAP for the K Ply site.

The proposed 2015 agreed order will require the port to implement the final CAP.

Earlier Cleanup

In 2013, the port completed a partial cleanup. This included:

- Removing mill buildings and structures.
- Applying erosion and stormwater controls.
- Removing contaminated soil that was an immediate threat to human health or the environment.
- Covering and stabilizing contaminated soil to protect groundwater.
- Monitoring groundwater and stormwater.

Why Cleanup Matters

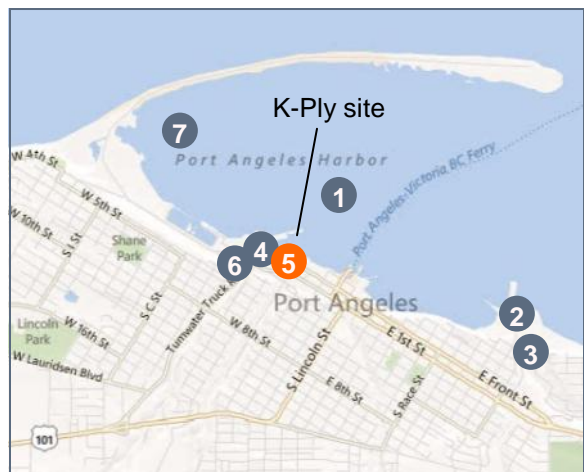
Decades of industrial, municipal, and naturally occurring pollution have damaged the quality and ecology of Puget Sound. Through the Puget Sound Initiative, Washington State has committed the resources and funding for a healthier Puget Sound and surrounding communities.

One of the Initiative’s objectives is to clean up contaminated sites within one-half mile of Puget Sound. This cleanup will help reduce pollution and restore habitat and shorelines in Puget Sound.

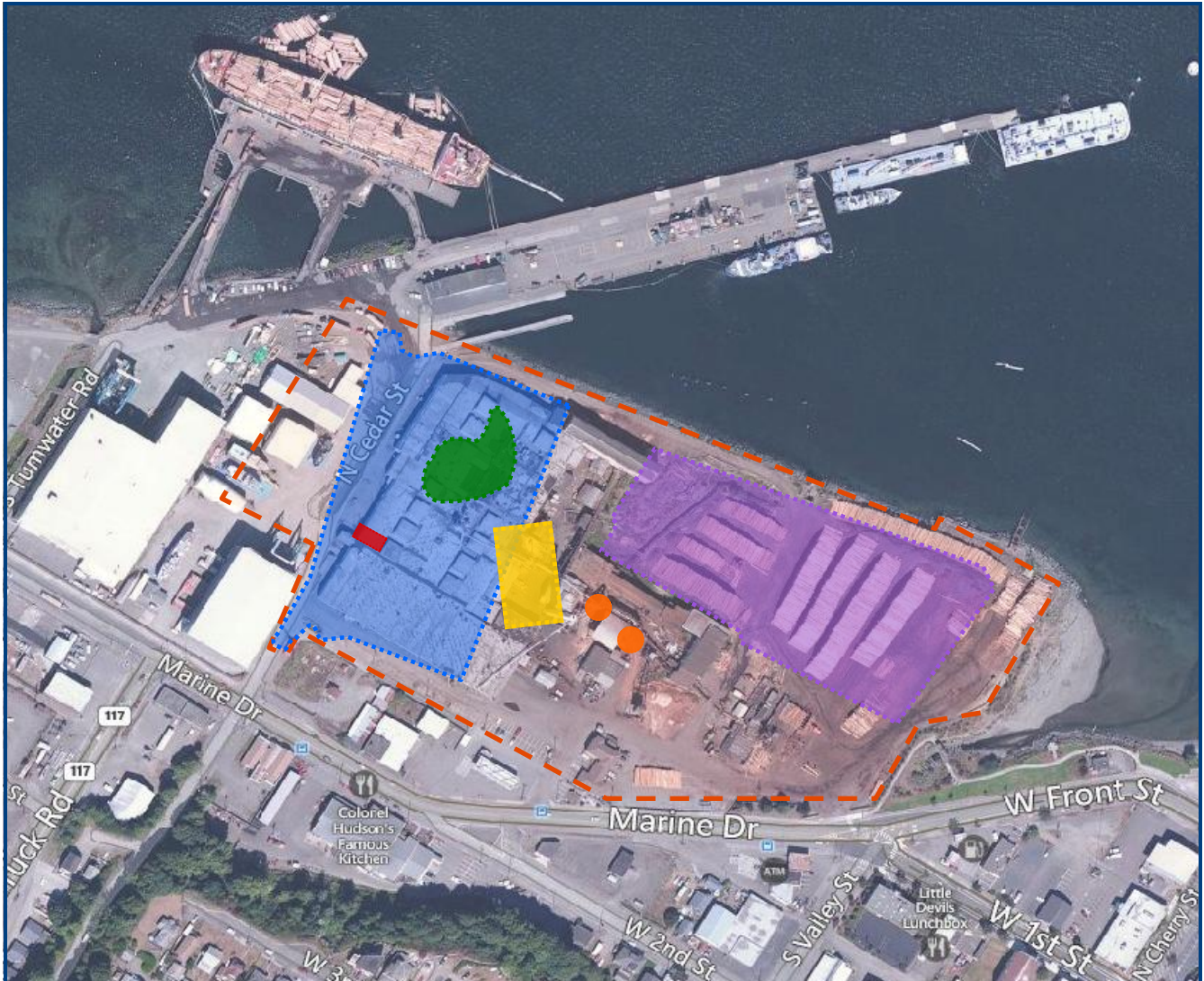
Port Angeles Harbor Cleanups

Ecology is working to investigate and clean up contamination around Port Angeles Harbor. These efforts will help reduce the overall amount of toxins in the harbor and Strait of Juan de Fuca. For more information, visit

www.ecy.wa.gov/programs/tcp/sites_brochure/psi/portAngeles/psi_portAngeles_bay.html



K Ply Cleanup Site



Legend: Cleanup Areas

Study Area	
Log Pond Fill Area	
Gasoline Area	
Hydraulic Oil Area	
Stack Area	
PCP Area	
Hog Fuel Storage Areas	

- What Happens Next**
1. At the end of the comment period, Ecology will respond to comments.
 2. We will finalize the CAP and sign the agreed order. If needed, we can make changes based on public comments.
 3. The port plans to start site cleanup in 2015.



DEPARTMENT OF
ECOLOGY
State of Washington

PO Box 47775

Olympia, WA 98504-7775

Save paper and join our e-mail list!

Please send an e-mail to Audrey.Kuklok@ecy.wa.gov with the subject line "K Ply e-mail list". In the message, let us know the mailing address you would like removed.

Please recycle.

K Ply

Clallam County, WA

Ecology seeks public comment on cleanup plans and SEPA documents

Public Comment Period:

April 2 – May 4, 2015

Facility Site ID #: 1002

If you need this publication in a format for the visually impaired, call the Toxics Cleanup Program at (360) 407-6300.

Persons with impaired hearing may call Washington Relay Service at 711. Persons with speech disability may call TTY at 877-833-6341.

Public Open House

April 8, 2015, 6:30–8:30 p.m.
Olympic Medical Center, Linkletter Hall
939 Caroline St., Port Angeles
(360) 417-7000

Ecology invites you to a public open house on the K Ply cleanup. Staff will be present to talk one-on-one during the open house sessions. Staff will give a presentation at 7:00 p.m., followed by a question and answer session.

6:30–7:00 p.m.	Open house session
7:00–8:00 p.m.	Presentation
	Question & answer
8:00–8:30 p.m.	Open house session

Light refreshments will be served.