

Slip 4 Source Control Status Report Completed and Upland Site Soil Removal Planned

Slip 4 Interim Source Control Report

Source control includes efforts by the Washington State Department of Ecology (Ecology) and the U. S. Environmental Protection Agency (EPA) to control and reduce pollution entering the Lower Duwamish Waterway (LDW). Ecology and EPA partner with a number of public agencies and public and private entities on source control work.

Ecology recently completed an Interim Source Control Status Report for the adjacent Slip 4 area (see map on page 3). Enough source control work has been completed to allow for the EPA to move forward with sediment cleanup at the head of Slip 4 this year. EPA will provide information about the Slip 4 cleanup as additional construction details become available. Work to control sources in this area will continue.

Removal of Contaminated Soil

As part of a legal agreement with Ecology, the Boeing Company (Boeing), King County and the City of Seattle (City) will remove contaminated soil from the North Boeing Field/Georgetown Steam Plant cleanup site this spring.

This partial cleanup action will involve removal of about 7,000-8,000 cubic yards of contaminated soil and groundwater from North Boeing Field and Georgetown Steam Plant properties. The soil and groundwater in this area are contaminated with polychlorinated biphenyls (PCBs). Depending on the PCB concentration, contaminated soil will be taken to a permitted hazardous waste landfill (Subtitle C) or to a permitted solid waste landfill (Subtitle D). The excavation area will be backfilled with clean soil.

Impacts to Surrounding Community

During the cleanup, Ecology, Boeing, King County, and the City will make every effort to reduce impacts and disruption to the surrounding community and local businesses. Ecology will work to keep the community informed of planned work, traffic routes and construction schedules.

Information will be communicated through site signage, web site updates, fact sheet mailings, neighborhood meeting presentations and postcards. **Ecology will share more information about potential impacts to the surrounding community in early summer when the plans are finalized.**

For More Information

Technical Questions

Mark Edens, Site Manager

WA Department of Ecology
Toxics Cleanup Program
3190 160th Ave SE
Bellevue, WA 98008
Phone: (425) 649-7070
E-mail: Mark.Edens@ecy.wa.gov

Public Involvement

Meg Bommarito
Phone: (425) 649-7256
E-mail: Meg.Bommarito@ecy.wa.gov

Document Review Locations

South Park Public Library

8604 Eighth Ave S at S Cloverdale St.
Seattle, WA 98108
Phone: (206) 615-1688

Department of Ecology

Northwest Regional Office
3190 160th Avenue SE
Bellevue, WA
By appointment only, call (425) 649-7190

Ecology's Toxics Cleanup Web Site

North Boeing Field / Georgetown Steam Plant Cleanup Site

<https://fortress.wa.gov/ecy/gsp/Sitepage.aspx?csid=4765>

Slip 4 Source Control Report

http://www.ecy.wa.gov/programs/tcp/sites_brochure/lower_duwamish/sites_slip_4/slip_4.html

EPA Slip 4 Early Action Area Web Site

<http://yosemite.epa.gov/r10/cleanup.nsf/ldw/slip+4+early+action+area>



What Happens Next?

1. The City, King County, and Boeing will work to plan traffic routes to limit impacts to the surrounding community.
2. Ecology will review draft work plans and approve a final design for construction this spring.
3. Before site work begins, Ecology will share information with the community about the work plans and traffic routes
4. Soil removal will begin in mid- to late summer and should be completed by October 2011.

Controlling Sources of Pollution to Slip 4

Sediment cleanup at the head of Slip 4 was originally scheduled to begin in 2007. In early 2007, Ecology determined more source control work was needed before cleanup could proceed.

Since 2007, Ecology and EPA have worked together with the City of Seattle, the Boeing Company, and King County to take actions to minimize sources of contamination into the slip. **Other actions taken to reduce pollution at Slip 4 include:**

- Closure of unauthorized connections, contaminated sediment removal, and replacement of the Georgetown Steam Plant Flume (completed in 2009).
- Clean out and repair of storm drains and structures at King County International Airport and North Boeing Field (storm drain cleaning 99% complete in 2010; repair work ongoing).
- Removal of PCB-contaminated concrete joint material (caulk) and other contaminated building materials from North Boeing Field (north site area completed in 2010; work ongoing in other site areas).

- Testing stormwater and storm drain solids at North Boeing Field to evaluate the effectiveness of source control actions (this activity is on-going)

In addition to these activities, Boeing is currently treating a portion of the stormwater that discharges to Slip 4. They are also working with EPA to design and build a larger long-term stormwater treatment facility at North Boeing Field. EPA will provide information about stormwater treatment as more design and construction details become available.

Site Locations

The North Boeing Field and Georgetown Steam Plant properties are located at 7370 East Marginal Way South and 6700 13th Avenue South, respectively on the east side of the Lower Duwamish Waterway (see map on page 3).

Site Background

Georgetown Steam Plant

In 1906, Seattle Electric Company built the Georgetown Steam Plant along the Duwamish River to provide power during periods of high electricity use. After 1912, use of the Steam Plant decreased under Puget Power ownership. The City acquired the plant in 1951 and operated the plant on stand-by until it was fully decommissioned in 1977.

North Boeing Field

King County owns most of North Boeing Field. Boeing leases about 117 acres from King County and owns the improvements it has built on the property. Boeing has operated at North Boeing Field since the 1940s for aircraft and aerospace manufacturing, maintenance, and research.



North Boeing Field and Georgetown Steam Plant

Lower Duwamish Waterway Cleanup

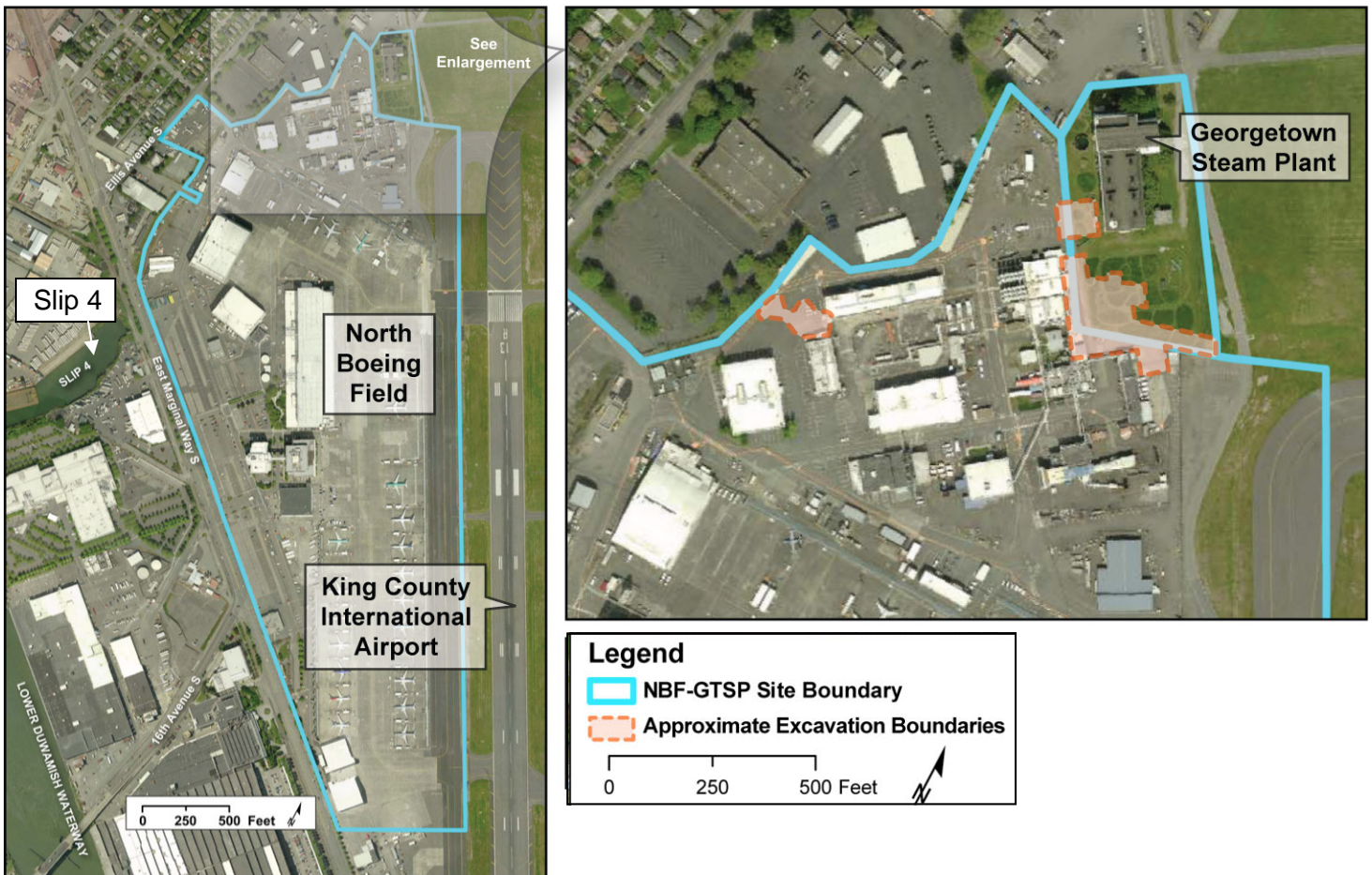
The North Boeing Field and Georgetown Steam Plant site is located within the larger Lower Duwamish Waterway (LDW) cleanup site. The LDW site is a Superfund site that consists of the 5.5 mile stretch of the Duwamish River that flows north into Elliot Bay upstream of Harbor Island. The LDW site is designated as a contaminated site under both state and federal law due to contaminants in the river and intertidal sediments.

The North Boeing Field and Georgetown Steam Plant is one of several sites near the LDW that are being addressed. Cleaning up pollution at these sites will reduce the threat to human health and the environment. This work will also help to prevent recontamination of the sediments after the LDW site cleanup is complete.

Ecology is working with the U.S. Environmental Protection Agency (EPA) and other local agencies and businesses to clean up the Lower Duwamish. For more information see Ecology's Web site:

http://www.ecy.wa.gov/programs/tcp/sites_brochure/lower_duwamish/lower_duwamish_hp.html

North Boeing Field and Georgetown Steam Plant Site Location





DEPARTMENT OF
ECOLOGY

State of Washington

3190 160th Avenue SE

Bellevue, WA 98008

North Boeing Field & Georgetown Steam Plant Seattle, WA

Source Control Status Report for Slip 4 and Plans to Remove Contaminated Soil

Facility Site ID #: 2050

If you need this publication in an alternative format call reception at 425-649-7000. Persons with hearing loss, call 711 for Washington Relay Service. Persons with a speech disability, call 877-833-6341.

What is in this Fact Sheet?

This fact sheet contains information about:

- Plans for removing contaminated soil at the North Boeing Field / Georgetown Steam Plant site.
- Source control work underway at the Slip 4 area.
- A map of where work will happen.
- Site background.
- Next steps.

