
Public Participation Plan

BNSF Track Switching Facility
(aka Wishram Railyard)

Facility/Site ID # 1625461

Cleanup Site ID # 230

Wishram, Washington



Prepared by

Washington State Department of Ecology

June 2015

Table of Contents

INTRODUCTION	1
LOCATION AND SITE BACKGROUND.....	1
Location.....	1
Site Background	1
Site Location Map.....	2
HOW THE SITE WILL BE CLEANED UP	3
Investigation and Study.....	3
Cleanup.....	3
KEY COMMUNITY CONCERNS.....	3
PUBLIC PARTICIPATION ACTIVITIES AND RESPONSIBILITIES	3
Public Involvement Activities.....	4
Formal Public Comment Period	4
Public Meetings	4
Information Repositories	4
Site Register.....	4
Mailing List	5
Fact Sheets.....	5
Newspaper Ads.....	5
Plan Update	5
Public Points of Contact.....	5
GLOSSARY	6

INTRODUCTION

The Washington State Department of Ecology (Ecology) has developed this Public Participation Plan pursuant to the state cleanup regulation called the Model Toxics Control Act (MTCA) WAC 173-340-600. The intent is to promote meaningful community involvement during the cleanup process at the BNSF Track Switching Facility (aka Wishram Railyard) site located at 100 Main Street in Wishram, Washington (site). This plan outlines and describes the tools that Ecology uses to inform the public about site activities and identifies opportunities for the community to become involved.

LOCATION AND SITE BACKGROUND

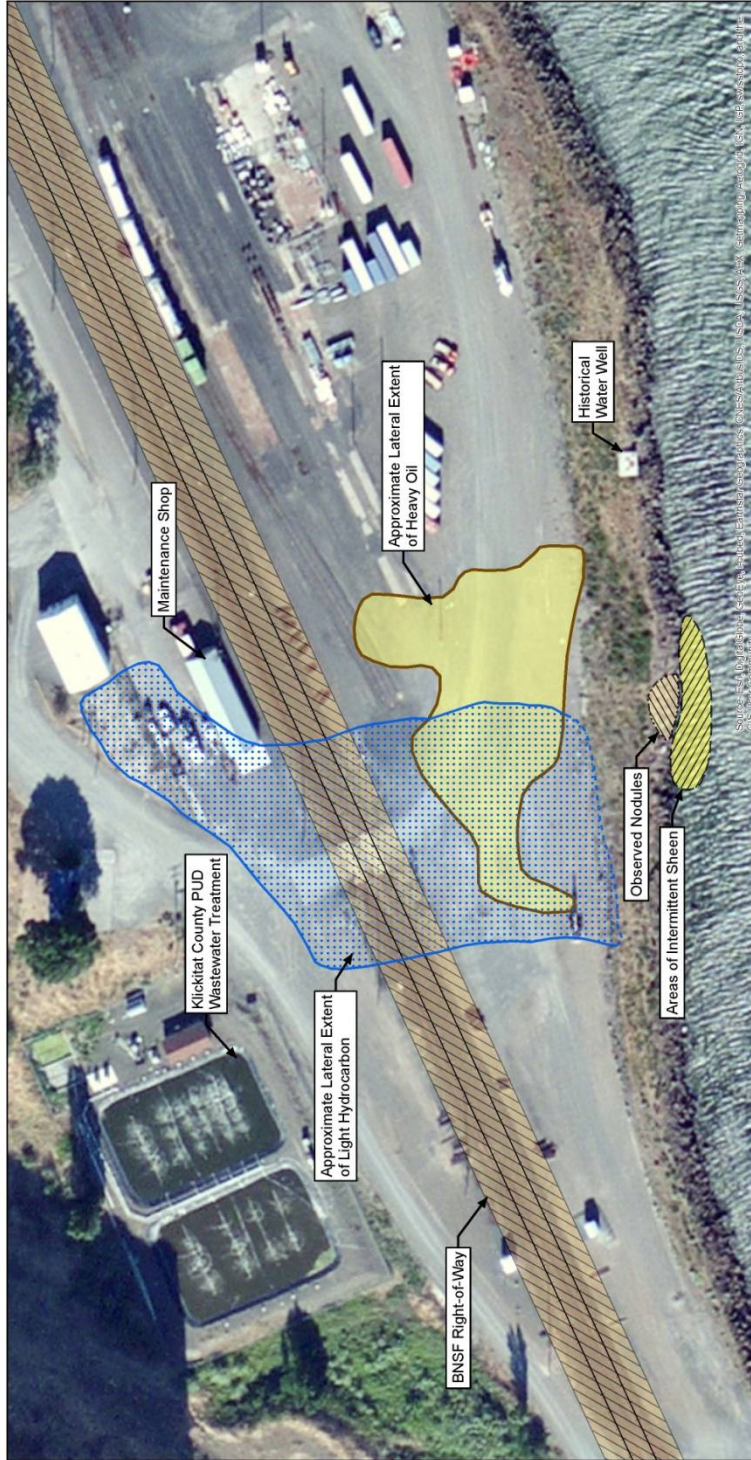
Location

The Site is located in Wishram, Washington, approximately 9 miles upstream of The Dalles Dam (see figure on page 2).

Site Background

The Site was originally developed by the Spokane, Portland and Seattle (SP&S) Railway in approximately 1912. The overall area of the railyard is about 20 acres, is approximately 2,000 feet long, ranges from 150 to 720 feet wide, and is bounded on the south by the Columbia River. The facility currently includes an Amtrak passenger service depot, railcar switching on track spurs located just south of the depot, and a track maintenance crew headquarters. BNSF has been conducting voluntary remedial activities at the site since 2002. Previous environmental investigations of the Site indicate the presence of hazardous substances in soil and groundwater above state cleanup standards including petroleum. As a result, the Site is subject to the investigation and cleanup requirements of the Model Toxics Control Act (MTCA) administered by Ecology.

Site Location Map



Legend

- Mainline Railroad Tracks
- ▨ BNSF Right-of-Way
- ▨ (Blue Dotted) Approximate Lateral Extent of Light Hydrocarbon
- ▨ (Yellow Dotted) Approximate Lateral Extent of Heavy Oil
- ▨ (Diagonal Hatched) Observed nodules
- ▨ (Cross-hatched) Area of intermittent sheen

Notes:

1. All locations are approximate.
2. Oil sheen observations were made only in July 2013 and July 2014.
3. Monthly river bank observations performed starting November 2013.
4. Distribution of heavy oil and light hydrocarbon is based on LIF survey and other results.

Kennedy/Jenks Consultants
Wishram, Washington

Site Diagram

Exhibit A

KJ Project Number 1486120.00

HOW THE SITE WILL BE CLEANED UP

Investigation and Study

Initial work at the Site will focus on completing a remedial investigation and a feasibility study (RI/FS). The remedial investigation will determine the type, level, location and sources of contamination at the site. The feasibility study will evaluate a range of remedial alternatives that address the contamination, minimizing or eliminating the human health and environmental threats. Implementation of this work will lead to the generation of a draft RI/FS report. Ecology will solicit public comment on the draft RI/FS prior to finalization.

Cleanup

After the RI/FS is finalized, a draft Cleanup Action Plan (CAP) will be completed that describes the remedial alternative preliminarily selected by Ecology. The CAP will be an exhibit to a legal agreement that compels cleanup of the site. The legal agreement and CAP will be issued for public review and comment prior to finalization. Actual cleanup will begin when the CAP is implemented. This includes design, construction, operation and monitoring of cleanup actions.

KEY COMMUNITY CONCERNS

Ecology has preliminarily identified the following concerns and interests that may apply to the investigation and cleanup of the Site:

- Protection of human health and the environment
- Opportunities for public involvement
- Compliance with regulatory requirements

Additional public concerns may be identified over the course of the Site cleanup through public comment periods; community interviews; surveys; meetings; and other contacts with individuals, community groups, or organizations.

PUBLIC PARTICIPATION ACTIVITIES AND RESPONSIBILITIES

The purpose of this public participation plan is to promote public understanding and participation in the MTCA activities planned for this site. This section of the plan addresses how Ecology and the Potentially Liable Persons will share information and receive public comments and community input on the Site activities.

Ecology encourages the public to become involved in the cleanup process. Information will be provided regularly to provide opportunities to review materials and provide comments. This plan is intended to be a flexible working document that will be updated as community concerns emerge and/or more information becomes available during the cleanup process. To arrange for a briefing with project staff, ask questions or provide comments on the plan or other aspects of the cleanup, please contact one of the persons listed below.

Public Involvement Activities

Ecology uses a variety of activities to facilitate public participation in the planning and cleanup of MTCA sites. The following is a list of the public involvement activities that Ecology will use, their purposes, and how they will be used during the cleanup of the Site.

Formal Public Comment Period

Public comment periods usually last 30 days and are the primary method Ecology uses to get feedback from the public on proposed cleanup decisions. Public comment periods are required on all agreed orders, consent decrees, and enforcement orders. Public comment periods are also required for all Ecology-conducted remedial actions.

During a comment period, the public can comment in writing. Verbal comments are taken if a public hearing is held. After formal comment periods, Ecology reviews all comments received and may respond in a document called a ***responsiveness summary***. A responsiveness summary is a summary of oral and/or written public comments received by Ecology during a comment period on key documents, and Ecology's responses to those comments.

Ecology will consider the need for changes or revisions based on input from the public. If significant changes are made, then a second comment period may be held. If no significant changes are made, then the draft document(s) will be finalized.

Public Meetings

Public meetings may be held at key points during the investigation and cleanup process. Ecology also may offer public meetings for actions expected to be of particular interest to the community. These meetings will be held at locations convenient to the community.

Information Repositories

During the comment period, the site documents will be available for review at information repositories. Ecology can also make copies of documents for a fee.

For this Site, the information repositories are:

- Goldendale Public Library, 131 W Burgen St, Goldendale, 98620, Phone: (509) 773-4487
- Department of Ecology, Central Regional Office, 1250 W Alder Street, Union Gap, 98903, Phone (509) 575-2490

Information on the Site will also be posted on the Ecology website at:
<https://fortress.wa.gov/ecy/gsp/Sitepage.aspx?csid=230>

Site Register

The Site Register is published by Ecology bi-monthly to inform the public of:

- Activities related to the study and cleanup of contaminated sites
- Public meetings/hearings and public comment periods
- Discussion or negotiations of legal agreements
- Availability of cleanup reports
- Hazard rankings of sites

If you would like to be placed on the Site Register's e-mailing list, complete the electronic form at http://www.ecy.wa.gov/programs/tcp/pub_inv/pub_inv2.html.

Mailing List

Ecology has compiled a mailing list for the Site. The list includes individuals, groups, public agencies, elected officials, private businesses, potentially affected parties, and other known interested parties. The list is maintained at Ecology's Central Regional Office and will be updated as needed.

Fact Sheets

Ecology will mail fact sheets to persons and organizations interested in the Site to inform them of public meetings and comment opportunities and important site activities. Ecology may also mail fact sheets about the progress of site activities.

Newspaper Ads

At a minimum, Ecology will place an ad in the *Goldendale Sentinel* to announce public comment periods and public meetings or hearings for the Site.

Plan Update

This public participation plan may be updated as the project proceeds. If an update is necessary, the revised plan will be submitted to the public for comment.

Public Points of Contact

If you have questions or need more information about this plan or this Site, please contact the following person:

John Mefford, Site Manager
Washington State Department of Ecology
Central Regional Office
1250 W Alder Street
Union Gap WA 98903
(509) 454-7836
Email: john.mefford@ecy.wa.gov

GLOSSARY

Cleanup: Actions taken to deal with a release, or threatened release of hazardous substances that could affect public health and/or the environment. The term "cleanup" is often used broadly to describe various response actions or phases of remedial responses such as the remedial investigation/feasibility study.

Cleanup Action Plan (CAP): A document that explains which cleanup alternative(s) will be used at sites for the cleanup. The Cleanup Action Plan is based on information and technical analysis generated during the remedial investigation/feasibility study and consideration of public comments and community concerns.

Comment Period: A time period during which the public can review and comment on various documents and Ecology or EPA actions. For example, a comment period is provided to allow community members to review and comment on proposed cleanup action alternatives and proposed plans. Also, a comment period is held to allow community members to review and comment on draft feasibility studies.

Consent Decree: A formal legal document, approved and issued by a court, which formalizes an agreement reached between the state (and EPA if involved) and the potentially liable person(s) on what will take place during the remedial investigation/feasibility study and/or cleanup action. A Consent Decree is similar to an Agreed Order except that a Consent Decree goes through the courts. Consent Decrees are subject to public comment. If a decree is substantially changed, an additional comment period is provided.

Feasibility Study (FS): This study uses information obtained in a remedial investigation to develop and evaluate a range of cleanup options for a site.

Information Repository: A file containing current information, technical reports, and reference documents available for public review. The information repository is usually located in a public building that is convenient for local residents such as a public school, city hall or library.

Model Toxics Control Act (MTCA): Legislation passed by the state of Washington in 1988. Its purpose is to identify, investigate, and clean up facilities where hazardous substances have been released. It defines the role of Ecology and encourages public involvement in the decision making process. MTCA regulations became effective March 1, 1989 and are administered by the Washington State Department of Ecology.

Potentially Liable Person (PLP): Any individual(s) or company(s) potentially responsible for, or contributing to, the contamination problems at a site. Whenever possible, Ecology requires these PLPs, through administrative and legal actions, to clean up sites.

Public Participation Plan: A plan prepared to encourage coordinated and effective public involvement designed to the public's needs at a particular site.

Remedial Investigation: This study characterizes the site and defines the type and extent of contamination.

Remedial Investigation/Feasibility Study: Two distinct but related studies. They are usually performed at the same time, and together referred to as the "RI/FS." They are intended to:

- Gather the data necessary to determine the type and extent of contamination;
- Establish criteria for cleaning up the site;
- Identify and screen cleanup alternatives for remedial action; and
- Analyze in detail the technology and costs of the alternatives.

Responsiveness Summary: A summary of oral and/or written public comments received by Ecology during a comment period on key documents, and Ecology's responses to those comments. The responsiveness summary is especially valuable during the Cleanup Action Plan phase at a site when it highlights community concerns.

Site: Any building, structure, installation, equipment, pipe or pipeline (including any pipe into a sewer or publicly owned treatment works), well, pit, pond, lagoon, impoundment, ditch, landfill, storage container, motor vehicle, rolling stock, vessel, or aircraft; or any site or area where a hazardous substance, other than a consumer product in consumer use, has been deposited stored, disposed of, or placed, or otherwise come to be located.