

REFERENCE: USGS TOPO!

NOTE: BLACK AND WHITE REPRODUCTION OF THIS COLOR ORIGINAL MAY REDUCE ITS EFFECTIVENESS AND LEAD TO INCORRECT INTERPRETATION.

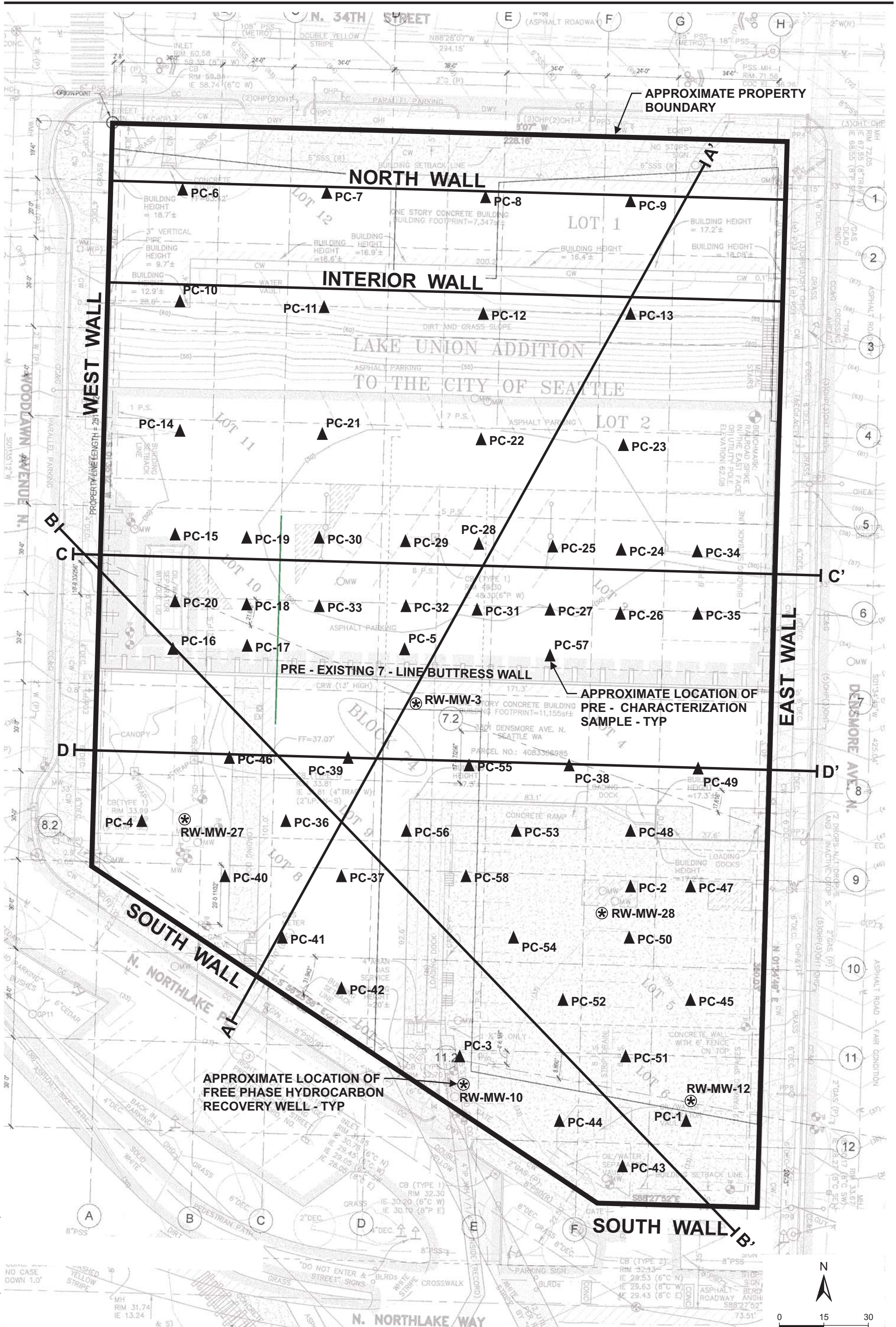


associated  
earth sciences  
incorporated

VICINITY MAP  
NORTH EDGE  
SEATTLE, WASHINGTON

FIGURE 1  
DATE 5/14  
PROJ. NO. KV030772B





REFERENCE: PERKINS & WILL

NOTE: BLACK AND WHITE REPRODUCTION OF THIS COLOR ORIGINAL MAY REDUCE ITS EFFECTIVENESS AND LEAD TO INCORRECT INTERPRETATION.

03772 North Lake Union / 03772 F2 Prop and Pre-Charac. Sample Loc 3-20-15.cdr



associated  
earth sciences  
incorporated

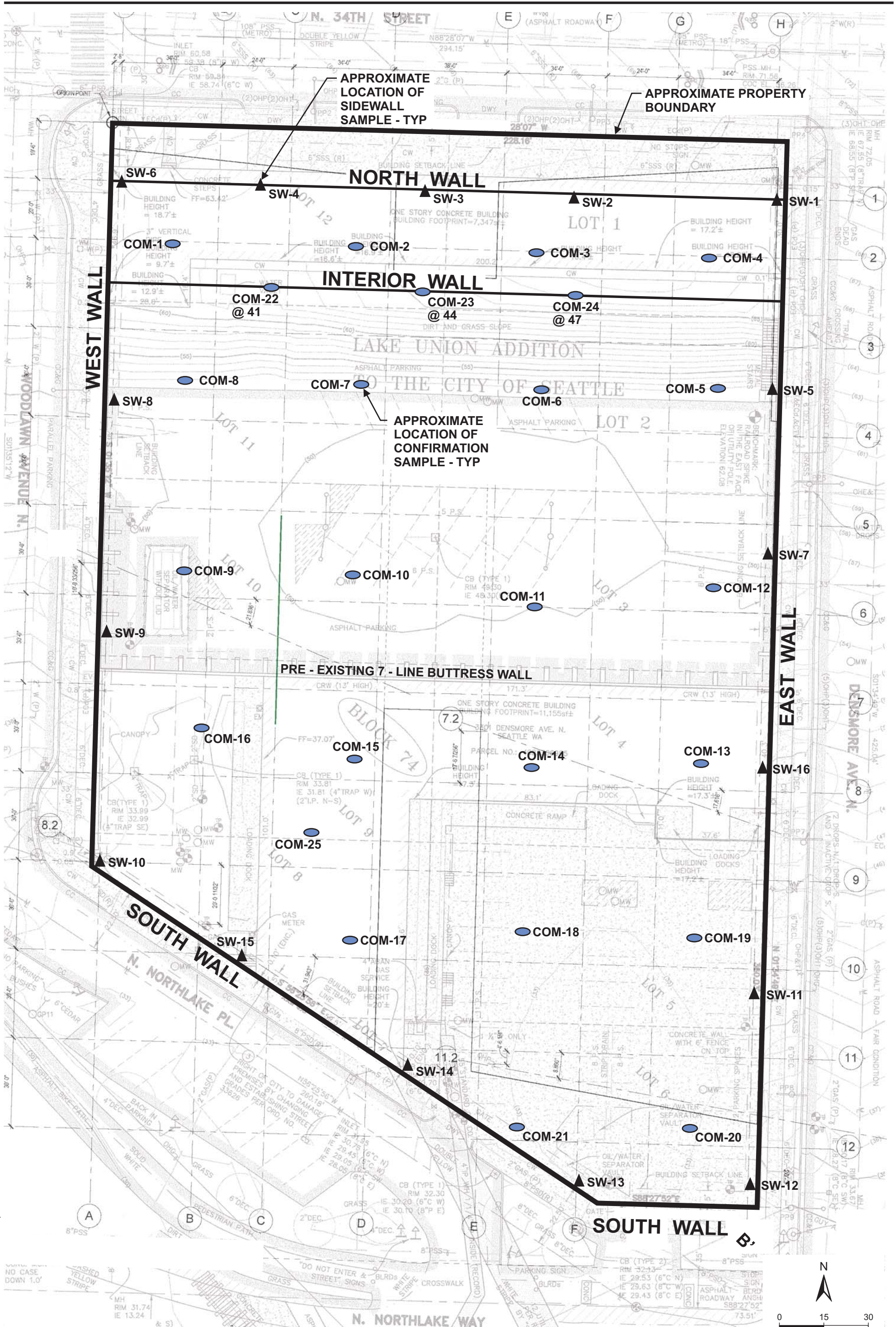
PROPERTY PLAN AND PRE-CHARACTERIZATION SAMPLE LOCATION MAP  
NORTH EDGE TECHNOLOGY CENTER  
SEATTLE, WASHINGTON

FIGURE 2

DATE 3/15

PROJ. NO. KV030772B





APPROXIMATE LOCATION OF SIDEWALL SAMPLE - TYP

APPROXIMATE PROPERTY BOUNDARY

APPROXIMATE LOCATION OF CONFIRMATION SAMPLE - TYP

PRE - EXISTING 7 - LINE BUTTRESS WALL

**NORTH WALL**

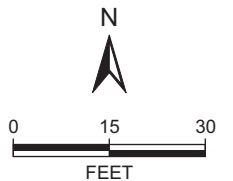
**INTERIOR WALL**

**WEST WALL**

**EAST WALL**

**SOUTH WALL**

**SOUTH WALL**



REFERENCE: PERKINS & WILL

NOTE: BLACK AND WHITE REPRODUCTION OF THIS COLOR ORIGINAL MAY REDUCE ITS EFFECTIVENESS AND LEAD TO INCORRECT INTERPRETATION.

03772 North Lake Union / 03772 F3 Sidewall and Confirm Sample Loc 3-20-15.cdr

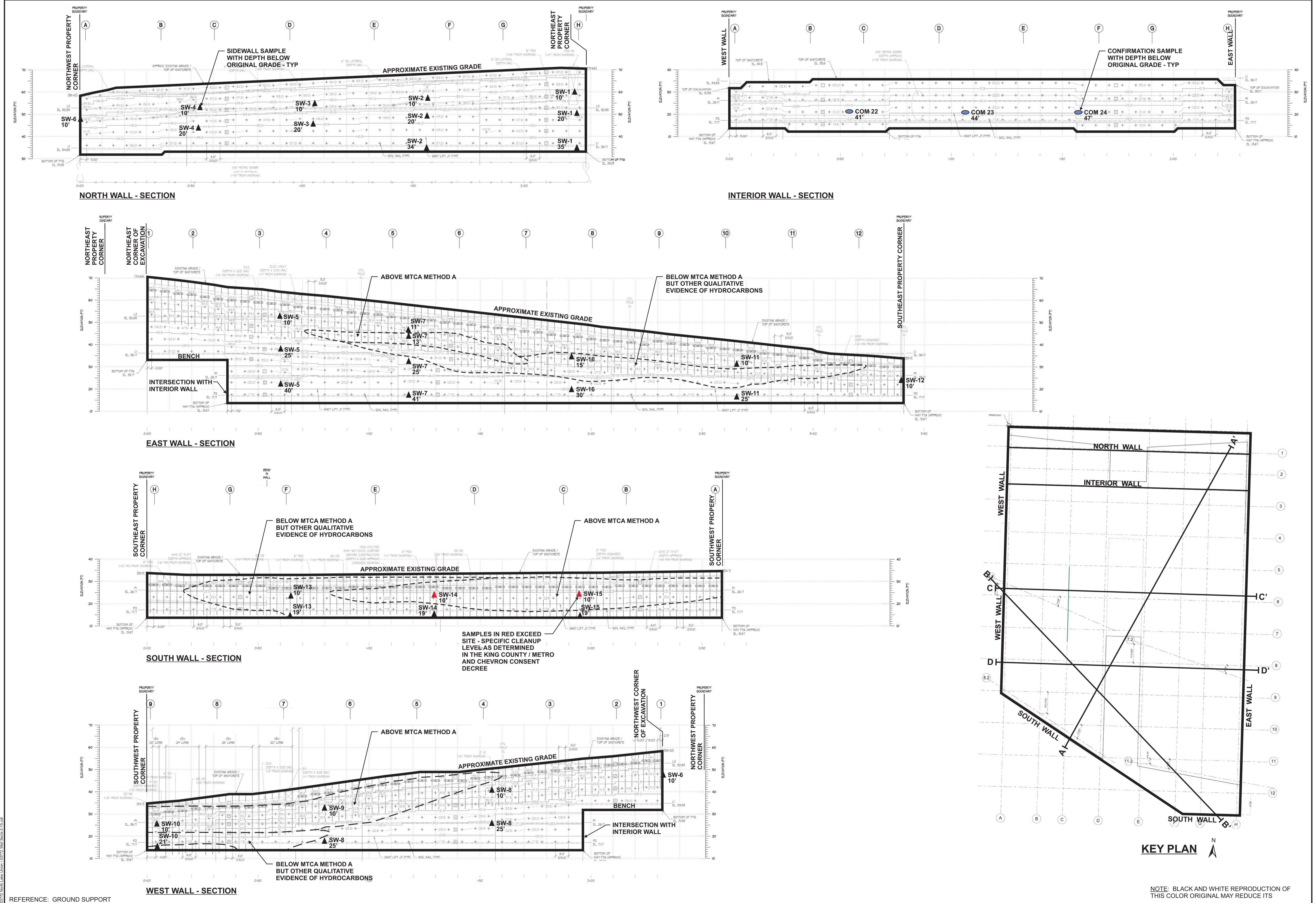


associated  
earth sciences  
incorporated

**SIDEWALL AND CONFIRMATION SAMPLE LOCATION MAP**  
NORTH EDGE TECHNOLOGY CENTER  
SEATTLE, WASHINGTON

FIGURE 3  
DATE 3/15  
PROJ. NO. KV030772B





associated earth sciences incorporated

1552 Commerce Street, Suite 102  
Tacoma, WA 98402  
(253) 722-2992  
aesgeo.com

911 Fifth Avenue  
Kirkland, WA 98033  
(425) 827-7701  
aesgeo.com

2311 1/2 Hewitt, Suite 2  
Everett, WA 98201  
(425) 259-0522  
aesgeo.com

## SOIL NAIL WALL SECTIONS

### NORTH EDGE TECHNOLOGY CENTER

### SEATTLE, WASHINGTON

DRAWN BY: EIN

CHECKED BY: FSM

DATE: 2/15

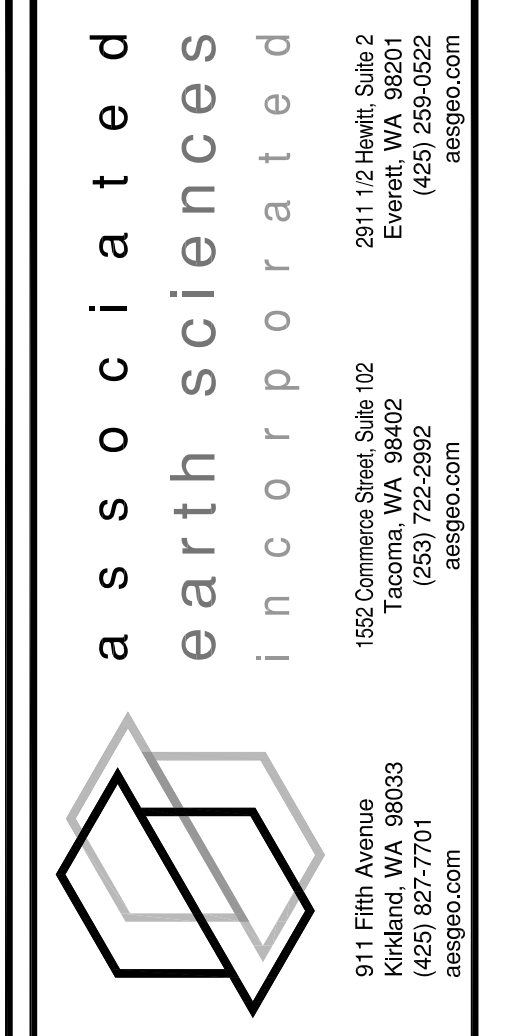
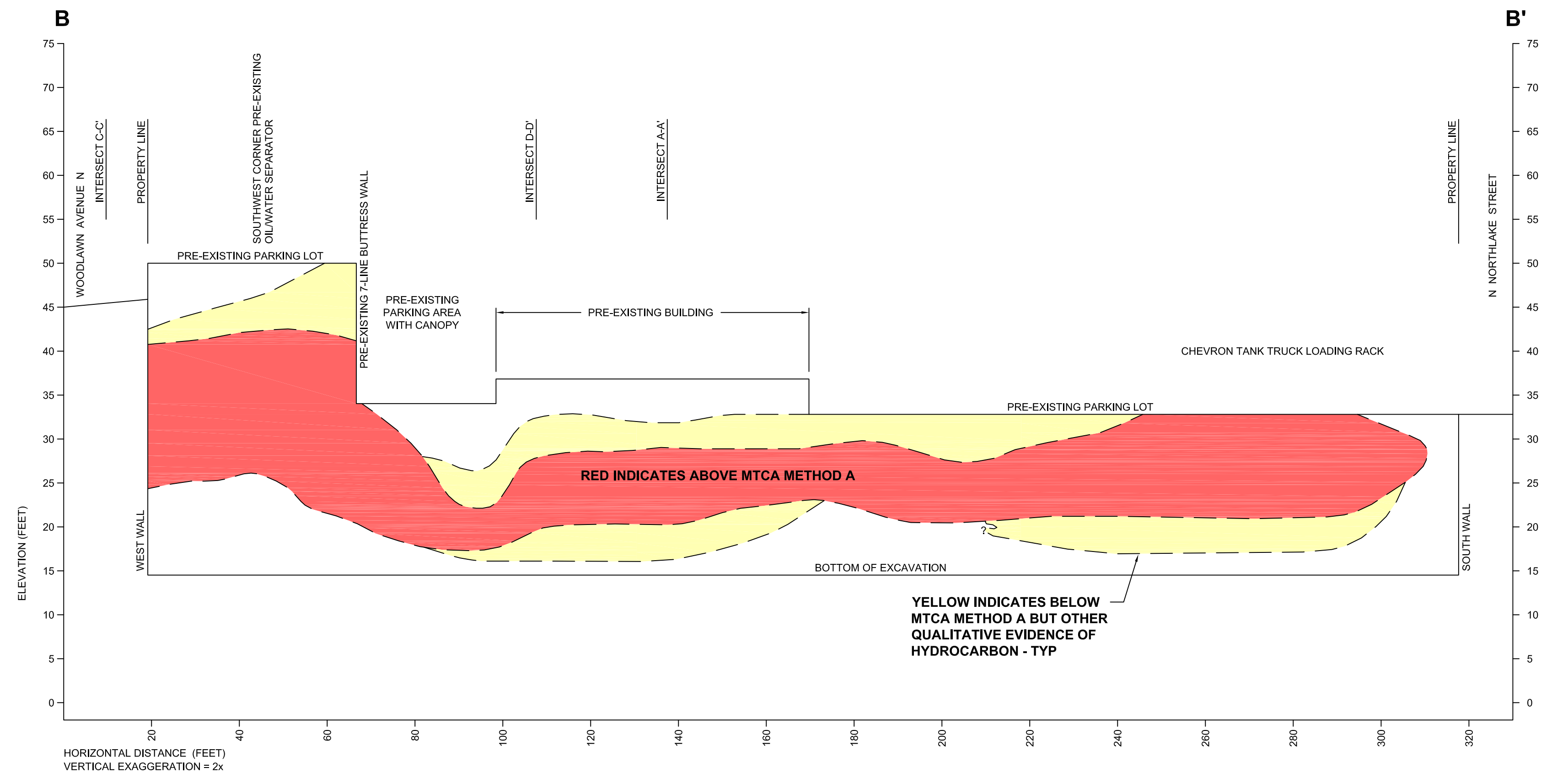
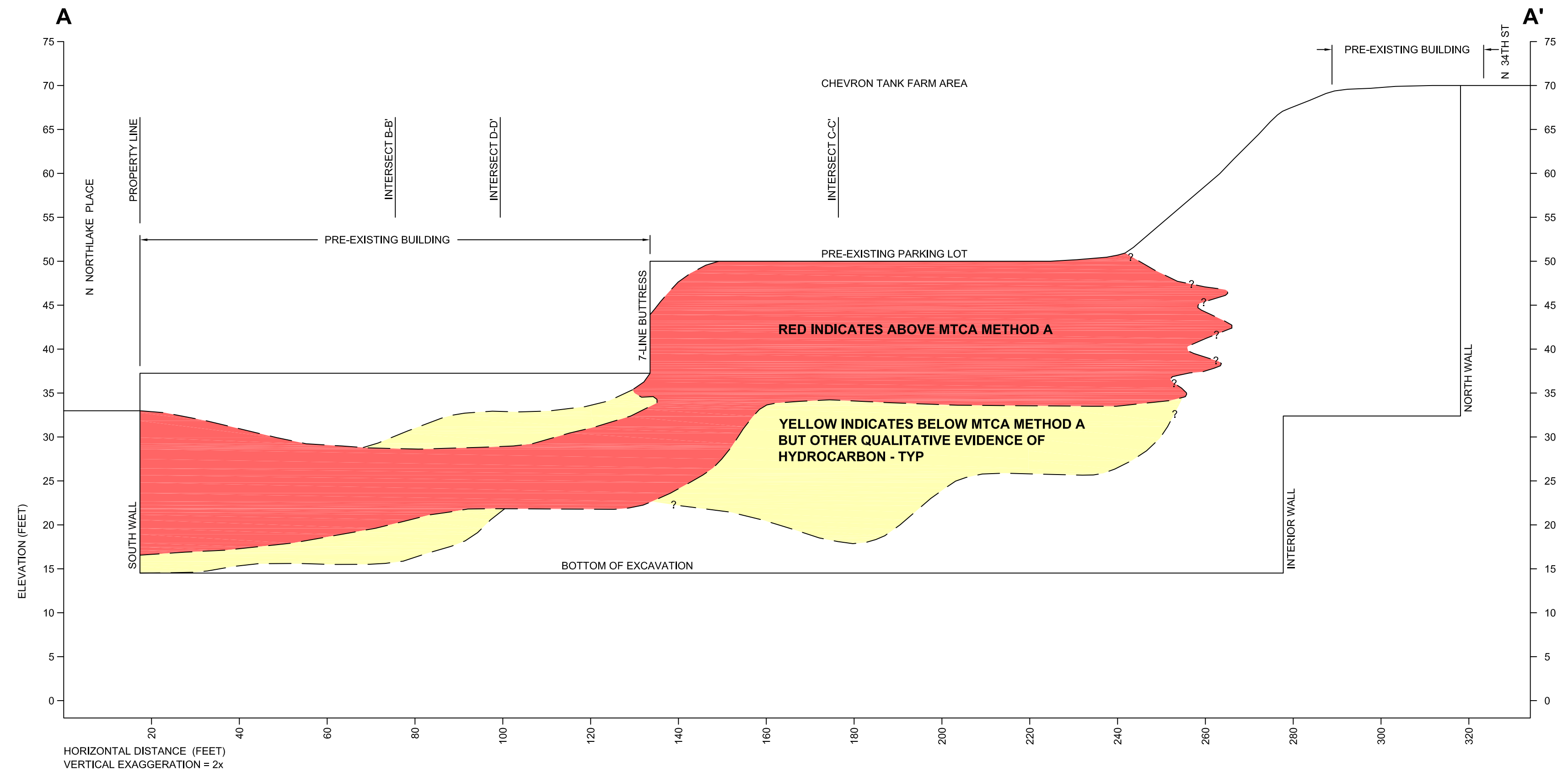
PROJECT No.: KV030772B

FIGURE 4

03/22 North Line Urban 03/22 Wall Section 2-15-09

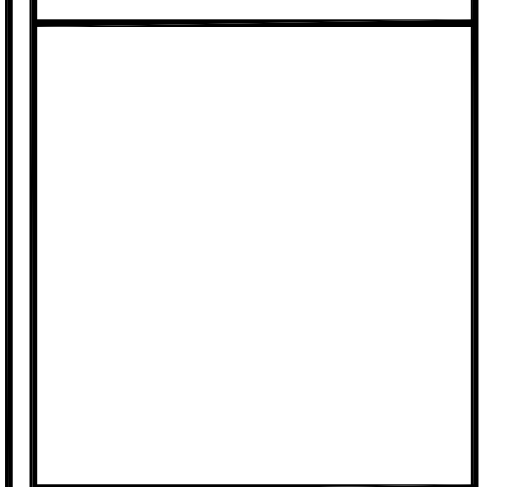
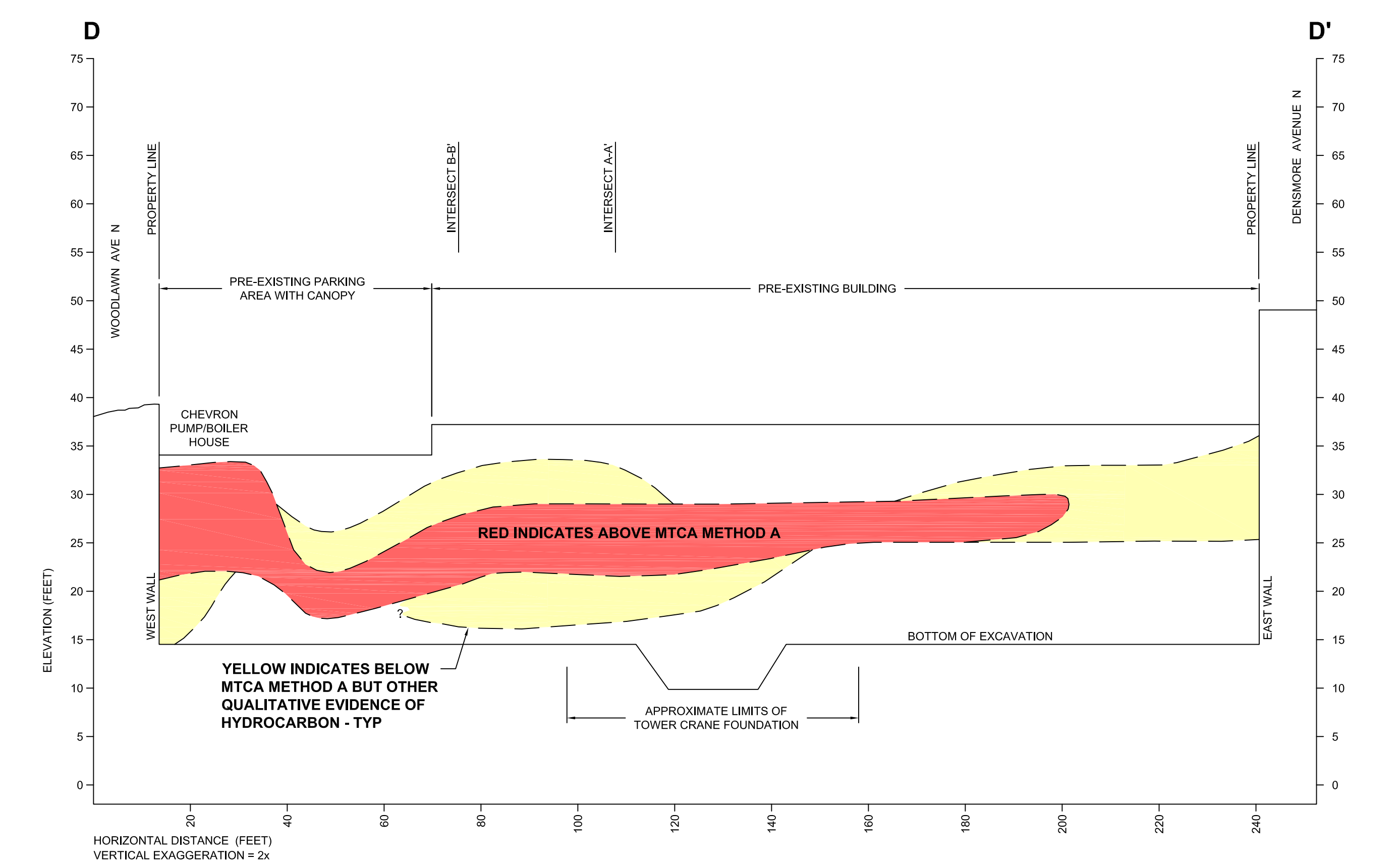
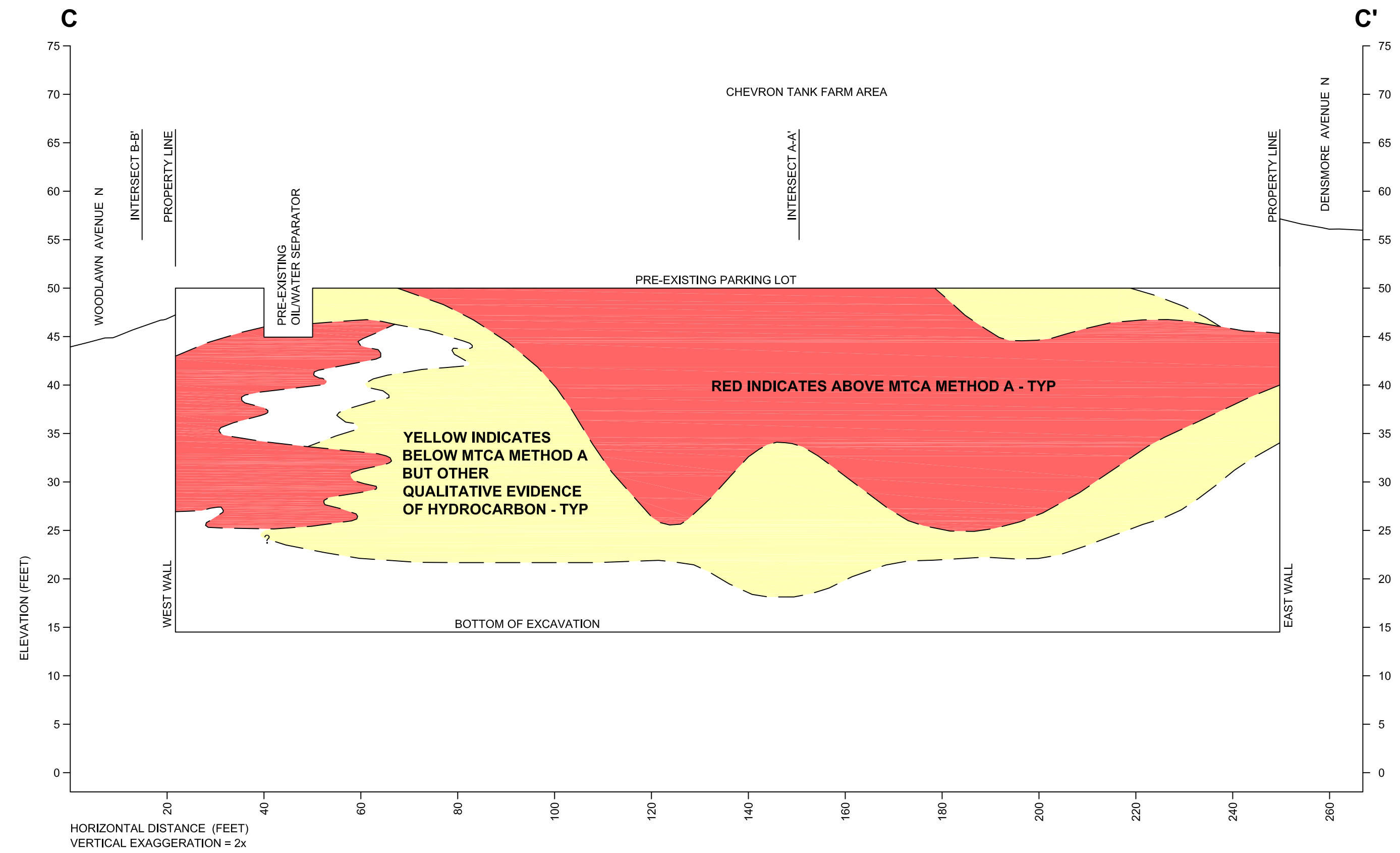
REFERENCE: GROUND SUPPORT





PROPERTY CROSS-SECTIONS  
NORTH EDGE TECHNOLOGY CENTER  
SEATTLE, WASHINGTON

DRAWN BY:	EIN
CHECKED BY:	FSM
DATE	3/15
PROJECT NO.	KV030772B
FIGURE	
5	



**PROPERTY CROSS-SECTIONS**  
**NORTH EDGE TECHNOLOGY CENTER**  
**SEATTLE, WASHINGTON**

DRAWN BY:	EIN
CHECKED BY:	FSM
DATE	3/15
PROJECT NO.	KV030772B
FIGURE	
6	