

Tacoma Smelter Plume Soil Safety Program Baltimore and Optimist Parks

June 11, 2015

Baltimore and Optimist Park Meeting



DEPARTMENT OF
ECOLOGY
State of Washington



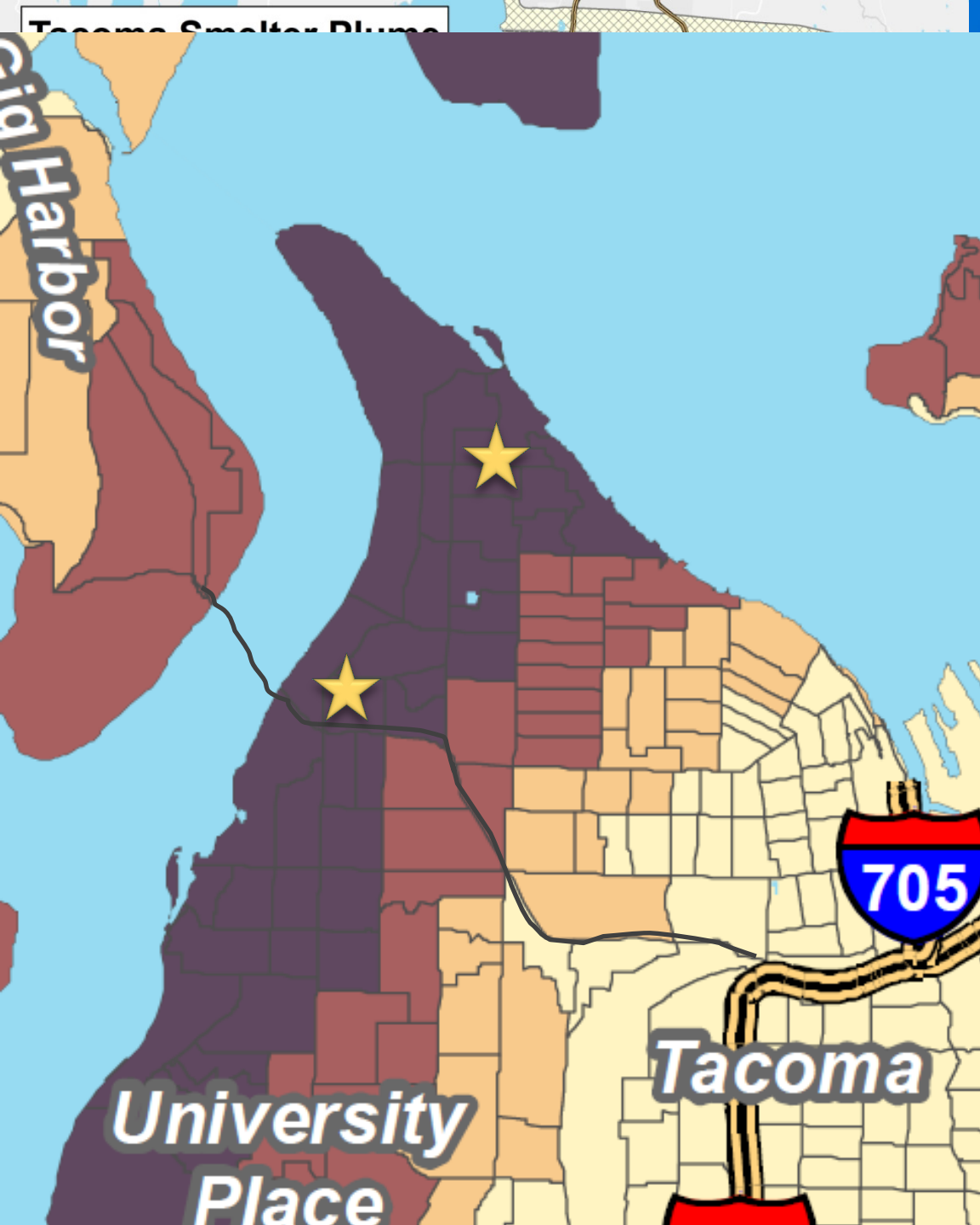
What are we going to cover?

- Tacoma Smelter Plume
- Healthy Actions
- Soil Safety Program
- Baltimore park cleanup
- Optimist park cleanup
- Yard Program – 2015 cleanup



Arsenic and Lead in Soils





Tacoma Smelter Plume

State cleanup levels
Arsenic = 20 ppm
Lead = 250 ppm

Healthy Actions

When working or playing **outside**

- ✓ Wear gloves for gardening
- ✓ Wash fruits and vegetables
- ✓ Build raised beds
- ✓ Cover bare patches of dirt



Inside the home

- ✓ Wash hands
- ✓ Take off shoes before coming inside
- ✓ Clean toys
- ✓ Damp dust and vacuum



The Soil Safety Program

Free program for play areas at existing:

- Schools
- Licensed childcares
- Parks
- Camps
- Multi-family public housing

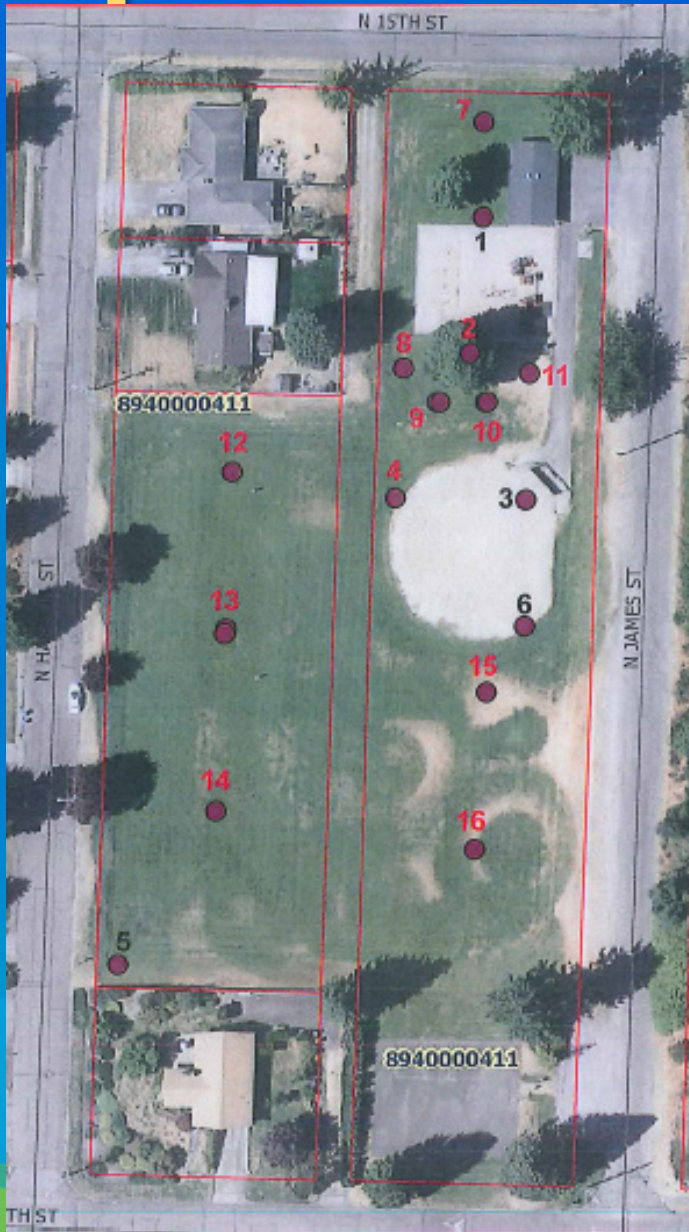


Baltimore Park Sampling



Arsenic within the Cleanup Area		
Depth	Average	Maximum
0-6 inches	84 ppm	177 ppm
6-12 inches	43 ppm	100 ppm

Optimist Park Sampling



Arsenic Concentrations

Depth	Average	Maximum
0-6 inches	44 ppm	79 ppm
6-12 inches	26 ppm	26 ppm

Baltimore Soil Safety Action Plan



Optimist Soil Safety Action Plan



Soil Safety Program Timeline

Construction Starts

- Baltimore and Optimist Parks July 2015

Construction Ends

- Baltimore and Optimist Parks November 2015

Parks Closed for Grass to Grow

- Winter 2015, possibly through summer 2016

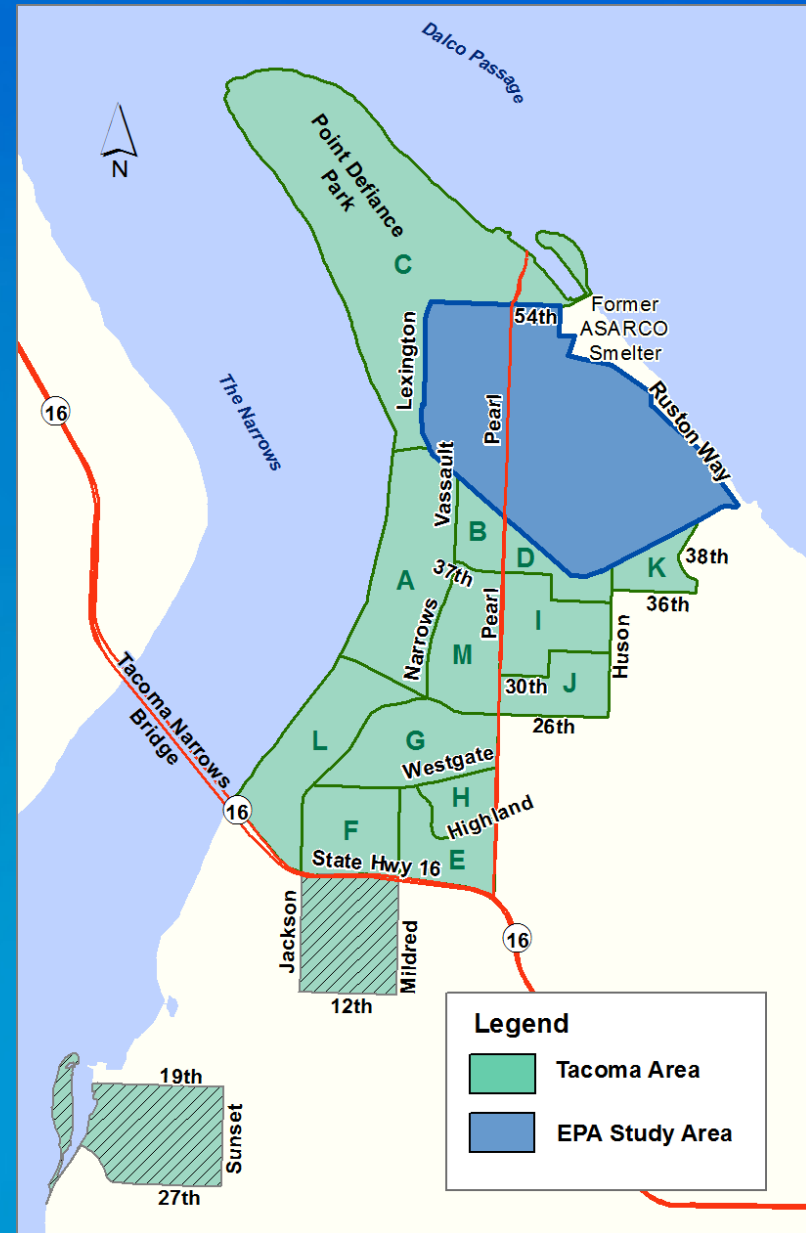
Yard Sampling and Cleanup Program

- Existing residential
- State-led
- Voluntary

Action Levels

Average arsenic = 100 ppm

Average lead = 500 ppm



Cleanup Schedule Tacoma & Ruston

2015

- Cleanup: 80+ yards
- Sampling: About 1000 yards

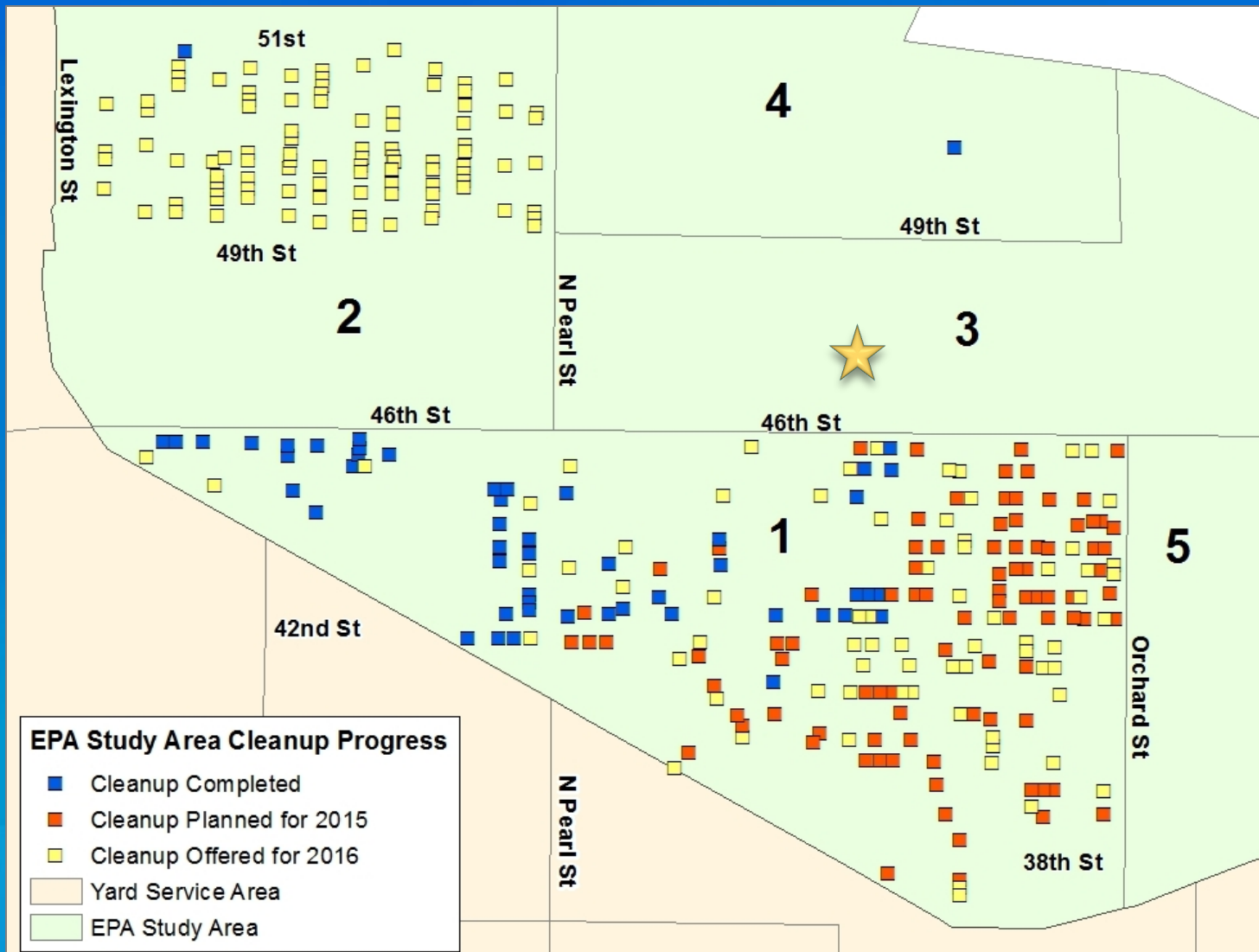
2016

- Cleanup: 80+ yards
- Sampling: Finish up sampling

2017 - 2023

- Cleanup: Up to 100 yards a year

Summer 2015 Yard Cleanups



Yard Sampling

- Sign up now
- Working neighborhood by neighborhood
- Arsenic in Soil Database

<https://fortress.wa.gov/ecy/areispublic/>

Yard Sampling or Health Related Questions

Tacoma Pierce County Health Department

(253) 798-3503

DirtAlert@tpchd.org



Construction Related Questions

Amy Hargrove

Ecology Remediation Manager

(360) 407-6262

Amy.Hargrove@ecy.wa.gov

Sarah Hamel

Metro Parks Tacoma Project Lead

(253) 305-1056

Sarahh@tacomaparks.com

Ecology Message Line

(360) 407-7688 (press 2)