

## Cleanup Update

The Department of Ecology (Ecology) and the B&L Custodial Trust (Trust) are cleaning up more contamination at the B&L Woodwaste site this summer.


Buried woodwaste at the site is contaminated with Asarco slag, which has leaked arsenic into soil and groundwater. Ecology is managing cleanup activities at the site. Funding comes from Asarco, Murray Pacific, Wasser & Winters, and Louisiana Pacific.

### Soil cleanup will likely start in early August

We are beginning another round of cleanup to remove arsenic-contaminated soil from drainage ditches around the site. We will:

- **Clear trees** so that machinery can access the ditches. Tree clearing will likely begin in early August.
- **Excavate contaminated soil** near the apartment complex (south ditch; see map below) and on the west side of the site (west ditch; see map on back). We will sample to confirm that all contaminated soil is removed.
- **Truck contaminated soils to a landfill.** Trucks will enter and exit through the north apartment complex entrance during clean-up. Spotters will look out for pedestrians when trucks are on site.
- **Treat contaminated water** that we find during this work.
- **Re-plant trees and fill excavated areas with clean soil.** Trees will be replanted in the fall after cleanup work is done.



 Approximate south ditch contaminated soil excavation area

**Cleanup Planned  
August—Mid-October  
2015**

### For More Information

#### Cleanup Questions

Mohsen Kourehdar  
Cleanup Project Manager  
WA Department of Ecology  
SWRO Toxics Cleanup Program  
P.O. Box 47775  
Olympia, WA 98504-7775  
(360) 407- 6256  
Mohsen.Kourehdar@ecy.wa.gov

#### Public Involvement Questions

Audrey Kuklok  
Public Involvement Coordinator  
(360) 407- 0067  
Audrey.Kuklok@ecy.wa.gov

#### Site Document Locations

Ecology's Toxics Cleanup Website  
<https://fortress.wa.gov/ecy/gsp/Sitepage.aspx?csid=2297>

WA Department of Ecology  
300 Desmond Drive SE  
Lacey, WA 98503  
By appointment only:  
Contact Susie Baxter  
PublicDisclosureSWRO@ecy.wa.gov  
(360) 407-6365

**Facility Site ID #: 1203  
Cleanup Site ID#: 2297**

## Past Site Cleanup Work

Since 1992, Murray Pacific and the Trust have finished most of the needed cleanup work. This included:

### Landfill

- Asarco consolidating the original landfill into a single waste pile. Later, a multi-layer capping system was installed to cover the waste pile. The cap prevents rain from flushing contamination out of the landfill.

### Groundwater and Stormwater Management

- Installing groundwater monitoring wells.
- Installing an underground wall to keep contaminated groundwater from leaving the landfill.
- ▭ Creating ponds to reroute clean groundwater around the landfill and direct stormwater runoff away from the landfill.

### Sediment

- Removing contaminated soil from the drainage ditches around the site.
- Current soil removal areas.

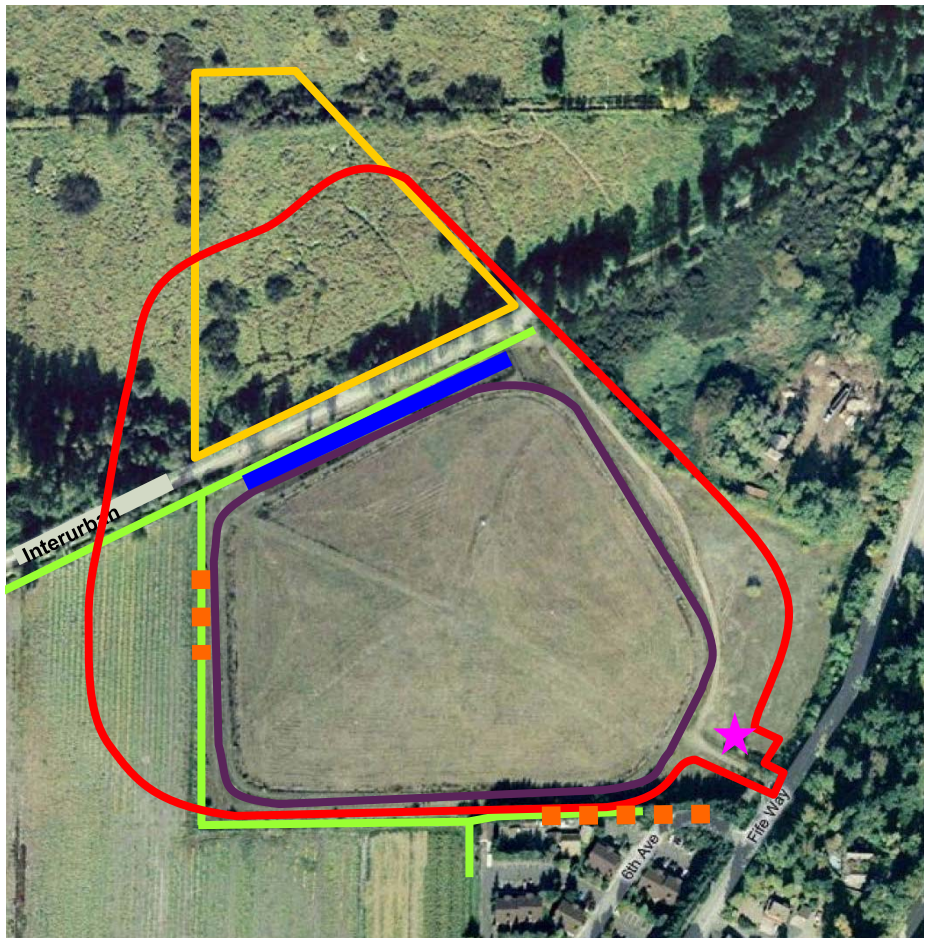
### Wetlands

- ▭ Treating contaminated groundwater in the wetlands to keep arsenic from moving further towards Hylebos Creek.

### Groundwater Treatment System

- ★ Building a groundwater treatment system.
- Installing groundwater pumping equipment under and around the landfill and wetlands. Contaminated water is being cleaned to meet groundwater quality standards.

You can read more about site cleanup work on our website (see box on page 1).



B&L Woodwaste site, 1522 Fife Way E, Milton

To request ADA accommodation for disabilities, or printed materials in a format for the visually impaired, call Ecology at (360) 407-6300.

Persons with impaired hearing may call Washington Relay Service at 711.

Persons with speech disability may call TTY at 877-833-6341.

¿Habla Español? Si necesita esta información en español, contáctenos a [preguntas@ecy.wa.gov](mailto:preguntas@ecy.wa.gov)