

Explanation

- WB-1 Previous Boring Location
- SB-7 Soil Boring (June 2015)
- VP-3 Vapor Probe (October 2013)
- Sanitary Sewer Line
- Sanitary Sewer Cleanout
- Storm Drain Pipeline
- Water Line
- Storm Drain Inlet

pre

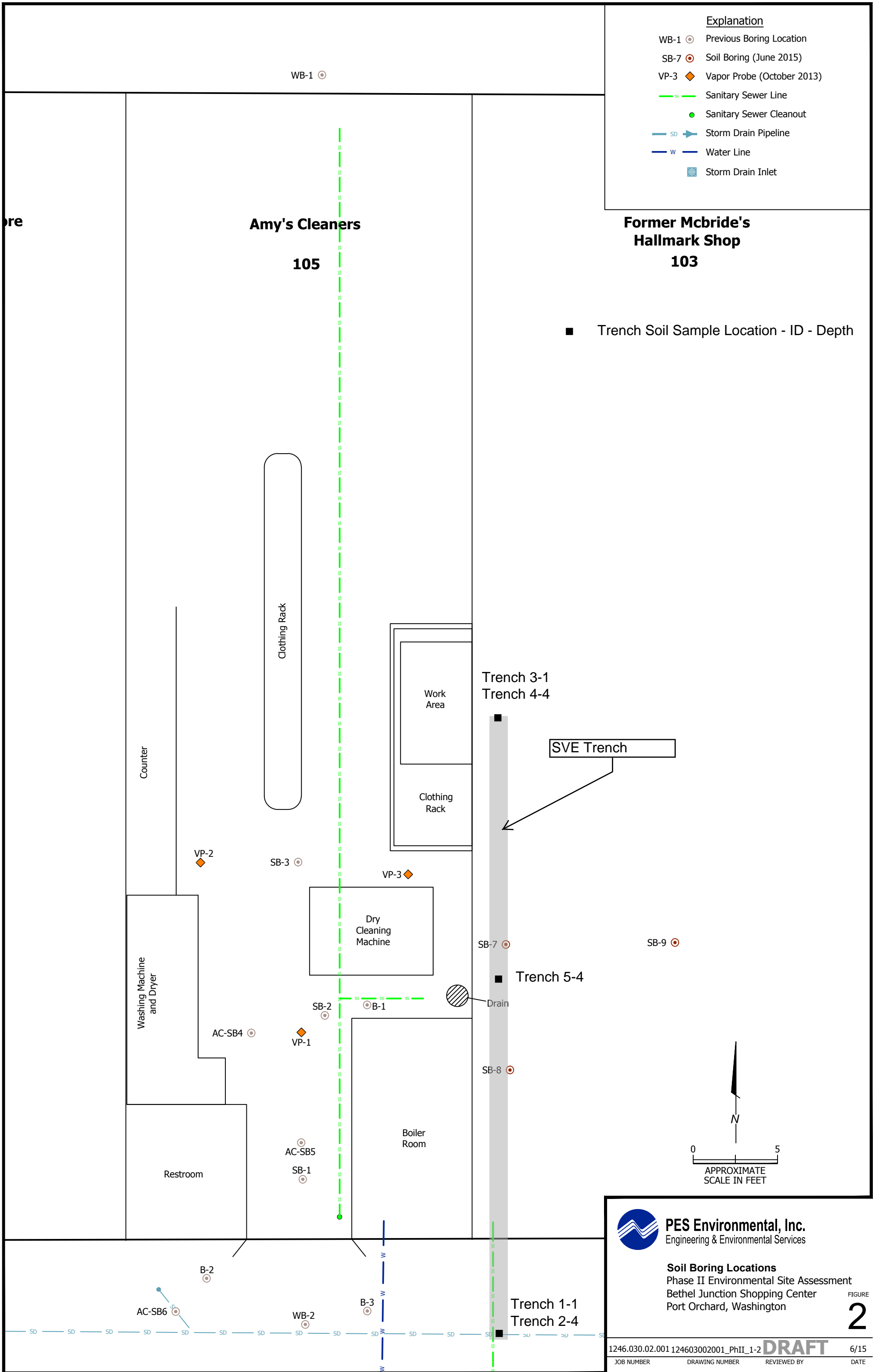
**Amy's Cleaners**

**105**

**Former McBride's  
Hallmark Shop**

**103**

■ Trench Soil Sample Location - ID - Depth



**PES Environmental, Inc.**  
Engineering & Environmental Services

**Soil Boring Locations**  
Phase II Environmental Site Assessment  
Bethel Junction Shopping Center  
Port Orchard, Washington

FIGURE

**2**