

Everett Smelter Lowlands Area Environmental Reports Available for Review and Comment

The Department of Ecology (Ecology) recently completed a Supplemental Remedial Investigation and a Feasibility Study for the Everett Smelter Cleanup Site's Lowlands Area (Lowlands). Two reports summarizing this work are now available for public review and comment. The Lowlands is a mostly industrial part of the Everett Smelter Cleanup Site. It is located along the Snohomish River east of East Marine View Drive (see page two).

Extensive sampling showed areas of arsenic, lead and mercury contamination in soil, groundwater, sediment, surface water, stormwater, and water seeping through the bank into the river (seeps). The contamination is above state cleanup levels and will require cleanup.

This fact sheet contains information about the comment period on the Lowlands reports and an update for the entire Everett Smelter Cleanup Site.

You are Invited to:

- **Review** the Supplemental Remedial Investigation and Feasibility Study Reports. **See box to the right for more information about how to access the documents.**
- **Send** your comments to Ecology for consideration. Comments accepted from October 5 – November 3.
- **Attend** the public meeting to ask questions, provide written comments, and hear an update on the entire Everett Smelter cleanup site. The meeting is:

October 15, 2015, 6:30– 8:30 p.m.
Hawthorne Elementary School Cafeteria
1110 Poplar St, Everett, WA 98201

Public Comments Accepted

October 5 - November 3

Submit Comments and Technical Questions to:

Sandra Matthews
Lowlands Site Manager
Northwest Regional Office
Phone: (425) 649-7206
Email: Sandra.Matthews@ecy.wa.gov

Meg Bommarito
Project Manager
Northwest Regional Office
Phone: (425) 649-7256 or
(425) 412-0372 (cell)
Email: Meg.Bommarito@ecy.wa.gov

Document Review Locations:

Everett Public Library

2702 Hoyt Ave.
Everett, WA 98201
Phone: (425) 257-8010

Washington Department of Ecology Northwest Regional Office

3190 160th Ave SE
Bellevue, WA 98008
Call for an appointment:
(425) 649-7190

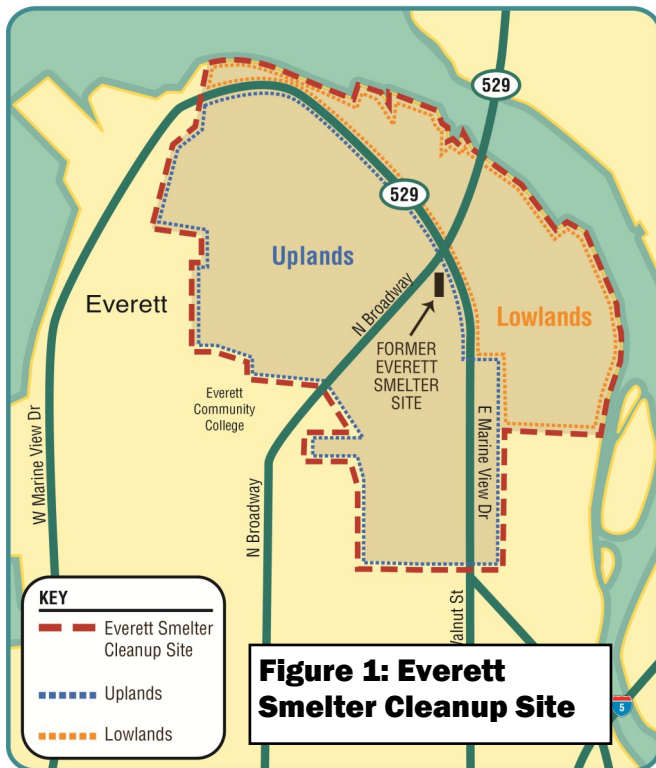
Ecology's Website

http://www.ecy.wa.gov/programs/tcp/sites_brochure/asarco/2011/Lowlands/Lowlands.html

Marieke Rack

Public Involvement Coordinator
Northwest Regional Office
Phone: (425) 649-7052
Email: Marieke.Rack@ecy.wa.gov

Facility Site ID #2744
Cleanup Site ID #4298



Lowlands Area Background

- Ecology completed a Remedial Investigation for the entire Everett Smelter Site in 1995 (Figure 1). A lot of data was collected about site contamination but more information was needed about the Lowlands.
- In 2014, Ecology completed more Lowlands sampling to better determine the extent of contamination. Lead, arsenic and mercury from slag, debris and air deposition were found in soil, groundwater, surface water, sediment, seeps, and stormwater above state cleanup levels (see page 3). The **Supplemental Remedial Investigation Report** summarizes this information and is now available for comment.
- Using this information, Ecology prepared a **Feasibility Study** to identify areas for cleanup, compare possible cleanup alternatives and propose actions to address contamination in the Lowlands. This report is also now available for comment.

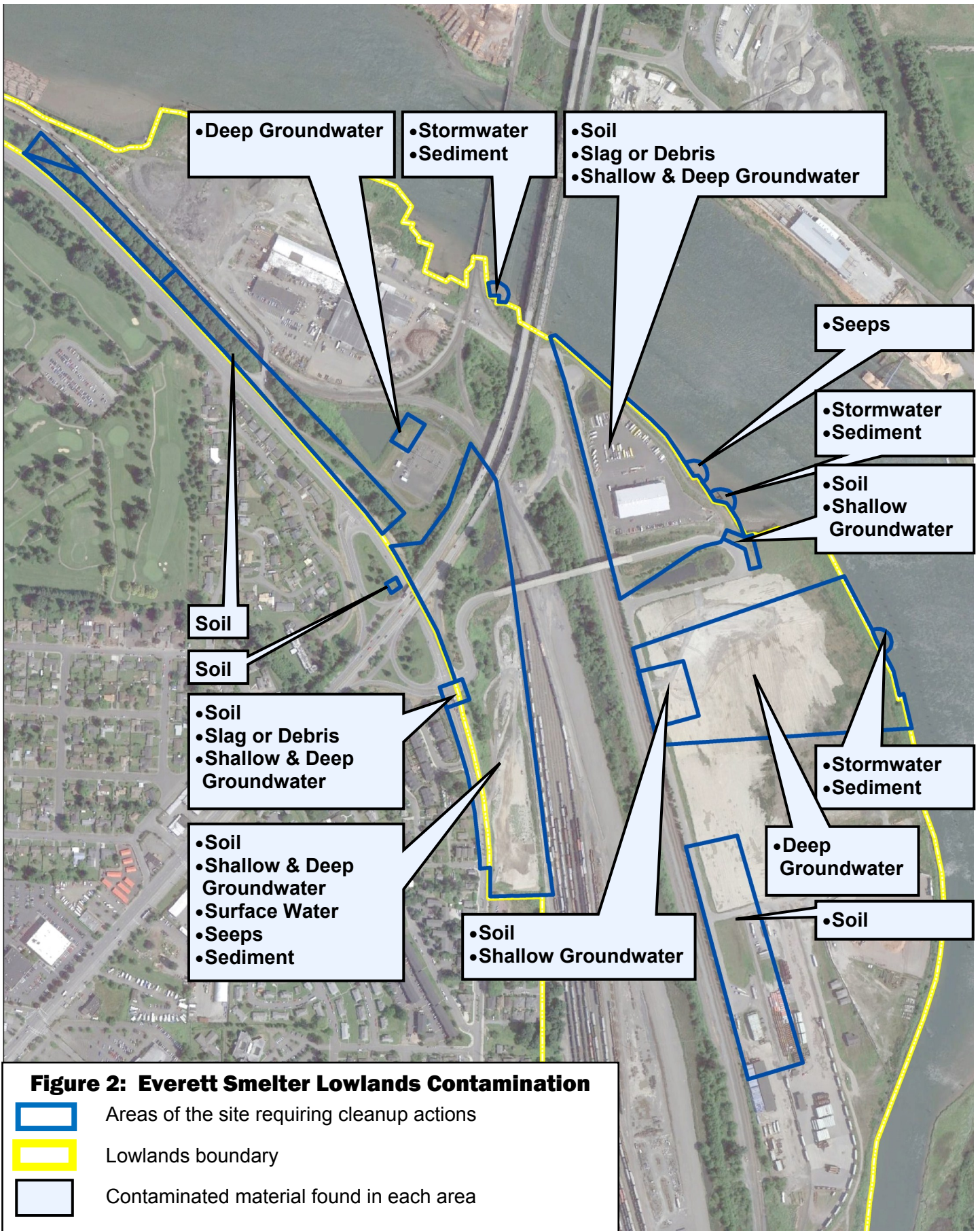
More Information About the Reports Available for Comment

Supplemental Remedial Investigation Report

- Describes the nature and extent of contamination. See Figure 2.
- Identifies all the areas of the Lowlands impacted by Everett Smelter contamination.
- Identifies arsenic, lead and mercury as key contaminants. More information about the main contaminants is available at: <http://www.atsdr.cdc.gov/toxfaqs/index.asp>
- Summarizes what contamination was found above state cleanup levels and in what material:
 - **Arsenic** in soil and shallow and deep groundwater throughout the site.
 - **Lead** in soil and shallow and deep groundwater in some areas of the site.
 - **Mercury** in surface water, shallow groundwater, and sediment below outfalls along shoreline in limited areas of the site.

Feasibility Study Report

- Evaluates possible cleanup alternatives and technologies for each of the contaminated areas in the Lowlands.
- Describes how the different alternatives for each area will protect human health and the environment.
- Proposes preferred cleanup actions to address each area of contamination. Some of these alternatives include (see Figure 3):
 - Capping contaminated soil.
 - Installing groundwater treatment wells.
 - Removing soil and sediment.
 - Repairing pipes and drains that carry contamination.
 - Monitoring contamination levels for changes after source removal.
 - Setting up institutional controls, like fencing and signs, that will keep people away from contamination.



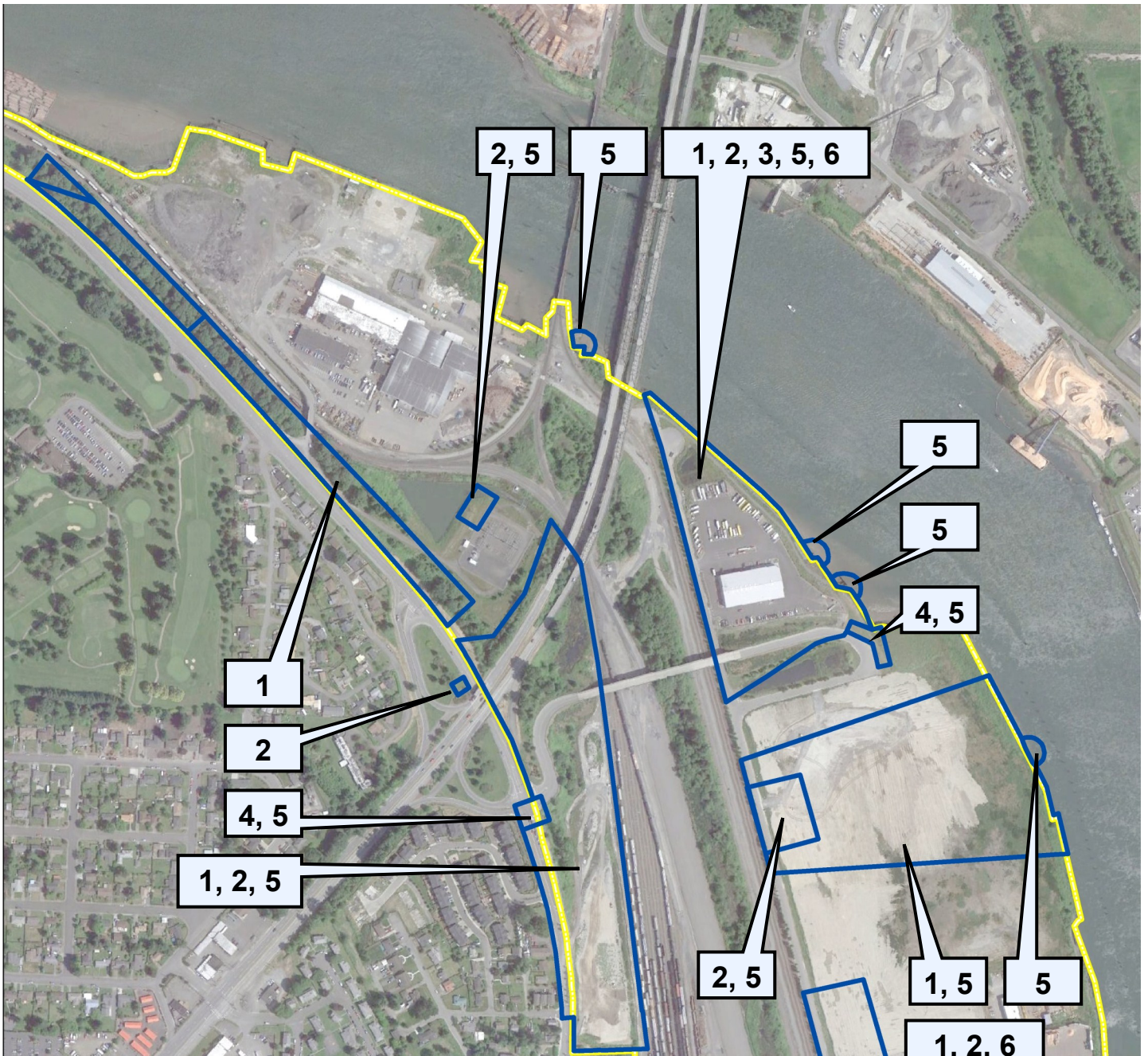
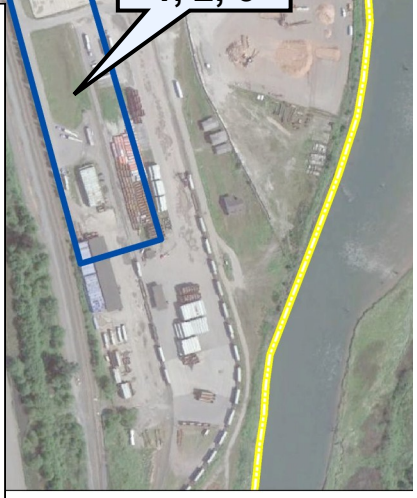


Figure 3: Preferred Cleanup Option for the Lowlands

- 1 Institutional Controls:** Includes fencing & signage to keep people away from contaminated areas.
- 2 Capping:** Placing pavement, plastic and/or clean soil over the top of contaminated soil.
- 3 In-Situ Treatment:** Using chemicals or other materials to treat or stabilize the contamination in place.
- 4 Removal:** Remove contaminated water, soil or sediment from the area.
- 5 Natural Recovery:** Monitor contamination levels for changes after source removal.
- 6 Repairs:** Fix pipes and drains that may be moving contaminants.



What Happens Next?

- After the public comment period, Ecology will review and consider all comments that have been received. Changes may be made to the documents.
- The Supplemental Remedial Investigation and Feasibility Study reports will be finalized.
- Ecology will develop a draft Cleanup Action Plan which outlines cleanup decisions. A public comment period will be held on this document.
- The Cleanup Action Plan will be finalized and cleanup actions will begin when funding is available.

Cleanup Site Background

The Everett Smelter, in operation from 1894 to 1912, processed lead, gold, silver, and arsenic. In 1912, the smelter was demolished.

Ecology discovered soil contamination in 1990. Contamination was found at the former smelter site and a surrounding area. The site was divided into two parts. The Uplands Area (on the site's west side) has contaminated soil from smelter activities. Cleanup has been underway for several years. The Lowlands Area (on the site's east side) is mostly industrial. Until recently, the extent of contamination was not known.

For more background on the cleanup and how to keep you and your family safe from contamination, visit our website: http://www.ecy.wa.gov/programs/tcp/sites_brochure/asarco/es_main.html

Uplands Area Update

Since Everett Smelter contamination was discovered, Ecology has removed arsenic-contaminated soil from more than 280 properties. Bankruptcy settlement funds, received in 2009, have funded 120 property cleanups to date. The focus in the Uplands has been the removal of contaminated soil from residential properties. This year, Ecology:

- Sampled 60 residential properties
- Planned for and began cleanup at American Legion Memorial Park
- Started cleanup planning for Wiggums Hollow Park and Viola Oursler Overlook. These cleanups are tentatively scheduled for 2016.
- Finished 19 property cleanups north of Broadway.
- Prepared for cleanup of 22 properties this fall.



The remaining bankruptcy settlement funds will support the 2015 cleanup efforts and additional property sampling. Ecology will need additional funds for residential cleanup beyond 2015.



Do you have questions about your property's cleanup status?

Contact the project hotline for more information: (425) 446-1024





DEPARTMENT OF
ECOLOGY

State of Washington

3190 160th Avenue SE
Bellevue, WA 98008

Everett Smelter Cleanup Site Snohomish County, WA

Everett Smelter Lowland Area Environmental Reports Available for Review and Comment

Public Comment Period:
October 5 - November 3

Public Meeting:
October 15
6:30-8:30 p.m.

Ecology đã hoàn tất các cuộc nghiên cứu về sự ô nhiễm trong vùng đất thấp tại Địa điểm Dọn sạch thuộc Hãng luyện kim Everett. Ecology mời quý vị đóng góp ý kiến cho hai tài liệu và đến tham dự buổi họp công cộng. Quý vị muốn có thêm tin tức tiếng Việt xin vui lòng liên lạc ông Lê Teddy tại số (360) 407-6948.

Министерство охраны окружающей среды завершило исследование по заражению почв низины в районе работ по очистке территории бывшего металлургического предприятия в Эверетте. Министерство просит вас высказать ваше мнение по поводу двух документов, и приглашает вас на общественное собрание. Чтобы получить информацию на русском/арабском языке, позвоните Marieke Rack по телефону 425-649-7052 и назовите язык. Она поставит звонок на ожидание (пожалуйста, будьте терпеливы) и вызовет на телефонную линию переводчика.

اكمل علم البيئة دراسات مؤخرًا بشأن التلوث في منطقة الأراضي المنخفضة في موقع تنظيف مصهر افريت. علم البيئة يطلب تعليقاتكم على وثيقتين ويدعوكم للاجتماع العام. للحصول على معلومات العربية يرجى الاتصال بماريكا راك على الرقم 425-649-7052 وأبلغها بلغتك المفضلة. سوف تطلب منك الانتظار (يرجى أن تكون صبوراً) وتأتي لك بترجم على الخط.

Ecología recientemente completó unos estudios sobre la contaminación en el área bajo del Sitio Contaminado de la Fundición de Everett. Ecología está solicitando sus comentarios referentes a dos documentos y les invite a asistir a una reunión pública. Para obtener información en español, favor de llamar a Sonia Fernández al 425-649-7233 o mandar un email a preguntas@ecy.wa.gov.

Accommodation Requests

To request ADA accommodation including materials in a format for the visually impaired, call the Toxics Cleanup Program at (425) 649-7000. Persons with impaired hearing may call Washington Relay Service at 711. Persons with speech disability may call TTY at 877-833-6341. speech disability, call 877-833-6341.