

**SITE SUMMARY REPORT
FORMER UNOCAL BULK PLANT FACILITY NO. 306562
1329 West Woodin Avenue
Chelan, Washington**

August 31, 2015

**Prepared for:
Washington State Department of Ecology
Central Regional Office
Yakima, Washington**

**Prepared by:
Leidos Engineering, LLC
18912 North Creek Parkway, Suite 101
Bothell, Washington 98011**

**On Behalf of:
Chevron Environmental Management Company
145 S. State College Blvd
Brea, California 92821**

SITE SUMMARY REPORT
FORMER UNOCAL BULK PLANT FACILITY NO. 306562
1329 West Woodin Avenue
Chelan, Washington

Prepared for:
Washington State Department of Ecology
Central Regional Office
Yakima, Washington

Prepared by:
Leidos Engineering, LLC
18912 North Creek Parkway, Suite 101
Bothell, Washington 98011

On Behalf of:
Chevron Environmental Management Company
145 S. State College Blvd
Brea, California 92821

Megan Gay
Senior Project Manager

Don Wyll
Portfolio Manager

TABLE OF CONTENTS

1. INTRODUCTION	1
2. SITE DESCRIPTION AND BACKGROUND	1
2.1 Site Geology and Hydrogeology	1
3. SUMMARY OF SITE INVESTIGATION AND REMEDIAL ACTIONS	2
3.1 Environmental Investigations (1989 to 2001)	2
3.2 2001 Remedial Excavation	3
3.3 Remediation System Installation (2001)	3
3.4 Additional Soil Investigations (2003 and 2005)	4
3.5 Remedial Excavation (2005)	4
3.6 Supplemental Site Assessment (2012)	4
3.7 Groundwater Monitoring	5
4. CLEANUP LEVELS	5
5. NATURE AND EXTENT OF PETROLEUM IMPACTS	5
5.1 Soil	5
5.2 Groundwater	5
5.3 Terrestrial Ecological Evaluation	6
6. CONCLUSION	6
7. REFERENCES	7

FIGURES

Figure 1	Site Map and Extent of the 2001 Excavation
Figure 2	Extent of the 2005 Excavation and Extent of Petroleum Hydrocarbons in Soil

TABLES

Table 1	Historical Soil Analytical Results – TPH, BTEX and MTBE
Table 2	Groundwater Monitoring Data and Analytical Results

APPENDIX

Appendix A	Hydrographs
Appendix B	Terrestrial Ecological Evaluation

**SITE SUMMARY REPORT
FORMER UNOCAL BULK PLANT FACILITY NO. 306562**

1. INTRODUCTION

This Site Summary Report is being submitted by Leidos Engineering LLC (Leidos) on behalf of Chevron Environmental Management Company (CEMC) to the Washington State Department of Ecology (Ecology). This report summarizes the site investigation activities and remedial actions that have been performed at the former Union Oil Company of California (Union Oil) Bulk Plant No. 306562 located in Chelan, Washington (the site). The purpose of the report is to demonstrate that the nature and extent of petroleum hydrocarbon impacts have been defined and that the historical impacts have been adequately remediated to be protective of human health and the environment. This report is being submitted to Ecology concurrent with an application for enrollment of the site in the Ecology Voluntary Cleanup Program (VCP).

2. SITE DESCRIPTION AND BACKGROUND

Chevron Facility No. 306562 is located at 1329 West Woodin Avenue in Chelan, Washington. Union Oil purchased the property in 1940 and the site operated as a bulk plant for the storage and distribution of petroleum fuel from 1949 to 1989¹. There were five 20,000-gallon above ground storage tanks (ASTs) (three gasoline, one diesel, and one heating oil) and one 12,000-gallon gasoline AST, located at the southeast portion of the site. One 280-gallon underground storage tank (UST), used to store heating oil, was adjacent to an office on the western side of the site. The site operated as a bulk plant until September 1989, when the bulk plant was permanently closed. Facilities on the property included the office building, wood-floored warehouse, a truck loading rack, truck unloaders, a barrel storage area, and pumps and piping. All ASTs and site structures were removed in 1992.

The site was sold to Chelan Parking, LLC in 2005 and currently the northern part of the site is paved and used as a parking lot. The southern portion of the site is vacant and unpaved. The site borders Woodin Avenue (Highway 97A) and a ferry terminal to the north and northwest. Surrounding properties include a water amusement park to the south and residences to the southeast and east. Lake Chelan is located approximately 200 feet to the north-northwest of the site.

2.1 SITE GEOLOGY AND HYDROGEOLOGY

Subsurface soil conditions consist of sand, gravel, and cobbles with varying amounts of silt. The upper portion of the site consists of sandy gravel and cobbles to depths of up to 20 feet below ground surface (bgs). Underlying the upper portion is fine to medium sand with some gravel and cobbles and varying amounts of silt that can extend to a depth of up to 39 feet bgs.

Groundwater levels at the site are directly influenced by the elevation of Lake Chelan. The elevation of the lake is controlled by a dam located on the east end of the lake. The lake level is

1. Previous reports prepared for the site which indicate that the bulk fuel plant began operating in 1927 are in error. A real estate records research performed for a 1996 Phase I Environmental Site Assessment shows that prior to 1940, Union Oil operated a bulk plant approximately 5.5 miles east of the subject site. Structures from the 1927 bulk plant were transferred to the subject site between 1940 and 1949 (GeoEngineers, 1996).

lowered approximately 13 feet in October of each year. Groundwater is present at depths that vary between 14 and 29 feet bgs. Groundwater flow direction varies with fluctuations of the lake level at a gradient that is relatively flat. Groundwater flow direction is generally to the northwest and west towards the lake.

3. SUMMARY OF SITE INVESTIGATION AND REMEDIAL ACTIONS

Following decommissioning of the bulk plant, Union Oil initiated environmental investigations and remedial actions at the site. These investigations and remedial actions are summarized in this section. Figures 1 and 2 present the locations of environmental samples and remedial activities. Soil and groundwater data are summarized in Tables 1 and 2.

Historical remedial actions included several phases of soil excavation in 2001 to remove petroleum contamination for offsite disposal (Figure 1 and Table 1). Groundwater remediation was partially completed in 2001 and 2002 with an air-sparge and soil vapor extractions system (AS/SVE) system, which is no longer onsite. The AS/SVE did not completely remediate the residual contamination. In 2005, the remaining residual soil contamination was excavated to groundwater depth (Figure 2). A limited volume of impacted soil was left in place at a depth of 25 feet bgs.

3.1 ENVIRONMENTAL INVESTIGATIONS (1989 TO 2001)

Several environmental investigations were performed at the site between 1989 and 1995. During these investigations, eight groundwater monitoring wells (MW-1 through MW-8), and eighteen test pits (TP-1 through TP-3 [1989] and TP-1 through TP-15 [1995]) were completed at the site. In addition, a surface soil sample (WH-1) was collected beneath the former warehouse and a shallow sample (S-1) was collected near the former ASTs (GeoEngineers, 1990, 1991, 1993, 1996; MFA, 2001b).

Soil and groundwater samples were analyzed for benzene, toluene, ethylbenzene, and total xylenes (BTEX) and for total petroleum hydrocarbons (TPH). In addition, groundwater samples were analyzed for total lead from 1991 to 1999.

Petroleum hydrocarbon impacts were identified in the following areas of the site (Figure 1):

- the northern Truck Loading Rack area;
- the pre-1968 Truck Loading Rack area;
- the Barrel Storage Area;
- east of the former warehouse platform;
- near the tank farm containment wall and former ASTs;
- the former Truck Unloaders area; and
- near the former 280-gallon heating oil UST.

Petroleum hydrocarbons impacts to soil were identified to a depth of 20 feet bgs; the maximum depth explored. Petroleum hydrocarbon and lead impacts to groundwater were identified as site-wide (GeoEngineers, 1991).

In August 1995, in-situ testing was performed to evaluate the effectiveness of SVE, pump and treat, and air sparging methods to remediate impacted soil and groundwater at the site. Air sparging was selected as the most effective remediation method based on the testing results and distribution of impacted soil and groundwater at the site (GeoEngineers, 1996).

3.2 2001 REMEDIAL EXCAVATION

During April and May 2001, remedial excavation activities were performed in six areas of the site where previous environmental investigations identified impacted soil. Soil samples were analyzed for petroleum hydrocarbons and BTEX. The excavation areas are described below.

Site Area	Area of Excavation (sq ft)	Depth of Excavation (feet bgs)
Former Truck Unloaders Area	410	14
Pre-1968 Truck Loading Area	470	11
Northern Truck Loading Area	370	13
Former Barrel Storage Area	150	3.5
Former AST Area	440	6
Former UST Area	100	10

Approximately 380 cubic yards of soil were excavated from the six areas. Excavated soil was segregated into clean and impacted soil stockpiles. Approximately 80 cubic yards of soil were used as “clean” backfill in the excavations. The remaining 300 cubic yards were disposed of offsite (MFA, 2001a).

3.3 REMEDIATION SYSTEM INSTALLATION (2001)

The AS/SVE system was installed at the site in 2001. Three air sparge points (AS-1 through AS-3) were installed with the screen set between 29 and 31 feet bgs. Soil samples collected from the borings were analyzed for petroleum hydrocarbons and BTEX. Concentrations of gasoline- and diesel-range hydrocarbons, ethylbenzene and total xylenes exceeded the Model Toxics Control Act (MTCA) Method A cleanup levels in the sample collected from AS-1. Petroleum hydrocarbon concentrations in the samples from AS-2 and AS-3 were below cleanup levels.

Monitoring wells MW-1, MW-5, and MW-8 were plumbed to the AS/SVE system. The system began operating on August 9, 2001. Following a breakdown on August 15, the system was restarted on September 5, 2001 (MFA, 2001c).

During the system operation, approximately 648 pounds of volatile petroleum hydrocarbons were destroyed. The system was deactivated and removed from the site in July 2002 (MFA, 2002).

3.4 ADDITIONAL SOIL INVESTIGATIONS (2003 AND 2005)

Thirteen soil borings (GP-1 through GP-5, B-1 through B-8) were advanced to determine if petroleum hydrocarbon concentrations remaining in soil at the site exceeded the MTCA Method A cleanup levels. Soil samples were analyzed for petroleum hydrocarbons and BTEX (MFA, 2003; ENSR, 2005).

Concentrations of gasoline- and diesel-range hydrocarbons exceeded cleanup levels in the soil samples collected from borings B-5 and B-6; which were located in the central portion of the site and near the former Truck Unloaders, respectively (ENSR, 2005).

3.5 REMEDIAL EXCAVATION (2005)

A remedial excavation was performed to remove petroleum hydrocarbon impacted soil near wells MW-1 and MW-5 and to verify removal of potentially impacted soil beneath 1989 test pit TP-1. The excavation area around well MW-1 extended to depths between 25 and 29 feet bgs. The excavation area around well MW-5 extended to a depth of 25 feet bgs (Figure 2).

Confirmation samples were collected from the excavation sidewalls and analyzed for petroleum hydrocarbons, metals, polychlorinated biphenyls (PCBs), volatile organic compounds (VOCs) and polycyclic aromatic hydrocarbons (PAHs). All detected analyte concentrations were below their respective MTCA Method A cleanup levels.

Only two confirmation samples, 036/29' and 037/25', were collected from the excavation floor due to groundwater intrusion at 25 feet bgs. Samples were collected also from the borings installed as replacement of wells MW-1 (MW-1A) and MW-5 (MW-5A). All samples were analyzed for petroleum hydrocarbons and BTEX. No analytes of concern were detected in the samples collected from the eastern side of the excavation, 036/29' and MW-1A.

Diesel-range hydrocarbons exceeded the MTCA Method A cleanup level in sample 037/25', which was collected from the western side of the excavation. Gasoline- and diesel-range hydrocarbons were detected in the 26-foot bgs sample collected from well MW-5A. The gasoline-range concentration (260 mg/kg) exceeded the MTCA Method A cleanup level and the diesel-range concentration was below the MTCA Method A cleanup level. No analytes were detected in the sample collected at 31 feet bgs from well MW-5A.

Wells MW-1, MW-3, MW-4, and MW-5 as well as air sparge points AS-1 through AS-3 were destroyed during the 2005 remedial excavation activities (ENSR, 2006).

3.6 SUPPLEMENTAL SITE ASSESSMENT (2012)

In March 2012, 11 soil borings (SB-1 through SB-11) and three monitoring wells (MW-6A, MW-9, and MW-10) were installed at the site. Monitoring well MW-6A was installed to replace the previously abandoned monitoring well MW-6. Soil samples were analyzed for petroleum hydrocarbons, BTEX, and methyl tertiary-butyl ether (MTBE).

In addition, selected samples were analyzed for the following constituents:

- Carcinogenic PAHs (cPAHs) and naphthalenes;
- Extractable petroleum hydrocarbons (EPH) and volatile petroleum hydrocarbons (VPH);
- Ethylene dibromide (EDB), ethylene dichloride (EDC), and n-hexane; and

- Fractional organic carbon (FOC).

Gasoline- and diesel-range hydrocarbons were detected at concentrations exceeding their respective MTCA Method A cleanup levels in soil samples SB-11-21.5 and SB-11-24. The maximum detected concentrations of gasoline- and diesel-range hydrocarbons were 2,400 and 8,100 mg/kg, respectively. No other analytes were detected at or above MTCA Method A cleanup levels in the remaining soil samples collected during the investigation activities (SAIC, 2012).

3.7 GROUNDWATER MONITORING

Groundwater monitoring was performed on a quarterly to semi-annual basis from 1991 to present, though no monitoring was performed in the years 2000 and 2003. Since May 2012, all site wells have been monitored on a quarterly basis, with the exception of the 4th quarter 2013. Samples were analyzed for gasoline-range organics by NWTPH-G, diesel-range organics by NWTPH-D extended (with silica gel cleanup) and BTEX by USEPA 8021B.

4. CLEANUP LEVELS

The remedial investigations conducted at the former Union Oil bulk plant included sampling and laboratory analysis for petroleum-related constituents in the following media: soil and groundwater. As a screening tool to define the nature and extent of site impacts, chemical analytical results are compared to MTCA Method A cleanup levels for both soil and groundwater.

5. NATURE AND EXTENT OF PETROLEUM IMPACTS

5.1 SOIL

Remedial investigations occurred throughout the site with the completion of multiple soil borings and groundwater monitoring wells between 1989 and 2012. Remediation activities conducted at the site included the removal of impacted soil through excavations and the operation of AS/SVE remediation system. These excavations removed soil at depths ranging from surface to approximately 29 feet bgs. Locations of soil samples removed during the 2001 and 2005 excavations are noted in Table 1.

A limited volume of impacted soil remains beneath the site in the vicinity of monitoring well MW-5A at depths between approximately 21 and 27 feet bgs. The extent of soil impacts that exceed the MTCA Method A cleanup levels are shown on Figure 2. Soil analytical results are summarized in Table 1.

The small volume of residual petroleum impacted soil that remains at the bottom of the 2005 excavation was the likely source for the dissolved-phase hydrocarbons previously detected in monitoring wells MW-1A, MW-3A, MW-5A, and MW-8.

5.2 GROUNDWATER

Historically, diesel- and heavy oil-range hydrocarbon concentrations in groundwater exceeded the MTCA Method A cleanup levels in monitoring wells MW-1A, MW-3A, MW-5A, MW-7, and MW-8. Seasonal fluctuations in concentration levels are observed with concentrations generally lower during months with higher elevations and higher concentrations when groundwater elevations are lower. Dissolved-phase hydrocarbon concentrations across the entire

property have declined to below MTCA Method A cleanup levels since the completion of remedial activities.

Currently, residual petroleum impacts to groundwater remain in wells MW-3A and MW-5A. During the last 11 sampling events (May 2012 through February 2015), gasoline- and diesel-range hydrocarbons have been detected in well MW-3A and gasoline- and diesel-range hydrocarbons, ethylbenzene, and total xylenes have been detected in well MW-5A. Only diesel-range hydrocarbon concentrations have exceeded the MTCA Method A cleanup level.

At well MW-3A no exceedances were observed during all four quarters of 2014 and 1st quarter of 2015. At well MW-5A, diesel-range hydrocarbon concentrations exceeded the MTCA Method A cleanup level during the 1st quarters of 2013 and 2014, but were below the cleanup level during the last four quarters. Hydrographs, included in Appendix A, depict declining petroleum hydrocarbons concentrations in monitoring wells MW-3A and MW-5A.

No analytes have been detected in the remaining wells since the 1990s (wells MW-2 and MW-6/6A), 2005 (wells MW-4A and MW-7) and 2011 (wells MW-1A and MW-8). The dissolved-phase hydrocarbon plume is limited to the immediate area around wells MW-3A and MW-5A and is not migrating off the site.

Current and historical groundwater analytical results are summarized in Table 2.

5.3 TERRESTRIAL ECOLOGICAL EVALUATION

Exposure of terrestrial organism to impacted soil was evaluated by performing a Terrestrial Ecological Evaluation (TEE) for the site. A simplified TEE was completed and is included in Appendix B.

6. CONCLUSION

Dissolved-phase hydrocarbons across the entire site have declined. Hydrographs depict declining diesel-range hydrocarbon concentrations that have decreased to concentrations below MTCA Method A cleanup levels. Groundwater analytical data from the last four consecutive sampling events indicate that all analytes are at concentrations below their respective MTCA Method A cleanup levels in monitoring wells at the site.

Petroleum hydrocarbon impacts to soil have been remediated to the extent practicable. The remaining soil impacts are below the 15-foot point of compliance for direct contact and do not present ecological concerns or a risk to human health.

Residual petroleum hydrocarbons in soil and dissolved phase hydrocarbons in groundwater beneath the site no longer pose a risk to human health by dermal contact and inhalation and/or ingestion. Therefore, Leidos on behalf of CEMC requests a No Further Action determination for this site.

7. REFERENCES

- ENSR International (ENSR). 2005. Soil Boring Report, Former Unocal Bulk Plant #0082, Chelan, Washington. March 2005.
- ENSR. 2006. Soil Excavation Report, Former Unocal Bulk Plant #0082, Chelan, Washington. Prepared for Chevron Environmental Management Company. February 24, 2006.
- GeoEngineers, Inc. (GeoEngineers). 1990. Report of Geotechnical Services, Subsurface Contamination Study, Unocal Bulk Plant 0082, Chelan, Washington. Prepared for Unocal. March 14, 1990.
- GeoEngineers. 1991. Supplemental Report of Geotechnical Services, Subsurface Contamination Study, Unocal Bulk Plant 0082, Chelan, Washington. Prepared for Unocal. September 3, 1991.
- GeoEngineers. 1993. Progress Report No. 2, Quarterly Ground Water Monitoring and Supplemental Subsurface Explorations, Former Unocal Bulk Plant 0082, Chelan, Washington. Prepared for Unocal. May 14, 1993.
- GeoEngineers. 1996. Phase I Environmental Site Assessment, Former Unocal Bulk Plant 0082, Chelan, Washington. Prepared for Unocal ERS – Western Region. January 18, 1996.
- GeoEngineers. 1996. Report of Environmental Services, Supplemental Subsurface Contamination Study and In-situ Testing, Former Unocal Bulk Plant 0082, Chelan, Washington. Prepared for Unocal ERS – Western Region. January 18, 1996.
- Maul Foster & Alongi, Inc. (MFA). 2001a. Results of Soil Excavation Activities, Former Unocal Bulk Fuel Terminal #0082, Chelan, Washington. Prepared for Unocal Assessment Management Group. August 23, 2001.
- MFA. 2001b. Results of Subsurface Investigation Activities, Former Unocal Bulk Fuel Terminal #0082, Chelan, Washington. Prepared for Unocal Assessment Management Group. October 5, 2001.
- MFA. 2001c. Remediation System Installation Report, Former Unocal Bulk Fuel Terminal #0082, Chelan, Washington. Prepared for Unocal RRMC. December 20, 2001.
- MFA. 2002. Remediation System Performance Report, Former Unocal Bulk Fuel Terminal #0082, Chelan, Washington. Prepared for Washington State Department of Ecology. September 25, 2002.
- MFA. 2003. Results of Subsurface Soil Investigation Activities, Former Unocal Bulk Fuel Terminal #0082, Chelan, Washington.
- SAIC (Science Applications International Corporation). 2012. Supplemental Site Assessment Report, Former Unocal Bulk Plant Facility No. 306562. Prepared for Chevron Environmental Management Company. October 23, 2012.

Figures



- Legend**
- MW-5A** ● Monitoring Well Location
 - Property Line
 - UST
 - AST
 - ▨ 2001 Excavation



Former Unocal #0082/Chevron Facility No. 306562 1329 West Woodin Avenue Chelan, Washington		Figure 1 Site Map and Extent of the 2001 Excavation	
DATE:	06/05/2015	FILE NAME:	Site Plan.dwg

Source: Figure modified from drawing provided by ENSR, Dated: 11/09/06.



- Legend**
- MW-1A** ● Monitoring Well Location
 - SB-1 ▲ Soil Boring Location
 - Property Line
 - UST Underground Storage Tank
 - AST Aboveground Storage Tank
 - 2005 Excavation
 - Extent of Excavation Base (2005)
 - 039 ● 2005 ENSR Excavation Sample Locations
 - B-4 ▲ 2005 ENSP Soil Boring Locations
 - Approximate Extent of Petroleum Hydrocarbons in Soil Exceeding MTCA Method A Cleanup Levels

Former Unocal Bulk Plant No. 306562
 1329 West Woodin Avenue
 Chelan, Washington

FIGURE 2
 Extent of the 2005 Excavation and
 Extent of Petroleum Hydrocarbons in Soil

DATE: 6/5/2015

FILE NAME: 306562 Site Map 2012.dwg

Source: Figure modified from drawing provided by ENSR, Dated: 11/09/06.



Tables

TABLE 1
HISTORICAL SOIL ANALYTICAL RESULTS - TPH, BTEX and MTBE
FORMER UNOCAL BULK PLANT FACILITY NO. 306562
1329 West Woodin Avenue
Chelan, Washington
Concentrations reported in mg/kg

Sample ID	Date	Depth (ft)	Total TPH	TPH-DRO	TPH-HRO	TPH-GRO	Benzene	Toluene	Ethylbenzene	Total Xylenes	MTBE
MW-1	11/30/1989	15	4,600	NA	NA	NA	<0.025	0.046	0.22	2.6	NA
MW-1	11/30/1989	20	1,300	NA	NA	NA	<0.025	0.029	0.079	0.83	NA
MW-2	11/30/1989	15	6	NA	NA	NA	<0.025	<0.025	<0.025	<0.025	NA
MW-3	11/30/1989	15	19	NA	NA	NA	<0.025	<0.025	<0.025	<0.025	NA
TP-1 ⁸⁹	12/4/1989	1	14,000	NA	NA	NA	<0.13	1.1	<0.13	59	NA
TP-1 ⁸⁹	12/4/1989	11	1,900	NA	NA	NA	<0.025	<0.025	<0.025	1.8	NA
TP-2 ⁸⁹	12/4/1989	5	6,000	NA	NA	NA	<0.025	0.066	0.15	0.72	NA
TP-2 ⁸⁹	12/4/1989	11	590	NA	NA	NA	<0.05	<0.025	<0.025	<0.025	NA
TP-3 ⁸⁹	12/4/1989	0	69,000	NA	NA	NA	<0.025	<0.025	<0.025	<0.025	NA
TP-3 ⁸⁹	12/4/1989	3	160	NA	NA	NA	<0.025	<0.025	<0.025	<0.025	NA
WH-1	12/5/1989	0	150	NA	NA	NA	NA	NA	NA	NA	NA
MW-4	4/3/1991	20	35	<5	--	<5	0.033	0.052	0.033	0.072	NA
MW-5	4/4/1991	20	6,600	7,000	NA	1,200/4,000	1.4	2	4.3	14	NA
MW-5	4/4/1991	29.5	54	<5	--	<5	<0.025	<0.025	<0.025	<0.025	NA
MW-6	4/4/1991	21	11	<5	--	<5	<0.025	<0.025	<0.025	<0.025	NA
MW-7	11/14/1992	26	NA	<36	NA	<6	<0.032	0.049	<0.032	<0.032	NA
MW-7	11/14/1992	28.5	NA	NA	NA	NA	<0.032	0.04	<0.032	<0.032	NA
S-1	11/14/1992	1	NA	1,800	NA	15,000	<0.027	0.51	1.2	590	NA
TP-1 ⁹⁵	8/29/1995	14	NA	<10	<25	<1.0	<0.05	<0.05	<0.05	<0.1	NA
TP-2 ⁹⁵	8/29/1995	10	NA	15	NA	<1.0	<0.05	<0.05	<0.05	<0.1	NA
TP-2 ⁹⁵	8/29/1995	14	NA	<10	<25	<1.0	<0.05	<0.05	<0.05	<0.1	NA
TP-3 ⁹⁵	8/29/1995	12	NA	<10	<25	<1.0	<0.05	<0.05	<0.05	<0.1	NA
TP-4 ⁹⁵	8/29/1995	2	NA	50	73	<1.0	<0.05	<0.05	<0.05	<0.1	NA
TP-4 ⁹⁵	8/29/1995	6	NA	10,000	910	340	<0.08	<0.08	<0.08	0.52	NA
TP-4 ⁹⁵	8/29/1995	13.5	NA	200	50	3.6	<0.05	<0.05	<0.05	<0.1	NA
TP-5 ⁹⁵	8/29/1995	8	NA	41	40	<1.0	<0.05	<0.05	<0.05	<0.1	NA
TP-5 ⁹⁵	8/29/1995	13.5	NA	10,000	670	510	<0.08	<0.9	<0.08	8.9	NA
TP-6 ⁹⁵	8/29/1995	10	NA	13	27	<1.0	<0.05	<0.05	<0.05	<1.0	NA
TP-6 ⁹⁵	8/29/1995	14	NA	<10	28	<1.0	<0.05	<0.05	<0.05	<1.0	NA
TP-7 ⁹⁵	8/29/1995	6	NA	<10	<25	14	<0.05	<0.05	<0.05	<1.0	NA
TP-7 ⁹⁵	8/29/1995	14	NA	<10	<25	11	<0.05	<0.05	<0.05	<1.0	NA

TABLE 1
HISTORICAL SOIL ANALYTICAL RESULTS - TPH, BTEX and MTBE
FORMER UNOCAL BULK PLANT FACILITY NO. 306562
1329 West Woodin Avenue
Chelan, Washington
Concentrations reported in mg/kg

Sample ID	Date	Depth (ft)	Total TPH	TPH-DRO	TPH-HRO	TPH-GRO	Benzene	Toluene	Ethylbenzene	Total Xylenes	MTBE
TP-8 ⁹⁵	8/29/1995	10	NA	37	29	32	<0.05	<0.05	<0.05	<1.0	NA
TP-8 ⁹⁵	8/29/1995	12	NA	33	120	44	<0.05	<0.05	<0.05	<1.0	NA
TP-9 ⁹⁵	8/29/1995	10	NA	73	81	290	<0.08	<0.08	<0.08	1.4	NA
TP-9 ⁹⁵	8/29/1995	11	NA	130	57	54	<0.05	<0.05	<0.05	<1.0	NA
TP-10 ⁹⁵	8/29/1995	12	NA	<10	43	<1.0	<0.05	<0.05	<0.05	<1.0	NA
TP-11 ⁹⁵	8/30/1995	6	NA	80	230	<1.0	<0.05	<0.05	<0.05	<1.0	NA
TP-12 ⁹⁵	8/30/1995	12	NA	<10	28	<1.0	<0.05	<0.05	<0.05	<1.0	NA
TP-13 ⁹⁵	8/30/1995	8	NA	<10	27	<1.0	<0.05	<0.05	<0.05	<1.0	NA
TP-14 ⁹⁵	8/30/1995	9	NA	<10	<25	<1.0	<0.05	<0.05	<0.05	<1.0	NA
TP-15 ⁹⁵	8/30/1995	12	NA	<10	<25	<1.0	<0.05	<0.05	<0.05	<1.0	NA
EX1-SW1-7.5-0401	4/30/2001	7.5	NA	25.7	<25.0	NA	NA	NA	NA	NA	NA
EX1-SW2-7.5-0401	4/30/2001	7.5	NA	<10	<25.0	NA	NA	NA	NA	NA	NA
EX1-F-11-0501	5/1/2001	11	NA	<10.0	<25.0	NA	NA	NA	NA	NA	NA
EX2-SW1-7.5-0401	4/30/2001	7.5	NA	<10.0	<25.0	NA	NA	NA	NA	NA	NA
EX2-SW2-7.5-0401	4/30/2001	7.5	NA	1,660	330	NA	NA	NA	NA	NA	NA
EX2-SW3-2.0-0401	4/30/2001	2	NA	<10.0	<25.0	NA	NA	NA	NA	NA	NA
EX2-SW2B-0501	5/1/2001	7	NA	<10.0	<25.0	NA	NA	NA	NA	NA	NA
EX3-SW1-7.5-0401	4/30/2001	7.5	NA	325	<25.0	NA	NA	NA	NA	NA	NA
EX3-SW2-7.5-0401	4/30/2001	7.5	NA	<10.0	<25.0	NA	NA	NA	NA	NA	NA
EX3-SW3-1.0-0401	4/30/2001	1	NA	<10.0	<25.0	NA	NA	NA	NA	NA	NA
EX3-SW1B-0501	5/1/2001	7	NA	179	<25.0	NA	NA	NA	NA	NA	NA
EX4-SW-0501	5/1/2001	0.5	NA	92.3	129	NA	NA	NA	NA	NA	NA
EX4-F-0501	5/1/2001	1	NA	376	1010	NA	NA	NA	NA	NA	NA
EX4-F-0501	5/1/2001	3	NA	11.1	47.7	NA	NA	NA	NA	NA	NA
EX5-SW-0501	5/1/2001	3.5	NA	198	29.8	NA	NA	NA	NA	NA	NA
EX5-SW2-0501	5/1/2001	3.5	NA	<10.0	<25.0	NA	NA	NA	NA	NA	NA
EX5-F-0501	5/1/2001	3.5	NA	128	<25.0	NA	NA	NA	NA	NA	NA
TP11B-3-0501	5/1/2001	3	NA	<10.0	<25.0	NA	NA	NA	NA	NA	NA
TP11B-8-0501	5/1/2001	8	NA	<10.0	<25.0	NA	NA	NA	NA	NA	NA
AS1-12.0-0501	5/25/2001	11.5-12.5	NA	9,570	<1020	1,530	<1.0	1.07	6.93	112	NA
AS2-12.0-0501	5/25/2001	11.5-12.5	NA	<10.0	<25.0	<5.0	<0.05	<0.05	<0.05	<0.10	NA

TABLE 1
HISTORICAL SOIL ANALYTICAL RESULTS - TPH, BTEX and MTBE
FORMER UNOCAL BULK PLANT FACILITY NO. 306562
1329 West Woodin Avenue
Chelan, Washington
Concentrations reported in mg/kg

Sample ID	Date	Depth (ft)	Total TPH	TPH-DRO	TPH-HRO	TPH-GRO	Benzene	Toluene	Ethylbenzene	Total Xylenes	MTBE
AS3-12.0-0501	5/25/2001	11.5-12.5	NA	75	<25.0	<5.0	<0.05	<0.05	<0.05	<0.10	NA
GP-1	1/9/2003	13.5	NA	34.4	<25	<5.0	<0.03	<0.05	<0.05	<0.1	NA
GP-2	1/9/2003	6	NA	87.8	<25	<5.0	<0.03	<0.05	<0.05	<0.1	NA
GP-2	1/9/2003	13	NA	69	25.9	<5.0	<0.03	<0.05	<0.05	<0.1	NA
GP-3	1/9/2003	11	NA	15	<25	<5.0	<0.03	<0.05	<0.05	<0.1	NA
GP-4	1/9/2003	5	NA	<10	<25	<5.0	<0.03	<0.05	<0.05	<0.1	NA
GP-4	1/9/2003	11	NA	<10	<25	<5.0	<0.03	<0.05	<0.05	<0.1	NA
GP-5	1/13/2003	10	NA	46.6	<25	<5.0	<0.03	<0.05	<0.05	<0.1	NA
B-1(3.5-4)	2/1/2005	3.5-4	NA	<10.0	<25.0	<5.00	<0.03	<0.05	<0.05	<0.10	NA
B-1(8.5-9)	2/1/2005	8.5-9	NA	<10.0	<25.0	<5.00	<0.03	<0.05	<0.05	<0.1	NA
B-1(13.5-14)	2/1/2005	13.5-14	NA	<10.0	<25.0	<5.00	<0.03	<0.05	<0.05	<0.1	NA
B-1(18.5-20)	2/1/2005	18.5-20	NA	<10.0	<25.0	<3.91	<0.0235	<0.0391	<0.0391	<0.0782	NA
B-2(5-6.5)	2/1/2005	5-6.5	NA	35.3	28.5	8.19	<0.03	<0.05	<0.05	<0.10	NA
B-2(15-16.5)	2/1/2005	15-16.5	NA	11.3	<25.0	<7.12	<0.0427	<0.0712	<0.0712	<0.142	NA
B-2(20-21.5)	2/1/2005	20-21.5	NA	<10.0	<25.0	<5.00	<0.03	<0.05	<0.05	<0.10	NA
B-2(25-26.5)	2/1/2005	25-26.5	NA	<10.0	<25.0	<5.00	<0.03	<0.05	<0.05	<0.10	NA
B-3(15-16.5)	2/1/2005	15-16.5	NA	<10.0	<25.0	<5.00	<0.03	<0.05	<0.05	<0.10	NA
B-3(20-21.5)	2/1/2005	20-21.5	NA	<10.0	<25.0	<4.52	<0.0271	<0.0452	<0.0452	<0.905	NA
B-3(25-26.5)	2/1/2005	25-26.5	NA	<10.0	<25.0	<5.00	<0.03	<0.05	<0.05	<0.10	NA
B-4(15-16.5)	2/1/2005	15-16.5	NA	<10.0	<25.0	<4.48	<0.0269	<0.0448	<0.0448	<0.0897	NA
B-4(20-21.5)	2/1/2005	20-21.5	NA	<10.0	<25.0	<4.48	<0.0269	<0.0448	<0.0448	<0.0896	NA
B-4(25-26.5)	2/1/2005	25-26.5	NA	<10.0	<25.0	<4.13	<0.0248	<0.0413	<0.0413	<0.0826	NA
B-5(10-11.5)	2/1/2005	10-11.5	NA	3,080	60.1	281	<0.03	<0.05	<0.05	0.188	NA
B-5(15-16.5)	2/1/2005	15-16.5	NA	2,870	75.4	1,070	<0.0250	<0.0416	0.167	0.6	NA
B-5(20-21.5)	2/1/2005	20-21.5	NA	4,690	104	1,140	<0.0247	<0.0412	0.268	0.983	NA
B-5(25-26.5)	2/1/2005	25-26.5	NA	2,260	<125	373	<0.030	<0.050	0.0769	0.143	NA
B-6(15-16.5)	2/1/2005	15-16.5	NA	1,800	<25.0	242	<0.0267	<0.0444	<0.0444	<0.0889	NA
B-6(20-21.5)	2/1/2005	20-21.5	NA	7,370	58.6	378	<0.0245	<0.0408	<0.0408	<0.0816	NA
B-6(25-26.5)	2/1/2005	25-26.5	NA	86.7	<25.0	30.8	<0.0260	<0.0434	<0.0434	<0.0868	NA
B-7(15-16.5)	2/1/2005	15-16.5	NA	<10.0	<25.0	<5.00	<0.0300	<0.05	<0.05	<0.10	NA
B-7(20-21.5)	2/1/2005	20-21.5	NA	<10.0	<25.0	<5.00	<0.0300	<0.05	<0.05	<0.10	NA

TABLE 1
HISTORICAL SOIL ANALYTICAL RESULTS - TPH, BTEX and MTBE
FORMER UNOCAL BULK PLANT FACILITY NO. 306562
1329 West Woodin Avenue
Chelan, Washington
Concentrations reported in mg/kg

Sample ID	Date	Depth (ft)	Total TPH	TPH-DRO	TPH-HRO	TPH-GRO	Benzene	Toluene	Ethylbenzene	Total Xylenes	MTBE
B-7(25-26.5)	2/1/2005	25-26.5	NA	<10.0	<25.0	<4.15	<0.0249	<0.0415	<0.0415	<0.0828	NA
B-8(15-16.5)	2/1/2005	15-16.5	NA	<10.0	<25.0	<4.44	<0.0266	<0.0444	<0.0444	<0.0887	NA
B-8(20-21.5)	2/1/2005	20-21.5	NA	<10.0	<25.0	<5.00	<0.03	<0.05	<0.05	<0.10	NA
B-8(25-26.5)	2/1/2005	25-26.5	NA	<10.0	<25.0	<4.55	<0.0273	<0.0455	<0.0455	<0.0909	NA
022/27'	4/25/2005	27	NA	1,000	<40.0	<10.0	<0.02	<0.05	<0.05	<0.05	NA
023/27'	4/26/2005	27	NA	<20.0	<40.0	<10.0	<0.02	<0.05	<0.05	<0.05	NA
024/27'	4/25/2005	27	NA	<20.0	<40.0	<10.0	<0.02	<0.05	<0.05	<0.05	NA
025/18'	4/25/2005	18	NA	41	<40.0	<10.0	<0.02	<0.05	<0.05	<0.05	NA
026/25'	4/25/2005	25	NA	<20.0	<40.0	<10.0	<0.02	<0.05	<0.05	<0.05	NA
027/25'	4/25/2005	25	NA	<20.0	<40.0	<10.0	<0.02	<0.05	<0.05	<0.05	NA
031/24'	4/25/2005	24	NA	<20.0	<40.0	<10.0	<0.02	<0.05	<0.05	<0.05	NA
036/29'	4/25/2005	29	NA	<20.0	<40.0	<10.0	<0.02	<0.05	<0.05	<0.05	NA
032/16'	4/26/2005	16	NA	110	<40.0	<10.0	<0.02	<0.05	<0.05	<0.05	NA
037/25'	4/27/2005	25	NA	4,600	<40.0	<10.0	<0.02	<0.05	<0.05	0.03	NA
038/24'	4/28/2005	24	NA	<20.0	120	<10.0	<0.02	<0.05	<0.05	<0.05	NA
040/24'	4/28/2005	24	NA	88	<40.0	<10.0	<0.02	<0.05	<0.05	<0.05	NA
042/25'	4/28/2005	25	NA	<20.0	<40.0	<10.0	<0.02	<0.05	<0.05	<0.05	NA
043/25'	4/29/2005	25	NA	<20.0	<40.0	<10.0	<0.02	<0.05	<0.05	<0.05	NA
044/25'	4/29/2005	25	NA	<20.0	<40.0	<10.0	<0.02	<0.05	<0.05	<0.05	NA
045/25'	4/29/2005	25	NA	<20.0	<40.0	<10.0	<0.02	<0.05	<0.05	<0.05	NA
046/25'	4/29/2005	25	NA	<20.0	<40.0	<10.0	<0.02	<0.05	<0.05	<0.05	NA
EX0426NW1	4/26/2005	--	NA	12.4	<25.0	<4.32	<0.00127	<0.00127	<0.00339	<0.00847	NA
EX0426EW1	4/26/2005	--	NA	11.1	<25.0	<4.08	<0.00150	<0.00150	<0.00400	<0.0100	NA
EX0430SW1	4/30/2005	--	NA	<10.0	<25.0	<5.00	<0.00150	<0.00150	<0.00400	<0.0100	NA
EX0430WW1	4/30/2005	--	NA	18.7	<25.0	7.01	<0.00132	<0.00132	<0.00351	<0.00877	NA
MW-1A-26	5/5/2005	26	NA	<10.0	<25.0	<4.10	<0.0246	<0.0410	<0.0410	<0.0820	NA
MW-1A-31	5/5/2005	31	NA	<10.0	<25.0	<3.71	<0.00127	<0.00127	<0.00340	<0.00849	NA
MW-5A-26	5/5/2005	26	NA	1,360	<125	260	<0.0250	<0.0417	0.0959	0.675	NA
MW-5A-31	5/5/2005	31	NA	<10.0	<25.0	<3.96	<0.0238	<0.0396	<0.0396	<0.0792	NA
MW-3A-31	5/5/2005	31	NA	185	<25.0	18.9	<0.0219	<0.0365	<0.0365	<0.0731	NA
MW-4A-31	5/6/2005	31	NA	<10.0	<25.0	<3.92	<0.0235	<0.0392	<0.0392	<0.0784	NA

TABLE 1
HISTORICAL SOIL ANALYTICAL RESULTS - TPH, BTEX and MTBE
FORMER UNOCAL BULK PLANT FACILITY NO. 306562
1329 West Woodin Avenue
Chelan, Washington
Concentrations reported in mg/kg

Sample ID	Date	Depth (ft)	Total TPH	TPH-DRO	TPH-HRO	TPH-GRO	Benzene	Toluene	Ethylbenzene	Total Xylenes	MTBE
SB-1	03/19/12	23	NA	560	<53	73	<0.0005	<0.001	<0.001	<0.001	<0.0005
	03/19/12	25	NA	<3.2	<11	<1.1	<0.0005	<0.001	<0.001	<0.001	--
	03/19/12	28	NA	<3.5	<12	<1.2	<0.0005	<0.001	<0.001	<0.001	--
	03/19/12	33	NA	<3.6	<12	<1.3	<0.0005	<0.001	<0.001	<0.001	--
SB-2	03/19/12	25	NA	6.2	<11	<1.1	<0.0005	<0.001	<0.001	<0.001	--
	03/19/12	28	NA	<3.6	<12	<1.3	<0.0006	<0.001	<0.001	<0.001	--
	03/19/12	33	NA	<4.1	<14	<1.7	<0.0007	<0.001	<0.001	<0.001	--
SB-3	03/19/12	28	NA	<3.6	<12	<1.6	<0.0007	<0.001	<0.001	<0.001	--
	03/19/12	33	NA	<3.4	<11	<1.1	<0.0005	<0.001	<0.001	<0.001	--
SB-4	03/20/12	12.5	NA	<3.2	<11	<1.0	<0.0005	<0.001	<0.001	<0.001	--
	03/20/12	35	NA	<3.3	<11	<1.0	<0.0005	<0.001	<0.001	<0.001	--
SB-5	03/20/12	4	NA	3.2	<11	<1.0	<0.0005	<0.001	<0.001	<0.001	--
	03/20/12	26	NA	<3.6	<12	<1.3	<0.0005	<0.001	<0.001	<0.001	--
	03/20/12	36	NA	<3.7	<12	<1.5	<0.0006	<0.001	<0.001	<0.001	--
SB-6	03/20/12	4	NA	<3.2	<11	<1.1	<0.0005	<0.001	<0.001	<0.001	--
	03/21/12	25	NA	<3.4	<11	<1.2	<0.0006	<0.001	<0.001	<0.001	--
	03/21/12	37	NA	<3.6	<12	<1.3	<0.0006	0.002	0.016	0.095	--
SB-7	03/21/12	6	NA	<3.2	<11	<1	<0.0005	<0.0009	<0.0009	<0.0009	--
	03/21/12	28	NA	<3.3	<11	<1.2	<0.0006	<0.001	<0.001	<0.001	--
	03/21/12	35	NA	<3.4	<11	<1.2	<0.0005	<0.001	<0.001	<0.001	--
SB-8	03/21/12	6	NA	<3.1	<10	<1.1	<0.0005	<0.001	<0.001	<0.001	--
	03/21/12	26	NA	<3.2	<11	<1.1	<0.0005	<0.001	<0.001	<0.001	--
	03/21/12	31	NA	3.9	<11	<0.9	0.0008	<0.0009	<0.0009	<0.0009	--
SB-9	03/21/12	2	NA	<3.3	<11	<1.1	<0.0007	0.003	<0.001	<0.001	--
	03/21/12	27.5	NA	<3.5	<12	<1.4	<0.0006	<0.001	<0.001	<0.001	--
	03/21/12	35.5	NA	<3.5	<12	<1.3	<0.0006	<0.001	<0.001	<0.001	--
SB-10	03/22/12	23	NA	3.2	<10	<1.1	<0.0005	<0.001	<0.001	<0.001	--
	03/22/12	28	NA	<3.3	<11	<1.1	<0.0005	<0.001	<0.001	<0.001	--
SB-11	03/22/12	21.5	NA	8,100	<1,100	2,400	<0.029	<0.058	0.060	0.077	--
	03/22/12	24	NA	6,000	<1,100	2,300	<0.056	<0.11	<0.11	0.12	<0.056
	03/22/12	28.5	NA	7.7	<12	<1.4	<0.0006	<0.001	<0.001	<0.001	--
	03/22/12	31	NA	100	<13	3.5	<0.0006	<0.001	<0.001	<0.001	--
MW-6A	03/22/12	31	NA	<3.5	<12	<1.2	<0.0005	<0.001	<0.001	<0.001	--

TABLE 1
HISTORICAL SOIL ANALYTICAL RESULTS - TPH, BTEX and MTBE
FORMER UNOCAL BULK PLANT FACILITY NO. 306562
1329 West Woodin Avenue
Chelan, Washington
Concentrations reported in mg/kg

Sample ID	Date	Depth (ft)	Total TPH	TPH-DRO	TPH-HRO	TPH-GRO	Benzene	Toluene	Ethylbenzene	Total Xylenes	MTBE
MW-9	03/20/12	26	NA	<3.2	<11	<1.1	<0.0005	<0.001	<0.001	<0.001	--
	03/20/12	28	NA	<3.4	<11	<1.1	<0.0005	<0.001	<0.001	<0.001	--
	03/20/12	33.5	NA	<3.8	<13	<1.4	<0.0006	<0.001	<0.001	<0.001	--
MW-10	03/20/12	24	NA	<3.1	<10	<1.0	<0.0005	<0.001	<0.001	<0.001	--
	03/20/12	28	NA	<3.6	<12	<1.3	<0.0005	<0.001	<0.001	<0.001	--
	03/20/12	33	NA	<3.4	<11	<1.1	<0.0005	<0.001	<0.001	<0.001	--
MTCA Method A Cleanup Levels:				2,000	2,000	30/100 ¹	0.03	7	6	9	

EXPLANATIONS:

Analytical results in bold font indicate concentrations exceed MTCA Method A cleanup levels.

Laboratory analytical methods for historical data may not be consistent with current analytical methods. When necessary, consult original reports to verify methods used.

BTEX = Benzene, toluene, ethylbenzene, and total xylenes

ft = Feet

mg/kg = Milligrams per kilogram

MTCA = Model Toxics Control Act

TPH = Total petroleum hydrocarbons

TPH-DRO = TPH as diesel-range organics

TPH-GRO = TPH as gasoline-range organics

TPH-HRO = TPH as heavy oil-range organics

USEPA = United States Environmental Protection Agency

< = Analyte not detected at or above the laboratory reporting limit

BTEX and MTBE analyzed by USEPA 8260B.

TPH-GRO analyzed by Northwest Method NWTPH-Gx.

TPH-DRO and TPH-HRO analyzed by Northwest Method NWTPH-Dx.

¹ = Cleanup level is 30 mg/kg when benzene is present onsite and 100 mg/kg when not present. Benzene is not present onsite.

Soil removed during remedial excavations in 2001 and 2005.

TABLE 2
GROUNDWATER MONITORING DATA AND ANALYTICAL RESULTS ¹
FORMER UNOCAL BULK PLANT NO. 306562
1329 West Woodin Avenue
Chelan, Washington
Concentrations reported in µg/L

Well ID/ Date	TOC ² (ft.)	DTW (ft. BTOC)	SPHT (ft.)	GWE ³ (ft.)	TPH-DRO ⁷	TPH-HRO	TPH-GRO	Benzene	Toluene	Ethyl- benzene	Total Xylenes	Lead
MW-1												
12/4/89	--	--	--	--	--	3,800	--	270	150	94	700	--
4/9/91	--	--	--	--	<1,000	--	2,800	280	50	41	270	10
8/27/91	--	--	--	--	15,000	5,300	3,000	84	8.3	6.8	57	12
11/23/91	--	--	--	--	19,000	14,000	12,000	250	71	43	350	59
2/20/92	--	DRY	--	--	--	--	--	--	--	--	--	--
5/21/92	--	--	--	--	9,900	25,000	1,200	1.2	<0.5	0.57	4.3	19
8/19/92	--	--	--	--	16,000	--	570	28	5.0	4.7	24	17
11/12/92	--	--	--	--	12,000	--	1,600	75	53	19	150	--
2/25/93	--	DRY	--	--	--	--	--	--	--	--	--	--
8/24/93	--	--	--	--	18,000	<3,800	240	15	1.6	2.2	9.1	--
7/8/94	--	--	--	--	3,200	930	<50	0.88	<0.5	<0.5	<1	6.4
1/4/95	--	--	--	--	2,000	1,900	73	27	0.83	2.4	4.9	7.1
6/29/95	--	--	--	--	5,600	2,000	<50	0.69	<0.5	<0.5	<1	5.5
12/29/95	--	--	--	--	21,000	6,800	200	28	4.4	1.2	33	6.2
6/19/96	--	--	--	--	15,500	1,020	411	13.7	<0.5	<0.5	2.29	4.1
12/13/96	--	--	--	--	1,910	<750	1,290	55	9.2	15.8	112	<10
7/1/97	--	--	--	--	1,200	<750	94.8	5.4	<0.5	<0.5	1	2.9
12/30/97	--	--	--	--	4,800	<750	10,490	33.6	<25	<25	124	7.4
6/12/98	--	--	--	--	<250	<750	<50	1.29	<0.5	<0.5	<1	4.6
12/7/98	--	--	--	--	792	<750	841	34.4	7.21	15.8	115	4.7
6/21/99	--	--	--	--	<250	<750	<50	1.31	0.1	<0.5	1.09	2.6
5/25/01	--	--	--	--	889	<500	117	0.67	<0.5	<0.5	1.24	--
8/9/01	--	--	--	--	2,370	<500	114	1.89	<0.5	1.67	7.70	--
11/13/01	--	--	--	--	435	<500	616	<0.5	<0.5	<0.5	<1	--
1/30/02	--	--	--	--	1,820	<500	168	<0.5	<0.5	<0.5	<1	--
1/23/04	1,112.38	21.24	--	1,091.14	952	<500	54.3	<0.5	<0.5	<0.5	<1	--
4/12/04	1,112.38	25.83	--	1,086.55	756	<500	298	<0.5	<0.5	<0.5	<1	--
4/30/05	Decommissioned											

TABLE 2
GROUNDWATER MONITORING DATA AND ANALYTICAL RESULTS ¹
FORMER UNOCAL BULK PLANT NO. 306562
1329 West Woodin Avenue
Chelan, Washington
Concentrations reported in µg/L

Well ID/ Date	TOC ² (ft.)	DTW (ft. BTOC)	SPHT (ft.)	GWE ³ (ft.)	TPH-DRO ⁷	TPH-HRO	TPH-GRO	Benzene	Toluene	Ethyl- benzene	Total Xylenes	Lead
MW-1A												
5/25/05	1,112.09	14.60	--	1,097.49	13,700	<2,500	79.6	<0.5	<0.5	<0.5	<1	--
7/6/05	1,115.76	14.20	--	1,101.56	870	<500	<50	<0.5	<0.5	<0.5	<1	--
8/23/05 ⁴	1,115.76	--	--	--	1,980	<500	<50	<0.5	<0.5	<0.5	<1	--
8/30/05	1,115.76	--	--	--	16,900	<500	69.2	<0.5	<0.5	<0.5	<1	--
11/16/05	1,115.76	19.28	--	1,096.48	<245	<490	<50	<0.5	<0.5	<0.5	<1	--
4/5/06	1,115.76	DRY	--	--	--	--	--	--	--	--	--	--
7/25/06	1,115.76	14.07	--	1,101.69	<250	<500	<100	<0.5	<2	<1	<1.5	--
3/22/07	1,115.76	23.87	--	1,091.89	6,900	2,500⁵	<48	<0.5	<0.5	<0.5	<1.5	--
8/9/07	1,115.76	14.18	--	1,101.58	5,700	1,500	<50	<0.5	<0.5	<0.5	<1.5	--
11/13/07	1,115.76	19.92	--	1,095.84	7,000	970⁵	<50	<0.5	<0.5	<0.5	<1.5	--
3/8/08	1,115.76	DRY	--	--	--	--	--	--	--	--	--	--
5/23/08	1,115.76	26.18	--	1,089.58	2,400	540⁵	<50	<0.5	<0.5	<0.5	<1.5	--
8/22/08	1,115.76	14.24	--	1,101.52	3,100	320 ⁵	<50	<0.5	<0.5	<0.5	<1.5	--
2/11/09	1,115.76	24.58	--	1,091.18	3,100	1,200⁵	<50	<0.5	<0.5	<0.5	<1.5	--
4/12/10	1,115.76	23.80	--	1,091.96	1,400	<700	<50	<0.5	<0.5	<0.5	<1.5	--
10/14/10	1,115.76	17.02	--	1,098.74	2,400	1,500	<50	<0.5	<0.5	<0.5	<1.5	--
4/12/11	1,115.76	28.81	--	1,086.95	NOT SAMPLED DUE TO INSUFFICIENT WATER			--	--	--	--	--
10/11/11	1,115.76	17.1	--	1,098.66	<30	<70	<50	<0.5	<0.5	<0.5	<1.5	--
5/23/12	1,115.76	22.4	--	1,093.36	<30	<69	<50	<0.5	<0.5	<0.5	<1.5	--
8/23/12	1,115.76	14.30	--	1,101.46	<29	<69	<50	<0.5	<0.5	<0.5	<1.5	--
11/29/12	1,115.76	19.52	--	1,096.24	<29	<69	<50	<0.5	<0.5	<0.5	<1.5	--
3/13/13	1,115.76	27.28	--	1,088.48	<150	<350	<50	<0.5	<0.5	<0.5	<1.5	--
6/11/13	1,115.76	17.38	--	1,098.38	<30	<70	<50	<0.5	<0.5	<0.5	<1.5	--
9/17/13	1,115.76	14.95	--	1,100.81	<30	<70	<50	<0.5	<0.5	<0.5	<1.5	--
3/19/14	1,115.76	28.77	--	1,086.99	NOT SAMPLED DUE TO INSUFFICIENT WATER			--	--	--	--	--
5/9/14	1,115.76	24.54	--	1,091.22	<30	<70	<50	<0.5	<0.5	<0.5	<1.5	--
9/6/14	1,115.76	14.64	--	1,101.12	<28	<66	<50	<0.5	<0.5	<0.5	<1.5	--
11/14/14	1,115.76	19.57	--	1,096.19	<29	<68	<50	<0.5	<0.5	<0.5	<1.5	--
2/10/15	1,115.76	21.58	--	1,094.18	<29	<68	<50	<0.5	<0.5	<0.5	<1.5	--

TABLE 2
GROUNDWATER MONITORING DATA AND ANALYTICAL RESULTS ¹
FORMER UNOCAL BULK PLANT NO. 306562
1329 West Woodin Avenue
Chelan, Washington
Concentrations reported in µg/L

Well ID/ Date	TOC ² (ft.)	DTW (ft. BTOC)	SPHT (ft.)	GWE ³ (ft.)	TPH-DRO ⁷	TPH-HRO	TPH-GRO	Benzene	Toluene	Ethyl- benzene	Total Xylenes	Lead
MW-2												
12/4/89	--	--	--	--	--	230	--	<0.5	<0.5	<0.5	<0.5	--
4/9/91	--	--	--	--	<1,000	--	<1,000	<0.5	<0.5	<0.5	<0.5	9
8/27/91	--	--	--	--	<1,000	<1,000	<1,000	<0.5	<0.5	<0.5	<0.5	<2
11/23/91	--	--	--	--	<1,000	<1,000	<1,000	<0.5	<0.5	<0.5	<0.5	<3
2/20/92	--	DRY	--	--	--	--	--	--	--	--	--	--
5/21/92	--	--	--	--	<500	<1,000	<50	<0.5	<0.5	<0.5	<0.5	3.3
8/19/92	--	--	--	--	--	--	--	--	--	--	--	--
11/12/92	--	--	--	--	1,000	--	<100	<0.5	<0.5	<0.5	<0.5	--
2/25/93	--	DRY	--	--	--	--	--	--	--	--	--	--
8/24/93	--	--	--	--	<250	<750	<100	<0.5	<0.5	<0.5	<0.5	--
7/8/94	--	--	--	--	<250	<750	<50	<0.5	<0.5	<0.5	<1	--
1/4/95	--	--	--	--	340	720	<50	<0.5	<0.5	<0.5	<1	--
6/29/95	--	--	--	--	<250	<750	<50	<0.5	<0.5	<0.5	<1	--
12/29/95	--	--	--	--	2,000	1,400	<50	<0.5	<0.5	<0.5	<1	--
6/19/96	--	--	--	--	518	<750	<50	<0.5	<0.5	<0.5	<1	--
12/13/96	--	--	--	--	<250	<750	<50	<0.5	<0.5	<0.5	<1	--
7/1/97	--	--	--	--	<250	<750	<50	<0.5	<0.5	<0.5	<1	--
12/30/97	--	--	--	--	287	<750	--	--	--	--	--	--
6/12/98	--	--	--	--	<250	<750	<50	--	--	--	--	--
12/7/98	--	--	--	--	<250	<750	--	--	--	--	--	--
6/21/99	--	--	--	--	<250	<750	--	--	--	--	--	--
5/25/01	--	--	--	--	<250	<500	<50	<0.5	<0.5	<0.5	<1	--
8/9/01	--	--	--	--	<301	<602	<50	<0.5	<0.5	<0.5	<1	--
11/13/01	--	--	--	--	<250	<500	<50	<0.5	<0.5	<0.5	<1	--
1/30/02	--	--	--	--	<250	<500	<50	<0.5	<0.5	<0.5	<1	--
1/23/04	1,115.41	20.62	--	1,094.79	<250	<500	<50	<0.5	<0.5	<0.5	<1	--
4/12/04	1,115.41	DRY	--	--	--	--	--	--	--	--	--	--
5/25/05	1,115.41	14.20	--	1,101.21	<250	<500	<50	<0.5	<0.5	<0.5	<1	--
8/30/05	1,115.41	--	--	--	<250	<500	<50	<0.5	<0.5	<0.5	<1	--
11/16/05	1,115.41	18.92	--	1,096.49	<248	<495	<50	<0.5	<0.5	<0.5	<1	--

TABLE 2
GROUNDWATER MONITORING DATA AND ANALYTICAL RESULTS ¹
FORMER UNOCAL BULK PLANT NO. 306562
1329 West Woodin Avenue
Chelan, Washington
Concentrations reported in µg/L

Well ID/ Date	TOC ² (ft.)	DTW (ft. BTOC)	SPHT (ft.)	GWE ³ (ft.)	TPH-DRO ⁷	TPH-HRO	TPH-GRO	Benzene	Toluene	Ethyl- benzene	Total Xylenes	Lead
MW-2 (cont)												
4/5/06	1,115.41	DRY	--	--	--	--	--	--	--	--	--	--
7/25/06	1,115.41	13.69	--	1,101.72	<250	<500	<100	<0.5	<2	<1	<1.5	--
5/23/12	1,115.41	22.15	--	1,093.26	--	--	--	--	--	--	--	--
8/23/12	1,115.41	13.94	--	1,101.47	--	--	--	--	--	--	--	--
11/29/12	1,115.41	19.17	--	1,096.24	--	--	--	--	--	--	--	--
3/13/13	1,115.41	DRY	--	--	--	--	--	--	--	--	--	--
6/10/13	1,115.41	17.03	--	1,098.38	--	--	--	--	--	--	--	--
9/17/13	1,115.41	14.61	--	1,100.80	--	--	--	--	--	--	--	--
3/19/14	1,115.41	DRY	--	--	--	--	--	--	--	--	--	--
5/8/14	1,115.41	25.39	--	1,090.02	NOT SAMPLED DUE TO INSUFFICIENT WATER			--	--	--	--	--
9/6/14	1,115.41	14.29	--	1,101.12	--	--	--	--	--	--	--	--
11/14/14	1,115.41	19.21	--	1,096.20	--	--	--	--	--	--	--	--
2/10/15	1,115.41	21.27	--	1,094.14	--	--	--	--	--	--	--	--
MW-3												
12/4/89	--	--	--	--	--	9,300	--	<0.5	<0.5	<0.5	<0.5	--
4/9/91	--	--	--	--	<1,000	--	<1,000	3.9	<0.5	<0.5	1.6	12
8/27/91	--	--	--	--	<1,000	<1,000	<1,000	<0.5	<0.5	<0.5	<0.5	<2
11/23/91	--	--	--	--	<1,000	<1,000	<1,000	1.2	<0.5	<0.5	<0.5	<3
2/20/92	--	--	--	--	12,000	6,600	<1,000	<0.5	<0.5	<0.5	<0.5	<3
5/21/92	--	--	--	--	3,500	9,000	100	1.0	<0.5	<0.5	<1	2.9
8/19/92	--	--	--	--	1,800	--	<50	4.4	<0.5	<0.5	<0.5	<2
11/12/92	--	--	--	--	1,800	--	<100	<0.5	<0.5	<0.5	<0.5	--
2/25/93	--	--	--	--	2,600	--	<100	1.4	<0.5	<0.5	<0.5	--
8/24/93	--	--	--	--	1,000	<750	<100	1.6	<0.5	<0.5	<1	--
7/8/94	--	--	--	--	2,000	1,200	<50	0.95	<0.5	<0.5	<1	--
1/4/95	--	--	--	--	11,000	2,400	59.0	2.8	<0.5	<0.5	<1	--
6/29/95	--	--	--	--	2,300	1,700	<50	<0.5	<0.5	<0.5	<1	--
12/29/95	--	--	--	--	5,100	2,900	<50	<0.5	<0.5	<0.5	<1	--
6/19/96	--	--	--	--	4,790	1,940	<50	<0.5	<0.5	<0.5	<1	--
12/13/96	--	--	--	--	<250	<750	<50	<0.5	<0.5	<0.5	<1	--

TABLE 2
GROUNDWATER MONITORING DATA AND ANALYTICAL RESULTS ¹
FORMER UNOCAL BULK PLANT NO. 306562
1329 West Woodin Avenue
Chelan, Washington
Concentrations reported in µg/L

Well ID/ Date	TOC ² (ft.)	DTW (ft. BTOC)	SPHT (ft.)	GWE ³ (ft.)	TPH-DRO ⁷	TPH-HRO	TPH-GRO	Benzene	Toluene	Ethyl- benzene	Total Xylenes	Lead
MW-3 (cont)												
7/1/97	--	--	--	--	<250	<750	<50	<0.5	<0.5	<0.5	<1	--
12/30/97	--	--	--	--	280	<750	--	--	--	<0.5	--	--
6/12/98	--	--	--	--	<250	<750	--	--	--	--	--	--
12/7/98	--	--	--	--	<250	<750	--	--	--	--	--	--
6/21/99	--	--	--	--	<250	<750	--	--	--	--	--	--
5/25/01	--	--	--	--	<250	<500	<50	<0.5	<0.5	<0.5	<1	--
8/9/01	--	--	--	--	<250	<500	<50	<0.5	<0.5	<0.5	<1	--
11/13/01	--	--	--	--	<250	<500	<50	<0.5	<0.5	<0.5	<1	--
1/30/02	--	--	--	--	379	<500	55	1.35	<0.5	<0.5	<1	--
1/23/04	1,112.15	20.99	--	1,091.16	<250	<500	<50	<0.5	<0.5	<0.5	<1	--
4/12/04	1,112.15	25.57	--	1,086.58	<250	<500	70.8	<0.5	<0.5	<0.5	<1	--
4/30/05	Decommissioned											
MW-3A												
5/25/05	1,115.15	13.98	--	1,101.17	NOT SAMPLED DUE TO TURBIDITY							
7/6/05	1,115.15	13.57	--	1,101.58	473	<500	150	<0.5	<0.5	<0.5	<1	--
8/23/05 ⁴	1,115.15	--	--	--	620	<500	256	<0.5	0.772	<0.5	<1	--
8/30/05	1,115.15	--	--	--	566	<500	299	<0.5	<0.5	0.741	<1	--
11/16/05	1,115.15	18.66	--	1,096.49	319	<485	166	<0.5	<0.5	0.741	<1	--
4/5/06	1,115.15	DRY	--	--	--	--	--	--	--	--	--	--
7/25/06	1,115.15	13.43	--	1,101.72	2,290	<500	153	<0.5	<2	<1	<1.5	--
3/22/07	1,115.15	23.30	--	1,091.85	14,000	3,100⁵	93 ⁵	<0.5	<0.5	<0.5	<1.5	--
8/9/07	1,115.15	13.55	--	1,101.60	9,300	3,400⁵	52 ⁵	<0.5	<0.5	<0.5	1.7 ⁵	--
11/13/07	1,115.15	19.30	--	1,095.85	7,400	2,000⁵	<50	<0.5	<0.5	<0.5	<1.5	--
3/8/08	1,115.15	29.38	--	1,085.77	NOT SAMPLED DUE TO INSUFFICIENT WATER							
5/23/08	1,115.15	25.78	--	1,089.37	11,000	1,800⁵	130 ⁵	<0.5	<0.5	<0.5	<1.5	--
8/22/08	1,115.15	13.62	--	1,101.53	7,700	<1,000	150 ⁵	<0.5	<0.5	<0.5	<1.5	--
2/11/09	1,115.15	23.92	--	1,091.23	7,800	3,100⁵	66 ⁵	<0.5	<0.5	<0.5	<1.5	--
4/12/10	1,115.15	23.18	--	1,091.97	3,900	1,300	<50	<0.5	<0.5	<0.5	<1.5	--
10/14/10	1,115.15	16.41	--	1,098.74	3,900	1,600	<50	<0.5	<0.5	<0.5	<1.5	--
4/12/11	1,115.15	28.45	--	1,086.70	--	--	<50	<0.5	<0.5	<0.5	<1.5	--

TABLE 2
GROUNDWATER MONITORING DATA AND ANALYTICAL RESULTS ¹
FORMER UNOCAL BULK PLANT NO. 306562
1329 West Woodin Avenue
Chelan, Washington
Concentrations reported in µg/L

Well ID/ Date	TOC ² (ft.)	DTW (ft. BTOC)	SPHT (ft.)	GWE ³ (ft.)	TPH-DRO ⁷	TPH-HRO	TPH-GRO	Benzene	Toluene	Ethyl- benzene	Total Xylenes	Lead
MW-3A (cont)												
10/11/11	1,115.15	16.45	--	1,098.70	72	<70	<50	<0.5	<0.5	<0.5	<1.5	--
5/23/12	1,115.15	21.90	--	1,093.25	<30	<69	<50	<0.5	<0.5	<0.5	<1.5	--
8/23/12	1,115.15	13.70	--	1,101.45	1,500	<69	260	<0.5	<0.5	<0.5	<1.5	--
11/29/12	1,115.15	18.92	--	1,096.23	84	<70	<50	<0.5	<0.5	<0.5	<1.5	--
3/13/13	1,115.15	26.65	--	1,088.50	370	<71	<50	<0.5	<0.5	<0.5	<1.5	--
6/11/13	1,115.15	16.74	--	1,098.41	1,300	<76	230	<0.5	<0.5	<0.5	<1.5	--
9/17/13	1,115.15	14.73	--	1,100.42	510	<72	120	<0.5	<0.5	<0.5	<1.5	--
3/19/14	1,115.15	27.34	--	1,087.81	200	<72	<50	<0.5	<0.5	<0.5	<1.5	--
5/9/14	1,115.15	24.04	--	1,091.11	120	<70	<50	<0.5	<0.5	<0.5	<1.5	--
9/6/14	1,115.15	14.40	--	1,100.75	<28	<66	<50	<0.5	<0.5	<0.5	<1.5	--
11/14/14	1,115.15	18.94	--	1,096.21	<30	<71	<50	<0.5	<0.5	<0.5	<1.5	--
2/10/15	1,115.15	21.27	--	1,093.88	370	<68	<50	<0.5	<0.5	<0.5	<1.6	--
MW-4												
4/9/91	--	--	--	--	<1,000	--	<1,000	<0.5	<0.5	<0.5	<0.5	45
8/27/91	--	--	--	--	<1,000	<1,000	<1,000	<0.5	<0.5	<0.5	<0.5	15
11/23/91	--	--	--	--	<1,000	<1,000	<1,000	<0.5	<0.5	<0.5	<0.5	15
2/20/92	--	--	--	--	--	--	--	--	--	--	--	--
5/21/92	--	--	--	--	600	2,100	<50	<0.5	<0.5	<0.5	<0.5	41
8/19/92	--	--	--	--	--	--	--	--	--	--	--	--
11/12/92	--	--	--	--	--	--	--	--	--	--	--	--
2/25/93	--	--	--	--	--	--	--	--	--	--	--	--
8/24/93	--	--	--	--	280	<750	<100	<0.5	<0.5	<0.5	<0.5	--
7/8/94	--	--	--	--	630	910	<50	<0.5	<0.5	<0.5	<1	2.9
1/4/95	--	--	--	--	750	880	<50	<0.5	<0.5	<0.5	<1	6.4
6/29/95	--	--	--	--	490	1,500	<50	<0.5	<0.5	<0.5	<1	2.2
12/29/95	--	--	--	--	1,700	1,400	<50	<0.5	<0.5	<0.5	<1	6.3
6/19/96	--	--	--	--	2,530	1,840	<50	<0.5	<0.5	<0.5	<1	5.7
12/13/96	--	--	--	--	<250	<750	<50	<0.5	<0.5	<0.5	<1	<10
7/1/97	--	--	--	--	<250	<750	<50	<0.5	<0.5	<0.5	<1	4.2
12/30/97	--	--	--	--	<250	<750	--	--	--	--	--	3.2

TABLE 2
GROUNDWATER MONITORING DATA AND ANALYTICAL RESULTS ¹
FORMER UNOCAL BULK PLANT NO. 306562
1329 West Woodin Avenue
Chelan, Washington
Concentrations reported in µg/L

Well ID/ Date	TOC ² (ft.)	DTW (ft. BTOC)	SPHT (ft.)	GWE ³ (ft.)	TPH-DRO ⁷	TPH-HRO	TPH-GRO	Benzene	Toluene	Ethyl- benzene	Total Xylenes	Lead
MW-4 (cont)												
6/12/98	--	--	--	--	<250	<750	--	--	--	--	--	2.4
12/7/98	--	--	--	--	<250	<750	--	--	--	--	--	2.4
6/21/99	--	--	--	--	<250	<750	--	--	--	--	--	--
5/25/01	--	--	--	--	<250	<500	<50	<0.5	<0.5	<0.5	<1	--
8/9/01	--	--	--	--	<250	<500	<50	<0.5	<0.5	<0.5	<1	--
11/13/01	--	--	--	--	<250	<500	<50	<0.5	<0.5	<0.5	<1	--
1/30/02	--	--	--	--	<250	<500	<50	<0.5	<0.5	<0.5	<1	--
1/23/04	1,112.35	21.22	--	1,091.13	<250	<500	<50	<0.5	<0.5	<0.5	<1	--
4/12/04	1,112.35	25.82	--	1,086.53	<250	<500	<50	<0.5	<0.5	<0.5	<1	--
4/30/05	Decommissioned											
MW-4A												
5/25/05	1,115.87	14.68	--	1,101.19	<250	<500	<50	<0.5	<0.5	<0.5	<1	--
7/6/05	1,115.87	14.30	--	1,101.57	--	--	--	--	--	--	--	--
8/23/05 ⁴	1,115.87	--	--	--	<250	<500	<50	<0.5	<0.5	<0.5	<1	--
8/30/05	1,115.87	--	--	--	<250	<500	<50	<0.5	<0.5	<0.5	<1	--
11/16/05	1,115.87	19.37	--	1,096.50	<243	<485	<50	<0.5	<0.5	<0.5	<1	--
4/5/06	1,115.87	DRY	--	--	--	--	--	--	--	--	--	--
7/25/06	1,115.87	14.17	--	1,101.70	<250	<500	<100	<0.5	<2	<1	<1.5	--
5/23/12	1,115.87	22.55	--	1,093.32	--	--	--	--	--	--	--	--
8/23/12	1,115.87	14.40	--	1,101.47	--	--	--	--	--	--	--	--
11/29/12	1,115.87	19.64	--	1,096.23	--	--	--	--	--	--	--	--
3/13/13	1,115.87	27.31	--	1,088.56	--	--	--	--	--	--	--	--
6/10/13	1,115.87	17.51	--	1,098.36	--	--	--	--	--	--	--	--
9/17/13	1,115.87	15.06	--	1,100.81	--	--	--	--	--	--	--	--
3/19/14	1,115.87	29.47	--	1,086.40	--	--	--	--	--	--	--	--
5/9/14	1,115.87	24.46	--	1,091.41	--	--	--	--	--	--	--	--
9/6/14	1,115.87	14.75	--	1,101.12	--	--	--	--	--	--	--	--
11/14/14	1,115.87	19.66	--	1,096.21	--	--	--	--	--	--	--	--
2/10/15	1,115.87	21.70	--	1,094.17	--	--	--	--	--	--	--	--

TABLE 2
GROUNDWATER MONITORING DATA AND ANALYTICAL RESULTS ¹
FORMER UNOCAL BULK PLANT NO. 306562
1329 West Woodin Avenue
Chelan, Washington
Concentrations reported in µg/L

Well ID/ Date	TOC ² (ft.)	DTW (ft. BTOC)	SPHT (ft.)	GWE ³ (ft.)	TPH-DRO ⁷	TPH-HRO	TPH-GRO	Benzene	Toluene	Ethyl- benzene	Total Xylenes	Lead
MW-5												
4/9/91	--	--	--	--	<1,000	--	3,200	300	20	78	410	<5
8/27/91	--	--	--	--	20,000	2,500	7,000	270	21	38	460	<4
11/23/91	--	--	--	--	17,000	9,400	6,000	280	12	100	350	<3
2/20/92	--	--	--	--	8,000	5,200	4,000	220	28	120	440	<3
5/21/92	--	--	--	--	9,900	6,800	2,500	160	11	170	190	5.3
8/19/92	--	--	--	--	--	--	2,200	130	6.1	70	180	<2
11/12/92	--	--	--	--	15,000	--	2,100	91	5.8	<0.5	110	--
2/25/93	--	--	--	--	--	--	--	--	--	--	--	--
8/24/93	--	--	--	--	11,000	<3,800	1,500	86	4.1	47	92	--
7/8/94	--	--	--	--	16,000	3,000	3,000	67	3.5	43	130	--
1/4/95	--	--	--	--	13,000	2,300	1,000	<0.5	0.91	20	53	--
6/29/95	--	--	--	--	11,000	2,900	3,300	73	9.5	110	260	--
12/29/95	--	--	--	--	23,000	8,900	1,300	70	2.6	37	47	--
6/19/96	--	--	--	--	17,500	5,540	2,200	43.1	3.85	55.7	122	--
12/13/96	--	--	--	--	853	<750	1,130	51.8	2.94	34	65	--
7/1/97	--	--	--	--	557	<750	3,890	87.7	14.4	144	294	--
12/30/97	--	--	--	--	525	<750	1,920	62.8	6.01	55	155	--
6/12/98	--	--	--	--	295	<750	3,820	88.1	13.4	76.6	400	--
12/7/98	--	--	--	--	388	<750	1,860	77	8.74	68	260	--
6/21/99	--	--	--	--	468	<750	1,050	31.1	1.24	<0.5	74.9	--
5/25/01	--	--	--	--	8,250	<500	1,740	56.2	8.18	88.2	221	--
8/9/01	--	--	--	--	8,600	502	1,030	50.3	2.69	34.1	71.8	--
11/13/01	--	--	--	--	275	<500	<50	0.72	<0.5	<0.5	1.69	--
1/30/02	--	--	--	--	309	<500	222	21.5	0.96	7.66	14.2	--
1/23/04	1,112.20	21.09	--	1,091.11	513	<500	235	2.35	0.671	1.28	2	--
4/12/04	1,112.20	25.65	--	1,086.55	<250	<500	389	0.79	1.03	1.14	2.19	--
4/30/05	Decommissioned											
MW-5A												
5/25/05	1,115.91	14.74	--	1,101.17	3,350	<500	850	3.64	<0.5	8.28	7.76	--
7/6/05	1,115.91	14.35	--	1,101.56	3,740	<500	807	3.41	1.68	13.6	27.9	--

TABLE 2
GROUNDWATER MONITORING DATA AND ANALYTICAL RESULTS ¹
FORMER UNOCAL BULK PLANT NO. 306562
1329 West Woodin Avenue
Chelan, Washington
Concentrations reported in µg/L

Well ID/ Date	TOC ² (ft.)	DTW (ft. BTOC)	SPHT (ft.)	GWE ³ (ft.)	TPH-DRO ⁷	TPH-HRO	TPH-GRO	Benzene	Toluene	Ethyl- benzene	Total Xylenes	Lead
MW-5A (cont)												
8/23/05 ⁴	1,115.91	--	--	--	4,680	<500	863	2.68	12.4	1.17	29.1	--
8/30/05	1,115.91	--	--	--	16,500	<500	941	1.22	0.904	6.05	10.5	--
11/16/05	1,115.91	19.44	--	1,096.47	1,960	<490	1,300	<0.5	<0.5	2.59	<1	--
4/5/06	1,115.91	DRY	--	--	--	--	--	--	--	--	--	--
7/25/06	1,115.91	14.20	--	1,101.71	<250	<500	189	0.975	<2	<1	2.49	--
3/22/07	1,115.91	24.05	--	1,091.86	17,000	5,600⁵	250 ⁵	<0.5	<0.5	<0.5	<1.5	--
8/9/07	1,115.91	14.32	--	1,101.59	7,500	2,300⁵	220 ⁵	<0.5	<0.5	0.9 ⁵	<1.5	--
11/13/07	1,115.91	20.09	--	1,095.82	11,000	2,500⁵	600	<0.5	0.6 ⁵	1.4 ⁵	2.3 ⁵	--
3/8/08	1,115.91	29.27	--	1,086.64	NOT SAMPLED DUE TO INSUFFICIENT WATER			--	--	--	--	--
5/23/08	1,115.91	26.43	--	1,089.48	5,900	<2,000	190 ⁵	<0.5	<0.5	0.6 ⁵	<1.5	--
8/22/08	1,115.91	14.40	--	1,101.51	6,900	1,400⁵	290	0.5 ⁵	1.1 ⁵	0.8 ⁵	1.6 ⁵	--
2/11/09	1,115.91	24.75	--	1,091.16	13,000	4,900	170 ⁵	<0.5	<0.5	0.6 ⁵	<1.5	--
4/12/10	1,115.91	23.97	--	1,091.94	9,900	2,300	240	<0.5	<0.5	0.5	<1.5	--
10/14/10	1,115.91	17.17	--	1,098.74	12,000	4,100	330	<0.5	<0.5	<0.5	<1.5	--
4/12/11	1,115.91	29.24	--	1,086.67	NOT SAMPLED DUE TO INSUFFICIENT WATER			--	--	--	--	--
10/11/11	1,115.91	17.25	--	1,098.66	120	<71	<50	<0.5	<0.5	<0.5	<1.5	--
5/23/12	1,115.91	22.60	--	1,093.31	36	<74	170	<0.5	<0.5	1.1	2.3	--
8/23/12	1,115.91	14.45	--	1,101.46	140	<69	72	<0.5	<0.5	<0.5	<1.5	--
11/29/12	1,115.91	19.68	--	1,096.23	370	<72	140	<0.5	<0.5	0.6	<1.5	--
3/13/13	1,115.91	27.44	--	1,088.47	870	<70	100	<0.5	<0.5	<0.5	<1.5	--
6/11/13	1,115.91	17.46	--	1,098.45	150	<70	330	<0.5	<0.5	3.6	2.2	--
9/17/13	1,115.91	15.13	--	1,100.78	150	<70	<50	<0.5	<0.5	<0.5	<1.5	--
3/19/14	1,115.91	27.78	--	1,088.13	520	<68	99	<0.5	<0.5	<0.5	<1.5	--
5/9/14	1,115.91	24.72	--	1,091.19	170	<69	130	<0.5	<0.5	<0.5	<1.5	--
9/6/14	1,115.91	14.81	--	1,101.10	<28	<66	<50	<0.5	<0.5	<0.5	<1.5	--
11/14/14	1,115.91	19.69	--	1,096.22	<30	<70	<50	<0.5	<0.5	<0.5	<1.5	--
2/10/15	1,115.91	21.75	--	1,094.16	140	<67	280	<0.5	<0.5	<0.5	<1.5	--

TABLE 2
GROUNDWATER MONITORING DATA AND ANALYTICAL RESULTS ¹
FORMER UNOCAL BULK PLANT NO. 306562
1329 West Woodin Avenue
Chelan, Washington
Concentrations reported in µg/L

Well ID/ Date	TOC ² (ft.)	DTW (ft. BTOC)	SPHT (ft.)	GWE ³ (ft.)	TPH-DRO ⁷	TPH-HRO	TPH-GRO	Benzene	Toluene	Ethyl- benzene	Total Xylenes	Lead
MW-6												
4/9/91	--	--	--	--	<1,000	--	<1,000	<0.5	<0.5	<0.5	<0.5	<5
8/27/91	--	--	--	--	<1,000	<1,000	<1,000	<0.5	<0.5	<0.5	<0.5	<2
11/23/91	--	--	--	--	<1,000	<1,000	<1,000	<0.5	<0.5	<0.5	<0.5	<3
2/20/92	--	--	--	--	<1,000	<1,000	<1,000	<0.5	<0.5	<0.5	<0.5	<3
5/21/92	--	--	--	--	<500	1,700	<50	<0.5	<0.5	<0.5	<0.5	4.7
8/19/92	--	--	--	--	<250	--	<50	<0.5	<0.5	<0.5	<0.5	<2
11/12/92	--	--	--	--	<500	--	<100	<0.5	<0.5	<0.5	<0.5	--
2/25/93	--	DRY	--	--	--	--	--	--	--	--	--	--
8/24/93	--	--	--	--	--	--	<100	<0.5	<0.5	<0.5	<0.5	--
7/8/94	--	--	--	--	360	840	<50	<0.5	<0.5	<0.5	<1	--
1/4/95	--	--	--	--	470	800	<50	<0.5	<0.5	<0.5	<1	--
6/29/95	--	--	--	--	260	1,000	<50	<0.5	<0.5	<0.5	<1	--
12/29/95	--	--	--	--	270	890	<50	<0.5	<0.5	<0.5	<1	--
6/19/96	--	--	--	--	--	--	<50	<0.5	<0.5	<0.5	<1	--
12/13/96	--	--	--	--	<250	<750	<50	<0.5	<0.5	<0.5	<1	--
7/1/97	--	--	--	--	<250	<750	<50	<0.5	<0.5	<0.5	<1	--
12/30/97	--	--	--	--	<250	<750	--	--	--	--	--	--
6/12/98	--	--	--	--	<250	<750	--	--	--	--	--	--
12/7/98	--	--	--	--	<250	<750	--	--	--	--	--	--
6/21/99	--	--	--	--	<250	<750	--	--	--	--	--	--
5/25/01	--	--	--	--	<250	<500	<50	<0.5	<0.5	<0.5	<1	--
8/9/01	--	--	--	--	<250	<500	<50	<0.5	<0.5	<0.5	<1	--
11/13/01	--	--	--	--	<250	<500	<50	<0.5	<0.5	<0.5	<1	--
1/30/02	--	--	--	--	<250	<500	<50	<0.5	<0.5	<0.5	<1	--
1/23/04	1,115.82	21.02	--	1,094.80	<250	<500	<50	<0.5	<0.5	<0.5	<1	--
4/12/04	1,115.82	25.64	--	1,090.18	<250	<500	<50	<0.5	<0.5	<0.5	<1	--
5/25/05	1,115.82	UNABLE TO LOCATE		--	--	--	--	--	--	--	--	--
8/30/05	1,115.82	UNABLE TO LOCATE		--	--	--	--	--	--	--	--	--
11/16/05	1,115.82	19.30	--	1,096.52	<245	<490	<50	<0.5	<0.5	<0.5	<1	--
4/5/06	1,115.82	DRY	--	--	--	--	--	--	--	--	--	--
7/25/06	1,115.82	14.09	--	1,101.73	<250	<500	<100	<0.5	<2	<1	<1.5	--

TABLE 2
GROUNDWATER MONITORING DATA AND ANALYTICAL RESULTS ¹
FORMER UNOCAL BULK PLANT NO. 306562
1329 West Woodin Avenue
Chelan, Washington
Concentrations reported in µg/L

Well ID/ Date	TOC ² (ft.)	DTW (ft. BTOC)	SPHT (ft.)	GWE ³ (ft.)	TPH-DRO ⁷	TPH-HRO	TPH-GRO	Benzene	Toluene	Ethyl- benzene	Total Xylenes	Lead
MW-6A												
5/23/12	1,115.93	22.60	--	1,093.33	<30	<71	<50	<0.5	<0.5	<0.5	<1.5	--
8/23/12	1,115.93	14.40	--	1,101.53	<29	<69	<50	<0.5	<0.5	<0.5	<1.5	--
11/29/12	1,115.93	19.60	--	1,096.33	<30	<69	<50	<0.5	<0.5	<0.5	<1.5	--
3/13/13	1,115.93	27.36	--	1,088.57	<29	<68	<50	<0.5	<0.5	<0.5	<1.5	--
6/11/13	1,115.93	17.51	--	1,098.42	<30	<70	<50	<0.5	<0.5	<0.5	<1.5	--
9/17/13	1,115.93	15.06	--	1,100.87	<31	<71	<50	<0.5	<0.5	<0.5	<1.5	--
3/19/14	1,115.93	27.74	--	1,088.19	<30	<70	<50	<0.5	<0.5	<0.5	<1.5	--
5/9/14	1,115.93	24.72	--	1,091.21	<30	<70	<50	<0.5	<0.5	<0.5	<1.5	--
9/6/14	1,115.93	14.76	--	1,101.17	<28	<66	<50	<0.5	<0.5	<0.5	<1.5	--
11/14/14	1,115.93	19.60	--	1,096.33	<29	<67	<50	<0.5	<0.5	<0.5	<1.5	--
2/10/15	1,115.93	21.73	--	1,094.20	<29	<67	<50	<0.5	<0.5	<0.5	<1.5	--
MW-7												
11/15/92	--	--	--	--	1,700	--	<100	<0.5	<0.5	<0.5	0.7	--
2/25/93	--	--	--	--	--	--	--	--	--	--	--	--
8/24/93	--	--	--	--	<250	<250	<100	<0.5	<0.5	<0.5	<0.5	--
7/8/94	--	--	--	--	<50.0	600	<50	<0.5	<0.5	<0.5	<1	2
1/4/95	--	--	--	--	<50.0	1,300	<50	<0.5	<0.5	<0.5	<1	<2
6/29/95	--	--	--	--	370	1,000	<50	<0.5	<0.5	<0.5	<1	--
12/29/95	--	--	--	--	510	1,000	<50	<0.5	<0.5	<0.5	<1	--
6/19/96	--	--	--	--	841	789	<50	<0.5	<0.5	<0.5	<1	--
12/13/96	--	--	--	--	<250	<750	<50	<0.5	<0.5	<0.5	<1	--
7/1/97	--	--	--	--	<250	<750	<50	<0.5	<0.5	<0.5	--	--
12/30/97	--	--	--	--	<250	<750	--	--	--	--	--	--
6/12/98	--	--	--	--	<250	<750	--	--	--	--	--	--
12/7/98	--	--	--	--	<250	<750	--	--	--	--	--	--
6/21/99	--	--	--	--	<250	<750	--	--	--	--	--	--
5/25/01	--	--	--	--	<250	<500	<50	<0.5	<0.5	<0.5	<1	--
8/9/01	--	--	--	--	<250	<500	<50	<0.5	<0.5	<0.5	<1	--
11/13/01	--	--	--	--	<250	<500	<50	<0.5	<0.5	<0.5	<1	--
1/30/02	--	--	--	--	<250	<500	<50	<0.5	<0.5	<0.5	<1	--
1/23/04	1,121.04	26.41	--	1,094.63	<250	<500	<50	<0.5	<0.5	<0.5	<1	--

TABLE 2
GROUNDWATER MONITORING DATA AND ANALYTICAL RESULTS ¹
FORMER UNOCAL BULK PLANT NO. 306562
1329 West Woodin Avenue
Chelan, Washington
Concentrations reported in µg/L

Well ID/ Date	TOC ² (ft.)	DTW (ft. BTOC)	SPHT (ft.)	GWE ³ (ft.)	TPH-DRO ⁷	TPH-HRO	TPH-GRO	Benzene	Toluene	Ethyl- benzene	Total Xylenes	Lead
MW-7 (cont)												
4/12/04	1,121.04	30.92	--	1,090.12	<250	<500	<50	<0.5	<0.5	<0.5	<1	--
5/25/05	1,121.04	19.88	--	1,101.16	315	<500	<50	<0.5	<0.5	<0.5	<1	--
7/6/05	1,121.04	--	--	--	--	--	--	--	--	--	--	--
8/30/05	1,121.04	--	--	--	<250	<500	<50	<0.5	<0.5	<0.5	<1	--
11/16/05	1,121.04	24.55	--	1,096.49	<250	<500	<50	<0.5	<0.5	<0.5	<1	--
4/5/06	1,121.04	DRY	--	--	--	--	--	--	--	--	--	--
7/25/06	1,121.04	19.32	--	1,101.72	<250	<500	<100	<0.5	<2	<1	<1.5	--
3/22/07	--	--	--	--	<48	--	--	<0.5	<0.5	<0.5	<1.5	--
8/9/07	--	--	--	--	<50	--	--	<0.5	<0.5	<0.5	<1.5	--
11/13/07	--	--	--	--	<50	--	--	<0.5	<0.5	<0.5	<1.5	--
5/23/08	1,121.04	DRY	--	--	<50	--	--	<0.5	<0.5	<0.5	<1.5	--
8/22/08	--	--	--	--	<50	--	--	<0.5	<0.5	<0.5	<1.5	--
2/11/09	--	--	--	--	<50	--	--	<0.5	<0.5	<0.5	<1.5	--
4/12/10	--	--	--	--	--	--	--	--	--	--	--	--
10/14/10	--	--	--	--	--	--	--	--	--	--	--	--
4/12/11	--	--	--	--	NOT SAMPLED DUE TO INSUFFICIENT WATER			--	--	--	--	--
10/11/11	1,121.04	24.38	--	1,096.66	<30	<70	<50	<0.5	<0.5	<0.5	<1.5	--
5/26/12	1,121.04	27.50	--	1,093.54	<33	<77	<50	<0.5	<0.5	<0.5	<1.5	--
8/23/12	1,121.04	19.56	--	1,101.48	<30	<70	<50	<0.5	<0.5	<0.5	<1.5	--
11/29/12	1,121.04	24.85	--	1,096.19	<39	<90	<50	<0.5	<0.5	<0.5	<1.5	--
3/13/13	1,121.04	32.55	--	1,088.49	<34	<80	<50	<0.5	<0.5	<0.5	<1.5	--
6/10/13	1,121.04	22.63	--	1,098.41	--	--	--	--	--	--	--	--
9/17/13	1,121.04	20.26	--	1,100.78	--	--	--	--	--	--	--	--
3/19/14	1,121.04	33.18	--	1,087.86	--	--	--	--	--	--	--	--
5/8/14	1,121.04	29.72	--	1,091.32	--	--	--	--	--	--	--	--
9/6/14	1,121.04	19.82	--	1,101.22	--	--	--	--	--	--	--	--
11/14/14	1,121.04	24.87	--	1,096.17	--	--	--	--	--	--	--	--
2/10/15	1,121.04	27.03	--	1,094.01	--	--	--	--	--	--	--	--

TABLE 2
GROUNDWATER MONITORING DATA AND ANALYTICAL RESULTS ¹
FORMER UNOCAL BULK PLANT NO. 306562
1329 West Woodin Avenue
Chelan, Washington
Concentrations reported in µg/L

Well ID/ Date	TOC ² (ft.)	DTW (ft. BTOC)	SPHT (ft.)	GWE ³ (ft.)	TPH-DRO ⁷	TPH-HRO	TPH-GRO	Benzene	Toluene	Ethyl- benzene	Total Xylenes	Lead
MW-8												
05/25/01	1,116.28	--	--	--	<250	<500	<50	<0.5	<0.5	<0.5	<1	--
08/09/01	1,116.28	--	--	--	<250	<500	<50	<0.5	<0.5	<0.5	<1	--
11/13/01	1,116.28	--	--	--	<250	<500	<50	<0.5	<0.5	<0.5	<1	--
01/30/02	1,116.28	--	--	--	<250	<500	<50	<0.5	<0.5	<0.5	<1	--
1/23/04	1,116.28	21.54	--	1,094.74	<250	<500	<50	<0.5	<0.5	<0.5	<1	--
4/12/04	1,116.28	26.12	--	1,090.16	<250	<500	<50	<0.5	<0.5	<0.5	<1	--
5/25/05	1,116.28	15.10	--	1,101.18	3,260	911	<50	<0.5	<0.5	<0.5	<1	--
7/6/05	1,116.28	14.71	--	1,101.57	351	<500	<50	<0.5	<0.5	<0.5	<1	--
8/23/05 ⁴	1,116.28	--	--	--	<250	<500	<50	<0.5	<0.5	<0.5	<1	--
8/30/05	1,116.28	--	--	--	<250	1,040	<50	<0.5	<0.5	<0.5	<1	--
11/16/05	1,116.28	19.80	--	1,096.48	<243	<485	<50	<0.5	<0.5	<0.5	<1	--
4/5/06	1,116.28	DRY	--	--	--	--	--	--	--	--	--	--
7/25/06	1,116.28	14.56	--	1,101.72	<250	<500	<100	<0.5	<2	<1	<1.5	--
3/22/07	1,116.28	24.39	--	1,091.89	1,500	570⁵	<48	<0.5	<0.5	<0.5	<1.5	--
8/9/07	1,116.28	14.71	--	1,101.57	3,000	1,600	<50	<0.5	<0.5	0.7 ⁵	3.8 ⁵	--
11/13/07	1,116.28	20.43	--	1,095.85	1,900	890	<50	<0.5	<0.5	<0.5	<1.5	--
3/8/08	1,116.28	29.88	--	1,086.40	NOT SAMPLED DUE TO INSUFFICIENT WATER			--	--	--	--	--
5/23/08	1,116.28	26.61	--	1,089.67	710	170 ⁵	<50	<0.5	<0.5	<0.5	<1.5	--
8/22/08	1,116.28	14.78	--	1,101.50	1,500	110 ⁵	<50	<0.5	<0.5	<0.5	<1.5	--
2/11/09	1,116.28	25.13	--	1,091.15	1,100	810	<50	<0.5	<0.5	<0.5	<1.5	--
4/12/10	1,116.28	24.34	--	1,091.94	430	140	<50	<0.5	<0.5	<0.5	<1.5	--
10/14/10	1,116.28	17.55	--	1,098.73	1,100	610	<50	<0.5	<0.5	<0.5	<1.5	--
4/12/11	1,116.28	29.60	--	1,086.68	NOT SAMPLED DUE TO INSUFFICIENT WATER			--	--	--	--	--
10/11/11	1,116.28	17.60	--	1,098.68	<31	<72	<50	<0.5	<0.5	<0.5	<1.5	--
5/23/12	1,116.28	22.90	--	1,093.38	<31	<73	<50	<0.5	<0.5	<0.5	<1.5	--
8/23/12	1,116.28	14.82	--	1,101.46	<29	<68	<50	<0.5	<0.5	<0.5	<1.5	--
11/29/12	1,116.28	20.06	--	1,096.22	<30	<71	<50	<0.5	<0.5	<0.5	<1.5	--
3/13/13	1,116.28	27.80	--	1,088.48	<29	<69	<50	<0.5	<0.5	<0.5	<1.5	--
6/11/13	1,116.28	17.91	--	1,098.37	<31	<73	<50	<0.5	<0.5	<0.5	<1.5	--
9/17/13	1,116.28	15.48	--	1,100.80	<29	<68	<50	<0.5	<0.5	<0.5	<1.5	--

TABLE 2
GROUNDWATER MONITORING DATA AND ANALYTICAL RESULTS ¹
FORMER UNOCAL BULK PLANT NO. 306562
1329 West Woodin Avenue
Chelan, Washington
Concentrations reported in µg/L

Well ID/ Date	TOC ² (ft.)	DTW (ft. BTOC)	SPHT (ft.)	GWE ³ (ft.)	TPH-DRO ⁷	TPH-HRO	TPH-GRO	Benzene	Toluene	Ethyl- benzene	Total Xylenes	Lead
MW-8 (cont)												
3/19/14	1,116.28	28.14	--	1,088.14	<29	<67	<50	<0.5	<0.5	<0.5	<1.5	--
5/9/14	1,116.28	25.06	--	1,091.22	<29	<68	<50	<0.5	<0.5	<0.5	<1.5	--
9/6/14	1,116.28	15.17	--	1,101.11	<29	<69	<50	<0.5	<0.5	<0.5	<1.5	--
11/14/14	1,116.28	20.01	--	1,096.27	<30	<70	<50	<0.5	<0.5	<0.5	<1.5	--
2/10/15	1,116.28	22.13	--	1,094.15	<29	<67	<50	<0.5	<0.5	<0.5	<1.5	--
MW-9												
5/23/12	1,113.62	20.25	--	1,093.37	<31	<72	<50	<0.5	<0.5	<0.5	<1.5	--
8/23/12	1,113.62	12.15	--	1,101.47	<29	<67	<50	<0.5	<0.5	<0.5	<1.5	--
11/29/12	1,113.62	17.40	--	1,096.22	<30	<69	<50	<0.5	<0.5	<0.5	<1.5	--
3/13/13	1,113.62	25.12	--	1,088.50	<29	<68	<50	<0.5	<0.5	<0.5	<1.5	--
6/11/13	1,113.62	16.80	--	1,096.82	<30	<70	<50	<0.5	<0.5	<0.5	<1.5	--
9/17/13	1,113.62	14.34	--	1,099.28	<29	<68	<50	<0.5	<0.5	<0.5	<1.5	--
3/19/14	1,113.62	27.07	--	1,086.55	<31	<71	<50	<0.5	<0.5	<0.5	<1.5	--
5/9/14	1,113.62	23.98	--	1,089.64	<29	<67	<50	<0.5	<0.5	<0.5	<1.5	--
9/6/14	1,113.62	14.10	--	1,099.52	<29	<68	<50	<0.5	<0.5	<0.5	<1.5	--
11/14/14	1,113.62	17.37	--	1,096.25	<30	<69	<50	<0.5	<0.5	<0.5	<1.5	--
2/10/15	1,113.62	21.05	--	1,092.57	<29	<67	<50	<0.5	<0.5	<0.5	<1.5	--
MW-10												
5/23/12	1,115.56	22.25	--	1,093.31	<31	<72	<50	<0.5	<0.5	<0.5	<1.5	--
8/23/12	1,115.56	14.08	--	1,101.48	<29	<68	<50	<0.5	<0.5	<0.5	<1.5	--
11/29/12	1,115.56	19.33	--	1,096.23	<30	<69	<50	<0.5	<0.5	<0.5	<1.5	--
3/13/13	1,115.56	27.10	--	1,088.46	<28	<66	<50	<0.5	<0.5	<0.5	<1.5	--
6/11/13	1,115.56	17.16	--	1,098.40	<32	<74	<50	<0.5	<0.5	<0.5	<1.5	--
9/17/13	1,115.56	14.74	--	1,100.82	<29	<67	<50	<0.5	<0.5	<0.5	<1.5	--
3/19/14	1,115.56	27.40	--	1,088.16	<29	<67	<50	<0.5	<0.5	<0.5	<1.5	--
5/9/14	1,115.56	24.38	--	1,091.18	<28	<66	<50	<0.5	<0.5	<0.5	<1.5	--
9/6/14	1,115.56	14.44	--	1,101.12	<28	<66	<50	<0.5	<0.5	<0.5	<1.5	--
11/14/14	1,115.56	19.31	--	1,096.25	<29	<67	<50	<0.5	<0.5	<0.5	<1.5	--
2/10/15	1,115.56	21.40	--	1,094.16	<29	<67	<50	<0.5	<0.5	<0.5	<1.5	--

TABLE 2
GROUNDWATER MONITORING DATA AND ANALYTICAL RESULTS ¹
FORMER UNOCAL BULK PLANT NO. 306562
1329 West Woodin Avenue
Chelan, Washington
Concentrations reported in µg/L

Well ID/ Date	TOC ² (ft.)	DTW (ft. BTOC)	SPHT (ft.)	GWE ³ (ft.)	TPH-DRO ⁷	TPH-HRO	TPH-GRO	Benzene	Toluene	Ethyl- benzene	Total Xylenes	Lead
QA												
4/12/11	--	--	--	--	--	--	<50	<0.5	<0.5	<0.5	<1.5	--
10/11/11	--	--	--	--	--	--	<50	<0.5	<0.5	<0.5	<1.5	--
5/23/12	--	--	--	--	--	--	<50	<0.5	<0.5	<0.5	<1.5	--
8/23/12	--	--	--	--	--	--	<50	<0.5	<0.5	<0.5	<1.5	--
11/29/12	--	--	--	--	--	--	<50	<0.5	<0.5	<0.5	<1.5	--
3/14/13	--	--	--	--	--	--	<50	<0.5	<0.5	<0.5	<1.5	--
6/7/13	--	--	--	--	--	--	<50	<0.5	<0.5	<0.5	<1.5	--
9/17/13	--	--	--	--	--	--	<50	<0.5	<0.5	<0.5	<1.5	--
3/19/14	--	--	--	--	--	--	<50	<0.5	<0.5	<0.5	<1.5	--
5/9/14	--	--	--	--	--	--	<50	<0.5	<0.5	<0.5	<1.5	--
9/6/14	--	--	--	--	--	--	<50	<0.5	<0.5	<0.5	<1.5	--
11/14/14	--	--	--	--	--	--	<50	<0.5	<0.5	<0.5	<1.5	--
2/10/15	--	--	--	--	--	--	<50	<0.5	<0.5	<0.5	<1.5	--
Standard Laboratory Reporting Limits:					--	--	50	0.5	0.5	0.5	1.5	--
MTCA Method A Cleanup Levels:					500	500	800/1,000	5	1,000	700	1,000	15
Current Method: ⁶					NWTPH-Dx + Extended ⁷		NWTPH-Gx	USEPA 8021B				--

Abbreviations:

BTOC = Below top of casing

DTW = Depth to water

Ecology = Washington State Department of Ecology

ft. = Feet

GWE = Groundwater elevation

MTCA = Model Toxics Control Act

NAVD88 = North American Vertical Datum 1988

SPH = Separate-phase hydrocarbon

SPHT = SPH thickness

TOC = Top of casing

TPH = Total Petroleum Hydrocarbons

TPH-DRO = TPH as diesel-range hydrocarbons

TPH-GRO = TPH as gasoline-range hydrocarbons

TPH-HRO = TPH as heavy oil-range hydrocarbons

USEPA = United States Environmental Protection Agency

µg/L = Micrograms per liter

-- = Not Tested/Not Analyzed

Notes:

1 Analytical results in bold font indicate concentrations exceed Ecology's MTCA Method A cleanup levels.

2 TOC data provided by ENSR on October 17, 2008 in feet based on NAVD88 datum.

3 When SPH is present, GWE has been corrected using the following formula: $GWE = [(TOC - DTW) + (SPHT \times 0.80)]$.

4 Sample collected immediately after vacuum extraction event.

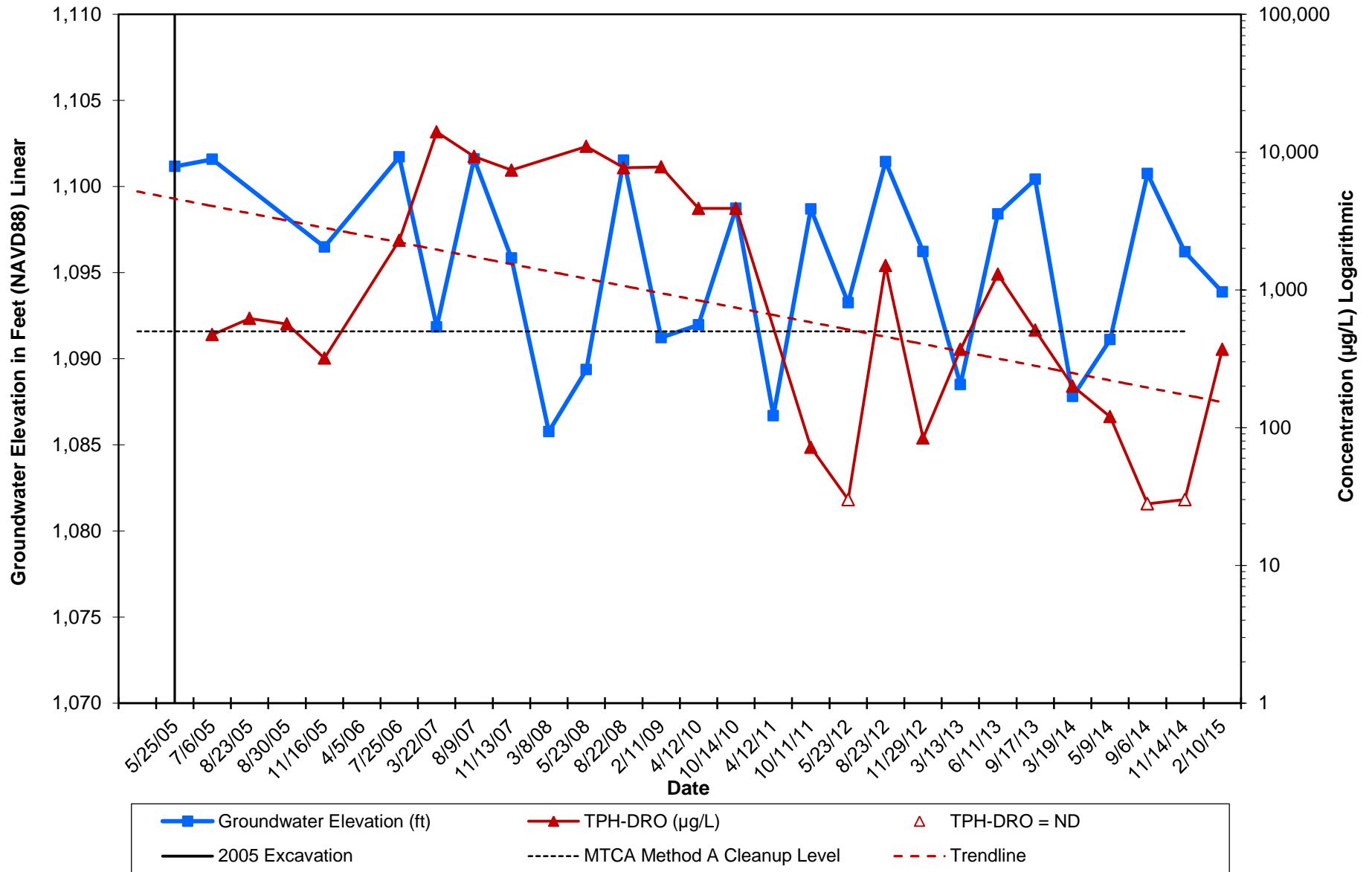
5 Laboratory report indicates estimated value.

6 Laboratory analytical methods for historical data may not be consistent with list of current analytical methods. When necessary, consult original laboratory reports to verify methods used.

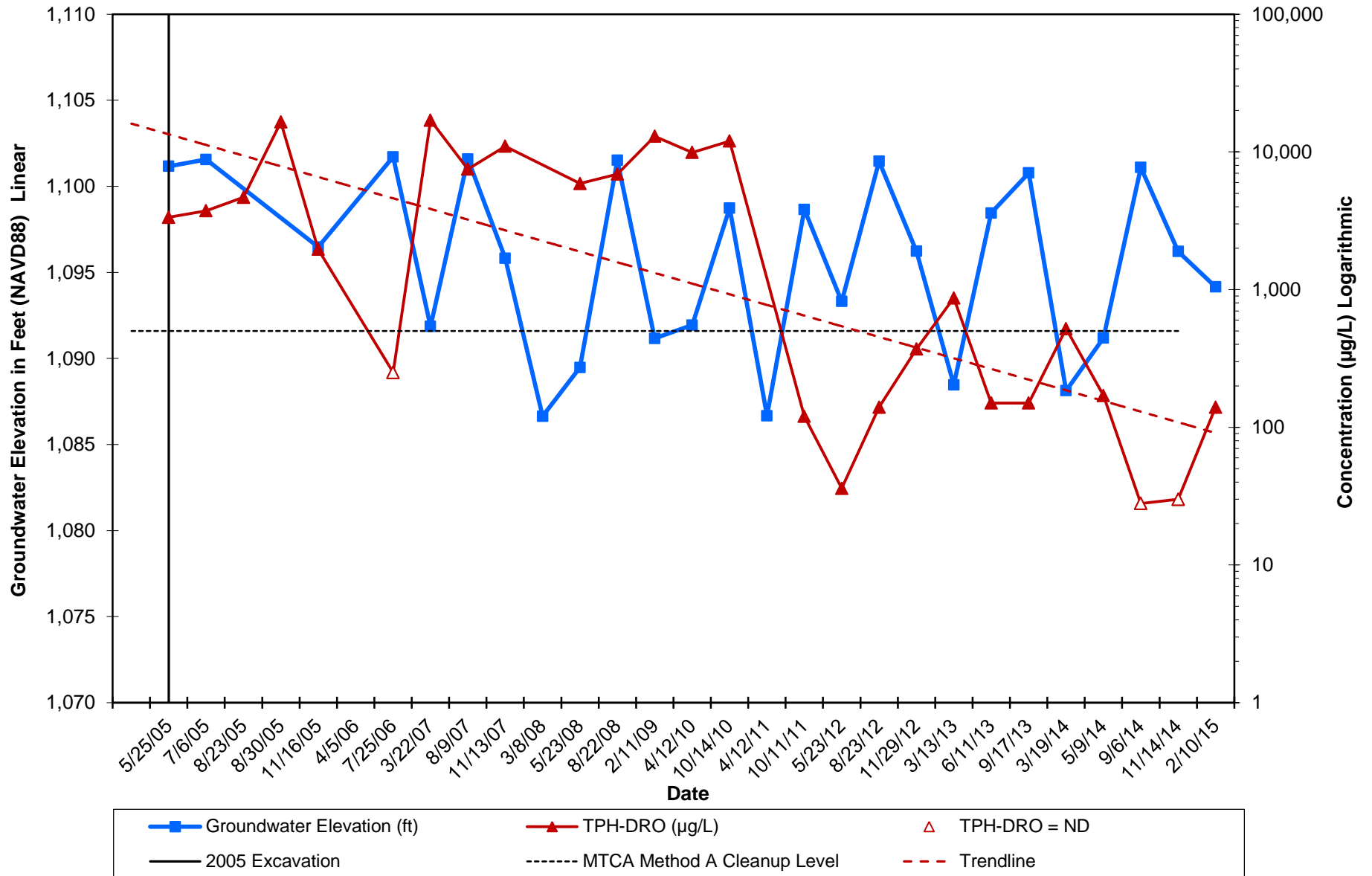
7 Analyzed with silica-gel clean up since 2010.

**Appendix A:
Hydrographs**

Well MW-3A
Hydrograph - Diesel-Range Hydrocarbons
Former Unocal Bulk Plant No. 306562
1329 West Woodin Avenue, Chelan, WA



Well MW-5A
Hydrograph - Diesel-Range Hydrocarbons
Former Unocal Bulk Plant No. 306562
1329 West Woodin Avenue, Chelan, WA



Appendix B:
Terrestrial Ecological Evaluation

Terrestrial Ecological Evaluation Process- Simplified Evaluation

Documentation Form

Criteria # (Concern)	Criteria	Response (Circle One)
1 (exposure)	Is the total area of soil contamination at the site less than or equal to 350 square feet	Yes (End TEE) / No
2 (exposure)	Does land use at the site and surrounding area make substantial wildlife exposure unlikely based on completion of Table 749-1 ?	Yes (End TEE) / No
3 (pathway)	Is there a potential exposure pathway from soil contamination to soil biota, plants, or wildlife?	Yes / No (End TEE)
4 (contaminant)	Are the hazardous substances at your site listed in Table 749-2 and is (or will) their location in the soil at your site be at a depth not exceeding the point of compliance, and at concentrations that do not exceed the values provided in Table 749-2 .	Yes (End TEE) / No Note: You must perform bioassays for contaminants at your site if no table value is provided.
5 (contaminant)	Will hazardous substances listed in Table 749-2 be present in the soil at your site within 6 feet of the ground surface at concentrations likely to be toxic, or with the potential to bioaccumulate, based on bioassays using methods approved by the department.	Yes / No (End TEE)

[\[Exclusions Main\]](#) [\[TEE Definitions\]](#) [\[Simplified or Site-Specific?\]](#) [\[Simplified Ecological Evaluation\]](#)
[\[Site-Specific Ecological Evaluation\]](#) [\[WAC 173-340-7493\]](#) [\[Index of Tables\]](#)

[\[TEE Home\]](#)

Table 749-1

Simplified Terrestrial Ecological Evaluation-Exposure Analysis Procedure

Estimate the area of contiguous (connected) <u>undeveloped land</u> on the site or within 500 feet of any area of the site to the nearest 1/2 acre (1/4 acre if the area is less than 0.5 acre).																						
1) From the table below, find the number of points corresponding to the area and enter this number in the field to the right.																						
	<table border="1"> <thead> <tr> <th>Area (acres)</th> <th>Points</th> </tr> </thead> <tbody> <tr><td>0.25 or less</td><td>4</td></tr> <tr><td>0.5</td><td>5</td></tr> <tr><td>1.0</td><td>6</td></tr> <tr><td>1.5</td><td>7</td></tr> <tr><td>2.0</td><td>8</td></tr> <tr><td>2.5</td><td>9</td></tr> <tr><td>3.0</td><td>10</td></tr> <tr><td>3.5</td><td>11</td></tr> <tr><td>4.0 or more</td><td>12</td></tr> </tbody> </table>	Area (acres)	Points	0.25 or less	4	0.5	5	1.0	6	1.5	7	2.0	8	2.5	9	3.0	10	3.5	11	4.0 or more	12	7
Area (acres)	Points																					
0.25 or less	4																					
0.5	5																					
1.0	6																					
1.5	7																					
2.0	8																					
2.5	9																					
3.0	10																					
3.5	11																					
4.0 or more	12																					
2) Is this an <u>industrial</u> or <u>commercial</u> property? If yes, enter a score of 3. If no, enter a score of 1		3																				
3) ^a Enter a score in the box to the right for the habitat quality of the site, using the following rating system ^b . High=1, Intermediate=2, Low=3		1																				
4) Is the undeveloped land likely to attract wildlife? If yes, enter a score of 1 in the box to the right. If no, enter a score of 2. ^c		1																				
5) Are there any of the following soil contaminants present: Chlorinated dioxins/furans, PCB mixtures, DDT, DDE, DDD, aldrin, chlordane, dieldrin, endosulfan, endrin, heptachlor, benzene hexachloride, toxaphene, hexachlorobenzene, pentachlorophenol, pentachlorobenzene? If yes, enter a score of 1 in the box to the right. If no, enter a score of 4.		4																				
6) Add the numbers in the boxes on lines 2-5 and enter this number in the box to the right. If this number is larger than the number in the box on line 1, the simplified evaluation may be ended.		9																				

Notes for Table 749-1

^a It is expected that this habitat evaluation will be undertaken by an experienced field biologist. If this is not the case, enter a conservative score of (1) for questions 3 and 4.

^b **Habitat rating system.** Rate the quality of the habitat as high, intermediate or low based on your professional judgment as a field biologist. The following are suggested factors to consider in making this evaluation:

Low: Early successional vegetative stands; vegetation predominantly noxious, nonnative, exotic plant species or weeds. Areas severely disturbed by human activity, including intensively cultivated croplands. Areas isolated from other habitat used by wildlife.

High: Area is ecologically significant for one or more of the following reasons: Late-[successional](#) native plant communities present; relatively high species diversity; used by an uncommon or rare species; [priority habitat](#) (as defined by the Washington Department of fish and Wildlife); part of a larger area of habitat where size or fragmentation may be important for the retention of some species.

Intermediate: Area does not rate as either high or low.

^c Indicate "yes" if the area attracts wildlife or is likely to do so. Examples: Birds frequently visit the area to feed; evidence of high use b mammals (tracks, scat, etc.); habitat "island" in an industrial area; unusual features of an area that make it important for feeding animals; heavy use during seasonal migrations.

[\[Area Calculation Aid\]](#) [\[Aerial Photo with Area Designations\]](#) [TEE Table 749-1] [\[Index of Tables\]](#)

[\[Exclusions Main\]](#) [\[TEE Definitions\]](#) [\[Simplified or Site-Specific?\]](#) [\[Simplified Ecological Evaluation\]](#) [\[Site-Specific Ecological Evaluation\]](#) [\[WAC 173-340-7493\]](#)

[\[TEE Home\]](#)