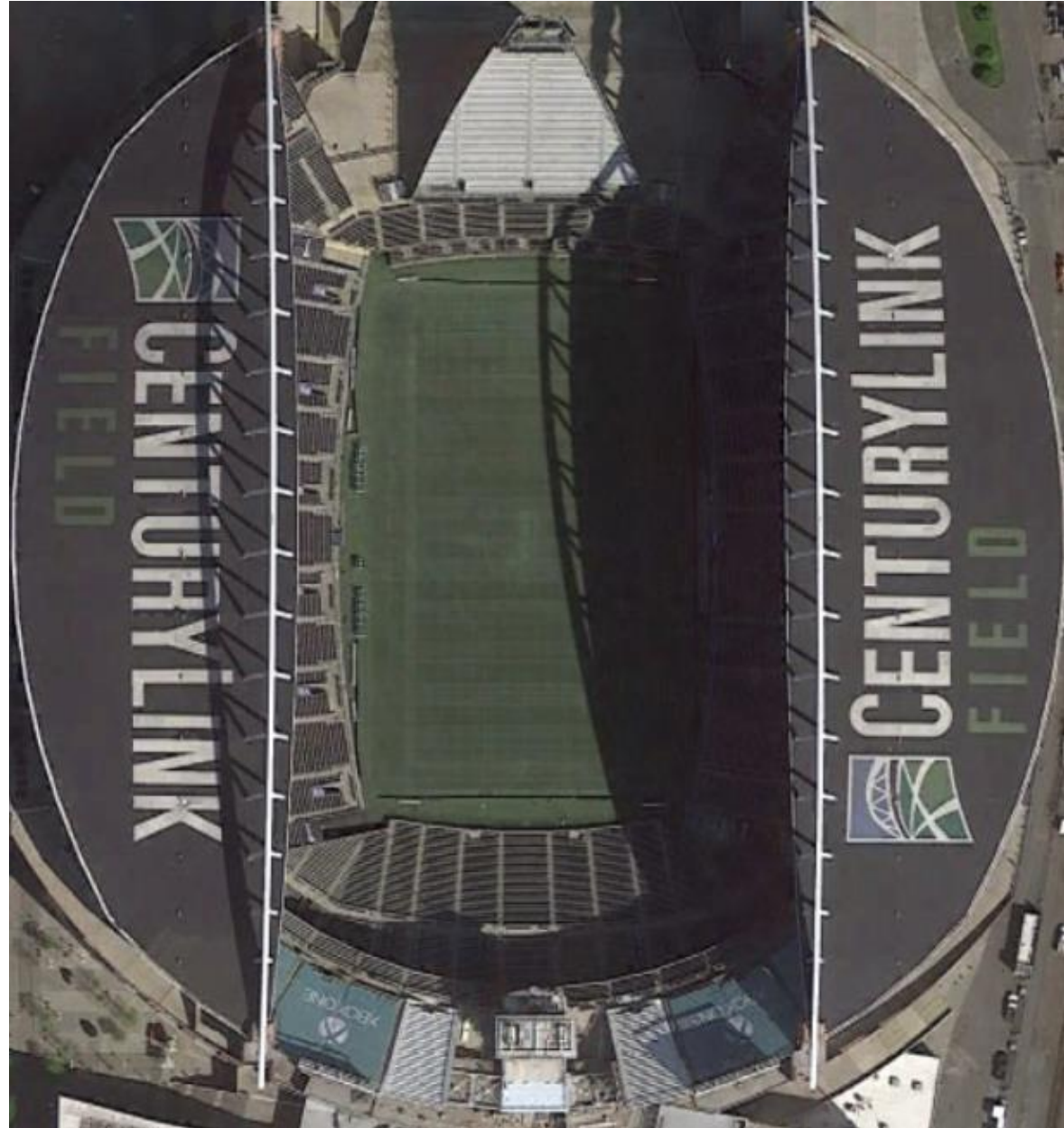




230 m.

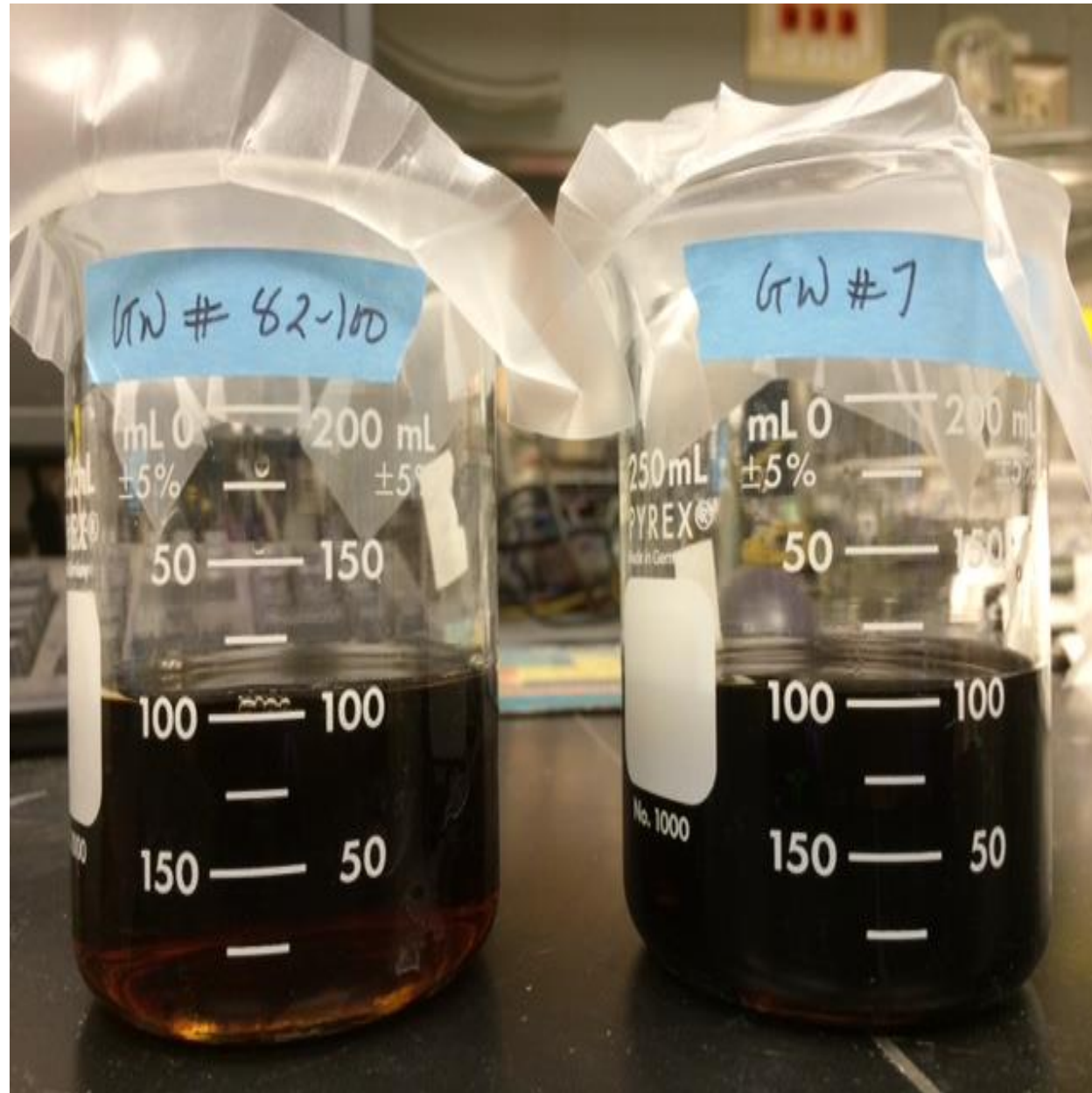


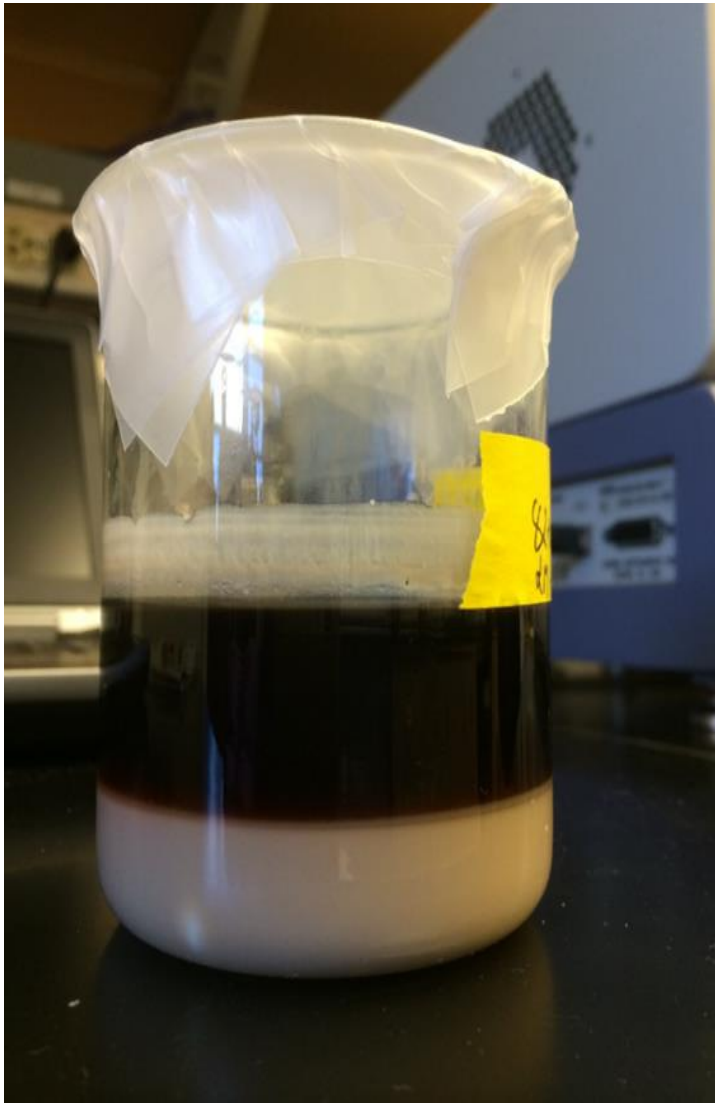
14 acres

250 m.

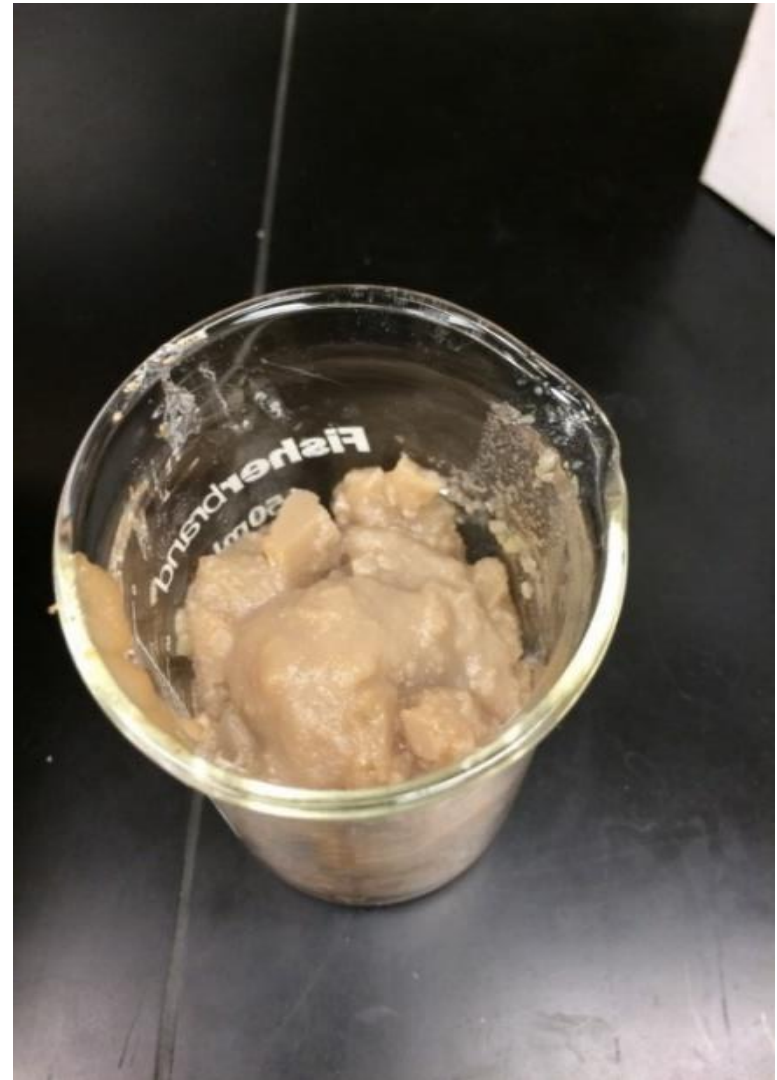








Slow acid  
addition

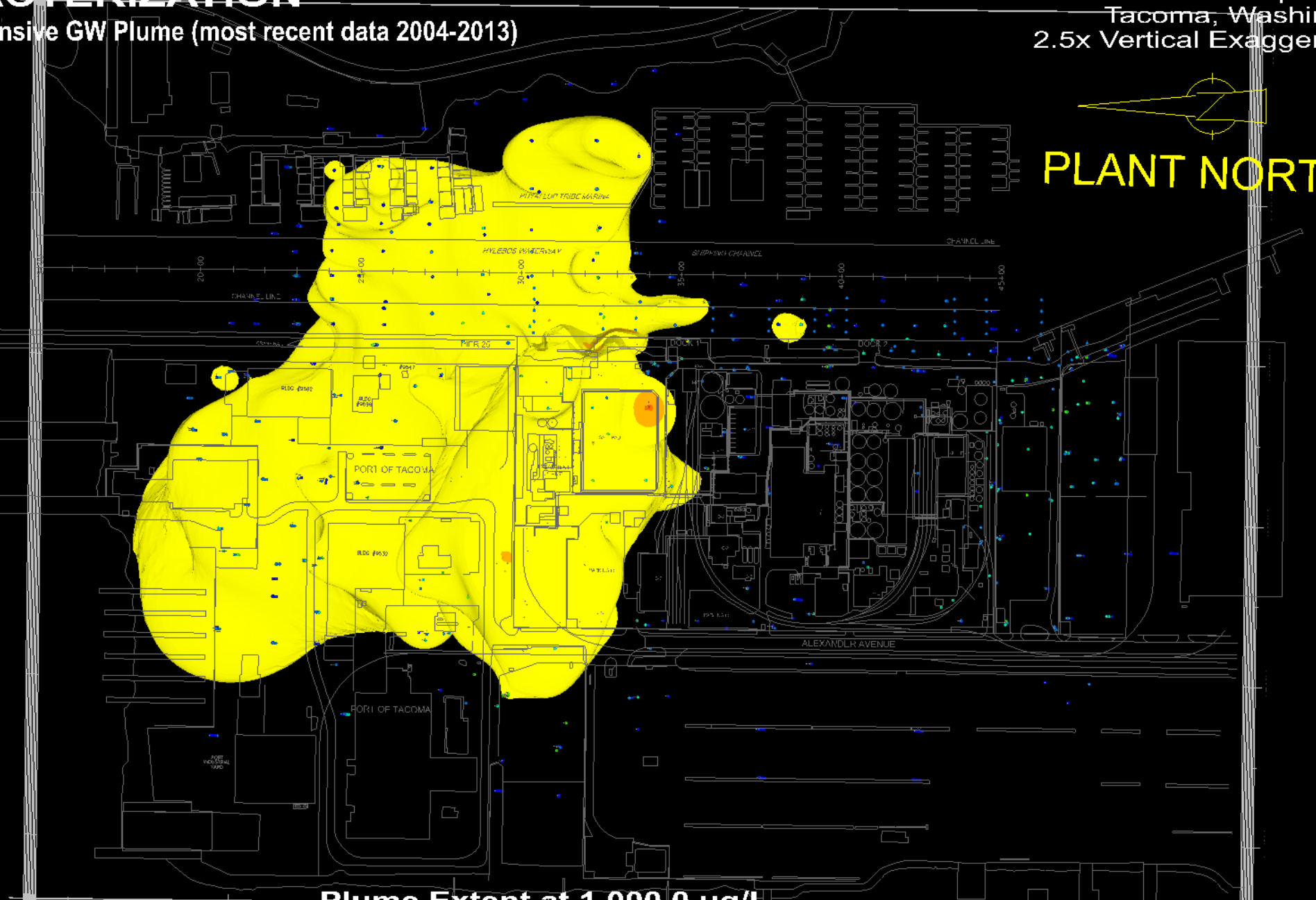
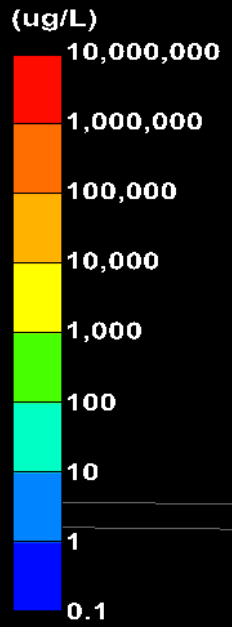


Rapid acid  
addition

# SITE CHARACTERIZATION

Total CVOCs Comprehensive GW Plume (most recent data 2004-2013)

Occidental Chemical Corporation  
Tacoma, Washington  
2.5x Vertical Exaggeration

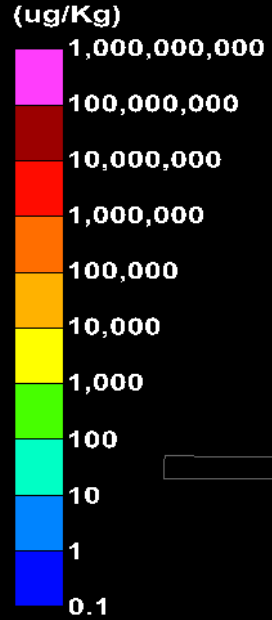


Plume Extent at 1,000.0 ug/L

# SITE CHARACTERIZATION

Total CVOCs Comprehensive Soil Plume (data up to 2013)

Occidental Chemical Corporation  
Tacoma, Washington  
2.5x Vertical Exaggeration



PLANT NORTH

Unsaturated Soil Criterion = NV  
Saturated Soil Criterion = NV  
Sediment Cleanup Level = NV

Plume Extent at 1,000.0 ug/Kg

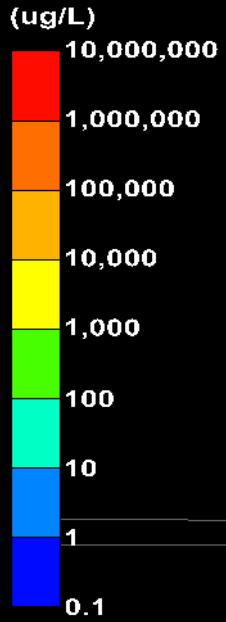




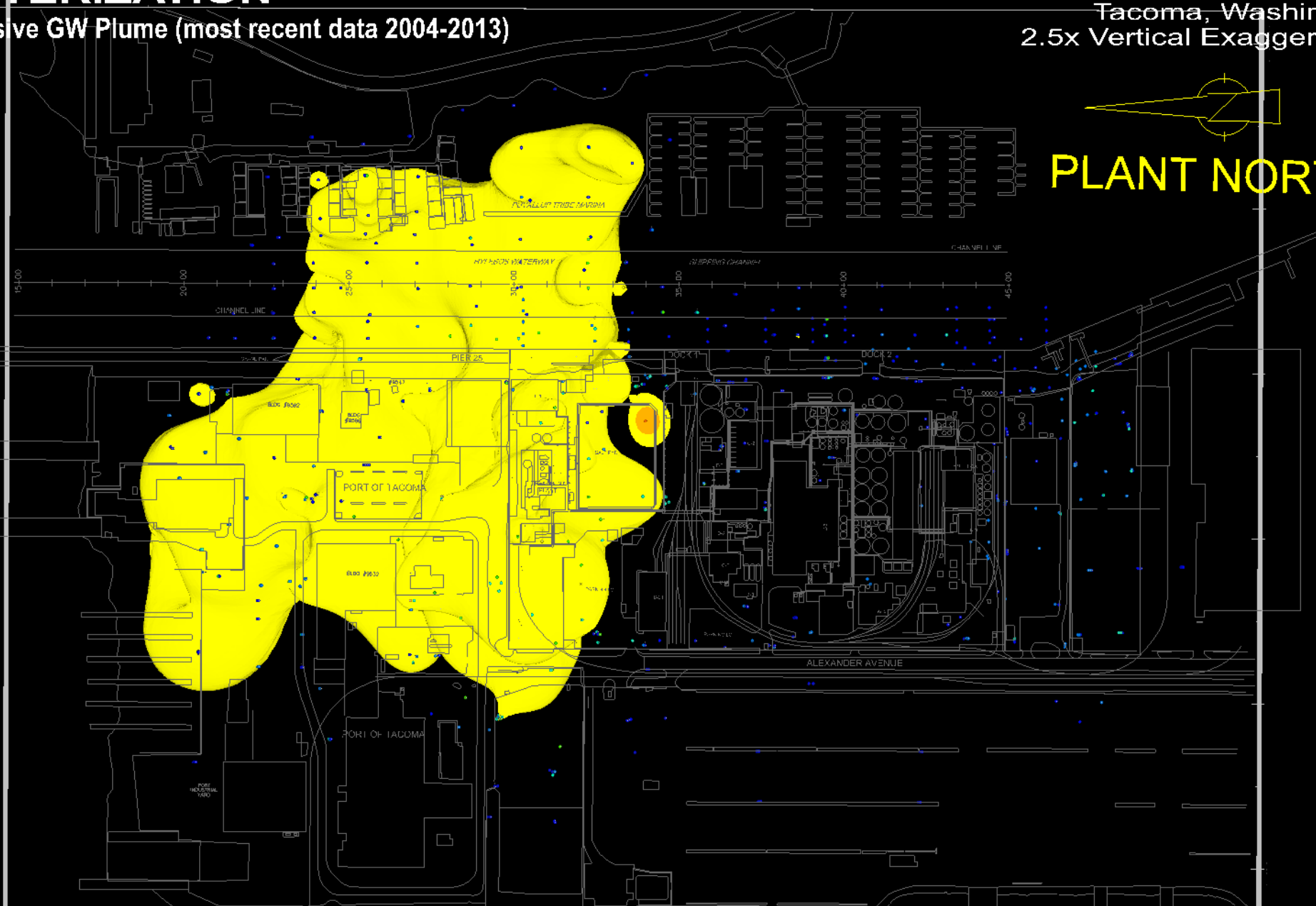
# SITE CHARACTERIZATION

Vinyl Chloride Comprehensive GW Plume (most recent data 2004-2013)

Occidental Chemical Corporation  
Tacoma, Washington  
2.5x Vertical Exaggeration



**PLANT NORTH**



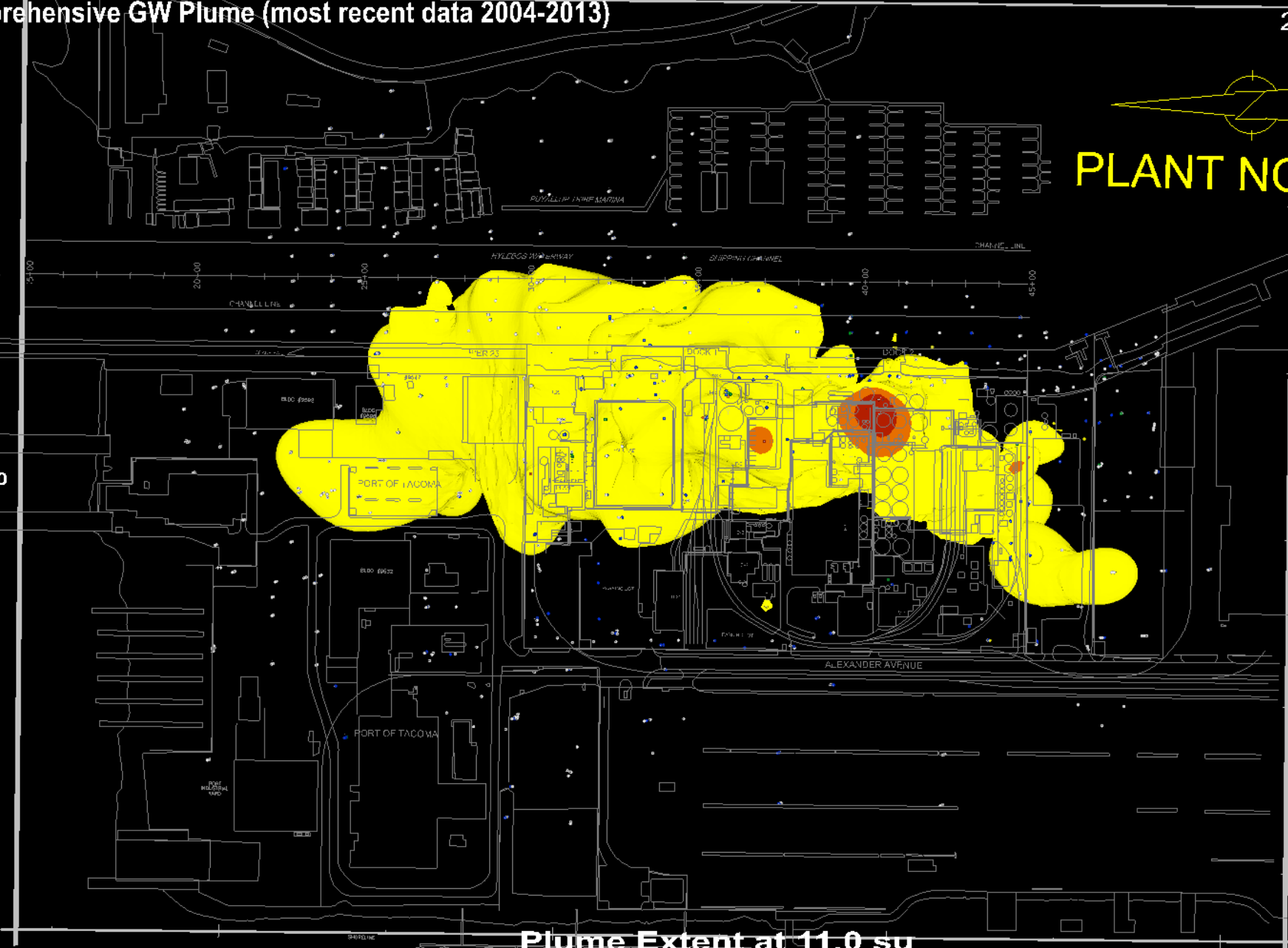
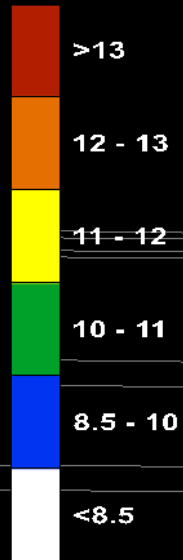
**Plume Extent at 1,000.0 ug/L**

# SITE CHARACTERIZATION

pH Comprehensive GW Plume (most recent data 2004-2013)

Occidental Chemical Corporation  
Tacoma, Washington  
2.5x Vertical Exaggeration

SU



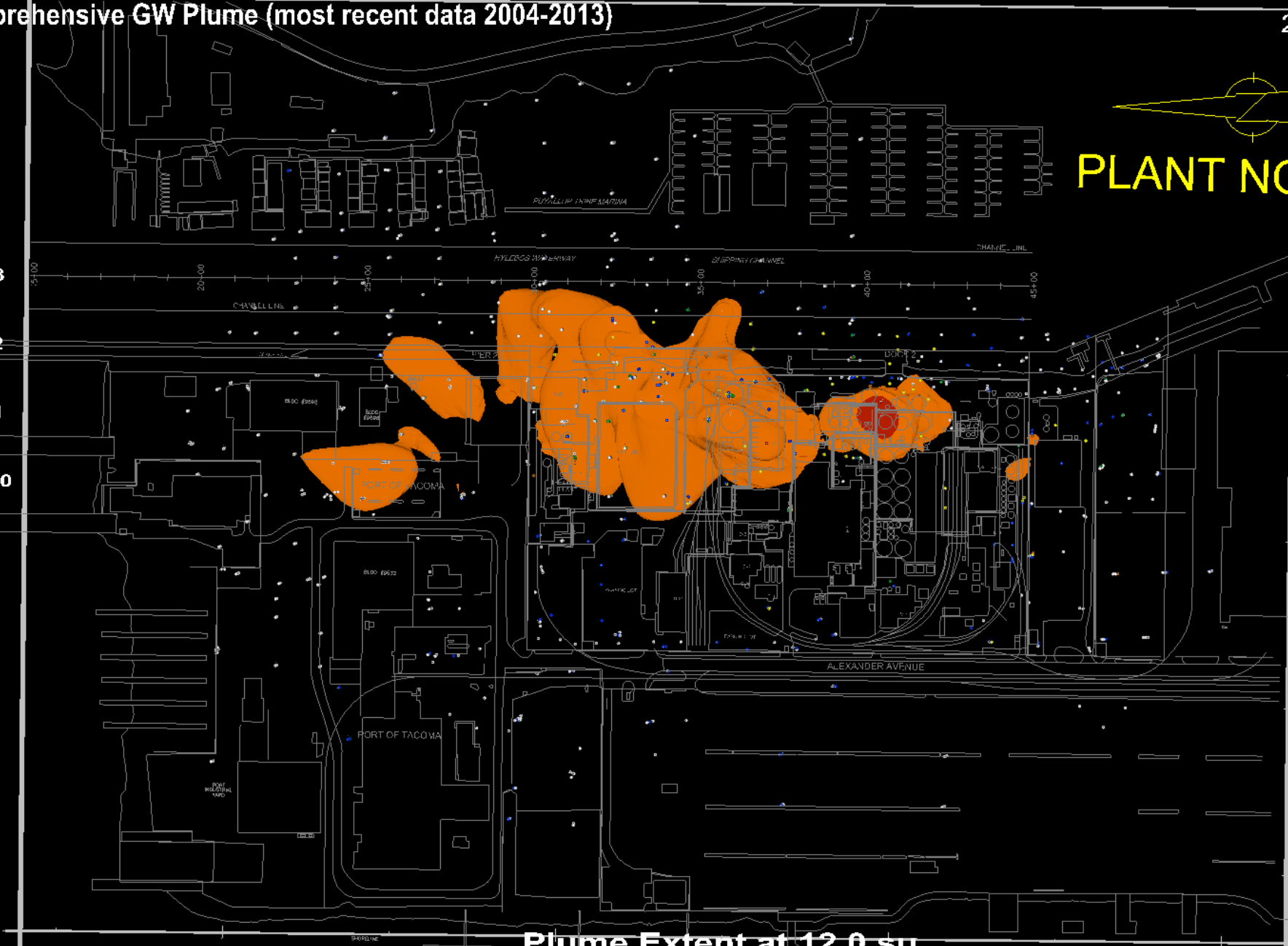
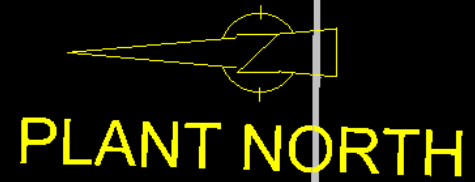
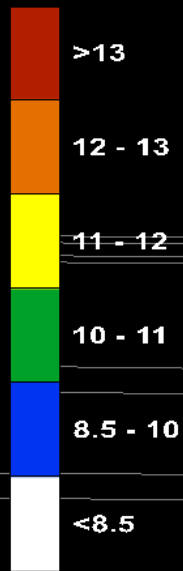
Plume Extent at 11.0 su

# SITE CHARACTERIZATION

pH Comprehensive GW Plume (most recent data 2004-2013)

Occidental Chemical Corporation  
Tacoma, Washington  
2.5x Vertical Exaggeration

su

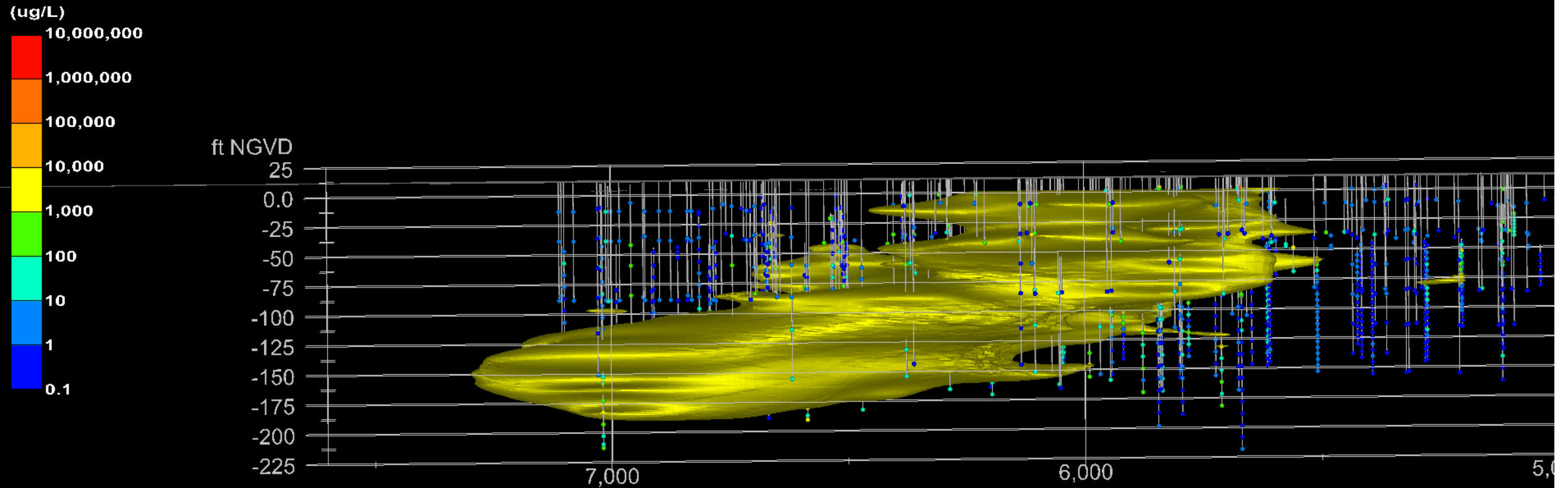


Plume Extent at 12.0 su

# SITE CHARACTERIZATION

Total CVOCs Comprehensive GW Plume (most recent data 2004-2013)

Occidental Chemical Corporation  
Tacoma, Washington  
2.5x Vertical Exaggeration

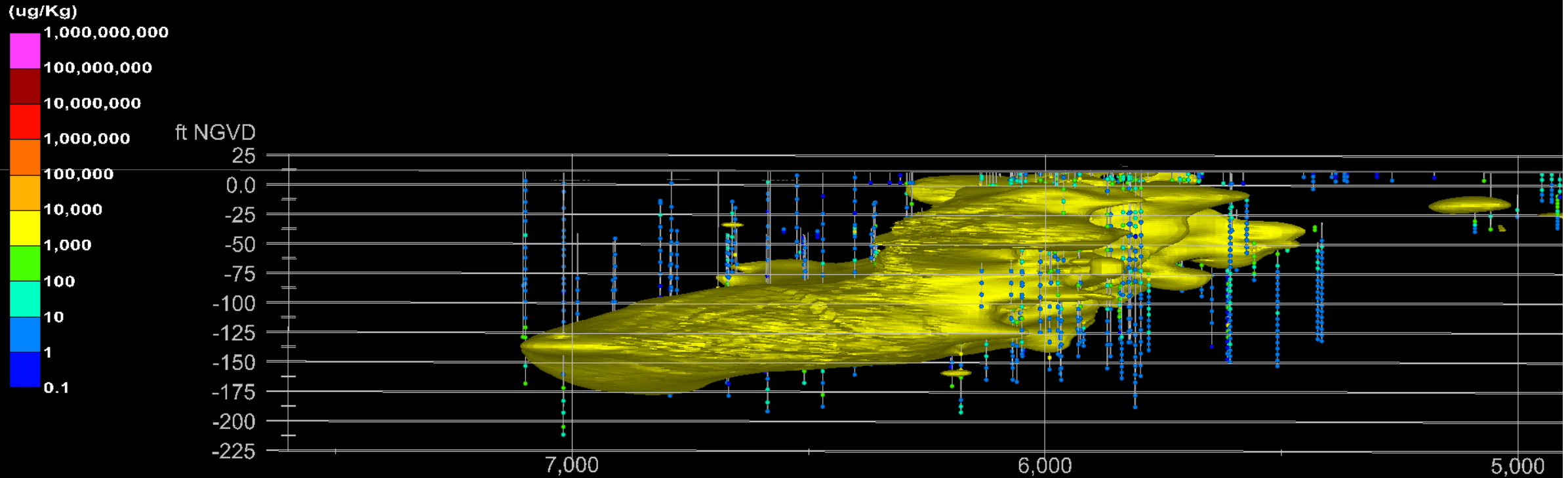


Plume Extent at 1,000.0  $\mu\text{g/L}$

# SITE CHARACTERIZATION

Total CVOCs Comprehensive Soil Plume (data up to 2013)

Occidental Chemical Corporation  
Tacoma, Washington  
2.5x Vertical Exaggeration



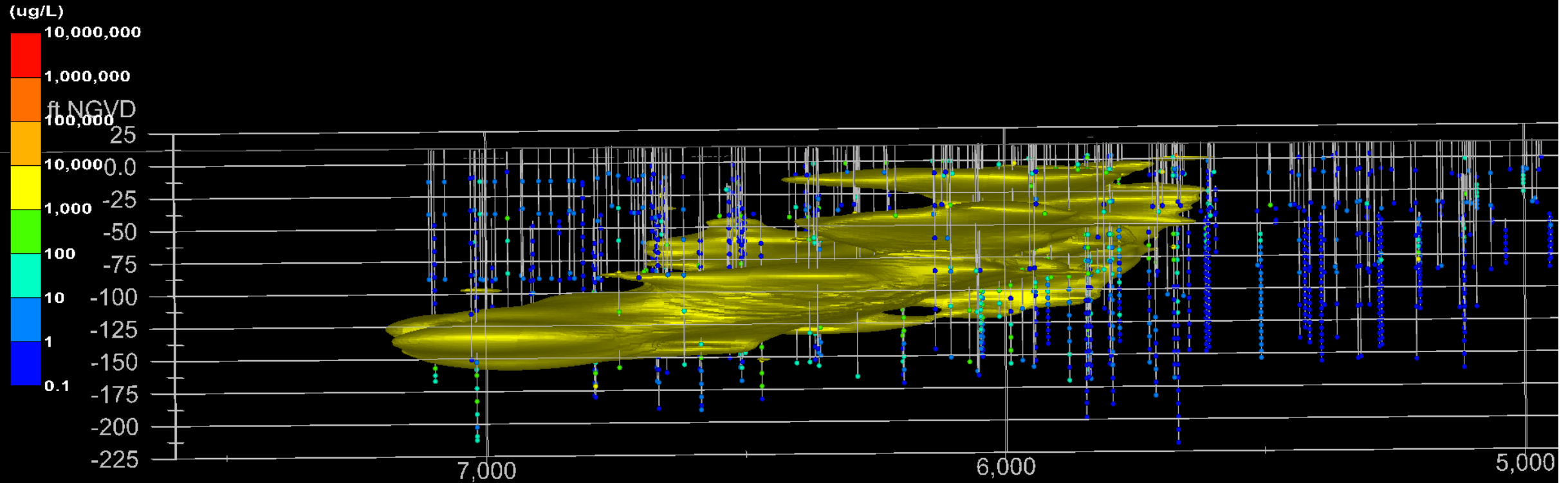
Unsaturated Soil Criterion = NV  
Saturated Soil Criterion = NV  
Sediment Cleanup Level = NV

**Plume Extent at 1,000.0 ug/Kg**

# SITE CHARACTERIZATION

Vinyl Chloride Comprehensive GW Plume (most recent data 2004-2013)

Occidental Chemical Corporation  
Tacoma, Washington  
2.5x Vertical Exaggeration



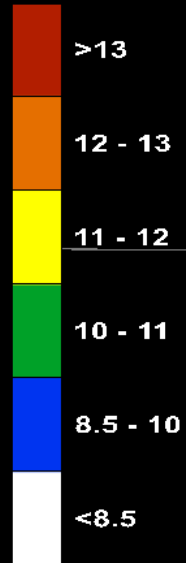
Plume Extent at 1,000.0 ug/L

# SITE CHARACTERIZATION

pH Comprehensive GW Plume (most recent data 2004-2013)

Occidental Chemical Corporation  
Tacoma, Washington  
2.5x Vertical Exaggeration

su



ft NGVD

25  
0.0  
-25  
-50  
-75  
-100  
-125  
-150  
-175  
-200  
-225

7,000

6,000

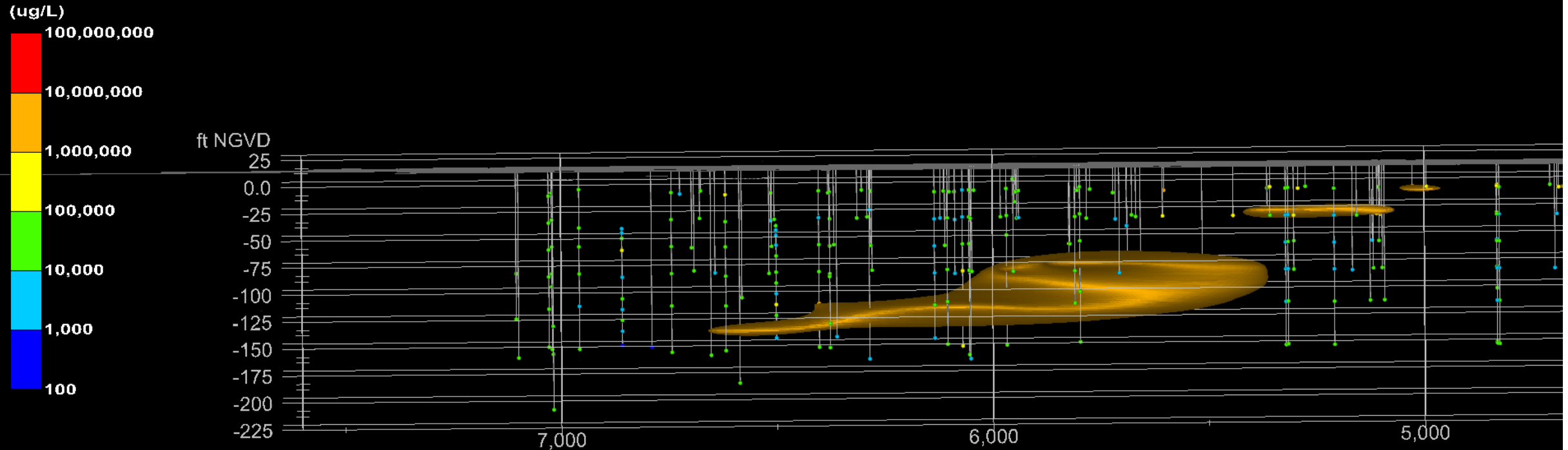
5,000

Plume Extent at 11.0 su

# SITE CHARACTERIZATION

Silicon Comprehensive GW Plume (most recent data 2004-2013)

Occidental Chemical Corporation  
Tacoma, Washington  
2.5x Vertical Exaggeration



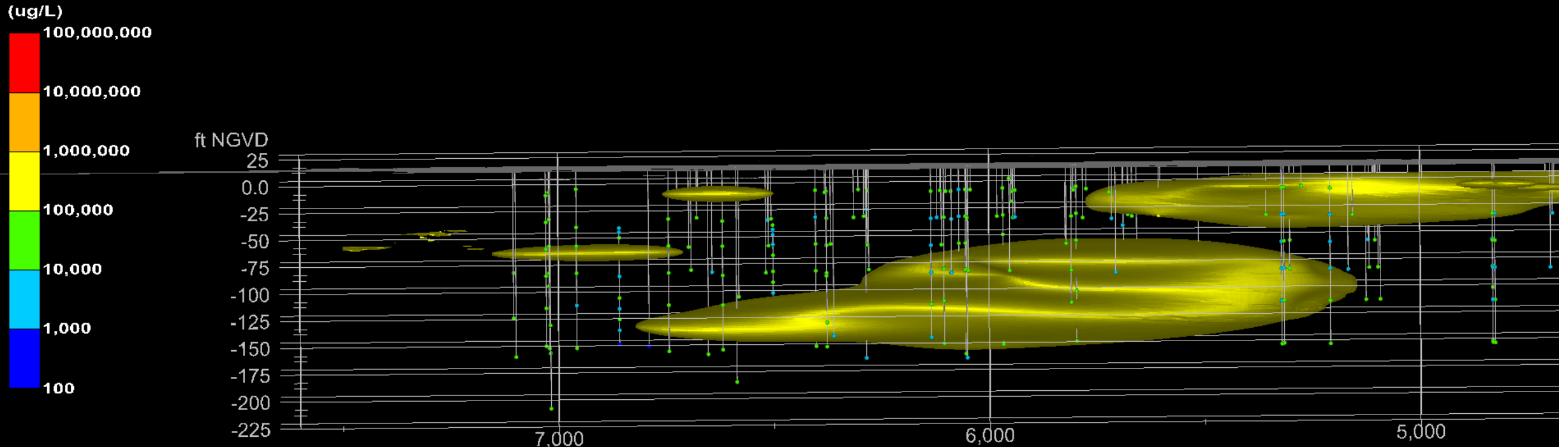
Plume Extent at 1,000,000 ug/L



# SITE CHARACTERIZATION

Silicon Comprehensive GW Plume (most recent data 2004-2013)

Occidental Chemical Corporation  
Tacoma, Washington  
2.5x Vertical Exaggeration



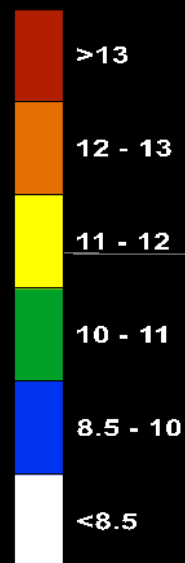
Plume Extent at 100,000 ug/L

# SITE CHARACTERIZATION

pH Comprehensive GW Plume (most recent data 2004-2013)

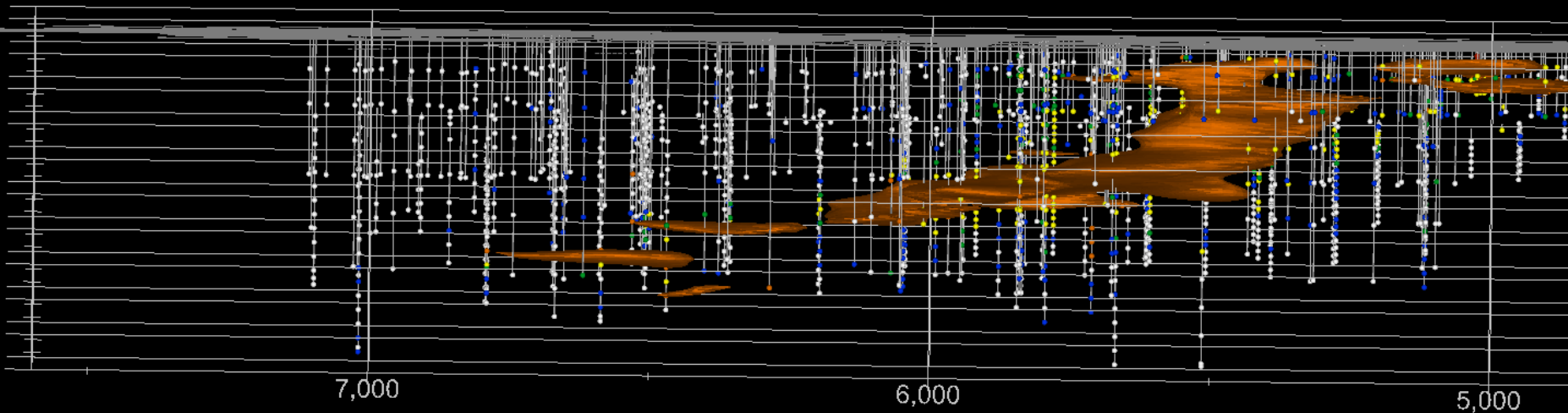
Occidental Chemical Corporation  
Tacoma, Washington  
2.5x Vertical Exaggeration

SU



ft NGVD

25  
0.0  
-25  
-50  
-75  
-100  
-125  
-150  
-175  
-200  
-225

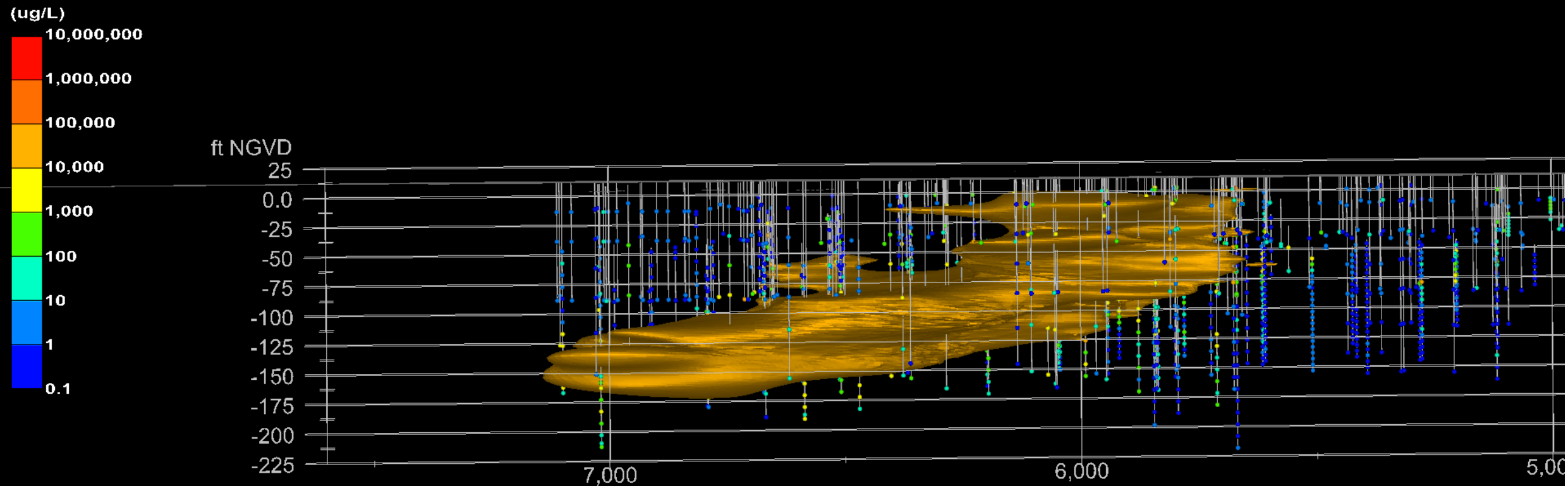


Plume Extent at 12.0 su

# SITE CHARACTERIZATION

Total CVOCs Comprehensive GW Plume (most recent data 2004-2013)

Occidental Chemical Corporation  
Tacoma, Washington  
2.5x Vertical Exaggeration

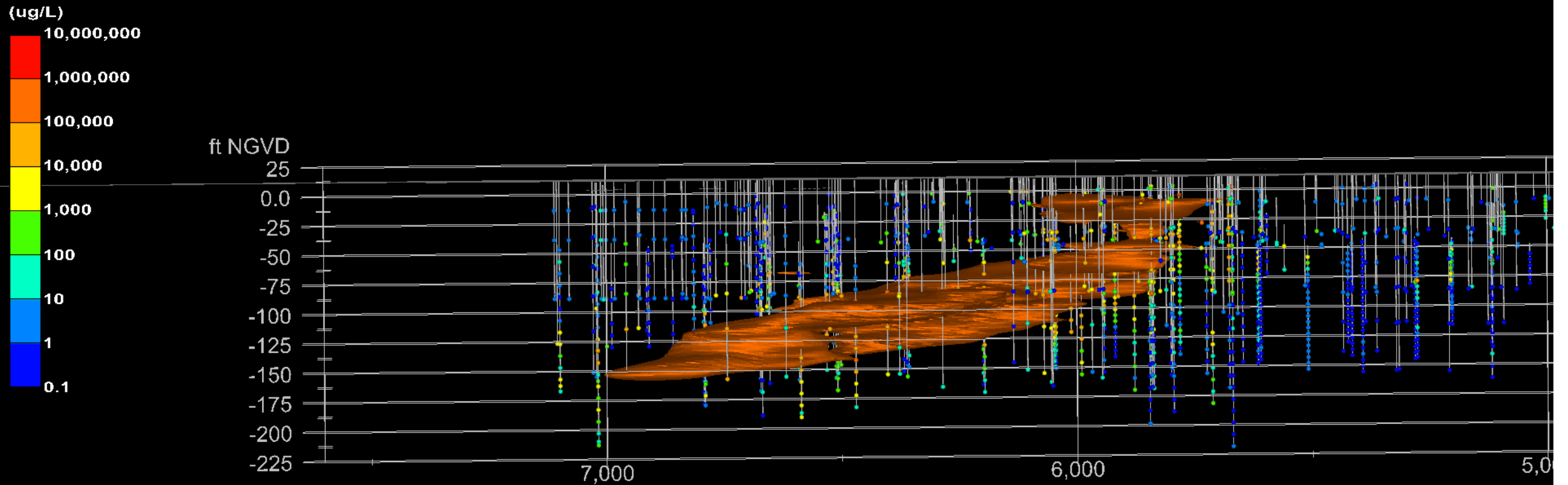


Plume Extent at 10,000.0 ug/L

# SITE CHARACTERIZATION

Total CVOCs Comprehensive GW Plume (most recent data 2004-2013)

Occidental Chemical Corporation  
Tacoma, Washington  
2.5x Vertical Exaggeration



Plume Extent at 100,000.0 ug/L

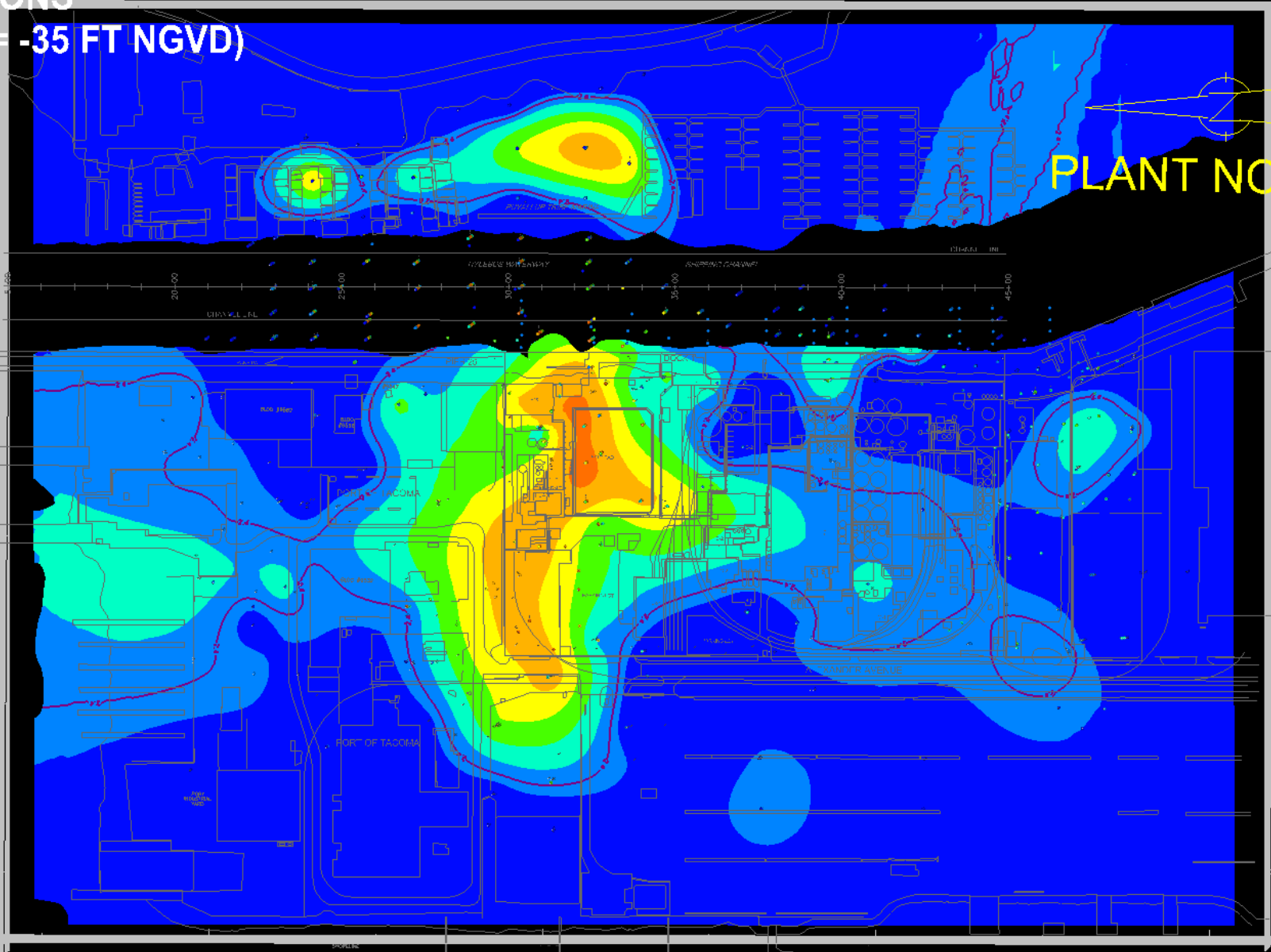
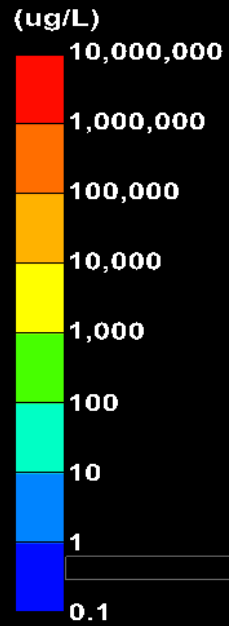
# SITE CHARACTERIZATION

Total CVOCs Comprehensive GW Plume (most recent data 2004-2013)

Occidental Chemical Corporation  
Tacoma, Washington  
2.5x Vertical Exaggeration

## HORIZONTAL SECTIONS

50-Foot Zone (Elev. = -35 FT NGVD)



PLANT NORTH

# SITE CHARACTERIZATION

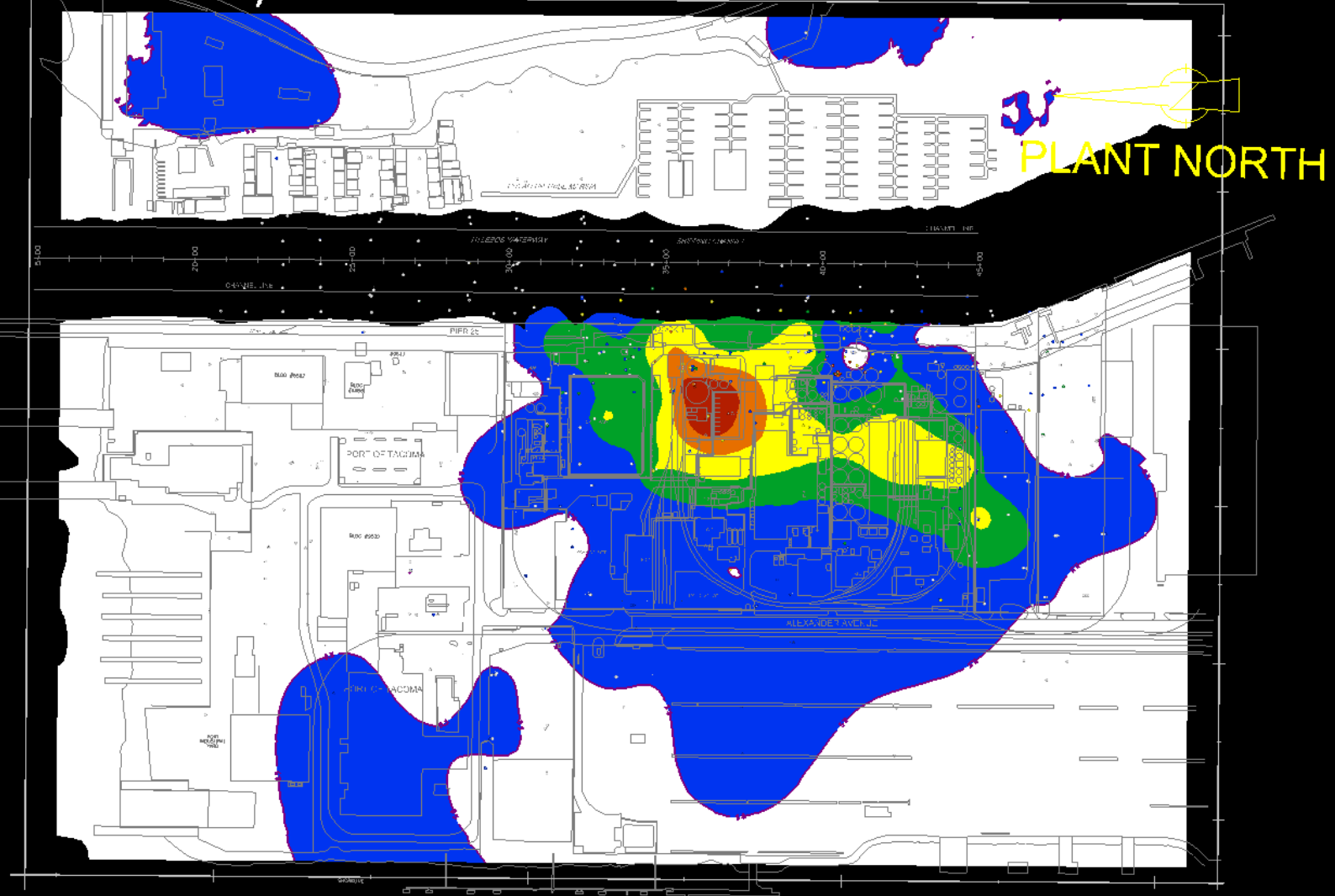
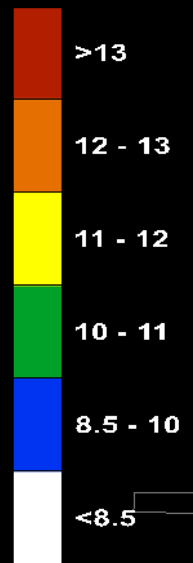
pH Comprehensive GW Plume (most recent data 2004-2013)

## HORIZONTAL SECTIONS

50-Foot Zone (Elev. = -35 FT NGVD)

Occidental Chemical Corporation  
Tacoma, Washington  
2.5x Vertical Exaggeration

su



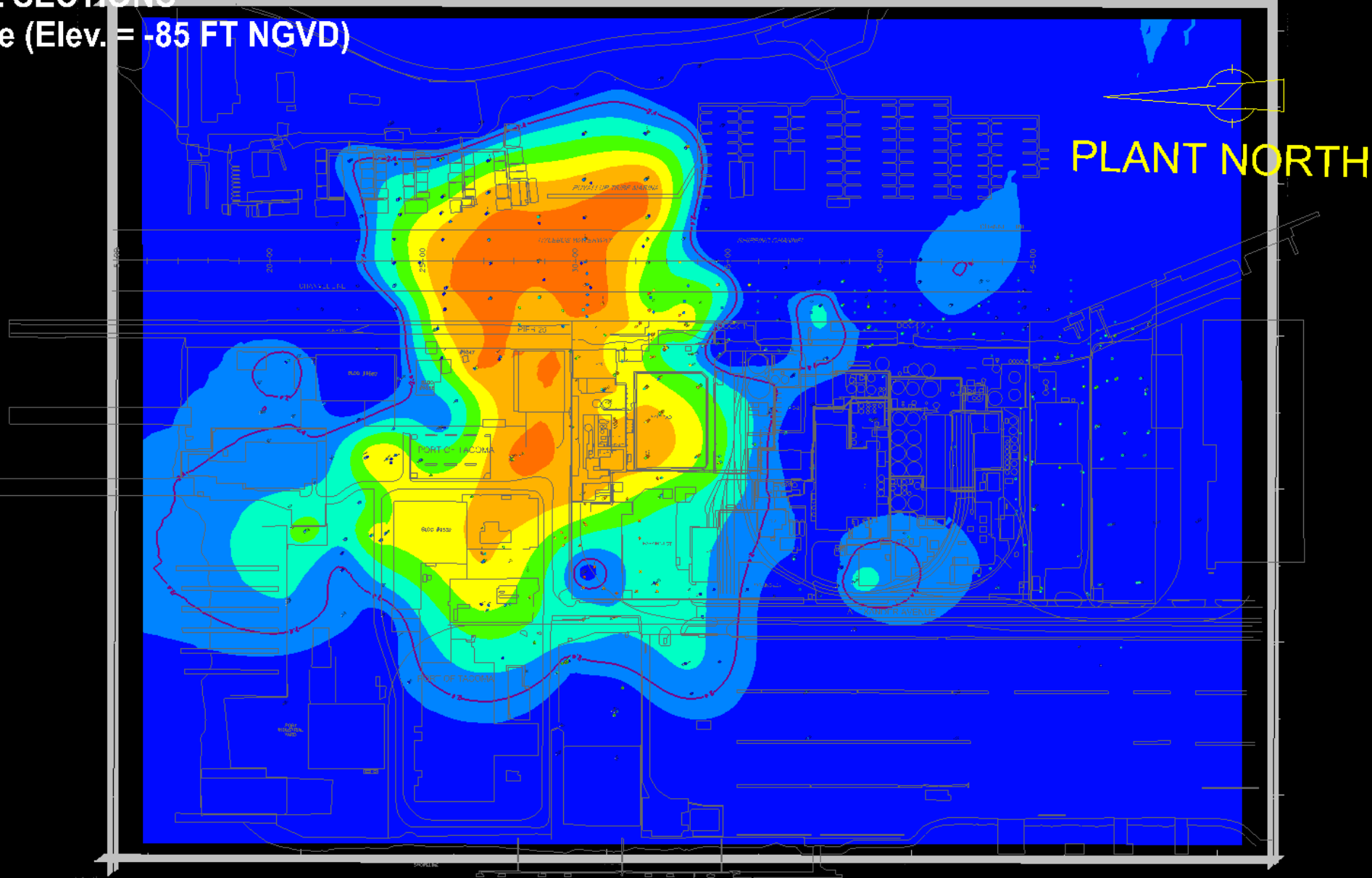
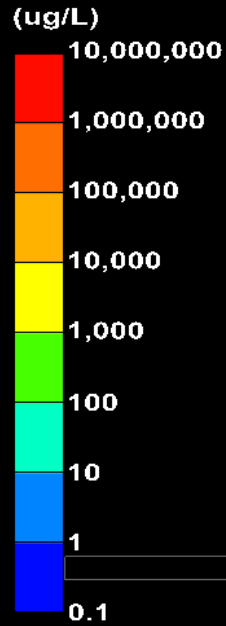
# SITE CHARACTERIZATION

Total CVOCs Comprehensive GW Plume (most recent data 2004-2013)

Occidental Chemical Corporation  
Tacoma, Washington  
2.5x Vertical Exaggeration

## HORIZONTAL SECTIONS

100-Foot Zone (Elev. = -85 FT NGVD)



# SITE CHARACTERIZATION

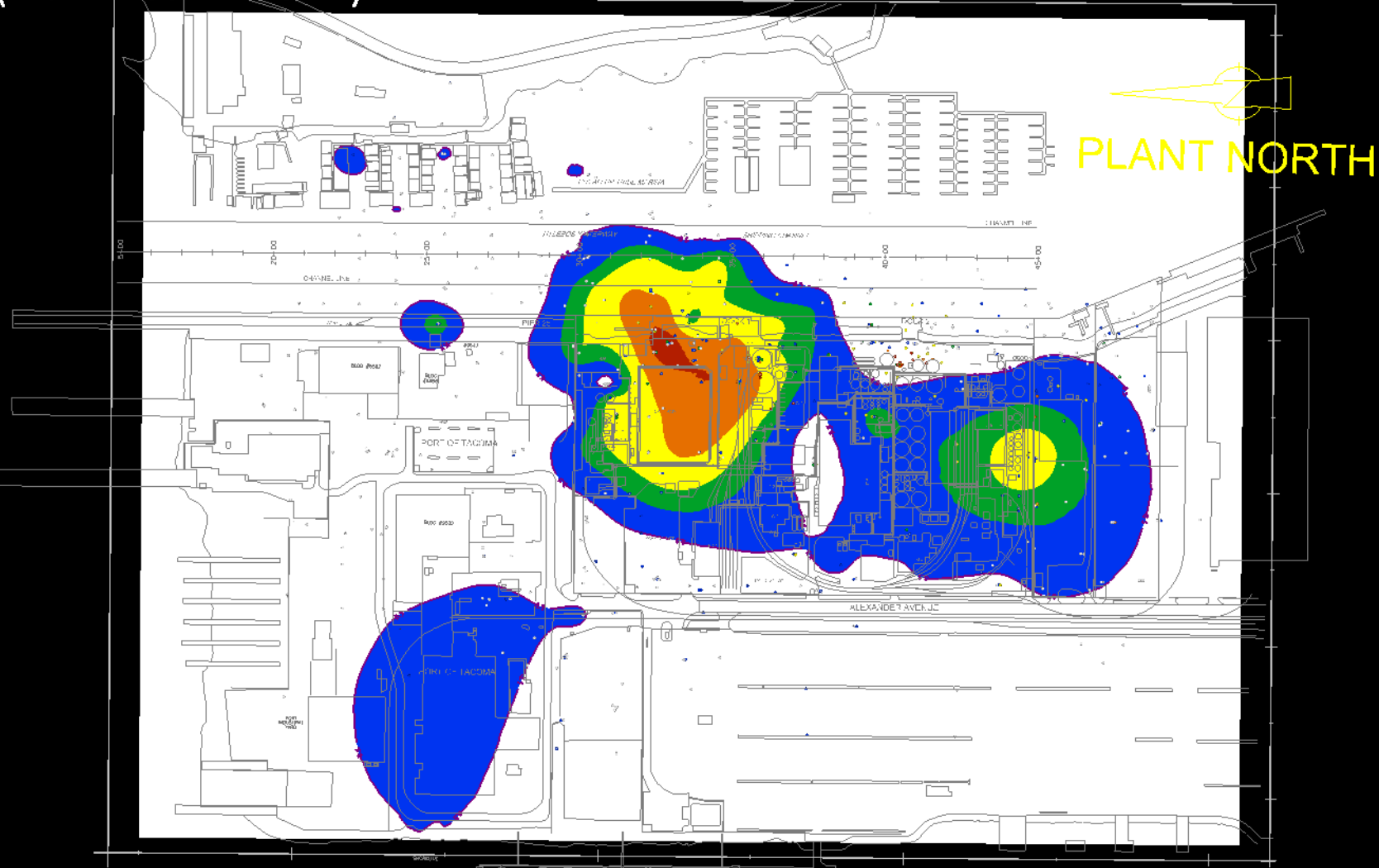
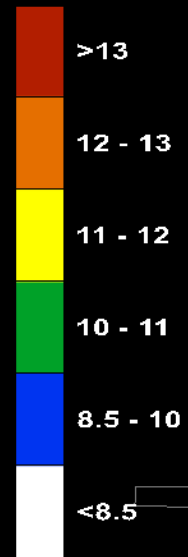
pH Comprehensive GW Plume (most recent data 2004-2013)

## HORIZONTAL SECTIONS

100-Foot Zone (Elev. = -85 FT NGVD)

Occidental Chemical Corporation  
Tacoma, Washington  
2.5x Vertical Exaggeration

SU





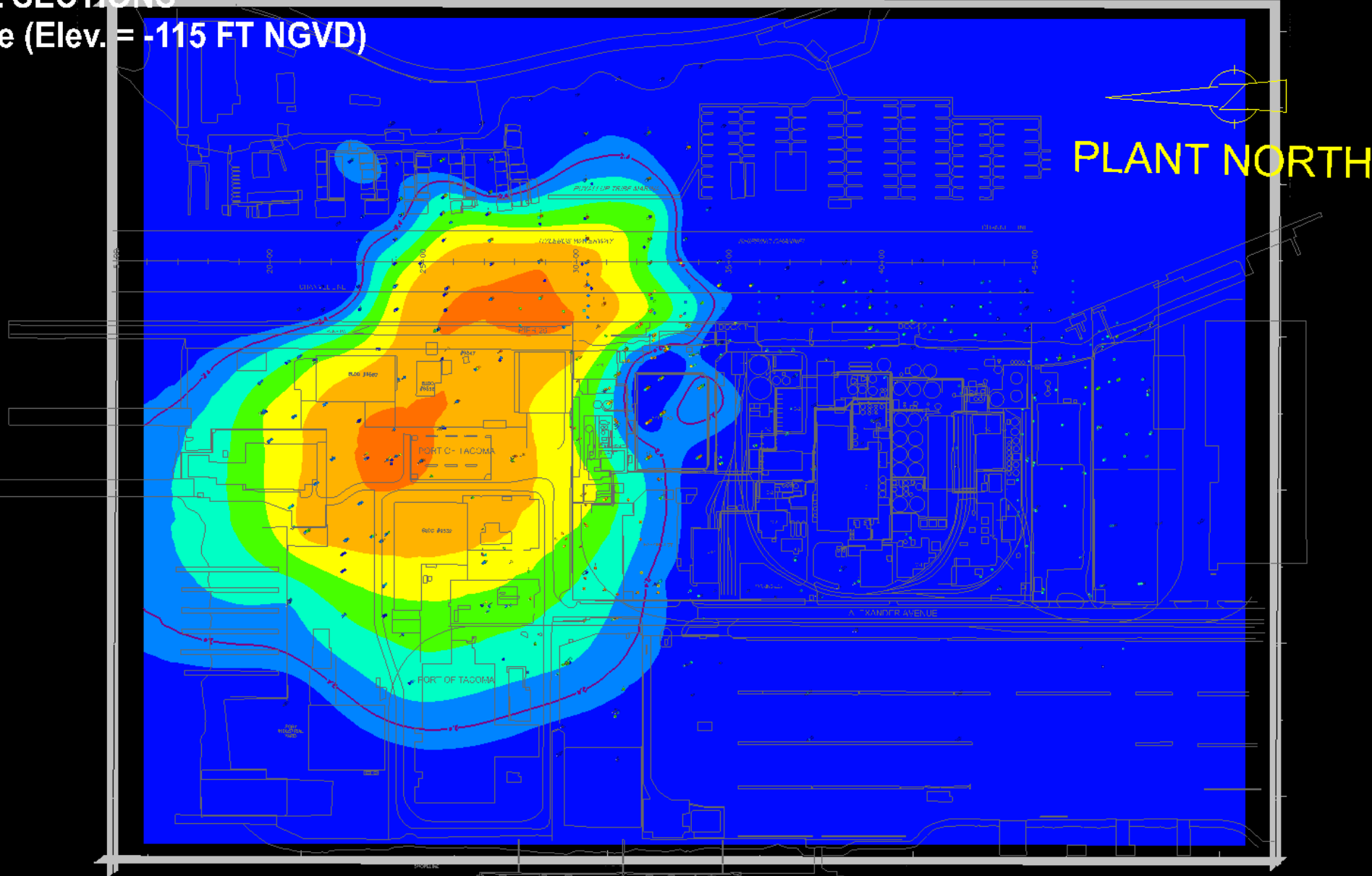
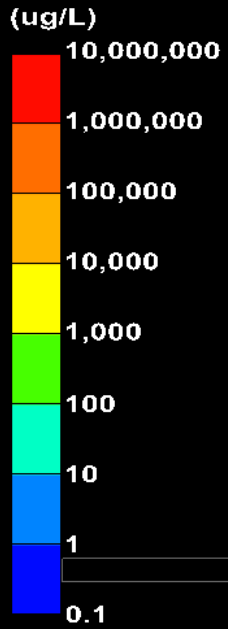
# SITE CHARACTERIZATION

Total CVOCs Comprehensive GW Plume (most recent data 2004-2013)

Occidental Chemical Corporation  
Tacoma, Washington  
2.5x Vertical Exaggeration

## HORIZONTAL SECTIONS

130-Foot Zone (Elev. = -115 FT NGVD)



# SITE CHARACTERIZATION

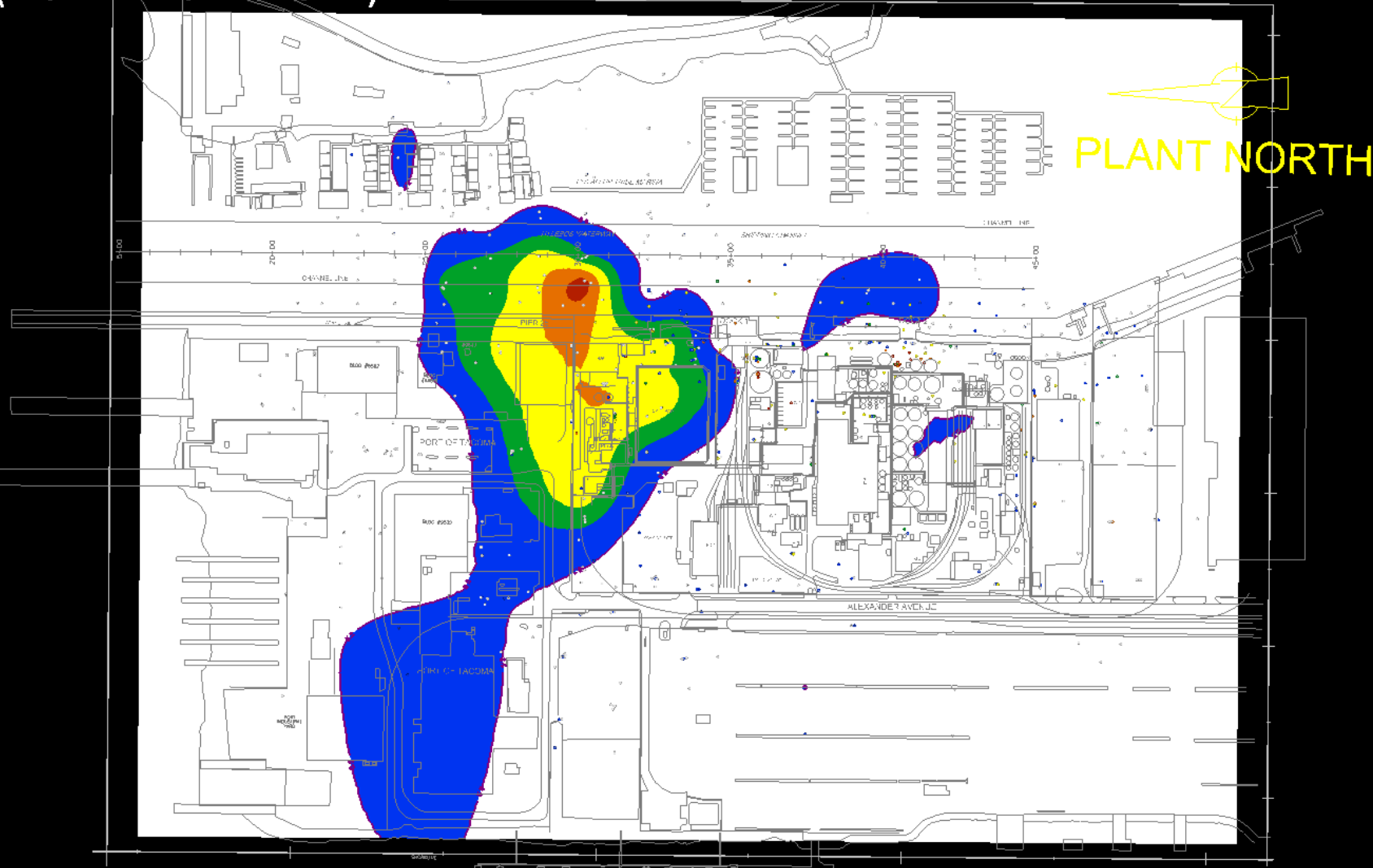
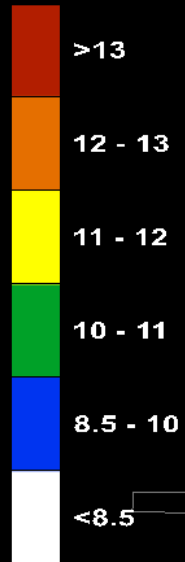
pH Comprehensive GW Plume (most recent data 2004-2013)

## HORIZONTAL SECTIONS

130-Foot Zone (Elev. = -115 FT NGVD)

Occidental Chemical Corporation  
Tacoma, Washington  
2.5x Vertical Exaggeration

SU



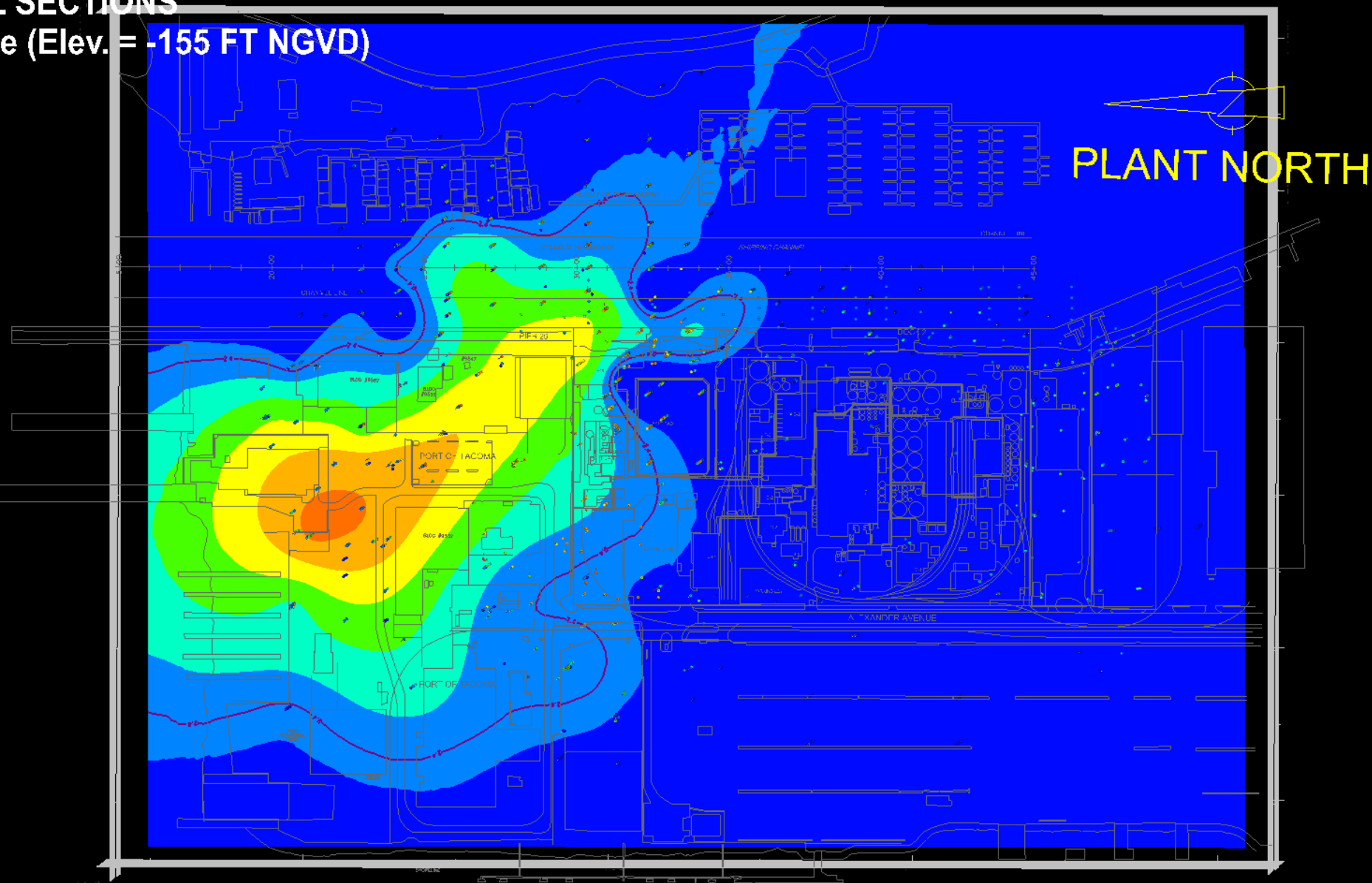
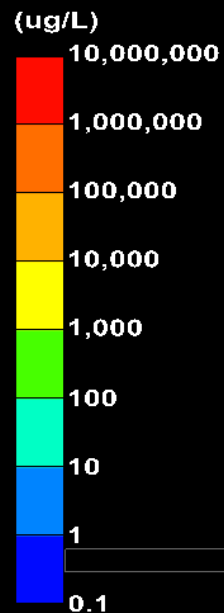
# SITE CHARACTERIZATION

Total CVOCs Comprehensive GW Plume (most recent data 2004-2013)

## HORIZONTAL SECTIONS

160-Foot Zone (Elev. = -155 FT NGVD)

Occidental Chemical Corporation  
Tacoma, Washington  
2.5x Vertical Exaggeration



# SITE CHARACTERIZATION

pH Comprehensive GW Plume (most recent data 2004-2013)

## HORIZONTAL SECTIONS

160-Foot Zone (Elev. = -155 FT NGVD)

Occidental Chemical Corporation  
Tacoma, Washington  
2.5x Vertical Exaggeration

SU

