

TRANSMITTAL

To: Washington State Department of Ecology Date: March 27, 2015
 Attn: Robin Harrover and Neal Hines Project No.: 0025164.120
 RE: Boeing Auburn Facility – Groundwater Concentration and Elevation Contour Figures, December 2014 and January 2015

Copies	Description
1 set	Figures of Groundwater Concentration from December 2014 and Elevation Contours From January 2015

Ms. Harrover and Mr. Hines:

Included are the Boeing Auburn groundwater concentration figures updated with the data from the December 2014 sampling event and groundwater elevation contour figures updated with the data from January 2015.

- Figure 1: Current Monitoring Well Network
- Figure 2: Water Table Zone TCE Concentrations Most Recent – December 2014
- Figure 3: Water Table Zone cis-1,2-DCE Concentrations Most Recent – December 2014
- Figure 4: Water Table Zone Vinyl Chloride Concentrations Most Recent – December 2014
- Figure 5: Shallow Zone (15-30 ft) TCE Concentrations Most Recent – December 2014
- Figure 6: Shallow Zone (15-30 ft) cis-1,2-DCE Concentrations Most Recent – December 2014
- Figure 7: Shallow Zone (15-30 ft) Vinyl Chloride Concentrations Most Recent – December 2014
- Figure 8: Intermediate Zone (40-60 ft) TCE Concentrations Most Recent – December 2014
- Figure 9: Intermediate Zone (40-60 ft) cis-1,2-DCE Concentrations Most Recent – December 2014
- Figure 10: Intermediate Zone (40-60 ft) Vinyl Chloride Concentrations Most Recent – December 2014
- Figure 11: Deep Zone (80-100 ft) TCE Concentrations Most Recent – December 2014
- Figure 12: Deep Zone (80-100 ft) cis-1,2-DCE Concentrations Most Recent – December 2014
- Figure 13: Deep Zone (80-100 ft) Vinyl Chloride Concentrations Most Recent – December 2014
- Figure 14: Shallow Zone (20-30 ft) Groundwater Elevation Contours January 2015
- Figure 15: Intermediate Zone (40-60 ft) Groundwater Elevation Contours January 2015
- Figure 16: Deep Zone (80-100 ft) Groundwater Elevation Contours January 2015

If you have any questions regarding these figures, or need any other information please do not hesitate to call Jennifer Wynkoop at (253) 284-4879 with any comments or questions.

LANDAU ASSOCIATES, INC.

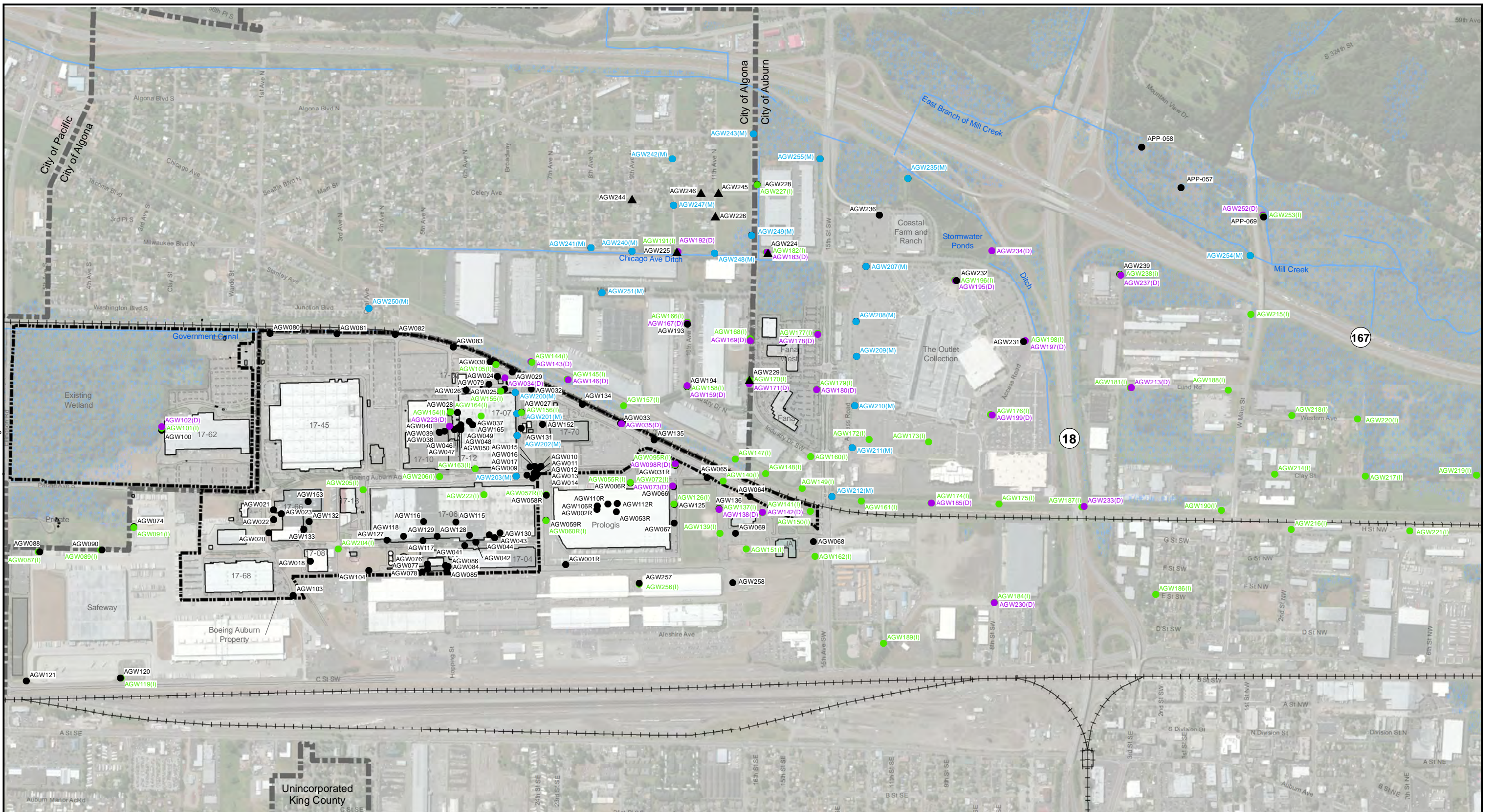


Jennifer W. Wynkoop
 Senior Associate
 JWW/SEF/bar

3/27/15 \\TACOMA3\Project\025164\C\2015\TransLtrsToECY\Elevation&ConcentrationFigures_Trans_27Mar15.docx

cc: James Bet, The Boeing Company (email only)
 Jim Swartz, The Boeing Company

G:\Projects\0251\6412011040_2014_Concentration_Contours\Round4\F01\MWNNetwork.mxd 3/27/2015 10:40:20 1983 StatePlane Washington North FIPS 4601 Feet

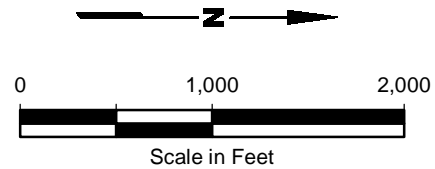


Notes

- Well designations beginning with APP are installed and owned by WSDOT.
- Black and white reproduction of this color original may reduce its effectiveness and lead to incorrect interpretation.

Legend

- ▲ Offsite Water Table Well
- Shallow Monitoring Well (2 to 30 ft BGS)
- (I) Intermediate Monitoring Well (40 to 60 ft BGS)
- (D) Deep Monitoring Well (80 to 100 ft BGS)
- (M) Multi-Level Well
- Wetland Areas
- Water Bodies
- Waterways

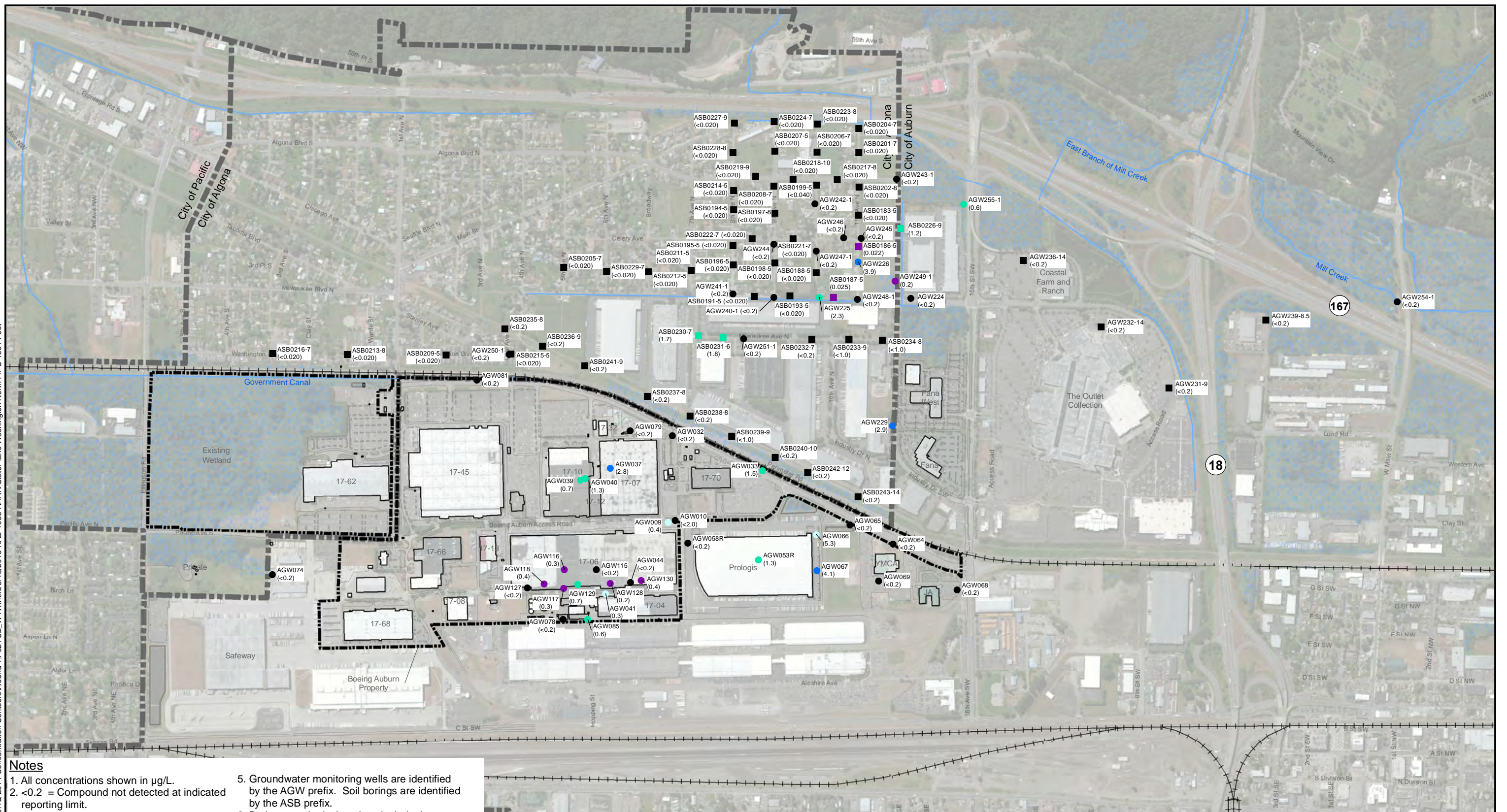


Base map source: Geometrix 2003; Aerial Photo Source: ESRI World Imagery; Parcel Data Source: King County GIS 2012

Boeing Auburn
Auburn, Washington

Current Monitoring Well Network

Figure
1



Notes

1. All concentrations shown in µg/L.
2. <0.2 = Compound not detected at indicated reporting limit.
3. Water table wells are screened across the water table. Borehole samples are collected from screens across the water table.
4. Monitoring well results are the most recent. Direct-push boring results are from April 2013 and Summer 2014. Borehole grab samples from monitoring wells were collected at time of drilling.
5. Groundwater monitoring wells are identified by the AGW prefix. Soil borings are identified by the ASB prefix.
6. Boring sample designations include the location name (e.g., ASB0207) followed by the depth (feet, below ground surface) at which the sample was collected (e.g., 7).
7. Multilevel wells have multiple channels. Channel designations are included in the well ID (e.g., AGW240-1). Channel 1 is screened across the water table.
8. Black and white reproduction of this color original may reduce its effectiveness and lead to incorrect interpretation.

Legend

- Water Table Well Location
- Water Table Zone Borehole Grab Sample Location
- TCE Detection (>5 µg/L)
- TCE Detection (>2.4-5 µg/L)
- TCE Detection (0.5-2.4 µg/L)
- TCE Detection (<0.5 µg/L)
- Non-Detect
- Waterways
- Wetland Areas
- Boeing Property
- City Limits

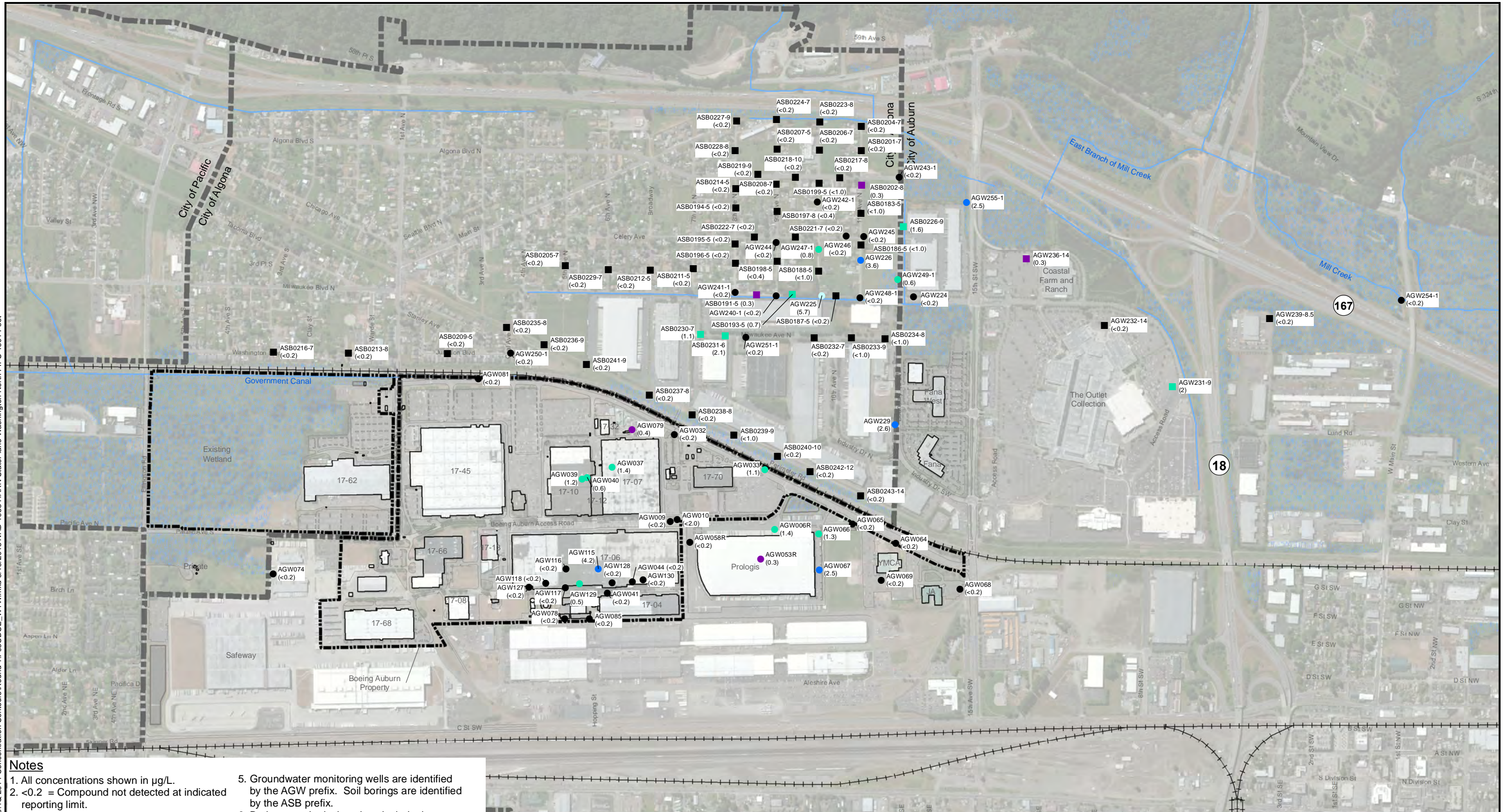


Base map source: Geometrix 2003; Aerial Photo Source: Esri World Imagery; Parcel Data Source: King County GIS 2013

Boeing Auburn
Auburn, Washington

**Water Table Zone
TCE Concentrations
Most Recent – December 2014**

Figure
2

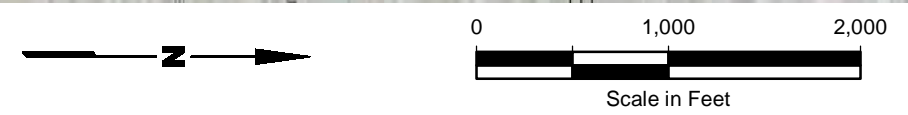


Notes

1. All concentrations shown in µg/L.
2. <0.2 = Compound not detected at indicated reporting limit.
3. Water table wells are screened across the water table. Borehole samples are collected from screens across the water table.
4. Monitoring well results are the most recent. Direct-push boring results are from April 2013 and Summer 2014. Borehole grab samples from monitoring wells were collected at time of drilling.
5. Groundwater monitoring wells are identified by the AGW prefix. Soil borings are identified by the ASB prefix.
6. Boring sample designations include the location name (e.g., ASB0207) followed by the depth (feet, below ground surface) at which the sample was collected (e.g., 7).
7. Multilevel wells have multiple channels. Channel designations are included in the well ID (e.g., AGW240-1). Channel 1 is screened across the water table.
8. Black and white reproduction of this color original may reduce its effectiveness and lead to incorrect interpretation.

Legend

- Water Table Well Location
- Water Table Zone Borehole Grab Sample Location
- cis-1,2-DCE Detection (>5 µg/L)
- cis-1,2-DCE Detection (>2.4-5 µg/L)
- cis-1,2-DCE Detection (0.5-2.4 µg/L)
- cis-1,2-DCE Detection (<0.5 µg/L)
- Non-Detect
- Waterways
- Wetland Areas
- Boeing Property
- City Limits



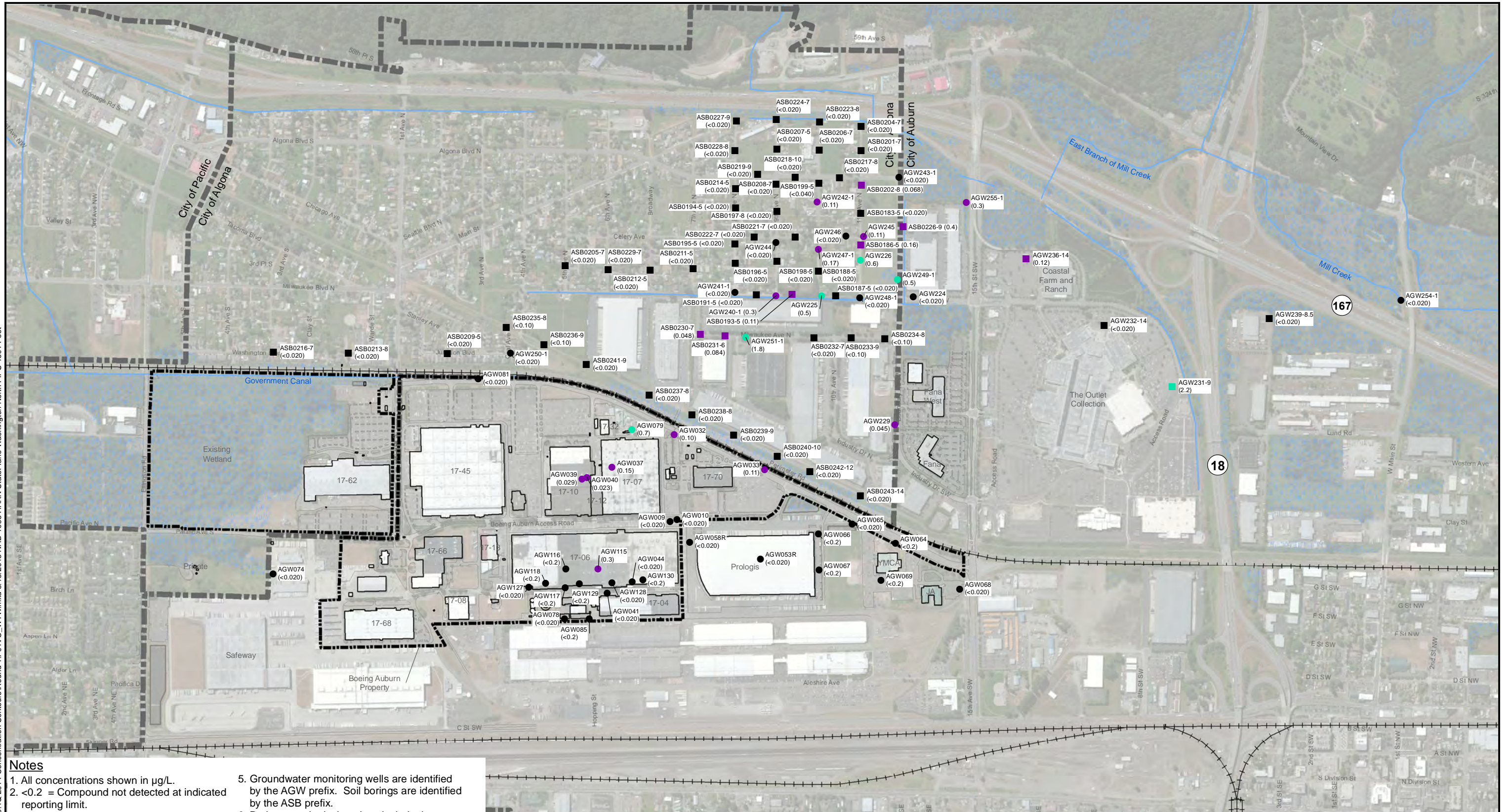
Base map source: Geometrix 2003; Aerial Photo Source: Esri World Imagery; Parcel Data Source: King County GIS 2013

Boeing Auburn
Auburn, Washington

**Water Table Zone
cis-1,2-DCE Concentrations
Most Recent – December 2014**

Figure
3

G:\Projects\0251\6412011040_2014_Concentration_Contours\Round4\F04VC_WTW.mxd 3/18/2015 NAD 1983 HARN StatePlane Washington North FIPS 4601 Feet

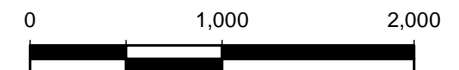
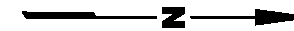


Notes

1. All concentrations shown in µg/L.
2. <0.2 = Compound not detected at indicated reporting limit.
3. Water table wells are screened across the water table. Borehole samples are collected from screens across the water table.
4. Monitoring well results are the most recent. Direct-push boring results are from April 2013 and Summer 2014. Borehole grab samples from monitoring wells were collected at time of drilling.
5. Groundwater monitoring wells are identified by the AGW prefix. Soil borings are identified by the ASB prefix.
6. Boring sample designations include the location name (e.g., ASB0207) followed by the depth (feet, below ground surface) at which the sample was collected (e.g., 7).
7. Multilevel wells have multiple channels. Channel designations are included in the well ID (e.g., AGW240-1). Channel 1 is screened across the water table.
8. Black and white reproduction of this color original may reduce its effectiveness and lead to incorrect interpretation.

Legend

- Water Table Well Location
- Water Table Zone Borehole Grab Sample Location
- Vinyl Chloride Detection (>5 µg/L)
- Vinyl Chloride Detection (>2.4-5 µg/L)
- Vinyl Chloride Detection (0.5-2.4 µg/L)
- Vinyl Chloride Detection (<0.5 µg/L)
- Non-Detect
- Waterways
- Wetland Areas
- Boeing Property
- City Limits

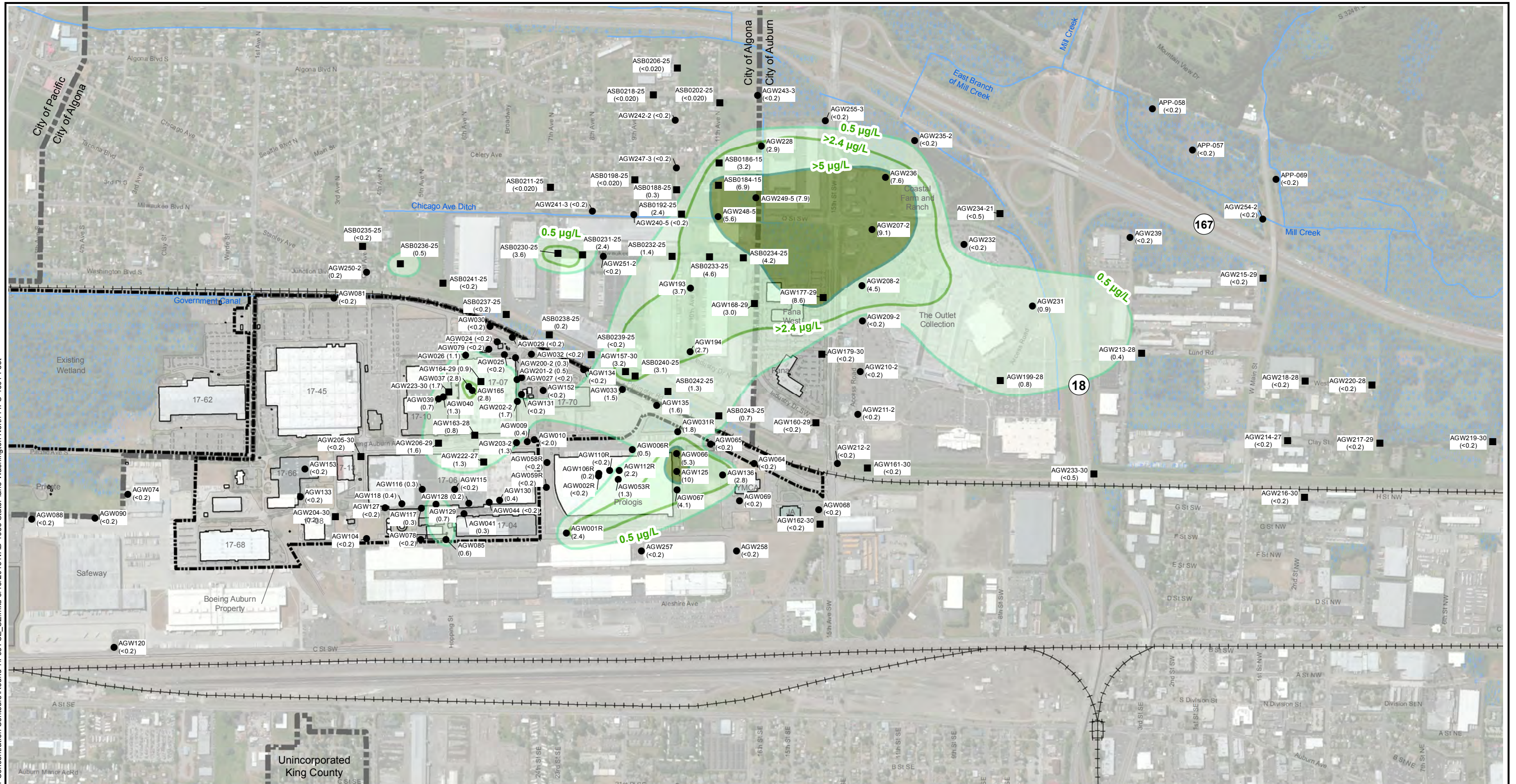


Base map source: Geometrix 2003; Aerial Photo Source: Esri World Imagery; Parcel Data Source: King County GIS 2013

Boeing Auburn Auburn, Washington	Water Table Zone Vinyl Chloride Concentrations Most Recent – December 2014	Figure 4
-------------------------------------	---	--------------------



G:\Projects\0251\6412011040_2014_ConcentrationContours\Round4\F05\TCE_SZ.mxd 3/18/2015 NAD 1983 StatePlane Washington North FIPS 4601 Feet



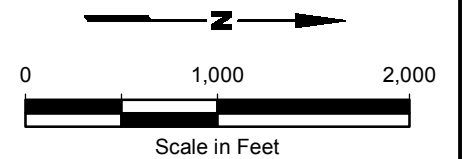
Notes

1. All concentrations shown in µg/L.
2. <0.2 = Compound not detected at indicated reporting limit.
3. Monitoring well results are the most recent. Direct-push boring results are from April 2013 and Summer 2014. Borehole grab samples from monitoring wells were collected at time of drilling.

4. Groundwater monitoring wells are identified by the AGW prefix. Soil borings are identified by the ASB prefix.
5. Boring sample designations include the location name (e.g., ASB0207) followed by the depth (feet, below ground surface) at which the sample was collected (e.g., 7).
6. Multilevel wells have multiple channels. Channel designations are included in the well ID (e.g., AGW208-2).
7. Black and white reproduction of this color original may reduce its effectiveness and lead to incorrect interpretation.

Legend

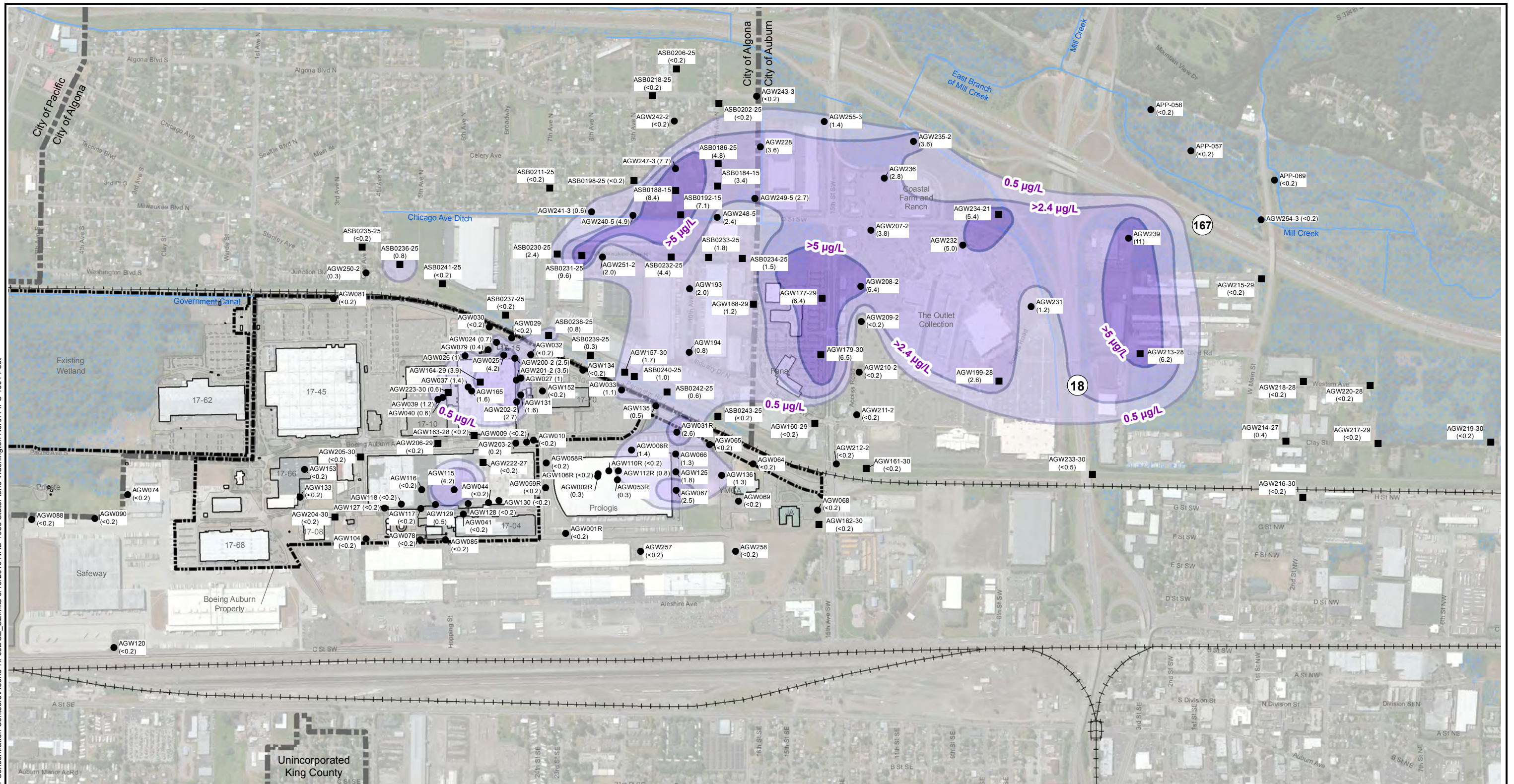
- Monitoring Well Location
- Borehole Grab Sample Location
- TCE Contour (>5.0 µg/L)
- TCE Contour (>2.4 µg/L)
- TCE Contour (≥0.5 µg/L)
- Waterways
- Wetland Areas
- Boeing Property
- City Limits



Base map source: Geometrix 2003; Aerial Photo Source: Esri World Imagery; Parcel Data Source: King County GIS 2013

Boeing Auburn Auburn, Washington	Shallow Zone (15-30 ft) TCE Concentrations Most Recent – December 2014	Figure 5
-------------------------------------	---	--------------------

G:\Projects\025164120111040_2014_ConcentrationContours\Round4\F06DOE_SZ.mxd 3/18/2015 NAD 1983 StatePlane Washington North FIPS 4601 Feet



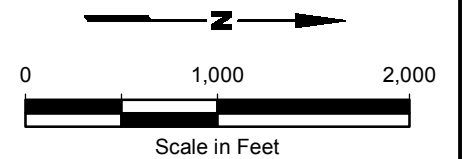
Notes

1. All concentrations shown in µg/L.
2. <0.2 = Compound not detected at indicated reporting limit.
3. Monitoring well results are the most recent. Direct-push boring results are from April 2013 and Summer 2014. Borehole grab samples from monitoring wells were collected at time of drilling.

4. Groundwater monitoring wells are identified by the AGW prefix. Soil borings are identified by the ASB prefix.
5. Boring sample designations include the location name (e.g., ASB0207) followed by the depth (feet, below ground surface) at which the sample was collected (e.g., 7).
6. Multilevel wells have multiple channels. Channel designations are included in the well ID (e.g., AGW208-2).
7. Black and white reproduction of this color original may reduce its effectiveness and lead to incorrect interpretation.

Legend

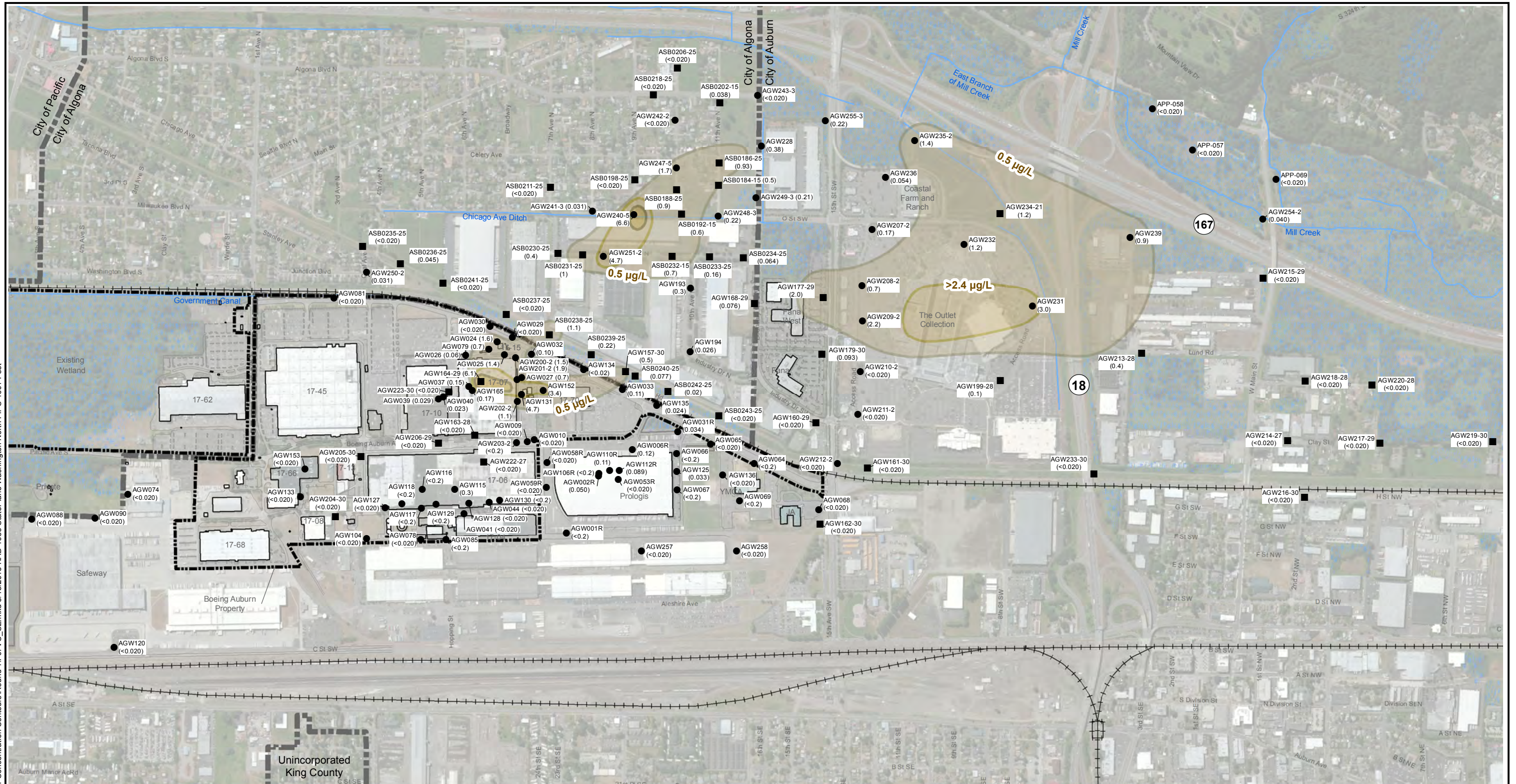
- Monitoring Well Location
- Borehole Grab Sample Location
- cis-1,2-DCE Contour (>5.0 µg/L)
- cis-1,2-DCE Contour (>2.4 µg/L)
- cis-1,2-DCE Contour (≥ 0.5 µg/L)
- Waterways
- Wetland Areas
- Boeing Property
- City Limits



Base map source: Geometrix 2003; Aerial Photo Source: Esri World Imagery; Parcel Data Source: King County GIS 2013

Boeing Auburn Auburn, Washington	Shallow Zone (15-30 ft) cis-1,2-DCE Concentrations Most Recent – December 2014	Figure 6
-------------------------------------	---	--------------------

G:\Projects\025164120\11040_2014_ConcentrationContours\Round4\F07VC_SZ_mxd 3/18/2015 NAD 1983 StatePlane Washington North FIPS 4601 Feet



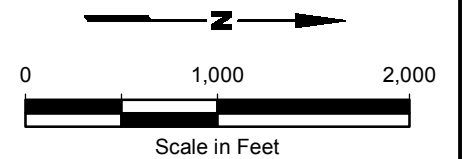
Notes

1. All concentrations shown in µg/L.
2. <0.2 = Compound not detected at indicated reporting limit.
3. Monitoring well results are the most recent. Direct-push boring results are from April 2013 and Summer 2014. Borehole grab samples from monitoring wells were collected at time of drilling.

4. Groundwater monitoring wells are identified by the AGW prefix. Soil borings are identified by the ASB prefix.
5. Boring sample designations include the location name (e.g., ASB0207) followed by the depth (feet, below ground surface) at which the sample was collected (e.g., 7).
6. Multilevel wells have multiple channels. Channel designations are included in the well ID (e.g., AGW208-2).
7. Black and white reproduction of this color original may reduce its effectiveness and lead to incorrect interpretation.

Legend

- Monitoring Well Location
- Borehole Grab Sample Location
- Vinyl Chloride Contour (>5.0 µg/L)
- Vinyl Chloride Contour (>2.4 µg/L)
- Vinyl Chloride Contour (≥0.5 µg/L)
- Waterways
- Wetland Areas
- Boeing Property
- City Limits



Base map source: Geometrix 2003; Aerial Photo Source: Esri World Imagery; Parcel Data Source: King County GIS 2013

Boeing Auburn
Auburn, Washington

**Shallow Zone (15-30 ft)
Vinyl Chloride Concentrations
Most Recent – December 2014**

Figure
7

G:\Projects\025164120111040_2014_ConcentrationContours\Round4\F08TCE_IZ_mxd 3/18/2015 NAD 1983 StatePlane Washington North FIPS 4601 Feet



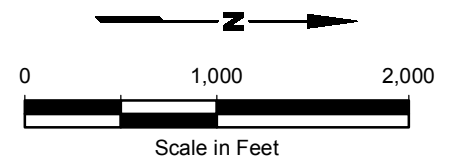
Notes

1. All concentrations shown in µg/L.
2. <0.2 = Compound not detected at indicated reporting limit.
3. Monitoring well results are the most recent. Direct-push boring results are from April 2013 and Summer 2014. Borehole grab samples from monitoring wells were collected at time of drilling.

4. Groundwater monitoring wells are identified by the AGW prefix. Soil borings are identified by the ASB prefix.
5. Boring sample designations include the location name (e.g., ASB0207) followed by the depth (feet, below ground surface) at which the sample was collected (e.g., 7).
6. Multilevel wells have multiple channels. Channel designations are included in the well ID (e.g., AGW208-2).
7. Black and white reproduction of this color original may reduce its effectiveness and lead to incorrect interpretation.

Legend

- Monitoring Well Location
- Borehole Grab Sample Location
- TCE Contour (>5.0 µg/L)
- TCE Contour (>2.4 µg/L)
- TCE Contour (≥0.5 µg/L)
- Waterways
- Wetland Areas
- Boeing Property
- City Limits

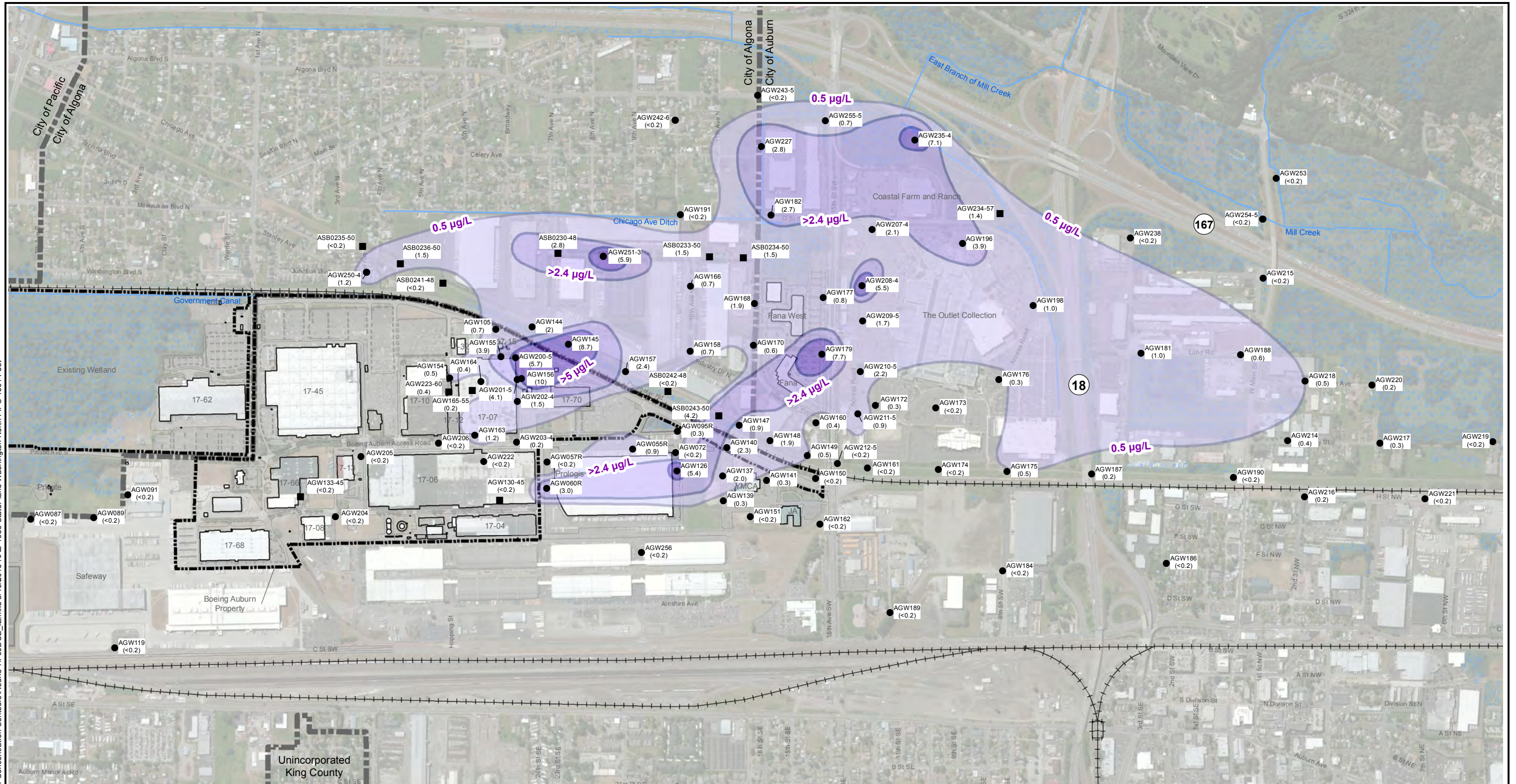


Base map source: Geometrix 2003; Aerial Photo Source: Esri World Imagery; Parcel Data Source: King County GIS 2013

Boeing Auburn Auburn, Washington	Intermediate Zone (40-60 ft) TCE Concentrations Most Recent – December 2014	Figure 8
-------------------------------------	--	--------------------



G:\Projects\025164120111040_2014_ConcentrationContours\Round4\F09DOE_IZ_mxd 3/18/2015 NAD 1983 StatePlane Washington North FIPS 4601 Feet



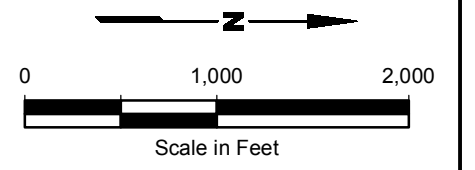
Notes

1. All concentrations shown in µg/L.
2. <0.2 = Compound not detected at indicated reporting limit.
3. Monitoring well results are the most recent. Direct-push boring results are from April 2013 and Summer 2014. Borehole grab samples from monitoring wells were collected at time of drilling.

4. Groundwater monitoring wells are identified by the AGW prefix. Soil borings are identified by the ASB prefix.
5. Boring sample designations include the location name (e.g., ASB0207) followed by the depth (feet, below ground surface) at which the sample was collected (e.g., 7).
6. Multilevel wells have multiple channels. Channel designations are included in the well ID (e.g., AGW208-2).
7. Black and white reproduction of this color original may reduce its effectiveness and lead to incorrect interpretation.

Legend

- Monitoring Well Location
- Borehole Grab Sample Location
- cis-1,2-DCE Contour (>5.0 µg/L)
- cis-1,2-DCE Contour (>2.4 µg/L)
- cis-1,2-DCE Contour (≥0.5 µg/L)
- Waterways
- ▨ Wetland Areas
- Boeing Property
- City Limits

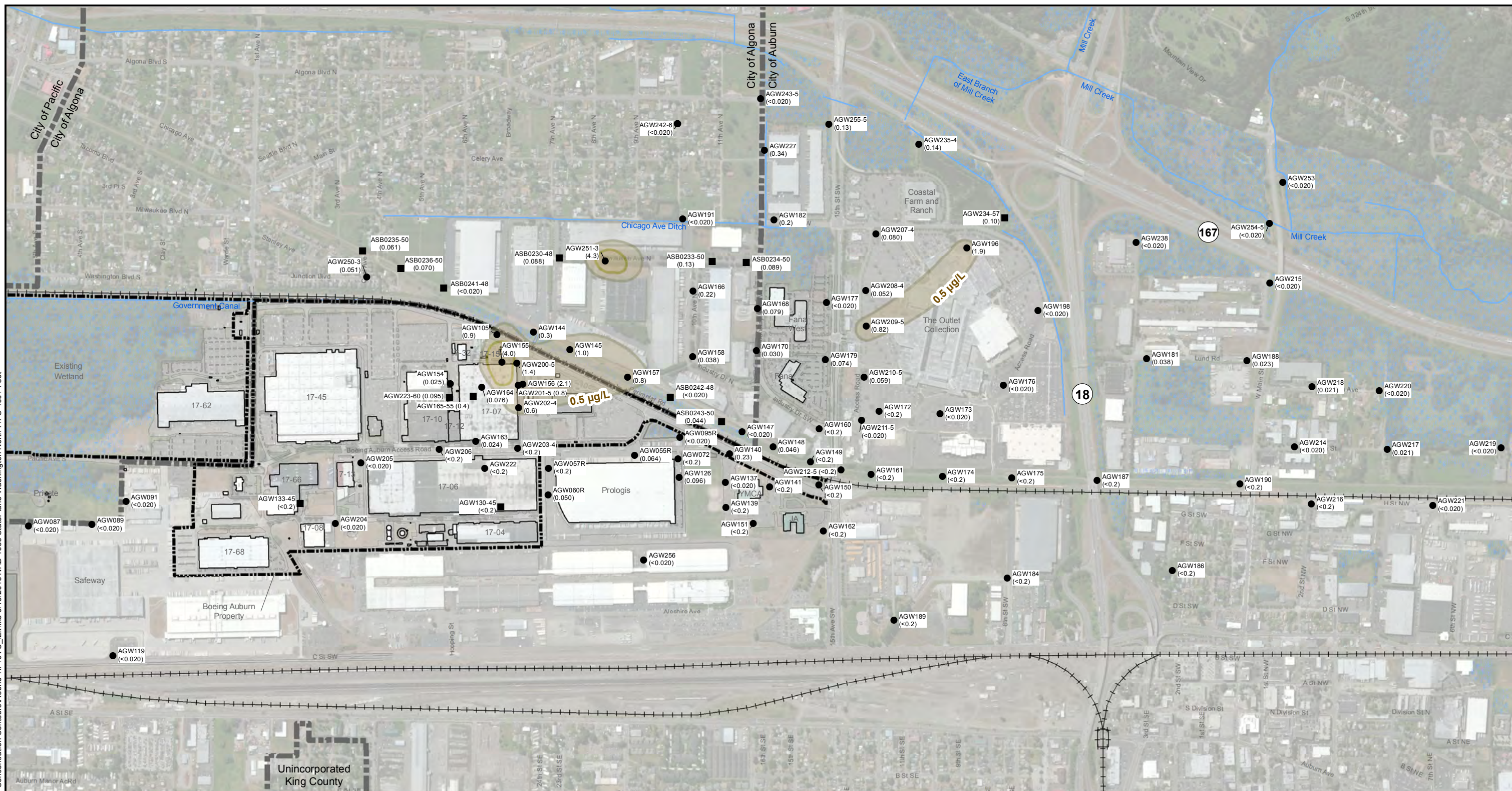


Base map source: Geometrix 2003; Aerial Photo Source: Esri World Imagery; Parcel Data Source: King County GIS 2013

Boeing Auburn Auburn, Washington	Intermediate Zone (40-60 ft) cis-1,2-DCE Concentrations Most Recent – December 2014	Figure 9
-------------------------------------	--	--------------------



G:\Projects\025164120111040_2014_ConcentrationContours\Round4\F10VC_I_Z.mxd 3/18/2015 NAD 1983 StatePlane Washington North FIPS 4801 Feet



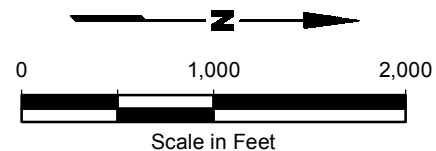
Notes

1. All concentrations shown in µg/L.
2. <0.2 = Compound not detected at indicated reporting limit.
3. Monitoring well results are the most recent. Direct-push boring results are from April 2013 and Summer 2014. Borehole grab samples from monitoring wells were collected at time of drilling.

4. Groundwater monitoring wells are identified by the AGW prefix. Soil borings are identified by the ASB prefix.
5. Boring sample designations include the location name (e.g., ASB0207) followed by the depth (feet, below ground surface) at which the sample was collected (e.g., 7).
6. Multilevel wells have multiple channels. Channel designations are included in the well ID (e.g., AGW208-2).
7. Black and white reproduction of this color original may reduce its effectiveness and lead to incorrect interpretation.

Legend

- Monitoring Well Location
- Borehole Grab Sample Location
- Vinyl Chloride Contour (>5.0 µg/L)
- Vinyl Chloride Contour (>2.4 µg/L)
- Vinyl Chloride Contour (≥0.5 µg/L)
- Waterways
- Wetland Areas
- Boeing Property
- City Limits



Base map source: Geometrix 2003; Aerial Photo Source: Esri World Imagery; Parcel Data Source: King County GIS 2013

Boeing Auburn
Auburn, Washington

**Intermediate Zone (40-60 ft)
Vinyl Chloride Concentrations
Most Recent – December 2014**

Figure
10

G:\Projects\0251\64120110\40_2014_ConcentrationContours\Round4\F11TCE_DZ.mxd 3/18/2015 NAD 1983 StatePlane Washington North FIPS 4601 Feet



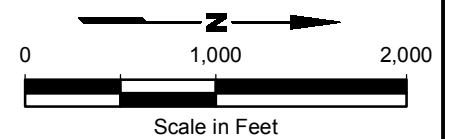
Notes

1. All concentrations shown in µg/L.
2. <0.2 = Compound not detected at indicated reporting limit.
3. Monitoring well results are the most recent. Direct-push boring results are from April 2013 and Summer 2014. Borehole grab samples from monitoring wells were collected at time of drilling.

4. Groundwater monitoring wells are identified by the AGW prefix. Soil borings are identified by the ASB prefix.
5. Boring sample designations include the location name (e.g., ASB0207) followed by the depth (feet, below ground surface) at which the sample was collected (e.g., 7).
6. Multilevel wells have multiple channels. Channel designations are included in the well ID (e.g., AGW208-2).
7. Black and white reproduction of this color original may reduce its effectiveness and lead to incorrect interpretation.

Legend

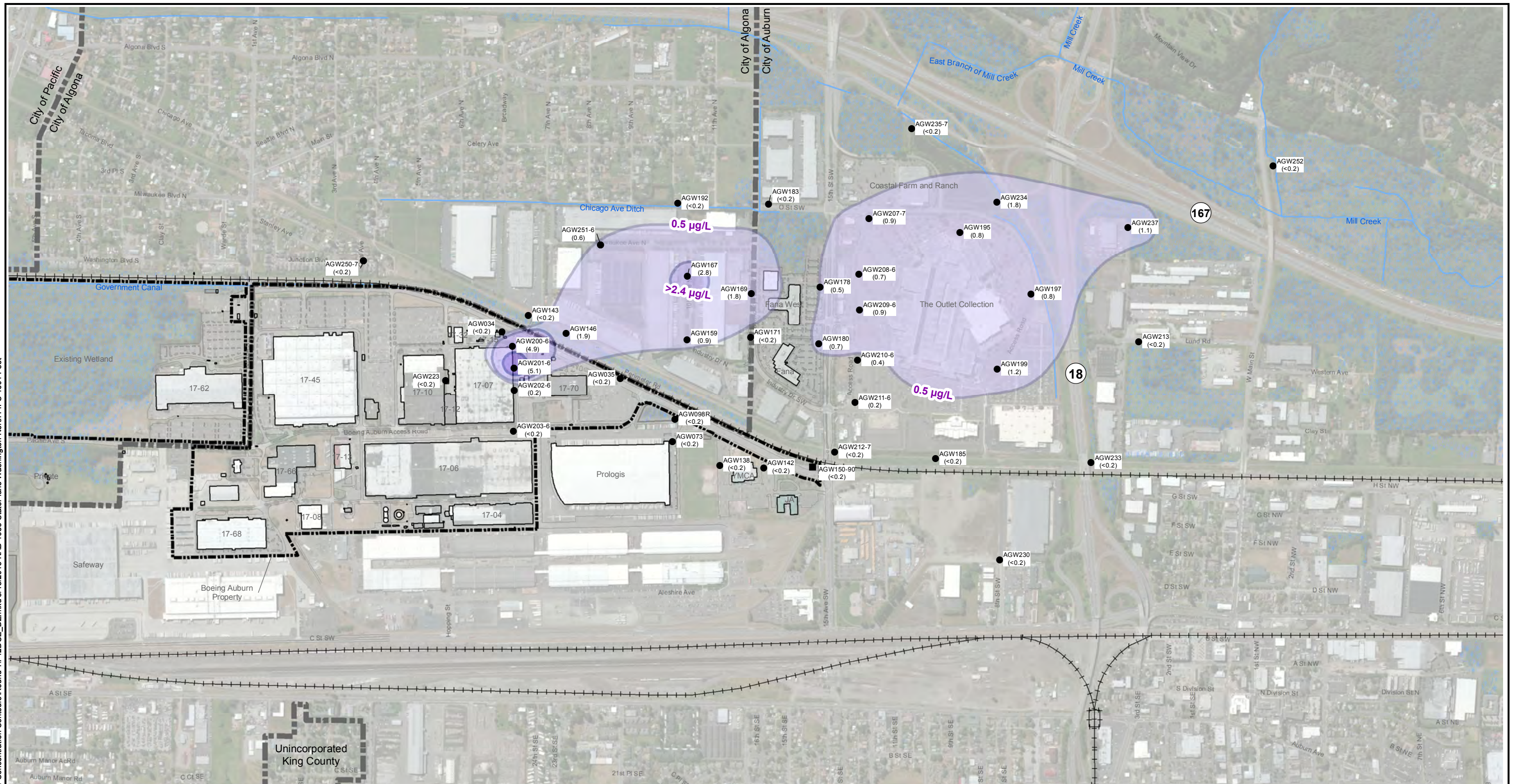
- Monitoring Well Location
- Borehole Grab Sample Location
- TCE Contour (>5.0 µg/L)
- TCE Contour (>2.4 µg/L)
- TCE Contour (≥0.5 µg/L)
- Waterways
- Wetland Areas
- Boeing Property
- City Limits



Base map source: Geometrix 2003; Aerial Photo Source: Esri World Imagery; Parcel Data Source: King County GIS 2013

Boeing Auburn Auburn, Washington	Deep Zone (80-100 ft) TCE Concentrations Most Recent – December 2014	Figure 11
-------------------------------------	---	---------------------

G:\Projects\0251\6412011040_2014_ConcentrationContours\Round4\F12DOE_DZ.mxd 3/18/2015 NAD 1983 StatePlane Washington North FIPS 4601 Feet



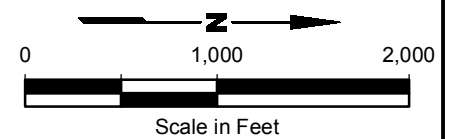
Notes

1. All concentrations shown in µg/L.
2. <0.2 = Compound not detected at indicated reporting limit.
3. Monitoring well results are the most recent. Direct-push boring results are from April 2013 and Summer 2014. Borehole grab samples from monitoring wells were collected at time of drilling.

4. Groundwater monitoring wells are identified by the AGW prefix. Soil borings are identified by the ASB prefix.
5. Boring sample designations include the location name (e.g., ASB0207) followed by the depth (feet, below ground surface) at which the sample was collected (e.g., 7).
6. Multilevel wells have multiple channels. Channel designations are included in the well ID (e.g., AGW208-2).
7. Black and white reproduction of this color original may reduce its effectiveness and lead to incorrect interpretation.

Legend

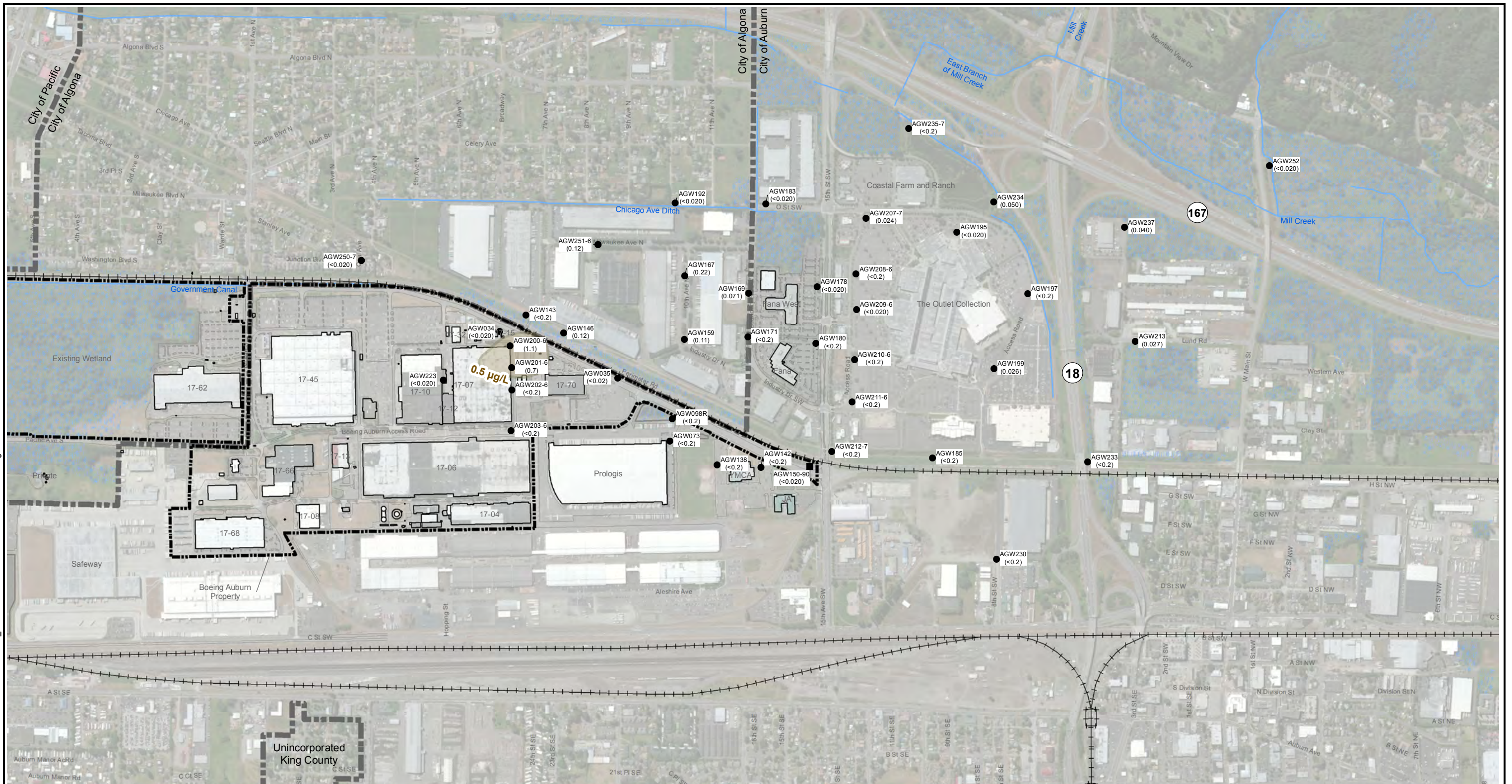
- Monitoring Well Location
- Borehole Grab Sample Location
- cis-1,2-DCE Contour (>5.0 µg/L)
- cis-1,2-DCE Contour (>2.4 µg/L)
- cis-1,2-DCE Contour (≥0.5 µg/L)
- Waterways
- Wetland Areas
- Boeing Property
- City Limits



Base map source: Geometrix 2003; Aerial Photo Source: Esri World Imagery; Parcel Data Source: King County GIS 2013

Boeing Auburn Auburn, Washington	Deep Zone (80-100 ft) cis-1,2-DCE Concentrations Most Recent – December 2014	Figure 12
-------------------------------------	---	---------------------

G:\Projects\025164120111040_2014_ConcentrationContours\Round4\F13VC_DZ_mxd 3/18/2015 NAD_1983 StatePlane Washington North FIPS 4601 Feet



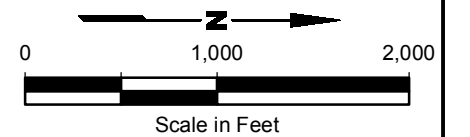
Notes

1. All concentrations shown in µg/L.
2. <0.2 = Compound not detected at indicated reporting limit.
3. Monitoring well results are the most recent. Direct-push boring results are from April 2013 and Summer 2014. Borehole grab samples from monitoring wells were collected at time of drilling.

4. Groundwater monitoring wells are identified by the AGW prefix. Soil borings are identified by the ASB prefix.
5. Boring sample designations include the location name (e.g., ASB0207) followed by the depth (feet, below ground surface) at which the sample was collected (e.g., 7).
6. Multilevel wells have multiple channels. Channel designations are included in the well ID (e.g., AGW208-2).
7. Black and white reproduction of this color original may reduce its effectiveness and lead to incorrect interpretation.

Legend

- Monitoring Well Location
- Borehole Grab Sample Location
- Vinyl Chloride Contour (>5.0 µg/L)
- Vinyl Chloride Contour (>2.4 µg/L)
- Vinyl Chloride Contour (≥0.5 µg/L)
- Waterways
- Wetland Areas
- Boeing Property
- City Limits



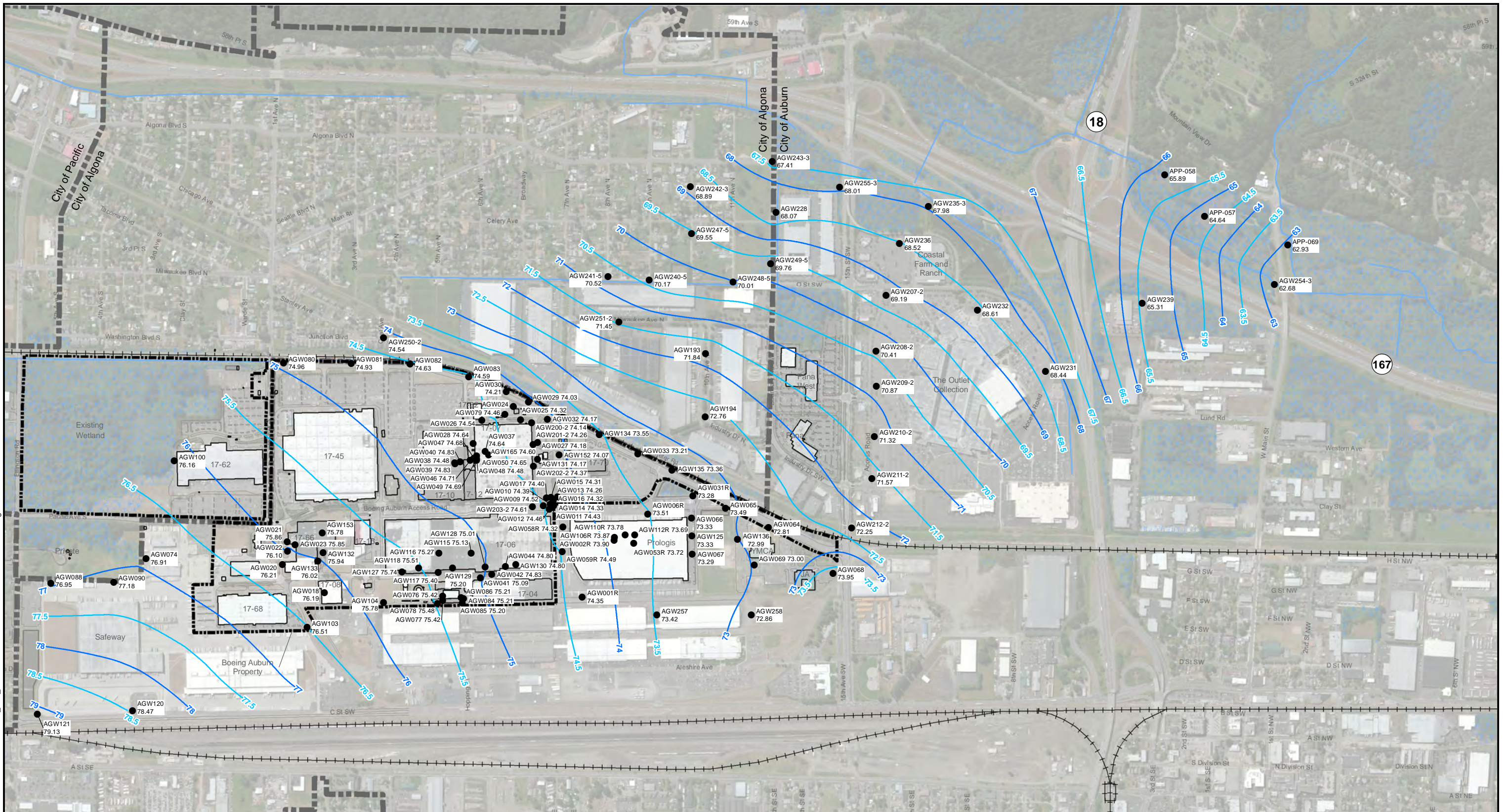
Base map source: Geometrix 2003; Aerial Photo Source: Esri World Imagery; Parcel Data Source: King County GIS 2013

Boeing Auburn
Auburn, Washington

**Deep Zone (80-100 ft)
Vinyl Chloride Concentrations
Most Recent – December 2014**

Figure
13

G:\Projects\0251\6412011010_2015 GW_SZ.mxd 3/27/2015 NAD 1983 StatePlane Washington North FIPS 4601 Feet



- Legend**
- AGW121 Monitoring Well Designation
 - 79.13 Groundwater Elevation (ft, MSL)
 - 72 Groundwater Elevation Contours
 - 72.5 Groundwater Elevation Contours
 - Boeing Property
 - Waterway
 - Wetland Area
 - City Limits

- Notes**
1. All water level data in ft, MSL. Data collected in January 2015.
 2. Wells without a water level were inaccessible or had anomalous data and was removed from the contour map.
 3. Multilevel wells have multiple channels. Channel designations are included in the well ID (ex: AGW208-2). Groundwater elevations listed are for the channel closest to 30 ft below ground surface.
 4. Wells with APP designation are owned by WSDOT.
 5. Black and white reproduction of this color original may reduce its effectiveness and lead to incorrect interpretation.

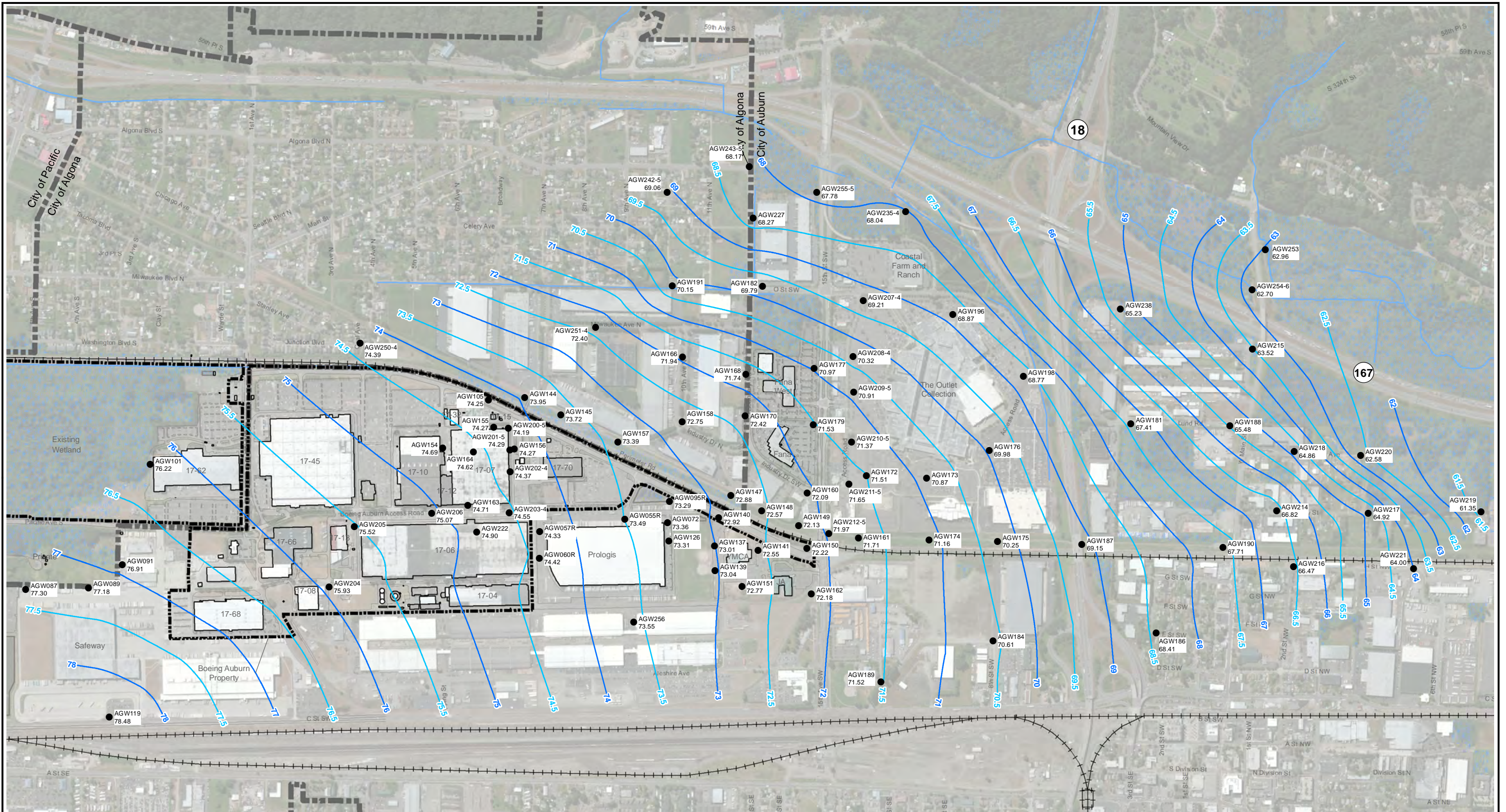
0 1,000 2,000
Scale in Feet

Base map source: Geometrix 2003; Aerial Photo Source: Esri World Imagery; Parcel Data Source: King County GIS 2013

Boeing Auburn Auburn, Washington	Shallow Zone (20-30 ft) Groundwater Elevation Contours January 2015	Figure 14
-------------------------------------	--	---------------------



G:\Projects\02516412011010_2015 GW_IZ_mxd\3/27/2015 NAD 1983 StatePlane Washington North FIPS 4601 Feet

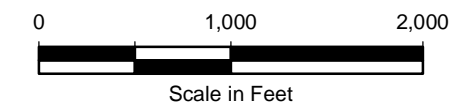
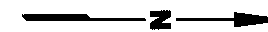


Legend

- AGW119 Monitoring Well Designation
- 78.48 Groundwater Elevation (ft, MSL)
- 72 Groundwater Elevation Contours
- 72.5 Groundwater Elevation Contours
- Boeing Property
- Waterway
- Wetland Area
- City Limits

Notes

1. All water level data in ft, MSL. Data collected in January 2015.
2. Multilevel wells have multiple channels. Channel designations are included in the well ID (ex: AGW208-2).
3. Black and white reproduction of this color original may reduce its effectiveness and lead to incorrect interpretation.



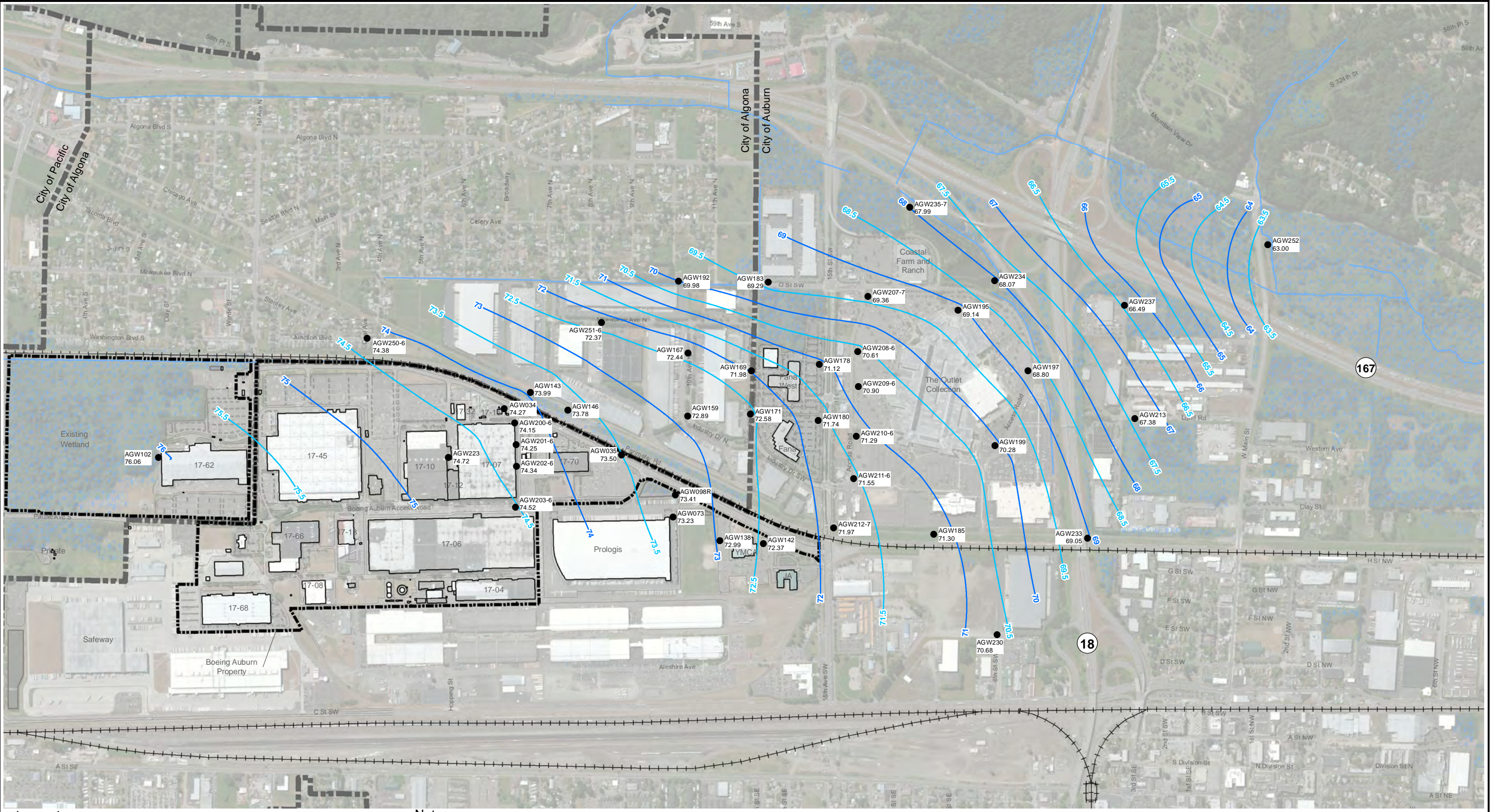
Base map source: Geometrix 2003; Aerial Photo Source: Esri World Imagery; Parcel Data Source: King County GIS 2013

Boeing Auburn
Auburn, Washington

**Intermediate Zone (40-60 ft)
Groundwater Elevation Contours
January 2015**

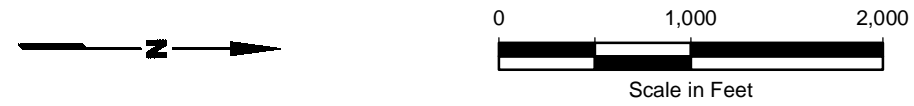
Figure
15

G:\Projects\02516412011010 2015 GW Contours\F16_GW_DZ.mxd 3/27/2015 NAD 1983 StatePlane Washington North FIPS 4601 Feet



- Legend**
- AGW102 Monitoring Well Designation
 - 76.06 Groundwater Elevation (ft, MSL)
 - 72 Groundwater Elevation Contours
 - 72.5 Groundwater Elevation Contours
 - Boeing Property
 - Waterway
 - Wetland Area
 - City Limits

- Notes**
1. All water level data in ft, MSL. Data collected in January 2015.
 2. Multilevel wells have multiple channels. Channel designations are included in the well ID (ex: AGW208-2).
 3. Black and white reproduction of this color original may reduce its effectiveness and lead to incorrect interpretation.



Base map source: Geometrix 2003; Aerial Photo Source: Esri World Imagery; Parcel Data Source: King County GIS 2013

Boeing Auburn Auburn, Washington	Deep Zone (80-100 ft) Groundwater Elevation Contours January 2015	Figure 16
-------------------------------------	--	---------------------

