
**Silverdale Dump Site
Removal Site Assessment
Trip Report
TDD: 97-06-0009**

Contract: 68-W6-0008
October 30, 1997

Region X

START

Superfund Technical Assessment and Response Team

Submitted To: Carl Kitz, On-Scene Coordinator
U.S. Environmental Protection Agency
1200 Sixth Avenue
Seattle, WA 98101

TRIP REPORT

DATE: October 30, 1997
TO: Carl Kitz, On-Scene Coordinator, EPA, Seattle, WA
FROM: Alexis Naiknimbalkar, E & E, Seattle, WA
SUBJ: Silverdale Dump Site
REF: TDD 97-05-0005

Place Visited:

Silverdale Dump Site
Section 8, Township 25, Range 1E, Lots 025, 026
Silverdale, Washington

Purpose of Trip:

Removal site assessment for alleged buried drums and cylinders.

Persons Responding:

Carl Kitz, On-Scene Coordinator
U.S. Environmental Protection Agency, Seattle, Washington
(206) 553-1671

Alexis Naiknimbalkar, Project Manager
Lyle Diederker, Geologist
Ecology and Environment, Inc., Seattle, Washington
Superfund Technical Assessment and Response Team (START)
(206) 624-9537

Brad Riedlinger, Equipment Operator
CET Environmental Services, Inc., Portland, Oregon
(503) 227-5892



ecology and environment, inc.

International Specialists in the Environment

1500 First Interstate Center, 999 Third Avenue
Seattle, Washington 98104
Tel: (206) 624-9537, Fax: (206) 621-9832

Carl KITZ

October 30, 1997

Mr. Gary Sink
START X Project Officer
U.S. Environmental Protection Agency
1200 Sixth Avenue, Mail Stop ECL-116
Seattle, WA 98101

RE: Contract 68-W6-0008
TDD: 97-07-0003

Dear Gary:

Enclosed please find a copy of the report for the Silverdale Dump site in Silverdale, Washington. The START conducted a removal assessment at the site from August 13 through August 14, 1997. START conducted photo documentation (Appendix A), an EM-31 geophysical field survey and trenching to determine the presence of alleged buried drums and cylinders on site.

The EM-31 geophysical field survey and trenching revealed no evidence of buried drums and cylinders. One 55-gallon drum containing 30 gallons of diesel or heating fuel was discovered during brush and debris clearing activities. A sample was taken and hazardous categorization was conducted. The results were consistent with a diesel or heating fuel type product. The drum was recycled by Spencer Environmental of Sumner, Washington.

Sincerely,

Michael Boykin
START Project Leader

cc. Naiknimbalkar, Project Manager

MB/an

Enclosure

Persons Contacted:

Beth Anderson
3638 NW Bison Lane
Silverdale, Washington

360-698 0068

Date of Trip:

August 13 through August 14, 1997.

BACKGROUND

The U.S. Environmental Protection Agency (USEPA) has tasked the Ecology and Environment, Inc. (E&E) Superfund Technical Assessment and Response Team (START) to conduct a removal assessment at the Silverdale Dump site, located in Silverdale, Washington (Figure 1). The site is approximately 10 acres defined by platted property boundaries, including three abandoned building structures. One area on the property was apparently used to dispose of household garbage and another area contains building material debris. Both areas are situated at the north end of the property. Three drainage pits were found on site (Figure 2) that are likely related to drain-field percolation tests. Each are approximately 5-feet by 5-feet.

The current property owners Andrew K. Seitz and Mervyn F. Killoran, purchased the land from the Internal Revenue Service (IRS) and are planning to develop the property. Reportedly, 12 years ago, a neighboring property owner, Beth Anderson, had witnessed three flatbed trucks carrying drums and cylinders enter the site in the evening, and exit the next morning empty. The witness also observed excavations in the suspect area, large enough to allow a truck to enter. The County Health Department was contacted at the time of the incident by the property owner. A Health Department inspector was unable to substantiate the claim of drum or cylinder burial.

START ACTIONS

On August 13, 1997 the START subcontracted removal assistance including bulldozer and backhoe operations to CET Environmental Services. The initial work involved brush and debris removal from the site to provide a cleared area for the geophysical survey (Refer to Figure 2).

Prior to conducting the electromagnetic survey, the field team established a grid at 20 foot node spacings throughout the cleared area. The field team then conducted an electromagnetic conductivity geophysical investigation throughout the property using an EM-31 device. At each node, four readings were collected from two vertical dipole positions and two horizontal dipole positions. The orientations completed at each node were approximated to north-south and east-west positions. The depth range for the EM-31 is typically 6 meters in the horizontal dipole position and 3 meters in the vertical dipole position. Included with the readings is an in-phase reading that provides an indication of metallic objects. Appendix B provides contoured plots of the conductivity values and in-phase readings for the cleared area. A careful review of the conductivity readings indicates the lack of any disturbances or buried objects throughout the area investigated, except for metal debris on the ground surface (e.g., Bus Seats).

Based on information provided by the contact person, the EPA directed the field team to conduct trenching in areas where drum and cylinder burial is alleged to have occurred. Trench #1 was excavated approximately 100 foot long, 2 foot wide and 11 feet deep in the suspect area. The field geologist found a top layer of 2 to 3 feet of disturbed soil and a lower layer of 8 to 9 feet of undisturbed glacial till. START then directed CET to excavate Trench #2 in an area that was used for household garbage dumping and Trench #3 in an area that was used for building material dumping. The field geologist determined that the soil within the Trench #2 and Trench #3 areas was undisturbed similar to the horizons found in Trench #1. Upon completion of trenching operations, each trench was backfilled and compacted to original grade.

A sample was collected from the drum found during clearing activities. A chemist performed hazardous categorization of the unknown and the sample results were consistent with a diesel or heating oil type of product. The drum was recycled by Spencer Environmental of Sumner, Washington.

CONCLUSION

The geophysical survey and trenching activities revealed no evidence of buried drums and cylinders. The site observations did reveal that the buildings on the property were constructed or moved into large excavations and were never backfilled against foundations. These excavations may be related to those witnessed 12 years ago by Beth Anderson. The three buildings remain on site. The EPA has requested that a geophysical survey be conducted after buildings are removed during planned development by the new property owners. The property owners are responsible for notifying the EPA after buildings are removed.

Appendix A

PHOTOGRAPH IDENTIFICATION SHEET

Camera Serial #: 645493
 Lens Type: 35mm

TDD #: 97-06-0009
 Site Name: Silverdale Dump site

Photo No.	Date	By	Description
1-1	8/13/97	AN	55-gallon drum approximately 1/4 full found while clearing brush and debris from site. Facing East.
1-2	8/13/97	AN	Bulldozer clearing the site. Facing South.
1-3	8/13/97	LD	Bulldozer piling debris. Facing South.
1-4	8/13/97	LD	Scattered surface debris. Facing South.
1-5	8/13/97	LD	Unidentified object with US Government stenciled on it. Facing East.
1-6	8/13/97	LD	Unidentified object with US Government stenciled on it. Facing East.
1-7	8/13/97	LD	Unidentified object with US Government stenciled on it. Facing East.
1-8	8/13/97	LD	Abandoned house with propane tank (foreground). Facing Southwest.
1-9	8/13/97	LD	View of bulldozing progress. Facing South.
1-10	8/13/97	AN	View of cleared area. Facing South.
1-11	8/13/97	AN	START conducting electromagnetic survey using EM-31 device. Facing West.
1-12	8/13/97	LD	START conducting electromagnetic survey using EM-31 device. Facing West.
1-13	8/13/97	LD	START conducting electromagnetic survey using EM-31 device. Facing West.
1-14	8/14/97	AN	Trench #1. Facing South.
1-15	8/14/97	AN	Trench #1. Notice undisturbed glacial till. Facing South.
1-16	8/14/97	AN	Trench #1. Facing South.
1-17	8/14/97	AN	Trench #1. Facing South.
1-18	8/14/97	AN	Panoramic photo of Trench #1. Facing South.
1-19	8/14/97	LD	Panoramic photo of Trench #1. Facing South.
1-20	8/14/97	LD	Panoramic photo of Trench #1. Facing South.

PHOTOGRAPH IDENTIFICATION SHEET

Camera Serial #: 645493

TDD #: 97-06-0009

Lens Type: 35mm

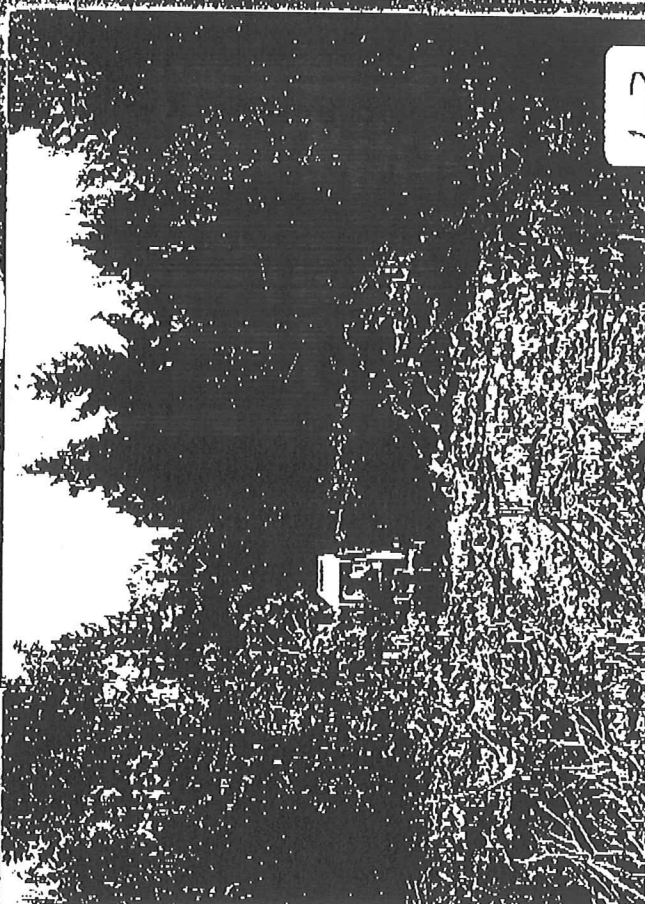
Site Name: Silverdale Dump site

Photo No.	Date	By	Description
1-21	8/14/97	LD	Panoramic photo of Trench #1. Facing South.
1-22	8/14/97	LD	1'-2' topsoil over 8'-9' glacial till in Trench #1. Facing East.
1-23	8/14/97	LD	Trench #2 in garbage area. Facing East.
1-24	8/14/97	LD	Trench #2 in garbage area. Facing East.
2-1	8/14/97	AN	Trench #3. Facing East.
2-2	8/14/97	AN	Trench #3. Facing East.

AN- Alexis Naiknimbalkar.

LD- Lyle Diediker

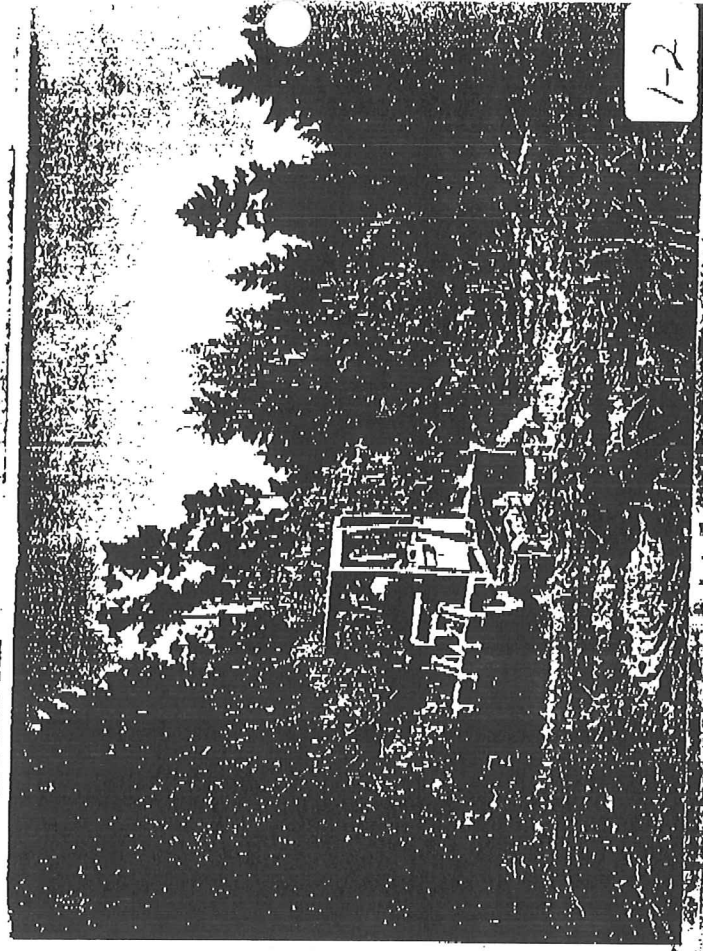
START- Superfund Technical Assessment and Response Team.



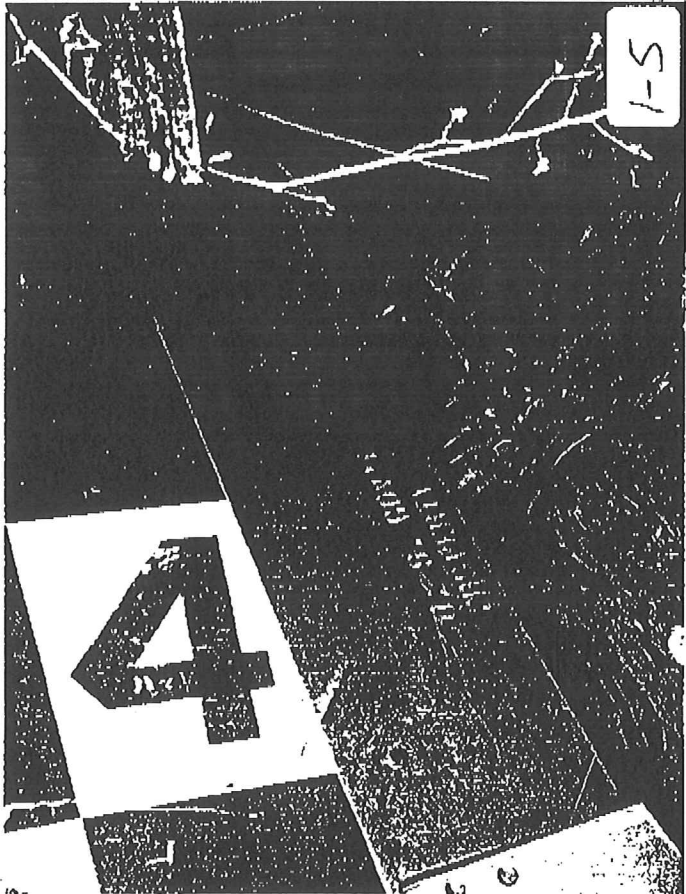
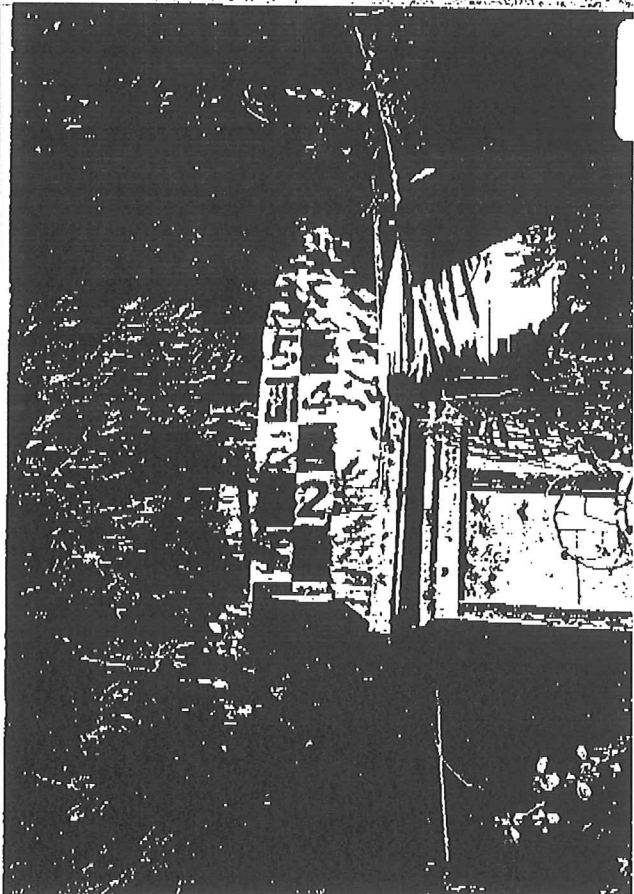
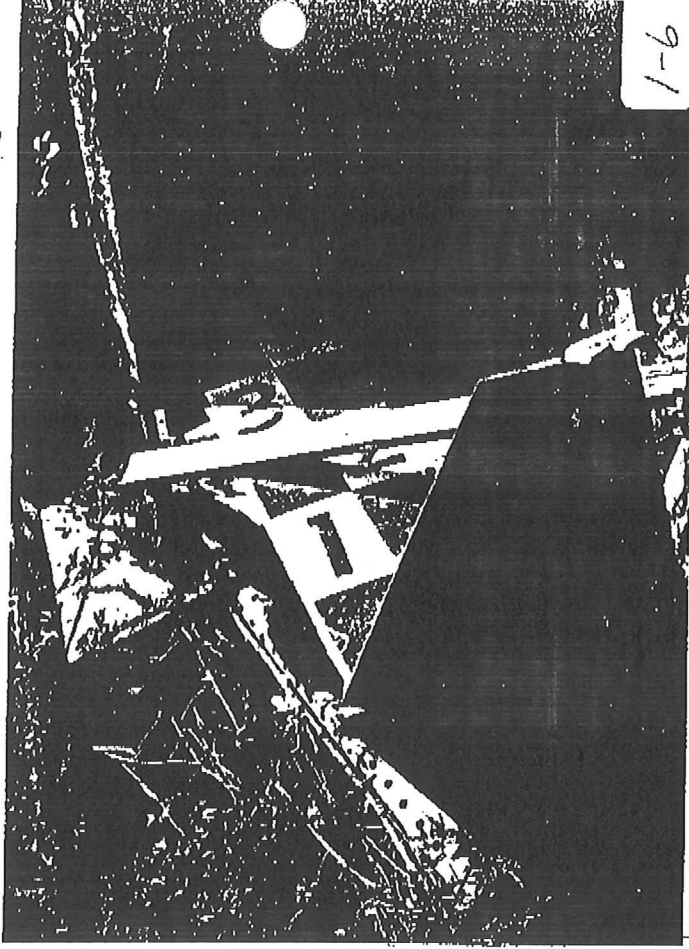
1-1

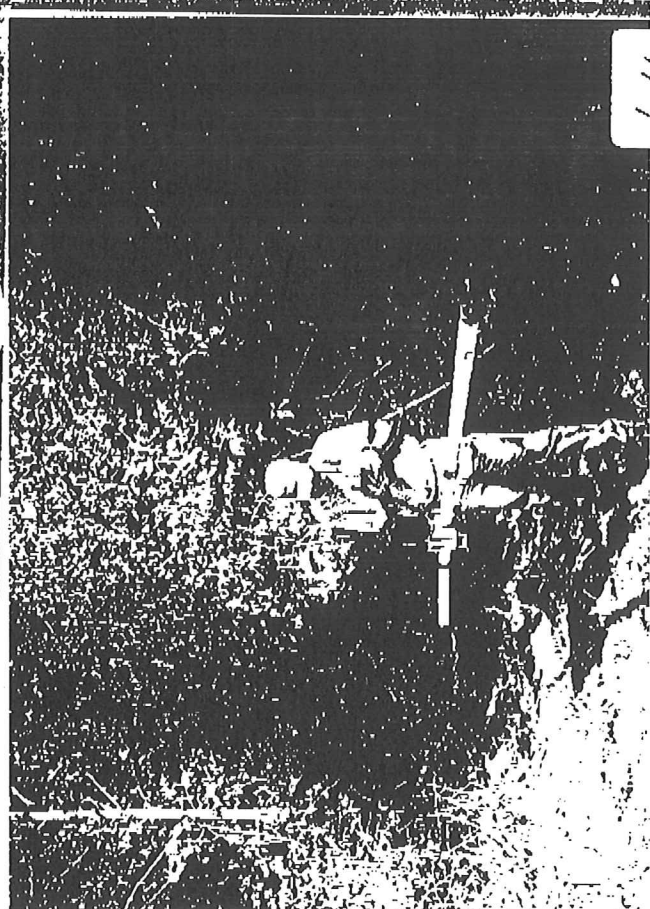
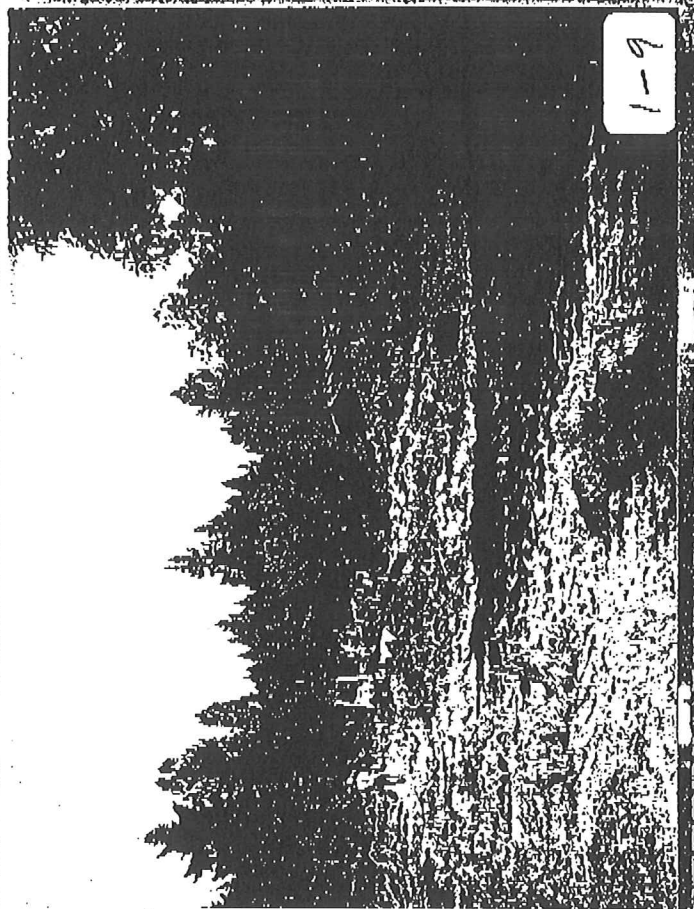
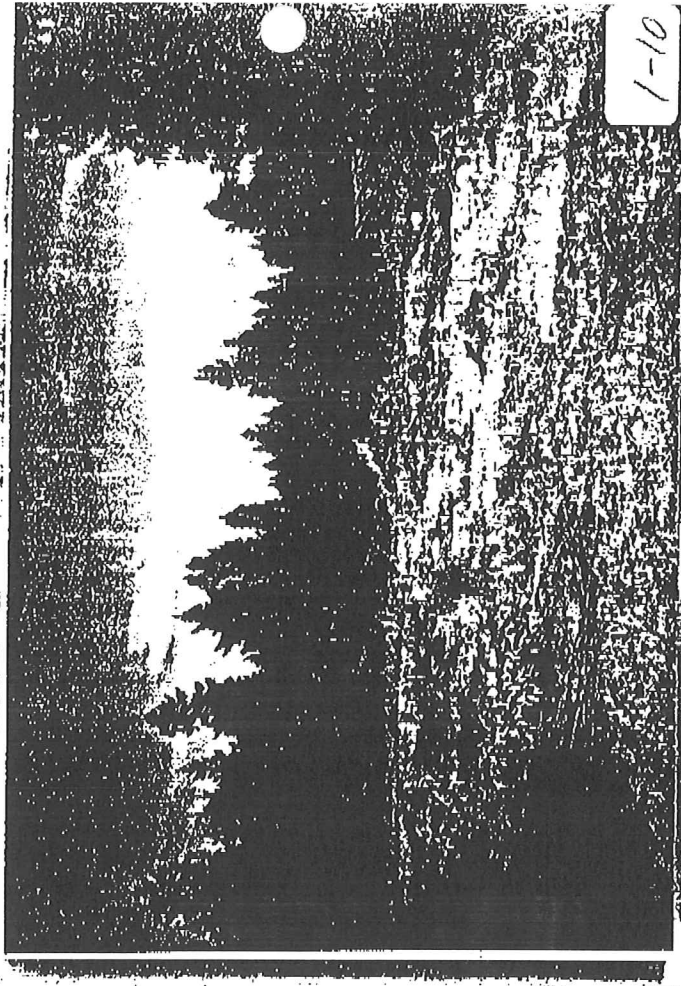


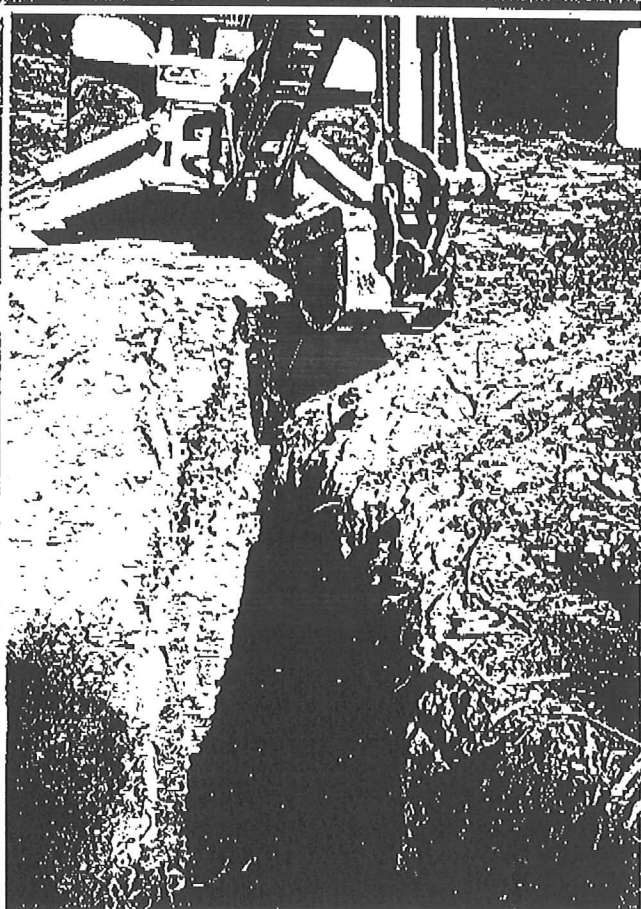
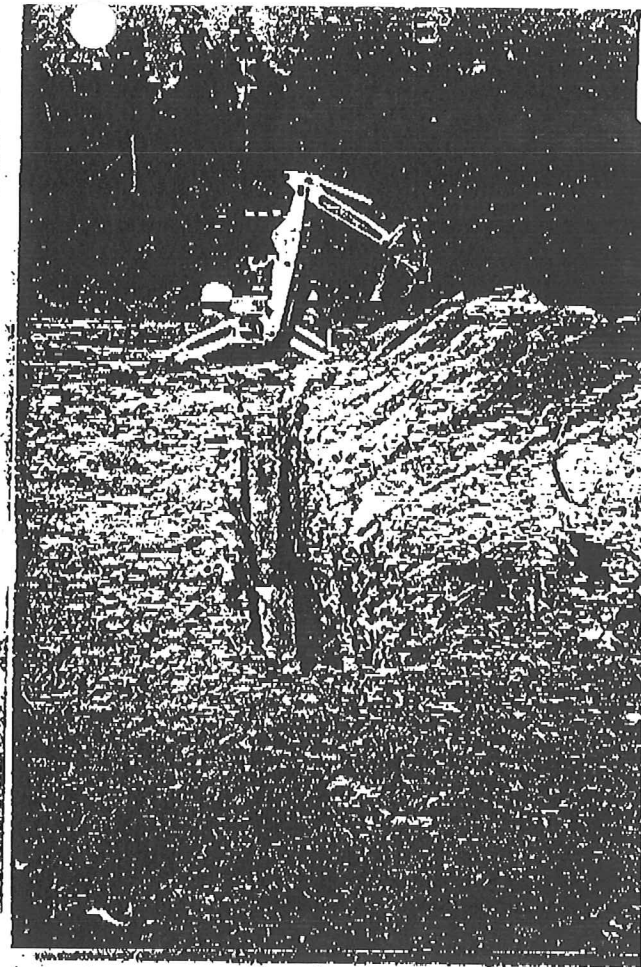
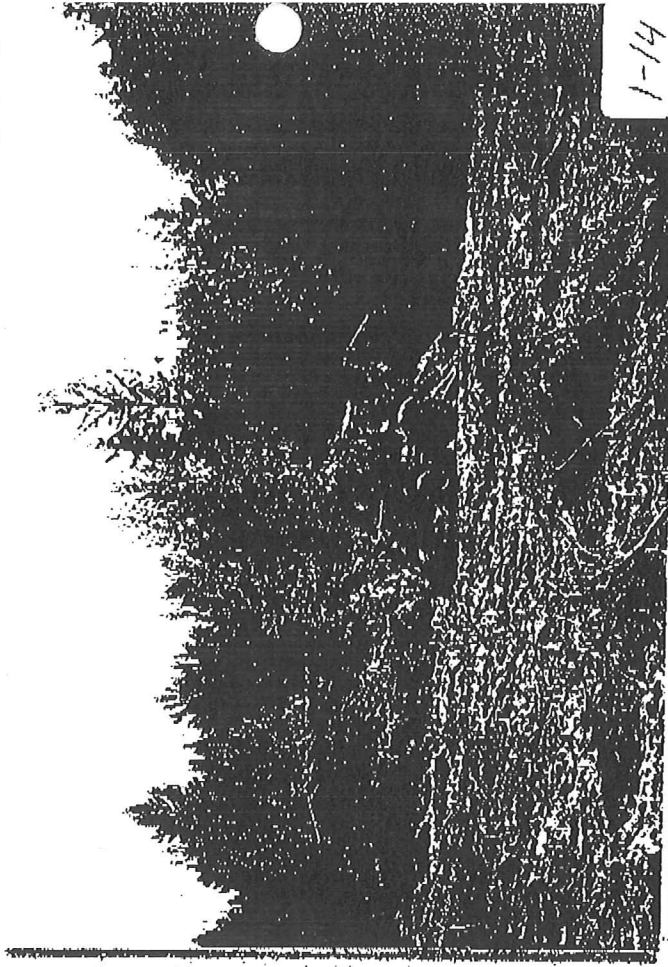
1-2

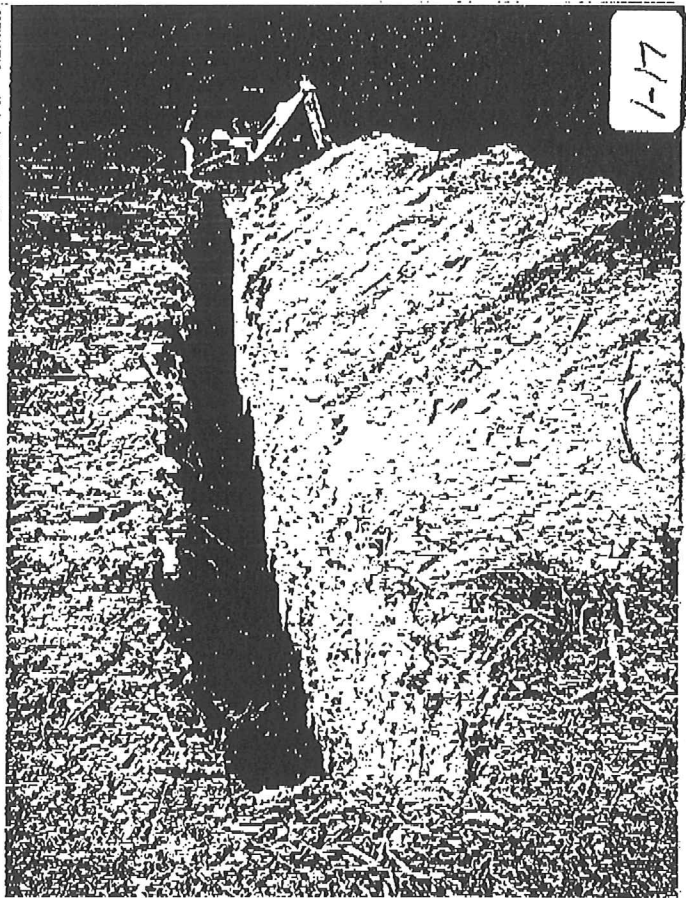
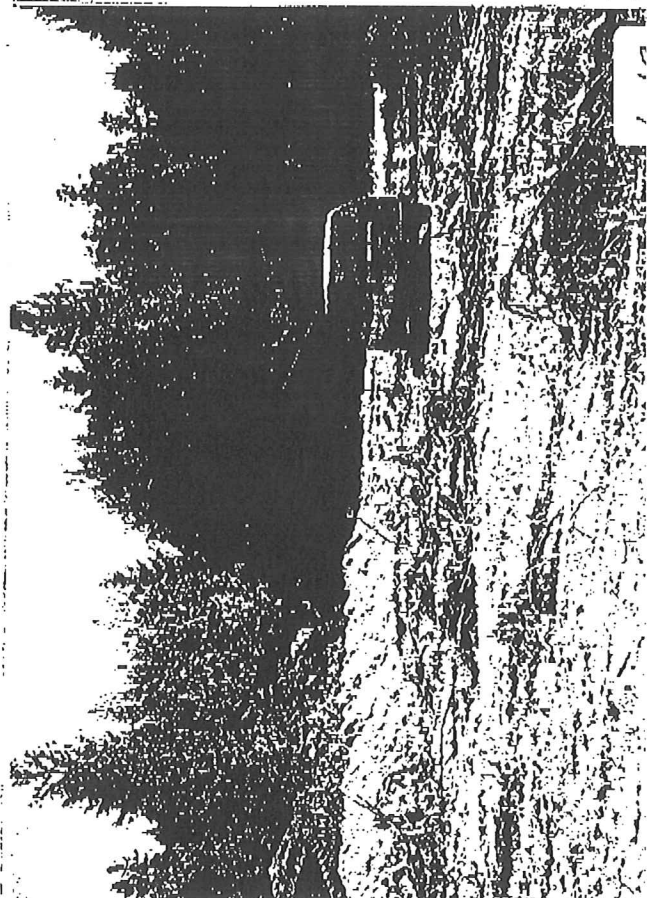
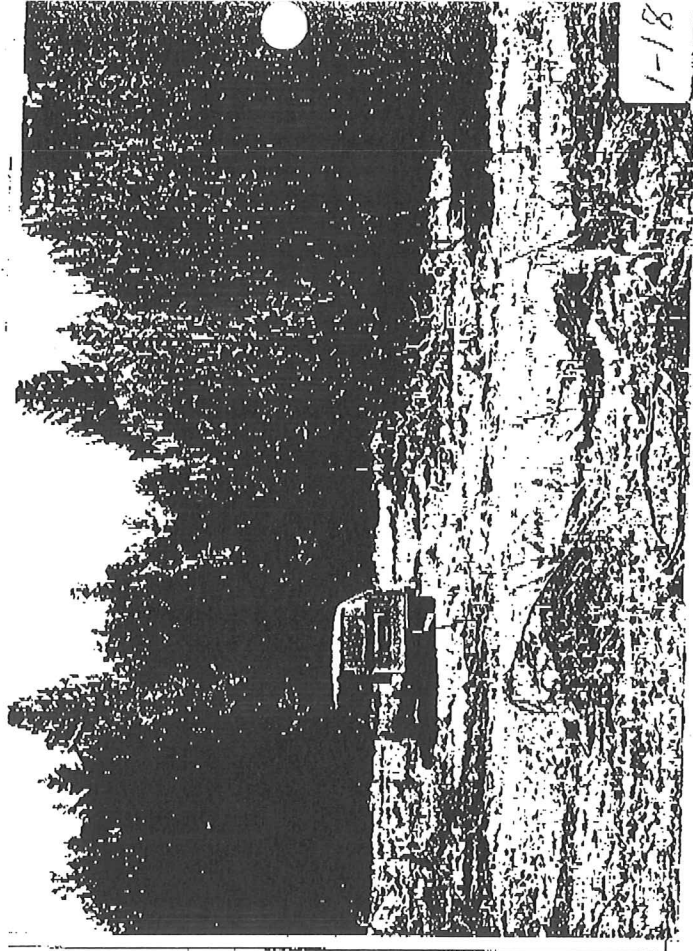
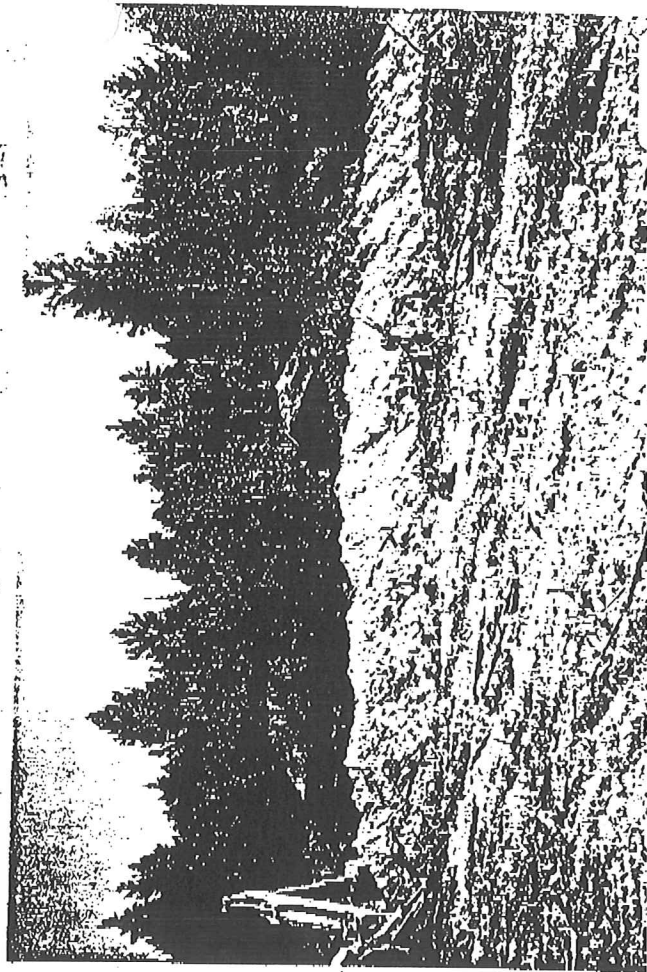


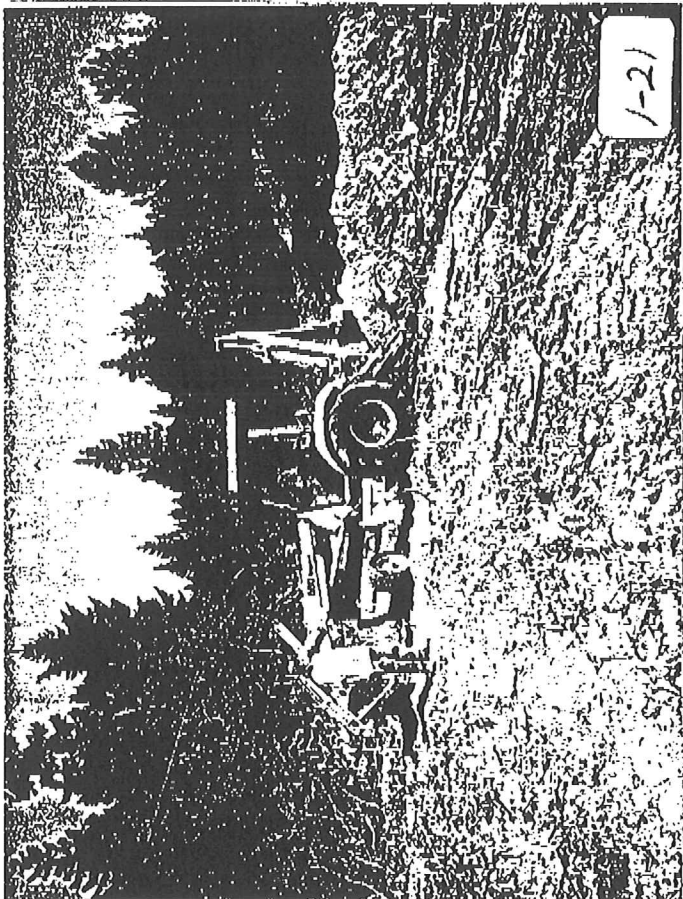
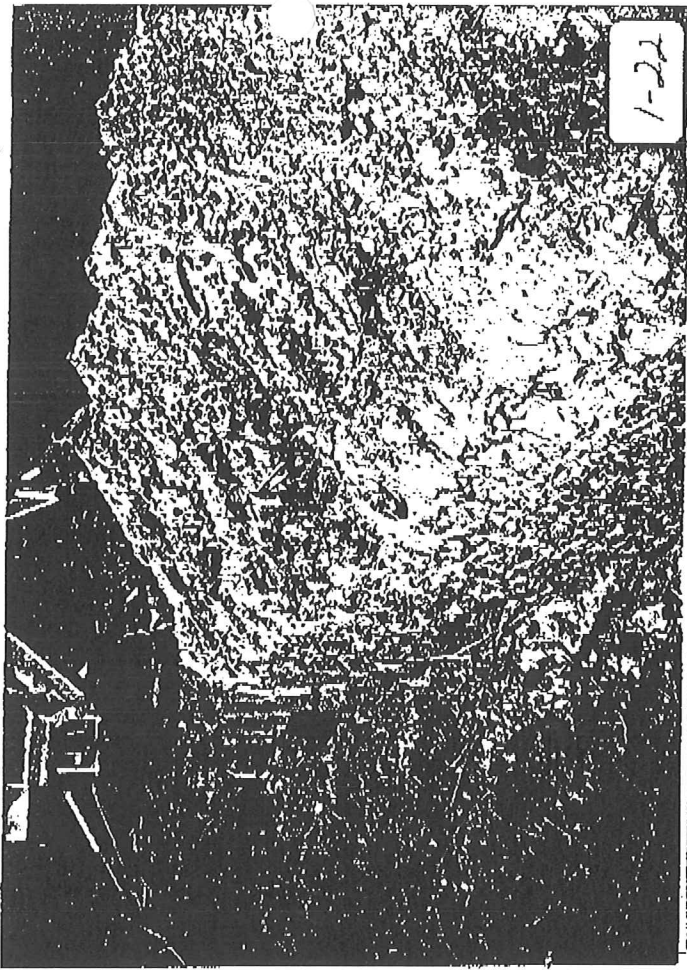
1-2

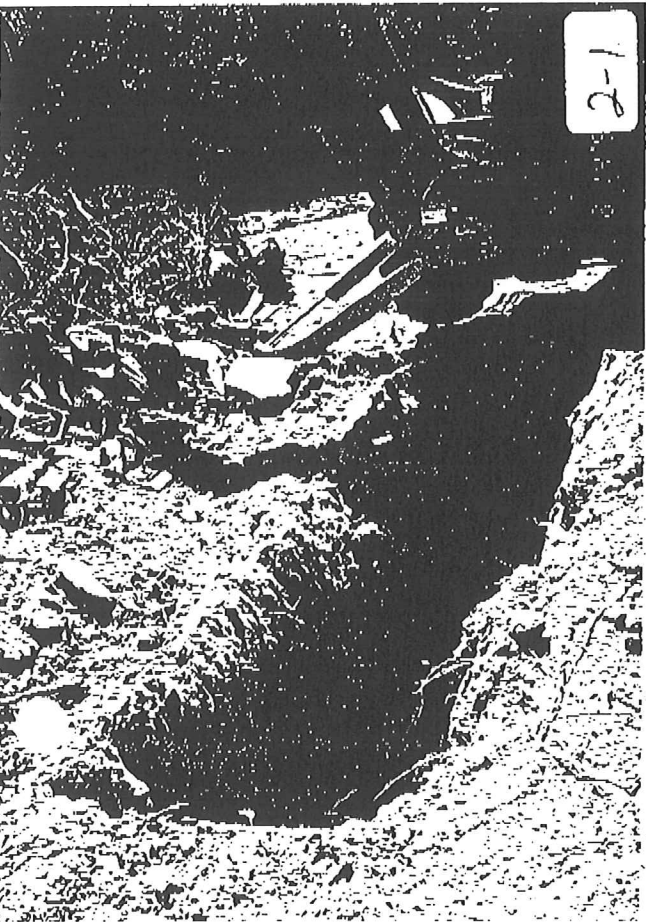
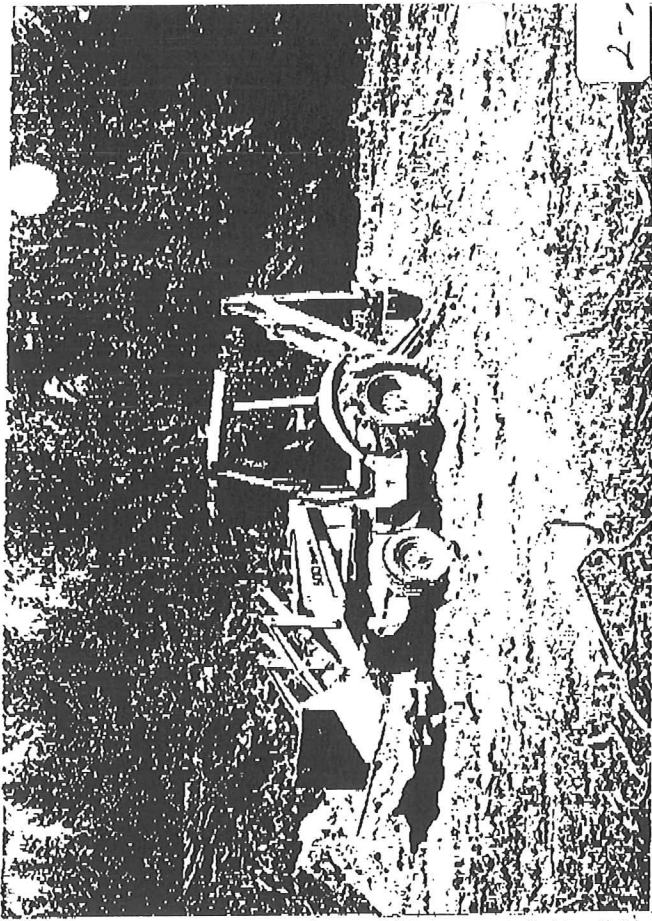






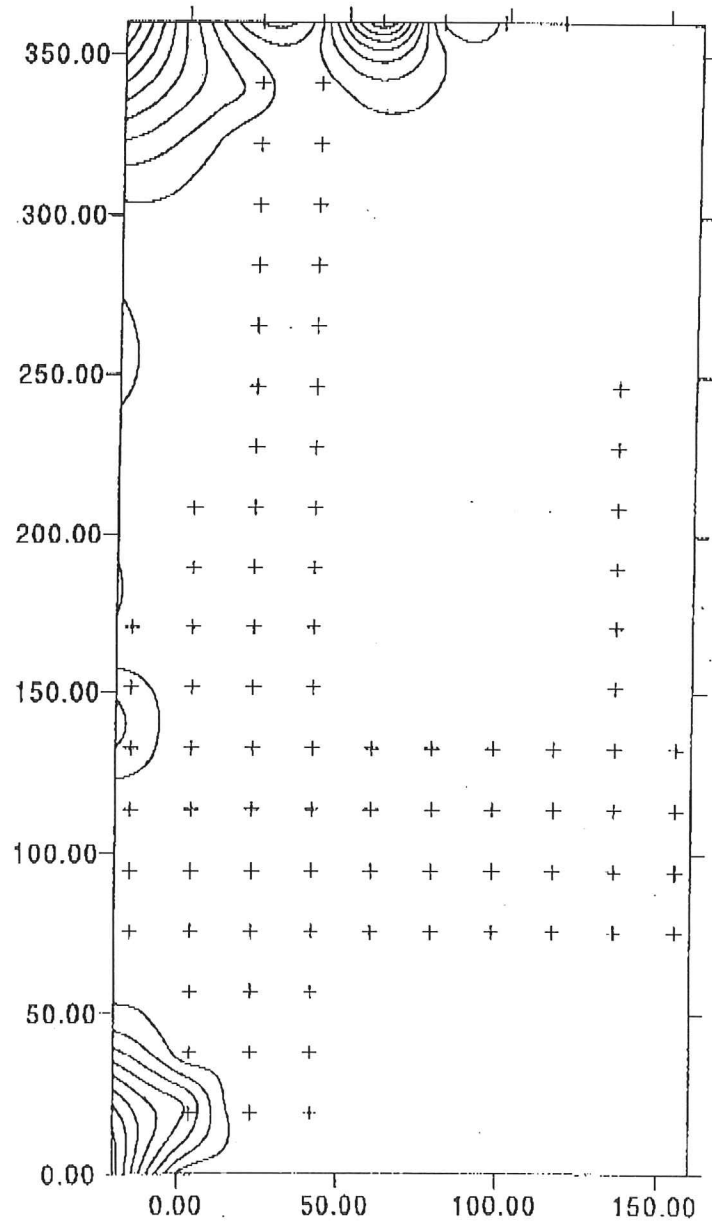




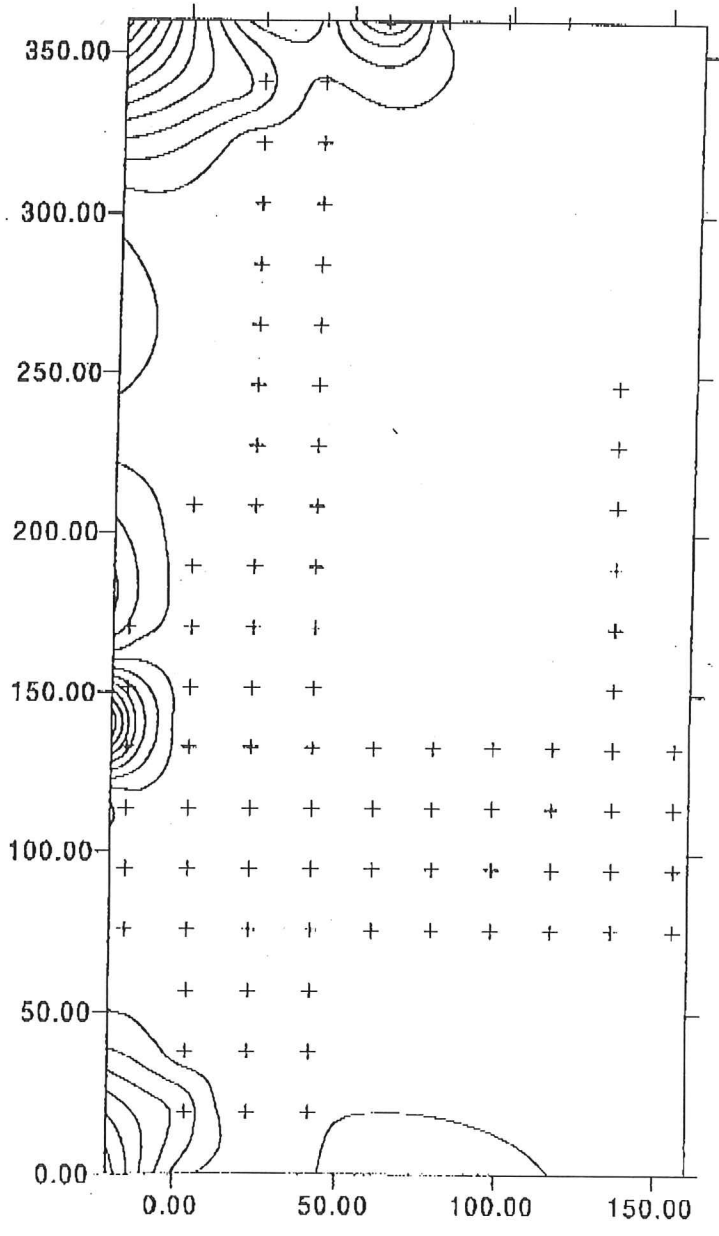


Appendix B

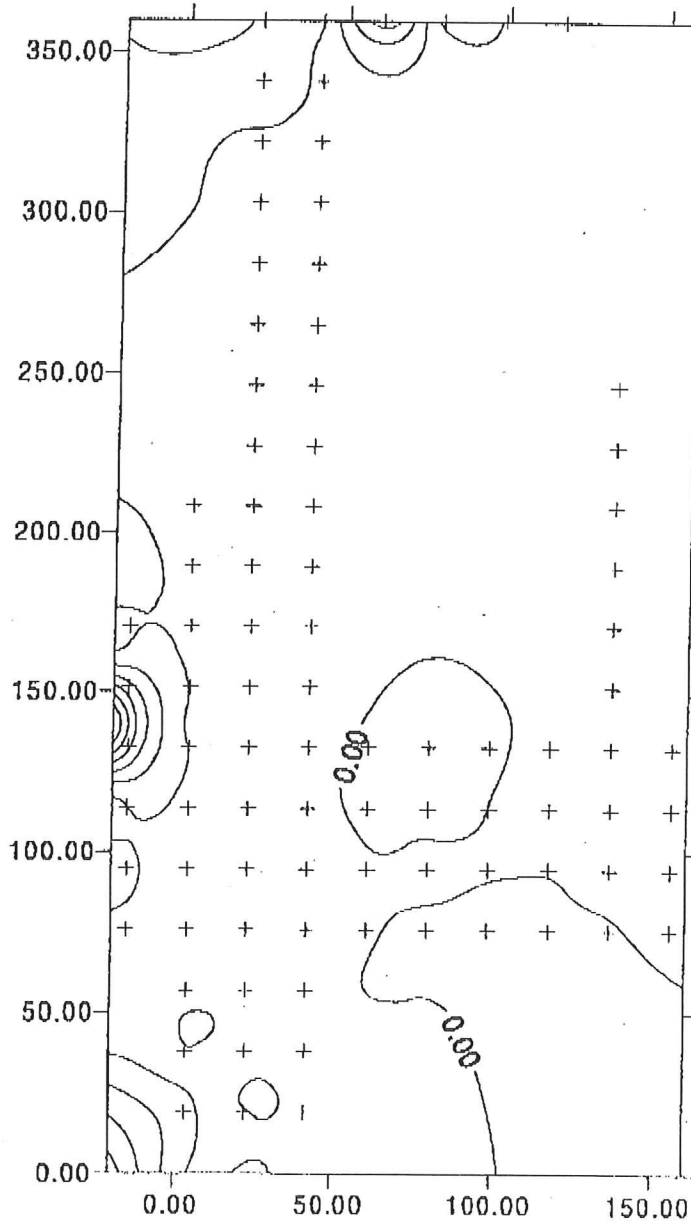
Silverdale EM-31 Results
Horizontal Dipole (North)



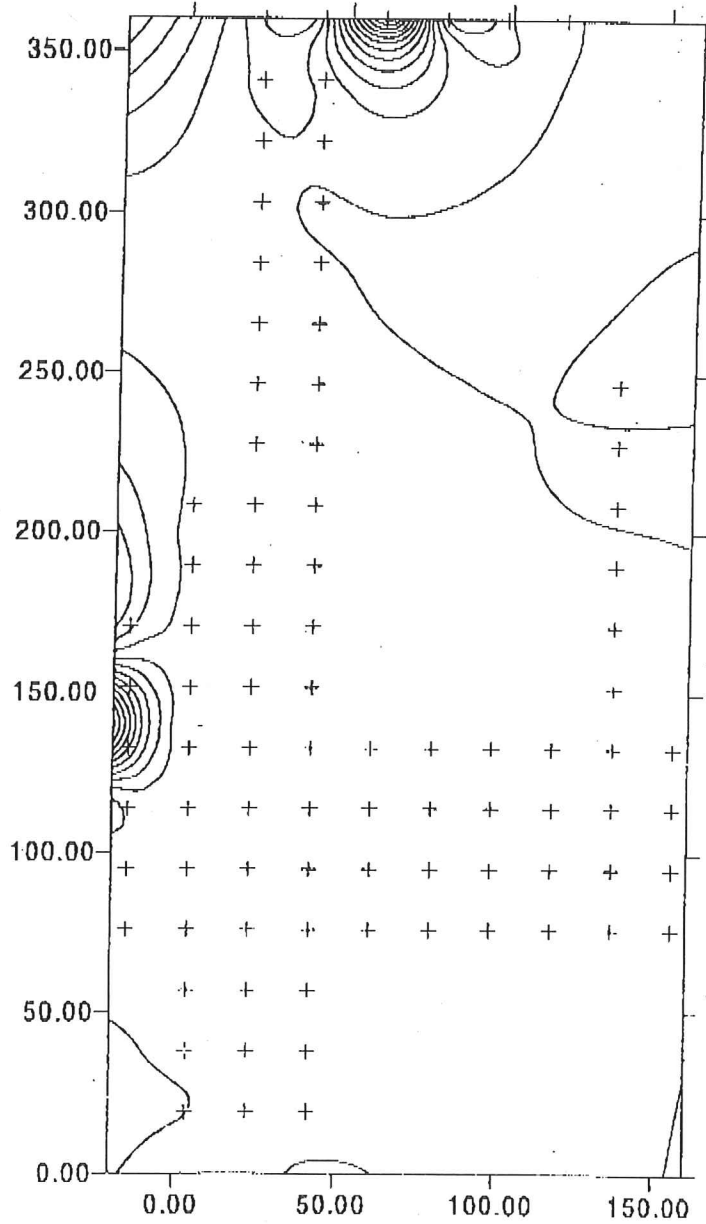
Silverdale EM-31 Results
Horizontal Dipole



Silverdale EM-31 Results
Vertical Dipole (North)



Silverdale EM-31 Results
Vertical Dipole



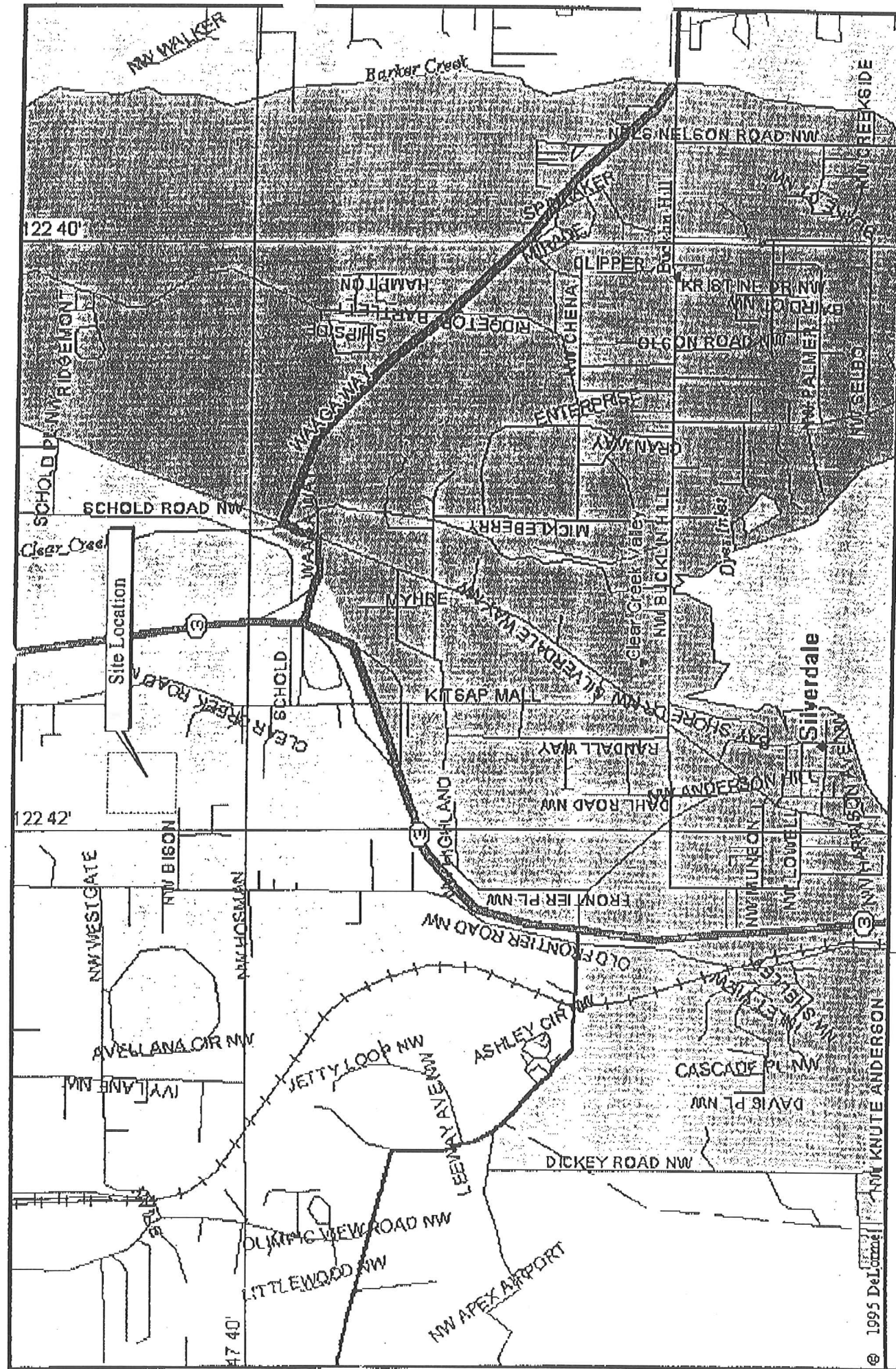


Figure 1
SITE VICINITY MAP

Drawn:	Date	Job No.	Dwg.No.
MRE	9/17/97	BF0901SFT0	BF0901F1

SILVERDALE DUMP SITE
Silverdale, Washington

0 1/4 1/2 Mile
Approximate Scale in Miles

© 1995 DeLozzi & Associates, Inc.

ecology and environment, inc.
International Specialists in the Environment
Seattle, Washington