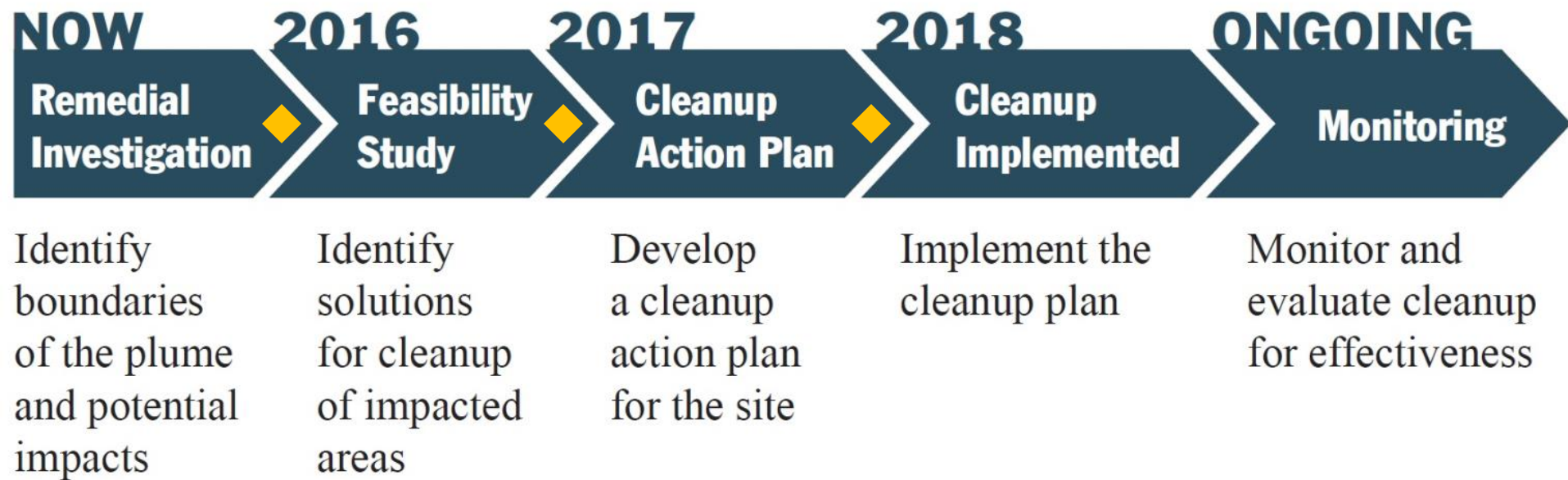


# BOEING AUBURN FABRICATION SITE CLEANUP

# The Cleanup Process



◆ Public comment period

# Remedial Investigation progress in 2014

---

- 19 new groundwater monitoring well locations
- 14 new temporary direct push boring locations
- 45 surface water quality samples
- 37 air quality samples
- 700+ groundwater samples
- 4 quarterly groundwater sampling events
- 10+ study reports published covering air and water

# Community outreach: May 2014 - present

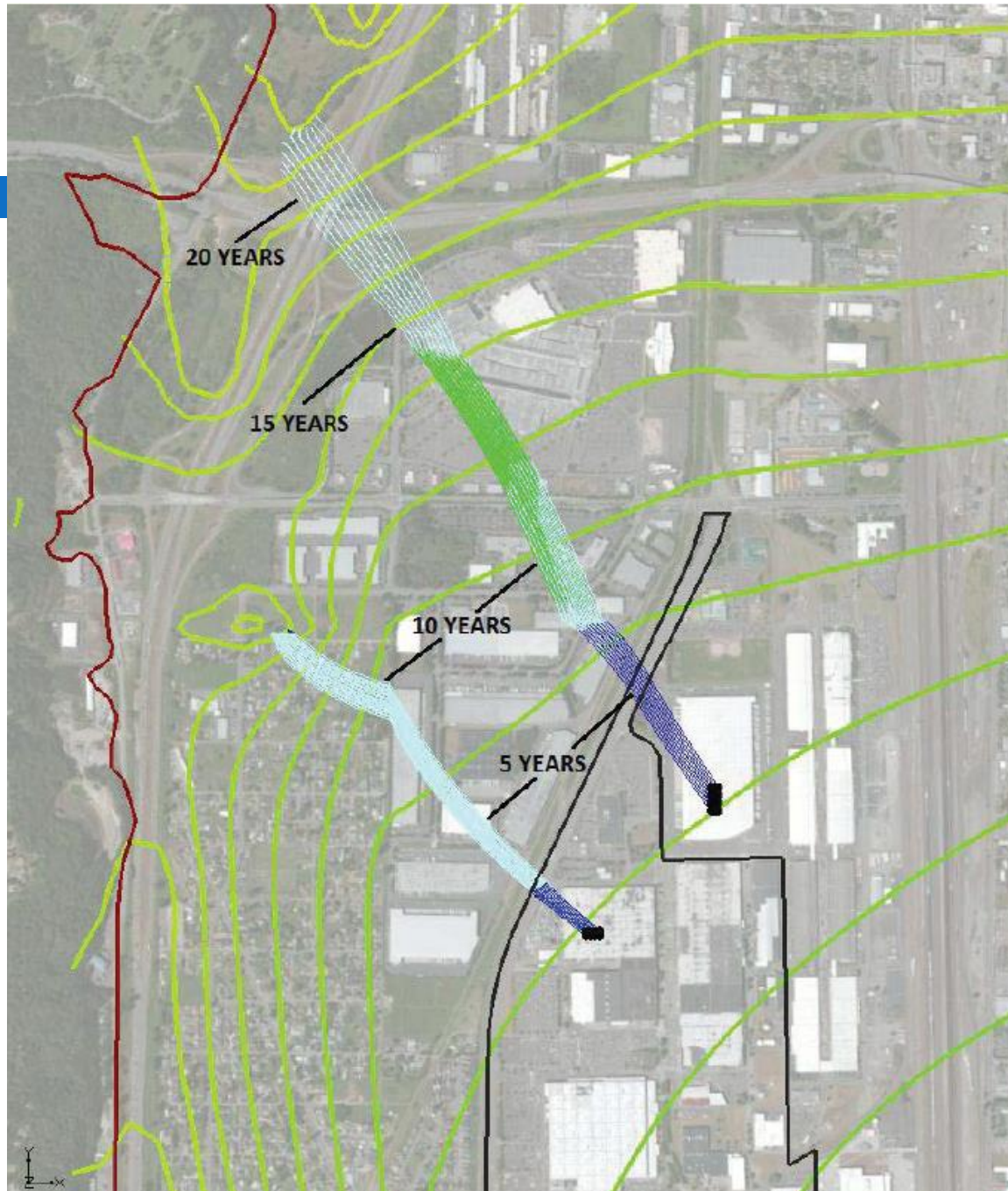
- Project hotline and email
- Two site-wide update mailers
- 3 Algona community drop-in sessions
- Algona Days Health Fair
- 2 public walking tours
- Online open house
- APAC Public Forum
- Outreach survey





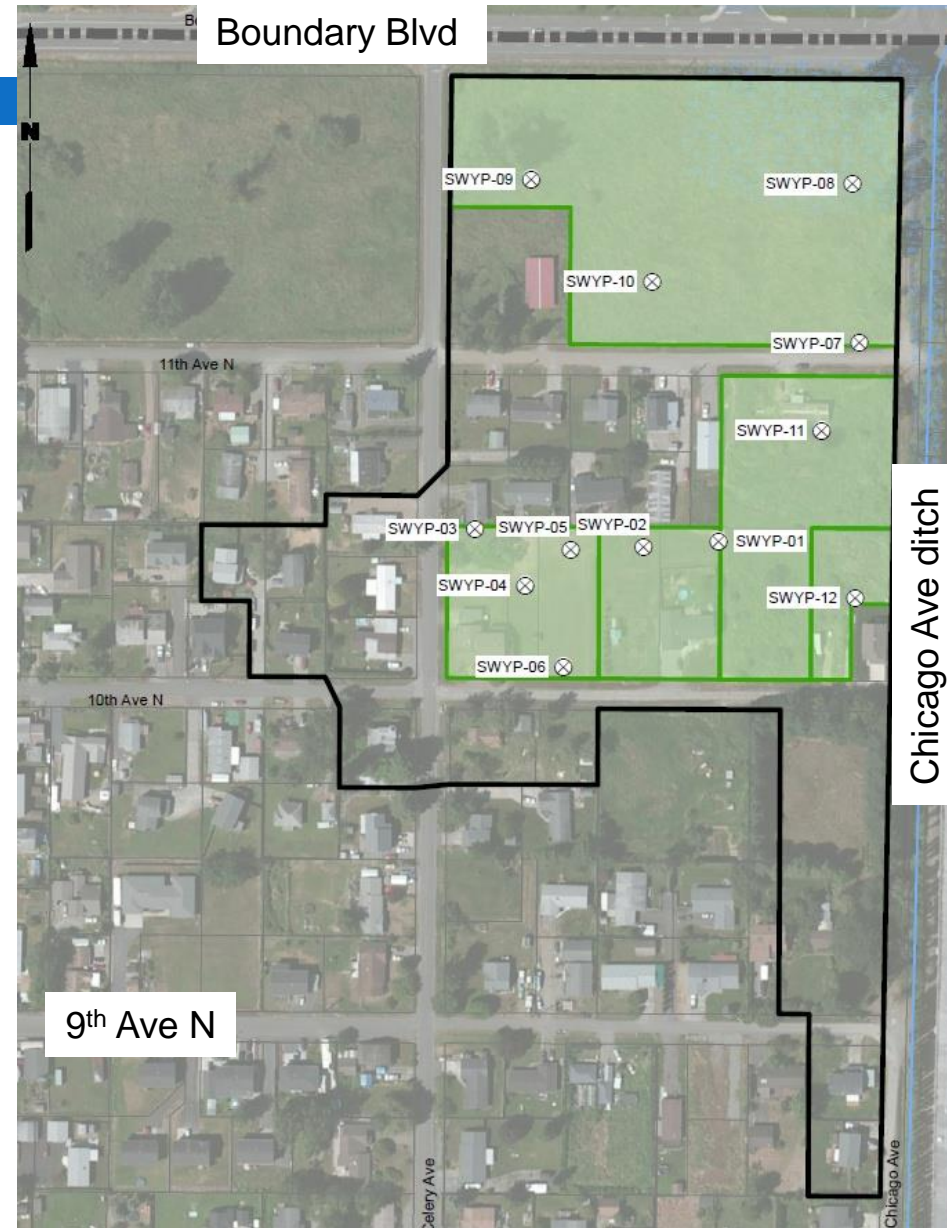
# Groundwater model

- Predicted groundwater travel
- 2 sources of TCE



# Site-wide yard water monitoring

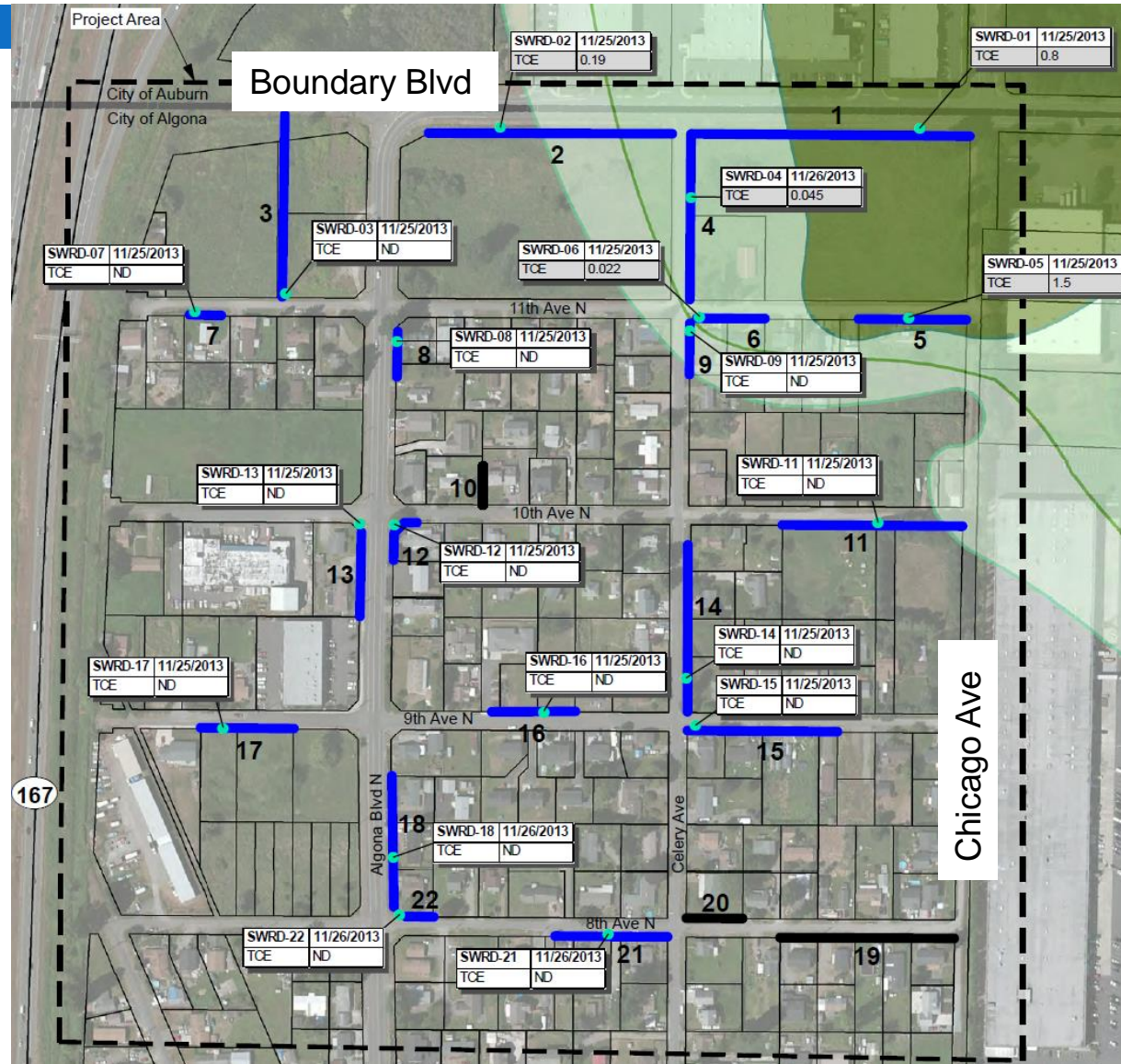
- TCE not detected at 11 of 12 sites
- 1 Detection: 0.055 ppb
- Yard water not an exposure hazard
- Dept of Health standard for touch = 32 ppb
- Drinking water standard = 5 ppb





# Site-wide ditch water monitoring

- TCE not detected at 14 of 19 sites
- Additional sampling at Chicago Ave ditch in August 2014



# Pilot Study

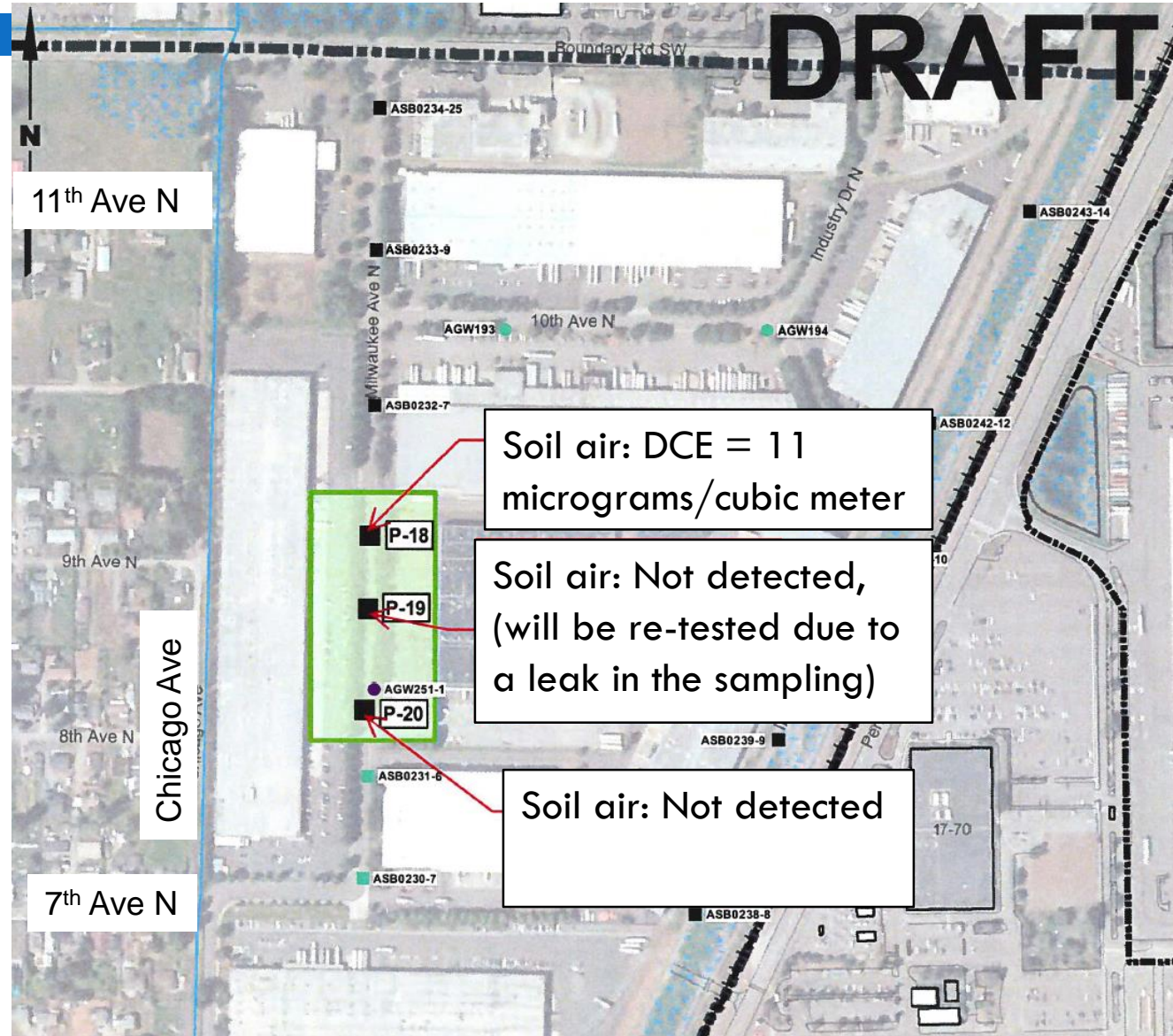
---

- Initial Pilot Study
  - ▣ Head start on the feasibility study
  - ▣ Will assess the effectiveness of bioremediation as a treatment option
- Proposed along Milwaukee Ave. N., pending approval from businesses and utility clearance



# Soil air testing on Milwaukee Ave

- Air space in soil pores withdrawn
- Some groundwater detections in this area
- TCE → DCE → VC



# What's Next?

- Finishing the Remedial Investigation, including public comment
- Initial Pilot Study
- Ongoing community outreach



◆ Public comment period

# Questions? Contact Ecology.

Visit Ecology's website:

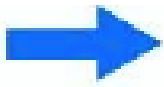
<http://Bit.ly/EcyBoeingAuburn>

Hotline: (253) 219-7645

Email: [BoeingAuburnSite@ecy.wa.gov](mailto:BoeingAuburnSite@ecy.wa.gov)

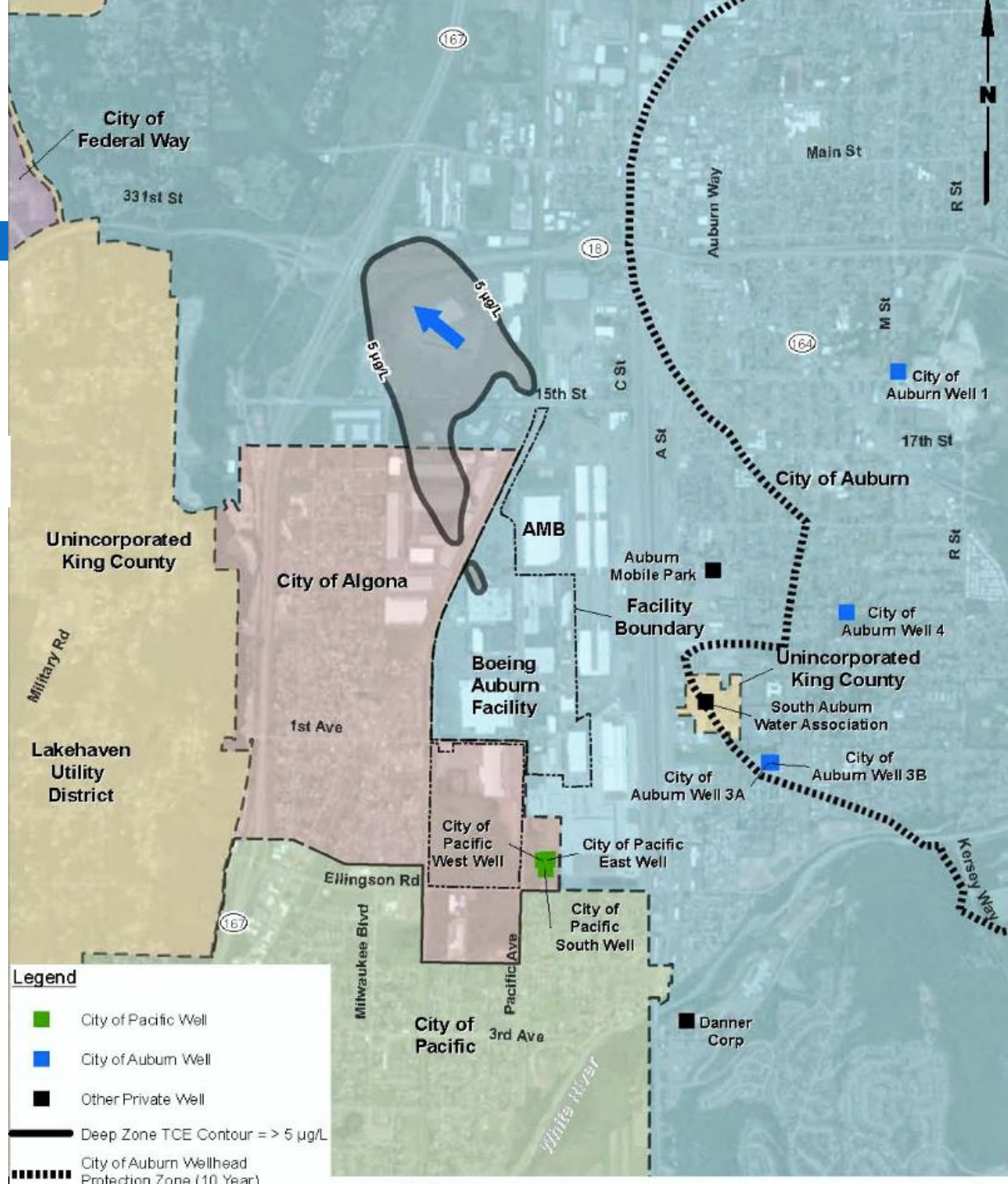


# Groundwater



Groundwater Flow Direction

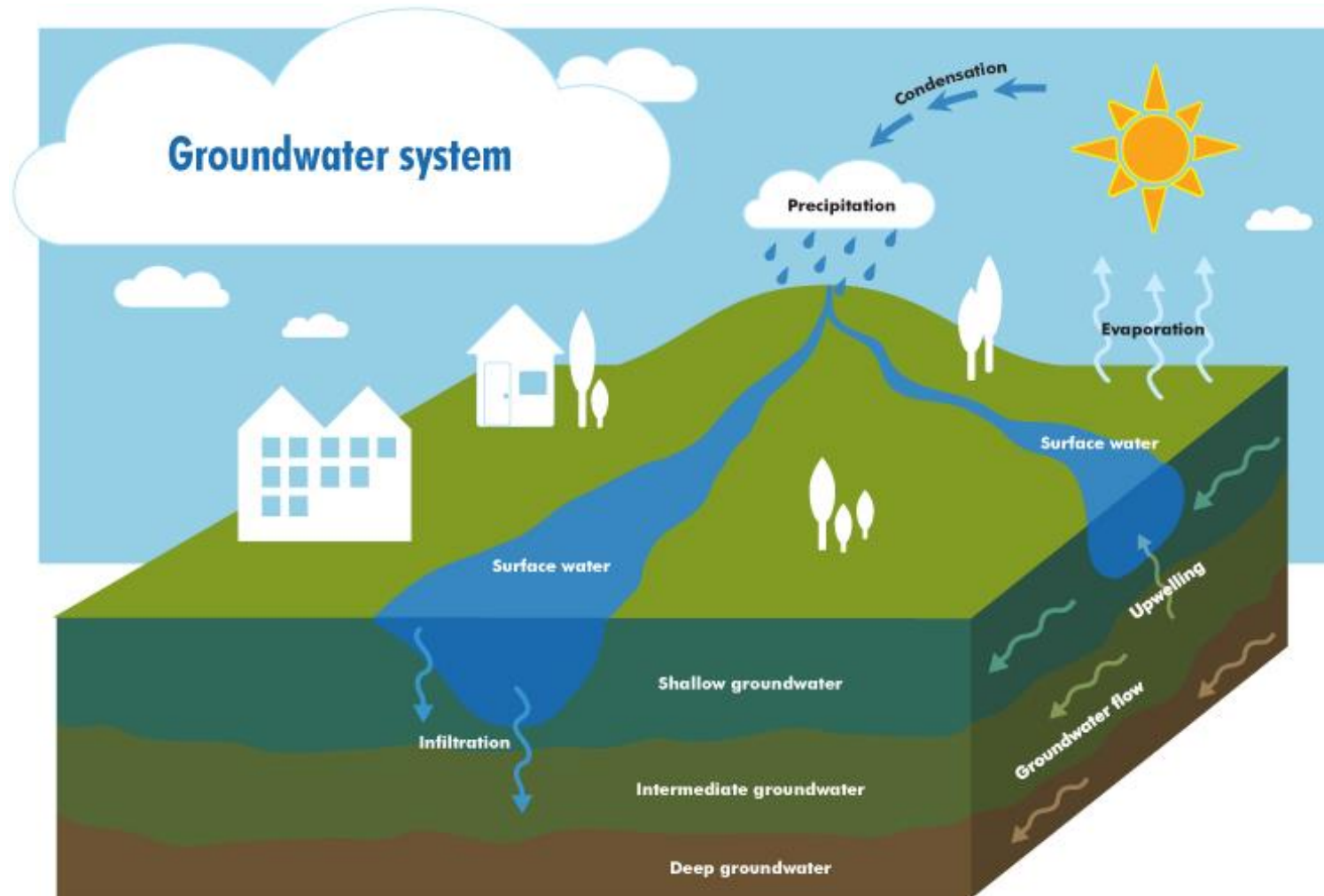
All Concentrations in ppb (parts per billion)  
 Deep Zone (80-100 ft.)  
 Safe Drinking Water Act criteria = 5 ppb.



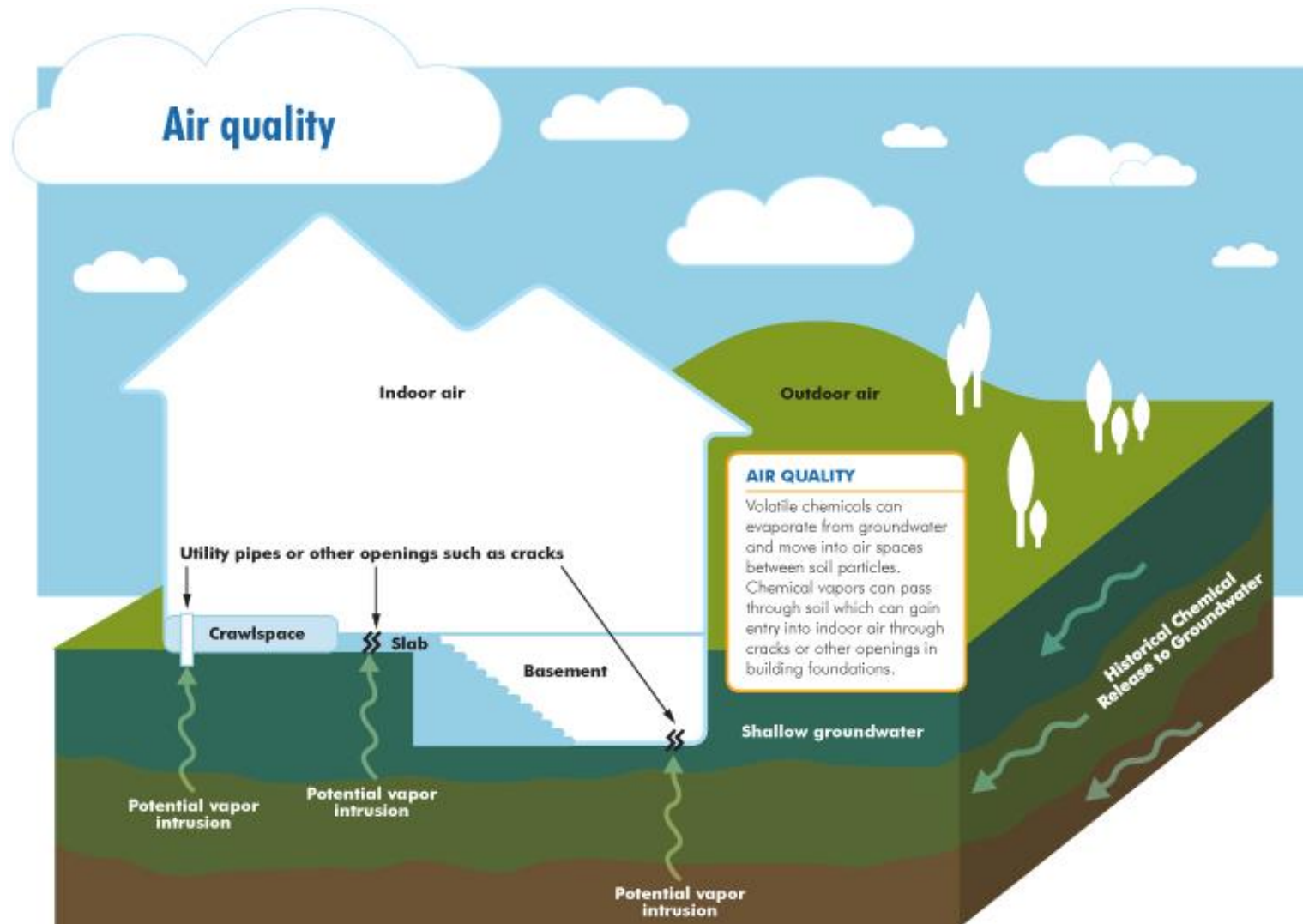
Map submitted to Ecology by  
 Boeing and Landau



# Groundwater



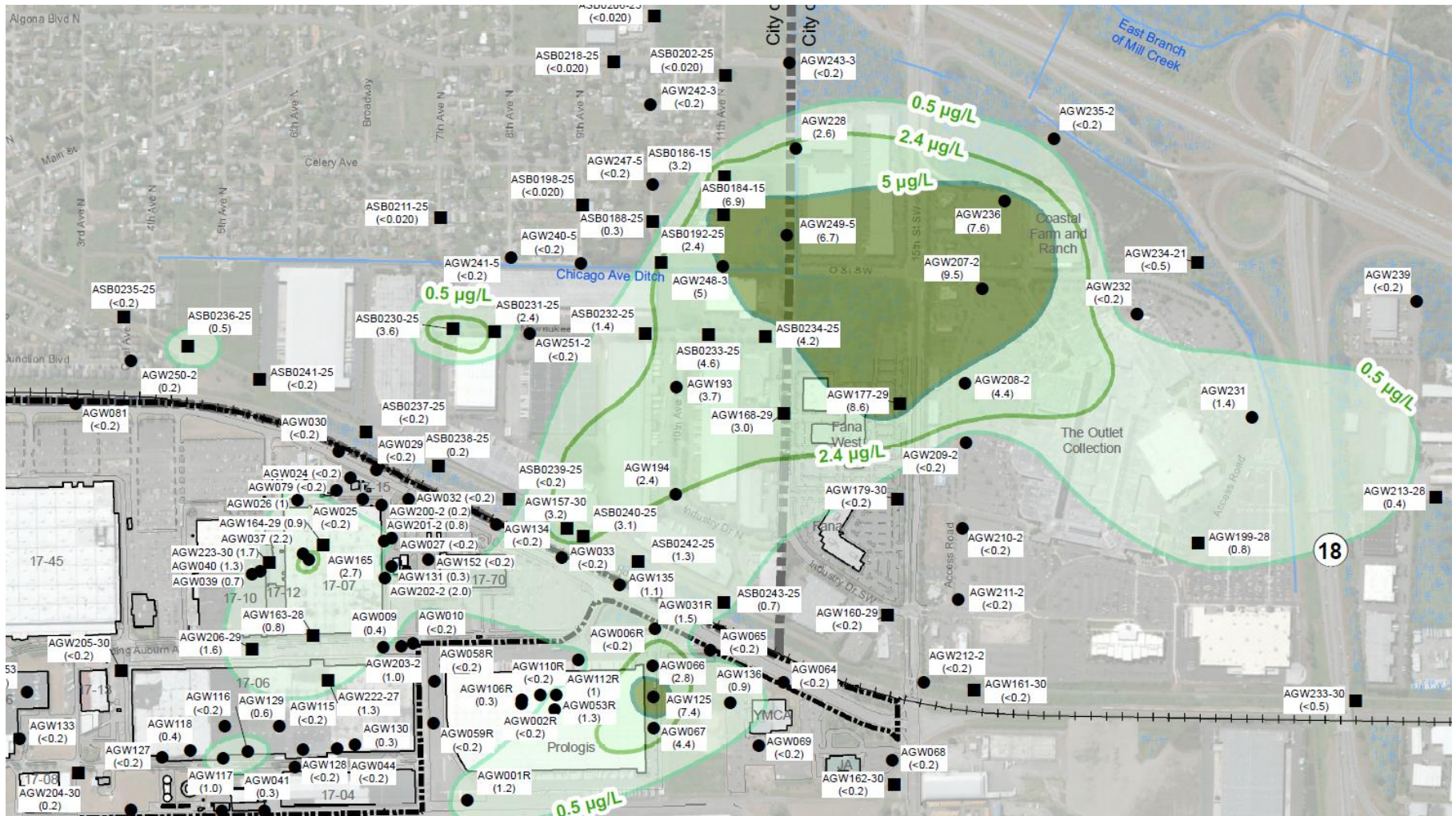
# Indoor Air Quality Testing



Beyond here – back pocket slides

# Groundwater (shallow)

North →



All Concentrations in ppb (parts per billion). Map submitted to Ecology by Boeing and Landau.



# Does the contamination affect the drinking water?

- Public drinking water systems are regularly monitored by the Department of Health.
- The cities' water supplies are located a safe distance from the contaminated groundwater.
- If you have a private well on your property, please call Ecology.



# Remedial Investigation

---

- Groundwater monitoring and modeling
- Surface water studies
- Air quality testing