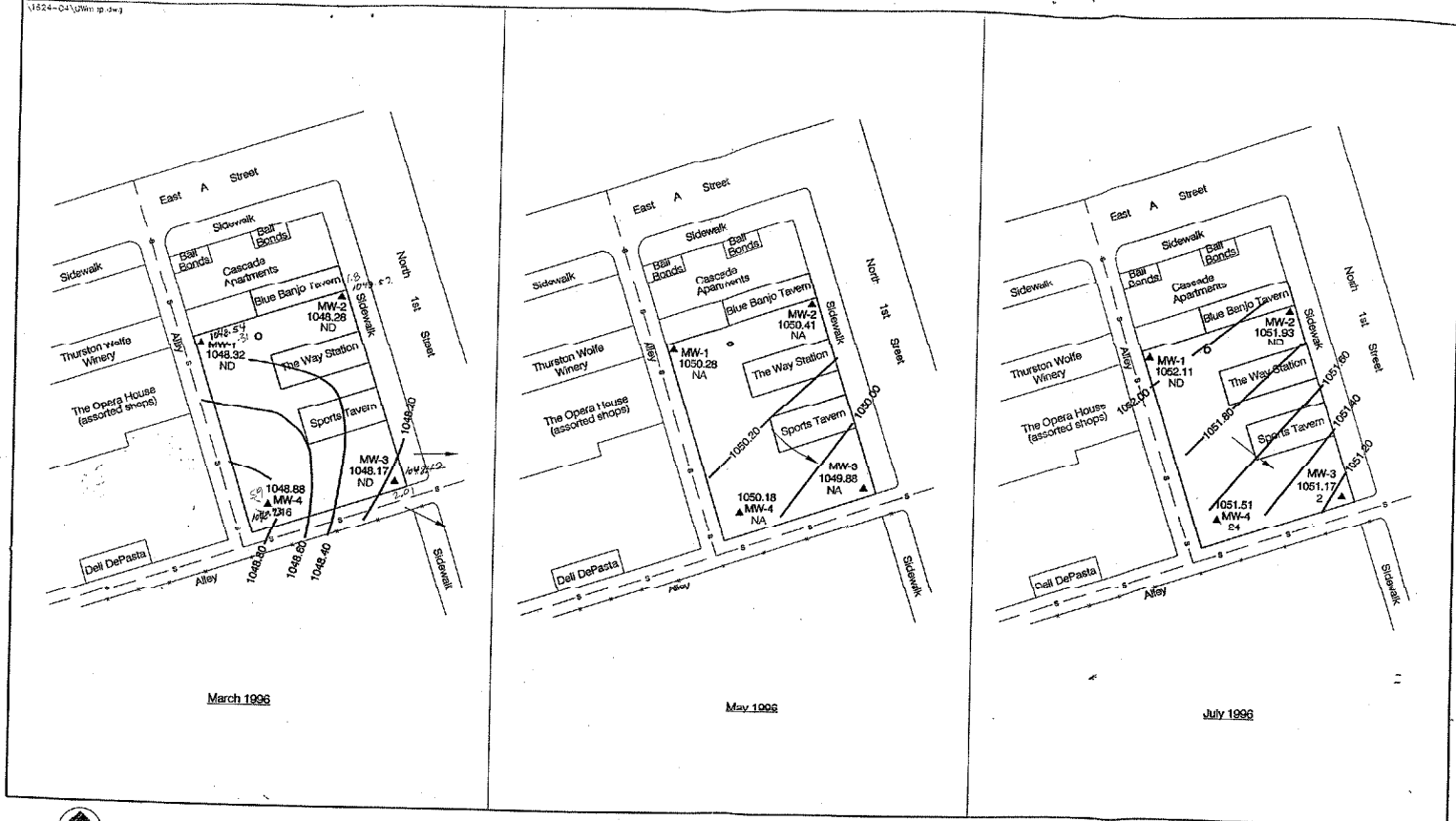


*Draft Issued for Ecology Review*

**APPENDIX D  
SUBFACILITY MONITORING  
WELL LOCATION MAPS**

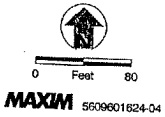
Remedial Investigation  
Yakima Railroad Area  
Yakima, Washington  
SECOR PN: 00378-001-02  
December 31, 1998



March 1996

May 1996

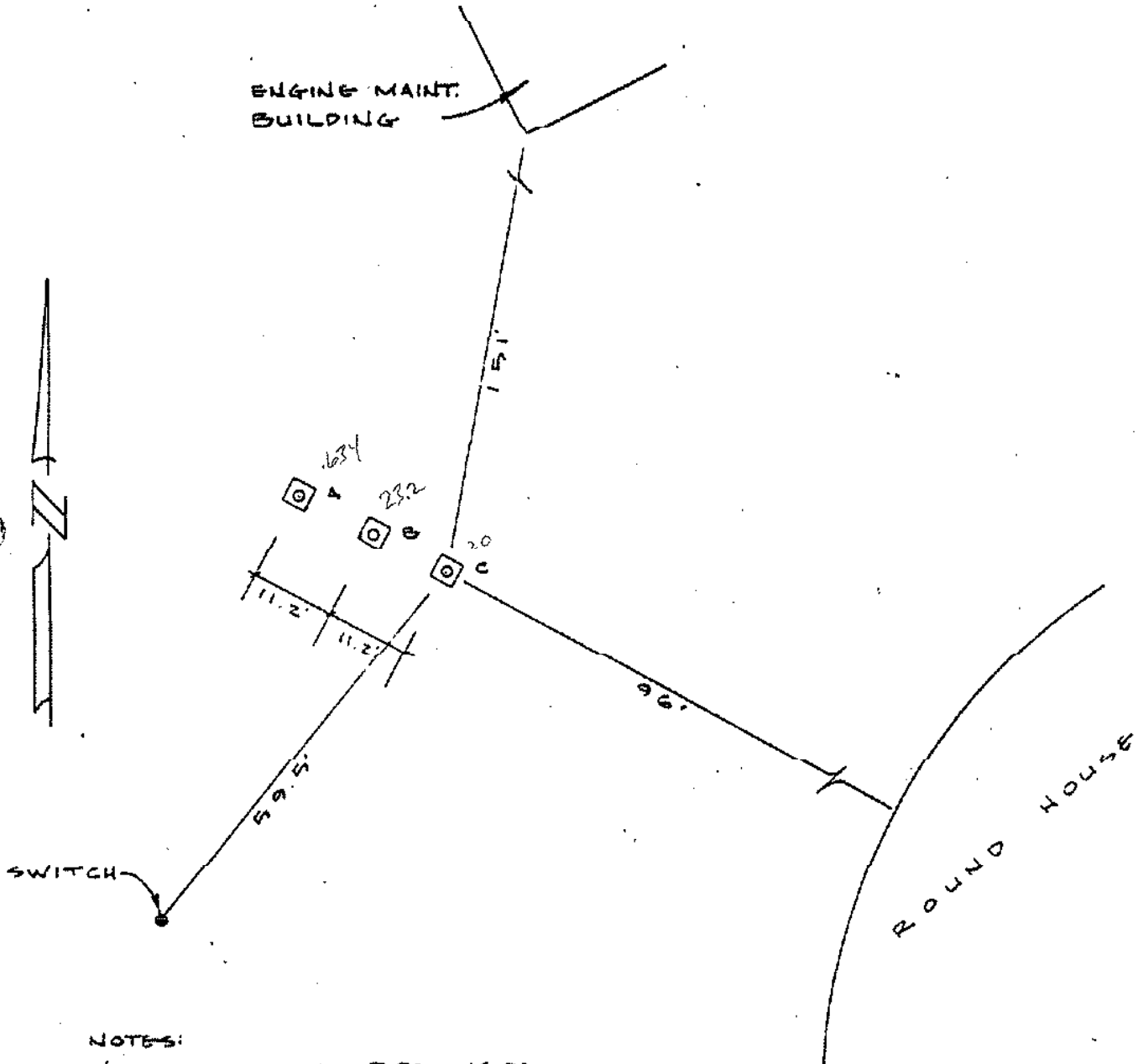
July 1996



- ▲ Monitoring Well
- 16 PCE Concentrations (ug/l)
- 1048.17 Groundwater Elevation (feet)
- Groundwater Potentiometric Line
- Groundwater Flow Direction
- ND Not Detected
- NA Not Analyzed

Groundwater Elevation Map  
 Adelino Property  
 Yakima, Washington  
 FIGURE 10

**MONITOR WELL LOCATION DIAGRAM**  
**WDOE-3S,3D,3I**  
**BURLINGTON NORTHERN R.R. ROUNDHOUSE AREA**  
 6 East Arlington



**NOTES:**

WELLS ARE 2" GAL. PIPE INSIDE CASING AND 2' TO 3' ABOVE NATURAL GROUND. CENTERED ON 4' SQUARE PAD.

ELEVATIONS	A	1093.27	(1093.27)
	B	1093.12	(1093.12)
	C	1093.32	(1093.32)

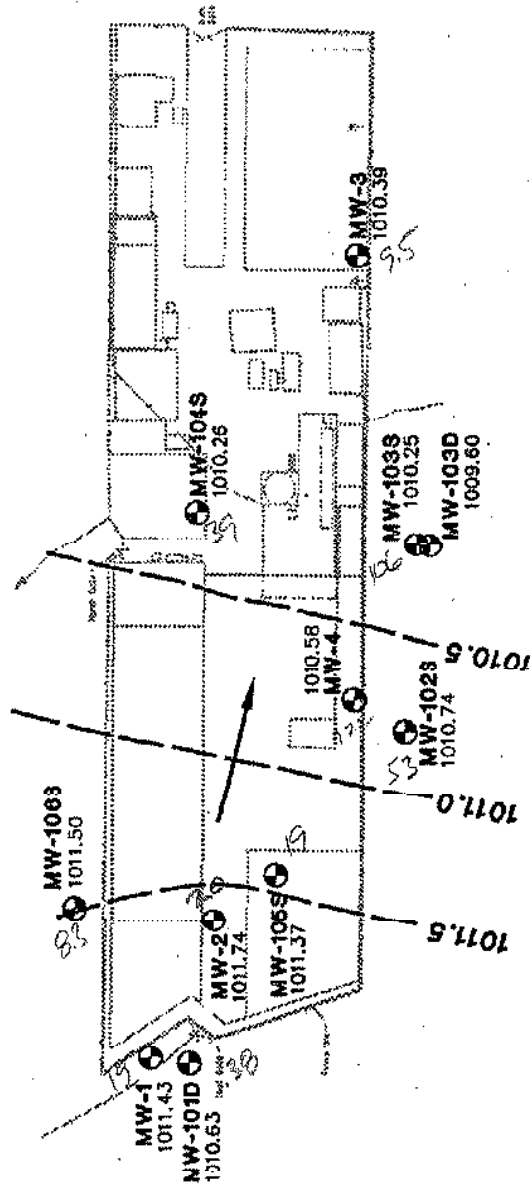
GROUND EL. = 1090.3

LOCAL BENCH MARK: SET SPIKE IN WEST SIDE OF PWR POLE 150' S E'LY OF WELLS. ELEV. = 1090.38

# Groundwater Elevation Contour Map





March 14, 1995 - March 17, 1995

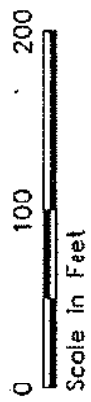
*Chambers Yarrick & Co.*



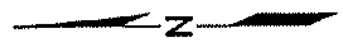
This document was part of the official Administrative Record for the Yuma Railroad Station on October 31, 1996.  
Washington State  
Department of Ecology.

  
**HARTCROWSER**  
J-3791-08 1/96  
Figure 4-2

-  MW-101D Monitoring Well Location and Number
-  1010.63 Groundwater Elevation in Feet
-  1011.5 Groundwater Elevation Contour in Feet
-  Inferred Groundwater Flow Direction

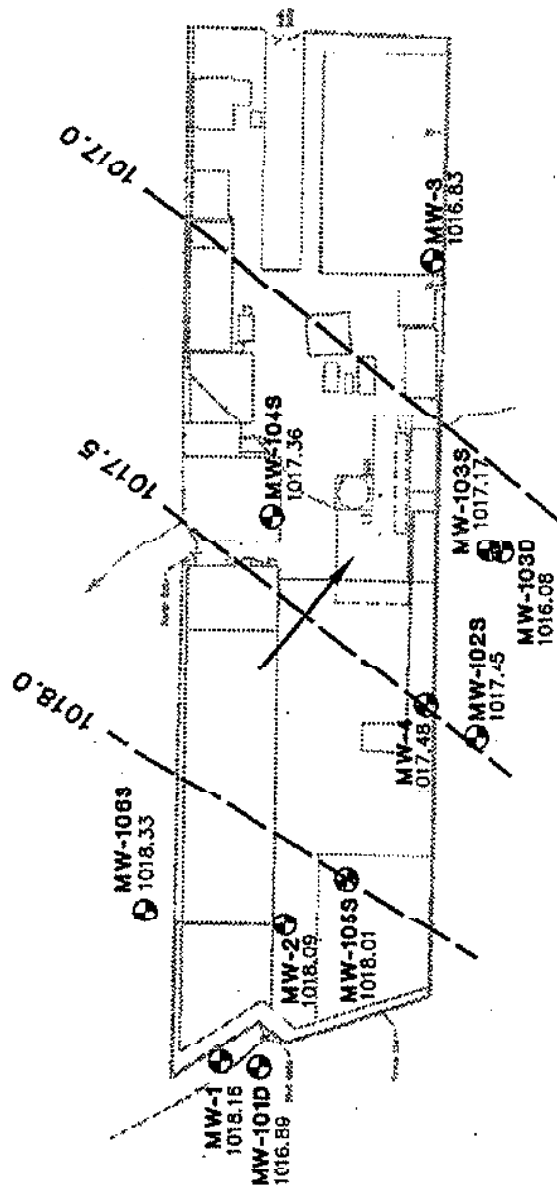


Note: Base Map provided by CXT on AutoCAD.



# Groundwater Elevation Contour Map September 26, 1995 - September 27, 1995

*Catherine YALOWITZ*



This document was part of the official  
Administrative Record for the Yakima  
Railroad as of October 31, 1996.  
Washington State  
Department of Ecology.



**HARTCROWSER**

J-3791-08 1/96

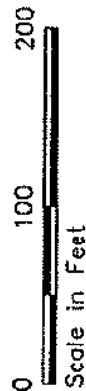
Figure 4-3

MW-101D Monitoring Well Location and Number

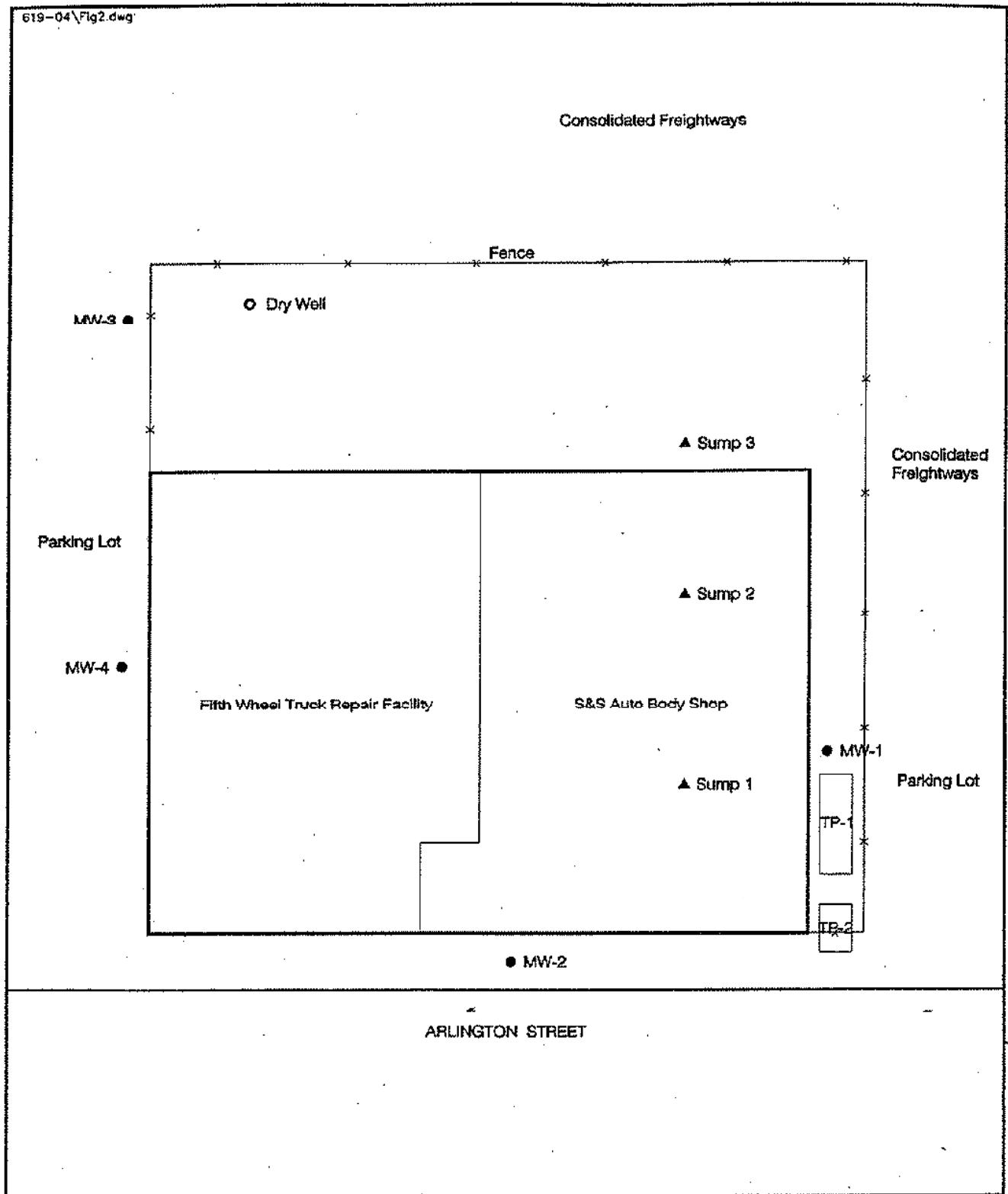
1016.89 Groundwater Elevation in Feet

1017.5 Groundwater Elevation Contour in Feet

Inferred Groundwater Flow Direction



Note: Base Map provided by CMI on AutoCAD.



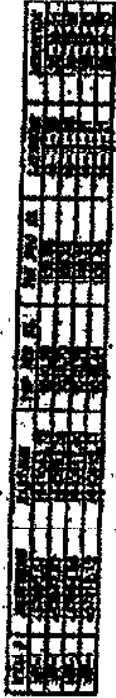
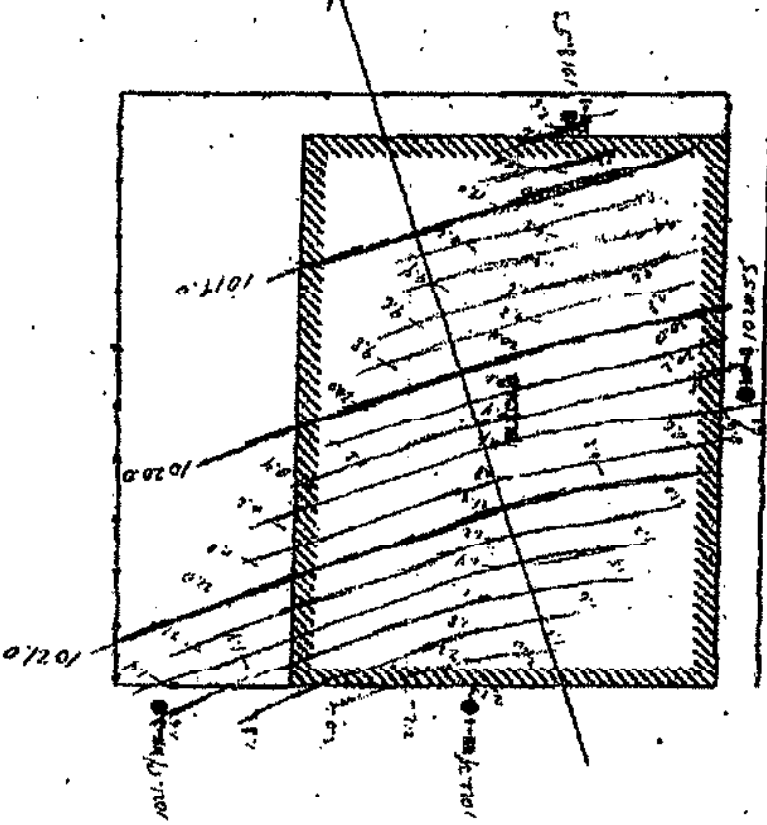
0 Feet 30

- Monitoring Well
- ▲ Sump
- TP-2 Test Pit

Site Map  
Fifth Wheel Truck Repair  
Yakima, Washington  
**FIGURE 2**

Hahn

February 9, 1995  
Flow  
of  
Groundwater

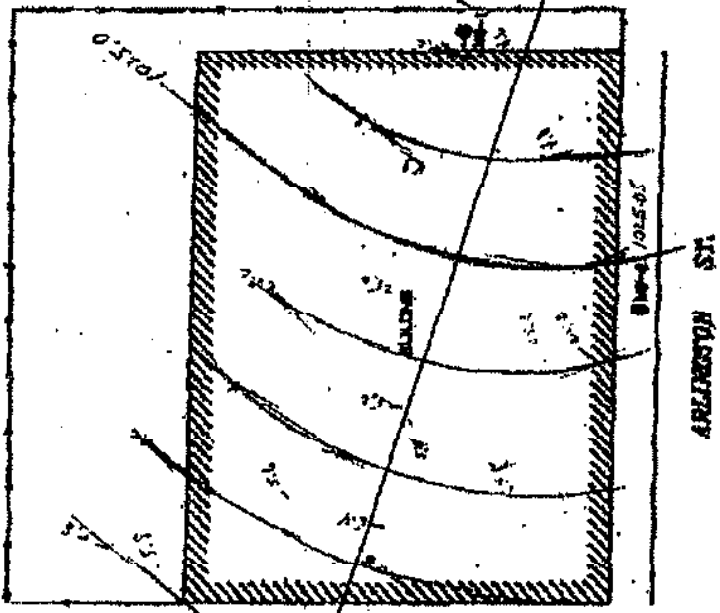


SCALE BAR  
FOOT AND MILLIMETER

CONFIDENTIAL

<p>REGISTERED PROFESSIONAL ENGINEER STATE OF CALIFORNIA No. 10000 Exp. 12/31/95</p>	<p>AUTHOR'S CERTIFICATE I, the undersigned, being a duly licensed Professional Engineer under the laws of the State of California, do hereby certify that the above is a true and correct copy of the original as shown to me.</p> <p>DATE: 2/9/95 SIGNATURE: [Signature]</p>	<p>ENGINEER'S CERTIFICATE I, the undersigned, being a duly licensed Professional Engineer under the laws of the State of California, do hereby certify that the above is a true and correct copy of the original as shown to me.</p> <p>DATE: 2/9/95 SIGNATURE: [Signature]</p>	<p>DATE: 2/9/95 SIGNATURE: [Signature]</p>	<p>DATE: 2/9/95 SIGNATURE: [Signature]</p>	<p>HUNTINGDON ENGINEERING 10000 10000 10000</p>
---	---	---	--	--	---

Hahn  
 Aug 29, 1995



1015.0	1015.5	1016.0	1016.5	1017.0
1015.0	1015.5	1016.0	1016.5	1017.0
1015.0	1015.5	1016.0	1016.5	1017.0
1015.0	1015.5	1016.0	1016.5	1017.0
1015.0	1015.5	1016.0	1016.5	1017.0
1015.0	1015.5	1016.0	1016.5	1017.0
1015.0	1015.5	1016.0	1016.5	1017.0
1015.0	1015.5	1016.0	1016.5	1017.0
1015.0	1015.5	1016.0	1016.5	1017.0
1015.0	1015.5	1016.0	1016.5	1017.0

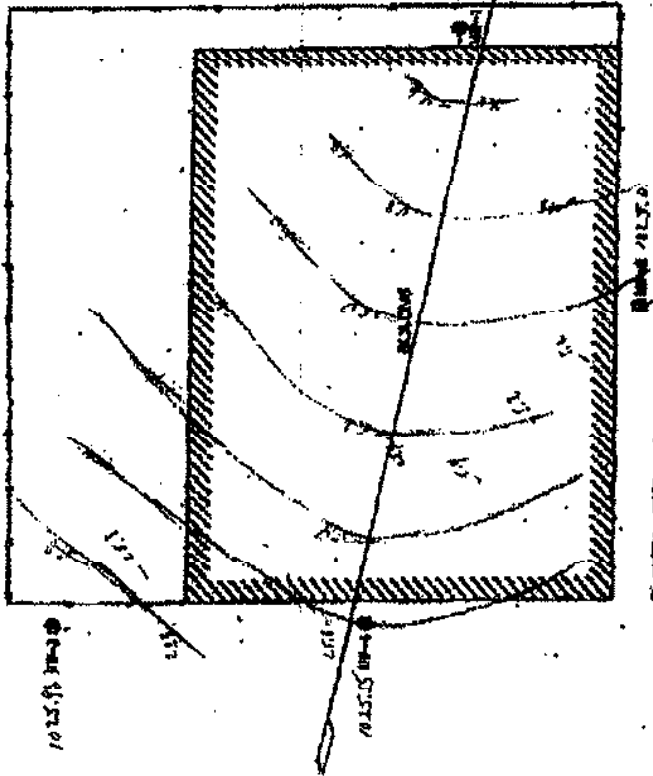
DATE: 8/29/95  
 DRAWN BY: HAHN

CONFIDENTIAL

HUNTINGDON ENGINEERING 1000 W. 10TH ST. SUITE 100 PITTSBURGH, PA 15222 TEL: 412-281-1111 FAX: 412-281-1112	
I HEREBY CERTIFY THAT THE ABOVE INFORMATION IS TRUE AND CORRECT TO THE BEST OF MY KNOWLEDGE AND BELIEF.	GUY A. HAHN PROJECT MANAGER
I HEREBY CERTIFY THAT THE ABOVE INFORMATION IS TRUE AND CORRECT TO THE BEST OF MY KNOWLEDGE AND BELIEF.	GUY A. HAHN PROJECT MANAGER
I HEREBY CERTIFY THAT THE ABOVE INFORMATION IS TRUE AND CORRECT TO THE BEST OF MY KNOWLEDGE AND BELIEF.	GUY A. HAHN PROJECT MANAGER



Hahn  
Sep 5, 1995



WATER MAIN  
2000' - 400' TRENCHING DIST.

Direction of  
Groundwater Flow

ARLINGTON ST.

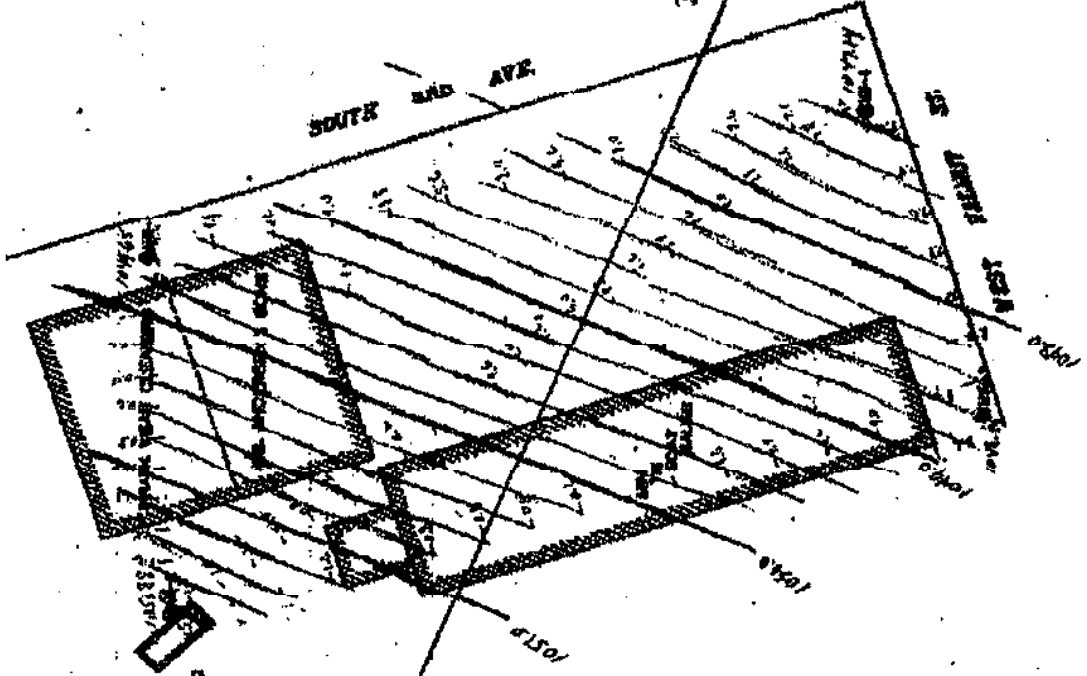
<p>STATE OF CALIFORNIA DEPARTMENT OF WATER RESOURCES DIVISION OF WATER CONTROL</p>	<p>AUDITOR'S CERTIFICATE I have examined the accounts of the above named person or entity for the period from [ ] to [ ] and find that the same are correct and agree with the books and records of the same.</p> <p>DATE: [ ] BY: [ ]</p>	<p>SUPERVISOR'S CERTIFICATE I have examined the accounts of the above named person or entity for the period from [ ] to [ ] and find that the same are correct and agree with the books and records of the same.</p> <p>DATE: [ ] BY: [ ]</p>	<p>OPERATOR'S CERTIFICATE I have examined the accounts of the above named person or entity for the period from [ ] to [ ] and find that the same are correct and agree with the books and records of the same.</p> <p>DATE: [ ] BY: [ ]</p>	<p>SCALE 1" = 20'</p>	<p>HUMPHREYS ENGINEERING 1111 1/2 ST. [ ] [ ] [ ] [ ]</p>
--	--	---	---	---------------------------	---

SP 6, 1995  
Frank. Wear



SECTION MARK  
EAST AND WEST

Direction of Groundwater Flow

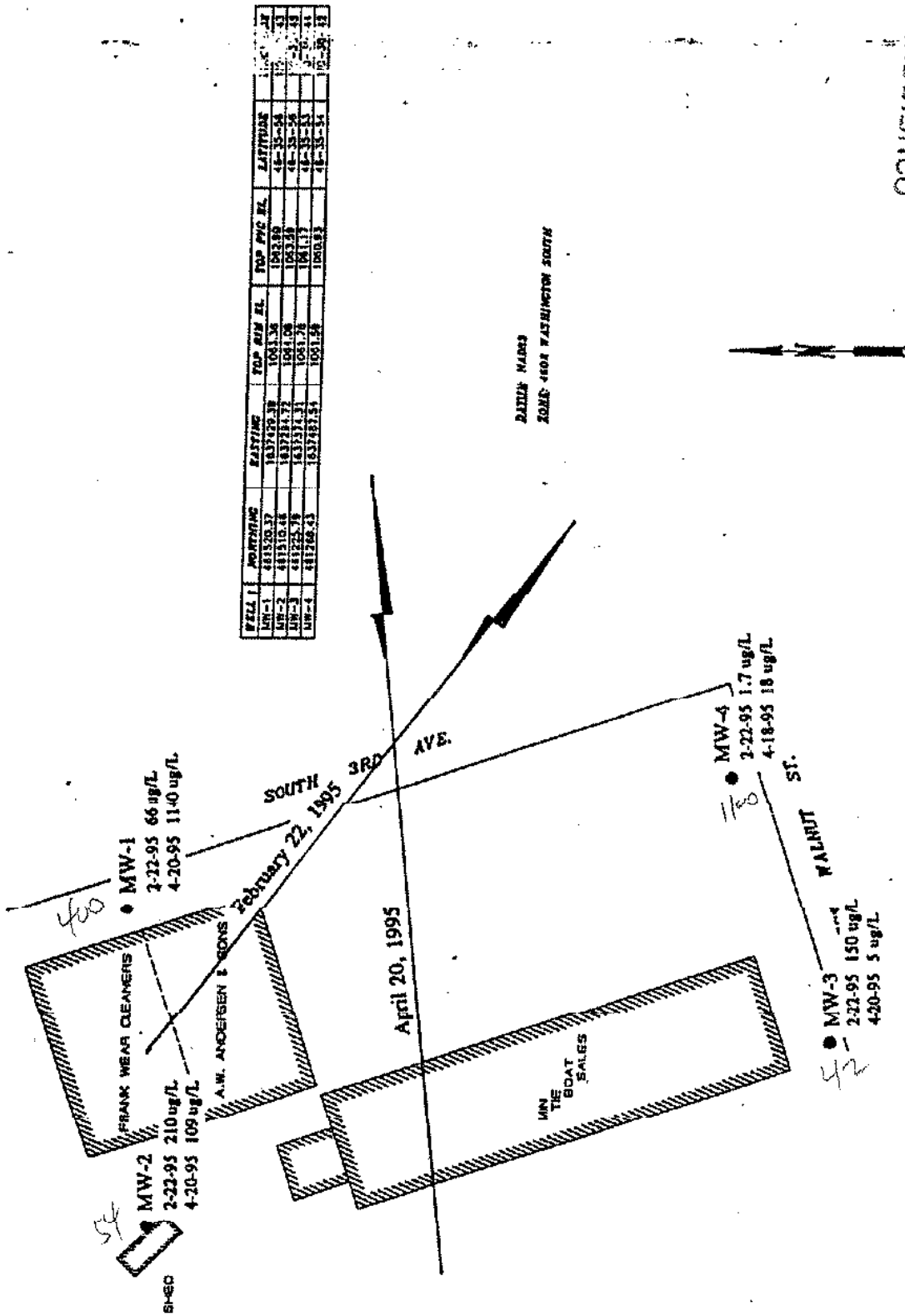


CONFIDENTIAL



<p>AMERICAN ENGINEERING &amp; SURVEYING COMPANY 1000 15th Street, N.W. Washington, D.C. 20004 Tel: (202) 462-1000</p>	<p>AUDITOR'S CERTIFICATE I have examined the above account and find it correct and agreeable to the books and records of the company.</p> <p>DATE: 11/15/95</p>	<p>SURVEYOR'S CERTIFICATE I have surveyed the above account and find it correct and agreeable to the books and records of the company.</p> <p>DATE: 11/15/95</p>	<p>CONTRACTOR'S CERTIFICATE I have constructed the above account and find it correct and agreeable to the books and records of the company.</p> <p>DATE: 11/15/95</p>	<p>ENGINEER'S CERTIFICATE I have designed the above account and find it correct and agreeable to the books and records of the company.</p> <p>DATE: 11/15/95</p>	<p>HILLMAN ENGINEERING 1000 15th Street, N.W. Washington, D.C. 20004 Tel: (202) 462-1000</p>
---	---	--	---	--	--

Work Map



WELL ID	POINTING	EASTING	TOP SURV EL.	TOP PVC EL.	LATITUDE	DATE
MW-1	481520.37	153719.39	1061.36	1062.86	48-35-34	95
MW-2	481510.44	153719.77	1061.06	1062.56	48-35-34	95
MW-3	481225.18	153714.23	1061.76	1061.17	48-35-34	95
MW-4	481206.23	153748.51	1061.54	1060.83	48-35-34	95

CONFIDENTIAL

FIGURE 2: GROUNDWATER FLOW DIRECTIONS AND PCE CONCENTRATIONS IN ug/L (ppb)

**LEGEND AND PROCEDURES:**  
 1: SEC. FOR TOTAL STARDI  
 2: FIELD INVERSE

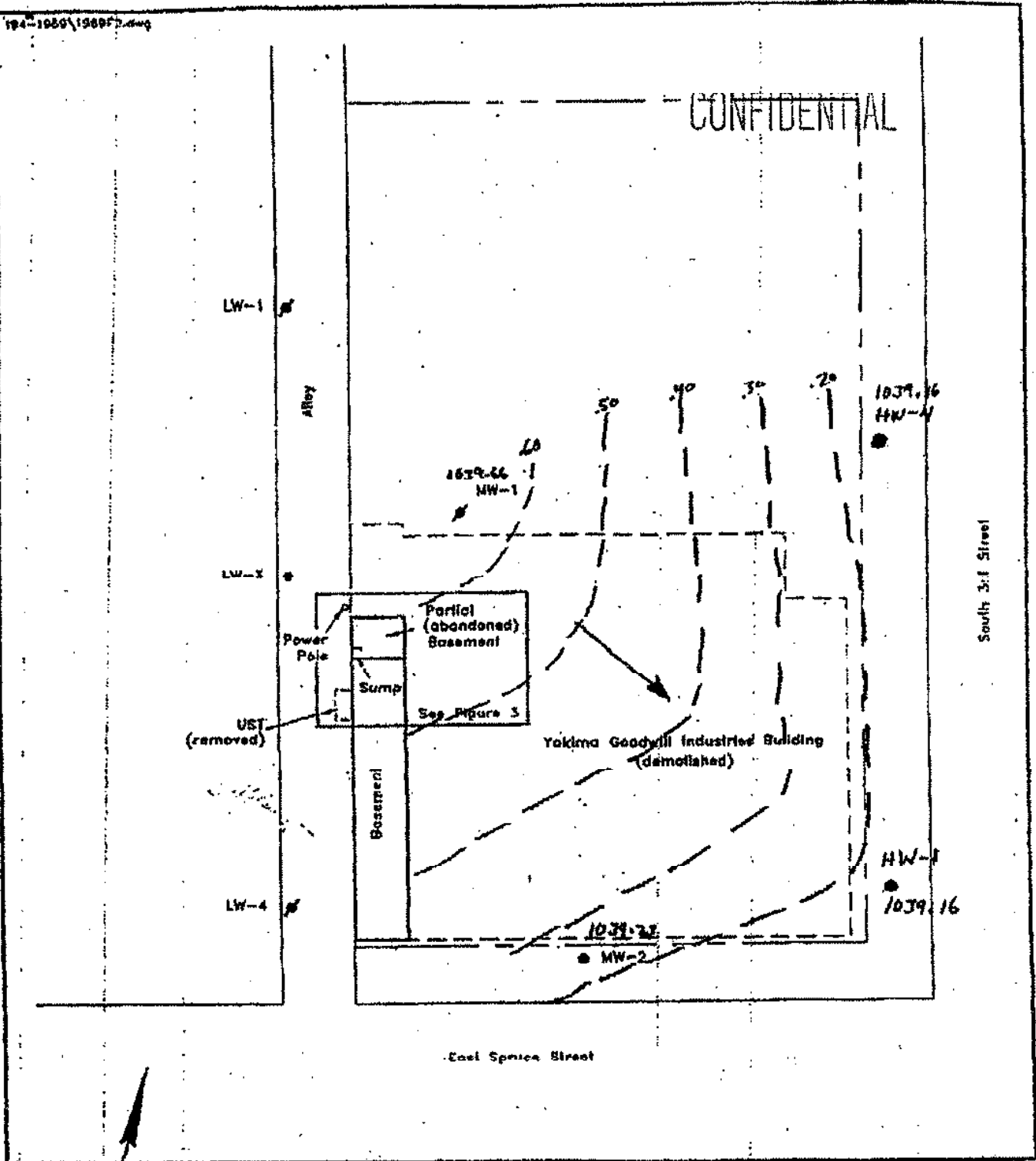
**AUDITOR'S CERTIFICATE**  
 FILED FOR RECORD THIS \_\_\_\_\_ DAY OF \_\_\_\_\_ 19\_\_

**SURVEYOR'S CERTIFICATE**  
 THIS MAP CORRECTLY REPRESENTS A \_\_\_\_\_

**HUNTINGDON ENGINEERING**

104-1060\1060F2.dwg

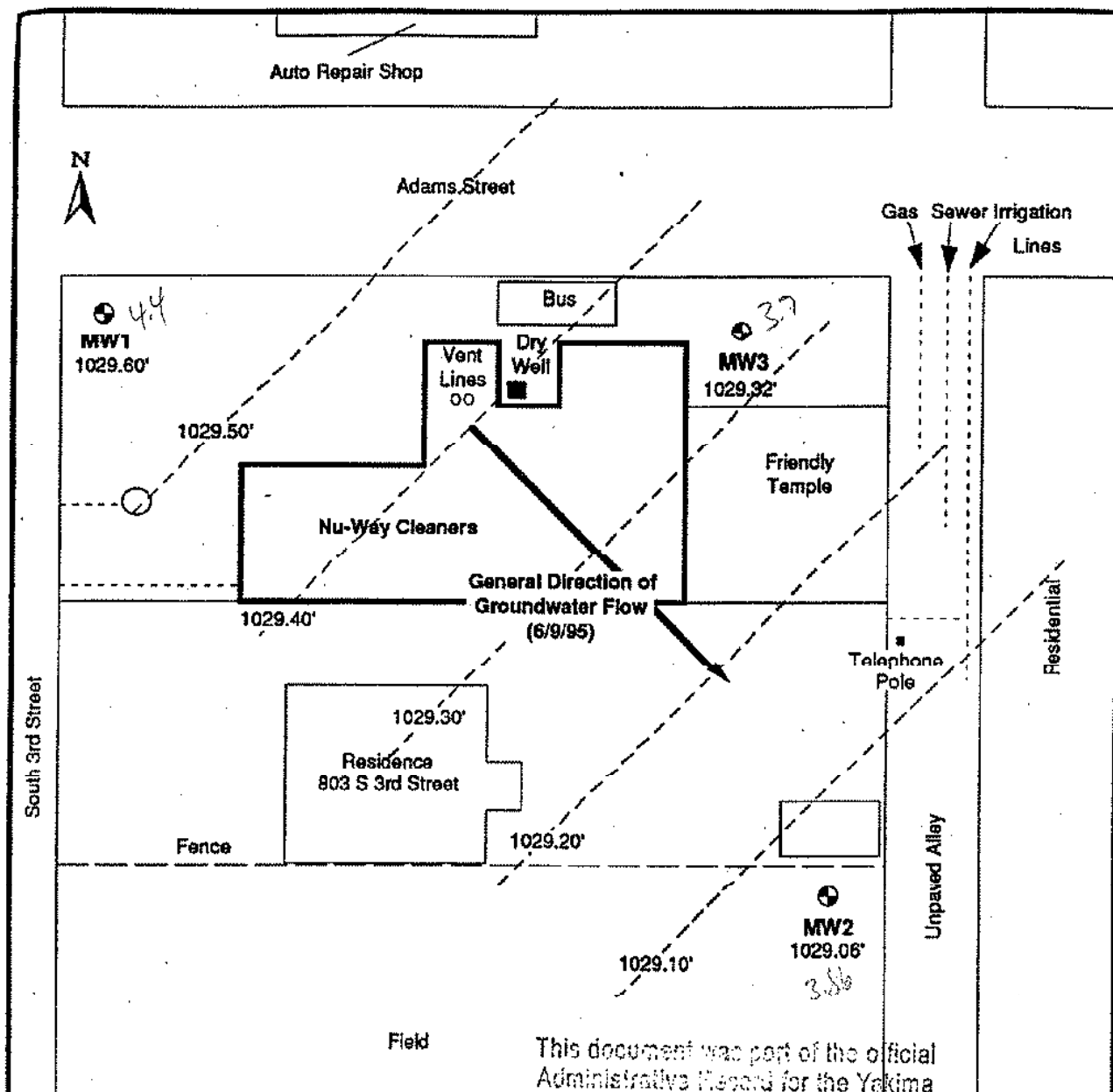
CONFIDENTIAL



NE&E 104-1060 - 1


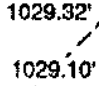
- Groundwater Gradient
- Monitoring Well
- Abandoned Well
- Proposed Well

Site Map  
 Yakima Goodwill Industries  
 222 South 3rd Street  
 Yakima, Washington  
 FIGURE 2



This document was part of the official  
 Administrative Record for the Yakima  
 Remedial Area on October 31, 1995.

**Legend:**

- 
 Monitoring Well Locations with groundwater elevation on June 9, 1995.
- 
 MW2  
 1029.32'  
 1029.10' Groundwater hydraulic head contour

Washington State  
 Department of Ecology.

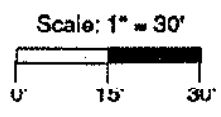


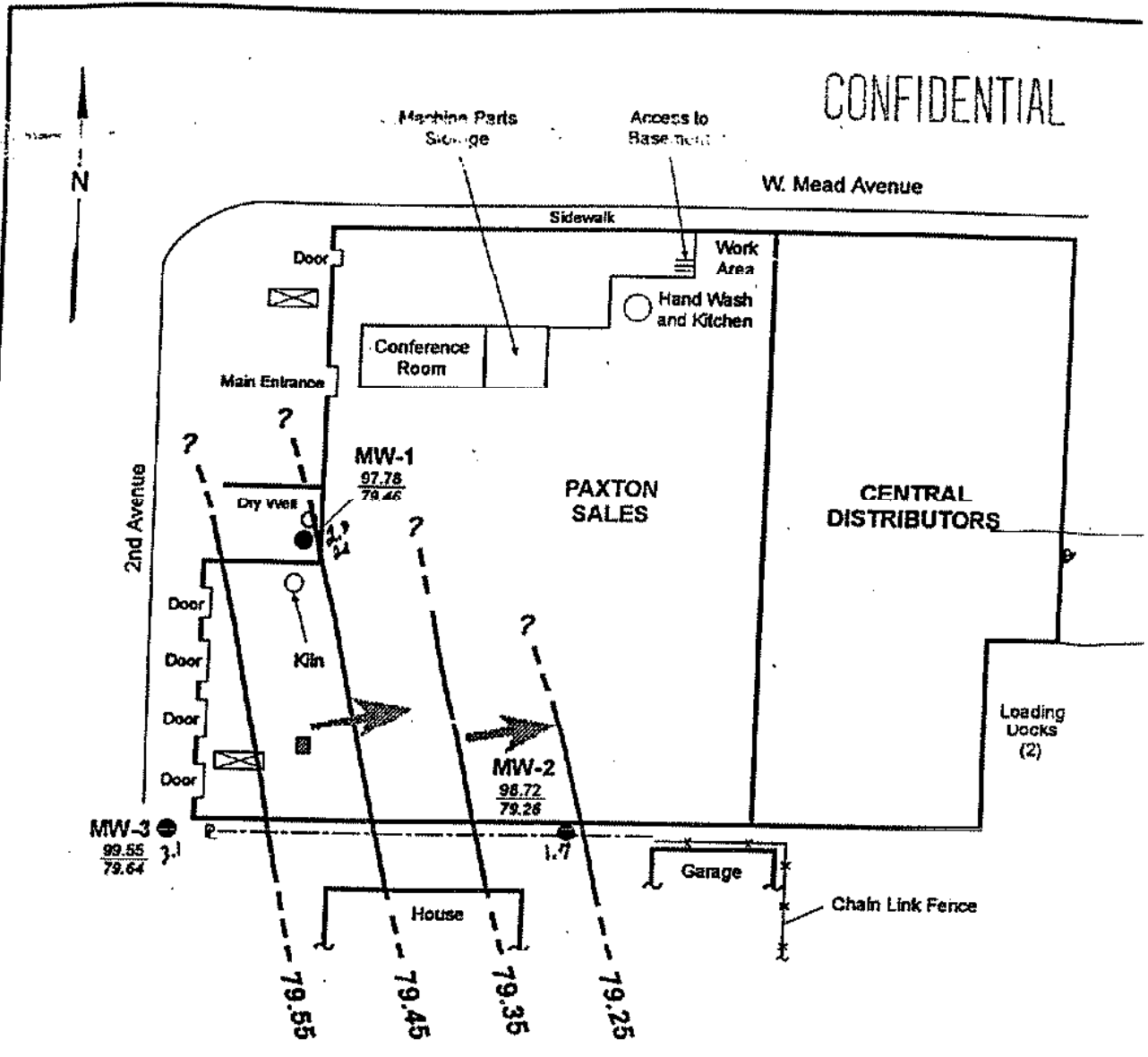
Figure 6. Groundwater Flow Direction for the Nu-Way Cleaner Site Located at 801 South 3rd Street, Yakima, Yakima County, Washington.

**enviros**<sup>®</sup>  
 E1/950109

Drawn By: AIS Date: 6/21/95

Approved By: *Kov* Date: *6/29/95*

CONFIDENTIAL



KEY

- MW-1 Monitoring Well Location and Identification
- ⊠ Estimated Location of Abandoned In-Place UST
- 79.25 - - - - - Approximate Groundwater Contour
- 97.78 — PVC Casing Elevation (ft)
- 79.78 — Groundwater Elevation (ft), Measured 2/27/05
- ➔ Approximate Direction of Groundwater Flow



Notes: 1. This site plan is based on "rag tape" measurements. It should be used as a source of general information only.  
 2. Property line is approximate.

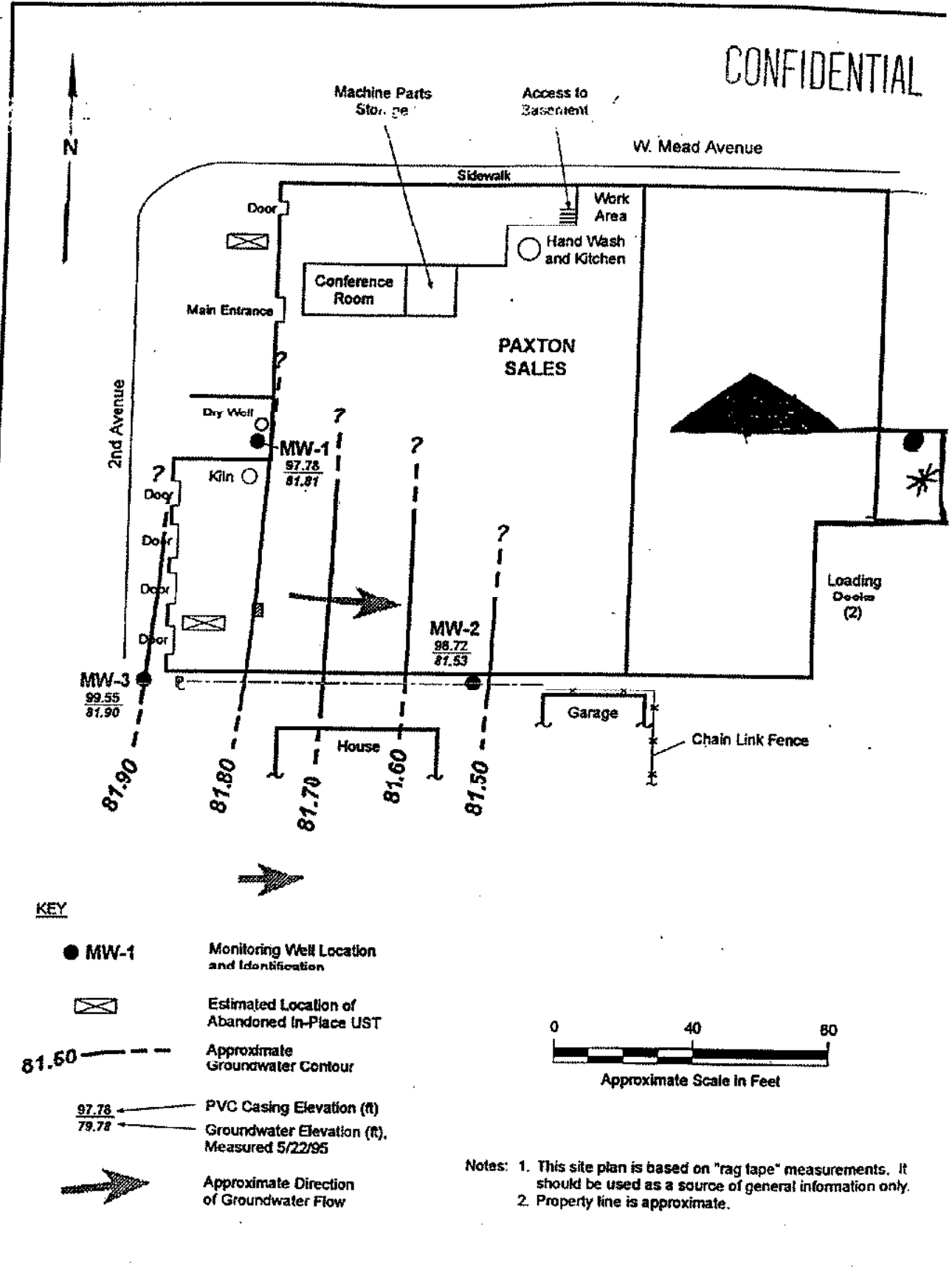
275002.20 Paxton Sales/Summary Letter (M) 506



Groundwater Flow Gradient - February 1995

Figure 3

CONFIDENTIAL



KEY

- MW-1 Monitoring Well Location and Identification
- ⊠ Estimated Location of Abandoned In-Place UST
- 81.50 - - - - - Approximate Groundwater Contour
- $\frac{97.78}{79.78}$  PVC Casing Elevation (ft)  
Groundwater Elevation (ft), Measured 5/22/95
- ➔ Approximate Direction of Groundwater Flow



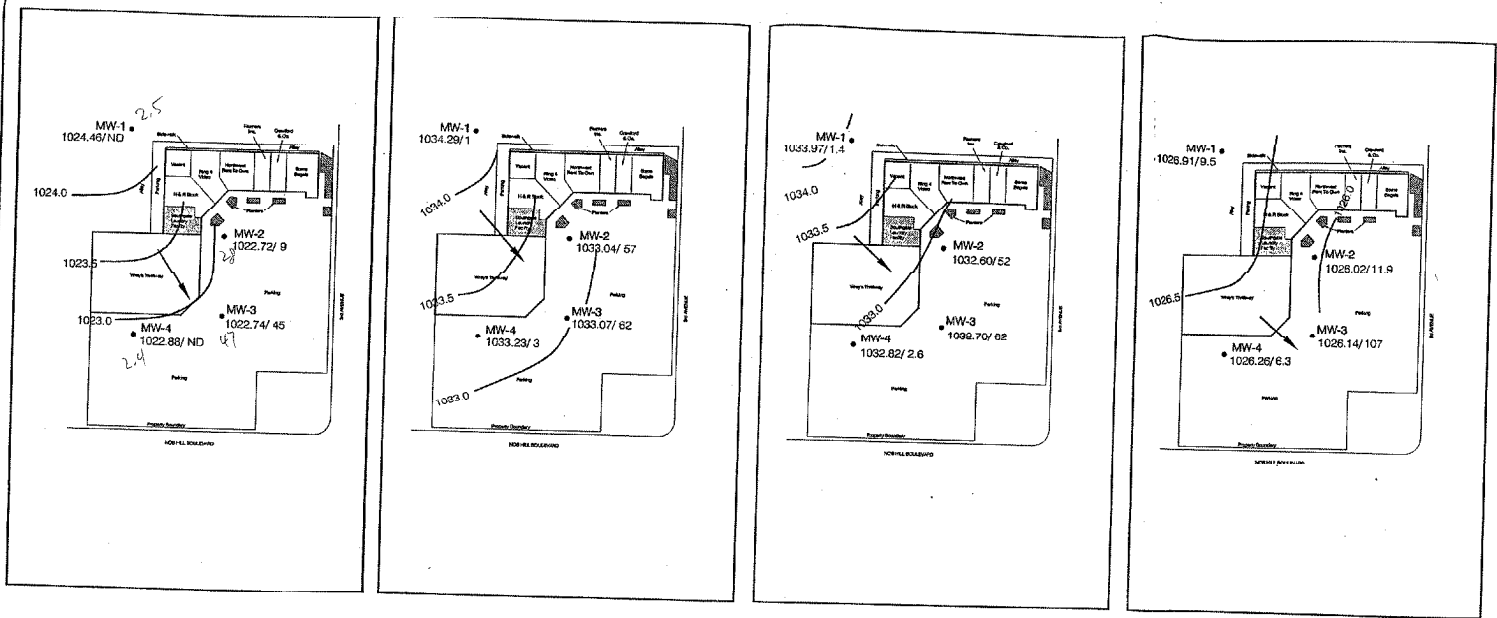
Notes: 1. This site plan is based on "rag tape" measurements. It should be used as a source of general information only.  
2. Property line is approximate.

25002.20 Paxton Sales/Summary Letter (M) 5/95



Groundwater Flow Gradient - May 1995

Figure 4

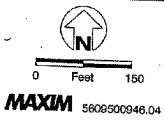


APRIL 9, 1996

JULY 15, 1996

OCTOBER 1996

FEBRUARY 5, 1997



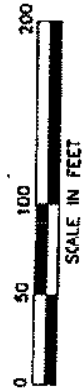
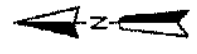
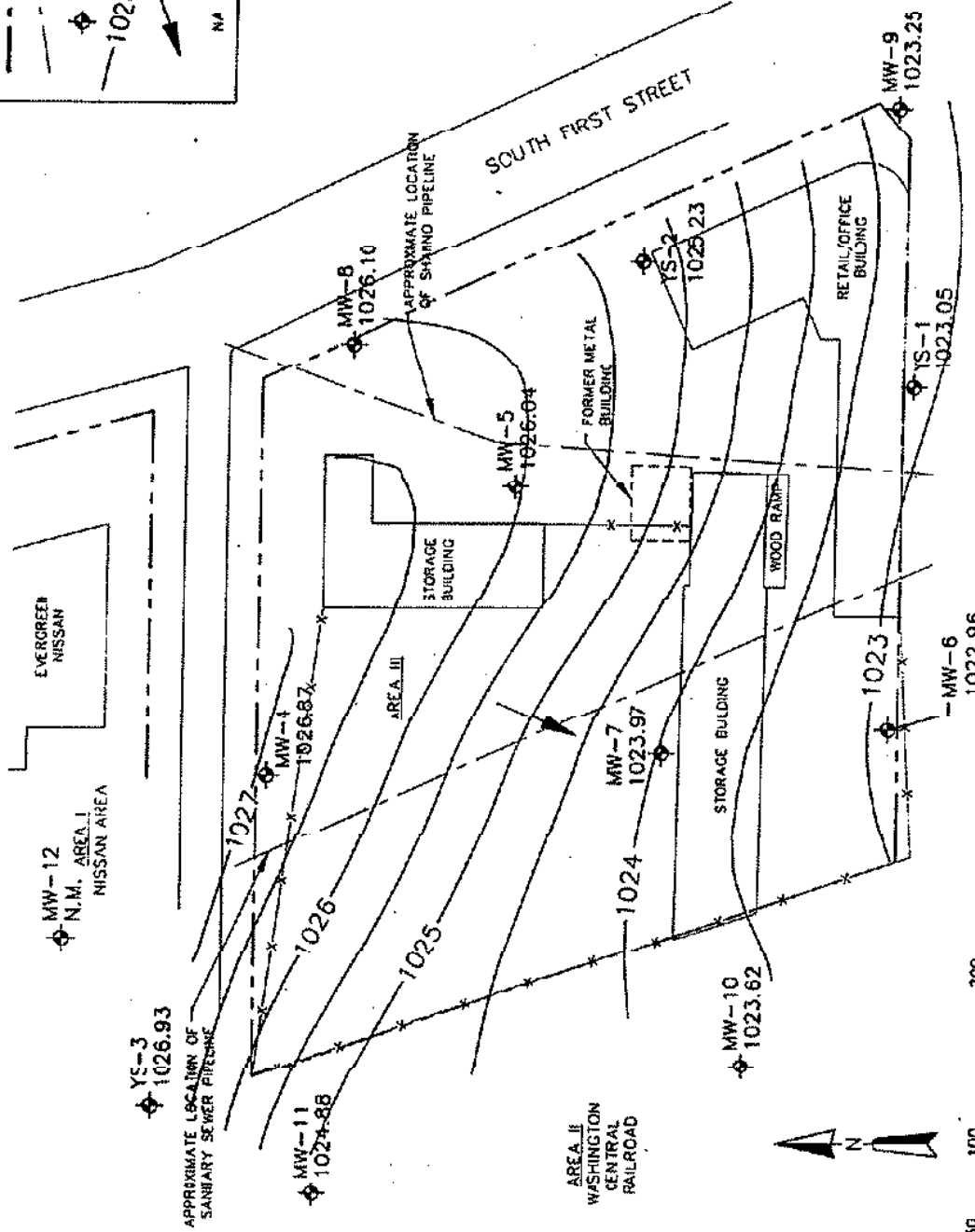
- Groundwater Elevation Equipotential Line (ft)
- 1022.74/ 45 Groundwater Elevation (ft)/ PCE concentration in groundwater (ppb)
- Groundwater Flow Direction

Groundwater Elevation Map  
And PCE Concentrations in Groundwater  
Southgate Laundry  
Yakima, Washington  
FIGURE 5



**LEGEND**

- PROPERTY BOUNDARY
- PIPELINE
- ⊕ MONITORING WELL
- POTENTIOMETRIC SURFACE CONTOUR
- ↖ GENERAL DIRECTION OF GROUNDWATER FLOW
- NA NOT AVAILABLE



CONFIDENTIAL



POTENTIOMETRIC CONTOUR MAP  
12/08/92

SCALE 1" = 100'

SUPPLEMENTAL RI

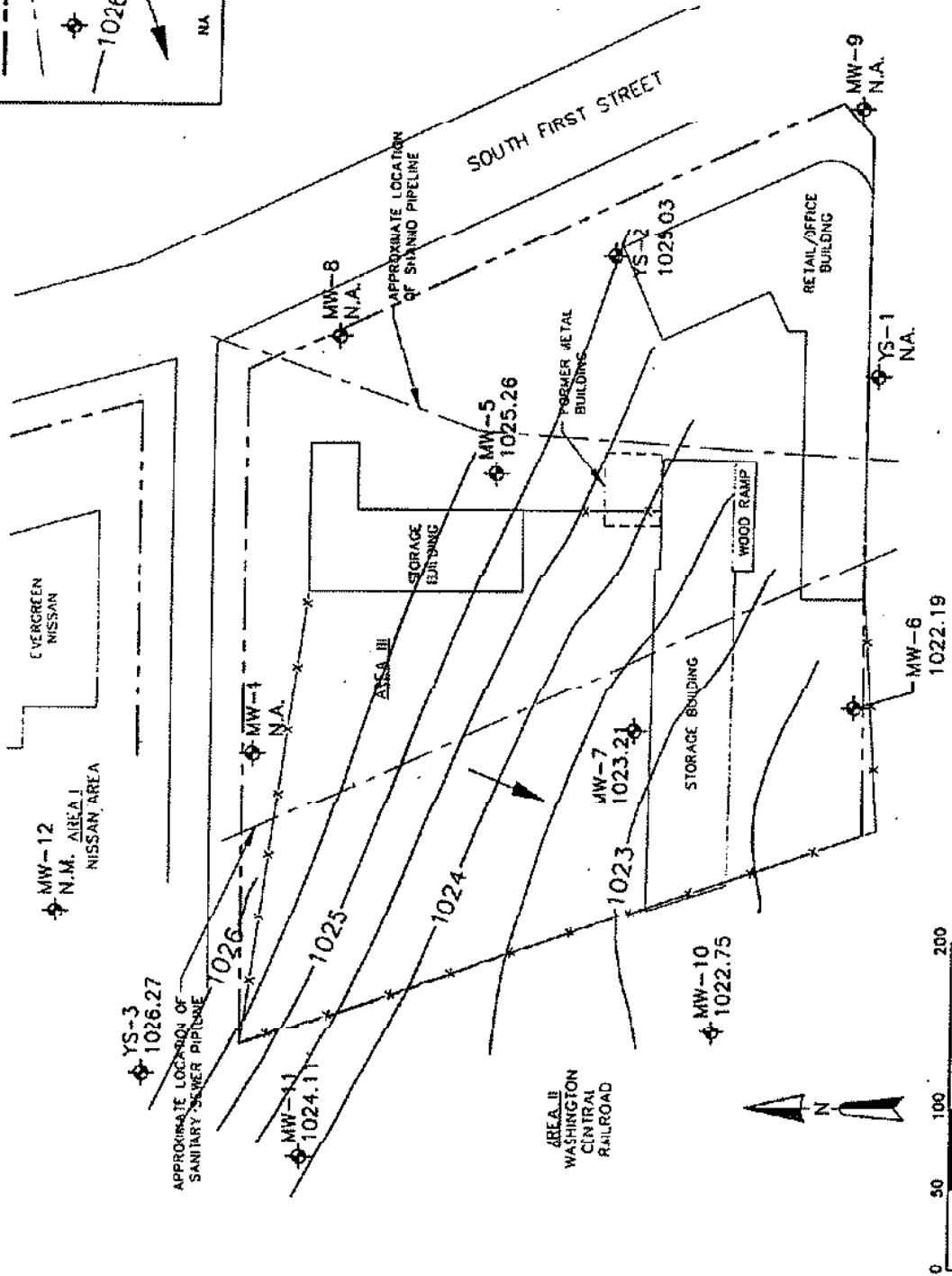
3-1070-680

REV 04/93

**LEGEND**

- PROPERTY BOUNDARY
- PIPELINE
- ⊕ MONITORING WELL
- POTENTIOMETRIC SURFACE CONTOUR
- ↖ GENERAL DIRECTION OF GROUNDWATER FLOW
- NA NOT AVAILABLE

CONFIDENTIAL



POTENTIOMETRIC CONTOUR MAP  
1/06/93



SCALE 1" = 100'

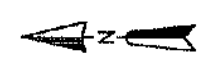
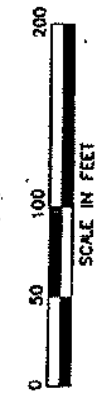
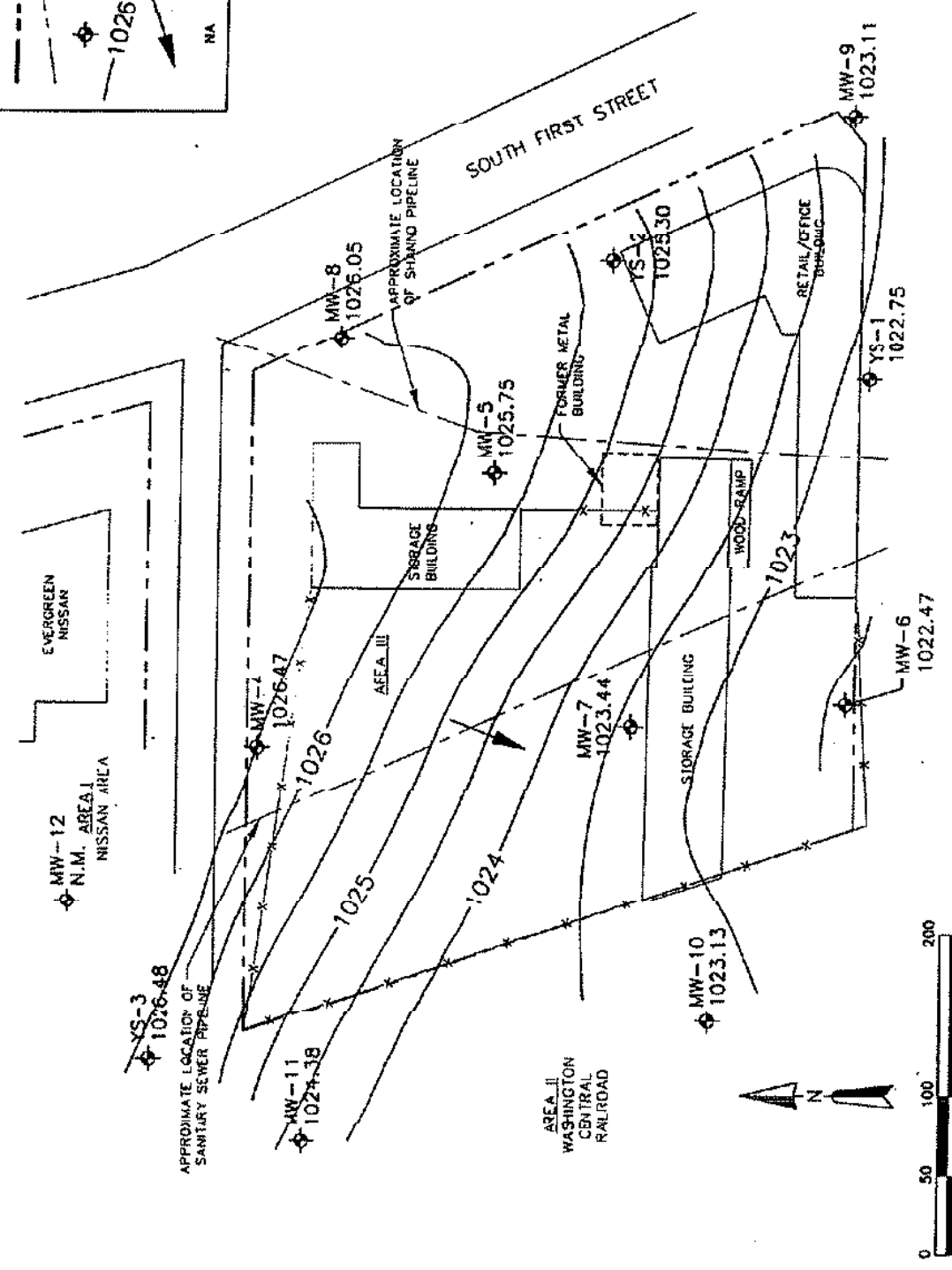
SUPPLEMENTAL RI

3-1070-090

REV DATE DESC

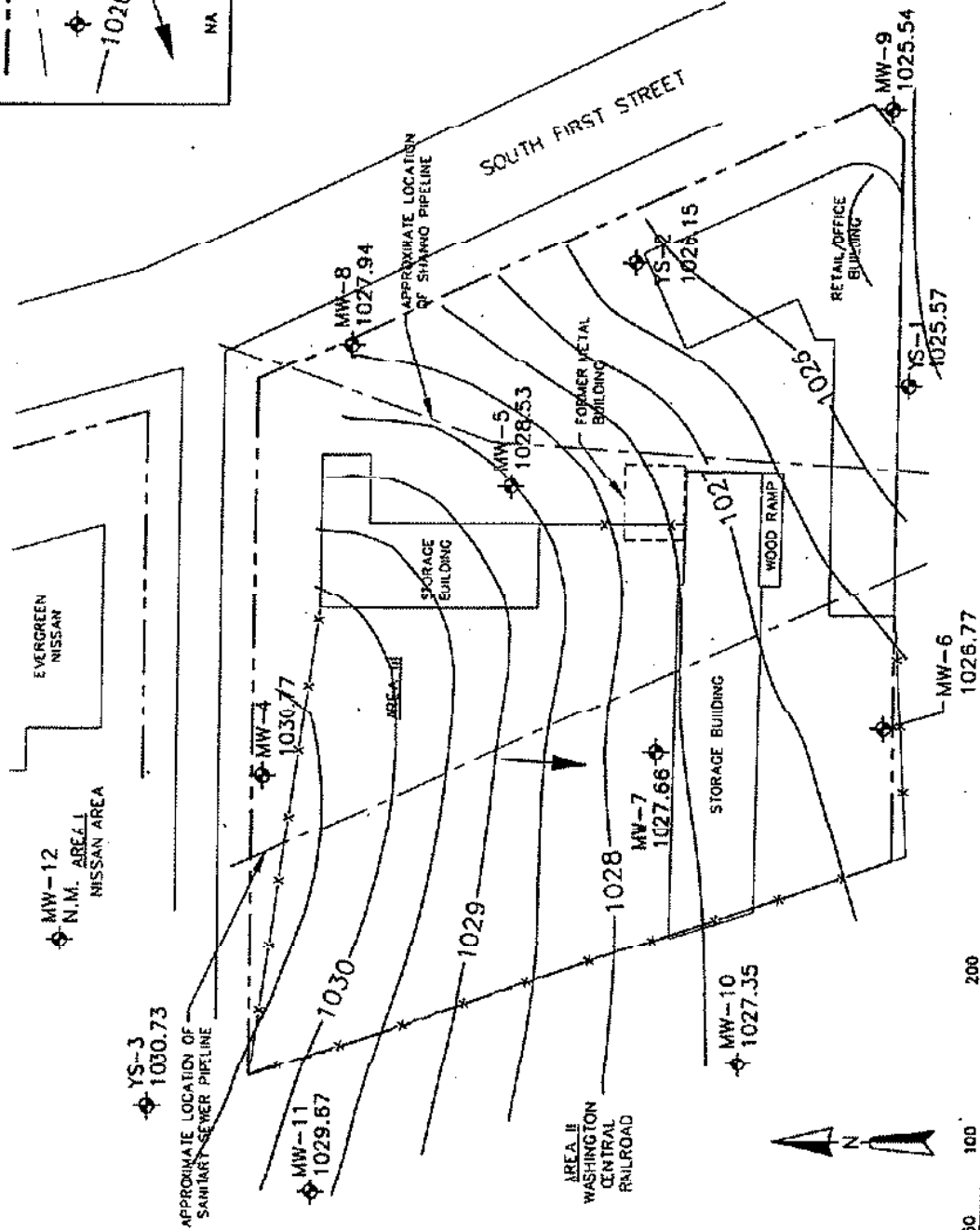
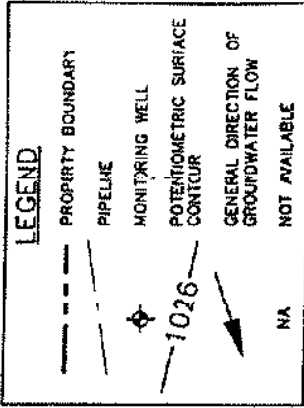
**LEGEND**

- PROPERTY BOUNDARY
- - - PIPELINE
- ⊕ MONITORING WELL
- - - POTENTIOMETRIC SURFACE CONTOUR
- ↖ GENERA. DIRECTION OF GROUNDWATER FLOW
- NA NOT AVAILABLE



CONFIDENTIAL

<p>REF: DWG 001C</p>		<p>SCALE 1" = 100'</p>	<p>POTENTIOMETRIC CONTOUR MAP 3/04/93</p>	
<p>SUPPLEMENTAL RI</p>		<p>3-1071-890</p>		



CONFIDENTIAL



POTENTIOMETRIC CONTOUR MAP  
5/25/93

SCALE 1" = 100'

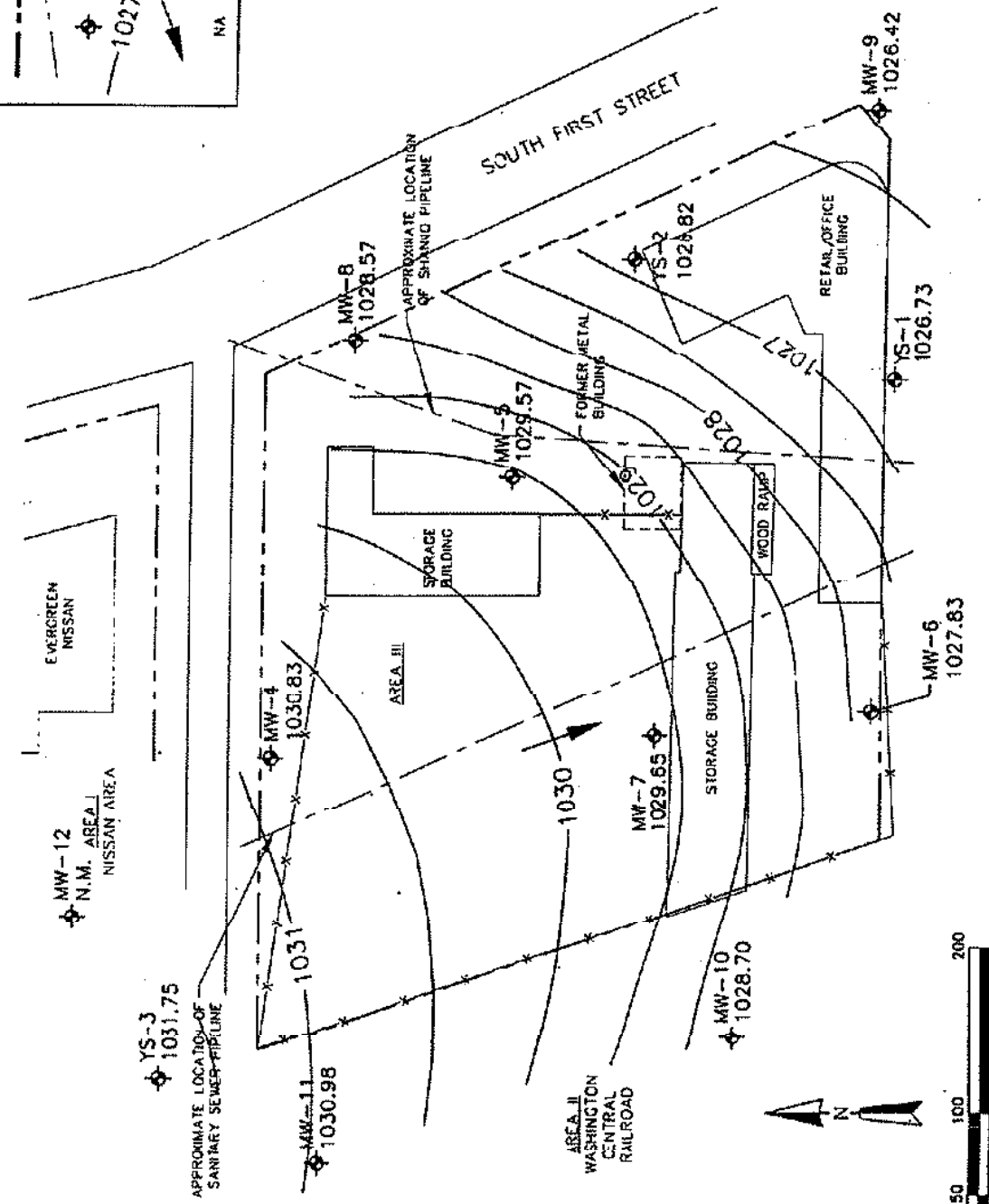
SUPPLEMENTAL RI

3-100-690

REV	DATE	DESC.

**LEGEND**

- PROPERTY BOUNDARY
- PIPELINE
- ◆ MONITORING WELL
- POTENTIOMETRIC SURFACE
- GENERAL DIRECTION OF GROUNDWATER FLOW
- NA NOT AVAILABLE



CONFIDENTIAL



POTENTIOMETRIC CONTOUR MAP  
6/19/93

SCALE 1" = 100'

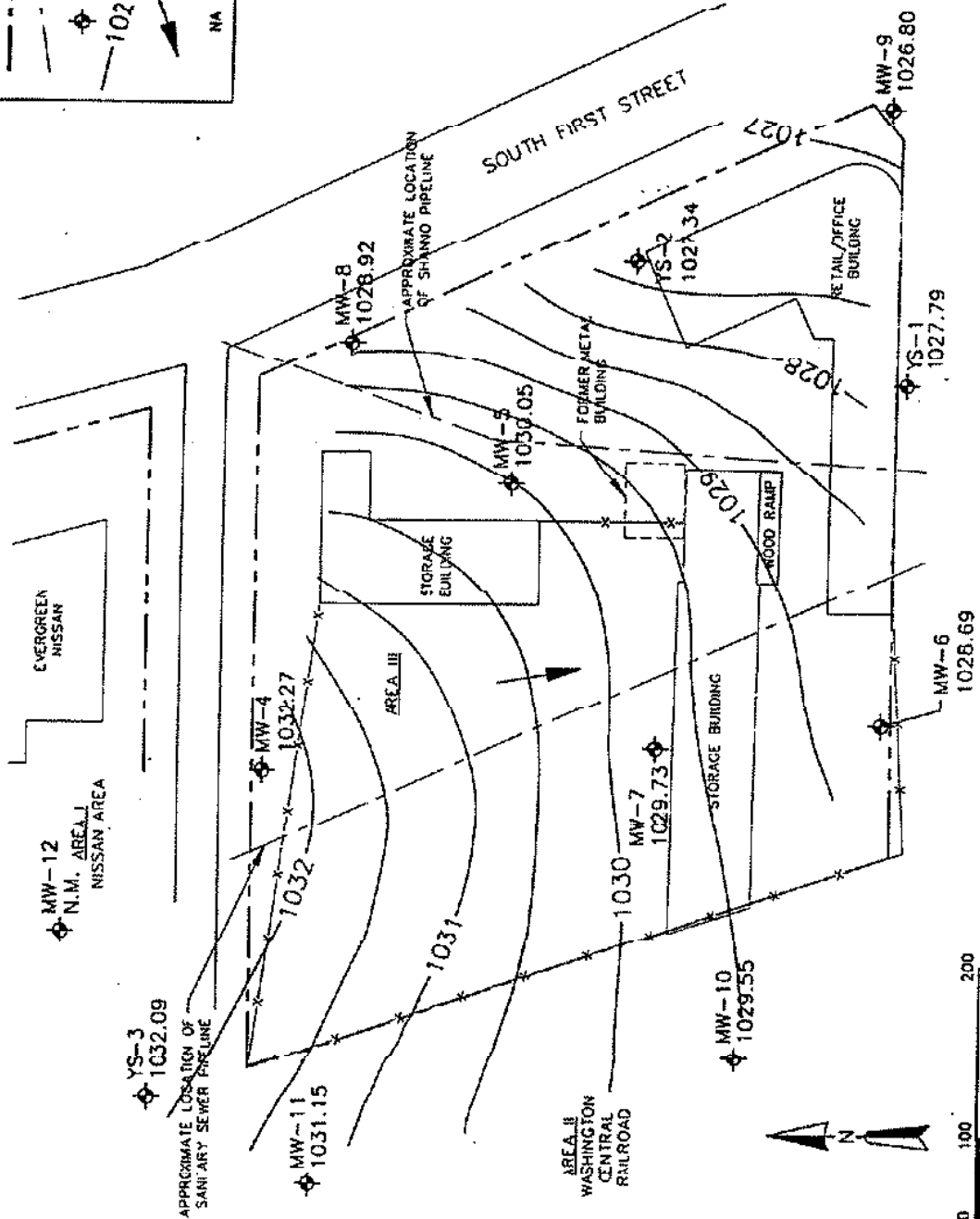
SUPPLEMENTAL RI

1-1000-890

REV ONE EXC.

**LEGEND**

- PROPERTY BOUNDARY
- - - PIPELINE
- ◆ MONITORING WELL
- POTENTIOMETRIC SURFACE CONTOUR
- GENERAL DIRECTION OF GROUNDWATER FLOW
- NA NOT AVAILABLE



CONFIDENTIAL



POTENTIOMETRIC CONTOUR MAP  
7/31/93

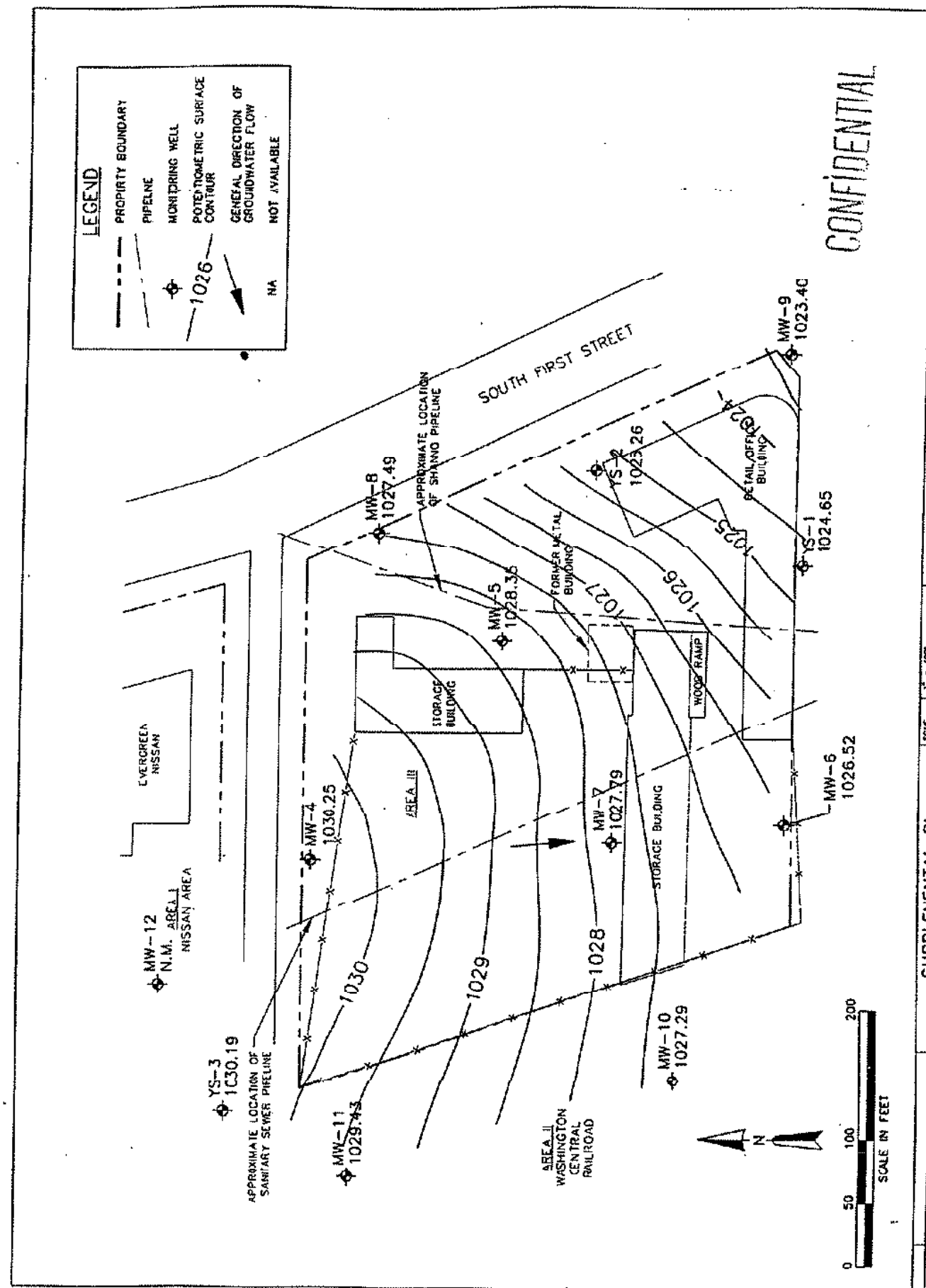
SUPPLEMENTAL RI

3-100-690

REV	DATE	DESC.

**LEGEND**

- PROPERTY BOUNDARY
- PIPELINE
- ⊕ MONITORING WELL
- POTENTIOMETRIC SURFACE CONTOUR
- ↖ GENERAL DIRECTION OF GROUNDWATER FLOW
- NA NOT AVAILABLE



CONFIDENTIAL



POTENTIOMETRIC CONTOUR MAP  
11/02/93

SCALE 1" = 100'

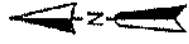
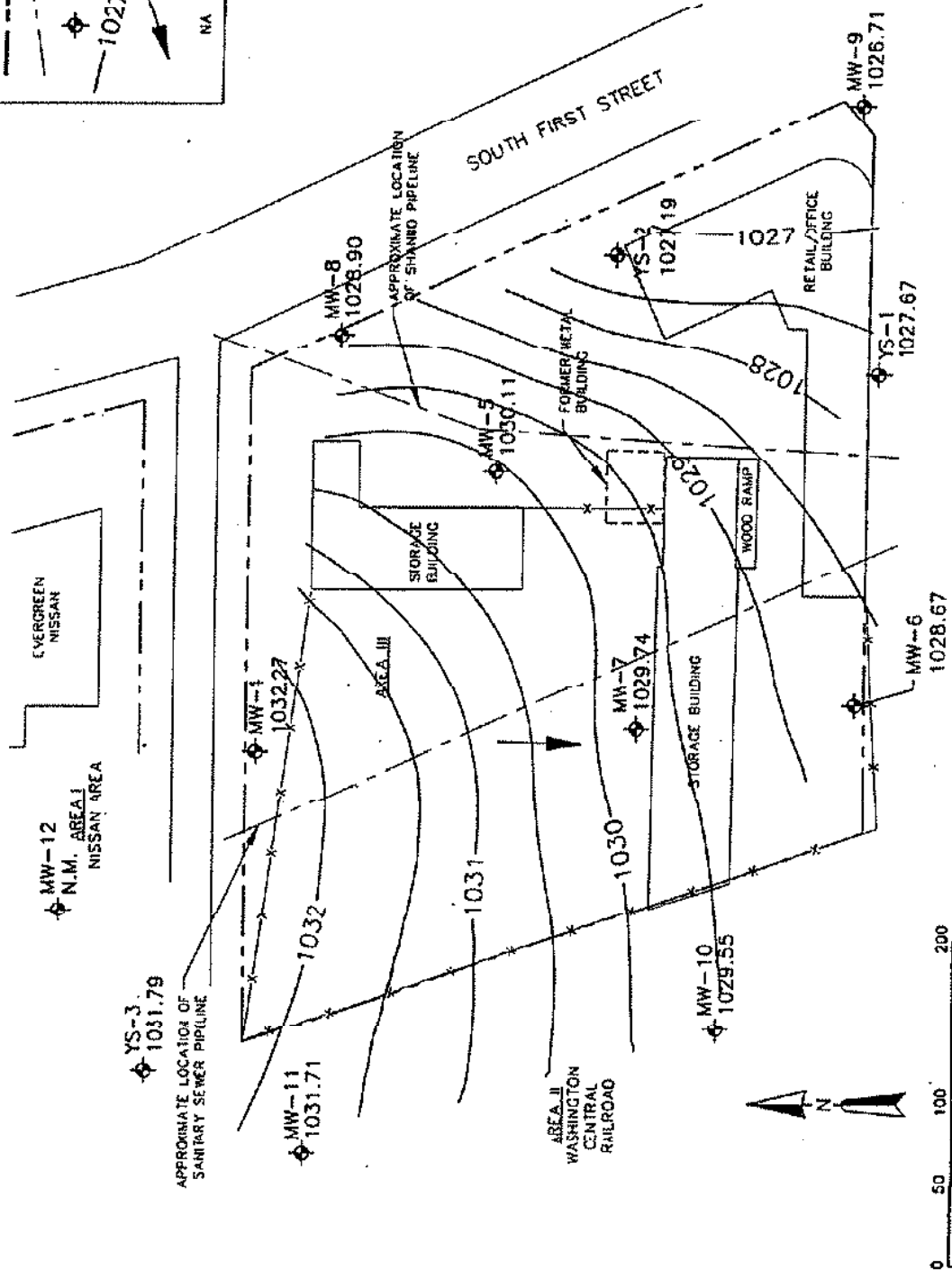
SUPPLEMENTAL RI

3-1070-690

REF ENG 555C

**LEGEND**

- PROPERTY BOUNDARY
- - - PIPELINE
- ⊕ MONITORING WELL
- - - POTENTIOMETRIC SURFACE CONTOUR
- ↘ GENERAL DIRECTION OF GROUNDWATER FLOW
- NA NOT AVAILABLE



CONFIDENTIAL

**ARLICO**

POTENTIOMETRIC CONTOUR MAP  
8/30/93

SUPPLEMENTAL RI

SCALE 1" = 100'

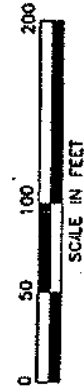
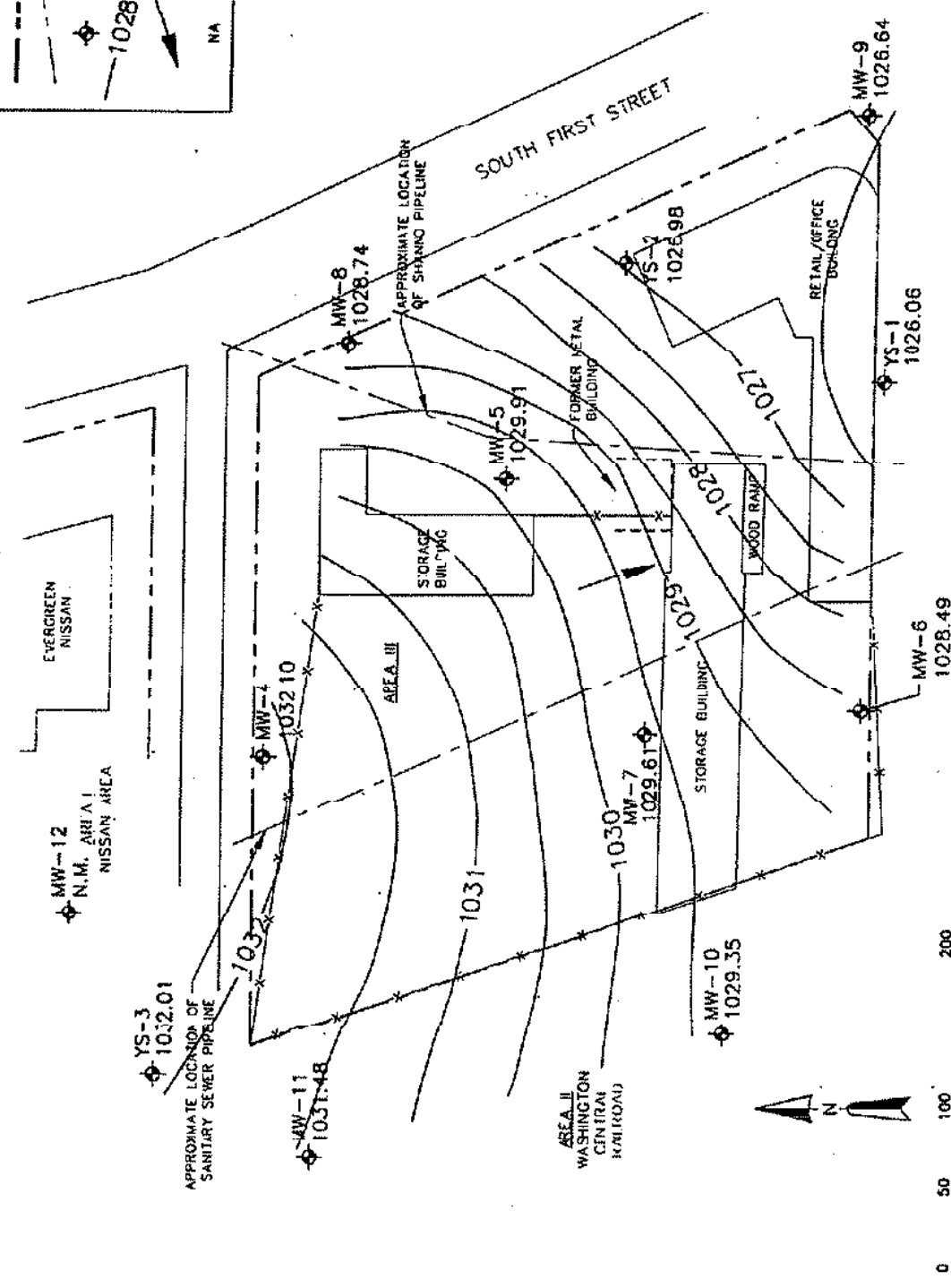
3-100-690

REF. DATE: DISC.



**LEGEND**

- PROPERTY BOUNDARY
- - - PIPELINE
- ◆ MONITORING WELL
- POTENTIOMETRIC SURFACE CONTOUR
- ↖ GENERAL DIRECTION OF GROUNDWATER FLOW
- NA NOT AVAILABLE



**CONFIDENTIAL**

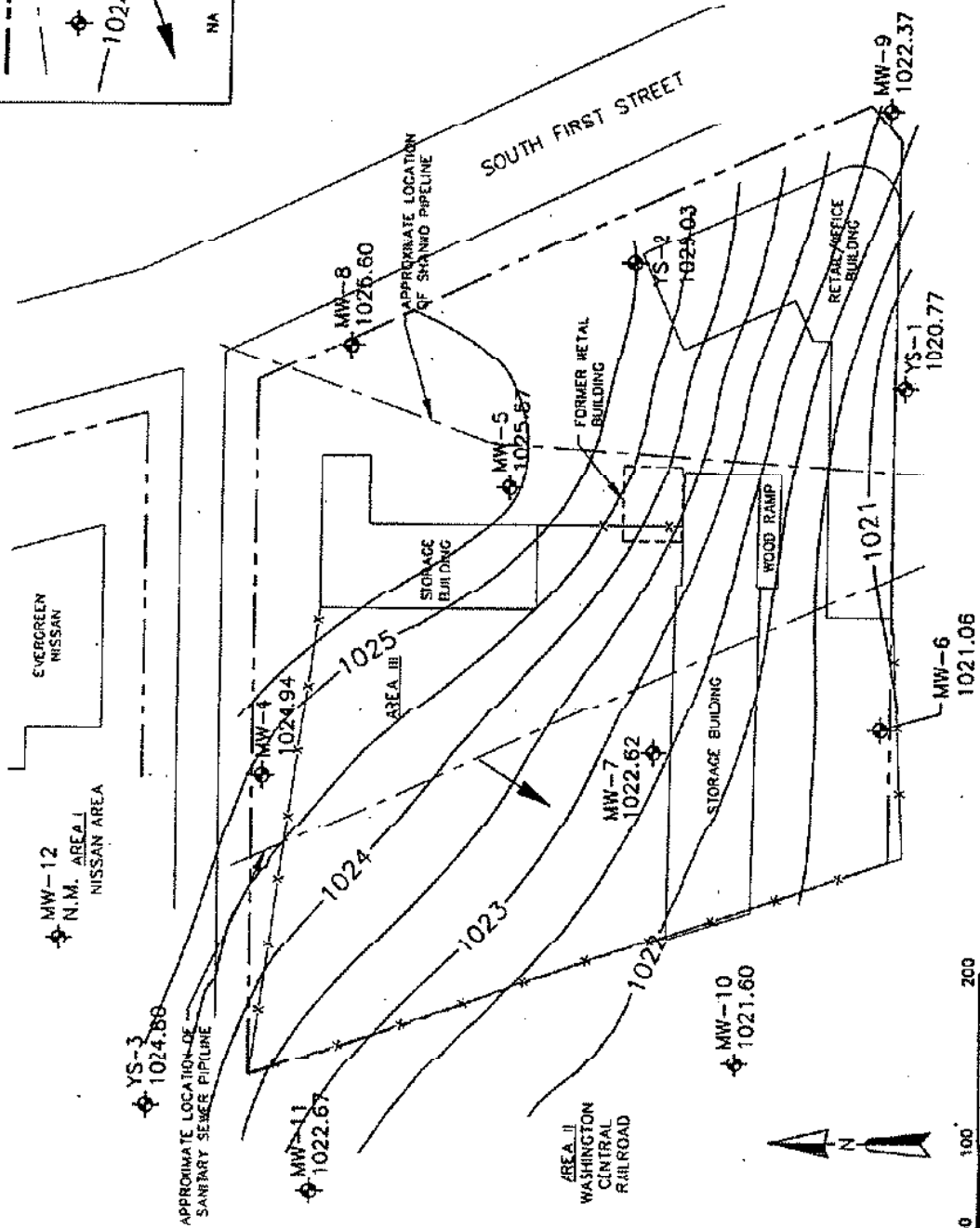
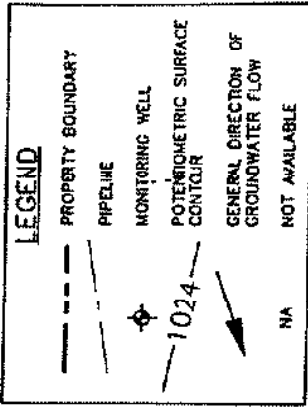
**POTENTIOMETRIC CONTOUR MAP**

SCALE 1" = 100'

SUPPLEMENTAL RI

3-1071-690

**REI/BC**



CONFIDENTIAL



POTENTIOMETRIC CONTOUR MAP  
2/17/94

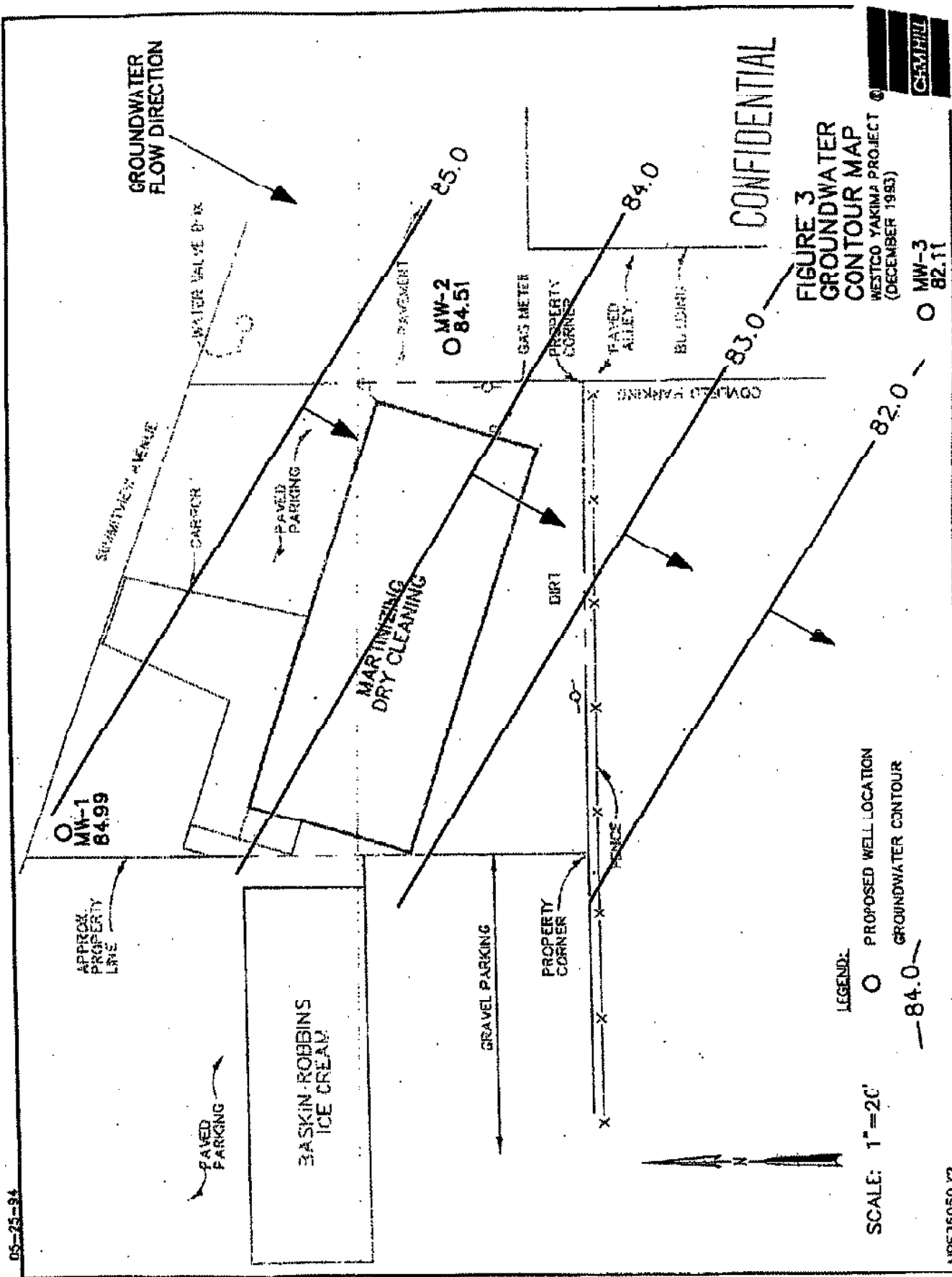
SCALE 1" = 100'

SUPPLEMENTAL RI

3-1071-690

REV. DATE DCS

05-25-94



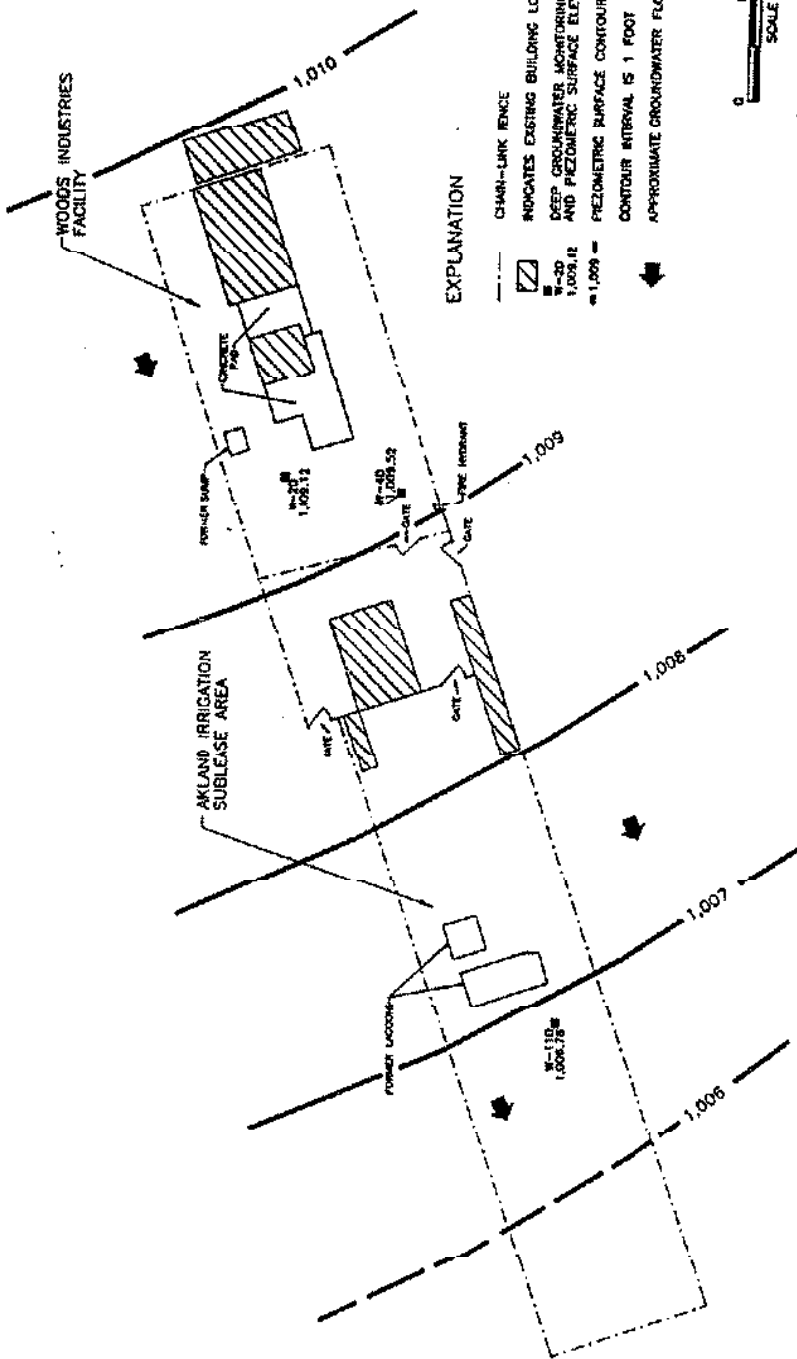
**FIGURE 3**  
**GROUNDWATER**  
**CONTOUR MAP**  
 WESTCO YAKIMA PROJECT  
 (DECEMBER 1993)



NPE35050.172

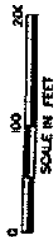
c:\s35050\172\FIG3.DWG

W-10  
1,00.39



EXPLANATION

- CHAIN-LINK FENCE
- ▨ INDICATES EXISTING BUILDING LOCATION
- W-30 DEEP GROUNDWATER MONITORING WELL NUMBER, 1,008.12 AND PIEZOMETRIC SURFACE ELEVATION
- W-10 DEEP GROUNDWATER MONITORING WELL NUMBER, 1,006.75 AND PIEZOMETRIC SURFACE ELEVATION
- PIEZOMETRIC SURFACE CONTOUR
- CONTOUR INTERVAL IS 1 FOOT
- ➔ APPROXIMATE GROUNDWATER FLOW DIRECTION



CONFIDENTIAL

John Mathis & Associates, Inc.  
 DEEP GROUNDWATER MONITORING  
 WELL PIEZOMETRIC SURFACE  
 SEPTEMBER 8 -- 11, 1990

NOTE ELEVATIONS ARE RELATIVE TO NATIONAL GEODETIC VERTICAL DATUM

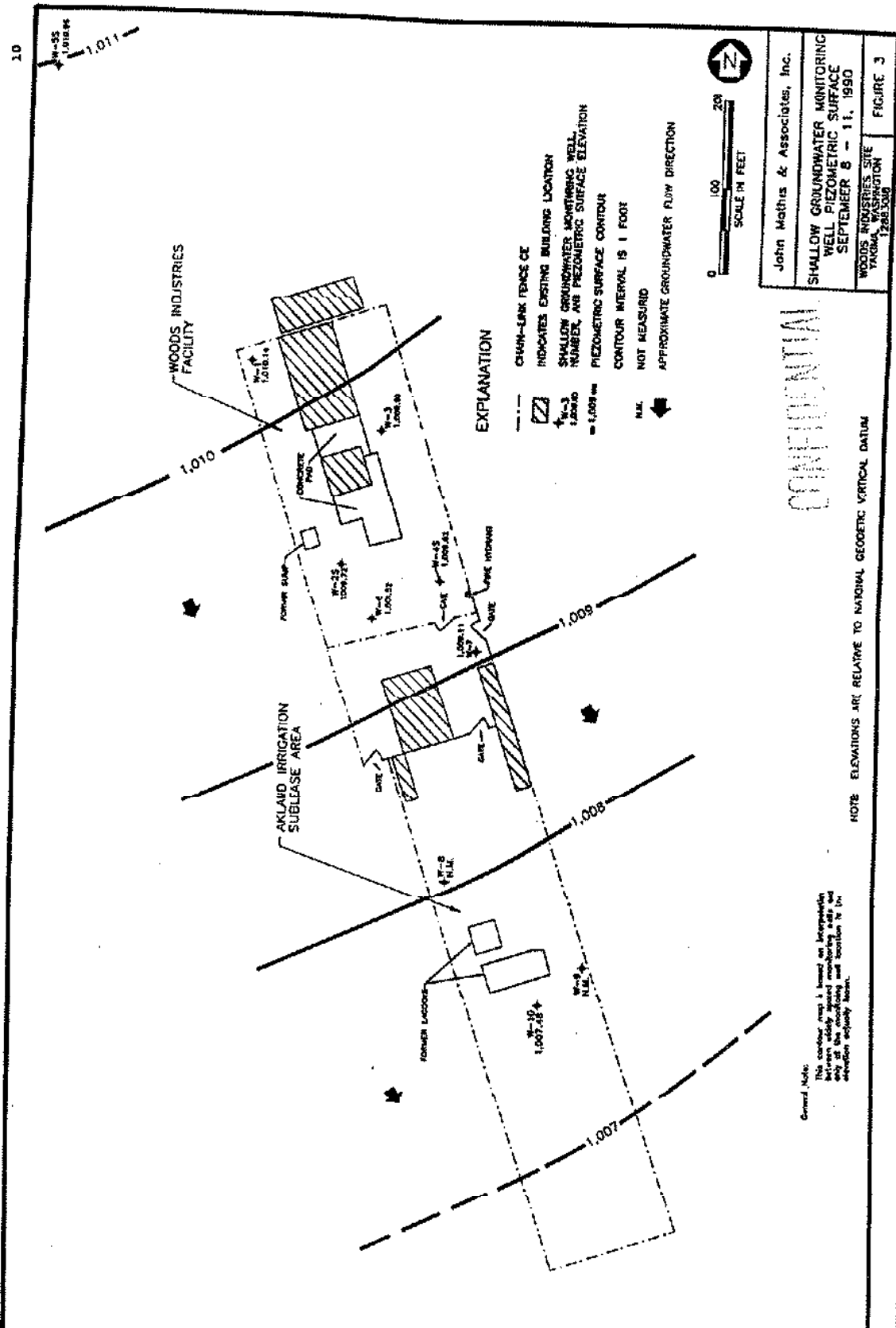
WOODS INDUSTRIES SITE  
 YAKIMA, WASHINGTON  
 12882508

FIGURE 4

General Note:  
 This contour map is based on interpolation  
 between widely spaced monitoring wells and  
 may not accurately reflect the  
 actual piezometric surface.

NO. DATE	BY	DATE	DESIGNED BY	DATE	PROJECT NUMBER
1	12/12/91	12/16/91	PTS	12/16/91	14792
			2/20/91		23441
			DEC/20		14792

REV. DATE 2/12/91  
 DRAWN BY 16-00-91  
 CHECKED BY PS  
 DOCUMENT NO. W-35  
 PROJECT NO. 1007-28



**EXPLANATION**

- - - CHAIN-LINK FENCE CE
- [Hatched Box] INDICATES EXISTING BUILDING LOCATION
- W-1, W-2, W-3, W-4, W-5, W-10, W-11, W-12, W-13, W-14, W-15 SHALLOW GROUNDWATER MONITORING WELL NUMBER AND PIEZOMETRIC SURFACE ELEVATION
- 1.008, 1.009, 1.010, 1.011 PIEZOMETRIC SURFACE CONTOUR
- CONTOUR INTERVAL IS 1 FOOT
- N.M. NOT MEASURED
- [Arrow] APPROXIMATE GROUNDWATER FLOW DIRECTION



John Mathis & Associates, Inc.  
 SHALLOW GROUNDWATER MONITORING  
 WELL PIEZOMETRIC SURFACE  
 SEPTEMBER 8 - 11, 1990  
 WOODS INDUSTRIES SITE  
 PROGRAM NO. W-35  
 1007-28  
 FIGURE 3

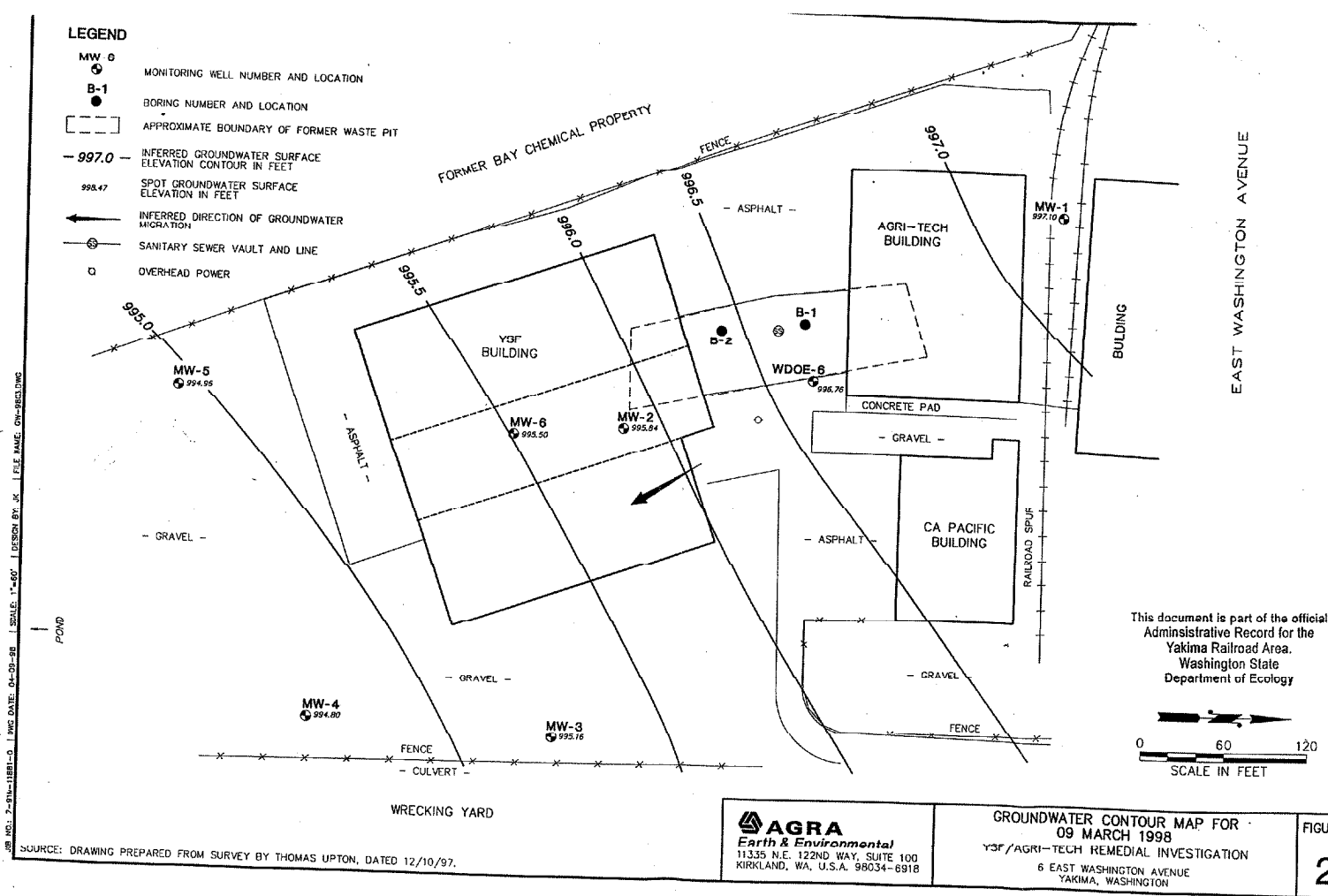
**CONFIDENTIAL**

NOTE: ELEVATIONS ARE RELATIVE TO NATIONAL GEODETIC VERTICAL DATUM

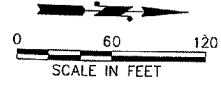
General Note:  
 This contour map is based on interpolation between closely spaced monitoring wells and elevation control points.

**LEGEND**

- MW 6  
● MONITORING WELL NUMBER AND LOCATION
- B-1  
● BORING NUMBER AND LOCATION
- APPROXIMATE BOUNDARY OF FORMER WASTE PIT
- 997.0-  
--- INFERRED GROUNDWATER SURFACE ELEVATION CONTOUR IN FEET
- 998.47  
● SPOT GROUNDWATER SURFACE ELEVATION IN FEET
- ← INFERRED DIRECTION OF GROUNDWATER MIGRATION
- ⊙ SANITARY SEWER VAULT AND LINE
- OVERHEAD POWER



This document is part of the official Administrative Record for the Yakima Railroad Area. Washington State Department of Ecology



SOURCE: DRAWING PREPARED FROM SURVEY BY THOMAS UPTON, DATED 12/10/97.

**AGRA**  
 Earth & Environmental  
 11335 N.E. 122ND WAY, SUITE 100  
 KIRKLAND, WA, U.S.A. 98034-6918

**GROUNDWATER CONTOUR MAP FOR**  
**09 MARCH 1998**  
 Y9F/AGRI-TECH REMEDIAL INVESTIGATION  
 6 EAST WASHINGTON AVENUE  
 YAKIMA, WASHINGTON

FIGURE  
**2**