



Remedial Soil Excavation

Ramblers Park Levee N-1: Phase II
6410 West Powerhouse Road
Yakima, Yakima County, Washington

September 23, 2015
Terracon Project No. 81157037

Prepared for:
Yakima County Public Services
Yakima, Washington

Prepared by:
Terracon Consultants, Inc.
Mountlake Terrace, Washington

terracon.com

Terracon

Environmental ■ Facilities ■ Geotechnical ■ Materials

September 23, 2015



Yakima County Public Services
128 North Second Street
Fourth Floor Courthouse
Yakima, Washington 98901

Attn: Ms. Mary Rosen

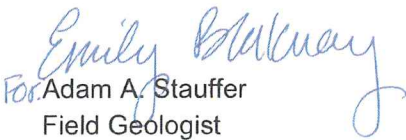
Re: Remedial Soil Excavation Report
Ramblers Park Levee N-1: Phase II
6410 West Powerhouse Road
Yakima, Yakima County, Washington
Terracon Project No. 81157037

Dear Ms. Rosen:

Terracon Consultants, Inc. (Terracon) is pleased to submit our report for Remedial Soil Excavation activities completed at the site referenced above. The report presents data from recent field activities that included the limited excavation of onsite soils, sampling, analysis and reporting. This assessment was performed in accordance with the Local Agency Standard Consultant Agreement, Formal Task Assignment #5, issued by Yakima County Public Services dated August 13, 2015.

Terracon appreciates this opportunity to provide environmental engineering services to Yakima County Public Services. Should you have any questions or require additional information, please do not hesitate to contact our office.

Sincerely,
Terracon Consultants, Inc.


For Adam A. Stauffer
Field Geologist


Eric A. Dubcak
Project Manager


Matt Wheaton, L.G.
Department Manager

Terracon Consultants, Inc. 21905 64th Ave. W Ste 100 Mountlake Terrace, WA 98043
P (425) 771 3304 F (425) 771 3549 terracon.com

TABLE OF CONTENTS



1.0 SITE DESCRIPTION 1
2.0 SCOPE OF SERVICES 2
 2.1 Standard of Care..... 2
 2.2 Additional Scope Limitations 2
 2.3 Reliance..... 3
3.0 ENVIRONMENTAL SITE WORK 3
 3.1 Remedial Excavation 3
 3.2 Soil Disposal 4
 3.3 Analytical Testing Methods 5
 3.4 Analytical Results..... 5
4.0 FINDINGS AND CONCLUSIONS 5
5.0 RECOMMENDATIONS 6

APPENDIX A – EXHIBITS

- Exhibit 1 – Topographic Map
- Exhibit 2 – Site Diagram – Remedial Excavation

APPENDIX B – TABLES

- Table 1 – Summary of Soil Sample Analytical Results

APPENDIX C – ANALYTICAL REPORTS AND CHAIN OF CUSTODIES

APPENDIX D – DISPOSAL DOCUMENTATION

APPENDIX E – LOCAL AGENCY STANDARD CONSULTANT AGREEMENT, FORMAL TASK ASSIGNMENT #5

**REMEDIAL SOIL EXCAVATION
RAMBLERS PARK LEVEE N-1: PHASE II
6410 WEST POWERHOUSE ROAD
YAKIMA, YAKIMA COUNTY, WASHINGTON**

**Terracon Project No. 81157037
September 23, 2015**

1.0 SITE DESCRIPTION

The site is located at 6410 West Powerhouse Road in Yakima, Yakima County, Washington and consists of the western portion of the 17.28-acre Yakima County tax parcel number 181308-11001, currently occupied by Weber's Auto Parts & Towing (Weber's). Weber's has reportedly occupied the parcel since the 1960's and consists of an approximately 8,200-square-foot office/shop building in the eastern portion of the parcel (off-site) with the remainder of the property (including the site) utilized as automobile and automotive parts storage. The site is bordered to the north by vacant Yakima County land, to the south by vacant land, to the east by the remainder of the Weber's parcel followed by West Powerhouse Road, and to the west by an existing levee and the Naches River beyond. A Topographic Map showing the site location is included as Exhibit 1 and a Site Diagram showing the remedial excavation area relative to pertinent site features is included as Exhibit 2, both in Appendix A.

Terracon previously performed a Limited Site Investigation (LSI) of the site in order to identify any potential impacts resulting from the approximately 40 years of Weber's operations. The LSI consisted of collecting soil samples at approximately one foot below ground surface (bgs), and again at approximately three feet bgs, from 11 shallow test pit explorations randomly placed across the site. One offsite test pit was excavated in an up-river location on the adjacent Yakima County land to the north of the site in an effort to assess "background" soil conditions. Soils from the 11 onsite test pits were analyzed for semi-volatile organic compounds (sVOCs), gasoline-, diesel-, and oil-range total petroleum hydrocarbons (TPH) and for Resource Conservation and Recovery Act (RCRA) metals: mercury, arsenic, barium, cadmium, chromium, lead, selenium and silver.

From ground surface to a depth of approximately 8 inches bgs, soils observed in test pit TP-11, located in the northwest corner of the site, exhibited a gray discoloration atypical of soils observed in the other LSI explorations. Based on the results of the soil sample collected at a depth of approximately six inches bgs in TP-11, lead and cadmium were identified at 1,800 milligrams per kilogram (mg/kg) and 15 mg/kg, respectively, and above their respective State of Washington Department of Ecology (Ecology) Model Toxics Control Act (MTCA) cleanup levels of 250 mg/kg (lead) and 2 mg/kg (cadmium). Subsequently, the deeper sample collected from TP-11 at three feet bgs was requested for lead and cadmium analysis to identify the vertical extent of impacts. Cadmium was below laboratory reporting limits in this deeper sample and lead was reported at a concentration of 12 mg/kg – well below the MTCA cleanup level – and

Remedial Soil Excavation

Ramblers Park Levee N-1: Phase II ■ Yakima, Washington
September 23, 2015 ■ Terracon Project No. 81157037



generally consistent with the background concentration collected from the offsite test pit TP-12. Analytical laboratory results for soil samples collected from the previous LSI test pits TP-11 and TP-12 are included on Table 1, in Appendix B.

Please refer to Terracon's *Limited Site Investigation; Ramblers Park Levee N-1: Phase II* report dated May 19, 2015, for a full summary of the LSI findings.

At the request of the client, Terracon completed a remedial excavation of surficial soils in and around the test pit TP-11 location. In general, our scope of services included directing Yakima County personnel performing the excavation and site restoration, confirmation soil sampling, and reporting.

2.0 SCOPE OF SERVICES

Terracon's scope of work was conducted in accordance with the Local Agency Standard Consultant Agreement, Formal Task Assignment #5, issued by Yakima County Public Services (Yakima County) dated August 13, 2015. The scope of services was not intended to identify every chemical possibly associated with the site or surrounding properties. Similarly, the proposed scope was not intended to determine the extent or magnitude of any existing contamination, if present. The proposed 10-foot by 10-foot excavation was extended to approximately 20 feet by 20 feet in total area at the time of field activities in order to adequately remove impacted soils, and included removal of all soils previously disturbed during the TP-11 excavation.

2.1 Standard of Care

Terracon's services were performed in a manner consistent with generally accepted practices of the profession undertaken in similar studies in the same geographical area during the same time. Terracon makes no warranties, either express or implied, regarding the findings, conclusions, or recommendations of this report. Please note that Terracon does not warrant the work of laboratories, regulatory agencies, or other third parties supplying information used in the preparation of this report. Remedial Soil Excavation services were performed in accordance with the scope of work agreed upon with you, our client, as reflected in our proposal and were not restricted by ASTM E1903-11.

2.2 Additional Scope Limitations

Findings, conclusions, and recommendations resulting from these services are based upon information derived from the onsite activities and other services performed under this scope of work; such information is subject to change over time. Certain indicators of the presence of hazardous substances, petroleum products, or other constituents may have been latent, inaccessible, unobservable, non-detectable, or not present during these services. We cannot

Remedial Soil Excavation

Ramblers Park Levee N-1: Phase II ■ Yakima, Washington
September 23, 2015 ■ Terracon Project No. 81157037



represent that the site contains no hazardous substances, toxic materials, petroleum products, or other latent conditions beyond those identified during this Remedial Soil Excavation. Subsurface conditions may vary from those encountered at specific test pits, borings or wells or during other surveys, tests, assessments, investigations, or exploratory services. The data, interpretations, findings, and our recommendations are based solely upon data obtained at the time and within the scope of these services.

2.3 Reliance

This report has been prepared for the exclusive use of Yakima County and any authorization for use or reliance by any other party (except a governmental entity having jurisdiction over the site) is prohibited without the express written authorization of Yakima County and Terracon. Any unauthorized distribution or reuse is at Yakima County's sole risk. Notwithstanding the foregoing, reliance by authorized parties will be subject to the terms, conditions, and limitations stated in the proposal, Remedial Soil Excavation report, and Terracon's Local Agency Standard Consultant Agreement. The limitation of liability defined in the terms and conditions is the aggregate limit of Terracon's liability to Yakima County and all relying parties unless otherwise agreed upon in writing.

3.0 ENVIRONMENTAL SITE WORK

Terracon has a 100% commitment to the safety of all its employees. As such, and in accordance with our *Incident and Injury Free*® safety goals, Terracon conducted the fieldwork under a site specific health and safety plan developed for this project. Work was performed using the Occupational Health and Safety Administration (OSHA) Level D work attire consisting of hard hats, safety glasses, protective gloves, and protective boots. In preparation for Terracon's prior LSI field activities, both public and private utility locates were performed in order to identify the locations and depths of any various utilities located within the excavation area to avoid damage to such utilities. Utilities were not identified within the limits of the excavation.

3.1 Remedial Excavation

Terracon field geologist Adam Stauffer was on site August 25, 2015, to complete the remedial excavation activities in the northwest portion of the site. Terracon provided oversight and direction to excavation personnel and equipment (i.e. back-hoe) provided by Yakima County (not under contract to Terracon) to complete the remedial excavation and subsequently performed confirmation soil sampling activities. The location of the excavation and sample locations relative to site features are included on Exhibit 2, in Appendix A.

The excavation dimensions were limited to approximately 20 feet by 20 feet and extended to depths of approximately three feet bgs in the excavation's center – the location of former test pit

Remedial Soil Excavation

Ramblers Park Levee N-1: Phase II ■ Yakima, Washington
September 23, 2015 ■ Terracon Project No. 81157037



TP-11 – and tapered to approximately one foot bgs at the excavations lateral extents. Work began by utilizing GPS coordinates, coupled with visual identification, to locate former test pit TP-11 followed by a brief discussion with Yakima County personnel regarding the proposed extents of the excavation, approximate volume of soils to be excavated, and confirmation sampling criteria.

Gray discoloration, as noted during Terracon's LSI activities on the site in April 2015, was again encountered at varying thicknesses within the top foot of soils in the proposed remedial excavation area. Given the correlation between soil discoloration and elevated lead and cadmium concentrations, as identified during the LSI, discolored soils in and around the TP-11 location were considered the target of remedial excavation activities. Given the non-volatile nature of metals, common supplemental methods of field screening (e.g. olfactory indicators, photoionization detector readings, or sheen tests) were rendered inapplicable for the purposes of this remedial excavation; therefore, Terracon extended the excavation to limits below the discolored soils. Throughout the remedial excavation area soils were removed to at least six inches below the terminal depth of gray soil discoloration.

Once soils underlying the discolored soil were exposed, three confirmation soil samples CS-1, CS-2 and CS-3 were collected at approximately one foot below the original grade surface. Additional samples (CS-1.1, CS-2.1 and CS-3.1) were collected again at approximately two feet bgs, in each of the three corresponding initial sample locations, and placed on hold in the event that further vertical delineation of impacts was necessary. Soils sample locations are depicted on Exhibit 2, in Appendix A. Soil samples were extracted by hand from the excavation, using clean disposable gloves for each sample collected, and placed directly into laboratory supplied glassware. Each sample container was labeled with the project number, date, time and sample number. Sample containers were placed in a chilled cooler immediately after sampling, and subsequently transported to the analytical laboratory under strict chain-of-custody procedures.

Following collection of the confirmation samples, the excavation was backfilled with surrounding soil and re-graded so that only a shallow depression in the site surface remained.

3.2 Soil Disposal

Terracon observed the removal of 17.59 tons of soil from the remedial excavation that was transported off site and delivered to the Terrace Heights Landfill in Yakima, Washington, for final disposition. As with excavation activities, waste soil transportation and disposal were self-performed by Yakima County, not under sub-contract to Terracon. A copy of the waste documentation provided by Yakima County is included in Appendix D.

Soils removed from the site were not sampled as part of this Remedial Soil Excavation. The aforementioned offsite disposal facility was chosen based on the lead and cadmium concentrations identified in Terracon's previous LSI. For the purpose of confirming proper soil

Remedial Soil Excavation

Ramblers Park Levee N-1: Phase II ■ Yakima, Washington
September 23, 2015 ■ Terracon Project No. 81157037



disposal options, toxicity characteristic leaching procedure (TCLP) analysis was previously performed on the TP-11 sample, collected as part of Terracon's LSI, with a reported lead concentration of 1,800 mg/kg. The TCLP result was a reported concentration of 2.2 milligrams per liter (mg/l) and below the threshold value of 5 mg/l for dangerous waste classification per Ecology's Dangerous Waste Regulations, Chapter 173-303 WAC.

The analytical result for TCLP analysis, previously performed as part of Terracon's LSI, is included on Table 1, in Appendix B, and the laboratory analytical report and chain-of-custody record for TCLP analysis are included in Appendix C.

3.3 Analytical Testing Methods

The confirmation soil samples collected were analyzed for select RCRA metals, specifically lead and cadmium, by EPA Method 6020. Deeper confirmation samples were collected and placed on hold pending the initial results.

The laboratory analytical report and chain-of-custody record are attached in Appendix C. The following sections describe the results of the testing.

3.4 Analytical Results

Confirmation sample results were compared to the MTCA Method A soil cleanup levels established under Chapter 70.105D RCW and its implementing regulation, MTCA Chapter 173-340 WAC. The MTCA Method A cleanup levels are shown along with the summary of analytical results on Table 1, in Appendix B.

Lead was detected in all three confirmation samples at concentrations ranging from 3.7 mg/kg to 8.4 mg/kg; however, these concentrations are all below the 250 mg/kg MTCA Method A standard for lead in soil. Cadmium was not detected above laboratory reporting limits in any of the three samples. Given these results, analysis of the deeper confirmation samples collected and submitted on hold to the analytical laboratory was not warranted.

Laboratory analytical results (including the aforementioned TCLP analytical result) are summarized on Table 1, in Appendix B, and laboratory analytical reports and chain of custodies are included in Appendix C.

4.0 FINDINGS AND CONCLUSIONS

Terracon observed and documented the remedial excavation of impacted soils identified in the vicinity of Terracon's previous LSI test pit, TP-11. Following the remedial excavation of 17.59 tons of soils, a total of three confirmation soil samples were submitted for laboratory analysis of select RCRA metals; lead and cadmium. Low concentrations of lead were detected above

Remedial Soil Excavation

Ramblers Park Levee N-1: Phase II ■ Yakima, Washington
September 23, 2015 ■ Terracon Project No. 81157037



laboratory reporting limits in all three samples; however, these concentrations were well below the MTCA Method A standard for lead in soil of 250 mg/kg.

Based on the results of the excavation observations and confirmation sample results, it appears that the documented lead and cadmium impacted shallow soils above cleanup levels in the vicinity of test pit TP-11 have been removed.

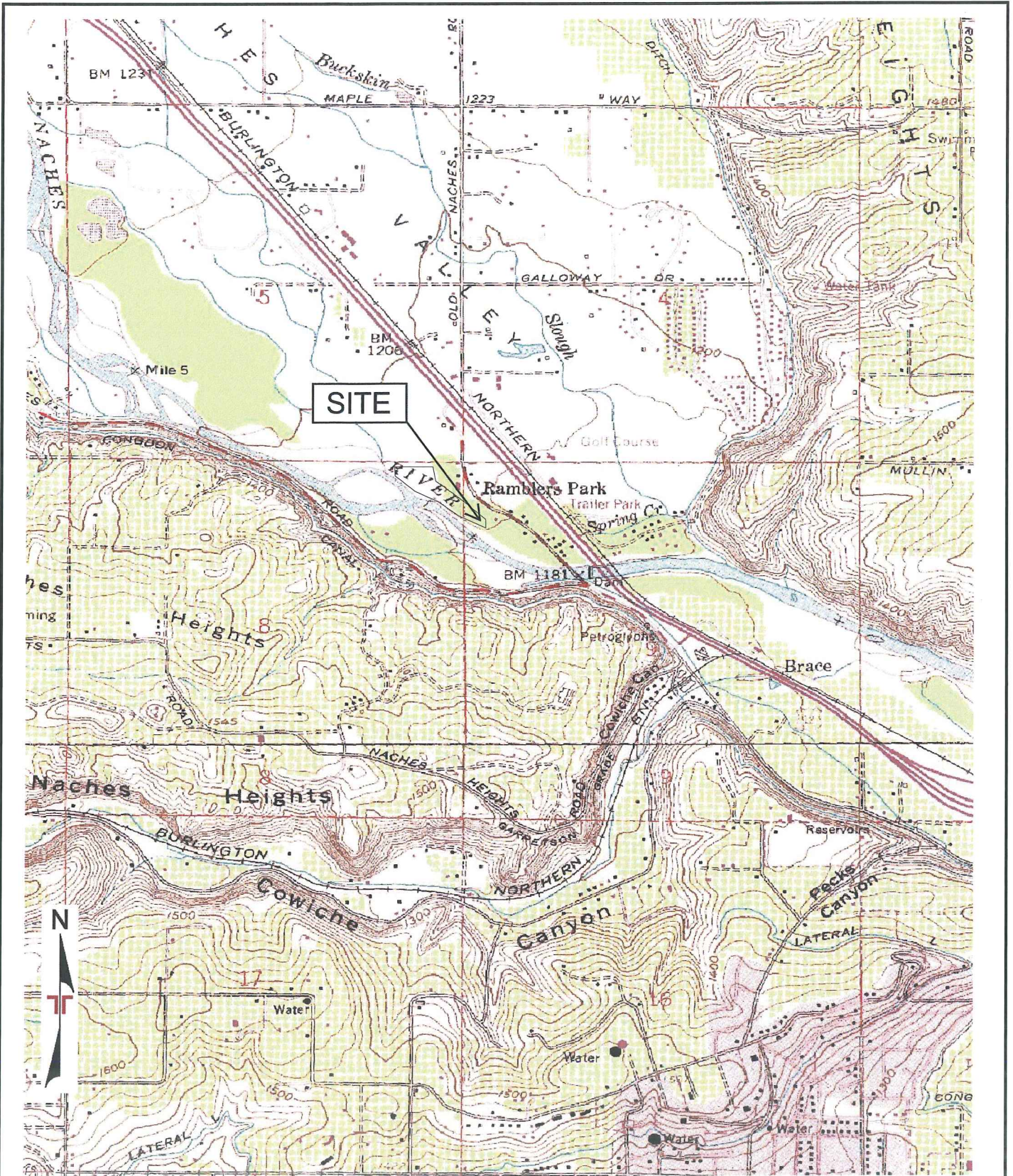
5.0 RECOMMENDATIONS

Based on the findings of this Remedial Soil Excavation further remediation in the vicinity of test pit TP-11 does not appear warranted at this time. In the event that other impacted areas of the site, not investigated previously, are identified during site redevelopment activities we recommend that you contact Terracon to quantify and qualify these potentially impacted areas.

APPENDIX A – EXHIBITS

Exhibit 1 – Topographic Map

Exhibit 2 – Site Diagram - Remedial Excavation



Topographic map image courtesy of the U.S. Geological Survey
 Quadrangles include: Selah, Wa (Jan. 1, 1985) and Yakima West, Wa (Jan. 1, 1985)

LEGEND:

— APPROXIMATE SITE BOUNDARY

Project Mngr:	EAD	Project No.	81157037
Drawn By:	AAS	Scale:	NOT TO SCALE
Checked By:	EAD	File No.	*.dwg
Approved By:	MYW	Date:	September 2015

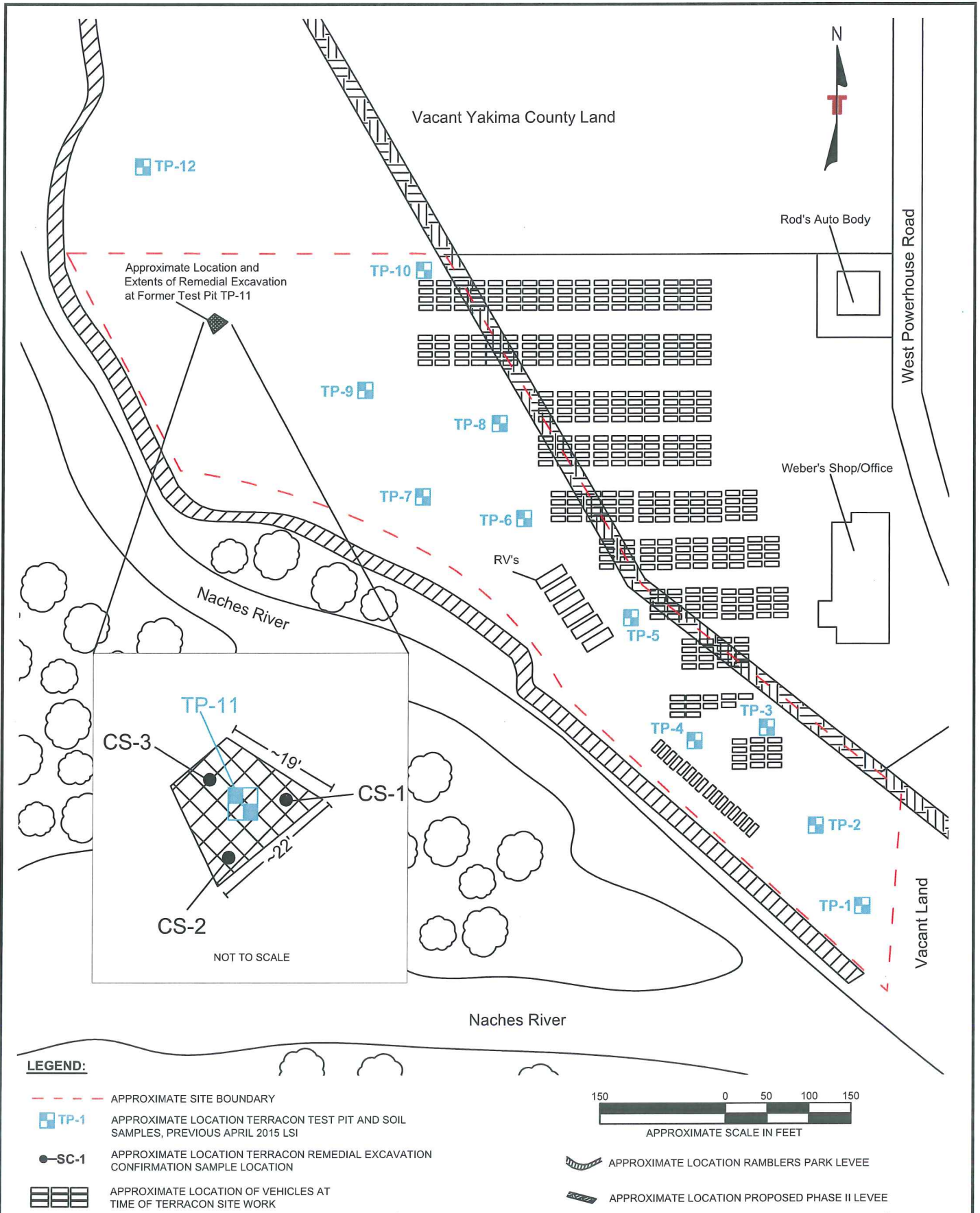
Terracon
 Consulting Engineers and Scientists

21905 64th Avenue W., Ste 100 Mountlake Terrace, WA 98043
 PH. (425) 771-3304 FAX. (425) 771-3549

TOPOGRAPHIC MAP

Ramblers Park Levee N-1: Phase II
 6410 West Powerhouse Road
 Yakima, Yakima County, Washington

Exhibit	1
---------	---



Project Mngr:	EAD
Drawn By:	AAS
Checked By:	EAD
Approved By:	MYW
Project No.	81157037
Scale:	AS SHOWN
File No.	*.dwg
Date:	September 2015

Terracon
Consulting Engineers and Scientists

21905 64th Avenue W., Ste 100 Mountlake Terrace, WA 98043
PH. (425) 771-3304 FAX. (425) 771-3549

SITE DIAGRAM - REMEDIAL EXCAVATION

Ramblers Park Levee N-1: Phase II
6410 West Powerhouse Road
Yakima, Yakima County, Washington

Exhibit	2
---------	---

APPENDIX B – TABLES

Table 1 - Summary of Soil Sample Analytical Results

TABLE 1

SUMMARY OF SOIL SAMPLE ANALYTICAL RESULTS

Ramblers Park Levee N-1: Phase II
 6410 West Powerhouse Road
 Yakima, Yakima County, Washington
 Terracon Project No. 81157037
 September 23, 2015

CONFIRMATION AND TEST PIT SOIL SAMPLES					
all concentrations are in milligrams per kilogram (mg/kg)					
Sample Number	Sample Depth (feet)	Sample Date	Removed/In place	RCRA ¹ Metals	
				Lead	Cadmium
TP-11	0.5	4/9/2015	Removed	1,800	15
TP-11	3	4/9/2015	In place	12	ND (<0.52)
TP-12	1.5	4/9/2015	In place	5.1	ND (<0.53)
CS-1	1	8/25/2015	In place	4.4	ND (<0.50)
CS-2	1	8/25/2015	In place	3.7	ND (<0.50)
CS-3	1	8/25/2015	In place	8.4	ND (<0.50)
CS-1.1	2	8/25/2015	In place	NA	NA
CS-2.1	2	8/25/2015	In place	NA	NA
CS-3.1	2	8/25/2015	In place	NA	NA
MTCA² Method A Cleanup Level				250	2
TCLP ANALYSIS					
all concentrations are in milligrams per liter (mg/l)					
Sample Number	Sample Depth (feet)	Sample Date	Removed/In place	RCRA ¹ Metals	
				Lead	
TP-11	0.5	4/9/2015	Removed	2.2	
Ecology³ Dangerous Waste Regulation Threshold Value				5	

Note: Values detected are in **BOLD** type.

Note: Values detected above MTCA Method A standard are in shaded **BOLD** type.

RCRA¹ Resource Conservation Recovery Act

MTCA² Model Toxics Control Act

Ecology³ Washington State Department of Ecology

**APPENDIX C – ANALYTICAL REPORTS AND CHAIN OF
CUSTODIES**



September 1, 2015

Mr. Eric Dubcak
Terracon
21905 - 64th Ave W, Suite 100
Mountlake Terrace, WA 98043

Dear Mr. Dubcak,

On August 26th, 6 samples were received by our laboratory and assigned our laboratory project number EV15080149. The project was identified as your 81157037. The sample identification and requested analyses are outlined on the attached chain of custody record.

No abnormalities or nonconformances were observed during the analyses of the project samples.

Please do not hesitate to call me if you have any questions or if I can be of further assistance.

Sincerely,

ALS Laboratory Group

Rick Bagan
Laboratory Director



CERTIFICATE OF ANALYSIS

CLIENT: Terracon
21905 - 64th Ave W, Suite 100
Mountlake Terrace, WA 98043
DATE: 9/1/2015
ALS JOB#: EV15080149
ALS SAMPLE#: EV15080149-01
CLIENT CONTACT: Eric Dubcak
DATE RECEIVED: 08/26/2015
CLIENT PROJECT: 81157037
COLLECTION DATE: 8/25/2015 1:15:00 PM
CLIENT SAMPLE ID CS-1
WDOE ACCREDITATION: C601

SAMPLE DATA RESULTS

ANALYTE	METHOD	RESULTS	REPORTING LIMITS	DILUTION FACTOR	UNITS	ANALYSIS DATE	ANALYSIS BY
Cadmium	EPA-6020	U	0.50	5	MG/KG	08/28/2015	RAL
Lead	EPA-6020	4.4	0.50	5	MG/KG	08/28/2015	RAL

U - Analyte analyzed for but not detected at level above reporting limit.



CERTIFICATE OF ANALYSIS

CLIENT: Terracon
21905 - 64th Ave W, Suite 100
Mountlake Terrace, WA 98043
DATE: 9/1/2015
ALS JOB#: EV15080149
ALS SAMPLE#: EV15080149-02
CLIENT CONTACT: Eric Dubcak
DATE RECEIVED: 08/26/2015
CLIENT PROJECT: 81157037
COLLECTION DATE: 8/25/2015 1:25:00 PM
CLIENT SAMPLE ID CS-2
WDOE ACCREDITATION: C601

SAMPLE DATA RESULTS

ANALYTE	METHOD	RESULTS	REPORTING LIMITS	DILUTION FACTOR	UNITS	ANALYSIS DATE	ANALYSIS BY
Cadmium	EPA-6020	U	0.50	5	MG/KG	08/28/2015	RAL
Lead	EPA-6020	3.7	0.50	5	MG/KG	08/28/2015	RAL

U - Analyte analyzed for but not detected at level above reporting limit.



CERTIFICATE OF ANALYSIS

CLIENT: Terracon
21905 - 64th Ave W, Suite 100
Mountlake Terrace, WA 98043
DATE: 9/1/2015
ALS JOB#: EV15080149
ALS SAMPLE#: EV15080149-03
CLIENT CONTACT: Eric Dubcak
DATE RECEIVED: 08/26/2015
CLIENT PROJECT: 81157037
COLLECTION DATE: 8/25/2015 1:30:00 PM
CLIENT SAMPLE ID CS-3
WDOE ACCREDITATION: C601

SAMPLE DATA RESULTS

ANALYTE	METHOD	RESULTS	REPORTING LIMITS	DILUTION FACTOR	UNITS	ANALYSIS DATE	ANALYSIS BY
Cadmium	EPA-6020	U	0.50	5	MG/KG	08/28/2015	RAL
Lead	EPA-6020	8.4	0.50	5	MG/KG	08/28/2015	RAL

U - Analyte analyzed for but not detected at level above reporting limit.



CERTIFICATE OF ANALYSIS

CLIENT: Terracon
21905 - 64th Ave W, Suite 100
Mountlake Terrace, WA 98043
DATE: 9/1/2015
ALS SDG#: EV15080149
WDOE ACCREDITATION: C601
CLIENT CONTACT: Eric Dubcak
CLIENT PROJECT: 81157037

LABORATORY BLANK RESULTS

MB-082615S - Batch 96630 - Soil by EPA-6020

ANALYTE	METHOD	RESULTS	QUAL	UNITS	REPORTING LIMITS	ANALYSIS DATE	ANALYSIS BY
Cadmium	EPA-6020	U		MG/KG	0.10	08/27/2015	RAL
Lead	EPA-6020	U		MG/KG	0.10	08/27/2015	RAL

U - Analyte analyzed for but not detected at level above reporting limit.



CERTIFICATE OF ANALYSIS

CLIENT: Terracon
21905 - 64th Ave W, Suite 100
Mountlake Terrace, WA 98043
DATE: 9/1/2015
ALS SDG#: EV15080149
WDOE ACCREDITATION: C601
CLIENT CONTACT: Eric Dubcak
CLIENT PROJECT: 81157037

LABORATORY CONTROL SAMPLE RESULTS

ALS Test Batch ID: 96630 - Soil by EPA-6020

SPIKED COMPOUND	METHOD	%REC	RPD	QUAL	ANALYSIS DATE	ANALYSIS BY
Cadmium - BS	EPA-6020	106			08/27/2015	RAL
Cadmium - BSD	EPA-6020	105	1		08/27/2015	RAL
Lead - BS	EPA-6020	107			08/27/2015	RAL
Lead - BSD	EPA-6020	105	1		08/27/2015	RAL

APPROVED BY

Laboratory Director



ALS Environmental
8620 Holly Drive, Suite 100
Everett, WA 98208
Phone (425) 356-2600
Fax (425) 356-2626
http://www.alsglobal.com

Chain Of Custody/ Laboratory Analysis Request

ALS Job# (Laboratory Use Only)

EVISO80149

Date **8-25-15** Page **1** Of **1**

PROJECT ID: 81157037 81157037		ANALYSIS REQUESTED			
REPORT TO COMPANY: TERRAKON	OTHER (Specify)				
PROJECT MANAGER: ERIC DUBCAK	<input type="checkbox"/> TCLP-Metals <input type="checkbox"/> VOA <input type="checkbox"/> Semi-Vol <input type="checkbox"/> Pest <input type="checkbox"/> Herbs <input type="checkbox"/> Metals Other (Specify)				
ADDRESS: 21905 - 64TH AVE W, STE 100	<input type="checkbox"/> Metals-MTCA-5 <input type="checkbox"/> RCRA-8 <input type="checkbox"/> PI Pol <input type="checkbox"/> TAL <input type="checkbox"/>				
PHONE: 425-771-3304	<input type="checkbox"/> PCB <input type="checkbox"/> Pesticides <input type="checkbox"/> by EPA 8081/8082 <input type="checkbox"/> Polycyclic Aromatic Hydrocarbons (PAH) by EPA-8270 SIM <input type="checkbox"/>				
P.O. #: _____	<input type="checkbox"/> Semivolatile Organic Compounds by EPA 8270 <input type="checkbox"/> EDB / EDC by EPA 8260 (soil)				
INVOICE TO COMPANY: _____	<input type="checkbox"/> EDB / EDC by EPA 8260 SIM (water) <input type="checkbox"/> Volatile Organic Compounds by EPA 8260				
ATTENTION: SAME	<input type="checkbox"/> Halogenated Volatiles by EPA 8260 <input type="checkbox"/> MTBE by EPA-8021 <input type="checkbox"/> EPA-8260				
ADDRESS: _____	<input type="checkbox"/> BTEX by EPA-8021 <input type="checkbox"/> NMTPH-GX <input type="checkbox"/> NMTPH-DX <input type="checkbox"/> NMTPH-HCID				
SAMPLE I.D.	DATE	TIME	TYPE	LAB#	RECEIVED IN GOOD CONDITION?
1. CS-1	8-25-15	13:15	Soil	1	1
2. CS-2	13:25	13:25		2	1
3. CS-3	13:30	13:30		3	1
4. CS-1.1	13:35	13:35		4	1
5. CS-2.1	13:41	13:41		5	1
6. CS-3.1	13:48	13:48	↓	6	1
7.					
8.					
9.					
10.					

SPECIAL INSTRUCTIONS

SIGNATURES (Name, Company, Date, Time):
 1. Relinquished By: Adam S. Stapp, TERRAKON, 08:50
 Received By: Just Boyer, ALS 8/26/15 8:50
 2. Relinquished By: _____
 Received By: _____

TURNAROUND REQUESTED in Business Days*
 Organic, Metals & Inorganic Analysis
 1 SAME DAY
 3 STANDARD
 5 STANDARD
 10 STANDARD
 Fuels & Hydrocarbon Analysis
 1 SAME DAY
 3 STANDARD
 5 STANDARD

*Turnaround request less than standard may incur Rush Charges

APPENDIX D – DISPOSAL DOCUMENTATION

TERRACE HEIGHTS LANDFILL
7151 ROZA HILL DRIVE
YAKIMA, WA 98901
PHONE #:509-574-2450

Webers

R E C E I P T

TICKET #: 2217897

---IN--- ---OUT--
DATE:08/25/15 08/25/15
TIME:14:09 14:28
ID:LAB VLR

CUSTOMER:0602
YAKIMA COUNTY ROAD DE
YAKIMA COUNTY COURTHOUSE
YAKIMA WA

TRUCK:YCRD
GROSS: 62960 LBS TARE: 27780 LBS

MATERIAL:10 - Garbage
NET LBS: 35180 LBS TIP FEE: 543.36
NET TONS: 17.59 SPEC FEE: 0.00
TAX FEE: 19.56
TOTAL FEE: \$562.92

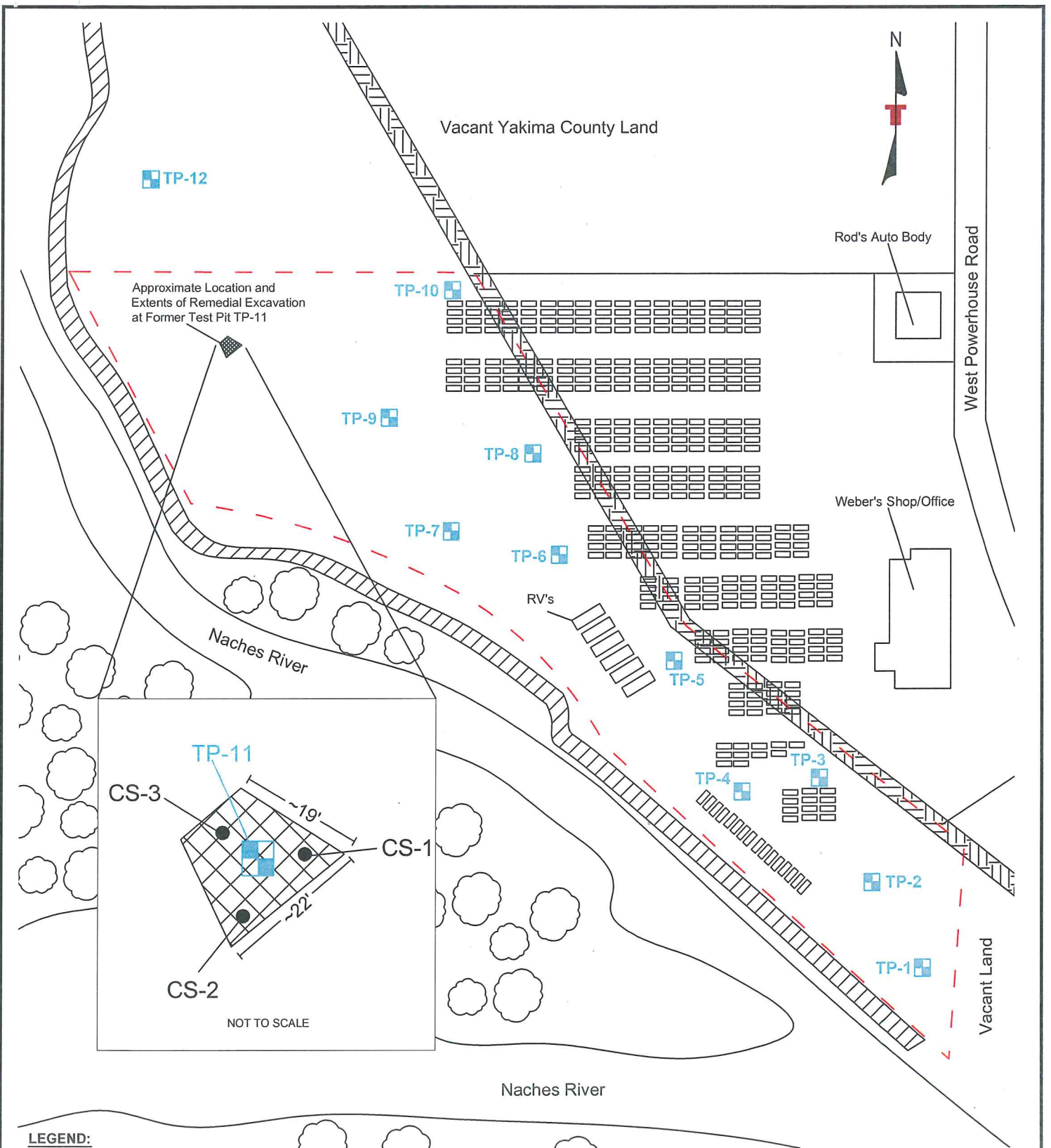
Payment: 1 - Charge
Amount: \$562.92 Change: 0.00
Check#: Auth #: CCMUM

NOTE:Weber's Auto
SPECIALS FEES QTY

x *Mary Reed*

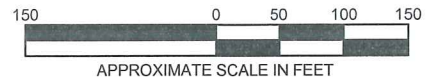
FC3542-700-5

**APPENDIX E – LOCAL AGENCY STANDARD CONSULTANT
AGREEMENT; FORMAL TASK ASSIGNMENT #5**



LEGEND:

- - - APPROXIMATE SITE BOUNDARY
- TP-1 APPROXIMATE LOCATION TERRACON TEST PIT AND SOIL SAMPLES, PREVIOUS APRIL 2015 LSI
- SC-1 APPROXIMATE LOCATION TERRACON REMEDIAL EXCAVATION CONFIRMATION SAMPLE LOCATION
- APPROXIMATE LOCATION OF VEHICLES AT TIME OF TERRACON SITE WORK



APPROXIMATE LOCATION RAMBLERS PARK LEVEE

APPROXIMATE LOCATION PROPOSED PHASE II LEVEE

Project Mngr:	EAD	Project No.	81157037
Drawn By:	AAS	Scale:	AS SHOWN
Checked By:	EAD	File No.	*.dwg
Approved By:	MYW	Date:	September 2015

Terracon
Consulting Engineers and Scientists

21905 64th Avenue W., Ste 100 Mountlake Terrace, WA 98043
PH. (425) 771-3304 FAX. (425) 771-3549

SITE DIAGRAM - REMEDIAL EXCAVATION

Ramblers Park Levee N-1: Phase II
6410 West Powerhouse Road
Yakima, Yakima County, Washington

Exhibit
2