

Figure 1A

Vicinity Map



1 in. = 1,600 ft. at 8.5x11 in. figure

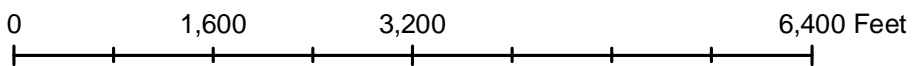


Figure 1B

Site Map

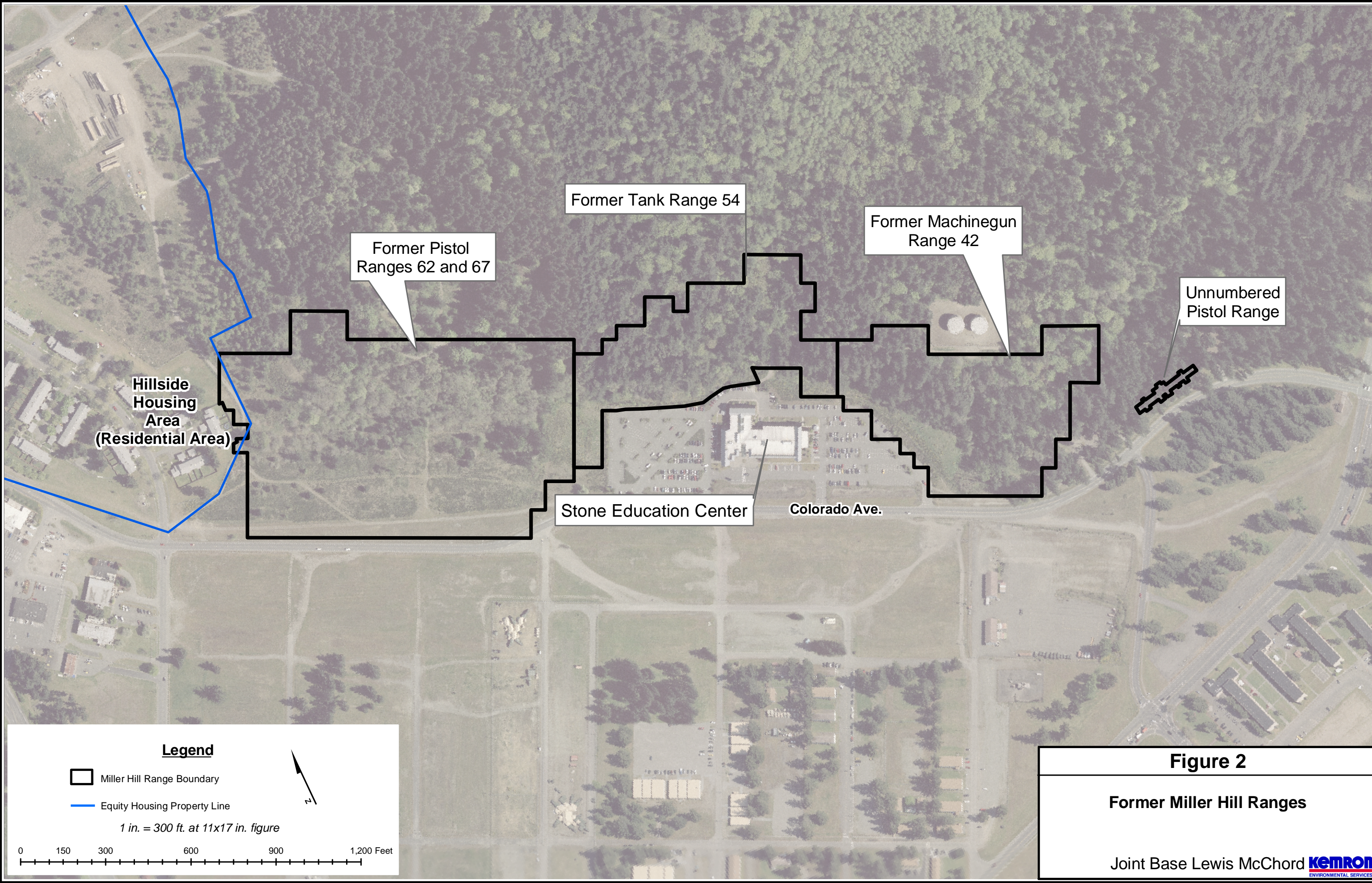
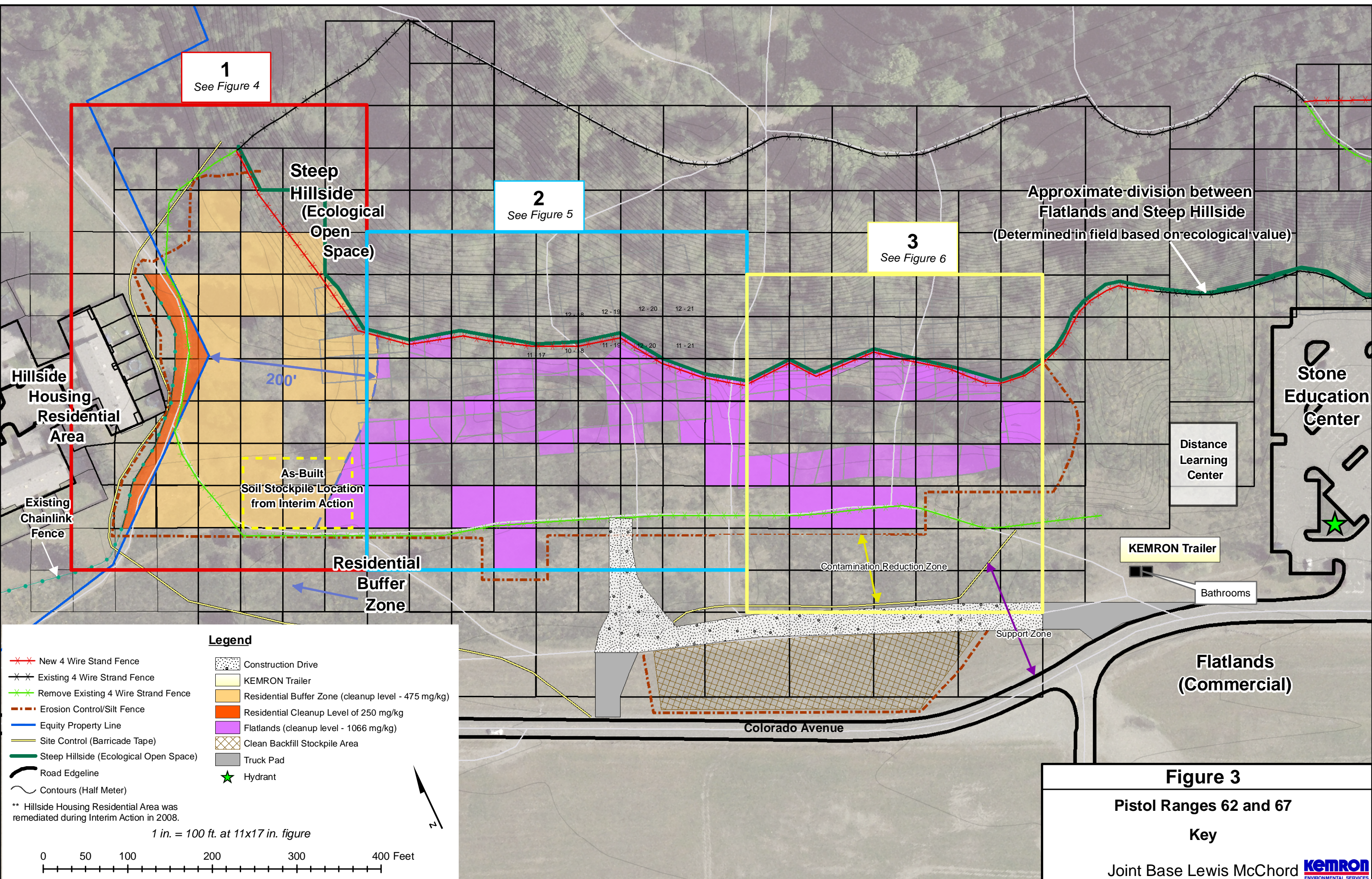


Figure 2
Former Miller Hill Ranges
 Joint Base Lewis McChord **KEMTRON**
 ENVIRONMENTAL SERVICES



1
See Figure 4

2
See Figure 5

3
See Figure 6

Approximate division between
Flatlands and Steep Hillside
(Determined in field based on ecological value)

Hillside
Housing
Residential
Area

Steep
Hillside
(Ecological
Open
Space)

As-Built
Soil Stockpile Location
from Interim Action

Residential
Buffer
Zone

Stone
Education
Center

Distance
Learning
Center

KEMRON Trailer

Bathrooms

Contamination Reduction Zone

Support Zone

Flatlands
(Commercial)

Colorado Avenue

- New 4 Wire Stand Fence
- Existing 4 Wire Strand Fence
- Remove Existing 4 Wire Strand Fence
- Erosion Control/Silt Fence
- Equity Property Line
- Site Control (Barricade Tape)
- Steep Hillside (Ecological Open Space)
- Road Edgeline
- Contours (Half Meter)

Legend

- Construction Drive
- KEMRON Trailer
- Residential Buffer Zone (cleanup level - 475 mg/kg)
- Residential Cleanup Level of 250 mg/kg
- Flatlands (cleanup level - 1066 mg/kg)
- Clean Backfill Stockpile Area
- Truck Pad
- Hydrant

** Hillside Housing Residential Area was remediated during Interim Action in 2008.

1 in. = 100 ft. at 11x17 in. figure

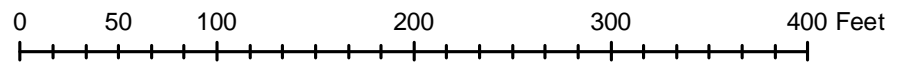


Figure 3
Pistol Ranges 62 and 67
Key
Joint Base Lewis McChord **KEMRON**
ENVIRONMENTAL SERVICES

Legend

- Existing Chainlink Fence
- New 4 Wire Strand Fence
- Existing 4 Wire Strand Fence
- Remove Existing 4 Wire Strand Fence
- Erosion Control/Silt Fence
- Equity Housing Property Line
- Site Control (Barricade Tape)
- Steep Hillside (Ecological Open Space)
- Contours (Half Meter)
- Residential Cleanup Level of 250 mg/kg
- Residential Buffer Zone (cleanup level - 475 mg/kg)
- Flatlands (cleanup level - 1066 mg/kg)
- Truck Pad
- Clean Backfill Stockpile Area
- Sub-grids to be excavated (≤ 2500 sq.ft.)
- Hydrant
- Road Edgeline

** Hillside Housing Residential Area was remediated during Interim Action in 2008.

1 in. = 60 ft. at 11x17 in. figure

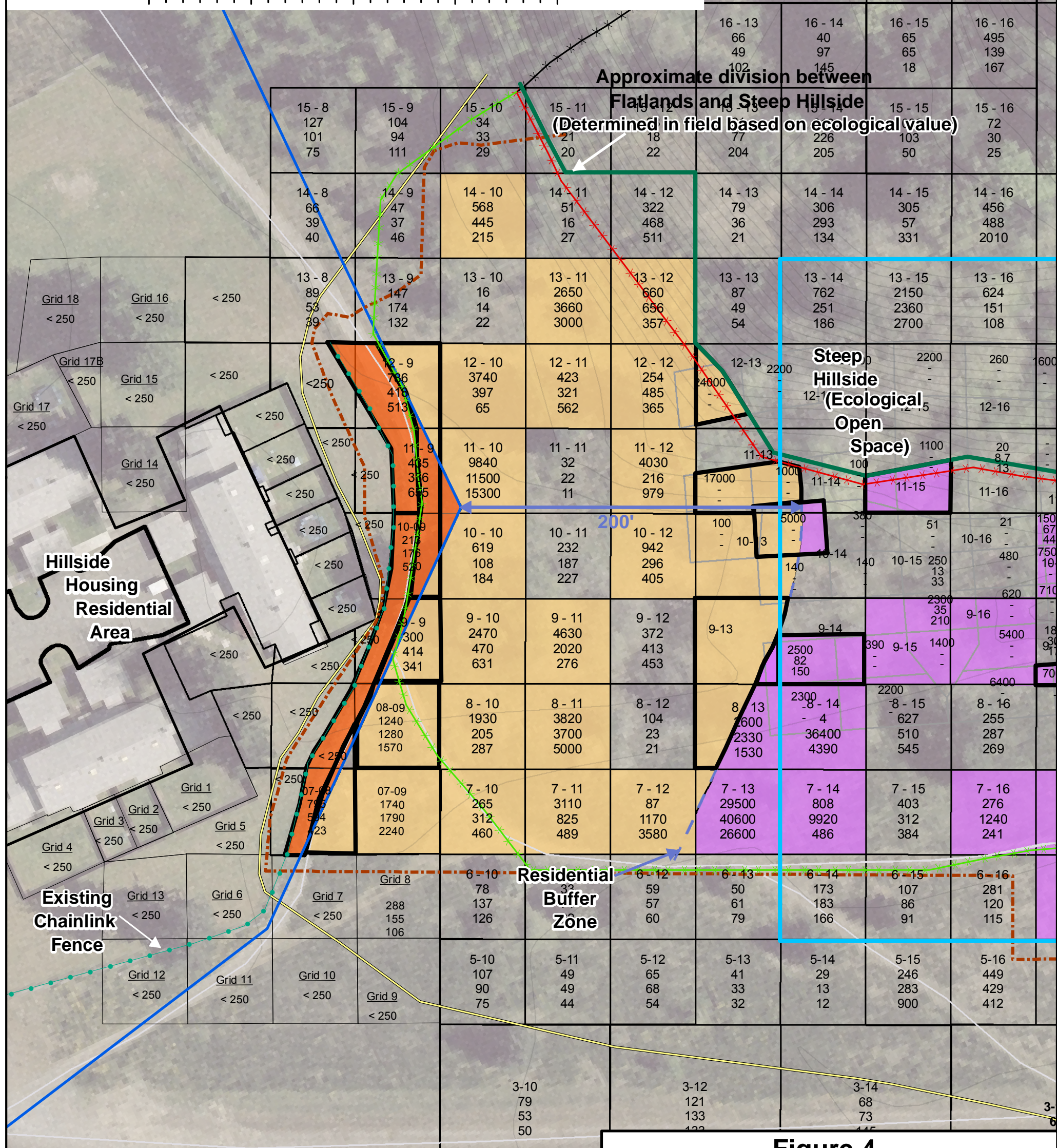
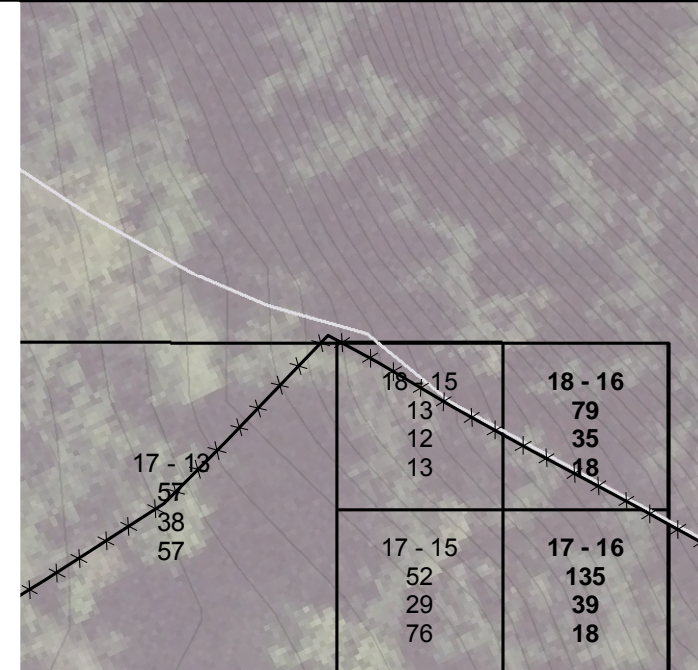
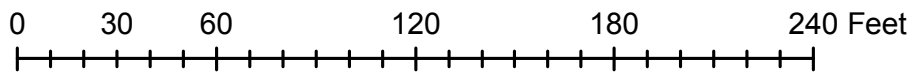


Figure 4

Range 62/67 West Excavation Area and Site Control

Legend

- ✖ New 4 Wire Strand Fend
- ✖ Existing 4 Wire Strand Fence
- ✖ Remove Existing 4 Wire Strand Fence
- Erosion Control/Silt Fence
- Road Edgeline
- Site Control (Barricade Tape)
- Steep Hillside (Ecological Open Space)
- Contours (Half Meter)
- Construction Drive
- Residential Buffer Zone (cleanup level - 475 mg/kg)
- Flatlands (cleanup level - 1066 mg/kg)
- Truck Pad
- Clean Backfill Stockpile Area
- Sub-grids to be excavated (≤ 2500 sq.ft.)

* Sub-grids to be delineated.

1 in. = 60 ft. at 11x17 in. figure

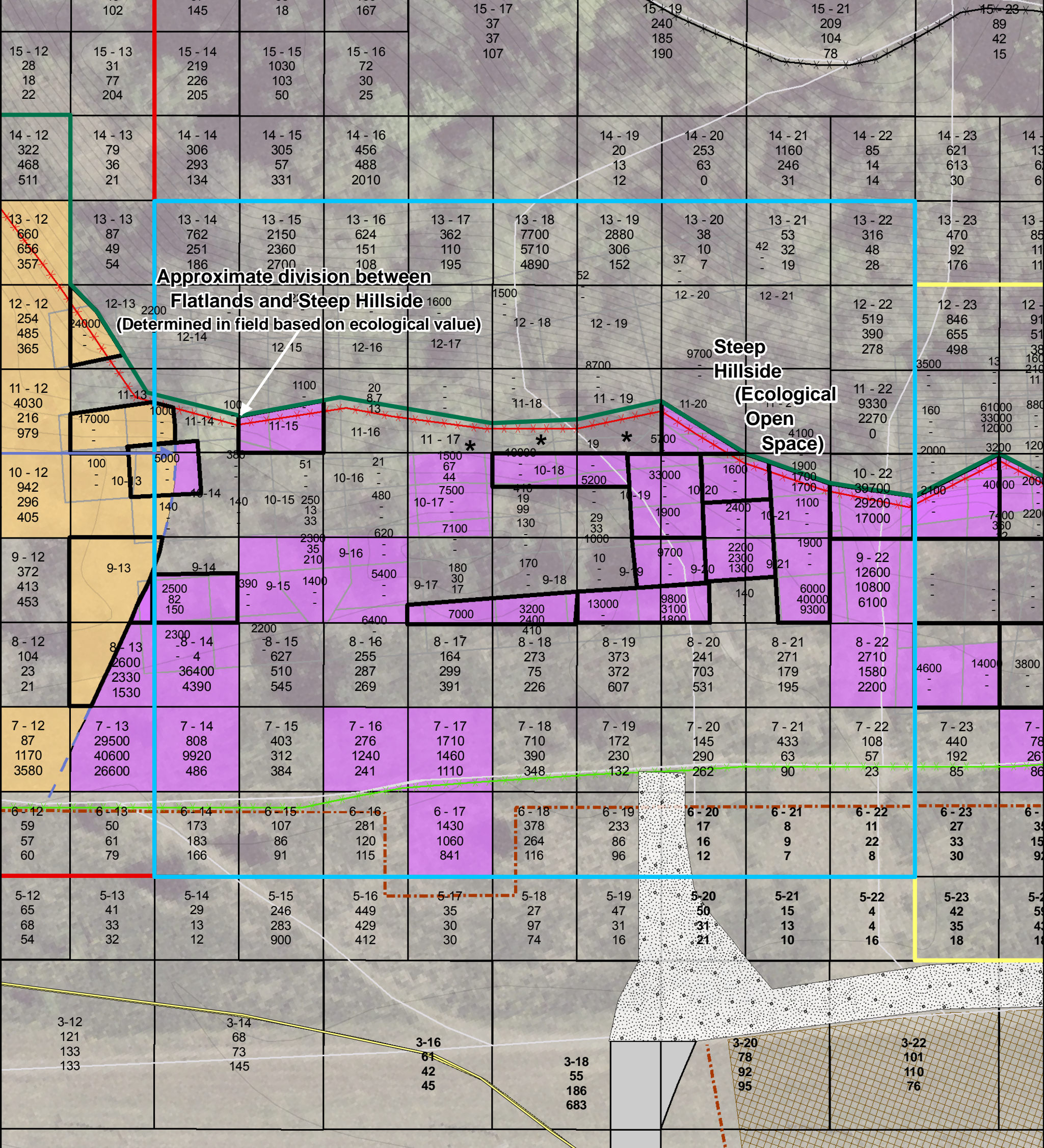
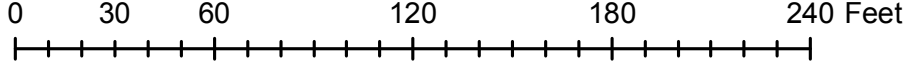


Figure 5

Range 62/67 Central Excavation Area and Site Control

Legend

- ✖ New 4 Wire Strand Fence
 - ✖ Existing 4 Wire Strand Fence
 - ✖ Remove Existing 4 Wire Strand Fence
 - Erosion Control/Silt Fence
 - Site Control (Barricade Tape)
 - Steep Hillside (Ecological Open Space)
 - Road Edgeline
 - Contours (Half Meter)
 - Construction Drive
 - Residential Buffer Zone (cleanup level - 475 mg/kg)
 - Flatlands (cleanup level - 1066 mg/kg)
 - Truck Pad
 - Clean Backfill Stockpile Area
 - Sub-grids to be excavated (≤ 2500 sq.ft.)
 - Hydrant
- * Grids To Be Delineated 1 in. = 60 ft. at 11x17 in. figure

0 30 60 120 180 240 Feet

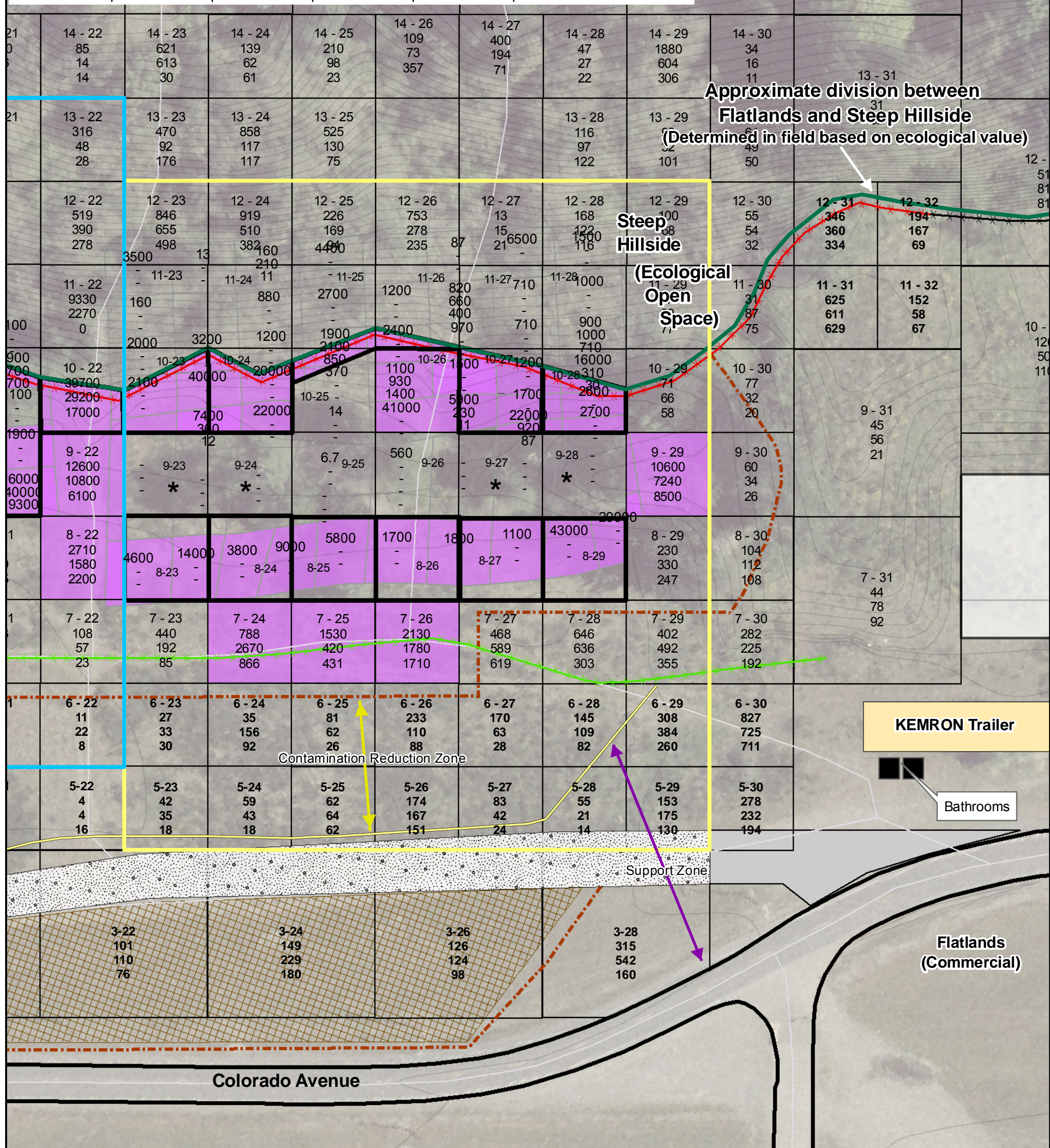
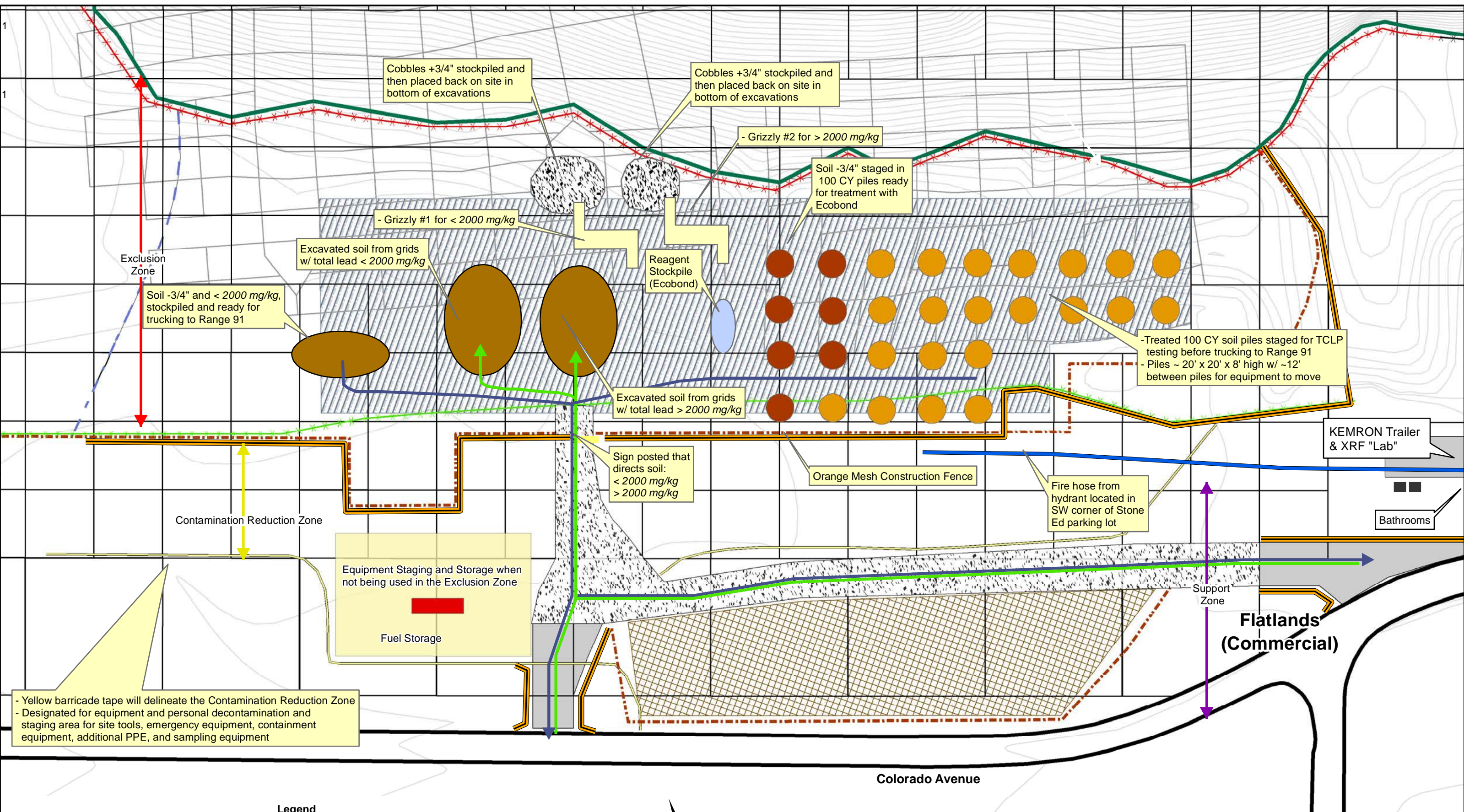
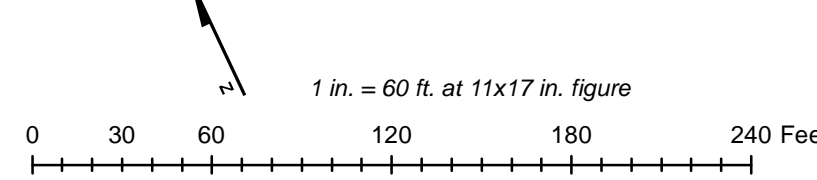


Figure 6

Range 62/67 East Excavation Area and Site Control



- Legend**
- Orange Mesh Construction Fence
 - New 4 Wire Strand Fence
 - Remove Existing 4 Wire Strand Fence
 - Fire Hose
 - Erosion Control/Silt Fence
 - Steep Hillside (Ecological Open Space)
 - Road Edgeline
 - Contours (Half Meter)
 - Truck Pad
 - Clean Backfill Stockpile Area
 - Equipment Staging and Storage
 - Soil Ready for Trucking to Range 91
 - Excavated Soil w/ Total Lead <2000 mg/kg
 - Reagent Stockpile (Ecobond)
 - Treated Soil Piles
 - +3/4" Rock
 - Soil Segregation/Treatment Area
 - Posted Sign
 - Construction Drive
 - Trucks Entering
 - Trucks Exiting
 - Fuel Storage



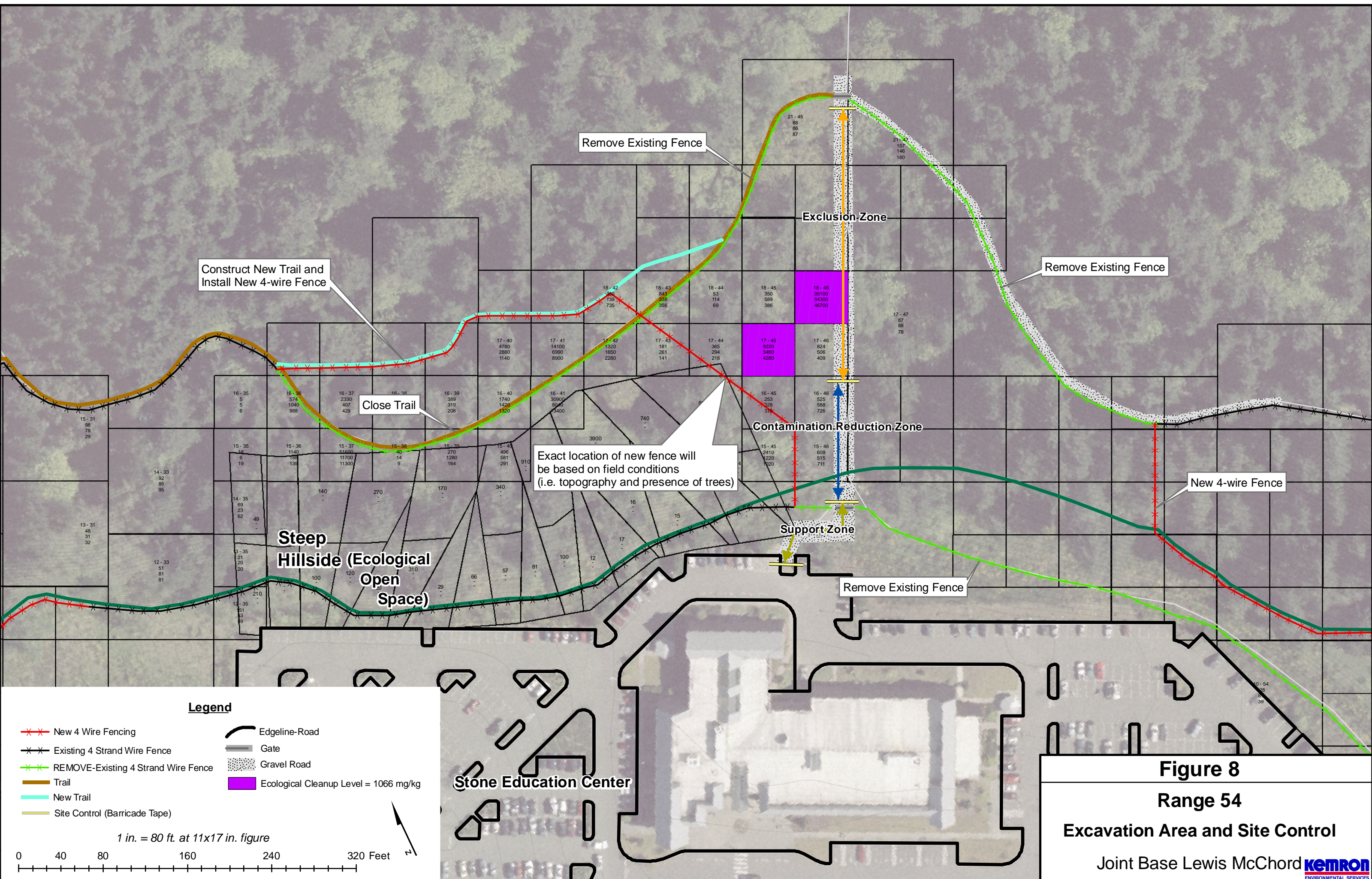
Note: Layout shown is approximate and may vary during actual field process at discretion of the engineer.

Figure 7 Revised 02/2012

Pistol Ranges 62 and 67

Soil Processing/Treatment

Joint Base Lewis McChord



Construct New Trail and Install New 4-wire Fence

Remove Existing Fence

Exclusion Zone

Remove Existing Fence

Close Trail

Exact location of new fence will be based on field conditions (i.e. topography and presence of trees)

Contamination Reduction Zone

New 4-wire Fence

Steep Hillside (Ecological Open Space)

Support Zone

Remove Existing Fence

Stone Education Center

Legend

- x-x- New 4 Wire Fencing
- x-x- Existing 4 Strand Wire Fence
- x-x- REMOVE-Existing 4 Strand Wire Fence
- Trail
- New Trail
- Site Control (Barricade Tape)
- Edgeline-Road
- Gate
- Gravel Road
- Ecological Cleanup Level = 1066 mg/kg

1 in. = 80 ft. at 11x17 in. figure

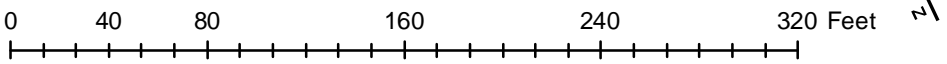


Figure 8

Range 54

Excavation Area and Site Control

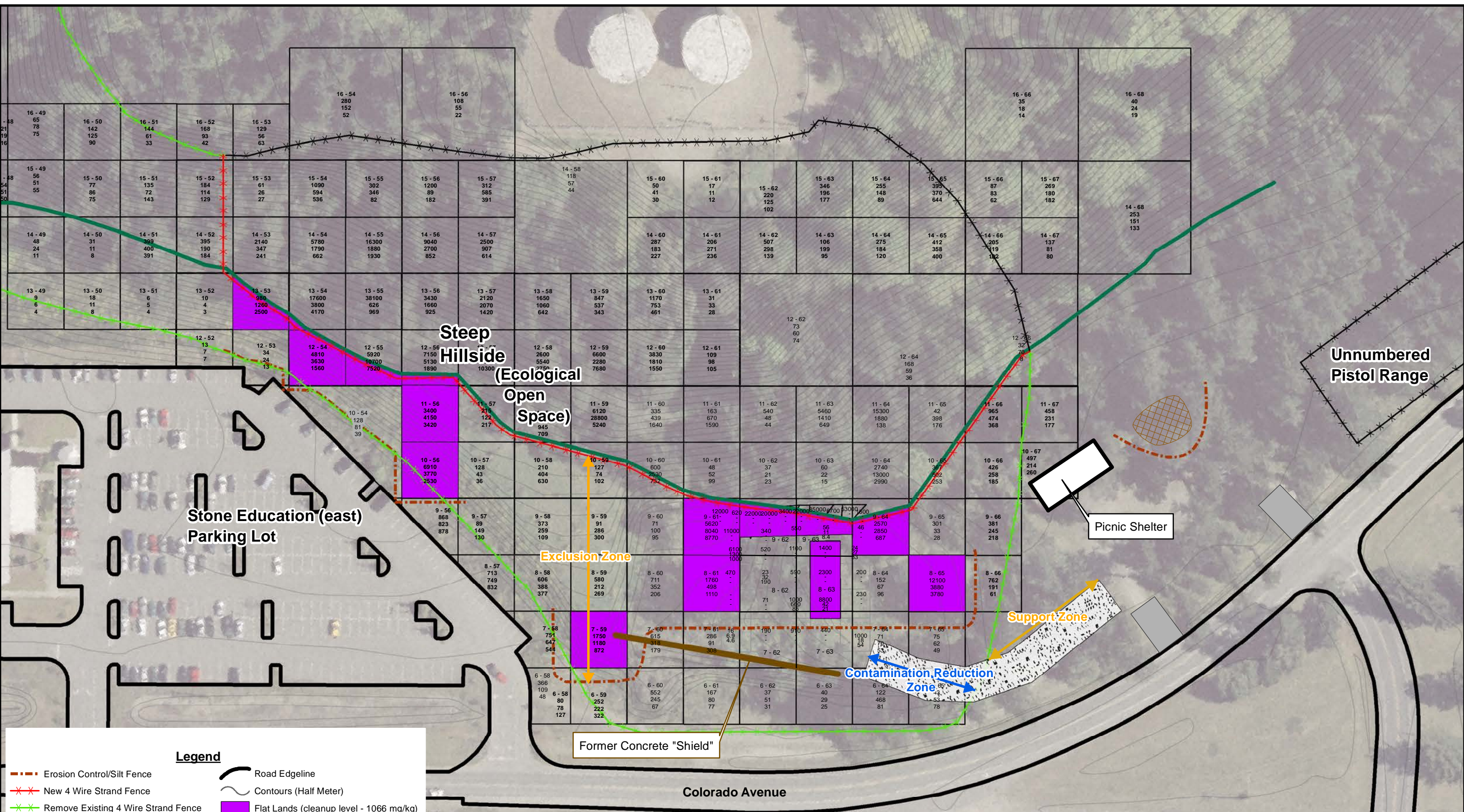


Figure 9 Revised 02/2012
Range 42
Excavation Area and Site Control
 Joint Base Lewis McChord

Note - Site Control Will Extend from Fence Corner to Picnic Shelter and then to Range 42 Fencing

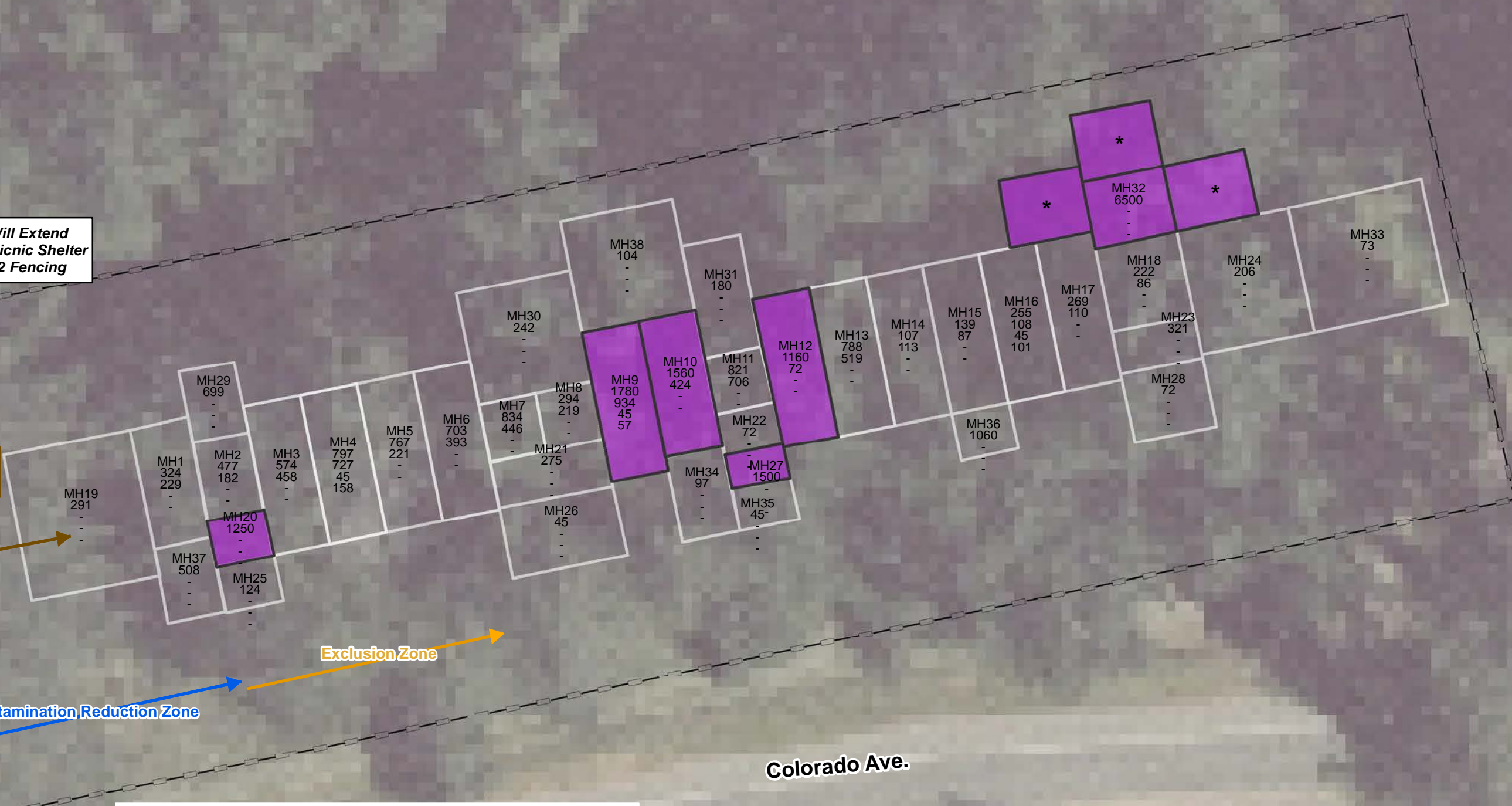
Empty Trucks Enter Full Trucks Exit

Support Zone

Exclusion Zone

Contamination Reduction Zone

Colorado Ave.



Legend

- Gate
- Flatlands (cleanup level - 1066 mg/kg)
- Site Control (Barricade Tape)
- Existing Chain Link Fence
- * Additional Delineation Grid

Note - Silt Fence Will Be Added at the Discretion of the Engineer
1 in. = 20 ft. at 11x17 in. figure

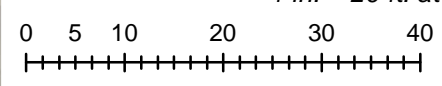
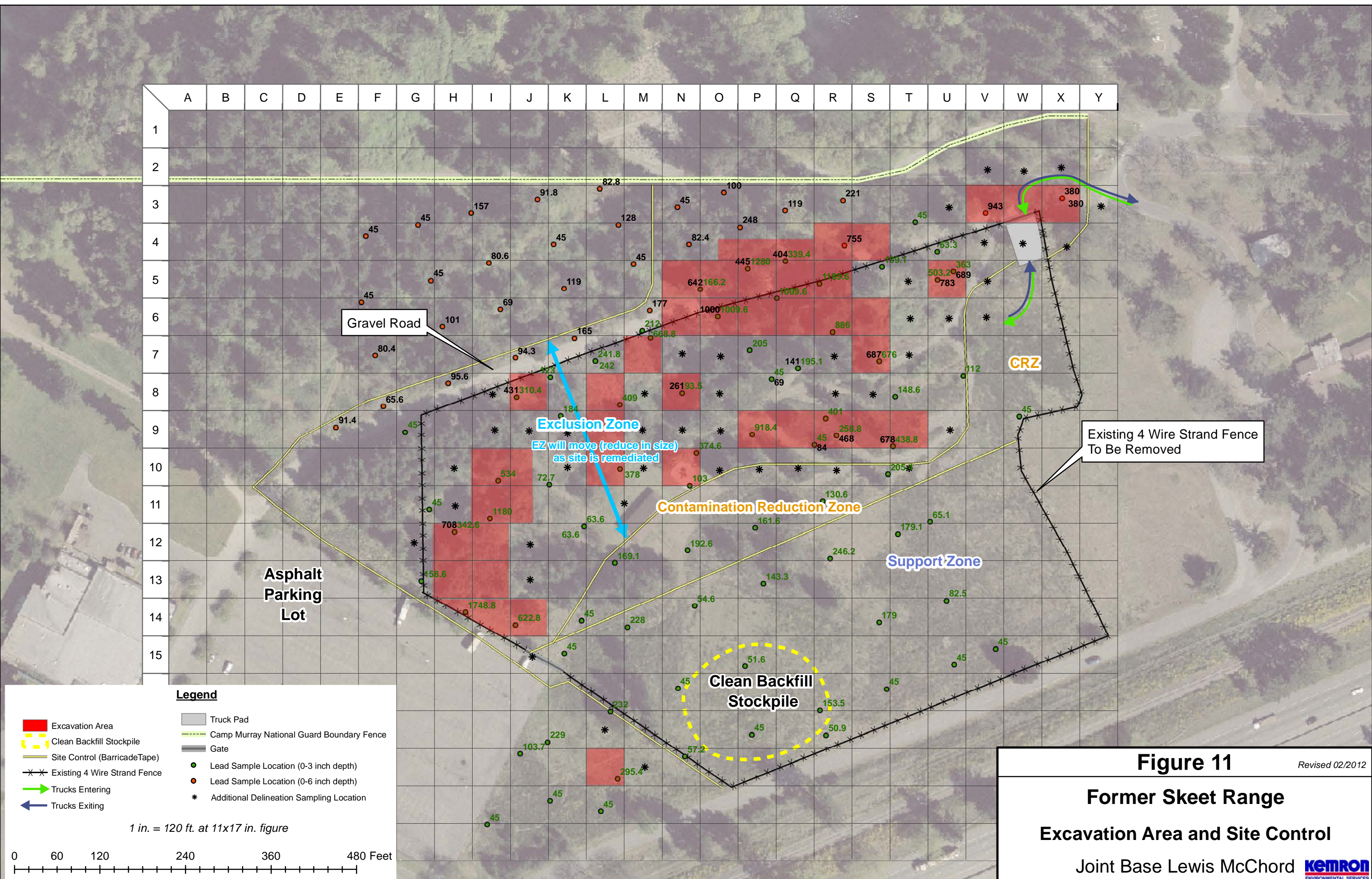


Figure 10 Revision 02/2012
Unnumbered Pistol Range
Excavation Area
and Site Control
 Joint Base Lewis McChord



Legend

- Excavation Area
- Clean Backfill Stockpile
- Site Control (BarricadeTape)
- Existing 4 Wire Strand Fence
- Trucks Entering
- Trucks Exiting
- Truck Pad
- Camp Murray National Guard Boundary Fence
- Gate
- Lead Sample Location (0-3 inch depth)
- Lead Sample Location (0-6 inch depth)
- Additional Delineation Sampling Location

1 in. = 120 ft. at 11x17 in. figure

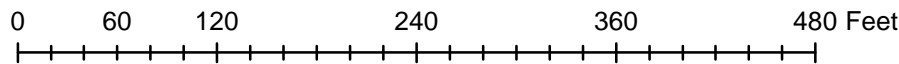
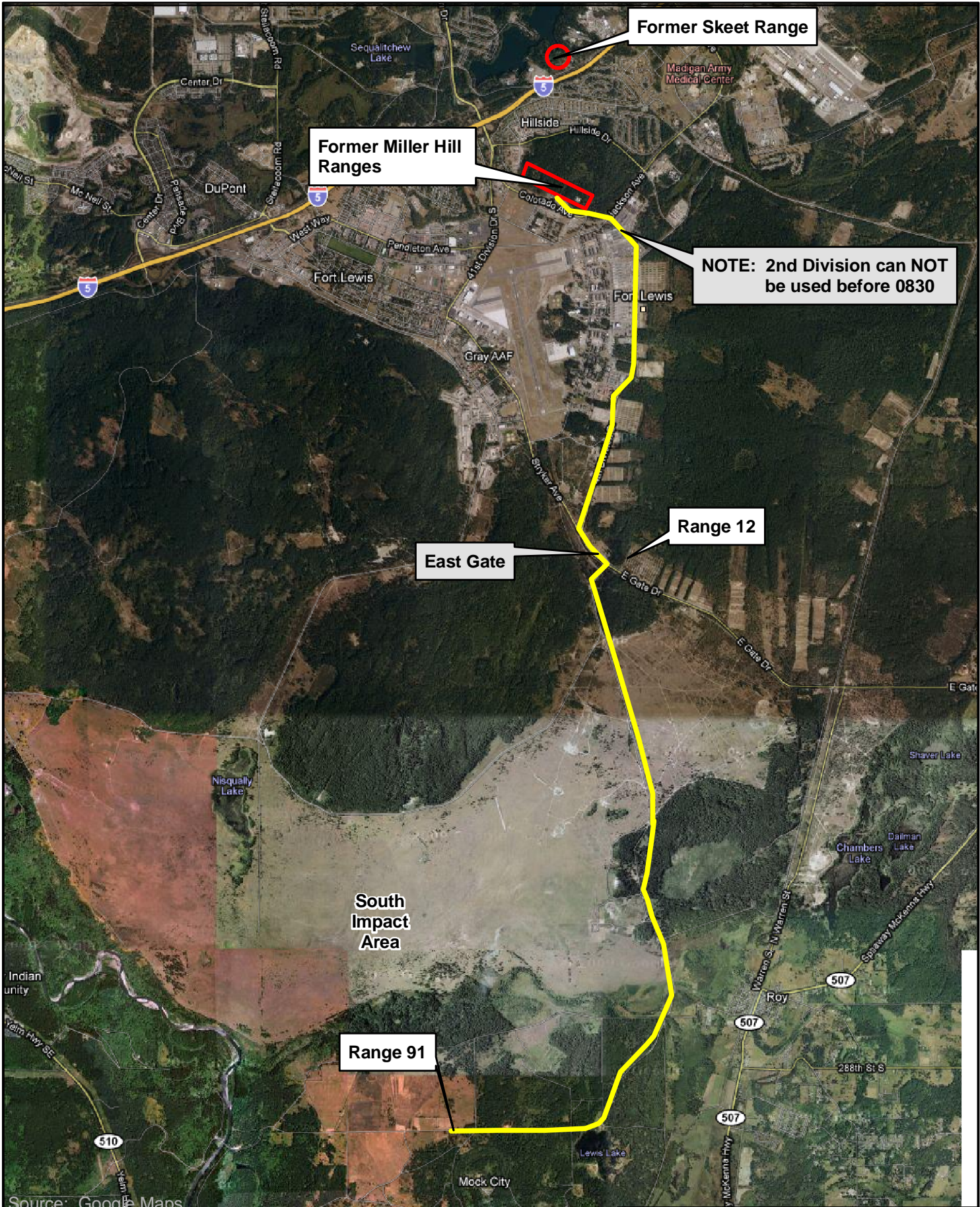


Figure 11 Revised 02/2012

Former Skeet Range


Excavation Area and Site Control

Joint Base Lewis McChord **KEMRON**
ENVIRONMENTAL SERVICES



Source: Google Maps

Legend

 Truck Route

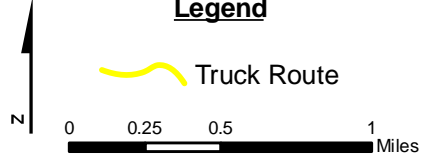


Figure 12

Miller Hill Truck Route to Range 12 and Range 91

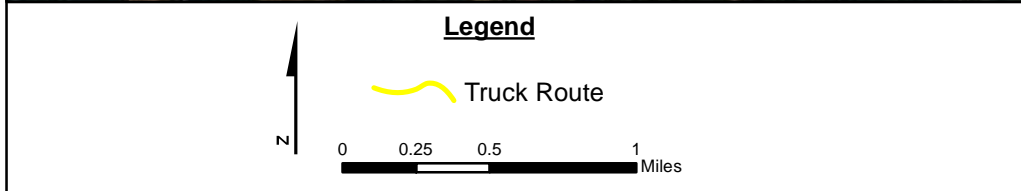
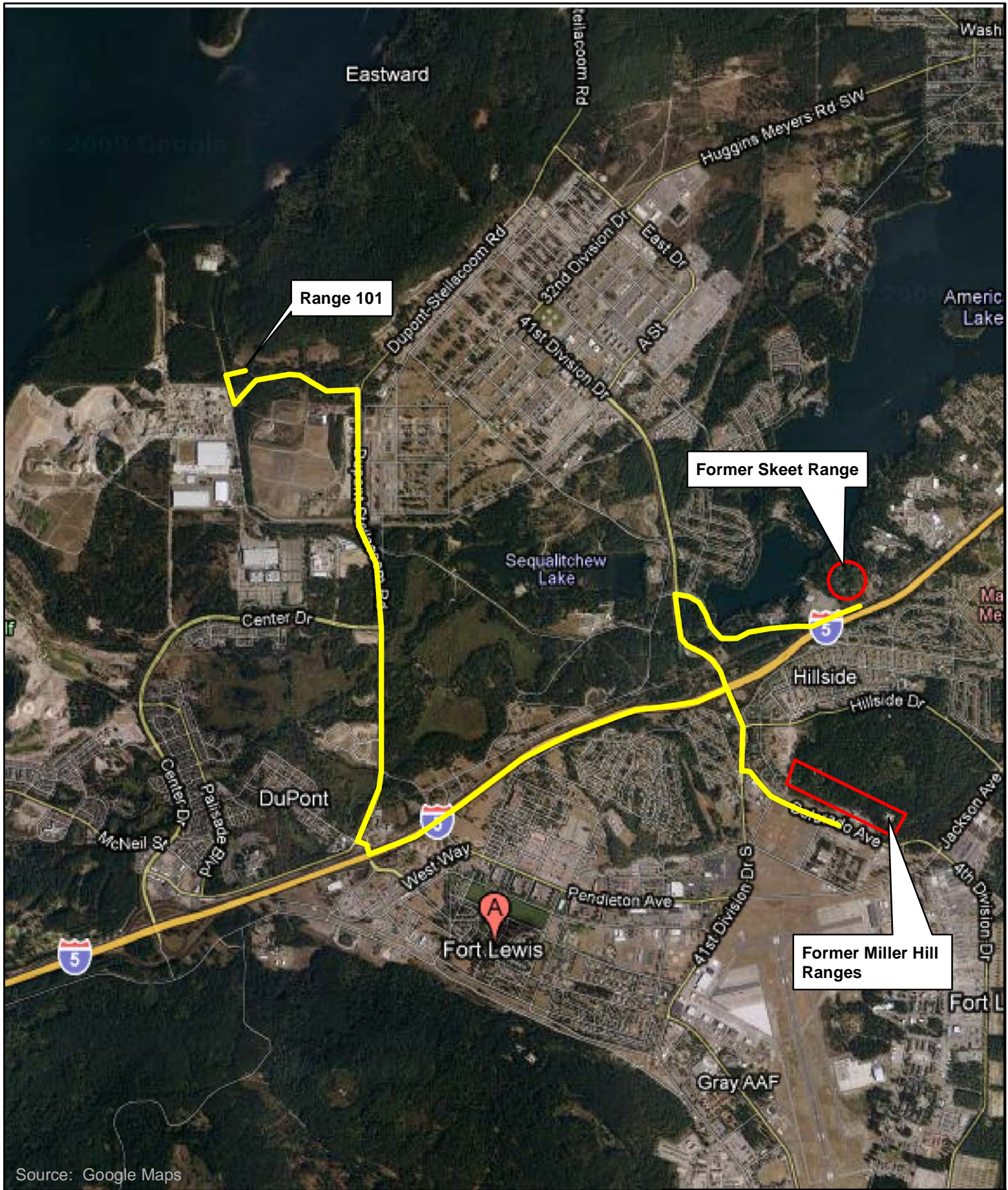


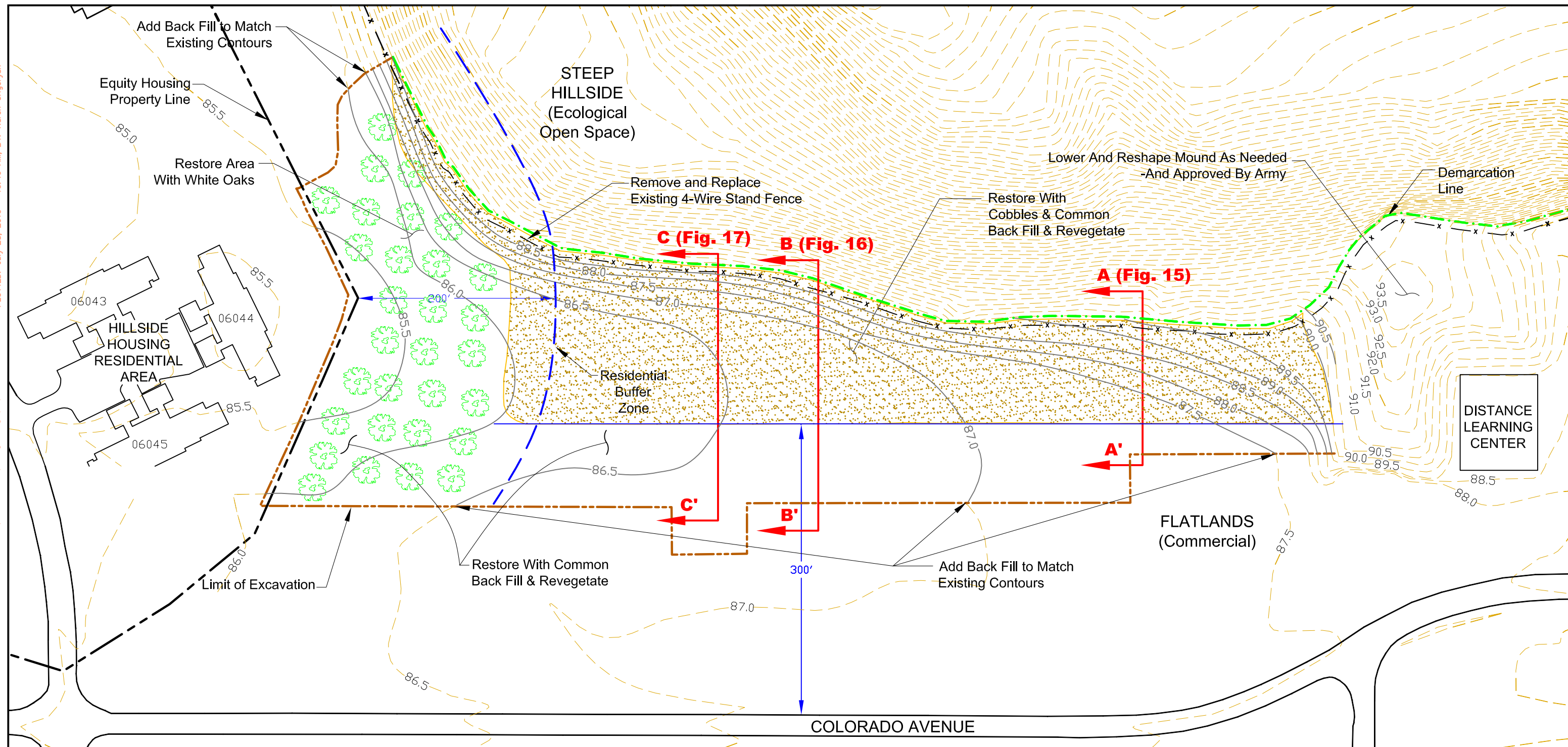
Figure 13 REVISED 02/2012

**Miller Hill and Skeet Range
Truck Route to Range 101**

Joint Base Lewis McChord

FILE PATH: (LOCATION) M:\VIENNA\JOINT BASE LEWIS McCHORD\7-10\FORMER PISTOL RANGES 62 & 67_FINAL GRADING PLAN, CROSS SECTIONS (7-27-10, R-13).DWG [FIG. 14] 7/27/10

PLOTTED: July 28, 2010 10:46 AM, BY: Karen Grigoryan

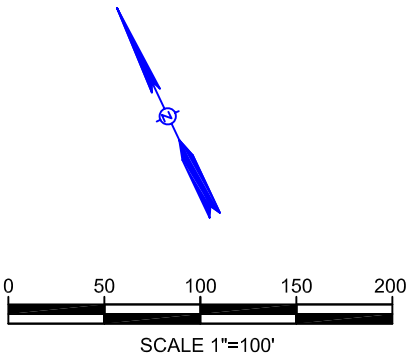


LEGEND

- - - - - STEEP HILLSIDE (Ecological Open Space)
- - - - - EROSION CONTROL/SILT FENCE
- x - x - RELOCATED 4 WIRE STRAND FENCE
- - - - - 200 ft BOUNDARY
- - - - - CONTOURS (Half Meter)
- - - - - ROAD EDGELINE
- - - - - EQUITY HOUSING LEASE BOUNDARY

Notes:

1. Contour interval are 0.5 meters.
2. Final contours are approximate and will be adjusted in the field to meet conditions, or as may be approved by Army.

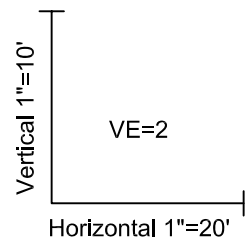
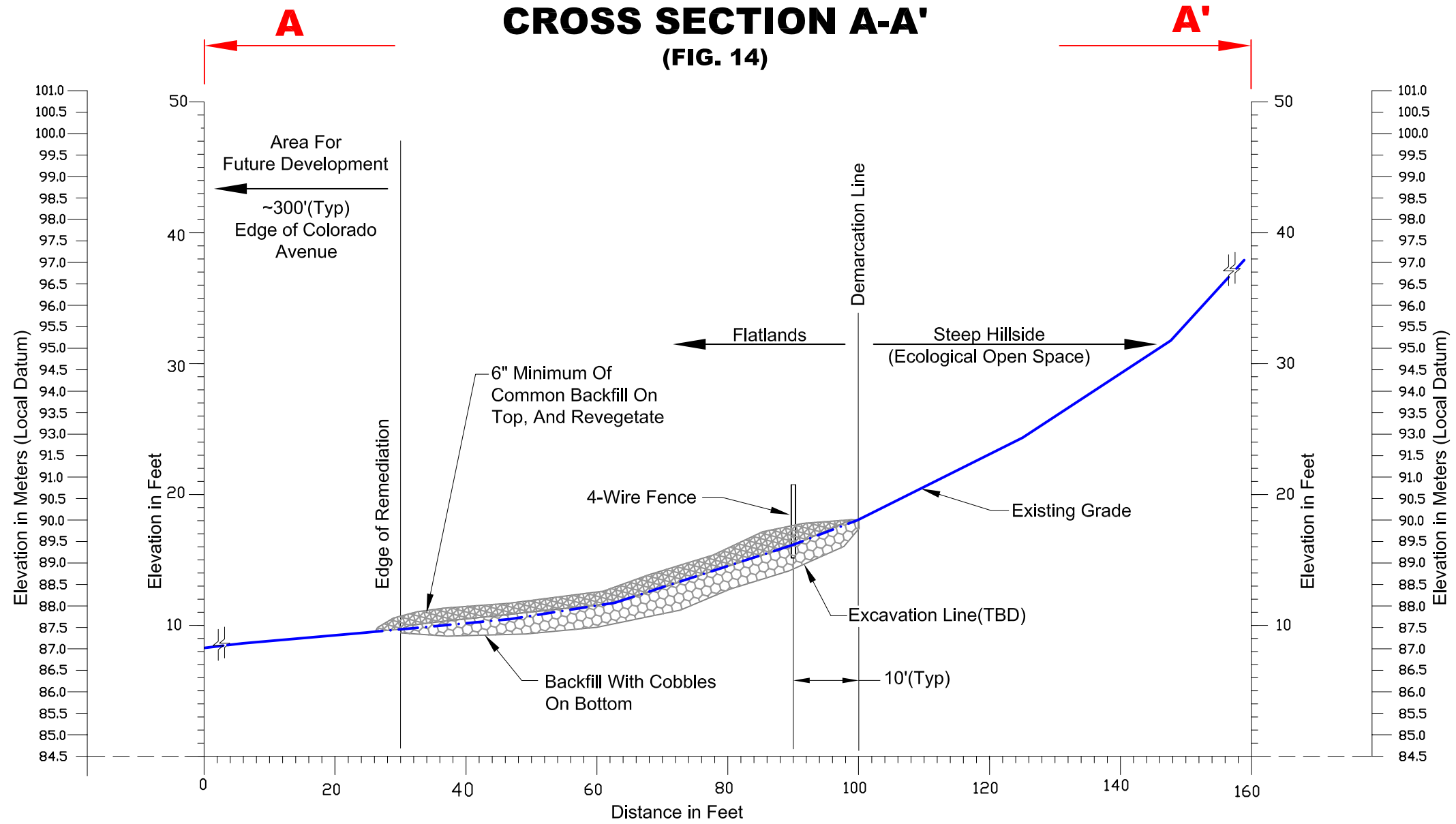


KEMRON Environmental Services, Inc.
1359-A Ellsworth Industrial Blvd., NW
Atlanta, GA 30318

PROJECT NO. CH0006-AF-004		ACAD FILE: FINAL GRADING TYPICAL CROSS SECTION	DRAWING DATE: 7/27/10
DESIGNED KG	RANGES 62 AND 67		
DETAILED KG	FINAL GRADING PLAN JOINT BASE LEWIS McCHORD		
CHECKED LE	CLIENT/LOCATION: JOINT BASE LEWIS McCHORD		FIGURE: 14

FILE PATH: (LOCATION) M:\VENNA\JOINT BASE LEWIS McCHORD\7-10\FORMER PISTOL RANGES 62 & 67. FINAL GRADING PLAN, CROSS SECTIONS (7-27-10. R-13).DWG [A-A] FIG 15.] 7/27/10 PLOTTED: July 27, 2010 - 4:16 PM, BY: Karen Grigoryan

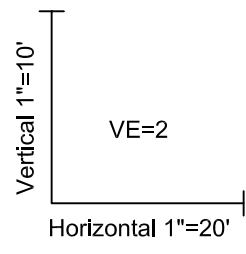
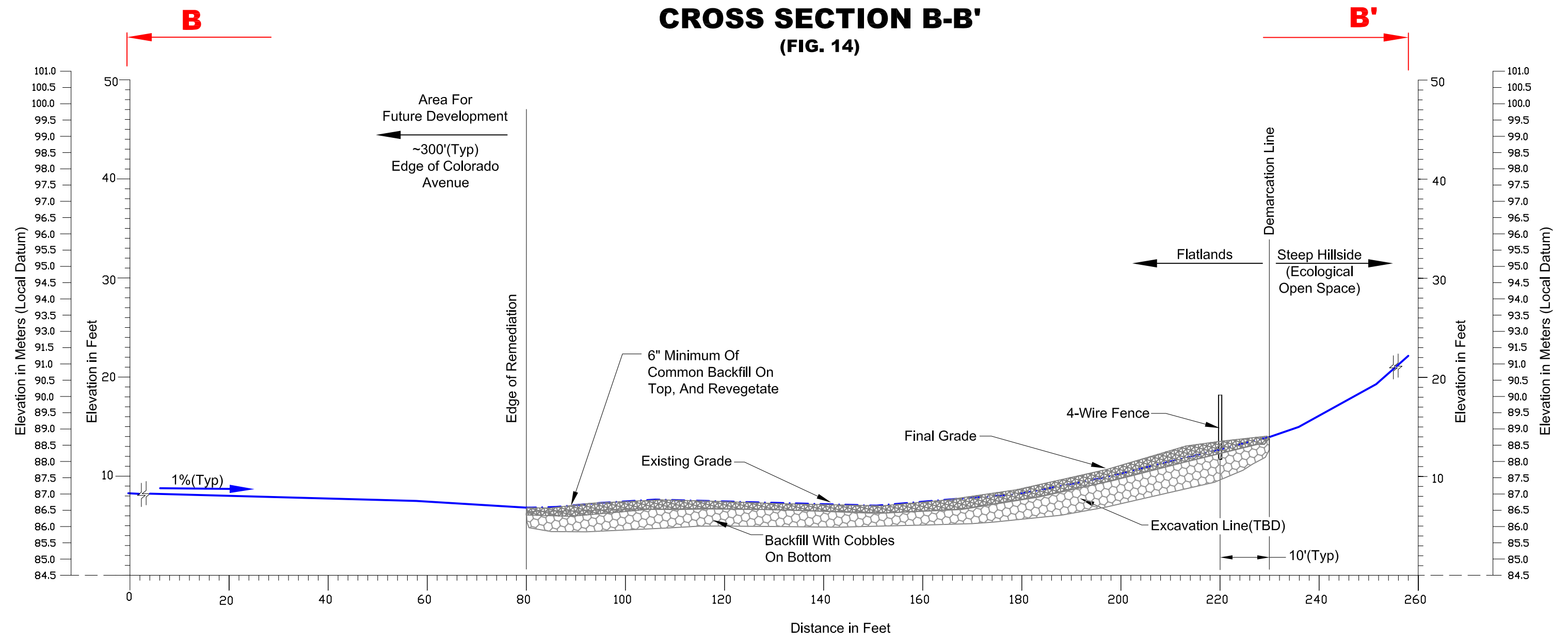
CROSS SECTION A-A' (FIG. 14)



		KEMRON Environmental Services, Inc. 1359-A Ellsworth Industrial Blvd., NW Atlanta, GA 30318	
PROJECT NO.	ACAD FILE:	DRAWING DATE:	
CH0006-AF-004	FORMER PISTOL RANGES CROSS SECTION	7/27/10	
DESIGNED	CROSS SECTION A-A'		
KG	FORMER PISTOL RANGES 62 AND 67		
DETAILED	JOINT BASE LEWIS McCHORD		
KG			
CHECKED	CLIENT/LOCATION:	FIGURE:	
LE	JOINT BASE LEWIS McCHORD	15	

FILE PATH: (LOCATION) M:\VIENNA\JOINT BASE LEWIS McCHORD\7-10\FORMER PISTOL RANGES 62 & 67_FINAL GRADING PLAN; CROSS SECTIONS (7-27-10, R-13).DWG [B-B' FIG. 16] 7/27/10 PLOTTED: July 27, 2010 -- 4:17 PM, BY: Karen Grigoryan

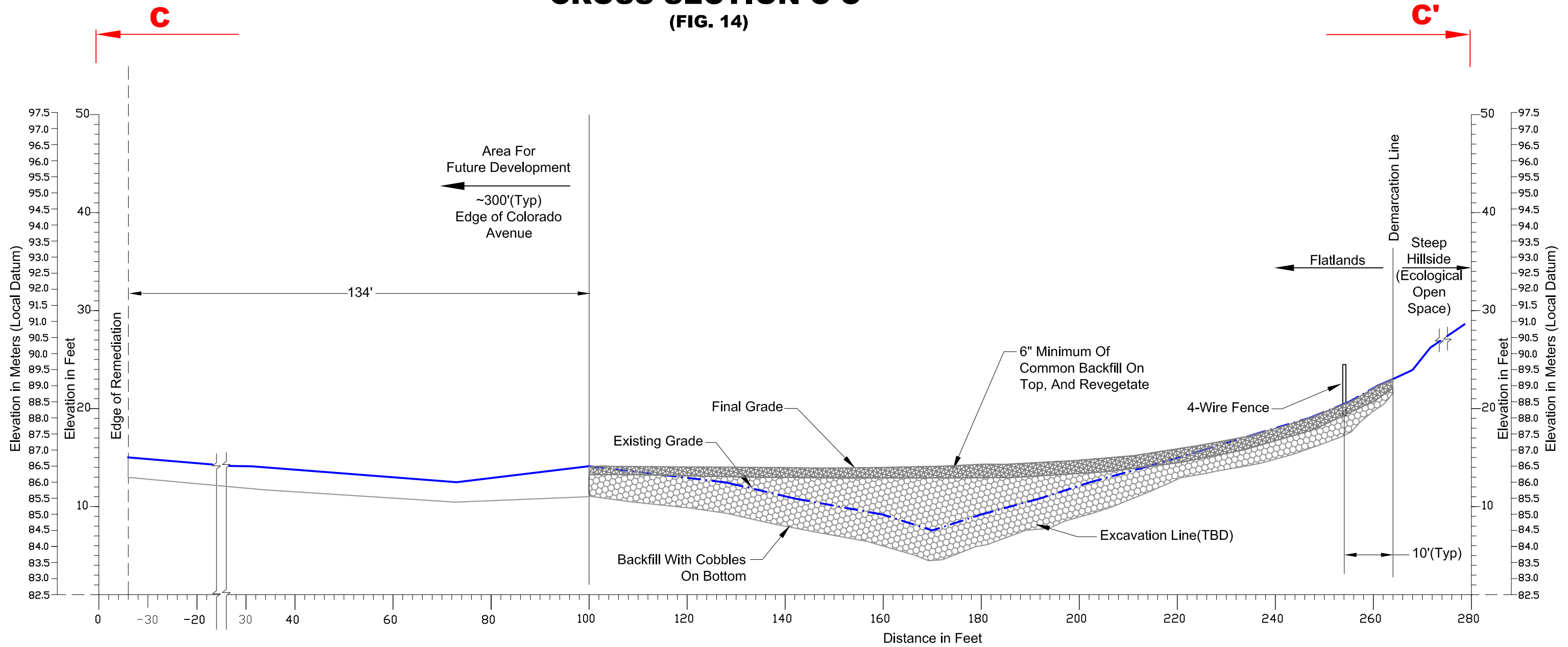
CROSS SECTION B-B' (FIG. 14)



KEMRON ENVIRONMENTAL SERVICES		KEMRON Environmental Services, Inc. 1359-A Ellsworth Industrial Blvd., NW Atlanta, GA 30318	
PROJECT NO.	ACAD FILE:	DRAWING DATE:	
CH0006-AF-004	FORMER PISTOL RANGES CROSS SECTION	7/27/10	
DESIGNED	CROSS SECTION B-B'		
KG	FORMER PISTOL RANGES 62 AND 67		
DETAILED	JOINT BASE LEWIS McCHORD		
KG	CLIENT/LOCATION:		FIGURE:
CHECKED	JOINT BASE LEWIS McCHORD		16
LE			

FILE PATH: (LOCATION) M:\VIENNA\JOINT BASE LEWIS McCHORD\7-10\FORMER PISTOL RANGES 62 & 67_FINAL GRADING PLAN_CROSS SECTIONS (7-27-10_R-13).DWG [c-c' FIG. 17] 7/27/10 PLOTTED: July 27, 2010 - 4:18 PM, BY: Karen Grigoryan

CROSS SECTION C-C' (FIG. 14)



Vertical 1"=10'
Horizontal 1"=20'
VE=2

KEMRON ENVIRONMENTAL SERVICES		KEMRON Environmental Services, Inc. 1359-A Ellsworth Industrial Blvd., NW Atlanta, GA 30318	
PROJECT NO.	ACAD FILE:	DRAWING DATE:	
CH0006-AF-004	FORMER PISTOL RANGES CROSS SECTION	7/27/10	
DESIGNED	CROSS SECTION C-C'		
KG	FORMER PISTOL RANGES 62 AND 67		
DETAILED	JOINT BASE LEWIS McCHORD		
KG	JOINT BASE LEWIS McCHORD		
CHECKED	CLIENT/LOCATION:	FIGURE:	
LE	JOINT BASE LEWIS McCHORD	17	

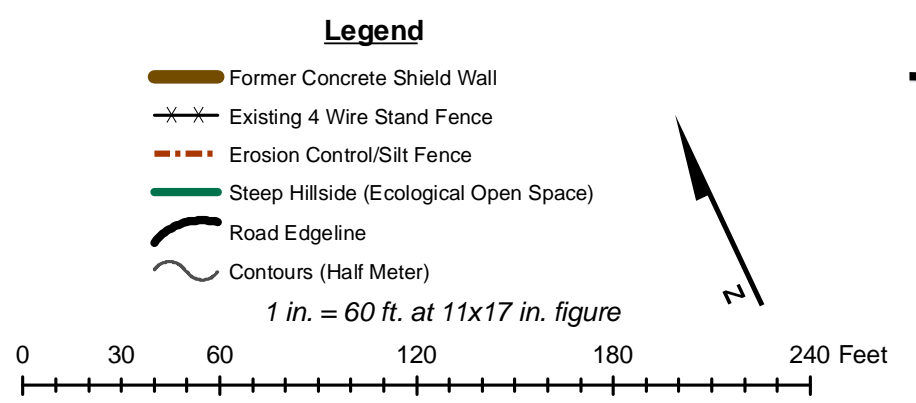
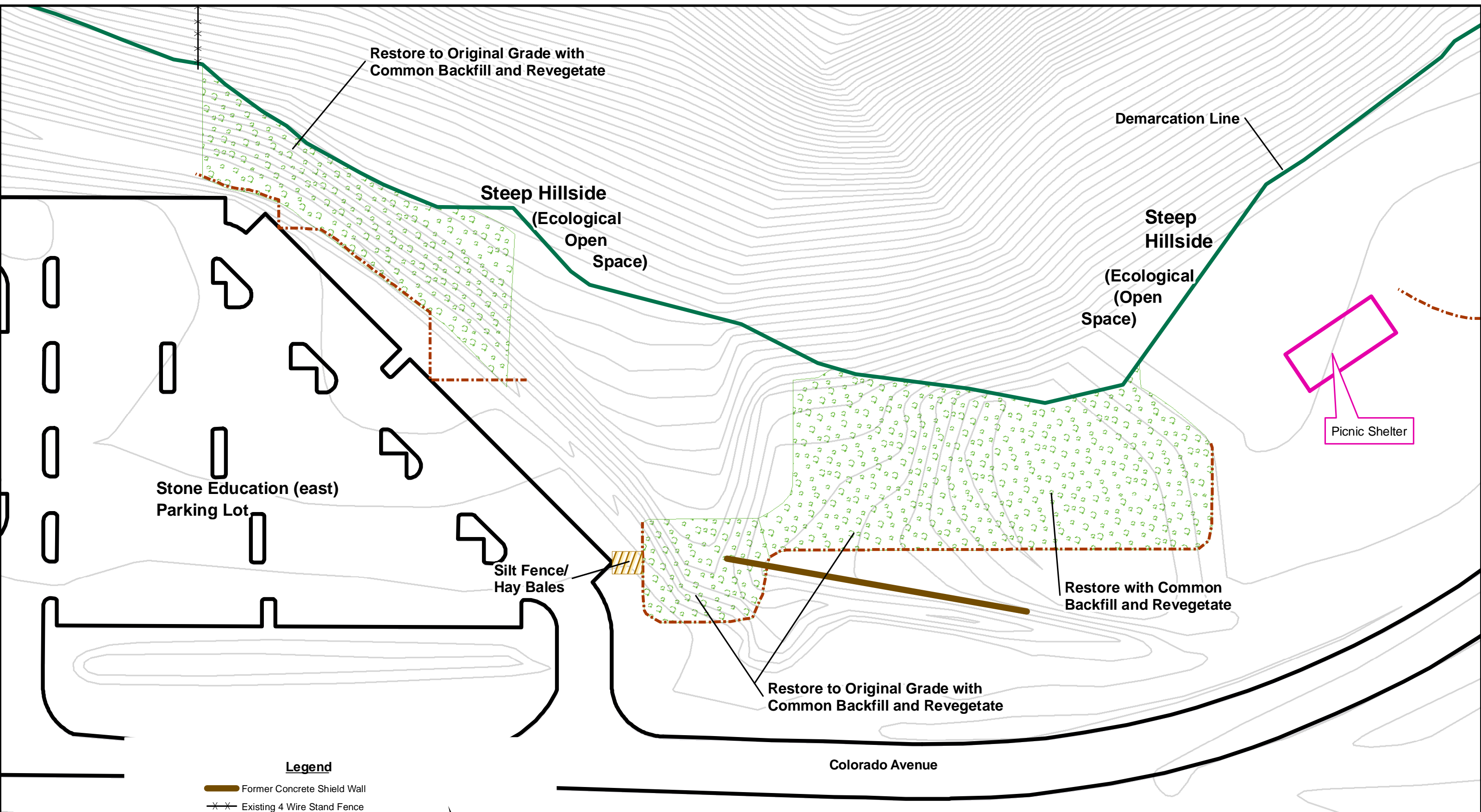


Figure 18
Range 42
FINAL GRADING PLAN
 Joint Base Lewis McChord