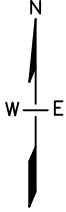
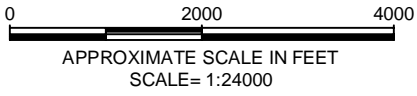
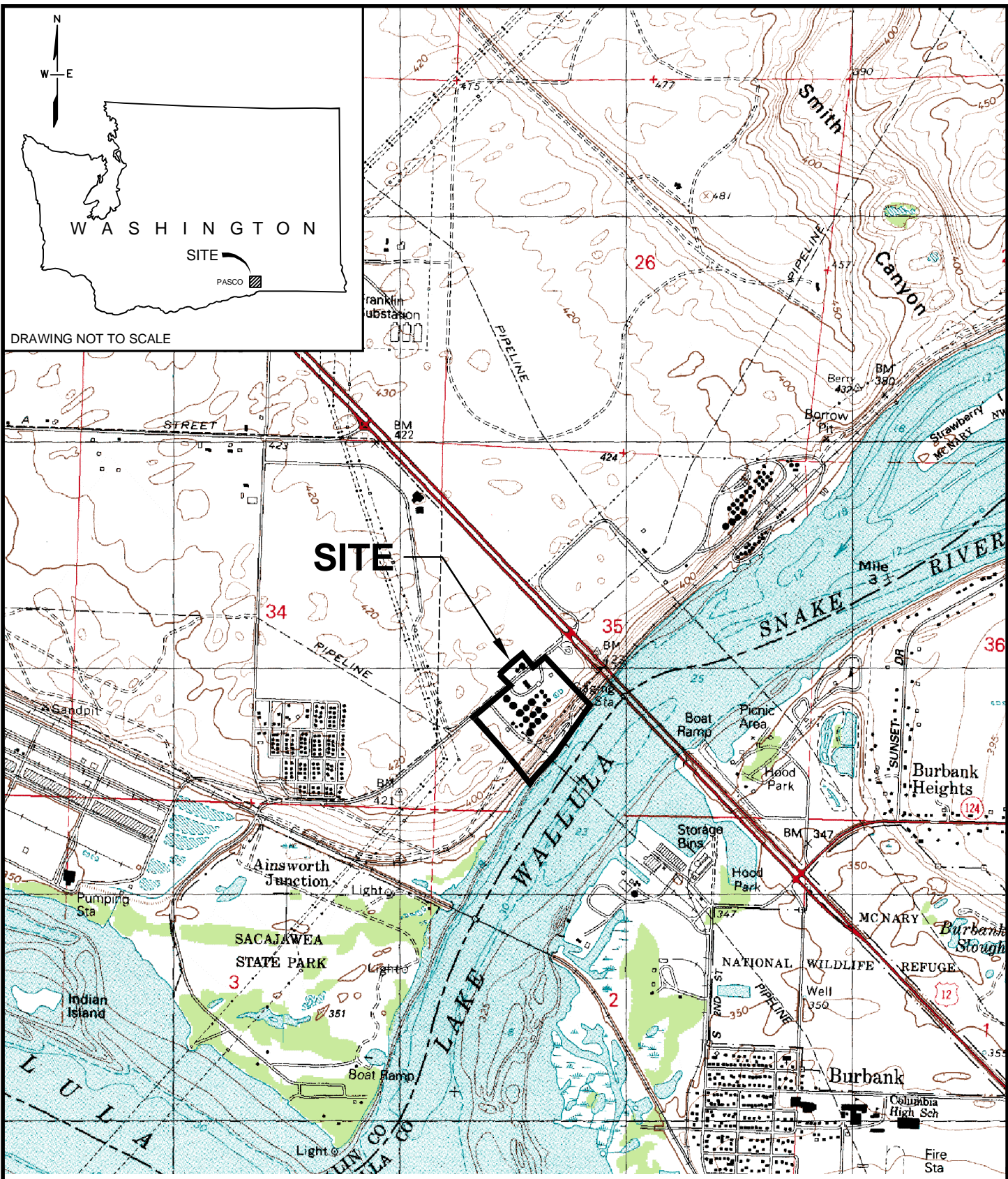


DRAWING NOT TO SCALE



SOURCE: U.S.G.S. 7.5-MINUTE SERIES TOPOGRAPHIC MAP.
PASCO, WASHINGTON (1992) QUADRANGLE.



10550 RICHMOND AVENUE, SUITE 155
HOUSTON, TEXAS 77042
PH: (713) 914-6699
FAX: (713) 789-8404

Scale: AS SHOWN	Drawn by: CLK	Date: 09/08/11
	Chk'd by: ED	Date: 09/08/11

Title:
SITE VICINITY MAP

Project:
NWTC PASCO TERMINAL
PASCO, WASHINGTON

Client:
CHEVRON PIPE LINE COMPANY

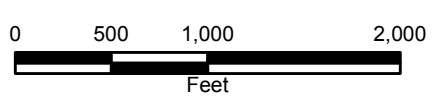
Project No.:	File Name:	Figure:
25012120	Site Vicinity Map.dwg	1

K:\ENV\25012120\Deliverables\Draft Final RIFS Report\Figures\Fig 1 - Site Vicinity.dwg Sep 08, 2011 - 9:29am



Imagery: National Agriculture Imagery Program (NAIP) 2006

- Legend**
- SITE
 - Tidewater Pipelines
 - Railroad
 - ← River Flow Direction



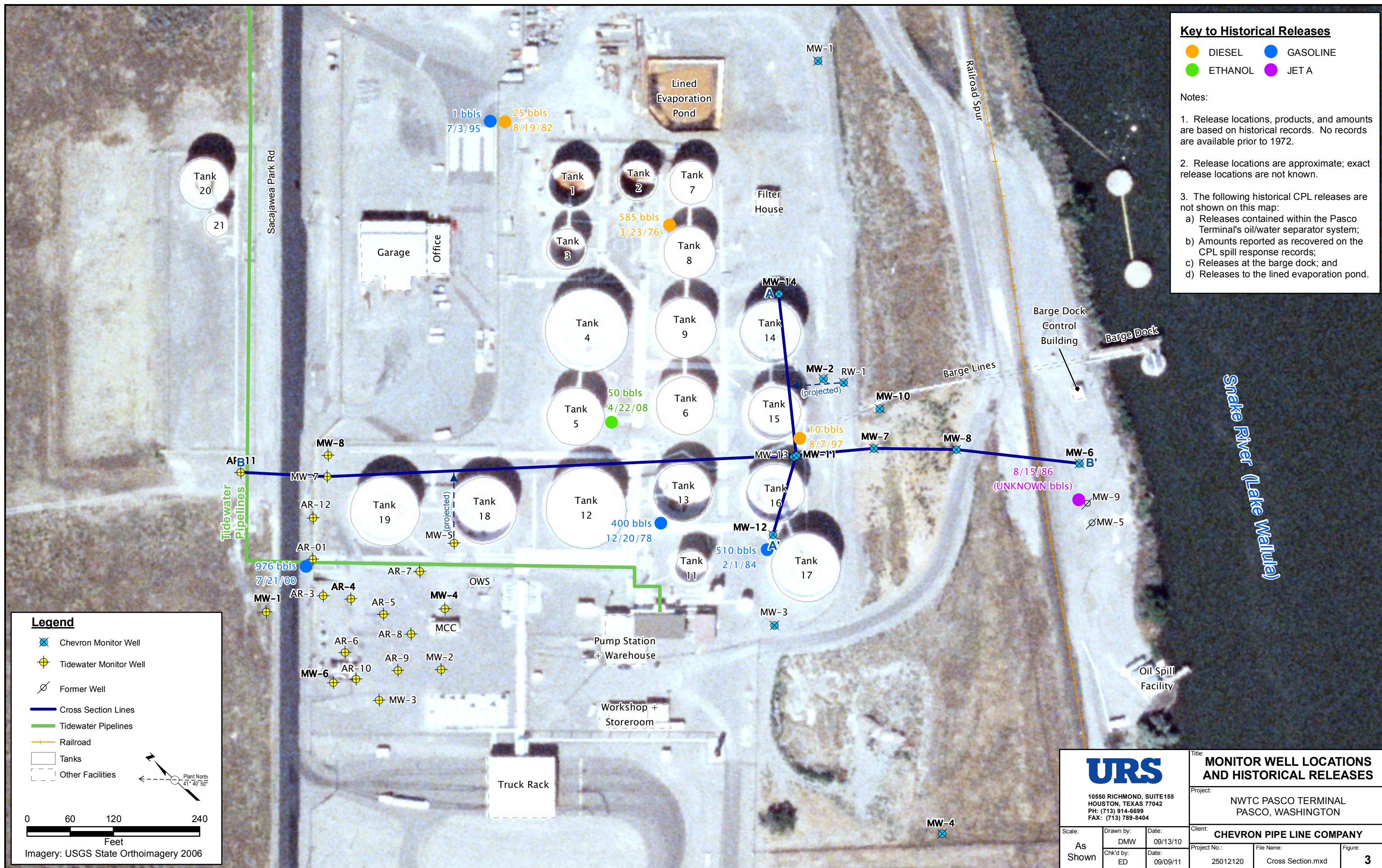
URS			LAND USE MAP		
10550 RICHMOND, SUITE 155 HOUSTON, TEXAS 77042 PH: (713) 914-6699 FAX: (713) 789-8404			Project: NWTC PASCO TERMINAL PASCO, WASHINGTON		
Scale: As Shown			Client: CHEVRON PIPE LINE COMPANY		
Drawn by: KPL	Date: 01/21/10	Project No.: 25012120	File Name: Site Aerial.mxd	Figure: 2	Date: 09/09/11

Key to Historical Releases

- DIESEL
- GASOLINE
- ETHANOL
- JET A

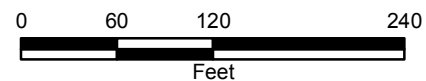
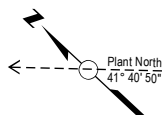
Notes:

1. Release locations, products, and amounts are based on historical records. No records are available prior to 1972.
2. Release locations are approximate; exact release locations are not known.
3. The following historical CPL releases are not shown on this map:
 - a) Releases contained within the Pasco Terminal's oil/water separator system;
 - b) Amounts reported as recovered on the CPL spill response records;
 - c) Releases at the barge dock; and
 - d) Releases to the lined evaporation pond.



Legend

- ⊗ Chevron Monitor Well
- ⊕ Tidewater Monitor Well
- ⊗ Former Well
- Cross Section Lines
- Tidewater Pipelines
- Railroad
- Tanks
- Other Facilities



Imagery: USGS State Orthoimagery 2006



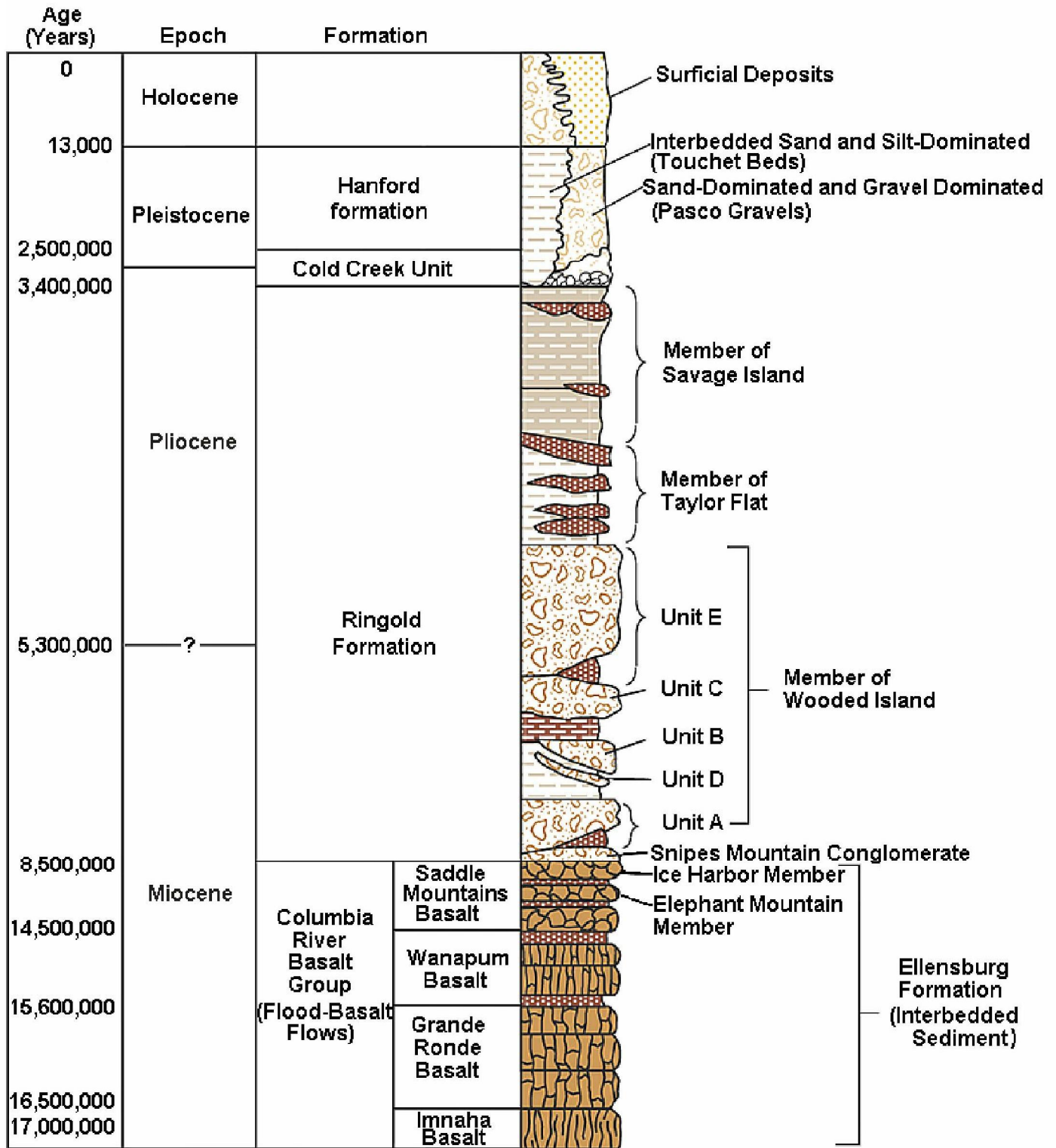
10550 RICHMOND, SUITE 155
HOUSTON, TEXAS 77042
PH: (713) 914-6699
FAX: (713) 789-8404

MONITOR WELL LOCATIONS AND HISTORICAL RELEASES

Project: NWTC PASCO TERMINAL
PASCO, WASHINGTON


Scale: As Shown		Drawn by: DMW	Date: 09/13/10	Client: CHEVRON PIPE LINE COMPANY	
Chk'd by: ED		Date: 09/09/11	Project No.: 25012120	File Name: Cross Section.mxd	Figure: 3

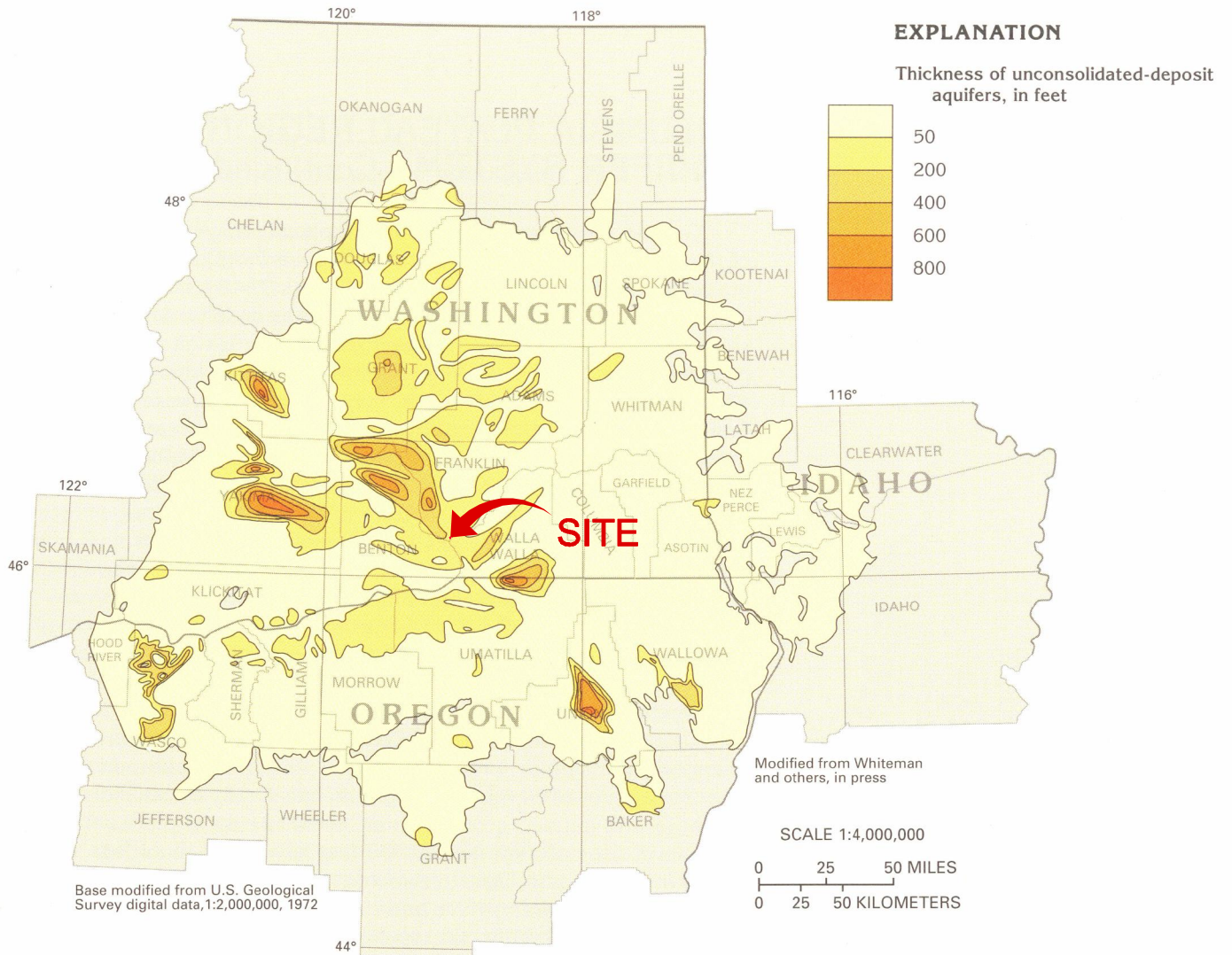
File: K:\ENV\ENV20\25012120\Deliverables\Draft\Final RIFS Report\Figures\Fig 4 - Stratigraphic Col for East-Cen Washington.dwg Layout: Layout1 User: Corey_Kelly Plotted: Sep 08, 2011 - 9:24am




REFERENCE:

Figure 4.3-5 from Hanford Site National Environmental Policy Act (NEPA) Characterization, D.A. Neitzel, ed., PNNL-6415, Rev. 17, September 2005.

 <p>10550 RICHMOND AVENUE, SUITE 155 HOUSTON, TEXAS 77042 PH: (713) 914-6699 FAX: (713) 789-8404</p>			Title: STRATIGRAPHIC COLUMN FOR EAST-CENTRAL WASHINGTON		
			Project: NWTC PASCO TERMINAL PASCO, WASHINGTON		
Scale: AS SHOWN			Client: CHEVRON PIPE LINE COMPANY		
Drawn by: CLK		Date: 09/08/11	Project No.: 25012120		File Name: Stratigraphic Col for East-Cen Washington.dwg
Chk'd by: ED		Date: 09/08/11	Figure: 4		



REFERENCE:
 WHITEHEAD, R.L., 1994, GROUNDWATER ATLAS OF THE UNITED STATES SEGMENT 7 - IDAHO, OREGON, WASHINGTON: U.S. GEOLOGICAL SURVEY - HYDROLOGIC INVESTIGATIONS ATLAS 730-H. P. H21

 10550 RICHMOND AVENUE, SUITE 155 HOUSTON, TEXAS 77042 PH: (713) 914-6699 FAX: (713) 789-8404			Title: THICKNESS OF UNCONSOLIDATED DEPOSIT AQUIFERS		
			Project: NWTC PASCO TERMINAL PASCO, WASHINGTON		
Scale: AS SHOWN			Client: CHEVRON PIPE LINE COMPANY		
Drawn by: CLK		Date: 09/08/11		Project No.: 25012120	
Chk'd by: ED		Date: 09/08/11		File Name: Thickness of Unconsolidated-Deposit Aquifers Map.dwg	
					Figure: 5